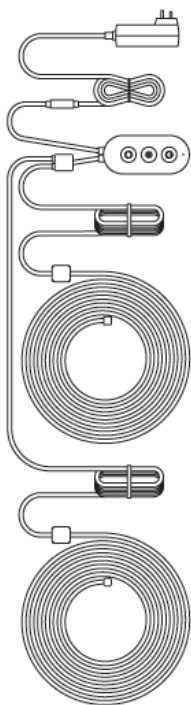


gosund | SL3



Smart LED Light Strip
User Manual

-1-

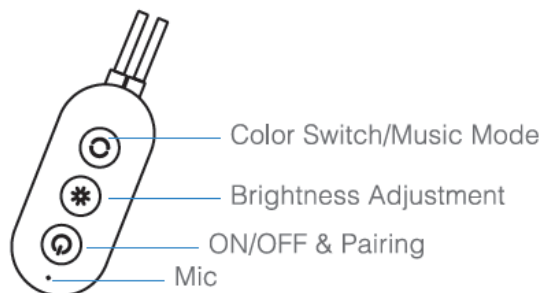
► Product Package

1. Model: SL3
2. Controller Box
3. Power Adapter
4. 3M Adhesive
5. Buckles
6. User Manual

► LED Light Strip

Input: DC12V, 2A
Rated power: 24W
Color: RGB
WiFi Frequency: 2.4G

► Indicating controller key



-2-

► How to Pair with the Gosund App?

1. Download the Gosund app from the App Store/Google Play or via the QR code below.
2. Open Gosund, create your account and tap "+" icon in the top right corner and select "Strip lights"
3. Follow on-screen instructions to complete the connection.



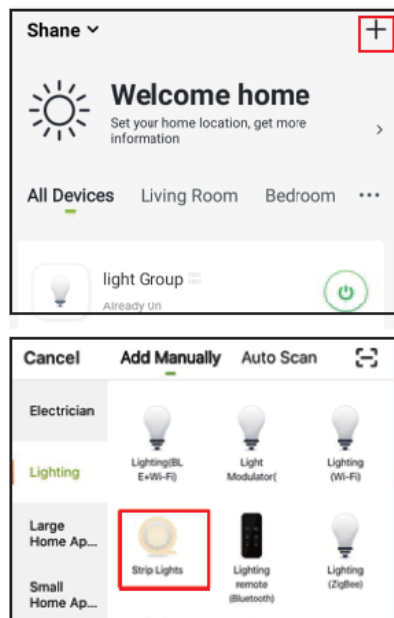
Gosund

-3-

► Connecting the device with Gosund App

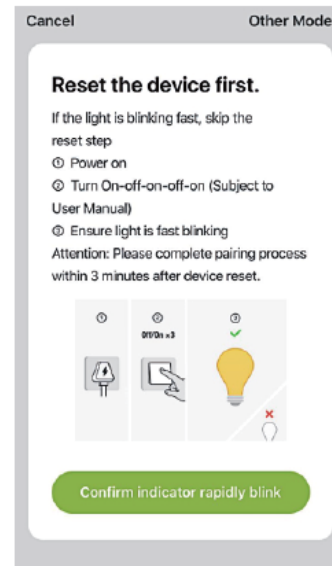
A: For Easy Mode Connection-LED Light Strip blue lights blinking quickly.

1. Long press(more than 6 seconds) on/off button until the light strip flashes quickly
 —>Open Gosund App—>Choose the "+" symbol—>"Lighting"—>"Strip lights".



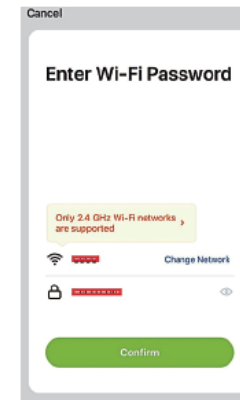
-4-

2. Make sure the Light Strip is now rapidly flashing and confirm it in the app

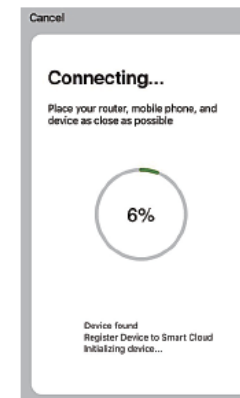


3. Choose your home Wifi(make sure the Wifi connection you choose is the same connection/Wifi you used on your phone/device and it should be 2.4GHz not 5GHz

-5-



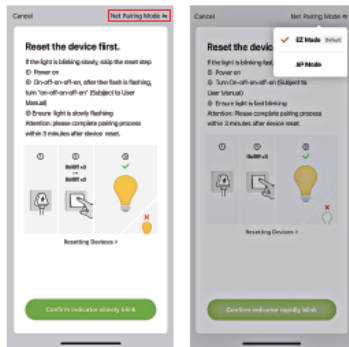
4. Finally, wait to successfully configure, then tap "Completed".



-6-

B.AP Mode

1. Please switch to "Other Mode", Click "AP Mode"



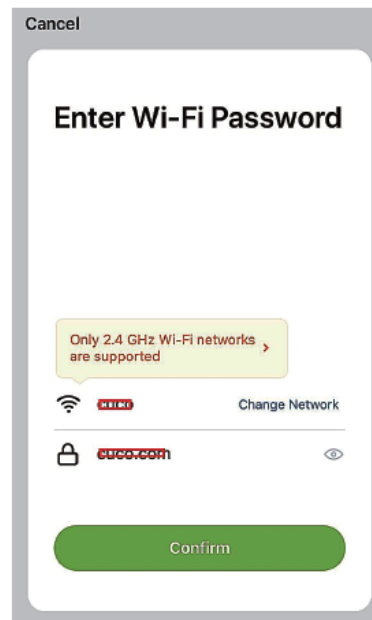
2. Long press on/off button until the Light Strip flashes slowly



-7-

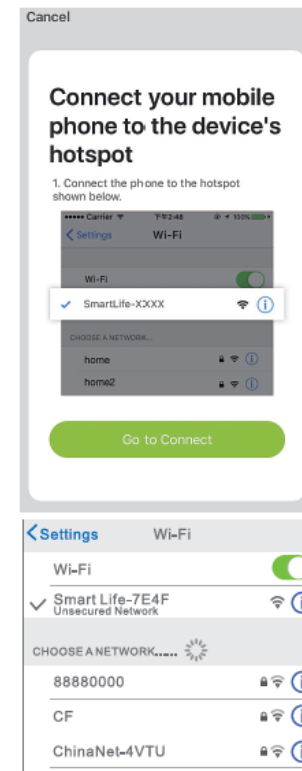
3. Make sure the Light Strip is flashing slowly and confirm it in APP

4. Choose your 2. 4G Wi-Fi and enter the password and confirm it in APP



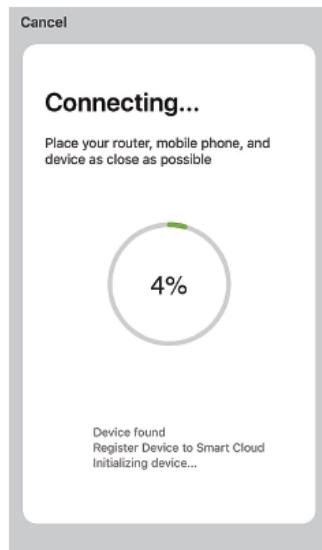
-8-

5. Tap Connect now and choose Wi-Fi hotspot named "Smartlife-xxx" then go back to Gosund application



-9-

6. Wait till successful configuration and then tap "Completed"



Note: if the connection fails in "AP Mode", please check if your router is dual-band Wi-Fi. If it is dual-band Wi-Fi, please enter the router management interface to split 2.4G and 5G Wi-Fi, and then connect 2.4G Wi-Fi.

-10-

After connecting the network, short press on/off button to switch different color, press on/off button 2-6 seconds to power off, long press on/off button more than 6 seconds to restore factory settings.

▶ Getting to know "Gosund" APP

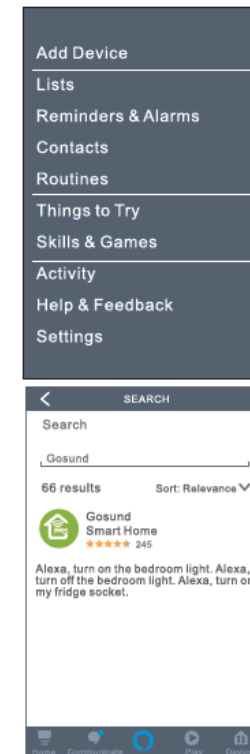
You can create certain scenes and groups on Gosund App, it allows you to control different smart devices indifferent rooms at the same time

▶ Using Amazon Echo Quick Guide What You'll Need...

Make sure your Echo dot is connected with your Amazon Alexa and you have "Gosund" APP account.

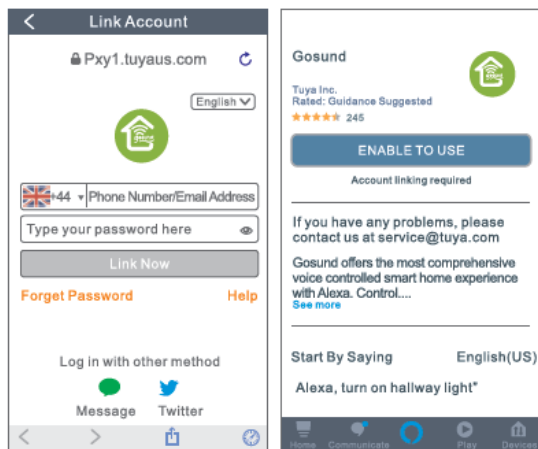
A. Enable our Skill in Alexa APP
Log in your Amazon Alexa, choose "Skill" in the option bar, then search "Gosund" in the search bar; Select "Gosund" in the search result and click "Enable".

-11-



Input your account and password that you have registered at "Gosund" APP. When you set the right page, it means your Alexa account is connected with your "Gosund" account.

-12-



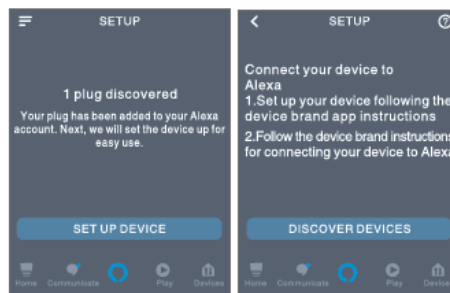
B.Control Smart Light Strip by Voice

After Alexa is linked to your "Gosund" APP, you can now control the light strip via Echo.

1. Discovering device simply say to Echo: "Echo(or Alexa), discover my device." or choose "add device" to discover the smart light strip. Echo will start to find the device which is added in "Gosund" APP. It will take about 20 seconds to show the result. Or you may click "Discover device" on the Alexa APP, it will successfully show available devices.

-13-

Note: Echo is one of the wake-up name, the other two names are Alexa and Amazon.



2. Support Skill List

You can control devices by instruction like below:

"Alexa, turn on/off (name of the smart light strip)"

"Alexa, turn on the light strip."

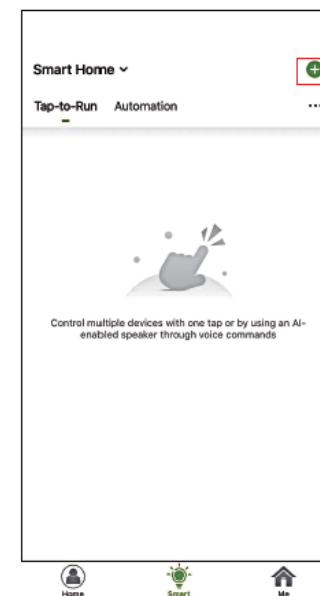
"Alexa, turn off the light strip."

Note: The name of the device must be consistent with the name of light strip on the "Gosund" APP. The name is recommended to use easy pronunciation of English words. (Amazon Echo just supports English temporarily.)

-14-

▶ Voice control light strip via Siri (iPhone)

1. Open the Gosund APP and make sure the light strip is connected to the APP.
2. Click Tap-to-Run, then click the symbol "+" in the upper right.

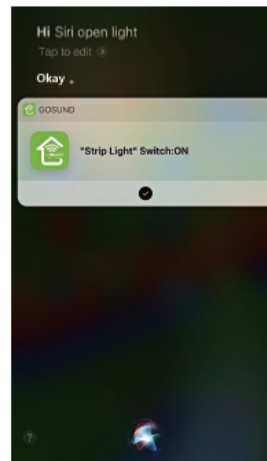


-15-

3. Select your scenes and device then select the command you need. For example: Turn On
4. After done you can see the command you need "ON" has appeared in the interface.
5. Click "Add to Siri" in the lower right, then record your command. For example, you can say: "Open Light"
6. After done you can control the light strip via Siri. Say "Hi Siri, Open Light", The light strip will be turned on.



-16-



-17-

► After-sale & Warranty

All products come with a limited warranty of 12 months from the date of purchase . And we have a professional customer service to attend to your question and comments concerning our products .

► Contact Us

Shenzhen Gosund Technology Co, Ltd
 Website: www.gosund.com
 After sale: service@gosund.com
 Address: Gushu Community, Xixiang Street,
 Baoan District, Shenzhen, China



4.02.000.0419 V1.0

-18-

<p>FCC Warning</p> <p>This device complies with part 15 of the FCC rules. Operation is subject to the following two conditions: (1) this device may not cause harmful interference, and (2) this device must accept any interference received, including interference that may cause undesired operation.</p> <p>Changes or modifications not expressly approved by the party responsible for compliance could void the user's authority to operate the equipment.</p> <p>NOTE: This equipment has been tested and found to comply with the limits for a Class B digital device, pursuant to part 15 of the FCC Rules. These limits are designed to provide reasonable protection against harmful interference in a residential installation. This equipment generates uses and can radiate radio frequency energy and, if not installed and used in accordance with the instructions, may cause harmful interference to radio communications. However, there is no guarantee that interference will not occur in a particular installation. If this equipment does cause harmful interference to radio or television reception, which can be determined by turning the equipment off and on, the user is encouraged to try to correct the interference by one or more of the following measures:</p> <ul style="list-style-type: none"> · Reorient or relocate the receiving antenna. · Increase the separation between the equipment and receiver. · Connect the equipment into an outlet on a circuit different from that to which the receiver is connected. · Consult the dealer or an experienced radio/TV technician for help. <p>Radiation Exposure Statement</p> <p>This equipment complies with FCC radiation exposure limits set forth for an uncontrolled environment. This equipment should be installed and operated with minimum distance 20cm between the radiator and your body.</p>	<p>ISED Statement</p> <ul style="list-style-type: none"> - English: This device complies with Industry Canada license - exempt RSS standard(s). Operation is subject to the following two conditions: (1) This device may not cause interference, and (2) This device must accept any interference, including interference that may cause undesired operation of the device. The digital apparatus complies with Canadian CAN ICES - 3 (B)/NMB - 3(B). - French: Le présent appareil est conforme aux CNR d'Industrie Canada applicables aux appareils radio exempts de licence. L'exploitation est autorisée aux deux conditions suivantes: (1) l'appareil ne doit pas produire de brouillage, et (2) l'utilisateur de l'appareil doit accepter tout brouillage radioélectrique subi, même si le brouillage est susceptible d'en compromettre le fonctionnement. <p>This radio transmitter has been approved by Industry Canada to operate with the antenna types listed with the maximum permissible gain indicated. Antenna types not included in this list, having a gain greater than the maximum gain indicated for that type, are strictly prohibited for use with this device.</p> <p>Le présent émetteur radio a été approuvé par Industrie Canada pour fonctionner avec les types d'antenne énumérés ci-dessous et ayant un gain admissible maximal. Les types d'antenne non inclus dans cette liste, et dont le gain est supérieur au gain maximal indiqué, sont strictement interdits pour l'exploitation de l'émetteur.</p>
---	---