



Smart Bedside Lamp User Manual

Any problems please follow Gosund
on  and consult the service staff

-1-

►Foreword

Welcome to gosund . This user guide is intended to provide you important information about gosund Wi-Fi Smart lamp , It is suggested that you read this user guide before installing the lamp , If you have any questions, please feel free to contact us at **service.eu@gosund.com** Our customer service team will reply to you as soon as possible.

►Product Package

1. Smart Bedside Lamp
2. User Manual
3. USB Cable
4. Power Supply

►Product Structure



-2-

►Wi-Fi SMART LAMP

Model	LB3
Input Voltage	5V
Input Current	2A
Rated Power	6W
Luminous Flux	350 Lm(Max)
Color Temperature	2700k-3100k
LED Color	RGB+W

►Download "Gosund" APP

1. Search "Gosund" App on App Store, Google Play or scan the QR code below and install it.
2. Please open the "Gosund" App. Click register and type in your email address to automatically create an account, otherwise type in your phone number to get a verification code to register an account. If you already have a "Gosund" account, simply click login with your account.

-3-

3. The free APP "Gosund" is compatible with mobile devices that supports IOS 8.0 above and Android 4.4 above.



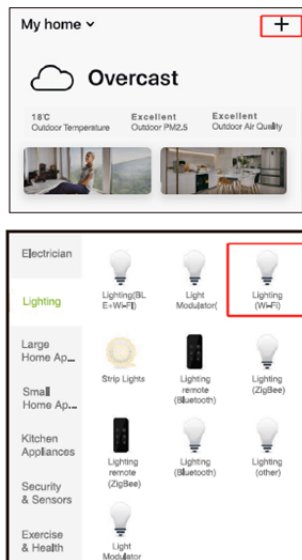
Gosund

►Connecting the device with "Gosund" APP

A. Easy Mode (Recommend)

1. Please open "Gosund" App. Tap the "Add Device" or the "+" sign at the upper right hand corner of the page and select "Lighting"

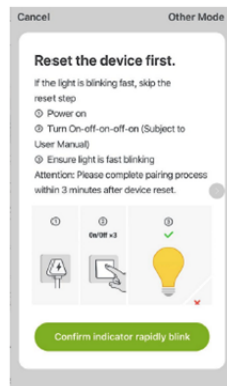
-4-



2. Please make sure that the gosund Smart Lamp is installed correctly.
3. To switch to Easy mode, you can get the lamp rapidly flash after long touch

-5-

"gosund" on the lamp for 5 seconds. Make sure the lamp is now rapidly flashing and confirm it in the app.

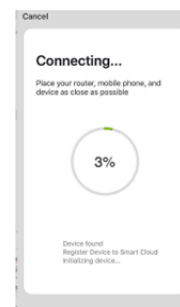


4. Choose your Home Wi-Fi (make sure your phone is connected to 2.4GHz Wi-Fi channel not 5GHz) and enter the correct password. If the Wi-Fi network is 5GHz or the password is incorrect, it will lead to "connection failure".

-6-



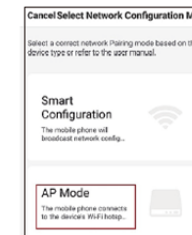
5. Finally, wait to successfully configure, then tap "Completed".



-7-

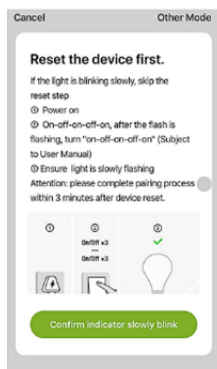
B.AP Mode

1. Please switch to "Other Mode", click "AP Mode"



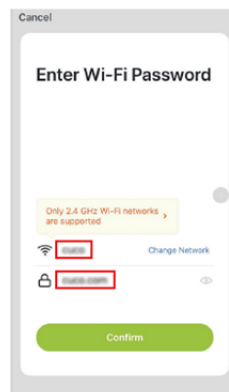
-8-

2. To switch to AP mode, you can get the lamp slowly flash after long touch "gosund" on the lamp for 5 seconds based rapidly flash.
3. Make sure The Lamp is flashing slowly and confirm it in APP.



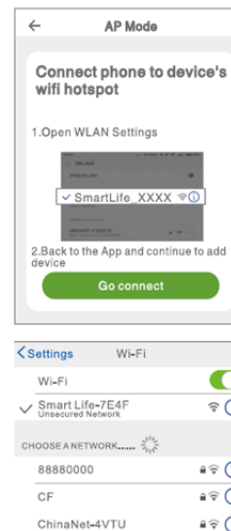
4. Choose your home Wi-Fi and enter the correct password then confirm it in APP

-9-



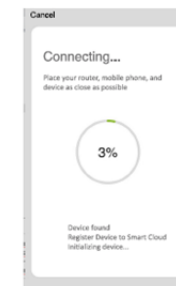
5. Choose Wi-Fi hotspot named "Smart Life XXX", If it shows, the current WLAN network cannot access the Internet. Switch to another network?", just tap "CANCEL" and to back to the "Gosund APP".

-10-



-11-

6. Finally, wait to successfully configure and tap "Completed".



Note: if the connection fails in "AP Mode", please check if your router is dual-band Wi-Fi. If it is dual-band Wi-Fi, please enter the router management interface to split 2.4G and 5G Wi-Fi, and then connect 2.4G Wi-Fi.

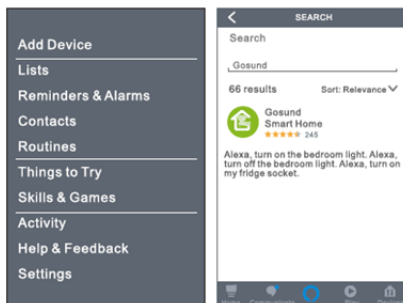
► Using Amazon Echo Quick Guide What You'll Need...

Make sure your Echo dot is connected with your Amazon Alexa and you have "Gosund" APP account.

A. Enable our Skill in Alexa APP

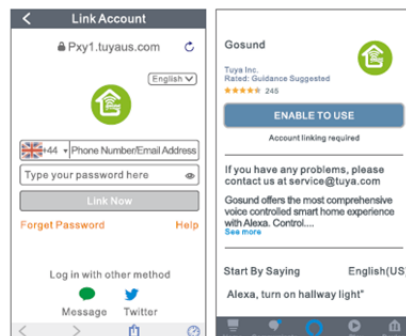
-12-

Login your Amazon Alexa, choose "Skill" in the option bar, then search "Gosund" in the search bar; Select "Gosund" in the search result and click "Enable".



1. Input your account and password that you have registered at "Gosund" APP. When you set the right page, it means your Alexa account is connected with your "Gosund" account.

-13-



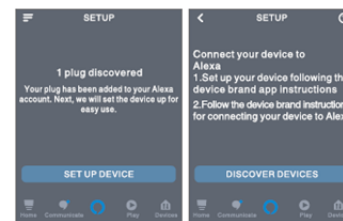
B. Control Smart Bulb by Voice

After Alexa is linked to your "Gosund" APP, you can now control the lamp via Echo.

1. Discovering device simply say to Echo: "Echo (or Alexa), discover my device." or choose "add device" to discover the smart lamp. Echo will start to find the device which is added in "Gosund" APP. It will take about 20 seconds to show the result. Or you may click "Discover device" on the Alexa APP, it will successfully show available devices.

-14-

Note: Echo is one of the wake-up name, the other two names are Alexa and Amazon.



2. Support Skill List

You can control devices by instruction like below:

"Alexa, turn on/off (name of the smart lamp)"

"Alexa, turn on the light."

"Alexa, turn off the light"

Note: The name of the lamp must be consistent with the name of the lamp on the "Gosund" APP. The name is recommended to use easy pronunciation of English words. (Amazon Echo just supports English temporarily.)

-15-

► After-sale & Warranty

All gosund products come with a limited warranty of 12 months from the date of purchase. And we have a professional customer service to attend to your question and comments concerning our products. Please do not hesitate to contact us at

service.eu@gosund.com
or at our Official Facebook page.

We will do our best to help you resolve any problems you might have about our products until you are satisfied. We appreciate your support and cooperation.



-16-

<p>FCC Warning</p> <p>This device complies with part 15 of the FCC rules. Operation is subject to the following two conditions: (1) this device may not cause harmful interference, and (2) this device must accept any interference received, including interference that may cause undesired operation.</p> <p>Changes or modifications not expressly approved by the party responsible for compliance could void the user's authority to operate the equipment.</p> <p>NOTE: This equipment has been tested and found to comply with the limits for a Class B digital device, pursuant to part 15 of the FCC Rules. These limits are designed to provide reasonable protection against harmful interference in a residential installation. This equipment generates uses and can radiate radio frequency energy and, if not installed and used in accordance with the instructions, may cause harmful interference to radio communications. However, there is no guarantee that interference will not occur in a particular installation. If this equipment does cause harmful interference to radio or television reception, which can be determined by turning the equipment off and on, the user is encouraged to try to correct the interference by one or more of the following measures:</p> <ul style="list-style-type: none"> • Reorient or relocate the receiving antenna. • Increase the separation between the equipment and receiver. • Connect the equipment into an outlet on a circuit different from that to which the receiver is connected. • Consult the dealer or an experienced radio/TV technician for help. <p>Radiation Exposure Statement</p> <p>This equipment complies with FCC radiation exposure limits set forth for an uncontrolled environment. This equipment should be installed and operated with minimum distance 20cm between the radiator and your body.</p>	<p>ISED Statement</p> <p>- English: This device complies with Industry Canada license - exempt RSS standard(s). Operation is subject to the following two conditions: (1) This device may not cause interference, and (2) This device must accept any interference, including interference that may cause undesired operation of the device. The digital apparatus complies with Canadian CAN ICES - 3 (B)/NMB - 3(B).</p> <p>- French: Le présent appareil est conforme aux CNR d'Industrie Canada applicables aux appareils radio exempts de licence. L'exploitation est autorisée aux deux conditions suivantes: (1) l'appareil ne doit pas produire de brouillage, et (2) l'utilisateur de l'appareil doit accepter tout brouillage radioélectrique subi, même si le brouillage est susceptible d'en compromettre le fonctionnement.</p> <p>This radio transmitter has been approved by Industry Canada to operate with the antenna types listed with the maximum permissible gain indicated. Antenna types not included in this list, having a gain greater than the maximum gain indicated for that type, are strictly prohibited for use with this device.</p> <p>Le présent émetteur radio a été approuvé par Industrie Canada pour fonctionner avec les types d'antenne énumérés ci-dessous et ayant un gain admissible maximal. Les types d'antenne non inclus dans cette liste, et dont le gain est supérieur au gain maximal indiqué, sont strictement interdits pour l'exploitation de l'émetteur.</p>
--	--