

FCC SAR

Measurement and Test Report

For


Hunan Greatwall Computer System CO., LTD

Hunan GreatWall Industrial Park, Tianyi Science and Technology

City, Xiangyun Middle Road, Tianyuan District, Zhuzhou, Hunan

Test Standards:	<u>FCC Part 2.1093,</u> <u>ANSI / IEEE C95.1 :2005+A1:2010</u> <u>ANSI / IEEE C95.3 :2002(R2008)</u>
Product Description:	<u>onn. Laptop</u>
Tested Model:	<u>100003497</u>
Report No.:	<u>WTE19X07046178W</u>
Sample Received Date:	<u>2019-07-09</u>
Tested Date:	<u>2019-07-09 to 2019-07-23</u>
Issued Date:	<u>2019-07-23</u>
Tested By:	<u>Ruler Liu / Engineer</u> <i>Ruler Liu</i>
Reviewed By:	<u>Silin Chen / EMC Manager</u> <i>Silin chen</i>
Approved & Authorized By:	<u>Jandy So / PSQ Manager</u> <i>Jandyso</i>
Prepared By:	

Shenzhen SEM Test Technology Co., Ltd.
1/F, Building A, Hongwei Industrial Park, Liuxian 2nd Road,
Bao'an District, Shenzhen, P.R.C. (518101)
Tel.: +86-755-33663308 Fax.: +86-755-33663309 Website: www.semtest.com.cn



Note: This test report is limited to the above client company and the product model only. It may not be duplicated without prior permitted by Shenzhen SEM. Test Technology Co., Ltd.

TABLE OF CONTENTS

1. General Information3

 1.1 Product Description for Equipment Under Test (EUT).....3

 1.2 Test Standards5

 1.3 Test Methodology.....5

 1.4 Test Facility5

2. Summary of Test Results6

3. Specific Absorption Rate (SAR).....7

 3.1 Introduction.....7

 3.2 SAR Definition7

4. SAR Measurement System.....8

 4.1 The Measurement System8

 4.2 Probe.....8

 4.3 Probe Calibration Process10

 4.4 Phantom11

 4.5 Device Holder11

 4.6 Test Equipment List.....12

5. Tissue Simulating Liquids.....13

 5.1 Composition of Tissue Simulating Liquid.....13

 5.2 Tissue Dielectric Parameters for Head and Body Phantoms14

 5.3 Tissue Calibration Result.....15

6. SAR Measurement Evaluation16

 6.1 Purpose of System Performance Check.....16

 6.2 System Setup16

 6.3 Validation Results.....17

7. EUT Testing Position18

 7.1 EUT Antenna Position18

 7.2 EUT Testing Position19

8. SAR Measurement Procedures.....20

 8.1 Measurement Procedures20

 8.2 Spatial Peak SAR Evaluation20

 8.3 Area & Zoom Scan Procedures.....21

 8.4 Volume Scan Procedures.....21

 8.5 SAR Averaged Methods21

 8.6 Power Drift Monitoring.....21

9. SAR Test Result22

 9.1 Conducted RF Output Power22

 9.2 Test Results for Standalone SAR Test.....27

 9.3 Simultaneous Multi-band Transmission SAR Analysis28

10. Measurement Uncertainty30

 10.1 Uncertainty for EUT SAR Test.....30

 10.2 Uncertainty for System Performance Check.....31

Annex A. Plots of System Performance Check33

Annex B. Plots of SAR Measurement.....41

Annex C. EUT Photos52

Annex D. Test Setup Photos54

Annex E. Calibration Certificate.....55

1. General Information

1.1 Product Description for Equipment Under Test (EUT)

Client Information

Applicant: Hunan Greatwall Computer System CO., LTD
Address of applicant: Hunan GreatWall Industrial Park, Tianyi Science and Technology City, Xiangyun Middle Road, Tianyuan District, Zhuzhou, Hunan

Manufacturer: Hunan Greatwall Computer System CO., LTD
Address of manufacturer: Hunan GreatWall Industrial Park, Tianyi Science and Technology City, Xiangyun Middle Road, Tianyuan District, Zhuzhou, Hunan

General Description of EUT:	
Product Name:	onn. Laptop
Trade Name:	/
Model No.:	100003497
Adding Model:	/
Rated Voltage:	Battery DC 7.6V
Battery capacity:	6000mAh
Software Version:	/
Hardware Version:	/
<i>Note: The test data is gathered from a production sample provided by the manufacturer.</i>	

Technical Characteristics of EUT:	
Wi-Fi(5G)	
Support Standards:	802.11a, 802.11n(HT20/40), 802.11ac(HT20/40/80)
Frequency Range:	Band 1: 5180-5240MHz,Band 2: 5260-5320MHz, Band 3: 5500-5700MHz,Band 4: 5745-5825MHz
RF Output Power:	11.993dBm(Conducted)
Type of Modulation:	BPSK, QPSK, 16-QAM, 64-QAM
Type of Antenna:	Integral Antenna
Antenna Gain:	5.61dBi
WIFI(2.4G)	
Support Standards:	802.11b, 802.11g, 802.11n
Frequency Range:	2412-2462MHz for 11b/g/n(HT20) 2422-2452MHz for 11n(HT40)
RF Output Power:	23.10dBm (Conducted)
Type of Modulation:	CCK, QPSK, BPSK, 16QAM, 64QAM
Data Rate:	1-11Mbps, 6-54Mbps, up to 150Mbps
Quantity of Channels:	11/7
Channel Separation:	5MHz
Antenna Type:	Integral Antenna
Antenna Gain:	2.47dBi
Bluetooth	
Bluetooth Version:	V5.0
Frequency Range:	2402-2480MHz
RF Output Power:	8.66dBm (Conducted)
Data Rate:	1Mbps, 2Mbps, 3Mbps
Modulation:	GFSK, Pi/4 QDPSK, 8DPSK
Quantity of Channels:	79/40
Channel Separation:	1MHz/2MHz
Antenna Type:	Integral Antenna
Antenna Gain:	2.47dBi

1.2 Test Standards

The following report is prepared on behalf of the Hunan Greatwall Computer System CO., LTD in accordance with FCC 47 CFR Part 2.1093, ANSI/IEEE C95.1-2005+A1:2010, ANSI / IEEE C95.3 :2002(R2008), IEEE 1528-2013, and KDB 865664 D01 v01r04 and KDB 865664 D02 v01r02 and KDB 616217 D04 v01r02 and 248227 D01 802 11 Wi-Fi SAR v02r02.

The objective is to determine compliance with FCC Part 2.1093 of the Federal Communication Commissions rules.

Maintenance of compliance is the responsibility of the manufacturer. Any modification of the product, which result in lowering the emission, should be checked to ensure compliance has been maintained.

1.3 Test Methodology

All measurements contained in this report were conducted with KDB 865664 D01 v01r04 and KDB 865664 D02 v01r02. The public notice KDB 447498 D01 v06 for Mobile and Portable Devices RF Exposure Procedure also.

1.4 Test Facility

FCC – Registration No.: 125990

Shenzhen SEM Test Technology Co., Ltd. Laboratory has been recognized to perform compliance testing on equipment subject to the Commissions Declaration Of Conformity (DOC). The Designation Number is CN5010, and Test Firm Registration Number is 125990.

Industry Canada (IC) Registration No.: 11464A

The 3m Semi-anechoic chamber of Shenzhen SEM.Test Technology Co., Ltd. has been registered by Certification and Engineering Bureau of Industry Canada for radio equipment testing with Registration No.: 11464A.

2. Summary of Test Results

The maximum results of Specific Absorption Rate (SAR) have found during testing are as follows:

Frequency Band	Body (0mm Gap)	SAR _{1g} Limit (W/kg)
	Maximum SAR _{1g} (W/kg)	
WLAN 2.4GHz	0.013	1.6
WLAN 5.3GHz	0.053	1.6
WLAN 5.6GHz	0.136	1.6
WLAN 5.8GHz	0.063	1.6
Simultaneous Transmission	0.467	1.6

Remark:

*The highest reported SAR values for body and simultaneous transmission conditions are **0.136W/kg** and **0.467W/kg** respectively.*

The device is in compliance with Specific Absorption Rate (SAR) for general population/uncontrolled exposure limits (1.6 W/kg) specified in FCC 47 CFR Part 2.1093 and ANSI/IEEE C95.1-2005+A1:2010, and had been tested in accordance with the measurement methods and procedure specified in KDB 865664 D01 v01r04 and KDB 865664 D02 v01r02

3. Specific Absorption Rate (SAR)

3.1 Introduction

SAR is related to the rate at which energy is absorbed per unit mass in an object exposed to a radio field. The SAR distribution in a biological body is complicated and is usually carried out by experimental techniques or numerical modeling. The standard recommends limits for two tiers of groups, occupational/controlled and general population/uncontrolled, based on a person's awareness and ability to exercise control over his or her exposure. In general, occupational/controlled exposure limits are higher than the limits for general population/uncontrolled.

3.2 SAR Definition

The SAR definition is the time derivative (rate) of the incremental energy (dW) absorbed by (dissipated in) an incremental mass (dm) contained in a volume element (dv) of a given density (ρ). The equation description is as below:

$$\text{SAR} = \frac{d}{dt} \left(\frac{dW}{dm} \right) = \frac{d}{dt} \left(\frac{dW}{\rho dv} \right)$$

SAR is expressed in units of Watts per kilogram (W/kg)

SAR measurement can be either related to the temperature elevation in tissue by

$$\text{SAR} = C \left(\frac{\delta T}{\delta t} \right)$$

Where: C is the specific heat capacity, δT is the temperature rise and δt is the exposure duration, or related to the electrical field in the tissue by

$$\text{SAR} = \frac{\sigma |E|^2}{\rho}$$

Where: σ is the conductivity of the tissue, ρ is the mass density of the tissue and E is the RMS electrical field strength.

However for evaluating SAR of low power transmitter, electrical field measurement is typically applied.

4. SAR Measurement System

4.1 The Measurement System

Comosar is a system that is able to determine the SAR distribution inside a phantom of human being according to different standards. The Comosar system consists of the following items:

- Main computer to control all the system
- 6 axis robot
- Data acquisition system
- Miniature E-field probe
- Phone holder
- Head simulating tissue

The following figure shows the system.



The EUT under test operating at the maximum power level is placed in the phone holder, under the phantom, which is filled with head simulating liquid. The E-Field probe measures the electric field inside the phantom. The OpenSAR software computes the results to give a SAR value in a 1g or 10g mass.

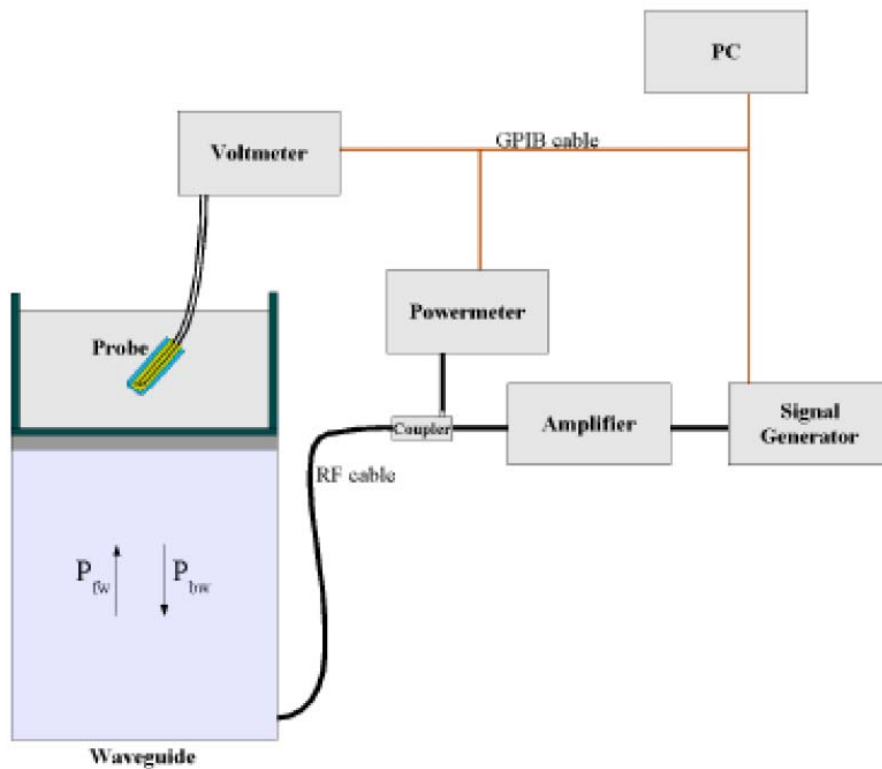
4.2 Probe

For the measurements the Specific Dosimetric E-Field Probe SSE5 SN 09/13 EP168 with following specifications is used

- Dynamic range: 0.01-100 W/kg
- Probe Length: 330 mm
- Length of Individual Dipoles: 4.5 mm
- Maximum external diameter: 8 mm
- Probe Tip External Diameter : 5 mm
- Distance between dipoles / probe extremity: 2.7mm

- Probe linearity: <0.25 dB
 - Axial Isotropy: <0.25 dB
 - Spherical Isotropy: <0.50 dB
 - Calibration range: 700 to 3000MHz for head & body simulating liquid.
- Angle between probe axis (evaluation axis) and surface normal line: less than 30°

Probe calibration is realized, in compliance with EN 62209-1 and IEEE 1528 STD, with CALISAR, Antenna proprietary calibration system. The calibration is performed with the EN 62209-1 annexe technique using reference guide at the five frequencies.



$$SAR = \frac{4(P_{fw} - P_{bw})}{ab\delta} \cos^2\left(\pi \frac{y}{a}\right) e^{-2z/\delta}$$

Where :

P_{fw} = Forward Power

P_{bw} = Backward Power

a and b = Waveguide dimensions

δ = Skin depth

Keithley configuration:

Rate = Medium; Filter = ON; RDGS = 10; Filter type = Moving Average; Range auto after each calibration, a SAR measurement is performed on a validation dipole and compared with a NPL calibrated probe, to verify it.

The calibration factors, CF(N), for the 3 sensors corresponding to dipole 1, dipole 2 and dipole 3 are:

$$CF(N)=SAR(N)/V_{lin}(N) \quad (N=1,2,3)$$

The linearised output voltage $V_{lin}(N)$ is obtained from the displayed output voltage $V(N)$ using

$$V_{lin}(N)=V(N)*(1+V(N)/DCP(N)) \quad (N=1,2,3)$$

where DCP is the diode compression point in mV.

4.3 Probe Calibration Process

Dosimetric Assessment Procedure

Each E-Probe/Probe Amplifier combination has unique calibration parameters. SATIMO Probe calibration procedure is conducted to determine the proper amplifier settings to enter in the probe parameters. The amplifier settings are determined for a given frequency by subjecting the probe to a known E-field density (1 mW/cm²) using an with CALISAR, Antenna proprietary calibration system.

Free Space Assessment Procedure

The free space E-field from amplified probe outputs is determined in a test chamber. This calibration can be performed in a TEM cell if the frequency is below 1 GHz and in a waveguide or other methodologies above 1 GHz for free space. For the free space calibration, the probe is placed in the volumetric center of the cavity and at the proper orientation with the field. The probe is rotated 360 degrees until the three channels show the maximum reading. The power density readings equates to 1mW/cm².

Temperature Assessment Procedure

E-field temperature correlation calibration is performed in a flat phantom filled with the appropriate simulated head tissue. The E-field in the medium correlates with the temperature rise in the dielectric medium. For temperature correlation calibration a RF transparent thermistor-based temperature probe is used in conjunction with the E-field probe.

Where:

$$SAR = C \frac{\Delta T}{\Delta t}$$

Δt = exposure time (30 seconds),

C = heat capacity of tissue (brain or muscle),

ΔT = temperature increase due to RF exposure.

SAR is proportional to $\Delta T/\Delta t$, the initial rate of tissue heating, before thermal diffusion takes place. The electric field in the simulated tissue can be used to estimate SAR by equating the thermally derived SAR to that with the E- field component.

$$\text{SAR} = \frac{|\mathbf{E}|^2 \cdot \sigma}{\rho}$$

Where:

σ = simulated tissue conductivity,

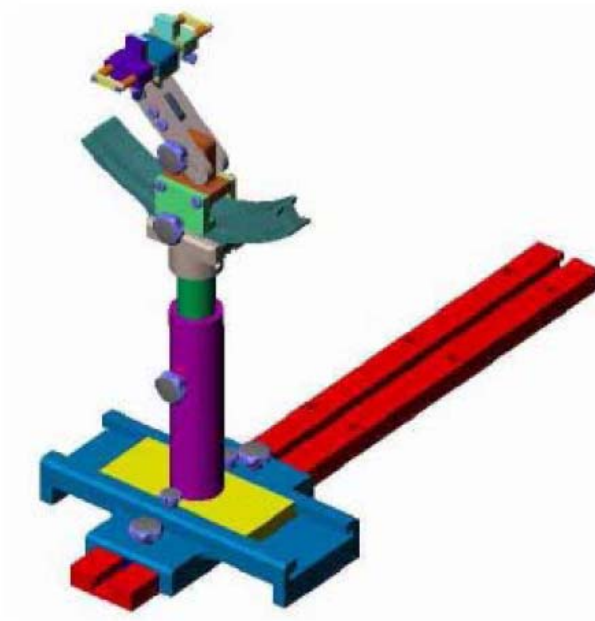
ρ = Tissue density (1.25 g/cm³ for brain tissue)

4.4 Phantom

For the measurements the Specific Anthropomorphic Mannequin (SAM) defined by the IEEE SCC-34/SC2 group is used. The phantom is a polyurethane shell integrated in a wooden table. The thickness of the phantom amounts to 2mm +/- 0.2mm. It enables the dosimetric evaluation of left and right phone usage and includes an additional flat phantom part for the simplified performance check. The phantom set-up includes a cover, which prevents the evaporation of the liquid.

4.5 Device Holder

The positioning system allows obtaining cheek and tilting position with a very good accuracy. In compliance with CENELEC, the tilt angle uncertainty is lower than 1°.



System Material	Permittivity	Loss Tangent
Delrin	3.7	0.005

4.6 Test Equipment List

Description	Manufacturer	Model	Serial Number	Cal. Date	Due. Date
E-Field Probe	MVG	SSE5	SN 09/13 EP168	2019-05-22	2020-05-21
E-Field Probe	MVG	SSE2	SN 08/16 EPGO298	2018-09-10	2019-09-09
2450MHz Dipole	MVG	SID2450	SN 13/15 DIP 2G450-364	2019-03-16	2020-03-15
5 GHz Waveguide	MVG	SWG5500	SN 49/16 WGA45	2018-08-01	2019-07-31
Dielectric Probe Kit	SATIMO	SCLMP	SN 47/12 OCPG49	2019-03-16	2020-03-15
SAM Phantom	SATIMO	SAM	SN/ 47/12 SAM95	N/A	N/A
MULTIMETER	KEITHLEY	Keithley 2000	4006367	2019-04-30	2020-04-29
Power meter	Keithley	3500	JC-2017-09-001	2019-04-30	2020-04-29
Power meter	Keithley	3500	JC-2017-09-001	2019-04-30	2020-04-29
Power Sensor	Agilent	11636B	JC-2017-10-002	2019-04-30	2020-04-29
Signal Generator	Rohde & Schwarz	SMR20	100047	2019-04-30	2020-04-29
Spectrum Analyzer	Agilent	E4407B	MY41440400	2019-04-30	2020-04-29
Universal Tester	Rohde & Schwarz	CMU200	112012	2019-04-30	2020-04-29
Network Analyzer	HP	8753C	SEMT-1064	2019-04-30	2020-04-29
Directional Couplers	Agilent	778D	20160	2019-04-30	2020-04-29

5. Tissue Simulating Liquids

5.1 Composition of Tissue Simulating Liquid

For the measurement of the field distribution inside the SAM phantom with SMTIMO, the phantom must be filled with around 25 liters of homogeneous body tissue simulating liquid. For head SAR testing, the liquid height from the ear reference point (ERP) of the phantom to the liquid top surface is larger than 15 cm. For body SAR testing, the liquid height from the center of the flat phantom to the liquid top surface is larger than 15 cm. Please see the following photos for the liquid height.



Liquid Height for Body SAR

The Composition of Tissue Simulating Liquid

Frequency (MHz)	Water (%)	Salt (%)	Sugar (%)	HEC (%)	Preventol (%)	DGBE (%)
Body						
2450	68.6	0.1	0	0	0	31.3

Frequency (MHz)	Water (%)	Hexyl Carbitol (%)	Triton X-100 (%)
Body			
5200-5800	78.6	10.7	10.7

5.2 Tissue Dielectric Parameters for Head and Body Phantoms

The IEEE Std. 1528, FCC KDBs and CEI/IEC 62209 standards state that the system validation measurements must be performed using a reference dipole meeting the fore mentioned return loss and mechanical dimension requirements. The validation measurement must be performed against a liquid filled flat phantom, with the phantom constructed as outlined in the fore mentioned standards. Per the standards, the dipole shall be positioned below the bottom of the phantom, with the dipole length centered and parallel to the longest dimension of the flat phantom, with the top surface of the dipole at the described distance from the bottom surface of the phantom.

Target Frequency (MHz)	Head		Body	
	Conductivity (σ)	Permittivity (ϵ_r)	Conductivity (σ)	Permittivity (ϵ_r)
150	0.76	52.3	0.80	61.9
300	0.87	45.3	0.92	58.2
450	0.87	43.5	0.94	56.7
750	0.89	41.9	0.96	55.5
835	0.90	41.5	0.97	55.2
900	0.97	41.5	1.05	55.0
915	0.98	41.5	1.06	55.0
1450	1.20	40.5	1.30	54.0
1610	1.29	40.3	1.40	53.8
1800-2000	1.40	40.0	1.52	53.3
2450	1.80	39.2	1.95	52.7
3000	2.40	38.5	2.73	52.0
5200	4.66	36.0	5.30	49.0
5300	35.9	4.76	5.42	48.9
5600	5.07	35.5	5.77	48.5
5800	5.27	35.3	6.00	48.2

5.3 Tissue Calibration Result

The dielectric parameters of the liquids were verified prior to the SAR evaluation using COMOSAR Dielectric Probe Kit and an Agilent Network Analyzer.

Calibration Result for Dielectric Parameters of Tissue Simulating Liquid

Body Tissue Simulating Liquid									
Freq. MHz.	Temp. (°C)	Conductivity			Permittivity			Limit (%)	Date
		Reading (σ)	Target (σ)	Delta (%)	Reading (ϵ_r)	Target (ϵ_r)	Delta (%)		
2450	21.3	1.91	1.95	-2.05	52.01	52.70	-1.31	±5	2019-07-18
5300	21.3	5.26	5.42	-2.95	48.50	48.9	-0.82	±5	2019-07-19
5600	21.3	5.52	5.77	-4.33	48.30	48.5	-0.41	±5	2019-07-19
5800	21.3	5.76	6.00	-4.00	48.10	48.2	-0.21	±5	2019-07-19

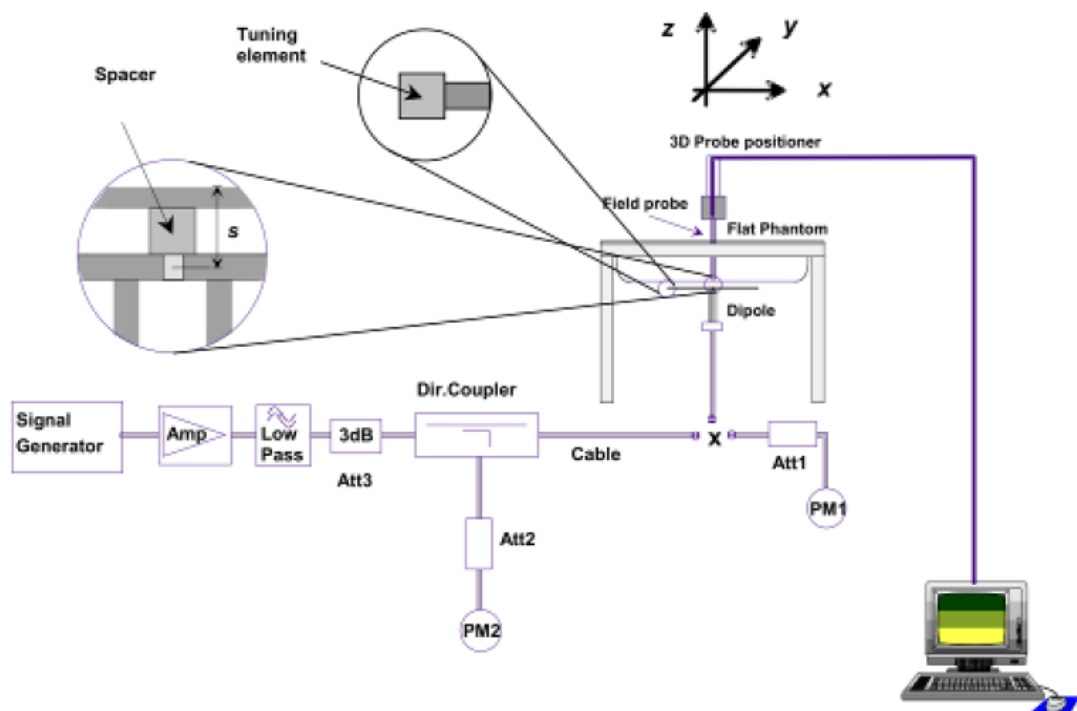
6. SAR Measurement Evaluation

6.1 Purpose of System Performance Check

The system performance check verifies that the system operates within its specifications. System and operator errors can be detected and corrected. It is recommended that the system performance check be performed prior to any usage of the system in order to guarantee reproducible results. The system performance check uses normal SAR measurements in a simplified setup with a well characterized source. This setup was selected to give a high sensitivity to all parameters that might fail or vary over time. The system check does not intend to replace the calibration of the components, but indicates situations where the system uncertainty is exceeded due to drift or failure.

6.2 System Setup

In the simplified setup for system evaluation, the EUT is replaced by a calibrated dipole and the power source is replaced by a continuous wave which comes from a signal generator at frequency 2450MHz and 5000MHz. The calibrated dipole must be placed beneath the flat phantom section of the SAM twin phantom with the correct distance holder. The distance holder should touch the phantom surface with a light pressure at the reference marking and be oriented parallel to the long side of the phantom.



System Verification Setup Block Diagram



Setup Photo of Dipole Antenna

The output power on dipole port must be calibrated to 24 dBm(250 mW) before dipole is connected.
 The output power on 5 GHz Waveguide must be calibrated to 20 dBm (100mW) before 5 GHz Waveguide is connected.

6.3 Validation Results

Comparing to the original SAR value provided by SATIMO, the validation data should be within its specification of 10 %. Table 6.1 shows the target SAR and measured SAR after normalized to 1W input power. The table below indicates the system performance check can meet the variation criterion.

Frequency MHz	Targeted SAR _{1g} (W/kg)	Measured SAR _{1g} (W/kg)	Normalized SAR _{1g} (W/kg)	Tolerance (%)
Body				
2450	50.41	12.59	50.36	-0.10

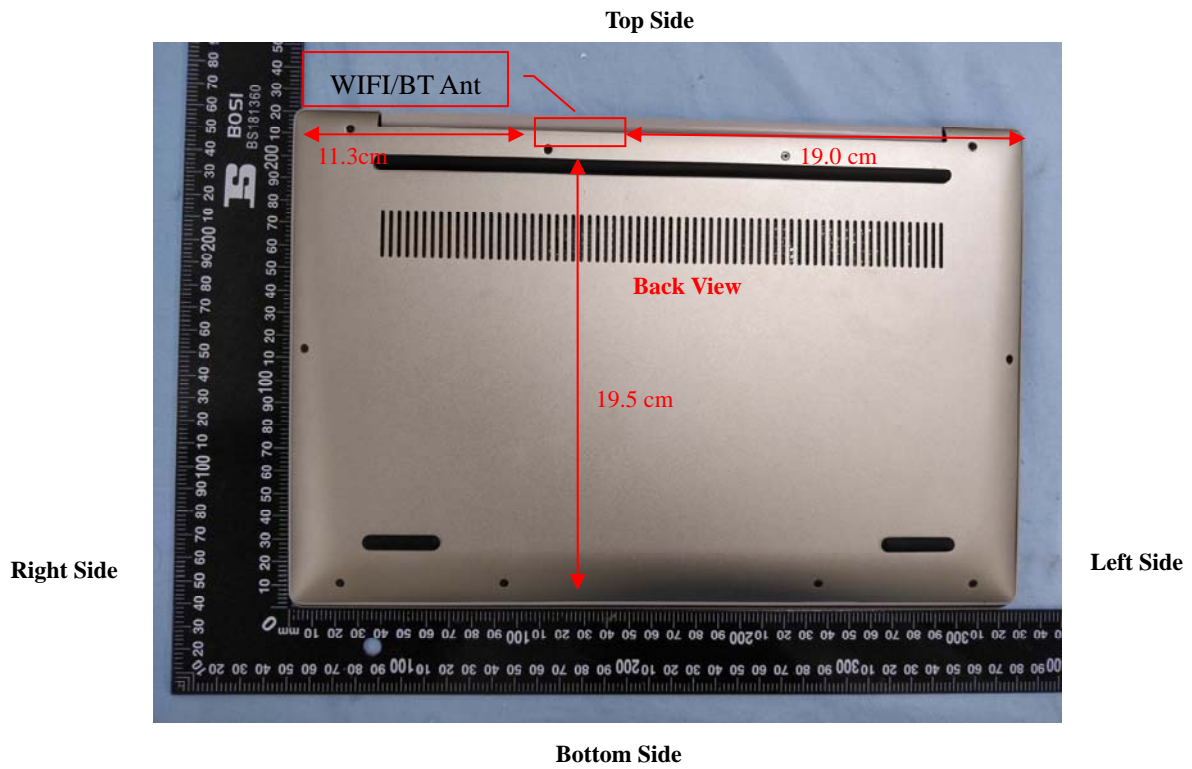
Frequency	Liquid	Power (mw)	Targeted SAR _{1g}	Measured SAR _{1g}	Normalized SAR _{1g}	Tolerance
5400	Body	100	163.31	17.330	173.3	6.12
5600	Body	100	165.72	17.111	171.11	3.25
5800	Body	100	170.71	16.946	169.46	-0.73

Targeted and Measurement SAR

Please refer to Annex A for the plots of system performance check.

7. EUT Testing Position

7.1 EUT Antenna Position



Block Diagram for EUT Antenna Position

7.2 EUT Testing Position

Exclusion Distance Calculation				
Frequency Bands	Service	Maximum Tune-up Power	Average Power	Exclusion Distance
WLAN(2.4G)	802.11b	18.0dBm	18.0dBm	40mm
WLAN(2.4G)	802.11g	23.5dBm	23.5dBm	70mm
WLAN(5.3G)	802.11n	12.0dBm	12.0dBm	15mm
WLAN(5.6G)	802.11n	12.0dBm	12.0dBm	15mm
WLAN(5.8G)	802.11n	12.0dBm	12.0dBm	15mm

Note: Refer to Chapter 9.1 Conducted RF Output Power

Remark:

- Referring to KDB 447498 D01v06, the distance of the antennas to all adjacent edges SAR test exclusion for adjacent edges.

Body mode SAR assessments are required for this device. This EUT was tested in different positions for different SAR test modes, more information as below:

Body SAR tests, Test distance: 0mm						
Antennas	Front	Back	Right Side	Left Side	Top Side	Bottom
WLAN(2.4G)	No	Yes	No	No	Yes	No
WLAN(5.3G)	No	Yes	No	No	Yes	No
WLAN(5.6G)	No	Yes	No	No	Yes	No
WLAN(5.8G)	No	Yes	No	No	Yes	No

Remark:

- Referring to KDB 616217 D04 v01r02, KDB 248227 D01 v02r02 and KDB 447498 D01 v06, this device is overall diagonal dimension(>20cm) tablet, tested in direct contact (no gap) with flat phantom.
- Referring to KDB 616217 D04 v01r02, Exposures from antennas through the front (top) surface of the display section of a full-size tablet, away from the edges, are generally limited to the user's hands. Exposures to hands for typical consumer transmitters used in tablets are not expected to exceed the extremity SAR limit; therefore, SAR evaluation for the front surface of tablet display screens are generally not necessary.

Please refer to Annex D for the EUT test setup photos.

8. SAR Measurement Procedures

8.1 Measurement Procedures

The measurement procedures are as follows:

- (a) Use base station simulator (if applicable) or engineering software to transmit RF power continuously (continuous Tx) in the highest power channel.
- (b) Keep EUT to radiate maximum output power or 100% factor (if applicable)
- (c) Measure output power through RF cable and power meter.
- (d) Place the EUT in the positions as Annex D demonstrates.
- (e) Set scan area, grid size and other setting on the SATIMO software.
- (f) Measure SAR results for the highest power channel on each testing position.
- (g) Find out the largest SAR result on these testing positions of each band
- (h) Measure SAR results for other channels in worst SAR testing position if the SAR of highest power channel is larger than 0.8 W/kg

According to the test standard, the recommended procedure for assessing the peak spatial-average SAR value consists of the following steps:

- (a) Power reference measurement
- (b) Area scan
- (c) Zoom scan
- (d) Power drift measurement

8.2 Spatial Peak SAR Evaluation

The procedure for spatial peak SAR evaluation has been implemented according to the test standard. It can be conducted for 1g and 10g, as well as for user-specific masses. The SATIMO software includes all numerical procedures necessary to evaluate the spatial peak SAR value.

The base for the evaluation is a "cube" measurement. The measured volume must include the 1g and 10g cubes with the highest averaged SAR values. For that purpose, the center of the measured volume is aligned to the interpolated peak SAR value of a previously performed area scan.

The entire evaluation of the spatial peak values is performed within the post-processing engine. The system always gives the maximum values for the 1g and 10g cubes. The algorithm to find the cube with highest averaged SAR is divided into the following stages:

- (a) Extraction of the measured data (grid and values) from the Zoom Scan
- (b) Calculation of the SAR value at every measurement point based on all stored data
- (c) Generation of a high-resolution mesh within the measured volume
- (d) Interpolation of all measured values from the measurement grid to the high-resolution grid
- (e) Extrapolation of the entire 3D field distribution to the phantom surface over the distance from sensor to surface
- (f) Calculation of the averaged SAR within masses of 1g and 10g

8.3 Area & Zoom Scan Procedures

First Area Scan is used to locate the approximate location(s) of the local peak SAR value(s). The measurement grid within an Area Scan is defined by the grid extent, grid step size and grid offset. Next, in order to determine the EM field distribution in a three-dimensional spatial extension, Zoom Scan is required. The Zoom Scan measures 5x5x7 points with step size 8, 8 and 5 mm for 300 MHz to 3 GHz, and 8x8x8 points with step size 4, 4 and 2.5 mm for 3 GHz to 6 GHz. The Zoom Scan is performed around the highest E-field value to determine the averaged SAR-distribution over 10 g.

8.4 Volume Scan Procedures

The volume scan is used for assess overlapping SAR distributions for antennas transmitting in different frequency bands. It is equivalent to an oversized zoom scan used in standalone measurements. The measurement volume will be used to enclose all the simultaneous transmitting antennas. For antennas transmitting simultaneously in different frequency bands, the volume scan is measured separately in each frequency band. In order to sum correctly to compute the 1g aggregate SAR, the EUT remain in the same test position for all measurements and all volume scan use the same spatial resolution and grid spacing (step-size is 4, 4 and 2.5 mm). When all volume scan were completed, the software can combine and subsequently superpose these measurement data to calculating the multiband SAR.

8.5 SAR Averaged Methods

The local SAR inside the phantom is measured using small dipole sensing elements inside a probe body. The probe tip must not be in contact with the phantom surface in order to minimize measurements errors, but the highest local SAR will occur at the surface of the phantom.

An extrapolation is using to determinate this highest local SAR values. The extrapolation is based on a fourth-order least-square polynomial fit of measured data. The local SAR value is then extrapolated from the liquid surface with a 1mm step.

The measurements have to be performed over a limited time (due to the duration of the battery) so the step of measurement is high. It could vary between 5 and 8 mm. To obtain an accurate assessment of the maximum SAR averaged over 10g and 1 g requires a very fine resolution in the three dimensional scanned data array.

8.6 Power Drift Monitoring

All SAR testing is under the EUT install full charged battery and transmit maximum output power. In SATIMO measurement software, the power reference measurement and power drift measurement procedures are used for monitoring the power drift of EUT during SAR test. Both these procedures measure the field at a specified reference position before and after the SAR testing. The software will calculate the field difference in dB. If the power drift more than 5%, the SAR will be retested.

9. SAR Test Result

9.1 Conducted RF Output Power

WLAN - Maximum Average Power					
Test Mode	Data Rate	Channel	Frequency (MHz)	Average Power (dBm)	Tune-up power (dBm)
802.11b	1Mbps	CH 01	2412	17.41	18.0
		CH 06	2437	17.62	18.0
		CH 11	2462	17.75	18.0
802.11g	6Mbps	CH 01	2412	22.62	23.0
		CH 06	2437	22.99	23.0
		CH 11	2462	22.97	23.0
802.11n (20MHz)	MCS0	CH 01	2412	22.56	23.5
		CH 06	2437	22.98	23.5
		CH 11	2462	23.10	23.5
802.11n (40MHz)	MCS0	CH 03	2422	20.71	22.5
		CH 06	2437	22.18	22.5
		CH 09	2452	21.15	22.5

Remark:

1. Per KDB 248227 D01 v02r02, For 802.11b DSSS SAR measurements, DSSS SAR procedure applies to fixed exposure test position and initial test position procedure applies to multiple exposure test positions.
2. Per KDB 248227 D01 v02r02, For 802.11b DSSS SAR measurements, when the reported SAR of the highest measured maximum output power channel (see 3.1) for the exposure configuration is ≤ 0.8 W/kg, no further SAR testing is required for 802.11b DSSS in that exposure configuration. When the reported SAR is > 0.8 W/kg, SAR is required for that exposure configuration using the next highest measured output power channel. When any reported SAR is > 1.2 W/kg, SAR is required for the third channel; i.e., all channels require testing.
3. For OFDM modes (802.11g/n), SAR is not required when the highest reported SAR for DSSS is adjusted by the ratio of OFDM to DSSS specified maximum output power and it is ≤ 1.2 W/kg.

WLAN(5.2G) - Maximum Average Power				
Test Mode	Channel	Frequency	Average Power	Tune-up power
		(MHz)	(dBm)	(dBm)
802.11a	CH 36	5180	11.373	12.0
	CH 40	5200	11.475	12.0
	CH 48	5240	11.667	12.0
802.11n (20MHz)	CH 36	5180	11.404	12.0
	CH 40	5200	11.492	12.0
	CH 48	5240	11.641	12.0
802.11ac (20MHz)	CH 36	5180	11.401	12.0
	CH 40	5200	11.432	12.0
	CH 48	5240	11.685	12.0
802.11n (40MHz)	CH 38	5190	11.617	12.0
	CH 46	5230	11.824	12.0
802.11ac(40MHz)	CH 38	5190	11.516	12.0
	CH 46	5230	11.849	12.0
802.11ac(80MHz)	CH 42	5210	11.637	12.0

WLAN(5.3G) - Maximum Average Power				
Test Mode	Channel	Frequency	Average Power	Tune-up power
		(MHz)	(dBm)	(dBm)
802.11a	CH 52	5260	11.495	12.0
	CH 56	5280	11.714	12.0
	CH 64	5320	11.872	12.0
802.11n (20MHz)	CH 52	5260	11.523	12.0
	CH 56	5280	11.725	12.0
	CH 64	5320	11.924	12.0
802.11ac (20MHz)	CH 52	5260	11.487	12.0
	CH 56	5280	11.657	12.0
	CH 64	5320	11.831	12.0
802.11n (40MHz)	CH 54	5270	11.653	12.0
	CH 62	5310	11.957	12.0
802.11ac(40MHz)	CH 54	5270	11.661	12.0
	CH 62	5310	11.993	12.0
802.11ac(80MHz)	CH 58	5290	11.600	12.0

WLAN(5.6G) - Maximum Average Power				
Test Mode	Channel	Frequency	Average Power	Tune-up power
		(MHz)	(dBm)	(dBm)
802.11a	CH 100	5500	11.084	11.5
	CH 120	5600	11.140	11.5
	CH 140	5700	11.427	11.5
802.11n (20MHz)	CH 100	5500	11.112	11.5
	CH 120	5600	11.132	11.5
	CH 140	5700	10.909	11.5
802.11ac (20MHz)	CH 100	5500	11.048	11.5
	CH 120	5600	11.091	11.5
	CH 140	5700	10.880	11.5
802.11n (40MHz)	CH 102	5510	11.477	12.0
	CH 134	5670	11.594	12.0
802.11ac(40MHz)	CH 102	5510	11.409	12.0
	CH 134	5670	11.591	12.0
802.11ac(80MHz)	CH 106	5530	11.568	12.0
	CH 122	5610	11.421	12.0

WLAN(5.8G) - Maximum Average Power				
Test Mode	Channel	Frequency	Average Power	Tune-up power
		(MHz)	(dBm)	(dBm)
802.11a	CH 149	5745	11.462	11.5
	CH 157	5785	11.290	11.5
	CH 165	5825	11.074	11.5
802.11n (20MHz)	CH 149	5745	11.476	11.5
	CH 157	5785	11.340	11.5
	CH 165	5825	11.094	11.5
802.11ac (20MHz)	CH 149	5745	11.466	11.5
	CH 157	5785	11.294	11.5
	CH 165	5825	11.033	11.5
802.11n (40MHz)	CH 151	5755	11.801	12.0
	CH 159	5795	11.444	12.0
802.11ac(40MHz)	CH 151	5755	11.826	12.0
	CH 159	5795	11.361	12.0
802.11ac(80MHz)	CH 155	5775	11.565	12.0

Remark:

1. Per KDB 248227 D01 v02r02, SAR is not required for the following U-NII-1 and U-NII-2A bands conditions.
 - a. When the same maximum output power is specified for both bands, begin SAR measurement in U-NII-2A band by applying the OFDM SAR requirements. If the highest reported SAR for a test configuration is ≤ 1.2 W/kg, SAR is not required for U-NII-1 band for that configuration (802.11 mode and exposure condition); otherwise, each band is tested independently for SAR.
 - b. When different maximum output power is specified for the bands, begin SAR measurement in the band with higher specified maximum output power. The highest reported SAR for the tested configuration is adjusted by the ratio of lower to higher specified maximum output power for the two bands. When the adjusted SAR is ≤ 1.2 W/kg, SAR is not required for the band with lower maximum output power in that test configuration; otherwise, each band is tested independently for SAR.
2. When multiple channel bandwidth configurations in a frequency band have the same specified maximum output power, the initial test configuration is determined by applying the following steps sequentially.
 - 1) The largest channel bandwidth configuration is selected among the multiple configurations in a frequency band with the same specified maximum output power.
 - 2) If multiple configurations have the same specified maximum output power and largest channel bandwidth, the lowest order modulation among the largest channel bandwidth configurations is selected.
 - 3) If multiple configurations have the same specified maximum output power, largest channel bandwidth and lowest order modulation, the lowest data rate configuration among these configurations is selected.
 - 4) When multiple transmission modes (802.11a/g/n/ac) have the same specified maximum output power, largest channel bandwidth, lowest order modulation and lowest data rate, the lowest order 802.11 mode is selected; i.e., 802.11a is chosen over 802.11n then 802.11ac or 802.11g is chosen over 802.11n.

Bluetooth - Maximum Average Power			
Test Mode	Data Rate	Average Power(dBm)	Tune-up power (dBm)
GFSK	1Mbps	8.66	9.0
8DPSK	3Mbps	7.44	9.0

Bluetooth - Maximum Average Power					
Test Mode	Data Rate	Channel	Frequency (MHz)	Average Power (dBm)	Tune-up power (dBm)
BLE	1Mbps	CH 00	2402	4.83	5.5
		CH 19	2440	5.12	5.5
		CH 39	2480	4.38	5.5

Remark:

Bluetooth maximum output power is 8.66dBm, and Maximum Tune-Up output power is 9.0dBm. Per KDB 447498 D01 V06, the 1-g and 10-g SAR test exclusion thresholds for 100 MHz to 6 GHz at test separation distances ≤ 50 mm are determined by:

$[(\text{max. power of channel, including tune-up tolerance, mW}) / (\text{min. test separation distance, mm})] \cdot [\sqrt{f(\text{GHz})}] \leq 3.0$ for 1-g SAR and ≤ 7.5 for 10-g extremity SAR, 16 where

- f(GHz) is the RF channel transmit frequency in GHz
- Power and distance are rounded to the nearest mW and mm before calculation¹⁷
- The result is rounded to one decimal place for comparison

Tune-Up Power (dBm)	Max. Power (mW)	Distance (mm)	Frequency (GHz)	Result	Limit
9.0	7.94	5	2.441	2.48	3

The exclusion threshold is $2.48 < 3$, therefore, the RF exposure evaluation is not required.

9.2 Test Results for Standalone SAR Test

Body SAR

WLAN 2.4GHz –Body SAR Test									
Plot No.	Mode	Test Position Body	Frequency		Output Power (dBm)	Rated Limit (dBm)	Scaling Factor	SAR1g (W/kg)	Scaled SAR1g (W/kg)
			CH.	MHz					
1.	802.11b	Back Side	11	2462	17.75	18.0	1.059	0.012	0.013
2.	802.11b	Top	11	2462	17.75	18.0	1.059	0.009	0.010

WLAN 2.4GHz –Body SAR Test									
Plot No.	Mode	Test Position Body	Frequency		Output Power (dBm)	Rated Limit (dBm)	Scaling Factor	SAR1g (W/kg)	Scaled SAR1g (W/kg)
			CH.	MHz					
3.	802.11n	Back Side	11	2462	23.10	23.5	1.096	0.012	0.013
4.	802.11n	Top	11	2462	23.10	23.5	1.096	0.009	0.010

WLAN 5.3GHz– Body SAR Test									
Plot No.	Mode	Test Position Body	Frequency		Output Power (dBm)	Rated Limit (dBm)	Scaling Factor	SAR1g (W/kg)	Scaled SAR1g (W/kg)
			CH.	MHz					
5.	802.11ac_80	Back Side	58	5290	11.600	12.0	1.096	0.038	0.042
6.	802.11ac_80	Top	58	5290	11.600	12.0	1.096	0.048	0.053

WLAN 5.6GHz– Body SAR Test									
Plot No.	Mode	Test Position Body	Frequency		Output Power (dBm)	Rated Limit (dBm)	Scaling Factor	SAR1g (W/kg)	Scaled SAR1g (W/kg)
			CH.	MHz					
7.	802.11n_40	Back Side	134	5670	11.591	12.0	1.099	0.124	0.136
8.	802.11n_40	Top	134	5670	11.591	12.0	1.099	0.049	0.054

WLAN 5.8GHz– Body SAR Test									
Plot No.	Mode	Test Position Body	Frequency		Output Power (dBm)	Rated Limit (dBm)	Scaling Factor	SAR1g (W/kg)	Scaled SAR1g (W/kg)
			CH.	MHz					
9.	802.11n_40	Back Side	151	5755	11.826	12.0	1.041	0.061	0.063
10.	802.11n_40	Top	151	5755	11.826	12.0	1.041	0.056	0.058

Remark: Per KDB 447498 D01 v06, if the highest output channel SAR for each exposure position ≤ 0.8 W/kg other channels SAR tests are not necessary.

9.3 Simultaneous Multi-band Transmission SAR Analysis

List of Mode for Simultaneous Multi-band Transmission

No.	Configurations	Body SAR
1	WLAN(Data) + Bluetooth(Data)	Yes

Remark:

1. According to the KDB 447498 D01 v06, when standalone SAR test exclusion applies to an antenna that transmits simultaneously with other antennas, the standalone SAR must be estimated according to following to determine simultaneous transmission SAR test exclusion:

$(\text{max. power of channel, including tune-up tolerance, mW}) / (\text{min. test separation distance, mm}) \cdot [\sqrt{f(\text{GHz})} / x]$ W/kg for test separation distances ≤ 50 mm;

where $x = 7.5$ for 1-g SAR, and $x = 18.75$ for 10-g SAR.

For simultaneous transmission analysis, SAR is estimated per KDB 447498 D01 v06 as below:

Bluetooth:

Tune-Up Power (dBm)	Max. Power (mW)	Distance (mm)	Frequency (GHz)	X	SAR(1g) 5mm
9.0	7.94	5	2.441	7.5	0.331

2. The maximum SAR summation is calculated based on the same configuration and test position.

Body SAR
WLAN and Bluetooth

	WLAN(2.4G)	Bluetooth	Summed SAR (W/kg)
Position	Scaled SAR (W/kg)	Scaled SAR (W/kg)	
Back	0.013	0.331	0.344
Front	--	0.331	0.331
Top side	0.010	0.331	0.341
Bottom side	--	0.331	0.331
Right side	--	0.331	0.331
Left side	--	0.331	0.331

	WLAN(5.3G)	Bluetooth	Summed SAR (W/kg)
Position	Scaled SAR (W/kg)	Scaled SAR (W/kg)	
Back	0.042	0.331	0.373
Front	--	0.331	0.331
Top side	0.053	0.331	0.384
Bottom side	--	0.331	0.331
Right side	--	0.331	0.331
Left side	--	0.331	0.331

	WLAN(5.6G)	Bluetooth	Summed SAR (W/kg)
Position	Scaled SAR (W/kg)	Scaled SAR (W/kg)	
Back	0.136	0.331	0.467
Front	--	0.331	0.331
Top side	0.054	0.331	0.385
Bottom side	--	0.331	0.331
Right side	--	0.331	0.331
Left side	--	0.331	0.331

	WLAN(5.8G)	Bluetooth	Summed SAR (W/kg)
Position	Scaled SAR (W/kg)	Scaled SAR (W/kg)	
Back	0.063	0.331	0.394
Front	--	0.331	0.331
Top side	0.058	0.331	0.389
Bottom side	--	0.331	0.331
Right side	--	0.331	0.331
Left side	--	0.331	0.331

10. Measurement Uncertainty

10.1 Uncertainty for EUT SAR Test

a	b	c	d	e= f(d,k)	f	g	h= c*f/e	i= c*g/e	k
Uncertainty Component	Sec.	Tol (+- %)	Prob. Dist.	Div.	Ci (1g)	Ci (10g)	1g Ui (+- %)	10g Ui (+- %)	Vi
Measurement System									
Probe calibration	E.2.1	7.0	N	1	1	1	7.00	7.00	∞
Axial Isotropy	E.2.2	2.5	R	$\sqrt{3}$	$(1_{Cp})^{1/2}$	$(1_{Cp})^{1/2}$	1.02	1.02	∞
Hemispherical Isotropy	E.2.2	4.0	R	$\sqrt{3}$	$(Cp)^{1/2}$	$(Cp)^{1/2}$	1.63	1.63	∞
Boundary effect	E.2.3	1.0	R	$\sqrt{3}$	1	1	0.58	0.58	∞
Linearity	E.2.4	5.0	R	$\sqrt{3}$	1	1	2.89	2.89	∞
System detection limits	E.2.5	1.0	R	$\sqrt{3}$	1	1	0.58	0.58	∞
Readout Electronics	E.2.6	0.02	N	1	1	1	0.02	0.02	∞
Reponse Time	E.2.7	3.0	R	$\sqrt{3}$	1	1	1.73	1.73	∞
Integration Time	E.2.8	2.0	R	$\sqrt{3}$	1	1	1.15	1.15	∞
RF ambient Conditions – Noise	E.6.1	3.0	R	$\sqrt{3}$	1	1	1.73	1.73	∞
RF ambient Conditions - Reflections	E.6.1	3.0	R	$\sqrt{3}$	1	1	1.73	1.73	∞
Probe positioner Mechanical Tolerance	E.6.2	2.0	R	$\sqrt{3}$	1	1	1.15	1.15	∞
Probe positioning with respect to Phantom Shell	E.6.3	0.05	R	$\sqrt{3}$	1	1	0.03	0.03	∞
Extrapolation, interpolation and integration Algorithms for Max. SAR Evaluation	E.5	5.0	R	$\sqrt{3}$	1	1	2.89	2.89	∞
Test Sample Related									
Test sample positioning	E.4.2	0.03	N	1	1	1	0.03	0.03	N-1
Device Holder Uncertainty	E.4.1	5.00	N	1	1	1	5.00	5.00	
Output power Variation - SAR drift measurement	E.2.9	12.02	R	$\sqrt{3}$	1	1	6.94	6.94	∞
SAR scaling	E6.5	0.0	R	$\sqrt{3}$	1	1	0.0	0.0	∞
Phantom and Tissue Parameters									
Phantom Uncertainty (Shape and thickness tolerances)	E.3.1	0.05	R	$\sqrt{3}$	1	1	0.03	0.03	∞
Uncertainty in SAR correction for deviations in permittivity and conductivity	E3.2	1.9	R	$\sqrt{3}$	1	0.84	1.10	0.90	∞
Liquid conductivity - deviation	E.3.2	5.00	R	$\sqrt{3}$	0.64	0.43	1.85	1.24	∞

from target value										
Liquid conductivity measurement uncertainty	E.3.3	5.00	N	1	0.64	0.43	3.20	2.15	∞	
Liquid permittivity - deviation from target value	E.3.2	0.37	R	$\sqrt{3}$	0.6	0.49	0.13	0.10	∞	
Liquid permittivity measurement uncertainty	E.3.3	10.00	N	1	0.6	0.49	6.00	4.90	∞	
Combined Standard Uncertainty			RSS				12.98	12.53		
Expanded Uncertainty (95% Confidence interval)			K=2				25.32	24.43		

10.2 Uncertainty for System Performance Check

a	b	c	d	e= f(d,k)	f	g	h= c*f/e	i= c*g/e	k
Uncertainty Component	Sec.	Tol (+- %)	Prob. Dist.	Div.	Ci (1g)	Ci (10g)	1g Ui (+- %)	10g Ui (+- %)	Vi
Measurement System									
Probe calibration	E.2.1	7.0	N	1	1	1	7.00	7.00	∞
Axial Isotropy	E.2.2	2.5	R	$\sqrt{3}$	$(1_{Cp})^{1/2}$	$(1_{Cp})^{1/2}$	1.02	1.02	∞
Hemispherical Isotropy	E.2.2	4.0	R	$\sqrt{3}$	$(Cp)^{1/2}$	$(Cp)^{1/2}$	1.63	1.63	∞
Boundary effect	E.2.3	1.0	R	$\sqrt{3}$	1	1	0.58	0.58	∞
Linearity	E.2.4	5.0	R	$\sqrt{3}$	1	1	2.89	2.89	∞
System detection limits	E.2.5	1.0	R	$\sqrt{3}$	1	1	0.58	0.58	∞
Modulation response	E.2.5	0	R	$\sqrt{3}$	0	0	0.0	0.0	∞
Readout Electronics	E.2.6	0.02	N	1	1	1	0.02	0.02	∞
Reponse Time	E.2.7	3.0	R	$\sqrt{3}$	1	1	1.73	1.73	∞
Integration Time	E.2.8	2.0	R	$\sqrt{3}$	1	1	1.15	1.15	∞
RF ambient Conditions – Noise	E.6.1	3.0	R	$\sqrt{3}$	1	1	1.73	1.73	∞
RF ambient Conditions - Reflections	E.6.1	3.0	R	$\sqrt{3}$	1	1	1.73	1.73	∞
Probe positioner Mechanical Tolerance	E.6.2	2.0	R	$\sqrt{3}$	1	1	1.15	1.15	∞
Probe positioning with respect to Phantom Shell	E.6.3	0.05	R	$\sqrt{3}$	1	1	0.03	0.03	∞
Extrapolation, interpolation and integration Algorithms for Max.	E.5.2	5.0	R	$\sqrt{3}$	1	1	2.89	2.89	∞

SAR Evaluation									
Dipole									
Dipole axis to liquid Distance	8,E.4.2	1.00	N	$\sqrt{3}$	1	1	0.58	0.58	N-1
Input power and SAR drift measurement	8,6.6.2	12.02	R	$\sqrt{3}$	1	1	6.94	6.94	∞
Deviation of experimental dipole from numerical dipole	E.6.4	5.5	R	$\sqrt{3}$	1	1	3.20	3.20	∞
Phantom and Tissue Parameters									
Phantom Uncertainty (Shape and thickness tolerances)	E.3.1	0.05	R	$\sqrt{3}$	1	1	0.03	0.03	∞
Uncertainty in SAR correction for deviations in permittivity and conductivity	E3.2	2.0	R	$\sqrt{3}$	1	0.84	1.10	1.10	∞
Liquid conductivity - deviation from target value	E.3.2	5.00	R	$\sqrt{3}$	0.64	0.43	1.85	1.24	
Liquid conductivity - measurement uncertainty	E.3.3	5.00	N	1	0.64	0.43	3.20	2.15	
Liquid permittivity - deviation from target value	E.3.2	0.37	R	$\sqrt{3}$	0.6	0.49	0.13	0.10	
Liquid permittivity - measurement uncertainty	E.3.3	10.00	N	1	0.6	0.49	6.00	4.90	M
Combined Standard Uncertainty			RSS				12.00	11.50	
Expanded Uncertainty (95% Confidence interval)			K=2				23.39	22.43	

Annex A. Plots of System Performance Check

MEASUREMENT 1

For Body Liquid

Type: Validation measurement (Fast, 75.00 %)

Date of measurement: 07/18/2019

Measurement duration: 12 minutes 21 seconds

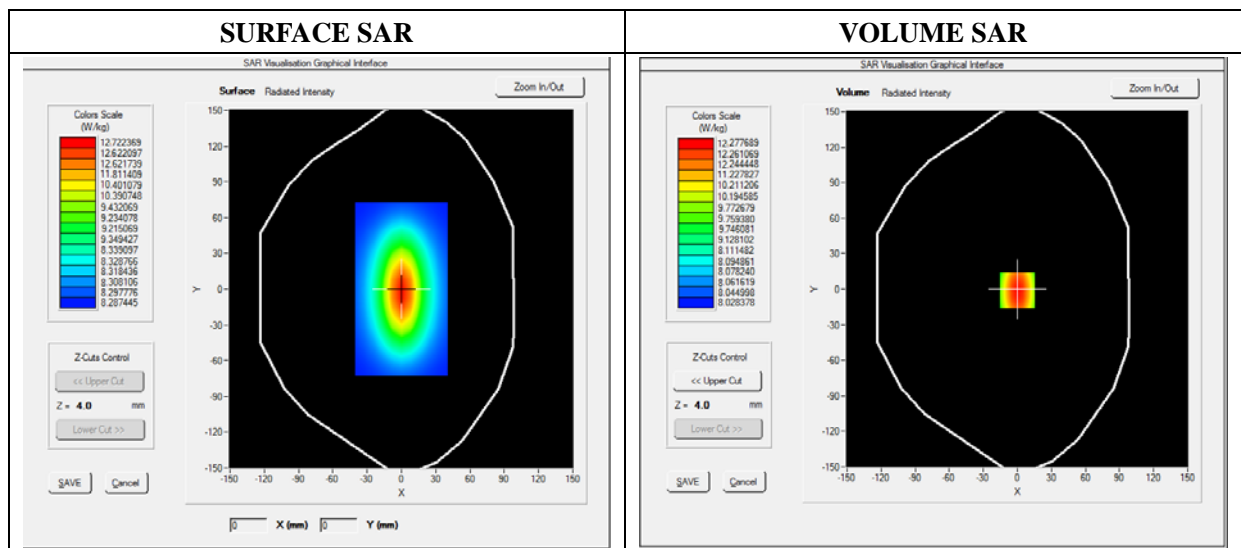
E-field Probe: SSE5 - SN 09/13 EP168; ConvF: 5.80; Calibrated: 05/22/2019

A. Experimental conditions

Area Scan	dx=8mm dy=8mm
Zoom Scan	dx=8mm dy=8mm dz=5mm
Phantom	Validation plane
Device Position	Dipole
Band	CW2450
Signal	Duty Cycle 1:1

B. SAR Measurement Results

Frequency (MHz)	2450.000000
Relative Permittivity (real part)	52.010212
Conductivity (S/m)	1.910255
Power Variation (%)	1.369745
Ambient Temperature	21.1
Liquid Temperature	21.2

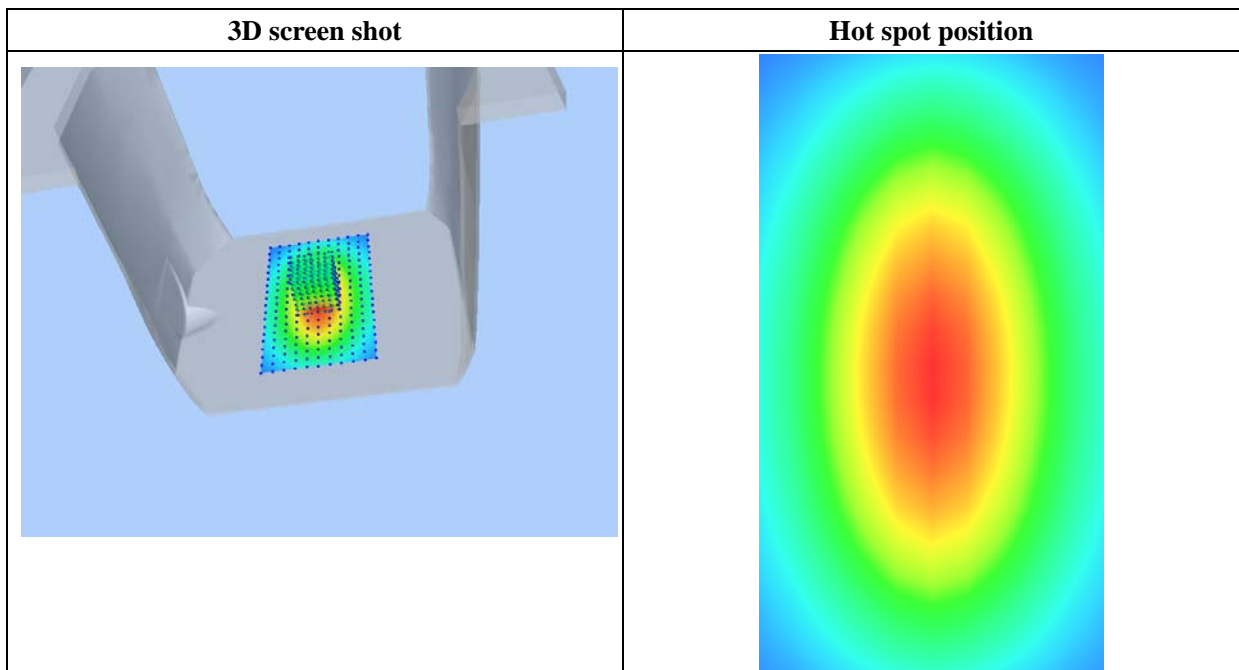
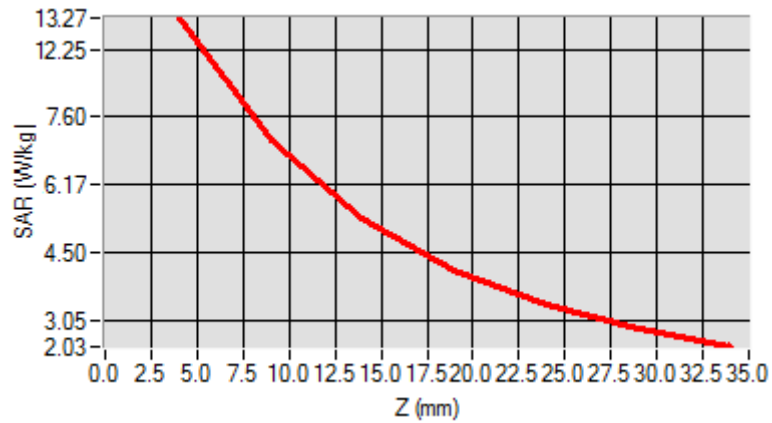


Maximum location: X=0.00, Y=0.00

SAR 10g (W/Kg)	6.119522
SAR 1g (W/Kg)	12.592360

Z Axis Scan

Z (mm)	0.00	4.00	9.00	14.00	19.00	24.00	29.00
SAR (W/Kg)	0.0000	13.1911	11.7951	9.2945	8.5400	6.3712	4.6225



MEASUREMENT 2

For Body Liquid

Type: Validation measurement (Fast, 75.00 %)

Date of measurement: 07/19/2019

Measurement duration: 12 minutes 21 seconds

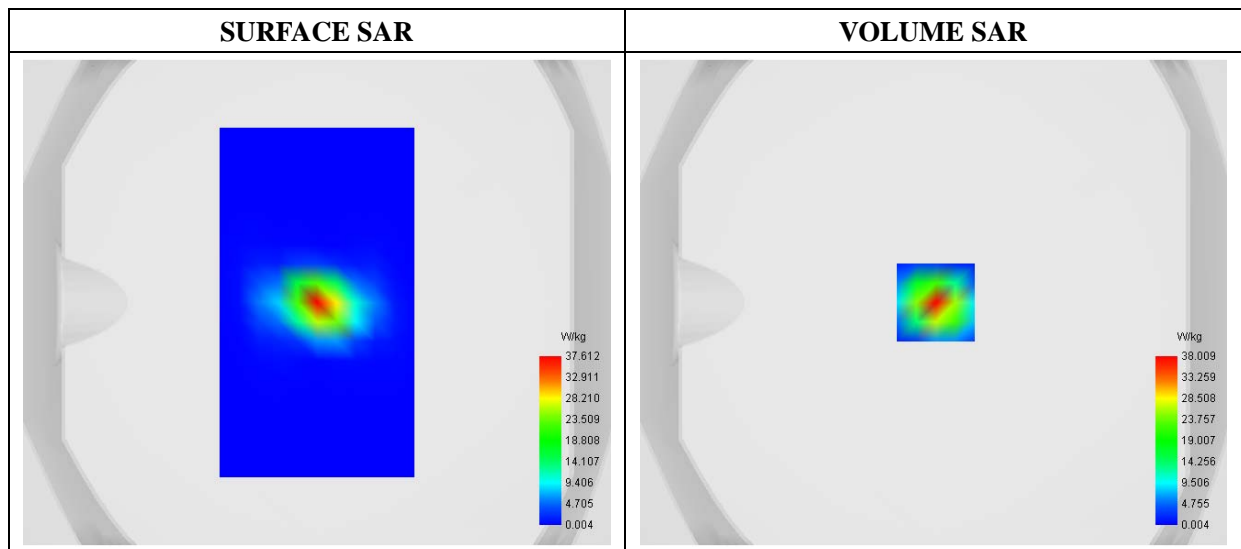
E-field Probe: SSE2 - SN 08/16 EPGO298; ConvF: 2.30; Calibrated: 09/10/2018

A. Experimental conditions

Area Scan	dx=8mm dy=8mm
Zoom Scan	dx=4mm dy=4mm dz=2mm
Phantom	Validation plane
Device Position	Dipole
Band	CW5400
Signal	CW (Crest factor: 1.0)

B. SAR Measurement Results

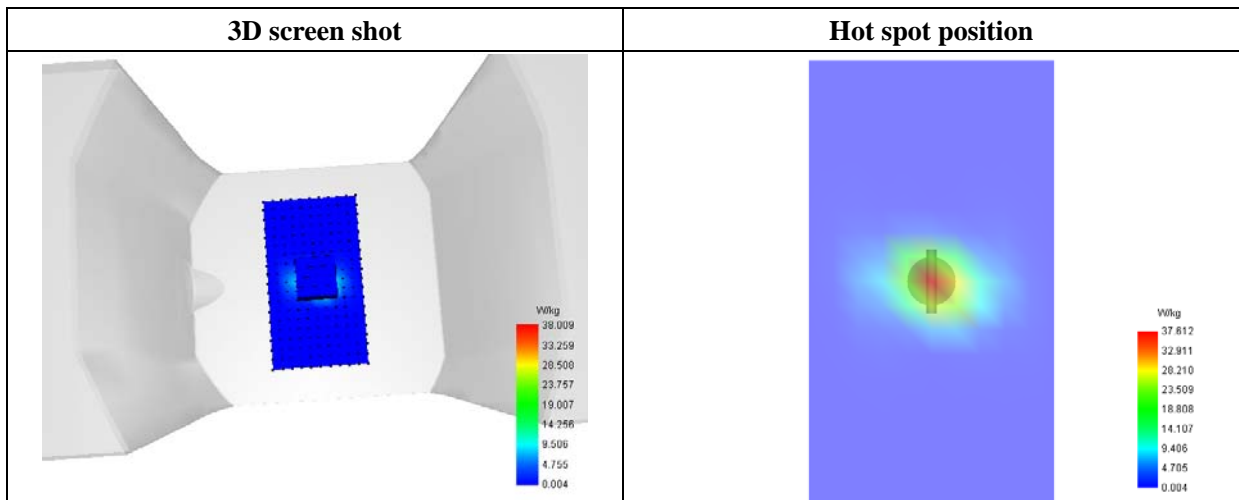
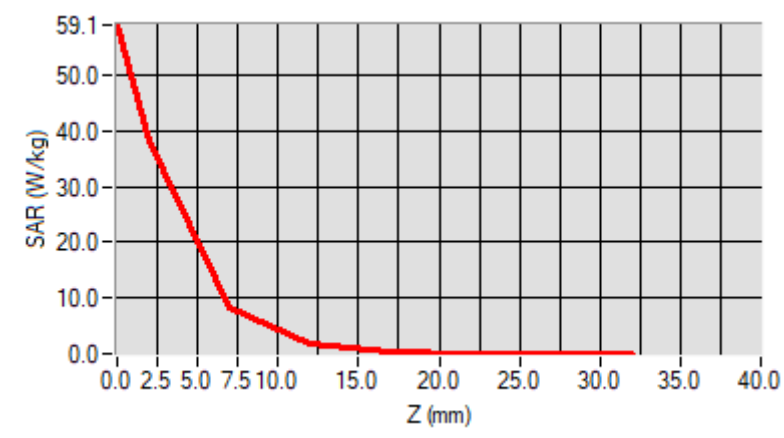
Frequency (MHz)	5400.000000
Relative Permittivity (real part)	48.502911
Conductivity (S/m)	5.261483
Power Variation (%)	0.943782
Ambient Temperature	21.1
Liquid Temperature	21.2



Maximum location: X=1.00, Y=0.00

SAR 10g (W/Kg)	5.872241
SAR 1g (W/Kg)	17.329716

Z (mm)	0.00	2.00	7.00	12.00	17.00	22.00	27.00
SAR (W/Kg)	59.0521	38.0093	8.3284	1.8732	0.3993	0.0816	0.0132



MEASUREMENT 3

For Body Liquid

Type: Validation measurement (Fast, 75.00 %)

Date of measurement: 07/19/2019

Measurement duration: 12 minutes 21 seconds

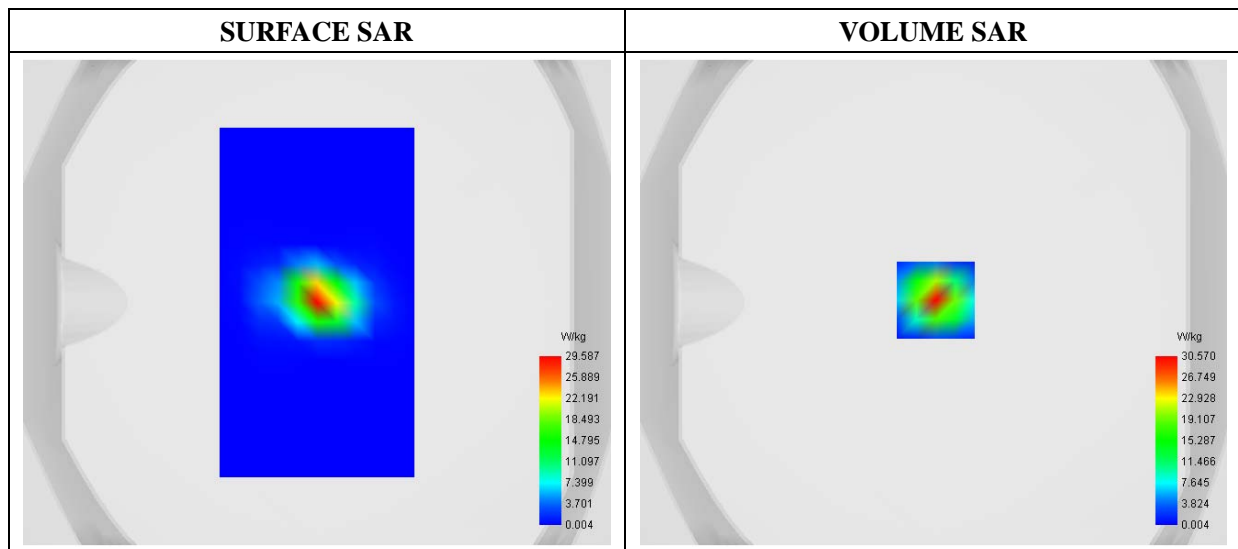
E-field Probe: SSE2 - SN 08/16 EPGO298; ConvF: 2.44; Calibrated: 09/10/2018

A. Experimental conditions

Area Scan	dx=8mm dy=8mm
Zoom Scan	dx=4mm dy=4mm dz=2mm
Phantom	Validation plane
Device Position	Dipole
Band	CW5600
Signal	Duty Cycle 1:1

B. SAR Measurement Results

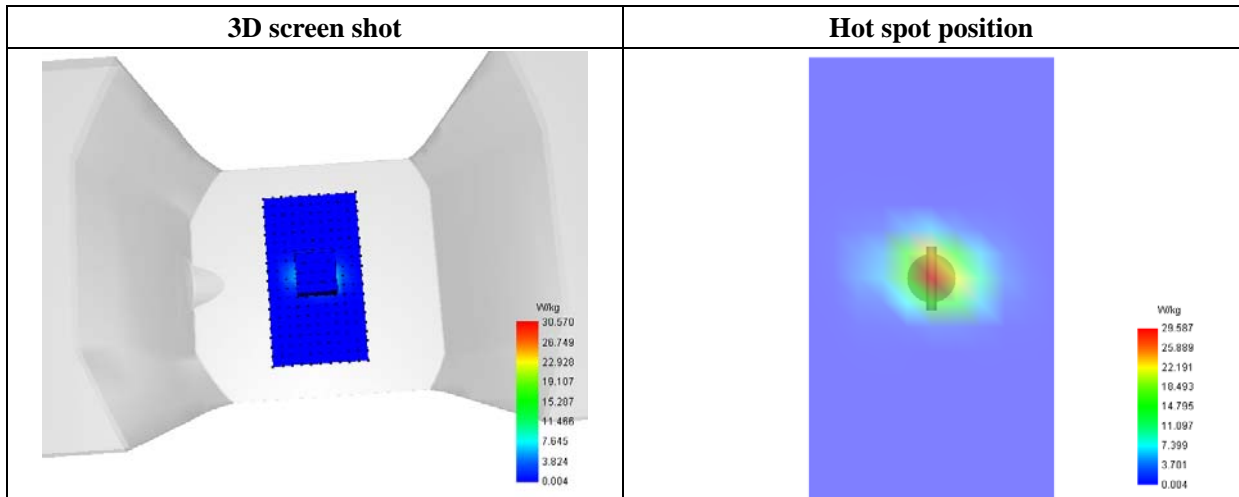
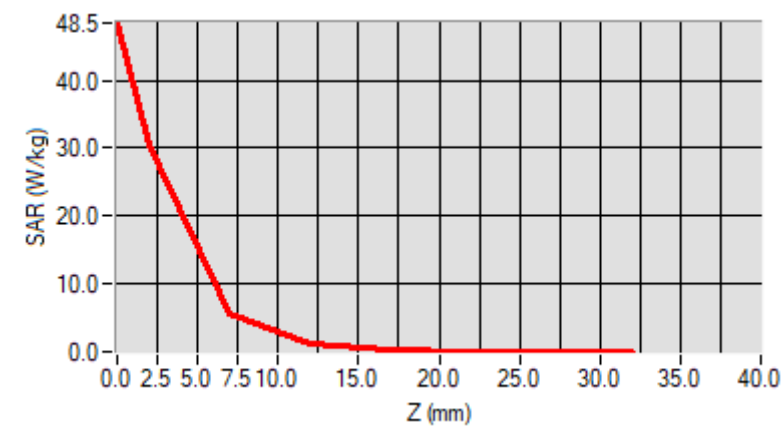
Frequency (MHz)	5600.000000
Relative Permittivity (real part)	48.302143
Conductivity (S/m)	5.521688
Power Variation (%)	0.749201
Ambient Temperature	21.1
Liquid Temperature	21.2



Maximum location: X=1.00, Y=1.00

SAR 10g (W/Kg)	5.912341
SAR 1g (W/Kg)	17.110732

Z (mm)	0.00	2.00	7.00	12.00	17.00	22.00	27.00
SAR (W/Kg)	48.4695	30.5699	5.7100	1.0698	0.1906	0.0364	0.0052



MEASUREMENT 4

For Body Liquid

Type: Validation measurement (Fast, 75.00 %)

Date of measurement: 07/19/2019

Measurement duration: 12 minutes 21 seconds

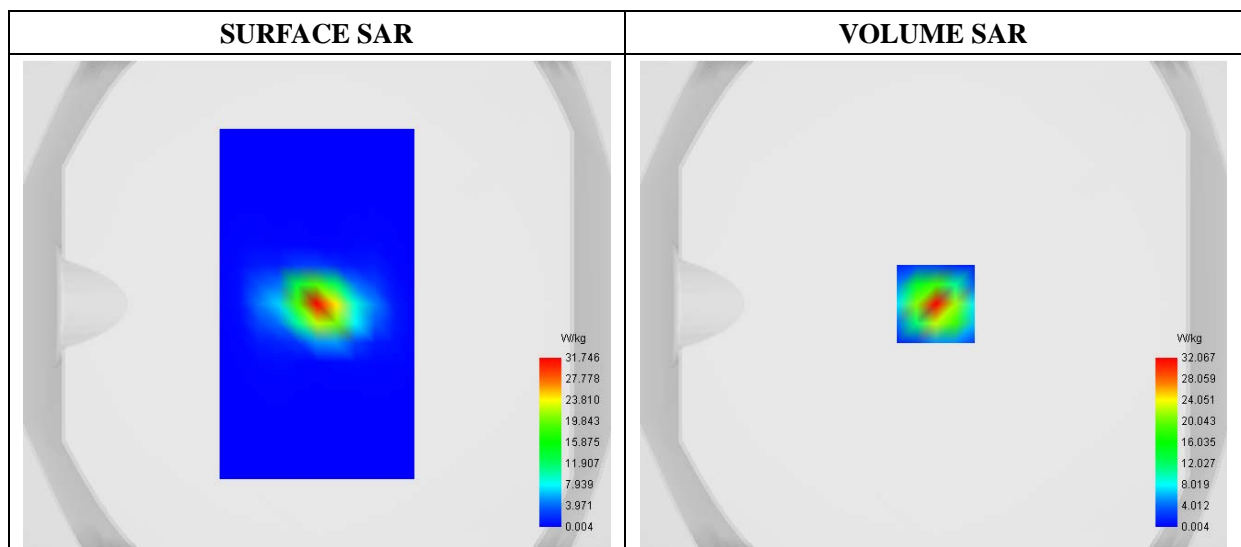
E-field Probe: SSE2 - SN 08/16 EPGO298; ConvF:2.50; Calibrated: 09/10/2018

A. Experimental conditions

Area Scan	dx=8mm dy=8mm
Zoom Scan	dx=4mm dy=4mm dz=2mm
Phantom	Validation plane
Device Position	Dipole
Band	CW5800
Signal	Duty Cycle 1:1

B. SAR Measurement Results

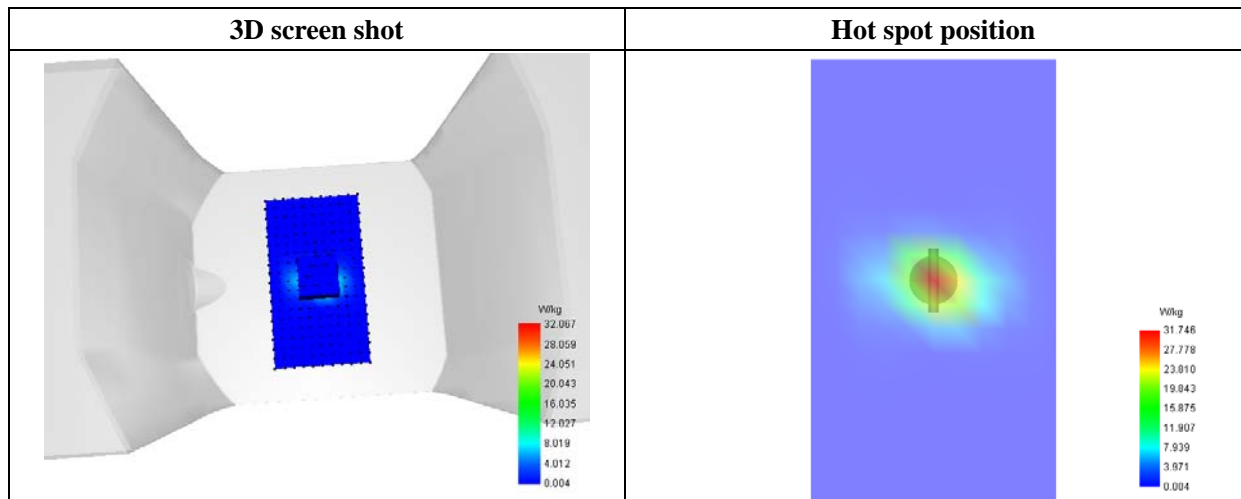
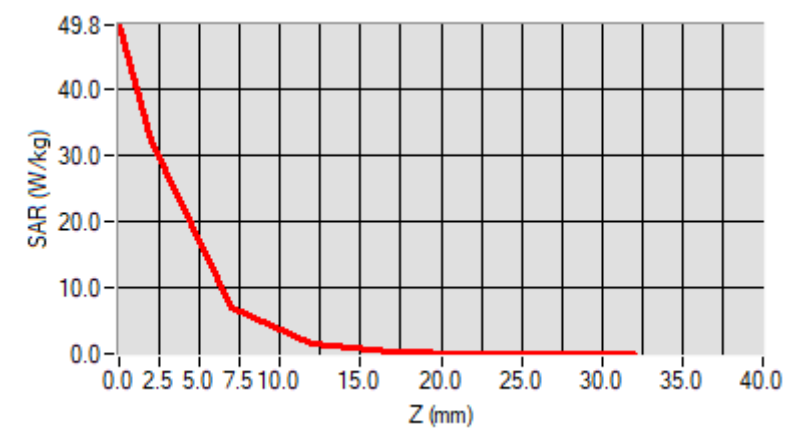
Frequency (MHz)	5800.000000
Relative Permittivity (real part)	48.101939
Conductivity (S/m)	5.761487
Power Variation (%)	0.836292
Ambient Temperature	21.1
Liquid Temperature	21.2



Maximum location: X=1.00, Y=0.00

SAR 10g (W/Kg)	6.047588
SAR 1g (W/Kg)	16.946175

Z (mm)	0.00	2.00	7.00	12.00	17.00	22.00	27.00
SAR (W/Kg)	49.8193	32.0669	7.0244	1.5969	0.3410	0.0635	0.0070



Annex B. Plots of SAR Measurement

<u>TYPE</u>	<u>BAND</u>	<u>PARAMETERS</u>
Tablet	WiFi(2.4G)_11b	<u>Measurement 1:</u> Flat Plane with Back side device position on High Channel in 802.11b mode
Tablet	WiFi(2.4G)_11n	<u>Measurement 3:</u> Flat Plane with Back side device position on High Channel in 802.11n mode
Tablet	WiFi(5.3G)_11ac_80	<u>Measurement 6:</u> Flat Plane with Top side device position on Middle Channel in 802.11ac mode
Tablet	WiFi(5.6G)_11n_40	<u>Measurement 7:</u> Flat Plane with Back side device position on High Channel in 802.11n mode
Tablet	WiFi(5.8G)_11n_40	<u>Measurement 9:</u> Flat Plane with Back side device position on Low Channel in 802.11n mode
<i>Remark: SAR plot is showed the highest measured SAR in each exposure configuration, wireless mode and frequency band combination.</i>		

MEASUREMENT 1

Type: Phone measurement (Complete)

Date of measurement: 07/18/2019

Measurement duration: 12 minutes 3 seconds

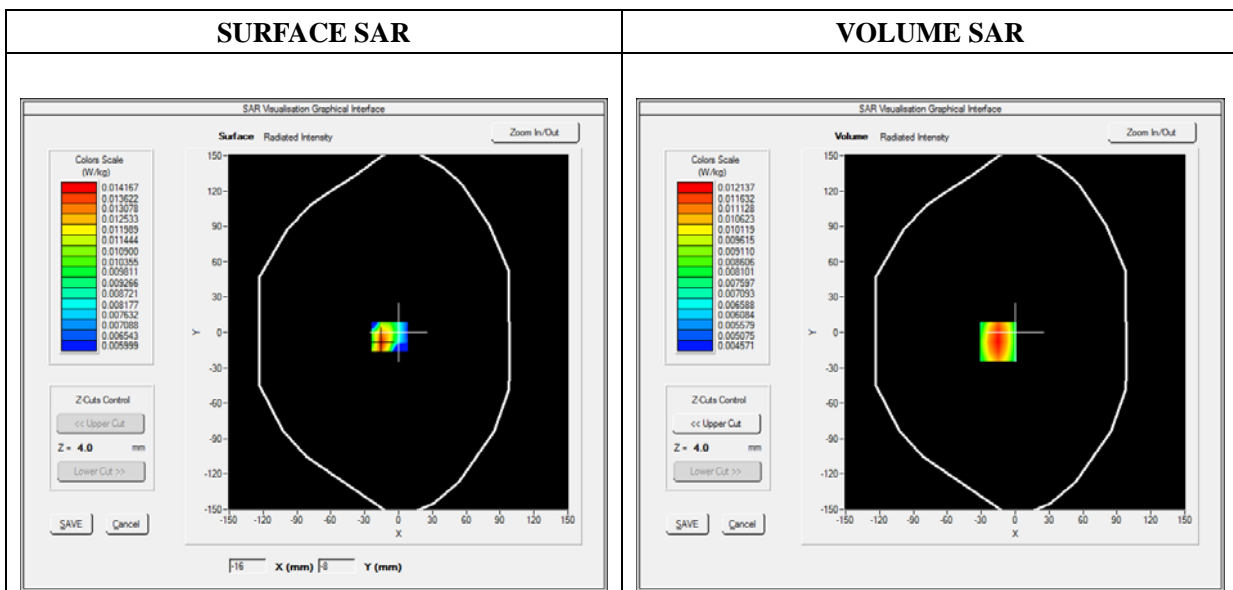
E-field Probe: SSE5 - SN 09/13 EP168; ConvF: 5.80; Calibrated: 05/22/2019

A. Experimental conditions

Area Scan	dx=8mm dy=8mm
Zoom Scan	dx=8mm dy=8mm dz=5mm
Phantom	Flat Plane
Device Position	Back
Band	WiFi_802.11b
Channels	High
Signal	Duty Cycle 1:1

B. SAR Measurement Results

Frequency (MHz)	2462.000000
Relative Permittivity (real part)	52.010212
Conductivity (S/m)	1.910255
Power Variation (%)	2.492743
Ambient Temperature	21.1
Liquid Temperature	21.2

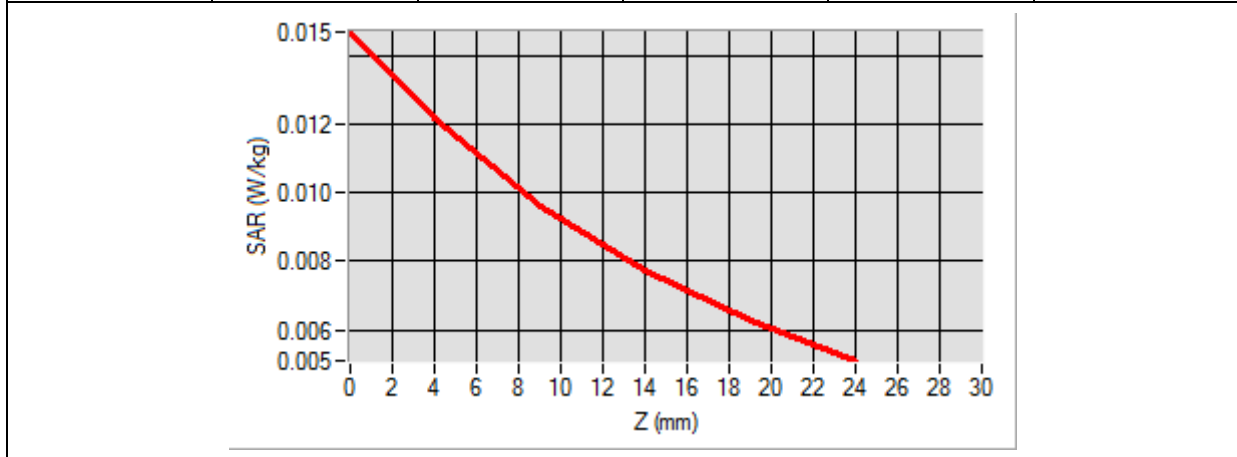


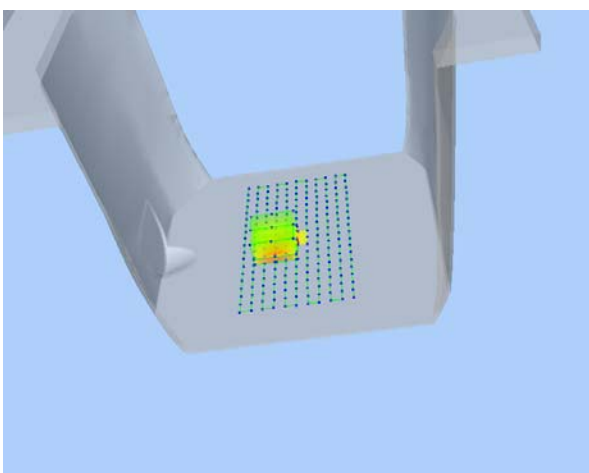
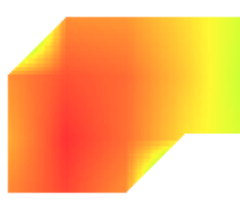
Maximum location: X=-15.00, Y=-8.00

SAR Peak: 0.02 W/kg

SAR 10g (W/Kg)	0.008657
SAR 1g (W/Kg)	0.011697

Z (mm)	0.00	4.00	9.00	14.00	19.00
SAR (W/Kg)	0.0147	0.0121	0.0096	0.0077	0.0063



3D screen shot	Hot spot position
	

MEASUREMENT 3

Type: Phone measurement (Complete)

Date of measurement: 07/18/2019

Measurement duration: 12 minutes 3 seconds

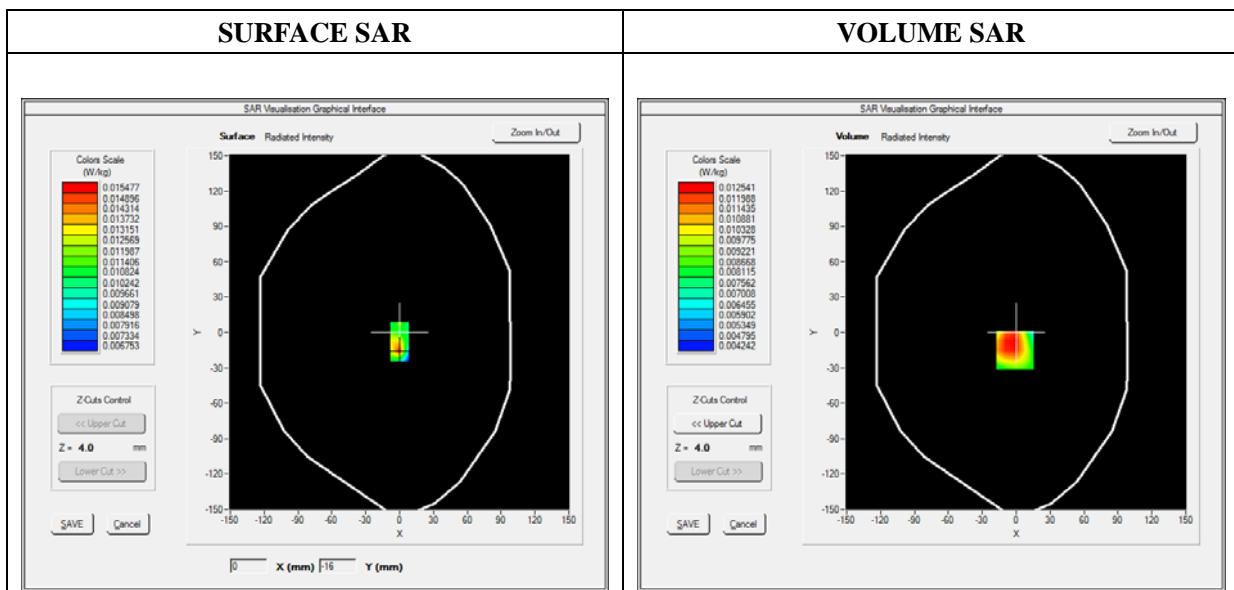
E-field Probe: SSE5 - SN 09/13 EP168; ConvF: 5.80; Calibrated: 05/22/2019

A. Experimental conditions

Area Scan	dx=8mm dy=8mm
Zoom Scan	dx=8mm dy=8mm dz=5mm
Phantom	Flat Plane
Device Position	Back
Band	WiFi_802.11n
Channels	High
Signal	Duty Cycle 1:1

B. SAR Measurement Results

Frequency (MHz)	2462.000000
Relative Permittivity (real part)	52.010212
Conductivity (S/m)	1.910255
Power Variation (%)	2.492743
Ambient Temperature	21.1
Liquid Temperature	21.2

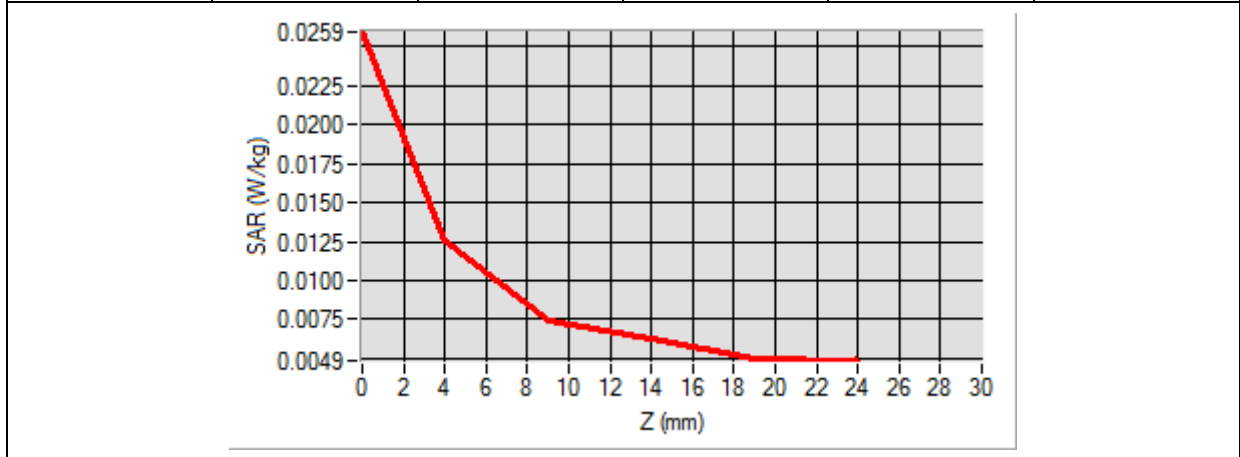


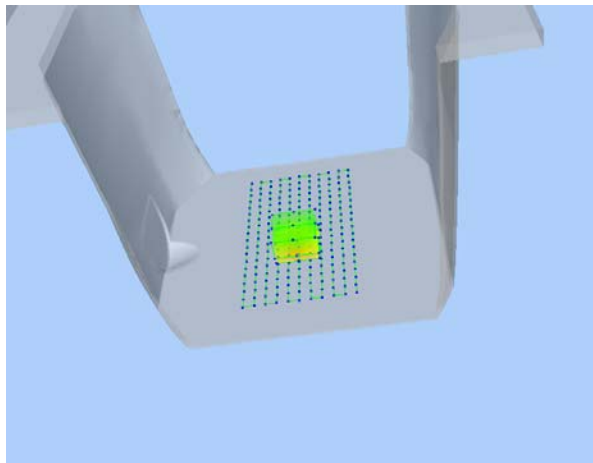

Maximum location: X=-1.00, Y=-15.00

SAR Peak: 0.02 W/kg

SAR 10g (W/Kg)	0.008439
SAR 1g (W/Kg)	0.012267

Z (mm)	0.00	4.00	9.00	14.00	19.00
SAR (W/Kg)	0.0259	0.0125	0.0074	0.0062	0.0050



3D screen shot	Hot spot position
	

MEASUREMENT 6

Type: Phone measurement (Complete)

Date of measurement: 07/19/2019

Measurement duration: 12 minutes 3 seconds

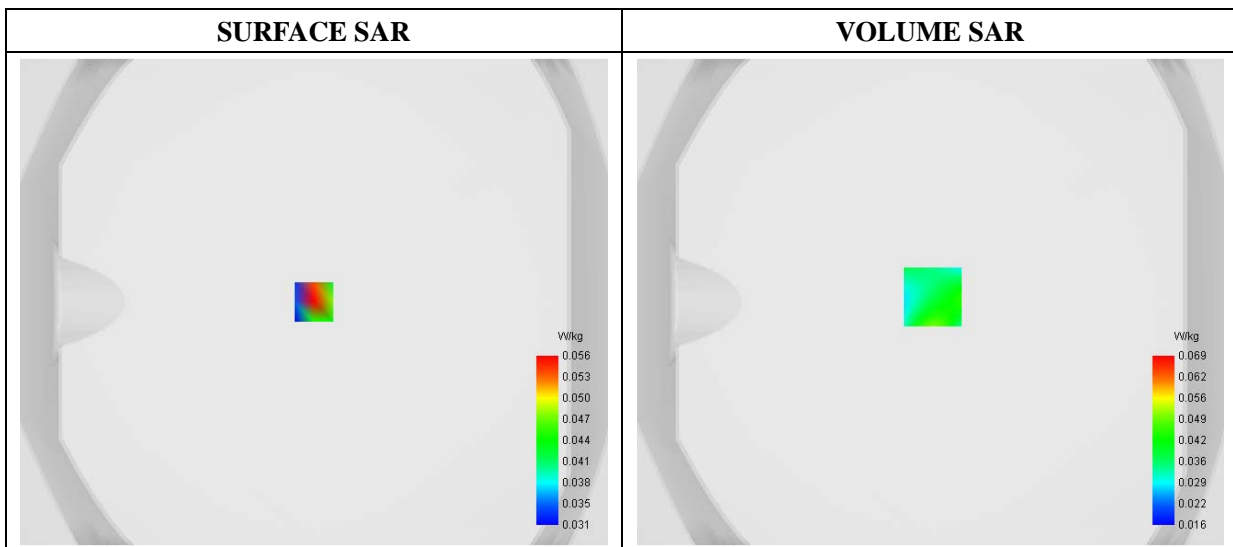
E-field Probe: SSE2 - SN 08/16 EPGO298; ConvF: 2.30; Calibrated: 09/10/2018

A. Experimental conditions

Area Scan	dx=8mm dy=8mm
Zoom Scan	dx=4mm dy=4mm dz=2mm
Phantom	Flat Plane
Device Position	Top
Band	WiFi(5.3G)_802.11ac_80
Channels	Middle
Signal	Duty Cycle: 1:1

B. SAR Measurement Results

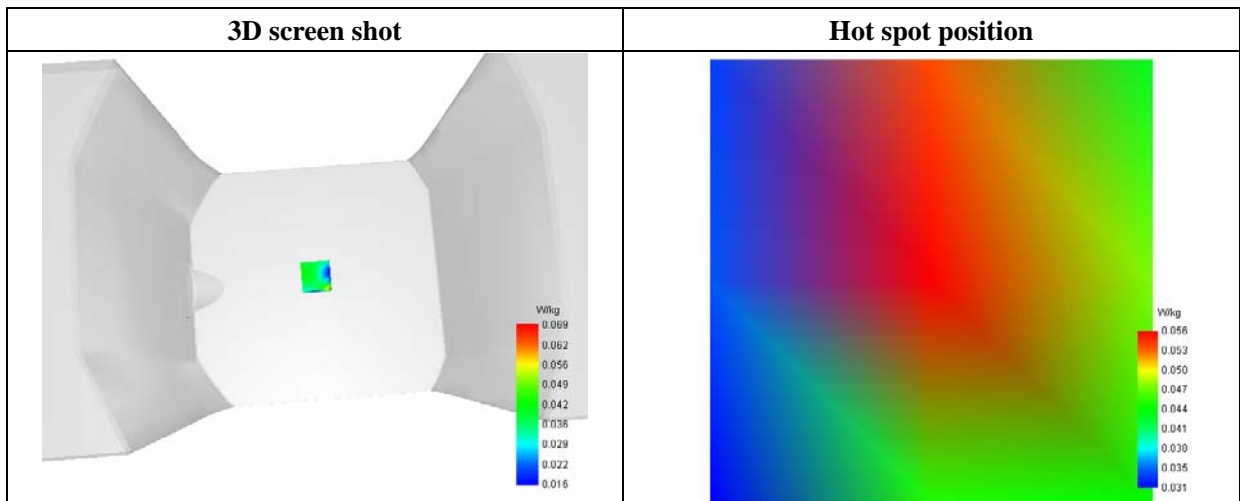
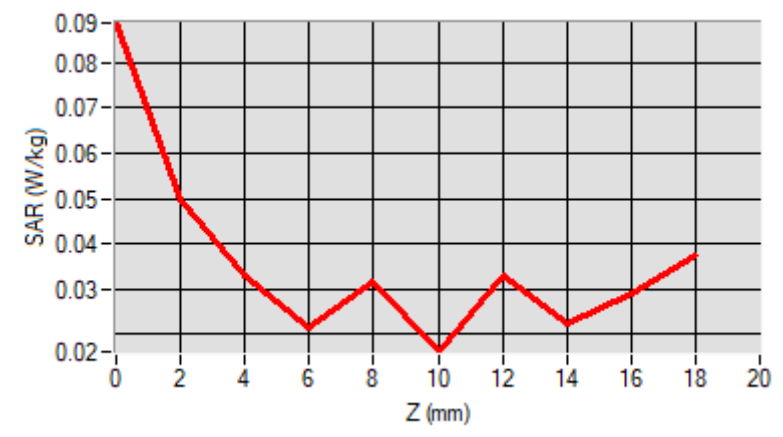
Frequency (MHz)	5290.000000
Relative Permittivity (real part)	48.502911
Conductivity (S/m)	5.261483
Power Variation (%)	0.848378
Ambient Temperature	21.1
Liquid Temperature	21.2



Maximum location: X=1.00, Y=2.00

SAR 10g (W/Kg)	0.038571
SAR 1g (W/Kg)	0.047605

Z (mm)	0.00	2.00	4.00	6.00	8.00	10.00	12.00	14.00	16.00	18.00
SAR (W/Kg)	0.0888	0.0498	0.0330	0.0212	0.0318	0.0162	0.0328	0.0224	0.0290	0.0290



MEASUREMENT 7

Type: Phone measurement (Complete)

Date of measurement: 07/19/2019

Measurement duration: 12 minutes 3 seconds

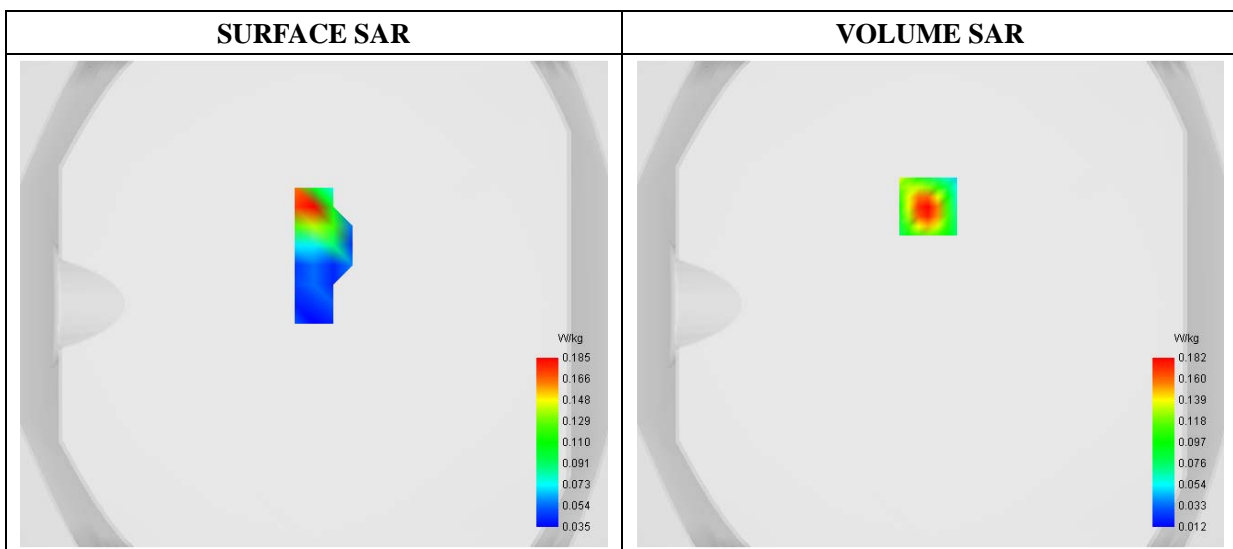
E-field Probe: SSE2 - SN 08/16 EPGO298; ConvF: 2.44; Calibrated: 09/10/2018

A. Experimental conditions

Area Scan	dx=8mm dy=8mm
Zoom Scan	dx=4mm dy=4mm dz=2mm
Phantom	Flat Plane
Device Position	Back
Band	WiFi(5.6G)_802.11n_40
Channels	High
Signal	Duty Cycle: 1:1

B. SAR Measurement Results

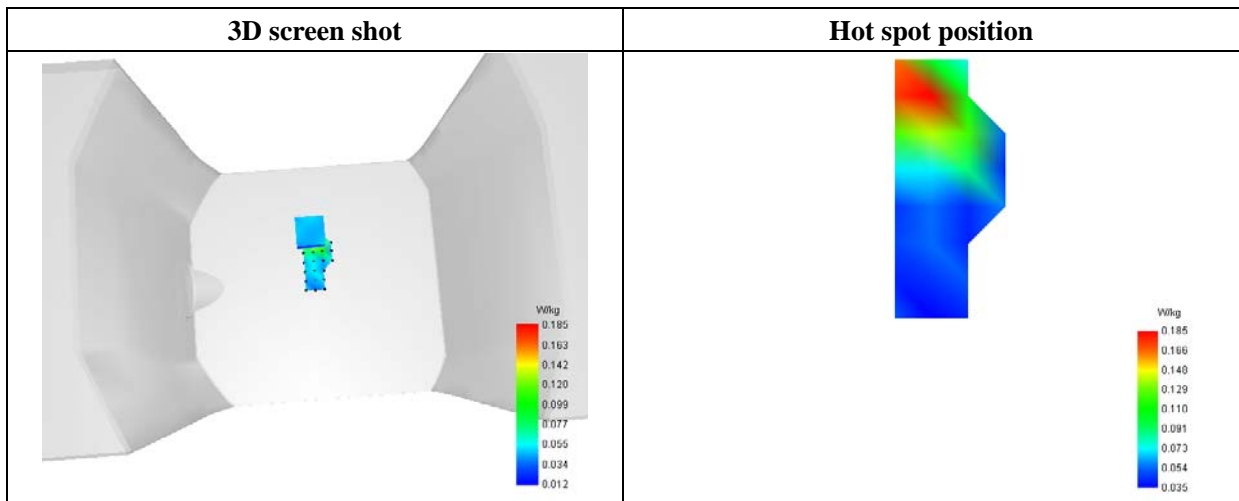
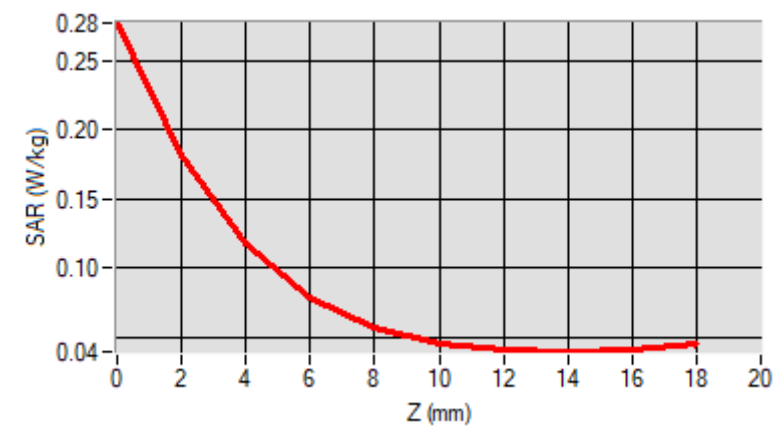
Frequency (MHz)	5670.000000
Relative Permittivity (real part)	48.302143
Conductivity (S/m)	5.521688
Power Variation (%)	1.083921
Ambient Temperature	21.1
Liquid Temperature	21.2



Maximum location: X=-1.00, Y=40.00

SAR 10g (W/Kg)	0.068610
SAR 1g (W/Kg)	0.123970

Z (mm)	0.00	2.00	4.00	6.00	8.00	10.00	12.00	14.00	16.00	18.00
SAR (W/Kg)	0.2772	0.1817	0.1185	0.0792	0.0570	0.0455	0.0405	0.0398	0.0418	0.0418



MEASUREMENT 9

Type: Phone measurement (Complete)

Date of measurement: 07/19/2019

Measurement duration: 12 minutes 3 seconds

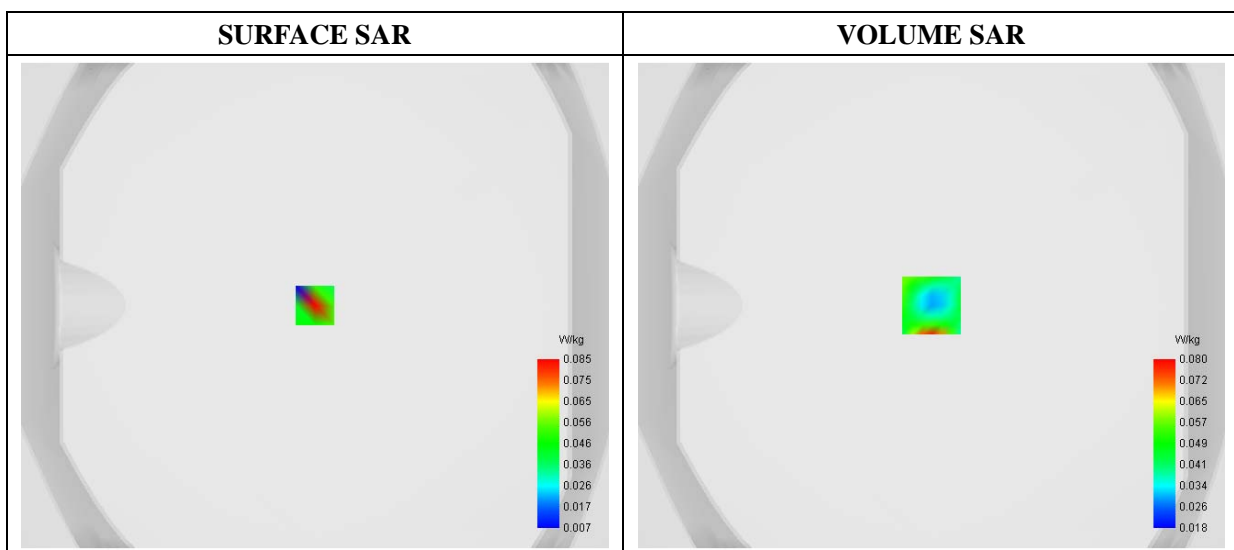
E-field Probe: SSE2 - SN 08/16 EPGO298; ConvF: 2.50; Calibrated: 09/10/2018

A. Experimental conditions

Area Scan	dx=8mm dy=8mm
Zoom Scan	dx=4mm dy=4mm dz=2mm
Phantom	Flat Plane
Device Position	Back
Band	WiFi(5.8G)_802.11n_40
Channels	Low
Signal	Duty Cycle: 1:1

B. SAR Measurement Results

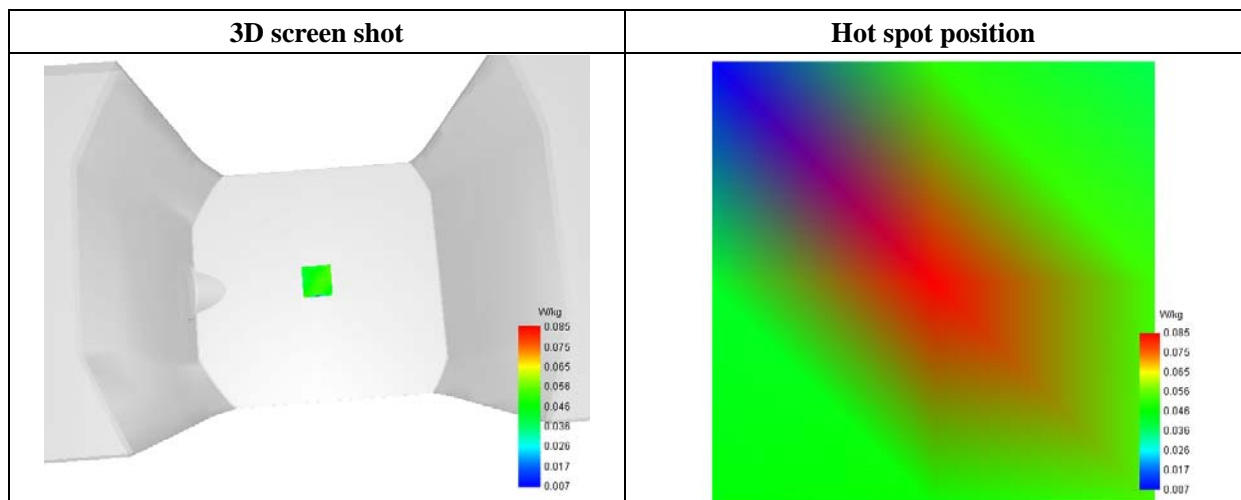
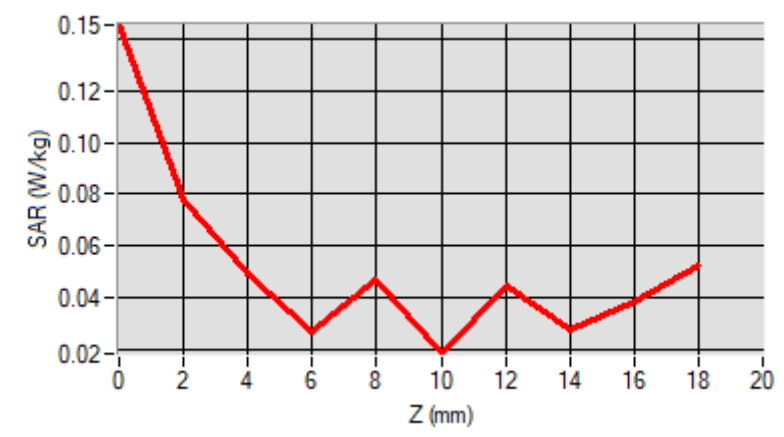
Frequency (MHz)	5755.000000
Relative Permittivity (real part)	48.101939
Conductivity (S/m)	5.761487
Power Variation (%)	1.155771
Ambient Temperature	21.1
Liquid Temperature	21.2



Maximum location: X=0.00, Y=0.00

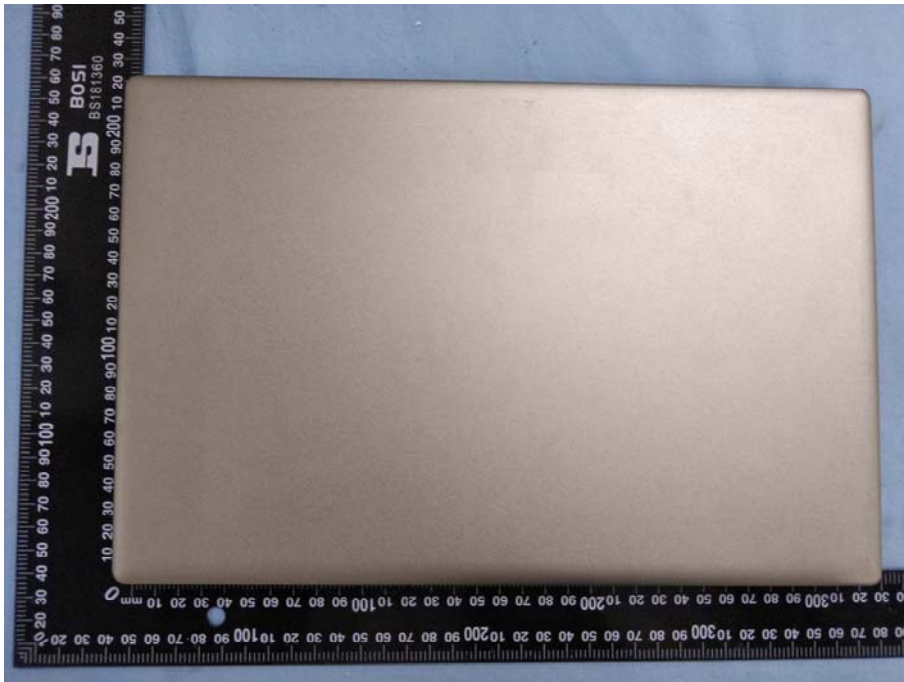
SAR 10g (W/Kg)	0.054860
SAR 1g (W/Kg)	0.061123

Z (mm)	0.00	2.00	4.00	6.00	8.00	10.00	12.00	14.00	16.00	18.00
SAR (W/Kg)	0.1453	0.0780	0.0491	0.0270	0.0466	0.0183	0.0446	0.0277	0.0382	0.0382

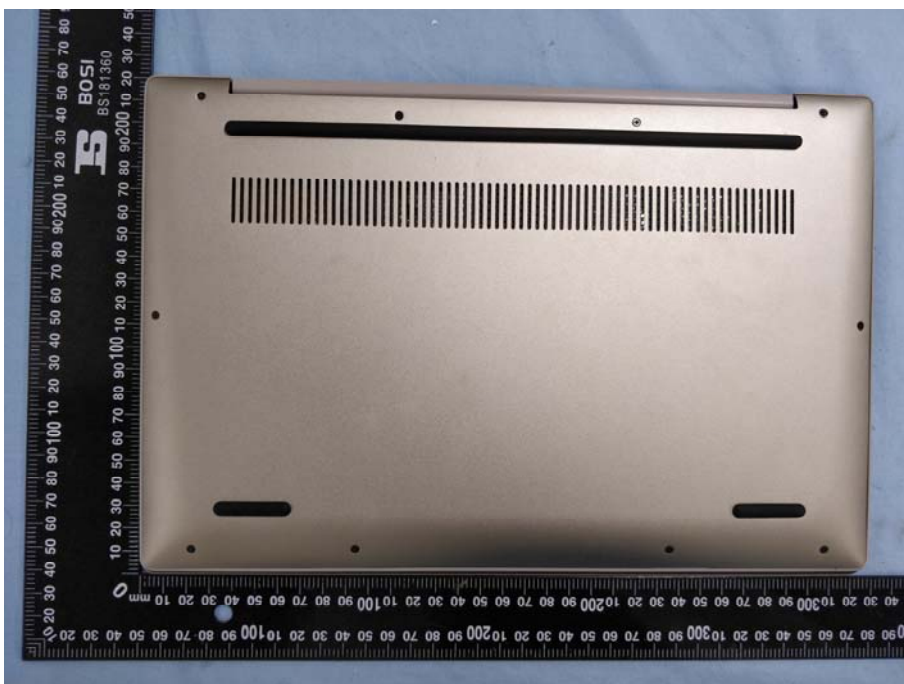


Annex C. EUT Photos

EUT View_1



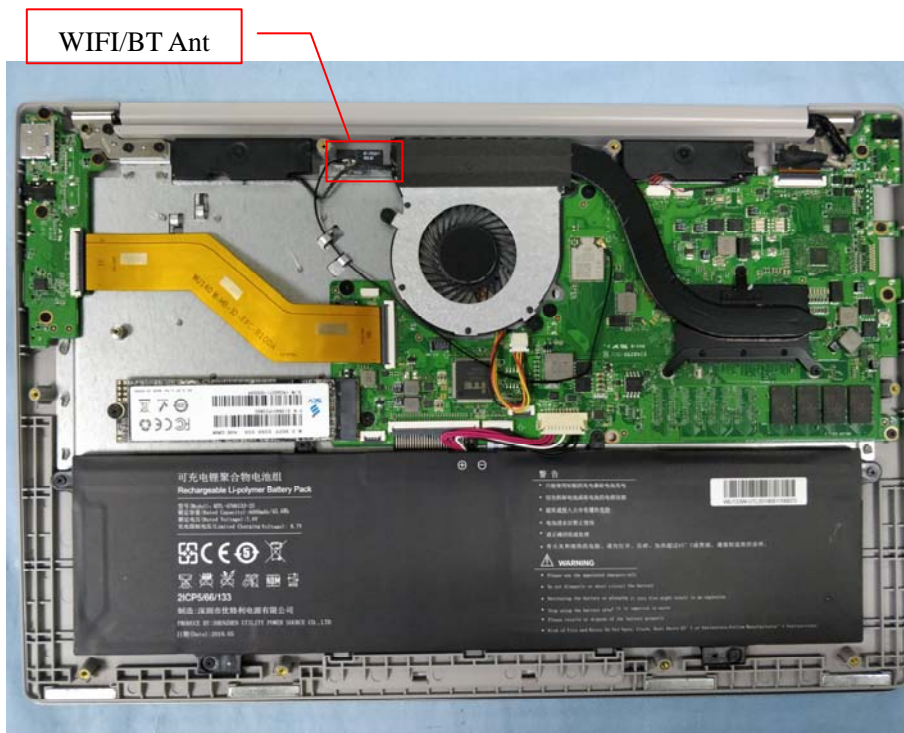
EUT View_2



EUT View_3



Antenna View



Annex D. Test Setup Photos

Body mode Exposure Conditions

Body Back



Body Top



Annex E. Calibration Certificate

Please refer to the exhibit for the calibration certificate

***** END OF REPORT *****