



Byteflies



We're here for you!

Learn about new features and get help when you need it:

Website: <https://www.byteflies.com>

Online IFU: <https://www.byteflies.com/ifu>

Email support: support@byteflies.com

Phone support: +32 (0)3 294 74 99

EU office:

Borsbeeksebrug 22, 6th floor
2600 Antwerp
Belgium

US office:

530 7th Avenue - Suite 902
New York, NY 10018
USA



Meet Your New Byteflies Kit

Your Byteflies Kit is a versatile and modular system for acquisition of physiologic and behavioral signals. It is intended to be operated by trained healthcare professionals who can prescribe it to users. This manual should get you up and running in no time. For the most detailed and up-to-date information, please visit our **online IFU** at:

<https://www.byteflies.com/ifu> 



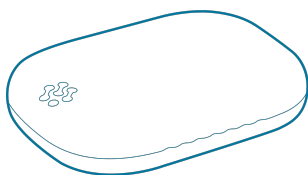
Indications for Use

The Byteflies Kit (Model 1) and its accessories are intended for prescription use in the home, healthcare facility, or clinical research environment to acquire, record, and transmit physiological and behavioral signals from users. It acquires, records and transmits electroencephalogram (EEG), electrocardiogram (ECG), heart rate (HR), respiratory rate (RR), electromyogram (EMG), and/or electrooculogram (EOG) signals, with optional accelerometer (ACC), gyroscope (GYR), and activity index (AI) signals. It only acquires these signals; no diagnostic claims are made about the user's condition.

What's Inside the Box

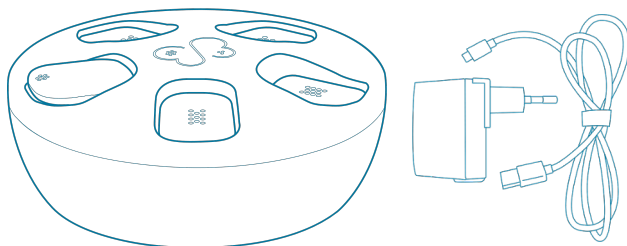
One or more Sensor Dots.

Record your vital signs!



A Docking Station.

Charge Sensor Dots and transfer your data to the cloud!




Byteflies Kit Accessories.

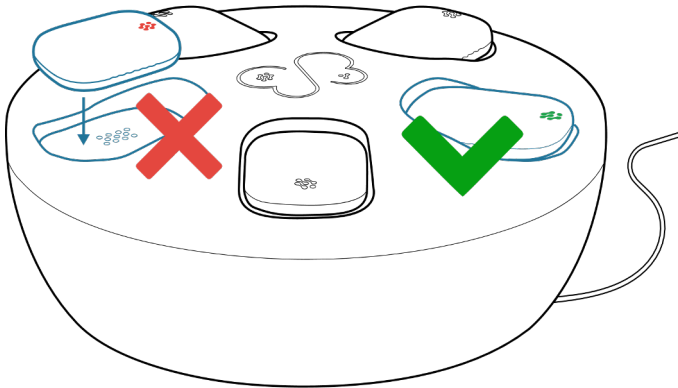
Connect a Sensor Dot to your body!


Various accessories are available that help connect a Sensor Dot to your body, depending on the location and the type of signal you want to record. More information is available in your accessory box and the online IFU.



Brief Instructions for Use

Step 1. Power on the Docking Station with the provided USB Power Supply and USB cable. Dock your Sensor Dot(s) in the Docking Station to charge them (green LED). If the Sensor Dot LED(s) do not turn green, consult the online IFU. 

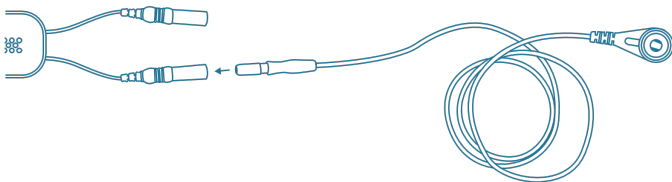


Step 2. Connect the Docking Station to the internet by connecting to the WiFi network "Byteflies Dock-xxxxxxxxxxxx" from a personal device and following the instructions on your device. More information and troubleshooting steps can be found in the online IFU. 

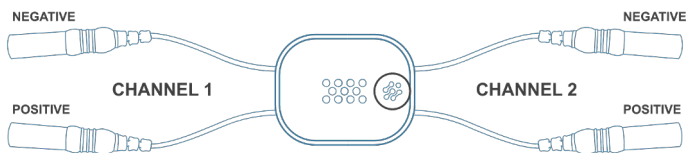


Step 3-6 depend on which type of Byteflies Kit Cradle accessory you are using. The steps below explain a potential configuration for a **4-Wire Cradle** accessory but this may not be applicable to your use case. Please refer to the specific instructions that came with your Byteflies Kit accessories and the online IFU.

Step 3. Take the **4-Wire Cradle** and attach compatible biopotential electrodes.



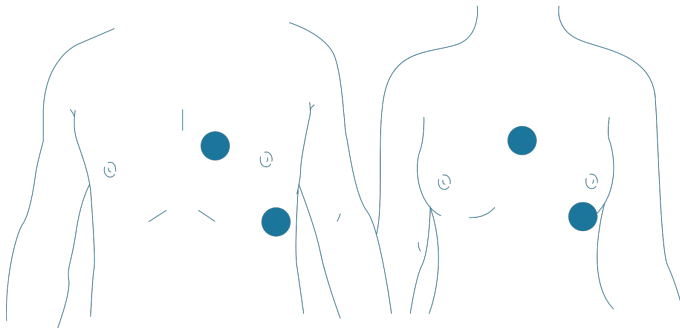
The leads on a 4-Wire Cradle are configured as follows:



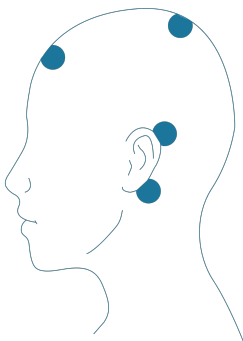
For full details on supported Byteflies Kit Cradles and other accessories, as well as supported biopotential electrode configurations, refer to the online IFU.

Step 4. Attach the biopotential electrodes to the user as indicated by the manufacturer and the signal you plan to record. Always consult the relevant instructions for use. The examples below are indicative only.

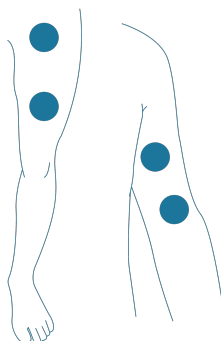
Electrocardiogram (ECG)




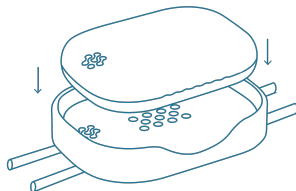
Electroencephalogram (EEG)




Electromyogram (EMG)



Step 5. Lift a charged **Sensor Dot** from the **Docking Station** and place it in the **4-Wire Cradle**. Its LED will blink green to indicate a recording has started. If not, your **Sensor Dot** may not have been factory configured. Please contact us or consult the **online IFU**. 



Step 6. You can record for up to 24 hours on a single charge. To complete a recording, lift the **Sensor Dot** out of the **4-Wire Cradle** and place it back in a free slot on the **Docking Station**. Its LED should turn orange to indicate data transfer has started.

Step 7. Once the LED of the Sensor Dot has turned green again, data transfer to the Docking Station has been completed. Please make sure your Docking Station is connected to the WiFi, showing a steady green light, in order to be able to access your recorded data via your Byteflies Cloud account. For more info on the LED of the Docking Station, please consult the online IFU. 



LED Notifications

Docked Sensor Dot



No light

The **Sensor Dot** is in sleep mode or the battery is dead.



Solid green

The **Sensor Dot** is charged and ready to start a recording.



Blinking green

The **Sensor Dot** is charging and ready to start a recording.




Solid orange

A recording is downloading to the **Docking Station**.



Yellow (blinking or solid)

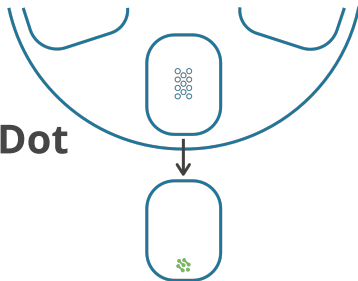
Warning (see online IFU). 



Solid red

Error. Stop using the **Sensor Dot** and contact support.

Undocked Sensor Dot



No light

The Sensor Dot is in sleep mode or the battery is dead.



Blinking green

The Sensor Dot is recording.




Blinking green (half speed)

The Sensor Dot is recording and the battery is running low.



Yellow (blinking or solid)


Warning (see online IFU). 

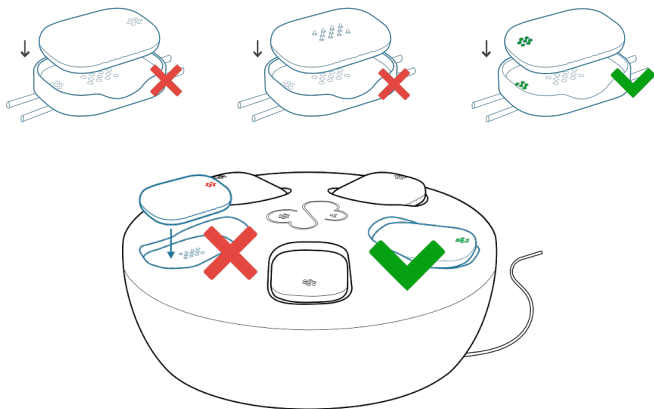


Solid red

Error. Stop using the Sensor Dot and contact support.

Important Use Instructions

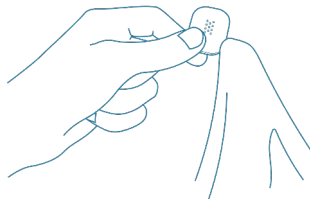
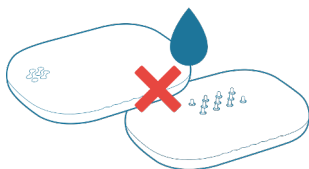
Always align the  icons before placing a Sensor Dot inside a Cradle or Docking Station slot.



Keep all Byteflies Kit components dry.



Keep your Byteflies Kit clean.









Getting-Started_Byteflies-Kit_Model1_Oct2021