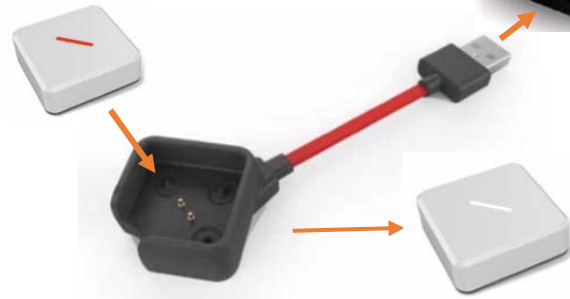
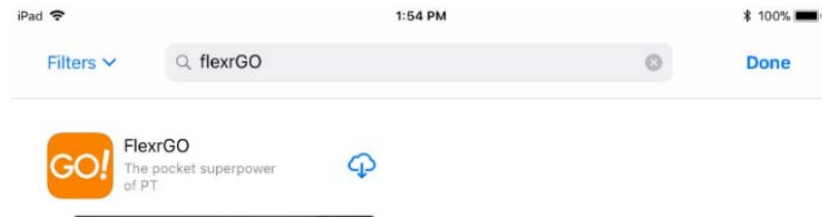


1 When received, charge first.



2 Download the App

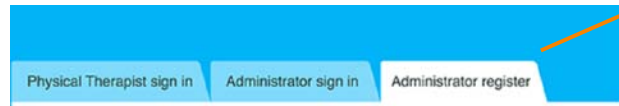
Search FlexrGO in the app store via your iPad!



Fully charged when the light turns white

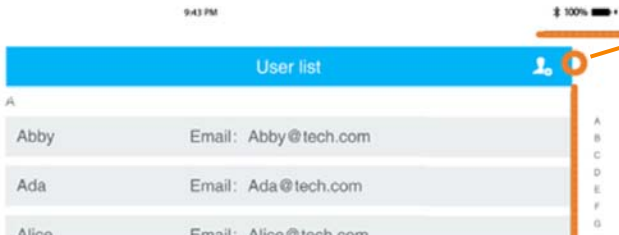
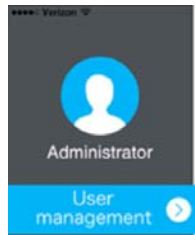
3 Sign up an Admin account.

Start the app and tap the Admin register tag



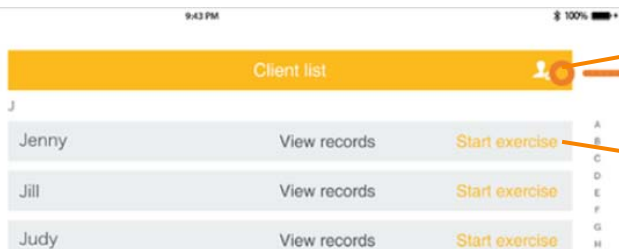
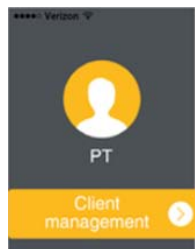
4 Add a physical therapist account

Sign in as admin  
Tap to add your first physical therapy account



5 Sign in as a physical therapist and Add a client

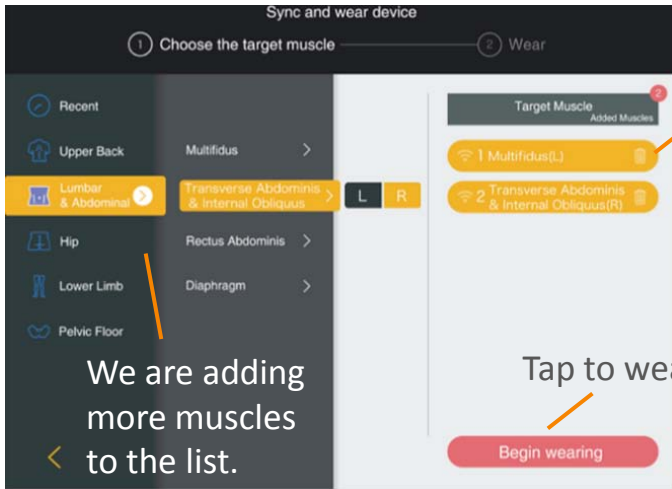
Sign in as a therapist  
Tap to add your first client



6 Start a new exercise

Tap to start a exercise session for your client

## 7 Select target muscles

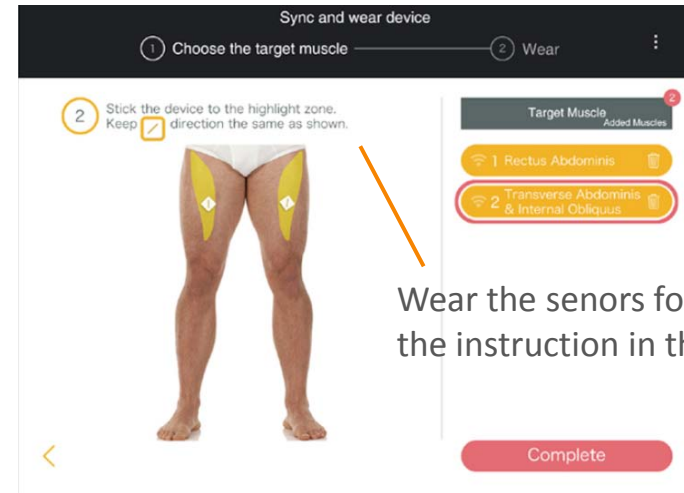


Tap the trash bin to delete and turn off the sensor

Tap to wear sensors

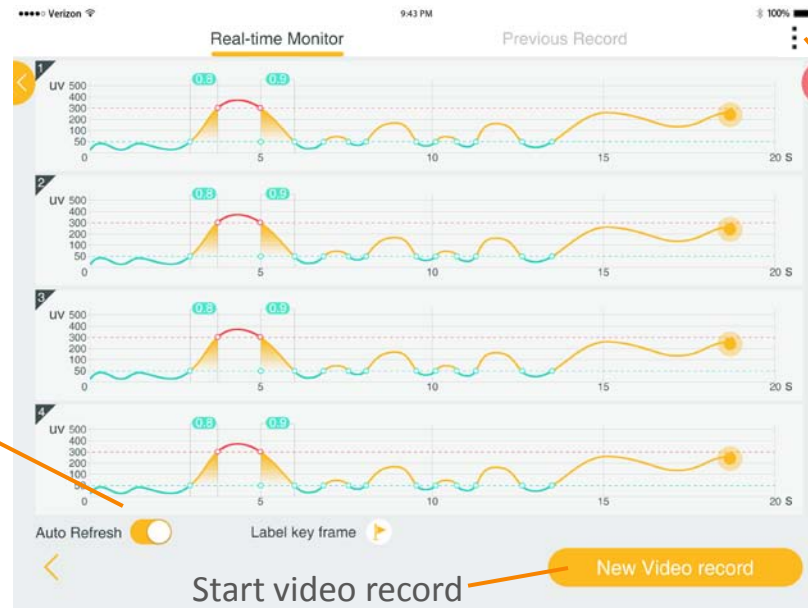
We are adding more muscles to the list.

## 8 Wear sensors



Wear the sensors following the instruction in the app.

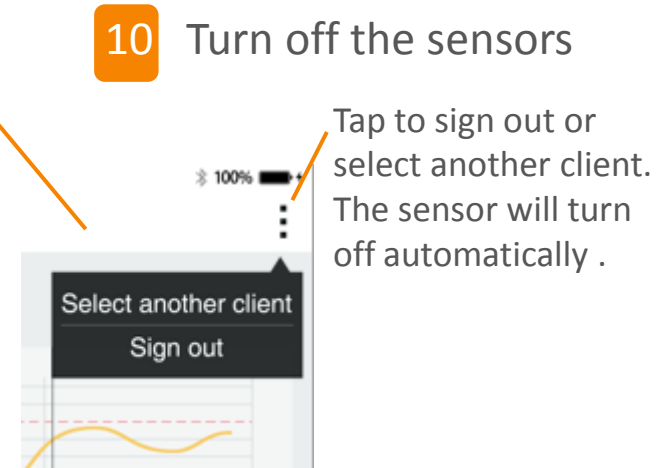
## 9 Enjoy the app



Pause the auto refresh

Start video record

## 10 Turn off the sensors



Tap to sign out or select another client. The sensor will turn off automatically.

**FCC Caution:**

This device complies with part 15 of the FCC Rules. Operation is subject to the following two conditions: (1) This device may not cause harmful interference, and (2) this device must accept any interference received, including interference that may cause undesired operation.

Any Changes or modifications not expressly approved by the party responsible for compliance could void the user's authority to operate the equipment.

**Note:** This equipment has been tested and found to comply with the limits for a Class B digital device, pursuant to part 15 of the FCC Rules. These limits are designed to provide reasonable protection against harmful interference in a residential installation. This equipment generates uses and can radiate radio frequency energy and, if not installed and used in accordance with the instructions, may cause harmful interference to radio communications. However, there is no guarantee that interference will not occur in a particular installation. If this equipment does cause harmful interference to radio or television reception, which can be determined by turning the equipment off and on, the user is encouraged to try to correct the interference by one or more of the following measures:

- Reorient or relocate the receiving antenna.
- Increase the separation between the equipment and receiver.
- Connect the equipment into an outlet on a circuit different from that to which the receiver is connected.
- Consult the dealer or an experienced radio/TV technician for help.