

FCC TEST REPORT

For

VKI Technologies

18.5 inch Industrial panel PC

Test Model: PPC-4218-VKI

List Model No.: /

Prepared for : VKI Technologies
Address : 3200,2e Rue, St-Hubert QC J3Y_8Y7, Canada

Prepared by : Shenzhen LCS Compliance Testing Laboratory Ltd.
Address : 1/F., Xingyuan Industrial Park, Tongda Road, Bao'an Avenue, Bao'an District, Shenzhen, Guangdong, China

Tel : (+86)755-82591330
Fax : (+86)755-82591332
Web : www.LCS-cert.com
Mail : webmaster@LCS-cert.com

Date of receipt of test sample : May 10, 2018
Number of tested samples : 2
Serial number : Prototype
Date of Test : May 10, 2018~May 25, 2018
Date of Report : May 25, 2018

**FCC TEST REPORT
FCC CFR 47 PART 15 C(15.247)**

Report Reference No. : **LCS180510003AEA**

Date of Issue : May 25, 2018

Testing Laboratory Name : **Shenzhen LCS Compliance Testing Laboratory Ltd.**

Address : 1/F., Xingyuan Industrial Park, Tongda Road, Bao'an Avenue,
Bao'an District, Shenzhen, Guangdong, China

Testing Location/ Procedure : Full application of Harmonised standards
Partial application of Harmonised standards
Other standard testing method

Applicant's Name : **VKI Technologies**

Address : 3200,2e Rue, St-Hubert QC J3Y_8Y7, Canada

Test Specification

Standard..... : FCC CFR 47 PART 15 C(15.247)

Test Report Form No...... : LCSEMC-1.0

TRF Originator : Shenzhen LCS Compliance Testing Laboratory Ltd.

Master TRF : Dated 2011-03

Shenzhen LCS Compliance Testing Laboratory Ltd. All rights reserved.

This publication may be reproduced in whole or in part for non-commercial purposes as long as the Shenzhen LCS Compliance Testing Laboratory Ltd. is acknowledged as copyright owner and source of the material. Shenzhen LCS Compliance Testing Laboratory Ltd. takes no responsibility for and will not assume liability for damages resulting from the reader's interpretation of the reproduced material due to its placement and context.

EUT Description. : **18.5 inch Industrial panel PC**

Trade Mark..... : N/A

Test Model : PPC-4218-VKI

Ratings : DC 12V/5A by power adapter

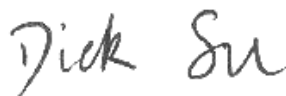
Result : **Positive**

Compiled by:



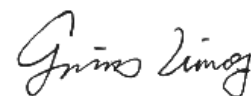
Calvin Weng/Administrators

Supervised by:



Dick Su/ Technique principal

Approved by:



Gavin Liang/ Manager

FCC -- TEST REPORT

| | |
|---|--------------------------------------|
| Test Report No. : LCS180510003AEA | <u>May 25, 2018</u> Date of issue |
|---|--------------------------------------|

| |
|---|
| EUT..... : 18.5 inch Industrial panel PC Test Model..... : PPC-4218-VKI |
| Applicant..... : VKI Technologies Address..... : 3200,2e Rue, St-Hubert QC J3Y_8Y7, Canada Telephone..... : / Fax..... : / |
| Manufacturer..... : Habey USA Address..... : 21015 Commerce Point Drive Walnut, CA 91789, USA Telephone..... : / Fax..... : / |
| Factory..... : Habey USA Address..... : 21015 Commerce Point Drive Walnut, CA 91789, USA Telephone..... : / Fax..... : / |

| | |
|--------------------|-----------------|
| Test Result | Positive |
|--------------------|-----------------|

The test report merely corresponds to the test sample.

It is not permitted to copy extracts of these test result without the written permission of the test laboratory.

Revision History

| Revision | Issue Date | Revisions | Revised By |
|----------|--------------|---------------|-------------|
| 000 | May 25, 2018 | Initial Issue | Gavin Liang |
| | | | |
| | | | |

TABLE OF CONTENTS

| Description | Page |
|---|-----------|
| 1. GENERAL INFORMATION | 6 |
| 1.1. DESCRIPTION OF DEVICE (EUT) | 6 |
| 1.2. HOST SYSTEM CONFIGURATION LIST AND DETAILS | 6 |
| 1.3. EXTERNAL I/O CABLE | 7 |
| 1.4. DESCRIPTION OF TEST FACILITY | 7 |
| 1.5. STATEMENT OF THE MEASUREMENT UNCERTAINTY | 7 |
| 1.6. MEASUREMENT UNCERTAINTY | 7 |
| 1.7. DESCRIPTION OF TEST MODES | 8 |
| 2. TEST METHODOLOGY | 9 |
| 2.1. EUT CONFIGURATION | 9 |
| 2.2. EUT EXERCISE | 9 |
| 2.3. GENERAL TEST PROCEDURES | 9 |
| 3. SYSTEM TEST CONFIGURATION | 10 |
| 3.1. JUSTIFICATION | 10 |
| 3.2. EUT EXERCISE SOFTWARE | 10 |
| 3.3. SPECIAL ACCESSORIES | 10 |
| 3.4. BLOCK DIAGRAM/SCHEMATICS | 10 |
| 3.5. EQUIPMENT MODIFICATIONS | 10 |
| 3.6. TEST SETUP | 10 |
| 4. SUMMARY OF TEST RESULTS | 11 |
| 5. TEST RESULT | 12 |
| 5.1. ON TIME AND DUTY CYCLE | 12 |
| 5.2. MAXIMUM CONDUCTED OUTPUT POWER MEASUREMENT | 13 |
| 5.3. POWER SPECTRAL DENSITY MEASUREMENT | 15 |
| 5.4. 6 DB SPECTRUM BANDWIDTH MEASUREMENT | 17 |
| 5.5. RADIATED EMISSIONS MEASUREMENT | 18 |
| 5.6. CONDUCTED SPURIOUS EMISSIONS AND BAND EDGES TEST | 29 |
| 5.7. AC POWER LINE CONDUCTED EMISSIONS | 30 |
| 5.8. BAND-EDGE MEASUREMENTS FOR RADIATED EMISSIONS | 32 |
| 5.9. ANTENNA REQUIREMENTS | 34 |
| 6. LIST OF MEASURING EQUIPMENTS | 36 |
| 7. TEST SETUP PHOTOGRAPHS OF EUT | 37 |
| 8. EXTERIOR PHOTOGRAPHS OF THE EUT | 37 |
| 9. INTERIOR PHOTOGRAPHS OF THE EUT | 37 |

1.3. External I/O Cable

| I/O Port Description | Quantity | Cable |
|----------------------|----------|-------|
| RJ45 Port | 1 | N/A |
| USB Port | 3 | N/A |
| TF card Port | 1 | N/A |
| DC in Port | 1 | N/A |

1.4. Description of Test Facility

FCC Registration Number. is 254912.
 Industry Canada Registration Number. is 9642A-1.
 ESMD Registration Number. is ARCB0108.
 UL Registration Number. is 100571-492.
 TUV SUD Registration Number. is SCN1081.
 TUV RH Registration Number. is UA 50296516-001
 NVLAP Registration Code is 600167-0

The 3m-Semi anechoic test site fulfils CISPR 16-1-4 according to ANSI C63.4:2014 and CISPR 16-1-4:2010 SVSWR requirement for radiated emission above 1GHz.

1.5. Statement of the Measurement Uncertainty

The data and results referenced in this document are true and accurate. The reader is cautioned that there may be errors within the calibration limits of the equipment and facilities. The measurement uncertainty was calculated for all measurements listed in this test report acc. To CISPR 16 – 4 “Specification for radio disturbance and immunity measuring apparatus and methods – Part 4: Uncertainty in EMC Measurements” and is documented in the LCS quality system acc. To DIN EN ISO/IEC 17025. Furthermore, component and process variability of devices similar to that tested may result in additional deviation. The manufacturer has the sole responsibility of continued compliance of the device.

1.6. Measurement Uncertainty

| Test Item | Frequency Range | Uncertainty | Note |
|------------------------|-----------------|-------------|------|
| Radiation Uncertainty | 9KHz~30MHz | ±3.10dB | (1) |
| | 30MHz~200MHz | ±2.96dB | (1) |
| | 200MHz~1000MHz | ±3.10dB | (1) |
| | 1GHz~26.5GHz | ±3.80dB | (1) |
| | 26.5GHz~40GHz | ±3.90dB | (1) |
| Conduction Uncertainty | 150kHz~30MHz | ±1.63dB | (1) |
| Power disturbance | 30MHz~300MHz | ±1.60dB | (1) |

(1). This uncertainty represents an expanded uncertainty expressed at approximately the 95% confidence level using a coverage factor of k=2.

1.7. Description of Test Modes

The EUT has been tested under operating condition.

This test was performed with EUT in X, Y, Z position and the worst case was found when EUT in Y position.

AC conducted emission pre-test at both at AC 120V/60Hz and AC 240V/50Hz modes, recorded worst case;

AC conducted emission pre-test at both at power adapter and power from PC modes, recorded worst case;

Worst-case mode and channel used for 150 KHz-30 MHz power line conducted emissions was the mode and channel with the highest output power, which was determined to be IEEE 802.11b mode (High Channel).

Worst-case mode and channel used for 9 KHz-1000 MHz radiated emissions was the mode and channel with the highest output power, that was determined to be IEEE 802.11b mode(High Channel).

Worst-Case data rates were utilized from preliminary testing of the Chipset, worst-case data rates used during the testing are as follows:

- IEEE 802.11b Mode: 1 Mbps, DSSS.
- IEEE 802.11g Mode: 6 Mbps, OFDM.
- IEEE 802.11n Mode HT20: MCS0, OFDM.
- IEEE 802.11n Mode HT40: MCS0, OFDM.

Channel List & Frequency

IEEE 802.11b/g/n HT20

| Frequency Band | Channel No. | Frequency(MHz) | Channel No. | Frequency(MHz) |
|----------------|-------------|----------------|-------------|----------------|
| 2412~2462MHz | 1 | 2412 | 7 | 2442 |
| | 2 | 2417 | 8 | 2447 |
| | 3 | 2422 | 9 | 2452 |
| | 4 | 2427 | 10 | 2457 |
| | 5 | 2432 | 11 | 2462 |
| | 6 | 2437 | --- | --- |

IEEE 802.11n HT40

| Frequency Band | Channel No. | Frequency(MHz) | Channel No. | Frequency(MHz) |
|----------------|-------------|----------------|-------------|----------------|
| 2422~2452MHz | --- | --- | 7 | 2442 |
| | --- | --- | 8 | 2447 |
| | 3 | 2422 | 9 | 2452 |
| | 4 | 2427 | 10 | --- |
| | 5 | 2432 | 11 | --- |
| | 6 | 2437 | --- | --- |

2. TEST METHODOLOGY

All measurements contained in this report were conducted with ANSI C63.10-2013, American National Standard of Procedures for Compliance Testing of Unlicensed Wireless Devices.

The radiated testing was performed at an antenna-to-EUT distance of 3 meters. All radiated and conducted emissions measurement was performed at Shenzhen LCS Compliance Testing Laboratory Ltd.

2.1. EUT Configuration

The EUT configuration for testing is installed on RF field strength measurement to meet the Commissions requirement and operating in a manner that intends to maximize its emission characteristics in a continuous normal application.

2.2. EUT Exercise

The EUT was operated in the engineering mode to fix the TX frequency that was for the purpose of the measurements.

According to FCC's request, Test Procedure KDB558074 D01 DTS Meas. Guidance v04 is required to be used for this kind of FCC 15.247 digital modulation device.

According to its specifications, the EUT must comply with the requirements of the Section 15.203, 15.205, 15.207, 15.209 and 15.247 under the FCC Rules Part 15 Subpart C.

2.3. General Test Procedures

2.3.1 Conducted Emissions

The EUT is placed on the turntable, which is 0.8 m above ground plane. According to the requirements in Section 6.2.1 of ANSI C63.10-2013 Conducted emissions from the EUT measured in the frequency range between 0.15 MHz and 30MHz using Quasi-peak and average detector modes.

2.3.2 Radiated Emissions

The EUT is placed on a turn table, which is 0.8 m above ground plane. The turntable shall rotate 360 degrees to determine the position of maximum emission level. EUT is set 3m away from the receiving antenna, which varied from 1m to 4m to find out the highest emission. And also, each emission was to be maximized by changing the polarization of receiving antenna both horizontal and vertical. In order to find out the maximum emissions, exploratory radiated emission measurements were made according to the requirements in Section 6.3 of ANSI C63.10-2013.

3. SYSTEM TEST CONFIGURATION

3.1. Justification

The system was configured for testing in a continuous transmits condition.

3.2. EUT Exercise Software

The sample will be controlled by MPTool to enter RF test mode to control sample change channel, modulation and so on.

3.3. Special Accessories

| No. | Equipment | Manufacturer | Model No. | Serial No. | Length | shielded/ unshielded | Notes |
|-----|-----------|--------------|-----------|------------|--------|-------------------------|-------|
| / | / | / | / | / | / | / | / |

3.4. Block Diagram/Schematics

Please refer to the related document

3.5. Equipment Modifications

Shenzhen LCS Compliance Testing Laboratory Ltd. has not done any modification on the EUT.

3.6. Test Setup

Please refer to the test setup photo.

4. SUMMARY OF TEST RESULTS

| Applied Standard: FCC Part 15 Subpart C | | | |
|---|--------------------------------|-----------|--------------------------------|
| FCC Rules | Description of Test | Result | Remark |
| / | On Time and Duty Cycle | / | Only reported; Appendix A.1 |
| §15.247(b) | Maximum Conducted Output Power | Compliant | Appendix A.2 |
| §15.247(e) | Power Spectral Density | Compliant | Appendix A.3 |
| §15.247(a)(2) | 6dB Bandwidth | Compliant | Appendix A.4 |
| §15.209, §15.247(d) | Conducted Spurious Emissions | Compliant | Appendix A.5 Appendix A.6 |
| §15.209, §15.247(d) | Radiated Spurious Emissions | Compliant | Note 1 |
| §15.205 | Emissions at Restricted Band | Compliant | Appendix A.7 |
| §15.207(a) | Conducted Emissions | Compliant | Note 1 |
| §15.203 | Antenna Requirements | Compliant | Note 1 |
| §15.247(i)§2.1091 | Maximum Permissible Exposure | Compliant | Note 2 |

Remark:

1. Note 1 – Test results inside test report;
2. Note 2 – Test results in other test report (Maximum Permissible Exposure report);

5. TEST RESULT

5.1. On Time and Duty Cycle

5.1.1. Standard Applicable

None: for reporting purpose only.

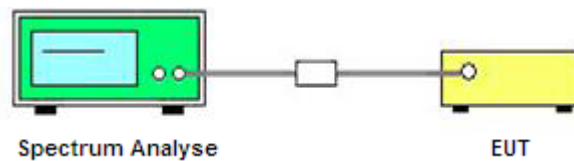
5.1.2. Measuring Instruments and Setting

Please refer to equipment's list in this report. The following table is the setting of the spectrum analyzer.

5.1.3. Test Procedures

1. Set the centre frequency of the spectrum analyzer to the transmitting frequency;
2. Set the span=0MHz, RBW=8MHz, VBW=50MHz, Sweep time=20.27ms;
3. Detector = peak;
4. Trace mode = Single hold.

5.1.4. Test Setup Layout



5.1.5. EUT Operation during Test

The EUT was programmed to be in continuously transmitting mode.

5.1.6. Test result

For reporting purpose only.

Please refer to Appendix A 2.4G WIFI Test Data Section A.1

5.2. Maximum Conducted Output Power Measurement

5.2.1. Standard Applicable

According to §15.247(b): For systems using digital modulation in the 2400-2483.5 MHz and 5725-5850 MHz band, the limit for maximum peak conducted output power is 30dBm. The limit has to be reduced by the amount in dB that the gain of the antenna exceeds 6dBi. In case of point-to-point operation, the limit has to be reduced by 1dB for every 3dB that the directional gain of the antenna exceeds 6dBi.

Systems operating in the 5725-5850 MHz band that are used exclusively for fixed, point-to-point operations may employ transmitting antennas with directional gain greater than 6dBi without any corresponding reduction in transmitter peak output power.

5.2.2. Measuring Instruments and Setting

Please refer to equipment's list in this report. The following table is the setting of the power meter.

5.2.3. Test Procedures

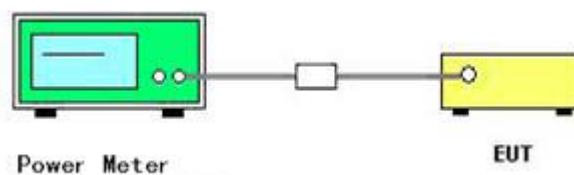
According to KDB558074 D01 DTS Measurement Guidance Section 9.1 Maximum peak conducted output power, 9.1.2 the maximum peak conducted output power may be measured using a broadband peak RF power meter. The power meter shall have a video bandwidth that is greater than or equal to the DTS bandwidth and shall utilize a fast-responding diode detector.

According to KDB558074 D01 DTS Measurement Guidance Section 9.2 Maximum average conducted output power, 9.2.3.1 Method AVGPM (Measurement using an RF average power meter)

(a) As an alternative to spectrum analyzer or EMI receiver measurements, measurements may be performed using a wideband RF power meter with a thermocouple detector or equivalent if all of the conditions listed below are satisfied.

- 1) The EUT is configured to transmit continuously, or to transmit with a constant duty factor.
 - 2) At all times when the EUT is transmitting, it shall be transmitting at its maximum power control level.
 - 3) The integration period of the power meter exceeds the repetition period of the transmitted signal by at least a factor of five.
- (b) If the transmitter does not transmit continuously, measure the duty cycle (x) of the transmitter output signal as described in Section 6.0.
- (c) Measure the average power of the transmitter. This measurement is an average over both the on and off periods of the transmitter.
- (d) Adjust the measurement in dBm by adding $10\log(1/x)$, where x is the duty cycle to the measurement result.

5.2.4. Test Setup Layout



5.2.5. EUT Operation during Test

The EUT was programmed to be in continuously transmitting mode.

5.2.6. Test Result of Maximum Conducted Output Power

PASS

Please refer to Appendix A 2.4G WIFI Test Data Section A.2

Remark:

- 1). Measured output power at difference data rate for each mode and recorded worst case for each mode.*
- 2). Test results including cable loss;*
- 3). Worst case data at 1Mbps at IEEE 802.11b; 6Mbps at IEEE 802.11g; 6.5Mbps at IEEE 802.11n HT20; 13Mbps at IEEE 802.11n HT40;*

5.3. Power Spectral Density Measurement

5.3.1. Standard Applicable

According to §15.247(e): For digitally modulated systems, the power spectral density conducted from the intentional radiator to the antenna shall not be greater than 8dBm in any 3 kHz band during any time interval of continuous transmission.

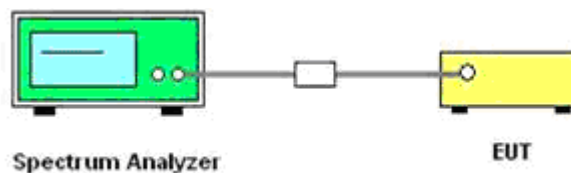
5.3.2. Measuring Instruments and Setting

Please refer to equipment's list in this report. The following table is the setting of Spectrum Analyzer.

5.3.3. Test Procedures

1. Use this procedure when the maximum peak conducted output power in the fundamental emission is used to demonstrate compliance.
2. The power was monitored at the coupler port with a Spectrum Analyzer. The power level was set to the maximum level.
3. Set the RBW = 30 kHz.
4. Set the VBW $\geq 3 \times$ RBW
5. Set the span to 1.5 times the DTS channel bandwidth.
6. Detector = peak.
7. Sweep time = auto couple.
8. Trace mode = max hold.
9. Allow trace to fully stabilize.
10. Use the peak marker function to determine the maximum power level.
11. If measured value exceeds limit, reduce RBW (no less than 3 kHz) and repeat.
12. The resulting peak PSD level shall not be great than 8dBm.

5.3.4. Test Setup Layout



5.3.5. EUT Operation during Test

The EUT was programmed to be in continuously transmitting mode.

5.3.6. Test Result of Power Spectral Density

PASS

Please refer to Appendix A 2.4G WIFI Test Data Section A.3

Remark:

- 1). Measured power spectrum density at difference data rate for each mode and recorded worst case for each mode.*
- 2). Test results including cable loss;*
- 3). Worst case data at 1Mbps at IEEE 802.11b; 6Mbps at IEEE 802.11g; 6.5Mbps at IEEE 802.11n HT20; 13.5Mbps at IEEE 802.11n HT40.*

5.4. 6 dB Spectrum Bandwidth Measurement

5.4.1. Standard Applicable

According to §15.247(a) (2): For digital modulation systems, the minimum 6 dB bandwidth shall be at least 500 kHz.

5.4.2. Measuring Instruments and Setting

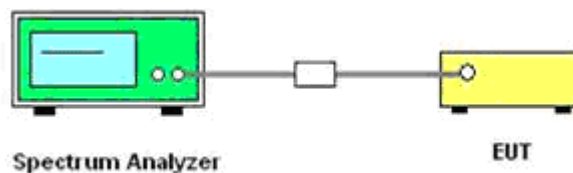
Please refer to equipment's list in this report. The following table is the setting of the Spectrum Analyzer.

| Spectrum Parameter | Setting |
|--------------------|----------|
| Attenuation | Auto |
| Span Frequency | > RBW |
| Detector | Peak |
| Trace | Max Hold |
| Sweep Time | 100ms |

5.4.3. Test Procedures

1. The transmitter output (antenna port) was connected to the spectrum analyzer in peak hold mode.
2. The resolution bandwidth and the video bandwidth were set according to KDB558074.
3. Measured the spectrum width with power higher than 6dB below carrier.

5.4.4. Test Setup Layout



5.4.5. EUT Operation during Test

The EUT was programmed to be in continuously transmitting mode.

5.4.6. Test Result of 6dB Spectrum Bandwidth

PASS

Please refer to Appendix A 2.4G WIFI Test Data Section A.4

Remark:

- 1). Measured 6dB bandwidth at difference data rate for each mode and recorded worst case for each mode.
- 2). Test results including cable loss;
- 3). Worst case data at 1Mbps at IEEE 802.11b; 6Mbps at IEEE 802.11g; 6.5Mbps at IEEE 802.11n HT20; 13.5Mbps at IEEE 802.11n HT40.

5.5. Radiated Emissions Measurement

5.5.1. Standard Applicable

15.205 (a) Except as shown in paragraph (d) of this section, only spurious emissions are permitted in any of the frequency bands listed below:

| MHz | MHz | MHz | GHz |
|-------------------|---------------------|---------------|-------------|
| 0.090-0.110 | 16.42-16.423 | 399.9-410 | 4.5-5.15 |
| \1\ 0.495-0.505 | 16.69475-16.69525 | 608-614 | 5.35-5.46 |
| 2.1735-2.1905 | 16.80425-16.80475 | 960-1240 | 7.25-7.75 |
| 4.125-4.128 | 25.5-25.67 | 1300-1427 | 8.025-8.5 |
| 4.17725-4.17775 | 37.5-38.25 | 1435-1626.5 | 9.0-9.2 |
| 4.20725-4.20775 | 73-74.6 | 1645.5-1646.5 | 9.3-9.5 |
| 6.215-6.218 | 74.8-75.2 | 1660-1710 | 10.6-12.7 |
| 6.26775-6.26825 | 108-121.94 | 1718.8-1722.2 | 13.25-13.4 |
| 6.31175-6.31225 | 123-138 | 2200-2300 | 14.47-14.5 |
| 8.291-8.294 | 149.9-150.05 | 2310-2390 | 15.35-16.2 |
| 8.362-8.366 | 156.52475-156.52525 | 2483.5-2500 | 17.7-21.4 |
| 8.37625-8.38675 | 156.7-156.9 | 2690-2900 | 22.01-23.12 |
| 8.41425-8.41475 | 162.0125-167.17 | 3260-3267 | 23.6-24.0 |
| 12.29-12.293. | 167.72-173.2 | 3332-3339 | 31.2-31.8 |
| 12.51975-12.52025 | 240-285 | 3345.8-3358 | 36.43-36.5 |
| 12.57675-12.57725 | 322-335.4 | 3600-4400 | (2) |
| 13.36-13.41 | | | |

\1\ Until February 1, 1999, this restricted band shall be 0.490-0.510 MHz.

\2\ Above 38.6

According to §15.247 (d): 20dBc in any 100 kHz bandwidth outside the operating frequency band. In case the emission fall within the restricted band specified on 15.205(a), then the 15.209(a) limit in the table below has to be followed.

| Frequencies (MHz) | Field Strength (microvolts/meter) | Measurement Distance (meters) |
|-------------------|-----------------------------------|-------------------------------|
| 0.009~0.490 | 2400/F(KHz) | 300 |
| 0.490~1.705 | 24000/F(KHz) | 30 |
| 1.705~30.0 | 30 | 30 |
| 30~88 | 100 | 3 |
| 88~216 | 150 | 3 |
| 216~960 | 200 | 3 |
| Above 960 | 500 | 3 |

5.5.2. Measuring Instruments and Setting

Please refer to equipment list in this report. The following table is the setting of spectrum analyzer and receiver.

| Spectrum Parameter | Setting |
|---|---|
| Attenuation | Auto |
| Start Frequency | 1000 MHz |
| Stop Frequency | 10 th carrier harmonic |
| RB / VB (Emission in restricted band) | 1MHz / 1MHz for Peak, 1 MHz / 1/B kHz for Average |
| RB / VB (Emission in non-restricted band) | 1MHz / 1MHz for Peak, 1 MHz / 1/B kHz for Average |

| Receiver Parameter | Setting |
|------------------------|--|
| Attenuation | Auto |
| Start ~ Stop Frequency | 9kHz~150kHz / RB/VB 200Hz/1KHz for QP/AVG |
| Start ~ Stop Frequency | 150kHz~30MHz / RB/VB 9kHz/30KHz for QP/AVG |
| Start ~ Stop Frequency | 30MHz~1000MHz / RB/VB 120kHz/1MHz for QP |

5.5.3. Test Procedures

1) Sequence of testing 9 kHz to 30 MHz

Setup:

--- The equipment was set up to simulate a typical usage like described in the user manual or described by manufacturer.

--- If the EUT is a tabletop system, a rotatable table with 0.8 m height is used.

--- If the EUT is a floor standing device, it is placed on the ground.

--- Auxiliary equipment and cables were positioned to simulate normal operation conditions.

--- The AC power port of the EUT (if available) is connected to a power outlet below the turntable.

--- The measurement distance is 3 meter.

--- The EUT was set into operation.

Premeasurement:

--- The turntable rotates from 0° to 315° using 45° steps.

--- The antenna height is 0.8 meter.

--- At each turntable position the analyzer sweeps with peak detection to find the maximum of all emissions

Final measurement:

--- Identified emissions during the premeasurement the software maximizes by rotating the turntable position (0° to 360°) and by rotating the elevation axes (0° to 360°).

--- The final measurement will be done in the position (turntable and elevation) causing the highest emissions with QPK detector.

--- The final levels, frequency, measuring time, bandwidth, turntable position, correction factor, margin to the limit and limit will be recorded. Also a plot with the graph of the premeasurement and the limit will be stored.

2) Sequence of testing 30 MHz to 1 GHz

Setup:

- The equipment was set up to simulate a typical usage like described in the user manual or described by manufacturer.
- If the EUT is a tabletop system, a table with 0.8 m height is used, which is placed on the ground plane.
- If the EUT is a floor standing device, it is placed on the ground plane with insulation between both.
- Auxiliary equipment and cables were positioned to simulate normal operation conditions
- The AC power port of the EUT (if available) is connected to a power outlet below the turntable.
- The measurement distance is 3 meter.
- The EUT was set into operation.

Premeasurement:

- The turntable rotates from 0° to 315° using 45° steps.
- The antenna is polarized vertical and horizontal.
- The antenna height changes from 1 to 3 meter.
- At each turntable position, antenna polarization and height the analyzer sweeps three times in peak to find the maximum of all emissions.

Final measurement:

- The final measurement will be performed with minimum the six highest peaks.
- According to the maximum antenna and turntable positions of premeasurement the software maximize the peaks by changing turntable position ($\pm 45^\circ$) and antenna movement between 1 and 4 meter.
- The final measurement will be done with QP detector with an EMI receiver.
- The final levels, frequency, measuring time, bandwidth, antenna height, antenna polarization, turntable angle, correction factor, margin to the limit and limit will be recorded. Also a plot with the graph of the premeasurement with marked maximum final measurements and the limit will be stored.

3) Sequence of testing 1 GHz to 18 GHz

Setup:

- The equipment was set up to simulate a typical usage like described in the user manual or described by manufacturer.
- If the EUT is a tabletop system, a rotatable table with 1.5 m height is used.
- If the EUT is a floor standing device, it is placed on the ground plane with insulation between both.
- Auxiliary equipment and cables were positioned to simulate normal operation conditions
- The AC power port of the EUT (if available) is connected to a power outlet below the turntable.
- The measurement distance is 3 meter.
- The EUT was set into operation.

Premeasurement:

- The turntable rotates from 0° to 315° using 45° steps.
- The antenna is polarized vertical and horizontal.
- The antenna height scan range is 1 meter to 2.5 meter.
- At each turntable position and antenna polarization the analyzer sweeps with peak detection to find the maximum of all emissions.

Final measurement:

- The final measurement will be performed with minimum the six highest peaks.
- According to the maximum antenna and turntable positions of premeasurement the software maximize the peaks by changing turntable position ($\pm 45^\circ$) and antenna movement between 1 and 4 meter. This procedure is repeated for both antenna polarizations.
- The final measurement will be done in the position (turntable, EUT-table and antenna polarization) causing the highest emissions with Peak and Average detector.
- The final levels, frequency, measuring time, bandwidth, turntable position, EUT-table position, antenna polarization, correction factor, margin to the limit and limit will be recorded. Also a plot with the graph of the premeasurement with marked maximum final measurements and the limit will be stored.

4) Sequence of testing above 18 GHz

Setup:

- The equipment was set up to simulate a typical usage like described in the user manual or described by manufacturer.
- If the EUT is a tabletop system, a rotatable table with 1.5 m height is used.
- If the EUT is a floor standing device, it is placed on the ground plane with insulation between both.
- Auxiliary equipment and cables were positioned to simulate normal operation conditions
- The AC power port of the EUT (if available) is connected to a power outlet below the turntable.
- The measurement distance is 1 meter.
- The EUT was set into operation.

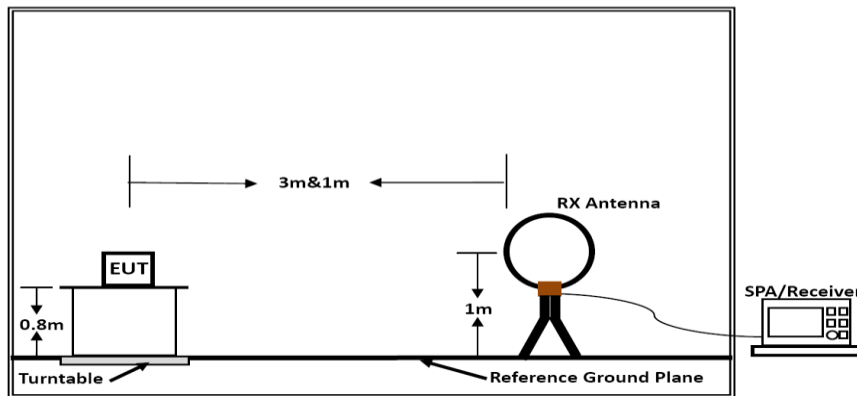
Premeasurement:

- The antenna is moved spherical over the EUT in different polarizations of the antenna.

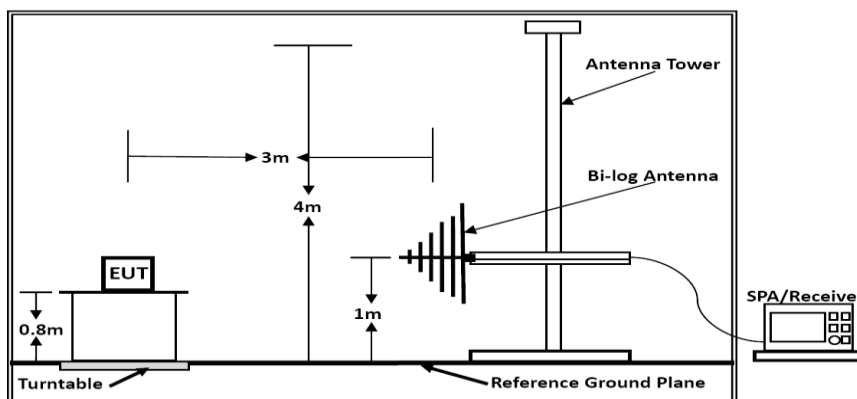
Final measurement:

- The final measurement will be performed at the position and antenna orientation for all detected emissions that were found during the premeasurements with Peak and Average detector.
- The final levels, frequency, measuring time, bandwidth, correction factor, margin to the limit and limit will be recorded. Also a plot with the graph of the premeasurement and the limit will be stored.

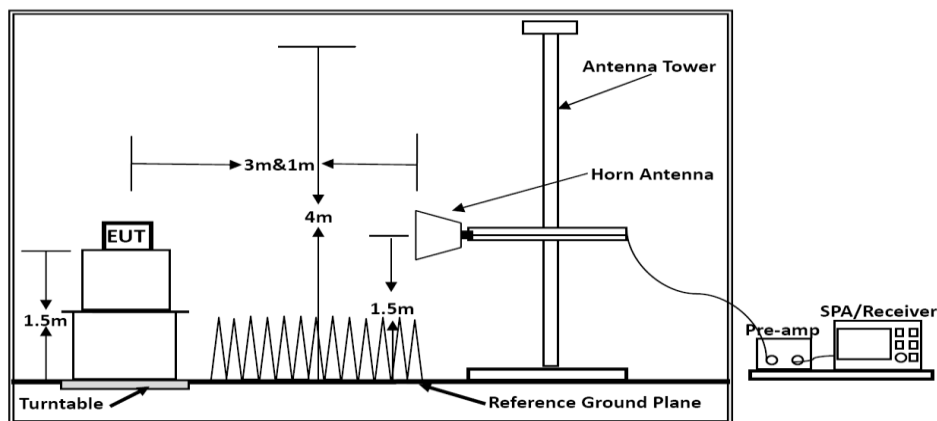
5.5.4. Test Setup Layout



Below 30MHz



Below 1GHz



Above 1GHz

Above 18 GHz shall be extrapolated to the specified distance using an extrapolation factor of 20 dB/decade from 3m to 1m.

Distance extrapolation factor = $20 \log (\text{specific distance [3m]} / \text{test distance [1.5m]})$ (dB);
 Limit line = specific limits (dBuV) + distance extrapolation factor [6 dB].

5.5.5. EUT Operation during Test

The EUT was programmed to be in continuously transmitting mode.

5.5.6. Results of Radiated Emissions (9 KHz~30MHz)

| | | | |
|---------------|---------|----------------|------------------|
| Temperature | 23.6°C | Humidity | 53.5% |
| Test Engineer | Ryan Hu | Configurations | IEEE 802.11b/g/n |

| Freq. (MHz) | Level (dBuV) | Over Limit (dB) | Over Limit (dB) | Remark |
|-------------|--------------|-----------------|-----------------|----------|
| - | - | - | - | See Note |

Note:

The amplitude of spurious emissions which are attenuated by more than 20 dB below the permissible value has no need to be reported.

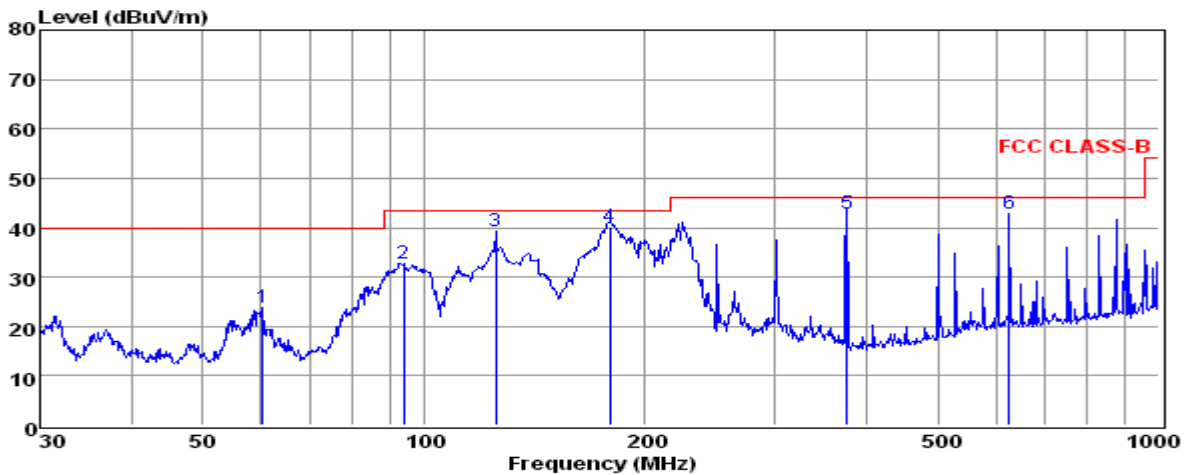
Distance extrapolation factor = 40 log (specific distance / test distance) (dB);
 Limit line = specific limits (dBuV) + distance extrapolation factor.

5.5.7. Results of Radiated Emissions (30MHz~1GHz)

| | | | |
|---------------|---------|----------------|------------------------|
| Temperature | 23.6°C | Humidity | 53.5% |
| Test Engineer | Ryan Hu | Configurations | IEEE 802.11b (High CH) |

Test result for IEEE 802.11b (High Channel)

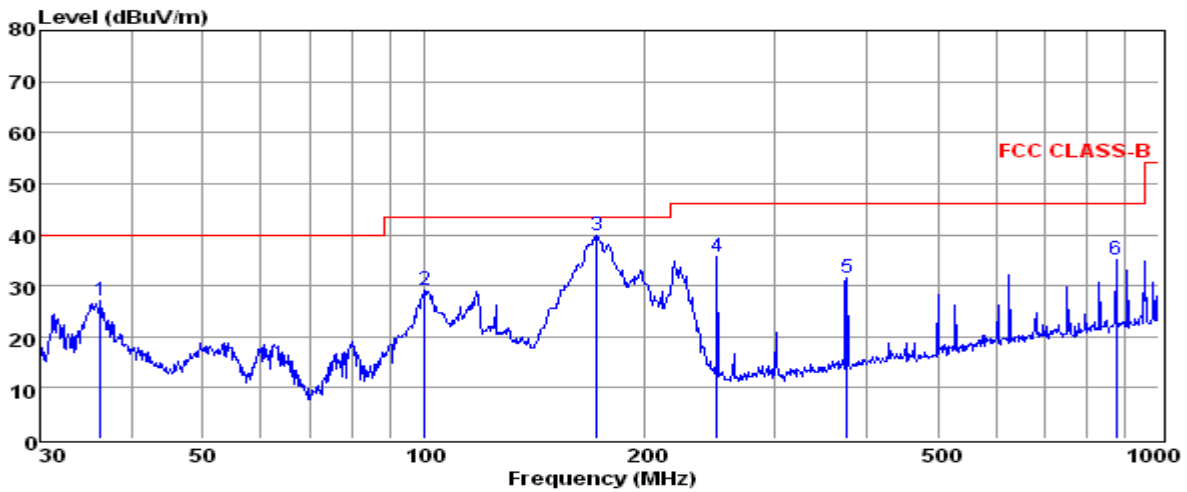
Horizontal



| | Freq | Reading | CabLos | Antfac | Measured | Limit | Over | Remark |
|---|--------|---------|--------|--------|----------|--------|--------|--------|
| | MHz | dBuV | dB | dB/m | dBuV/m | dBuV/m | dB | |
| 1 | 60.28 | 10.68 | 0.49 | 12.58 | 23.75 | 40.00 | -16.25 | QP |
| 2 | 93.77 | 19.59 | 0.56 | 12.61 | 32.76 | 43.50 | -10.74 | QP |
| 3 | 125.01 | 28.85 | 0.71 | 9.70 | 39.26 | 43.50 | -4.24 | QP |
| 4 | 178.76 | 29.80 | 0.89 | 9.59 | 40.28 | 43.50 | -3.22 | QP |
| 5 | 375.94 | 27.09 | 1.10 | 14.56 | 42.75 | 46.00 | -3.25 | QP |
| 6 | 625.08 | 22.91 | 1.49 | 18.54 | 42.94 | 46.00 | -3.06 | QP |

Note: 1. All readings are Quasi-peak values.
 2. Measured= Reading + Antenna Factor + Cable Loss
 3. The emission that are 20db below the official limit are not reported

Vertical



| | Freq | Reading | CabLos | Antfac | Measured | Limit | Over | Remark |
|---|--------|---------|--------|--------|----------|--------|--------|--------|
| | MHz | dBuV | dB | dB/m | dBuV/m | dBuV/m | dB | |
| 1 | 36.25 | 13.95 | 0.41 | 12.62 | 26.98 | 40.00 | -13.02 | QP |
| 2 | 100.23 | 15.36 | 0.60 | 13.14 | 29.10 | 43.50 | -14.40 | QP |
| 3 | 171.99 | 29.95 | 0.91 | 9.11 | 39.97 | 43.50 | -3.53 | QP |
| 4 | 250.30 | 22.54 | 1.02 | 12.07 | 35.63 | 46.00 | -10.37 | QP |
| 5 | 375.94 | 15.91 | 1.10 | 14.56 | 31.57 | 46.00 | -14.43 | QP |
| 6 | 875.25 | 12.42 | 1.87 | 20.84 | 35.13 | 46.00 | -10.87 | QP |

- Note: 1. All readings are Quasi-peak values.
 2. Measured= Reading + Antenna Factor + Cable Loss
 3. The emission that ate 20db bllow the official limit are not reported

Note:

Pre-scan all modes and recorded the worst case results in this report (IEEE 802.11b (High Channel)).

Emission level (dBuV/m) = 20 log Emission level (uV/m).

Corrected Reading: Antenna Factor + Cable Loss + Read Level = Level.

5.5.8. Results for Radiated Emissions (Above 1GHz)

Above 1GHz

IEEE 802.11b

Channel 1 / 2412 MHz

| Freq. MHz | Reading dBuV | Ant. Fac. dB/m | Pre. Fac. dB | Cab. Loss dB | Measured dBuV/m | Limit dBuV/m | Margin dB | Remark | Pol. |
|-----------|--------------|----------------|--------------|--------------|-----------------|--------------|-----------|---------|------------|
| 4824.00 | 58.00 | 33.06 | 35.14 | 3.98 | 59.90 | 74.00 | -14.10 | Peak | Horizontal |
| 4824.00 | 38.49 | 33.06 | 35.14 | 3.98 | 40.39 | 54.00 | -13.61 | Average | Horizontal |
| 4824.00 | 56.70 | 33.06 | 35.14 | 3.98 | 58.60 | 74.00 | -15.40 | Peak | Vertical |
| 4824.00 | 42.66 | 33.06 | 35.14 | 3.98 | 44.56 | 54.00 | -9.44 | Average | Vertical |

Channel 6 / 2437 MHz

| Freq. MHz | Reading dBuV | Ant. Fac. dB/m | Pre. Fac. dB | Cab. Loss dB | Measured dBuV/m | Limit dBuV/m | Margin dB | Remark | Pol. |
|-----------|--------------|----------------|--------------|--------------|-----------------|--------------|-----------|---------|------------|
| 4874.00 | 53.90 | 33.16 | 35.15 | 3.96 | 55.87 | 74.00 | -18.13 | Peak | Horizontal |
| 4874.00 | 36.69 | 33.16 | 35.15 | 3.96 | 38.66 | 54.00 | -15.34 | Average | Horizontal |
| 4874.00 | 58.89 | 33.16 | 35.15 | 3.96 | 60.86 | 74.00 | -13.14 | Peak | Vertical |
| 4874.00 | 41.96 | 33.16 | 35.15 | 3.96 | 43.93 | 54.00 | -10.07 | Average | Vertical |

Channel 11 / 2462 MHz

| Freq. MHz | Reading dBuV | Ant. Fac. dB/m | Pre. Fac. dB | Cab. Loss dB | Measured dBuV/m | Limit dBuV/m | Margin dB | Remark | Pol. |
|-----------|--------------|----------------|--------------|--------------|-----------------|--------------|-----------|---------|------------|
| 4924.00 | 54.53 | 33.26 | 35.14 | 3.98 | 56.63 | 74.00 | -17.37 | Peak | Horizontal |
| 4924.00 | 40.08 | 33.26 | 35.14 | 3.98 | 42.18 | 54.00 | -11.82 | Average | Horizontal |
| 4924.00 | 58.27 | 33.26 | 35.14 | 3.98 | 60.37 | 74.00 | -13.63 | Peak | Vertical |
| 4924.00 | 39.73 | 33.26 | 35.14 | 3.98 | 41.83 | 54.00 | -12.17 | Average | Vertical |

IEEE 802.11g

Channel 1 / 2412 MHz

| Freq. MHz | Reading dBuV | Ant. Fac. dB/m | Pre. Fac. dB | Cab. Loss dB | Measured dBuV/m | Limit dBuV/m | Margin dB | Remark | Pol. |
|-----------|--------------|----------------|--------------|--------------|-----------------|--------------|-----------|---------|------------|
| 4824.00 | 55.25 | 33.06 | 35.14 | 3.98 | 57.15 | 74.00 | -16.85 | Peak | Horizontal |
| 4824.00 | 40.15 | 33.06 | 35.14 | 3.98 | 42.05 | 54.00 | -11.95 | Average | Horizontal |
| 4824.00 | 58.42 | 33.06 | 35.14 | 3.98 | 60.32 | 74.00 | -13.68 | Peak | Vertical |
| 4824.00 | 39.14 | 33.06 | 35.14 | 3.98 | 41.04 | 54.00 | -12.96 | Average | Vertical |

Channel 6 / 2437 MHz

| Freq. MHz | Reading dBuV | Ant. Fac. dB/m | Pre. Fac. dB | Cab. Loss dB | Measured dBuV/m | Limit dBuV/m | Margin dB | Remark | Pol. |
|-----------|--------------|----------------|--------------|--------------|-----------------|--------------|-----------|---------|------------|
| 4874.00 | 57.95 | 33.16 | 35.15 | 3.96 | 59.92 | 74.00 | -14.08 | Peak | Horizontal |
| 4874.00 | 36.97 | 33.16 | 35.15 | 3.96 | 38.94 | 54.00 | -15.06 | Average | Horizontal |
| 4874.00 | 58.51 | 33.16 | 35.15 | 3.96 | 60.48 | 74.00 | -13.52 | Peak | Vertical |
| 4874.00 | 41.26 | 33.16 | 35.15 | 3.96 | 43.23 | 54.00 | -10.77 | Average | Vertical |

Channel 11 / 2462 MHz

| Freq. MHz | Reading dBuV | Ant. Fac. dB/m | Pre. Fac. dB | Cab. Loss dB | Measured dBuV/m | Limit dBuV/m | Margin dB | Remark | Pol. |
|-----------|--------------|----------------|--------------|--------------|-----------------|--------------|-----------|---------|------------|
| 4924.00 | 57.99 | 33.26 | 35.14 | 3.98 | 60.09 | 74.00 | -13.91 | Peak | Horizontal |
| 4924.00 | 36.30 | 33.26 | 35.14 | 3.98 | 38.40 | 54.00 | -15.60 | Average | Horizontal |
| 4924.00 | 59.47 | 33.26 | 35.14 | 3.98 | 61.57 | 74.00 | -12.43 | Peak | Vertical |
| 4924.00 | 40.48 | 33.26 | 35.14 | 3.98 | 42.58 | 54.00 | -11.42 | Average | Vertical |

IEEE 802.11n HT20

Channel 1 / 2412 MHz

| Freq. MHz | Reading dBuV | Ant. Fac. dB/m | Pre. Fac. dB | Cab. Loss dB | Measured dBuV/m | Limit dBuV/m | Margin dB | Remark | Pol. |
|-----------|--------------|----------------|--------------|--------------|-----------------|--------------|-----------|---------|------------|
| 4824.00 | 51.97 | 33.06 | 35.14 | 3.98 | 53.87 | 74.00 | -20.13 | Peak | Horizontal |
| 4824.00 | 35.78 | 33.06 | 35.14 | 3.98 | 37.68 | 54.00 | -16.32 | Average | Horizontal |
| 4824.00 | 53.53 | 33.06 | 35.14 | 3.98 | 55.43 | 74.00 | -18.57 | Peak | Vertical |
| 4824.00 | 39.88 | 33.06 | 35.14 | 3.98 | 41.78 | 54.00 | -12.22 | Average | Vertical |

Channel 6 / 2437 MHz

| Freq. MHz | Reading dBuV | Ant. Fac. dB/m | Pre. Fac. dB | Cab. Loss dB | Measured dBuV/m | Limit dBuV/m | Margin dB | Remark | Pol. |
|-----------|--------------|----------------|--------------|--------------|-----------------|--------------|-----------|---------|------------|
| 4874.00 | 49.71 | 33.16 | 35.15 | 3.96 | 51.68 | 74.00 | -22.32 | Peak | Horizontal |
| 4874.00 | 37.74 | 33.16 | 35.15 | 3.96 | 39.71 | 54.00 | -14.29 | Average | Horizontal |
| 4874.00 | 57.52 | 33.16 | 35.15 | 3.96 | 59.49 | 74.00 | -14.51 | Peak | Vertical |
| 4874.00 | 35.59 | 33.16 | 35.15 | 3.96 | 37.56 | 54.00 | -16.44 | Average | Vertical |

Channel 11 / 2462 MHz

| Freq. MHz | Reading dBuV | Ant. Fac. dB/m | Pre. Fac. dB | Cab. Loss dB | Measured dBuV/m | Limit dBuV/m | Margin dB | Remark | Pol. |
|-----------|--------------|----------------|--------------|--------------|-----------------|--------------|-----------|---------|------------|
| 4924.00 | 49.00 | 33.26 | 35.14 | 3.98 | 51.10 | 74.00 | -22.90 | Peak | Horizontal |
| 4924.00 | 34.31 | 33.26 | 35.14 | 3.98 | 36.41 | 54.00 | -17.59 | Average | Horizontal |
| 4924.00 | 55.10 | 33.26 | 35.14 | 3.98 | 57.20 | 74.00 | -16.80 | Peak | Vertical |
| 4924.00 | 35.23 | 33.26 | 35.14 | 3.98 | 37.33 | 54.00 | -16.67 | Average | Vertical |

IEEE 802.11n HT40

Channel 3 / 2422 MHz

| Freq. MHz | Reading dBuV | Ant. Fac. dB/m | Pre. Fac. dB | Cab. Loss dB | Measured dBuV/m | Limit dBuV/m | Margin dB | Remark | Pol. |
|-----------|--------------|----------------|--------------|--------------|-----------------|--------------|-----------|---------|------------|
| 4844.00 | 52.60 | 33.06 | 35.14 | 3.98 | 54.50 | 74.00 | -19.50 | Peak | Horizontal |
| 4844.00 | 32.16 | 33.06 | 35.14 | 3.98 | 34.06 | 54.00 | -19.94 | Average | Horizontal |
| 4844.00 | 56.56 | 33.06 | 35.14 | 3.98 | 58.46 | 74.00 | -15.54 | Peak | Vertical |
| 4844.00 | 35.80 | 33.06 | 35.14 | 3.98 | 37.70 | 54.00 | -16.30 | Average | Vertical |

Channel 6 / 2437 MHz

| Freq. MHz | Reading dBuV | Ant. Fac. dB/m | Pre. Fac. dB | Cab. Loss dB | Measured dBuV/m | Limit dBuV/m | Margin dB | Remark | Pol. |
|-----------|--------------|----------------|--------------|--------------|-----------------|--------------|-----------|---------|------------|
| 4874.00 | 51.20 | 33.16 | 35.15 | 3.96 | 53.17 | 74.00 | -20.83 | Peak | Horizontal |
| 4874.00 | 32.82 | 33.16 | 35.15 | 3.96 | 34.79 | 54.00 | -19.21 | Average | Horizontal |
| 4874.00 | 54.52 | 33.16 | 35.15 | 3.96 | 56.49 | 74.00 | -17.51 | Peak | Vertical |
| 4874.00 | 39.93 | 33.16 | 35.15 | 3.96 | 41.90 | 54.00 | -12.10 | Average | Vertical |

Channel 9 / 2452 MHz

| Freq. MHz | Reading dBuV | Ant. Fac. dB/m | Pre. Fac. dB | Cab. Loss dB | Measured dBuV/m | Limit dBuV/m | Margin dB | Remark | Pol. |
|-----------|--------------|----------------|--------------|--------------|-----------------|--------------|-----------|---------|------------|
| 4904.00 | 50.09 | 33.26 | 35.14 | 3.98 | 52.19 | 74.00 | -21.81 | Peak | Horizontal |
| 4904.00 | 33.00 | 33.26 | 35.14 | 3.98 | 35.10 | 54.00 | -18.90 | Average | Horizontal |
| 4904.00 | 52.06 | 33.26 | 35.14 | 3.98 | 54.16 | 74.00 | -19.84 | Peak | Vertical |
| 4904.00 | 38.70 | 33.26 | 35.14 | 3.98 | 40.80 | 54.00 | -13.20 | Average | Vertical |

Notes:

1. Measuring frequencies from 9 KHz~10th harmonic or 26.5GHz (which is less), No emission found between lowest internal used/generated frequency to 30MHz.
2. Radiated emissions measured in frequency range from 9 kHz~10th harmonic or 26.5GHz (which is less) were made with an instrument using Peak detector mode.
3. Data of measurement within this frequency range shown "---" in the table above means the reading of emissions are attenuated more than 20dB below the permissible limits or the field strength is too small to be measured.
4. Worst case data at 1Mbps at IEEE 802.11b; 6Mbps at IEEE 802.11g; 6.5Mbps at IEEE 802.11n HT20; 13.5Mbps at IEEE 802.11n HT40.

5.6. Conducted Spurious Emissions and Band Edges Test

5.6.1. Standard Applicable

According to §15.247 (d): In any 100 kHz bandwidth outside the frequency band in which the spread spectrum or digitally modulated intentional radiator is operating, the radio frequency power that is produced by the intentional radiator shall be at least 20 dB below that in the 100 kHz bandwidth within the band that contains the highest level of the desired power, based on either an RF conducted or a radiated measurement. Attenuation below the general limits specified in Section 15.209(a) is not required. In addition, radiated emissions which fall in the restricted bands, as defined in Section 15.205(a), must also comply with the radiated emission limits specified in Section 15.209(a) (see Section 15.205(c)).

5.6.2. Measuring Instruments and Setting

Please refer to equipment list in this report. The following table is the setting of the spectrum analyzer.

| Spectrum Parameter | Setting |
|---|---------------|
| Detector | Peak |
| Attenuation | Auto |
| RB / VB (Emission in restricted band) | 100KHz/300KHz |
| RB / VB (Emission in non-restricted band) | 100KHz/300KHz |

5.6.3. Test Procedures

The transmitter output is connected to a spectrum analyzer. The resolution bandwidth is set to 100 KHz. The video bandwidth is set to 300 KHz

The spectrum from 9 KHz to 26.5 GHz is investigated with the transmitter set to the lowest, middle, and highest channels.

5.6.4. Test Setup Layout

This test setup layout is the same as that shown in section 5.4.4.

5.6.5. EUT Operation during Test

The EUT was programmed to be in continuously transmitting mode.

5.6.6. Test Results of Conducted Spurious Emissions

PASS

Please refer to Appendix A 2.4G WIFI Test Data Section A.5 for conducted spurious emission;

Please refer to Appendix A 2.4G WIFI Test Data Section A.6 for conducted band edge.

Remark:

- 1). Measured RF conducted spurious emission at difference data rate for each mode and recorded worst case for each mode.
- 2). Test results including cable loss;
- 3). Worst case data at 1Mbps at IEEE 802.11b; 6Mbps at IEEE 802.11g; 6.5Mbps at IEEE 802.11n HT20; 13.5Mbps at IEEE 802.11n Ht40;
- 4). “---“means that the fundamental frequency not for 15.209 limits requirement.
- 5). Not recorded emission from 9 KHz to 30 MHz as emission level at least 20dBc lower than emission limit.

5.7. AC Power line conducted emissions

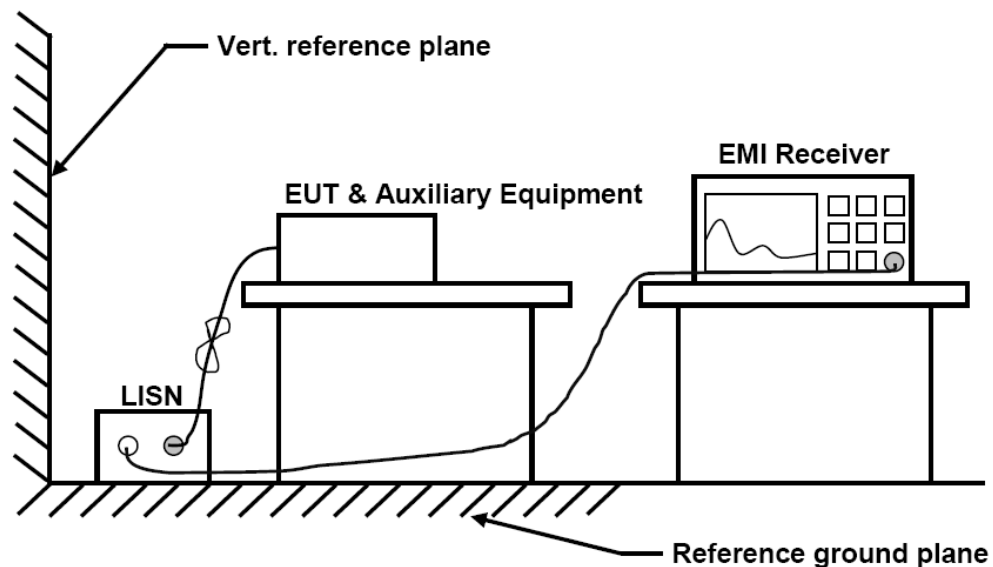
5.7.1 Standard Applicable

According to §15.207 (a): For an intentional radiator which is designed to be connected to the public utility (AC) power line, the radio frequency voltage that is conducted back onto the AC power line on any frequency or frequencies within the band 150 kHz to 30 MHz shall not exceed 250 microvolts (The limit decreases linearly with the logarithm of the frequency in the range 0.15 MHz to 0.50 MHz). The limits at specific frequency range are listed as follows:

| Frequency Range (MHz) | Limits (dB μ V) | |
|-----------------------|---------------------|----------|
| | Quasi-peak | Average |
| 0.15 to 0.50 | 66 to 56 | 56 to 46 |
| 0.50 to 5 | 56 | 46 |
| 5 to 30 | 60 | 50 |

* Decreasing linearly with the logarithm of the frequency

5.7.2 Block Diagram of Test Setup



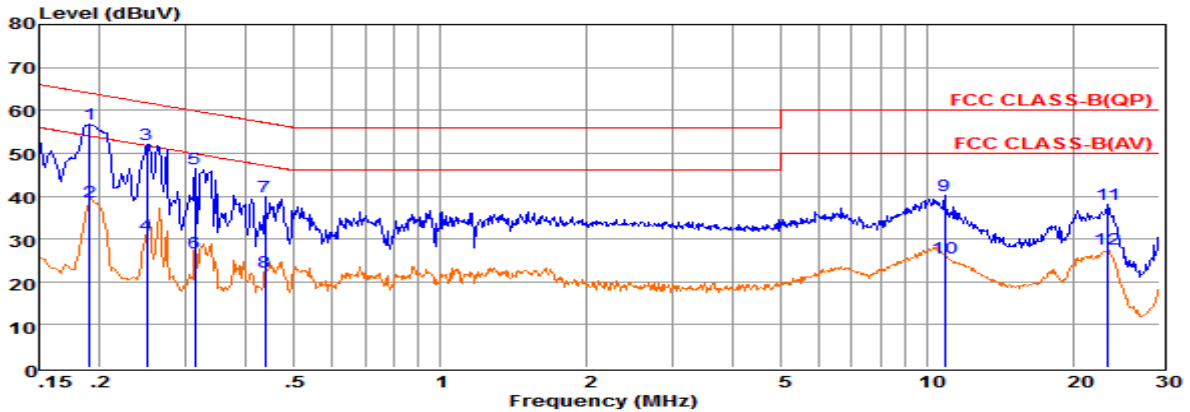
5.7.3 Test Results

PASS.

The test data please refer to following page.

AC Conducted Emission of power adapter @ AC 120V/60Hz @ IEEE 802.11b (worst case)

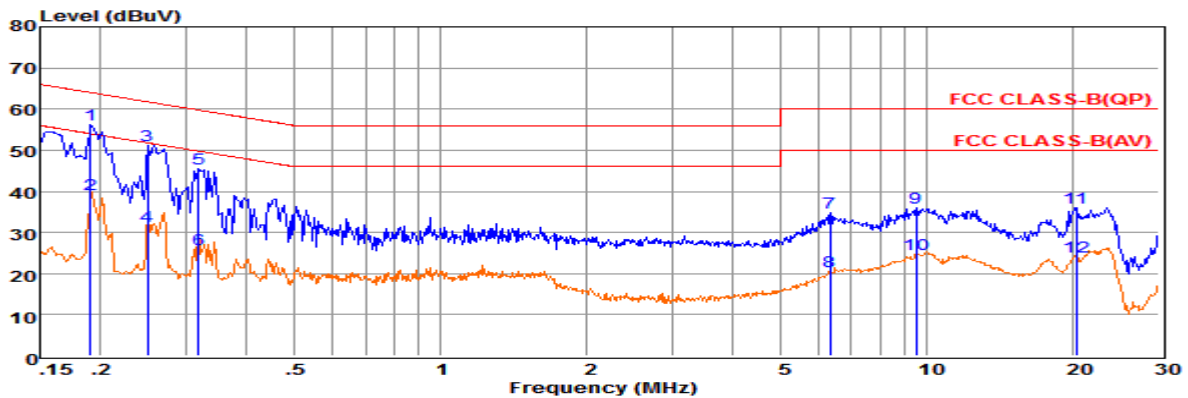
Line



| Freq | Reading | LISNFac | CabLos | Aux2Fac | Measured | Limit | Over | Remark |
|------|---------|---------|--------|---------|----------|-------|-------|----------------|
| MHz | dBuV | dB | dB | dB | dBuV | dBuV | dB | |
| 1 | 0.19 | 37.08 | 9.62 | 0.02 | 10.00 | 56.72 | 64.02 | -7.30 QP |
| 2 | 0.19 | 19.11 | 9.62 | 0.02 | 10.00 | 38.75 | 54.02 | -15.27 Average |
| 3 | 0.25 | 32.52 | 9.63 | 0.03 | 10.00 | 52.18 | 61.78 | -9.60 QP |
| 4 | 0.25 | 11.31 | 9.63 | 0.03 | 10.00 | 30.97 | 51.77 | -20.80 Average |
| 5 | 0.31 | 26.64 | 9.63 | 0.03 | 10.00 | 46.30 | 59.88 | -13.58 QP |
| 6 | 0.31 | 7.18 | 9.63 | 0.03 | 10.00 | 26.84 | 49.88 | -23.04 Average |
| 7 | 0.44 | 20.31 | 9.62 | 0.04 | 10.00 | 39.97 | 57.11 | -17.14 QP |
| 8 | 0.44 | 2.78 | 9.62 | 0.04 | 10.00 | 22.44 | 47.11 | -24.67 Average |
| 9 | 10.85 | 20.52 | 9.69 | 0.08 | 10.00 | 40.29 | 60.00 | -19.71 QP |
| 10 | 10.85 | 5.92 | 9.69 | 0.08 | 10.00 | 25.69 | 50.00 | -24.31 Average |
| 11 | 23.51 | 18.24 | 9.71 | 0.13 | 10.00 | 38.08 | 60.00 | -21.92 QP |
| 12 | 23.51 | 7.78 | 9.71 | 0.13 | 10.00 | 27.62 | 50.00 | -22.38 Average |

Remarks: 1. Measured = Reading + LISNFac + Cable Loss + Aux2 Fac.
 2. The emission levels that are 20dB below the official limit are not reported.

Neutral



| Freq | Reading | LISNFac | CabLos | Aux2Fac | Measured | Limit | Over | Remark |
|------|---------|---------|--------|---------|----------|-------|-------|----------------|
| MHz | dBuV | dB | dB | dB | dBuV | dBuV | dB | |
| 1 | 0.19 | 36.60 | 9.61 | 0.02 | 10.00 | 56.23 | 64.02 | -7.79 QP |
| 2 | 0.19 | 19.54 | 9.61 | 0.02 | 10.00 | 39.17 | 54.02 | -14.85 Average |
| 3 | 0.25 | 31.58 | 9.60 | 0.03 | 10.00 | 51.21 | 61.78 | -10.57 QP |
| 4 | 0.25 | 12.00 | 9.60 | 0.03 | 10.00 | 31.63 | 51.77 | -20.14 Average |
| 5 | 0.32 | 25.88 | 9.61 | 0.03 | 10.00 | 45.52 | 59.75 | -14.23 QP |
| 6 | 0.32 | 6.13 | 9.61 | 0.03 | 10.00 | 25.77 | 49.75 | -23.98 Average |
| 7 | 6.32 | 15.06 | 9.68 | 0.07 | 10.00 | 34.81 | 60.00 | -25.19 QP |
| 8 | 6.32 | 0.86 | 9.68 | 0.07 | 10.00 | 20.61 | 50.00 | -29.39 Average |
| 9 | 9.50 | 16.07 | 9.72 | 0.08 | 10.00 | 35.87 | 60.00 | -24.13 QP |
| 10 | 9.50 | 4.86 | 9.72 | 0.08 | 10.00 | 24.66 | 50.00 | -25.34 Average |
| 11 | 20.27 | 16.02 | 9.88 | 0.12 | 10.00 | 36.02 | 60.00 | -23.98 QP |
| 12 | 20.27 | 4.01 | 9.88 | 0.12 | 10.00 | 24.01 | 50.00 | -25.99 Average |

Remarks: 1. Measured = Reading + LISNFac + Cable Loss + Aux2 Fac.
 2. The emission levels that are 20dB below the official limit are not reported.

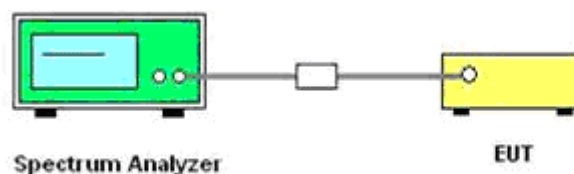
***Note: Pre-scan all modes and recorded the worst case results in this report (IEEE 802.11b).

5.8. Band-edge measurements for radiated emissions

5.8.1 Standard Applicable

In any 100 kHz bandwidth outside the frequency band in which the spread spectrum or digitally modulated intentional radiator is operating, the radio frequency power that is produced by the intentional radiator shall be at least 20dB below that in the 100 kHz bandwidth within the band that contains the highest level of the desired power, based on either an RF conducted or a radiated measurement, provided the transmitter demonstrates compliance with the peak conducted power limits. If the transmitter complies with the conducted power limits based on the use of RMS averaging over a time interval, as permitted under paragraph (b)(3) of this section, the attenuation required under this paragraph shall be 30 dB instead of 20dB. Attenuation below the general limits specified in §15.209(a) is not required. In addition, radiated emissions which fall in the restricted bands, as defined in §15.205(a), must also comply with the radiated emission limits specified in §15.209(a) (see §15.205(c)).

5.8.2. Test Setup Layout



5.8.3. Measuring Instruments and Setting

Please refer to equipment list in this report. The following table is the setting of Spectrum Analyzer.

5.8.4. Test Procedures

According to KDB 558074 D01 for Antenna-port conducted measurement. Antenna-port conducted measurements may also be used as an alternative to radiated measurements for demonstrating compliance in the restricted frequency bands. If conducted measurements are performed, then proper impedance matching must be ensured and an additional radiated test for cabinet/case spurious emissions is required.

- 1). Check the calibration of the measuring instrument using either an internal calibrator or a known signal from an external generator.
- 2). Remove the antenna from the EUT and then connect to a low loss RF cable from the antenna port to an EMI test receiver, then turn on the EUT and make it operate in transmitting mode. Then set it to Low Channel and High Channel within its operating range, and make sure the instrument is operated in its linear range.
- 3). Set both RBW and VBW of spectrum analyzer to 100 kHz with a convenient frequency span including 100kHz bandwidth from band edge, for Radiated emissions restricted band RBW=1MHz, VBW=3MHz for peak detector and RBW=1MHz, VBW=1/B for AV detector.
- 4). Measure the highest amplitude appearing on spectral display and set it as a reference level. Plot the graph with marking the highest point and edge frequency.
- 5). Repeat above procedures until all measured frequencies were complete.
- 6). Measure the conducted output power (in dBm) using the detector specified by the appropriate regulatory agency (see 12.2.2, 12.2.3, and 12.2.4 for guidance regarding measurement procedures for determining quasi-peak, peak, and average conducted output power, respectively).
- 7). Add the maximum transmit antenna gain (in dBi) to the measured output power level to determine the EIRP level (see 12.2.5 for guidance on determining the applicable antenna gain)
- 8). Add the appropriate maximum ground reflection factor to the EIRP level (6 dB for frequencies ≤ 30 MHz, 4.7 dB for frequencies between 30 MHz and 1000 MHz, inclusive and 0 dB for frequencies > 1000 MHz).
- 9). For devices with multiple antenna-ports, measure the power of each individual chain and sum the EIRP of all chains in linear terms (e.g., Watts, mW).
- 10). Convert the resultant EIRP level to an equivalent electric field strength using the following relationship:

$$E = \text{EIRP} - 20\log D + 104.77 = \text{EIRP} + 95.23$$

Where:

E = electric field strength in dB μ V/m,

EIRP = equivalent isotropic radiated power in dBm

D = specified measurement distance in meters.

11). Since the out-of-band characteristics of the EUT transmit antenna will often be unknown, the use of a conservative antenna gain value is necessary. Thus, when determining the EIRP based on the measured conducted power, the upper bound on antenna gain for a device with a single RF output shall be selected as the maximum in-band gain of the antenna across all operating bands, or 2 dBi, whichever is greater.

However, for devices that operate in multiple frequency bands while using the same transmit antenna, the highest gain of the antenna within the operating band nearest in frequency to the restricted band emission being measured may be used in lieu of the overall highest gain when the emission is at a frequency that is within 20 percent of the nearest band edge frequency, but in no case shall a value less than 2 dBi be used.

12). Compare the resultant electric field strength level to the applicable regulatory limit.

13). Perform radiated spurious emission test duress until all measured frequencies were complete.

5.8.5 Test Results

PASS

Please refer to Appendix A 2.4G WIFI Test Data Section A.7

Remark:

- 1). Measured Band edge measurement for radiated emission at difference data rate for each mode and recorded worst case for each mode.
- 2). Test results including cable loss;
- 3). Worst case data at 1Mbps at IEEE 802.11b; 6Mbps at IEEE 802.11g; 6.5Mbps at IEEE 802.11n HT20; 13.5Mbps at IEEE 802.11n HT40;
- 4). “---“means that the fundamental frequency not for 15.209 limits requirement.

5.9. Antenna Requirements

5.9.1 Standard Applicable

According to antenna requirement of §15.203, an intentional radiator shall be designed to ensure that no antenna other than that furnished by the responsible party shall be used with the device. The use of a permanently attached antenna or of an antenna that uses a unique coupling to the intentional radiator shall be considered sufficient to comply with the provisions of this Section. The manufacturer may design the unit so that a broken antenna can be re-placed by the user, but the use of a standard antenna jack or electrical connector is prohibited. This requirement does not apply to carrier current devices or to devices operated under the provisions of Sections 15.211, 15.213, 15.217, 15.219, or 15.221. Further, this requirement does not apply to intentional radiators that must be professionally installed, such as perimeter protection systems and some field disturbance sensors, or to other intentional radiators which, in accordance with Section 15.31(d), must be measured at the installation site. However, the installer shall be responsible for ensuring that the proper antenna is employed so that the limits in this Part are not exceeded.

And according to §15.247(4)(1), system operating in the 2400-2483.5MHz bands that are used exclusively for fixed, point-to-point operations may employ transmitting antennas with directional gain greater than 6dBi provided the maximum peak output power of the intentional radiator is reduced by 1 dB for every 3 dB that the directional gain of the antenna exceeds 6dBi.

5.9.2 Antenna Connected Construction

5.9.2.1. Standard Applicable

According to § 15.203, an intentional radiator shall be designed to ensure that no antenna other than that furnished by the responsible party shall be used with the device.

5.9.2.2. Antenna Connector Construction

The antenna gain used for transmitting is 2dBi, and the antenna is an external antenna connect to PCB board and no consideration of replacement. Please see EUT photo for details.

5.9.2.3. Results: Compliance.

Measurement

The antenna gain of the complete system is calculated by the difference of radiated power in EIRP and the conducted power of the module.

Conducted power refers ANSI C63.10:2013 Output power test procedure for DTS devices.

Radiated power refers to ANSI C63.10:2013 Radiated emissions tests.

Measurement parameters

| Measurement parameter | |
|-----------------------|----------|
| Detector: | Peak |
| Sweep Time: | Auto |
| Resolution bandwidth: | 1MHz |
| Video bandwidth: | 3MHz |
| Trace-Mode: | Max hold |

Note: The antenna gain of the complete system is calculated by the difference of radiated power in EIRP and the conducted power of the module. For normal WLAN devices, the IEEE 802.11b mode is used.

Limits

| | |
|--------------|------|
| FCC | ISED |
| Antenna Gain | |
| 6 dBi | |

| T _{nom} | V _{nom} | lowest channel 2412 MHz | middle channel 2437 MHz | highest channel 2462 MHz |
|---|------------------|----------------------------|------------------------------------|-----------------------------|
| Conducted power [dBm] Measured with DSSS modulation | | 18.250 | 18.100 | 18.860 |
| Radiated power [dBm] Measured with DSSS modulation | | 20.066 | 19.963 | 20.767 |
| Gain [dBi] Calculated | | 1.816 | 1.863 | 1.907 |
| Measurement uncertainty | | | ± 1.6 dB (cond.) / ± 3.8 dB (rad.) | |

6. LIST OF MEASURING EQUIPMENTS

| Item | Equipment | Manufacturer | Model No. | Serial No. | Last Cal. | Next Cal. |
|------|--------------------------------------|-------------------|--------------|--------------------------|------------|------------|
| 1 | Power Meter | R&S | NRVS | 100444 | 2017-06-17 | 2018-06-16 |
| 2 | Power Sensor | R&S | NRV-Z81 | 100458 | 2017-06-17 | 2018-06-16 |
| 3 | Power Sensor | R&S | NRV-Z32 | 10057 | 2017-06-17 | 2018-06-16 |
| 4 | ESA-E SERIES SPECTRUM ANALYZER | Agilent | E4407B | MY41440754 | 2017-11-17 | 2018-11-16 |
| 5 | MXA Signal Analyzer | Agilent | N9020A | MY49100040 | 2017-06-17 | 2018-06-16 |
| 6 | SPECTRUM ANALYZER | R&S | FSP | 100503 | 2017-06-17 | 2018-06-16 |
| 7 | 3m Semi Anechoic Chamber | SIDT FRANKONIA | SAC-3M | 03CH03-HY | 2017-06-17 | 2018-06-16 |
| 8 | Positioning Controller | MF | MF-7082 | / | 2017-06-17 | 2018-06-16 |
| 9 | EMI Test Software | AUDIX | E3 | N/A | 2017-06-17 | 2018-06-16 |
| 10 | EMI Test Receiver | R&S | ESR 7 | 101181 | 2017-06-17 | 2018-06-16 |
| 11 | AMPLIFIER | QuieTek | QTK-A2525G | CHPPC-4218-V KI809065 | 2017-11-17 | 2018-11-16 |
| 12 | Active Loop Antenna | SCHWARZBECK | FMZB 1519B | 00005 | 2017-06-23 | 2018-06-22 |
| 13 | By-log Antenna | SCHWARZBECK | VULB9163 | 9163-470 | 2018-05-02 | 2019-05-01 |
| 14 | Horn Antenna | EMCO | 3115 | 6741 | 2017-06-23 | 2018-06-22 |
| 15 | Broadband Horn Antenna | SCHWARZBECK | BBHA 9170 | 791 | 2017-09-21 | 2018-09-20 |
| 16 | Broadband Preamplifier | SCHWARZBECK | BBV 9719 | 9719-025 | 2017-09-21 | 2018-09-20 |
| 17 | RF Cable-R03m | Jye Bao | RG142 | CB021 | 2017-06-17 | 2018-06-16 |
| 18 | RF Cable-HIGH | SUHNER | SUCOFLEX 106 | 03CH03-HY | 2017-06-17 | 2018-06-16 |
| 19 | TEST RECEIVER | R&S | ESCI | 101142 | 2017-06-17 | 2018-06-16 |
| 20 | RF Cable-CON | UTIFLEX | 3102-26886-4 | CB049 | 2017-06-17 | 2018-06-16 |
| 21 | 10dB Attenuator | SCHWARZBECK | MTS-IMP136 | 261115-001-00 32 | 2017-06-17 | 2018-06-16 |
| 22 | Artificial Mains | R&S | ENV216 | 101288 | 2017-06-17 | 2018-06-16 |
| 23 | RF Control Unit | Tonscend | JS0806-2 | 178060073 | 2017-10-28 | 2018-10-27 |
| 24 | BT/WIFI Test Software | Tonscend | JS1120-3 | / | N/A | N/A |

Note: All equipment is calibrated through GUANGZHOU LISAI CALIBRATION AND TEST CO.,LTD.

7. TEST SETUP PHOTOGRAPHS OF EUT

Please refer to separate file for Test Setup photos.

8. EXTERIOR PHOTOGRAPHS OF THE EUT

Please refer to separate file for exterior photos.

9. INTERIOR PHOTOGRAPHS OF THE EUT

Please refer to separate file for interior photos.

Test Setup photos



Conducted emission



Radiated emission below 1GHz



Radiated emission above 1GHz

Exterior Photos



Fig.1

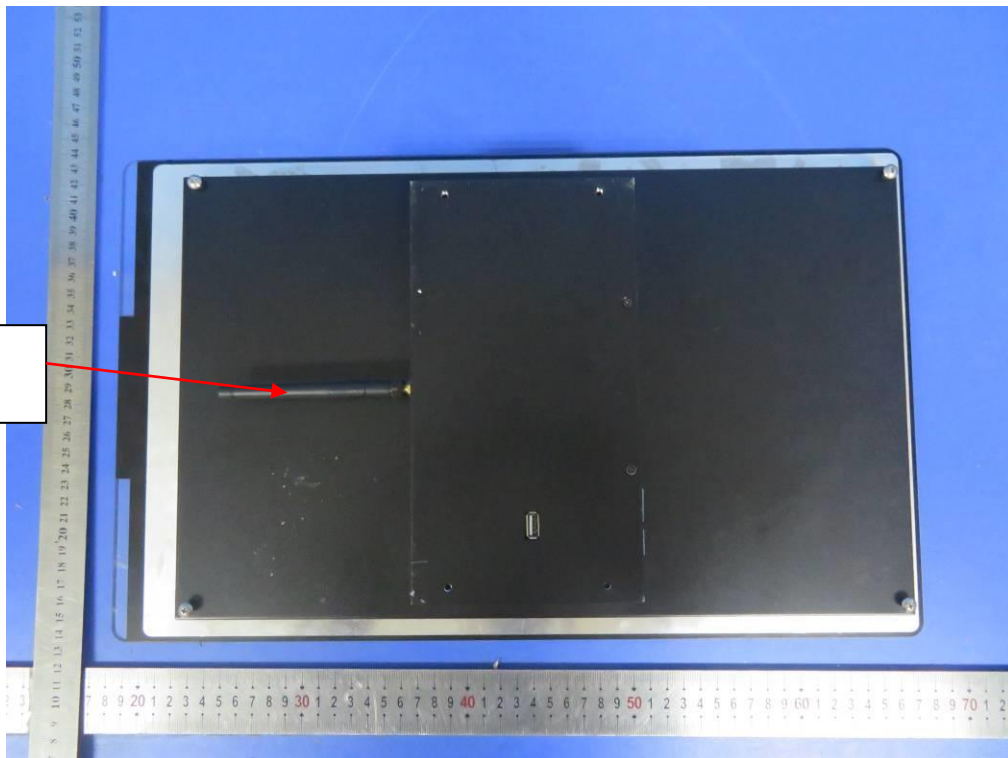


Fig.2

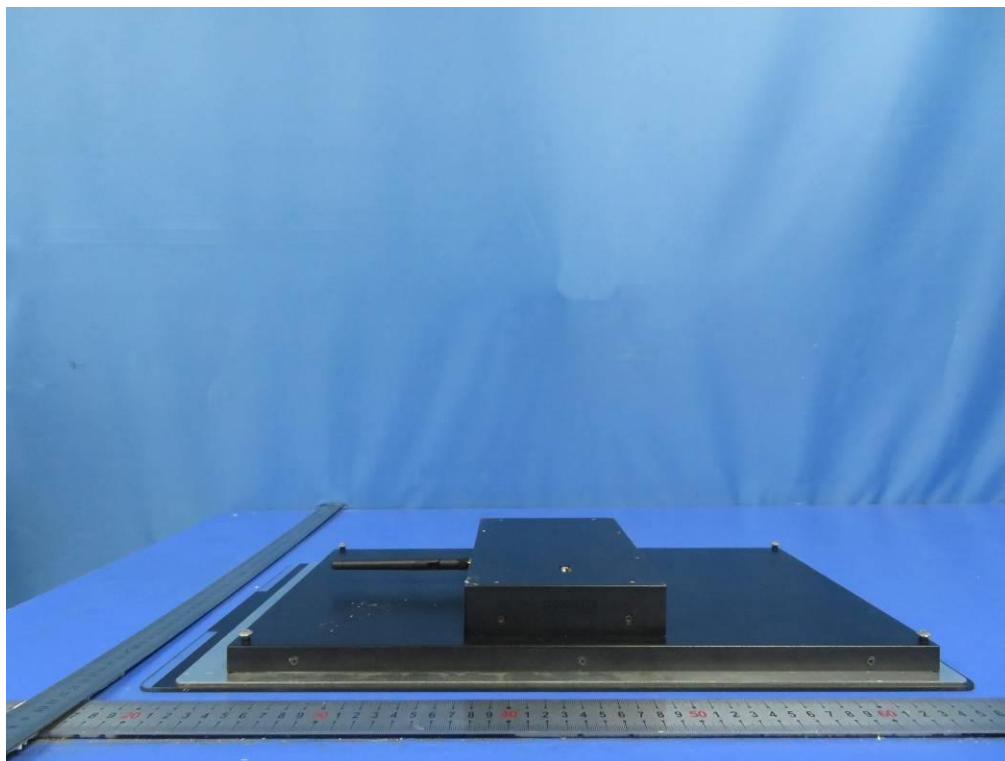


Fig.3

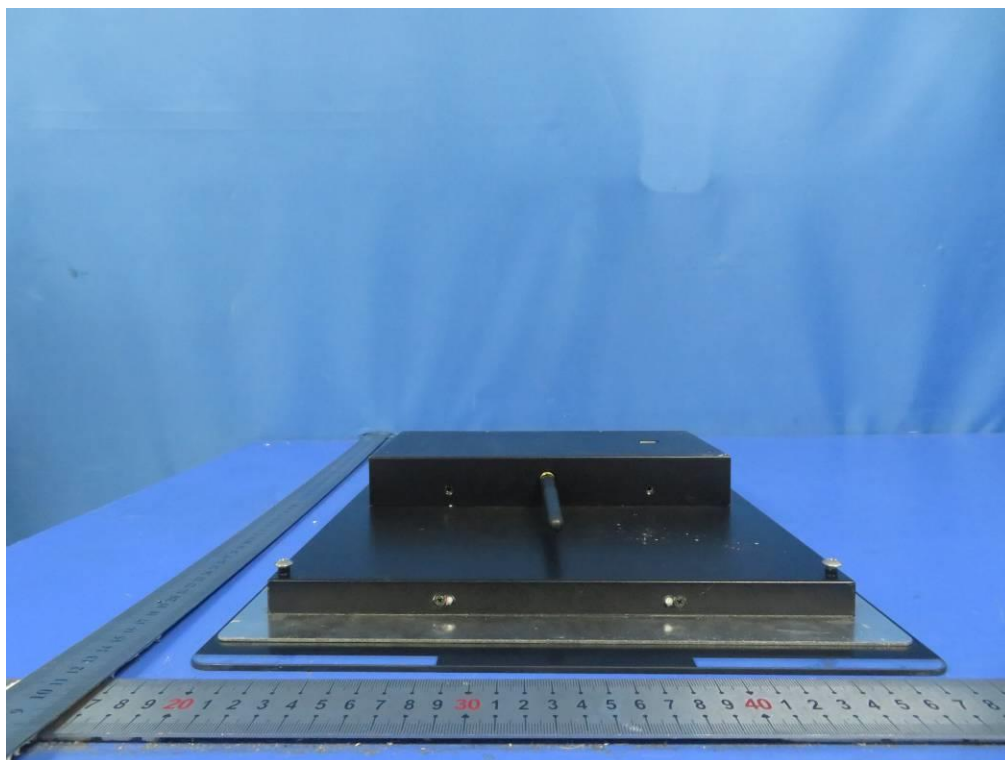


Fig.4

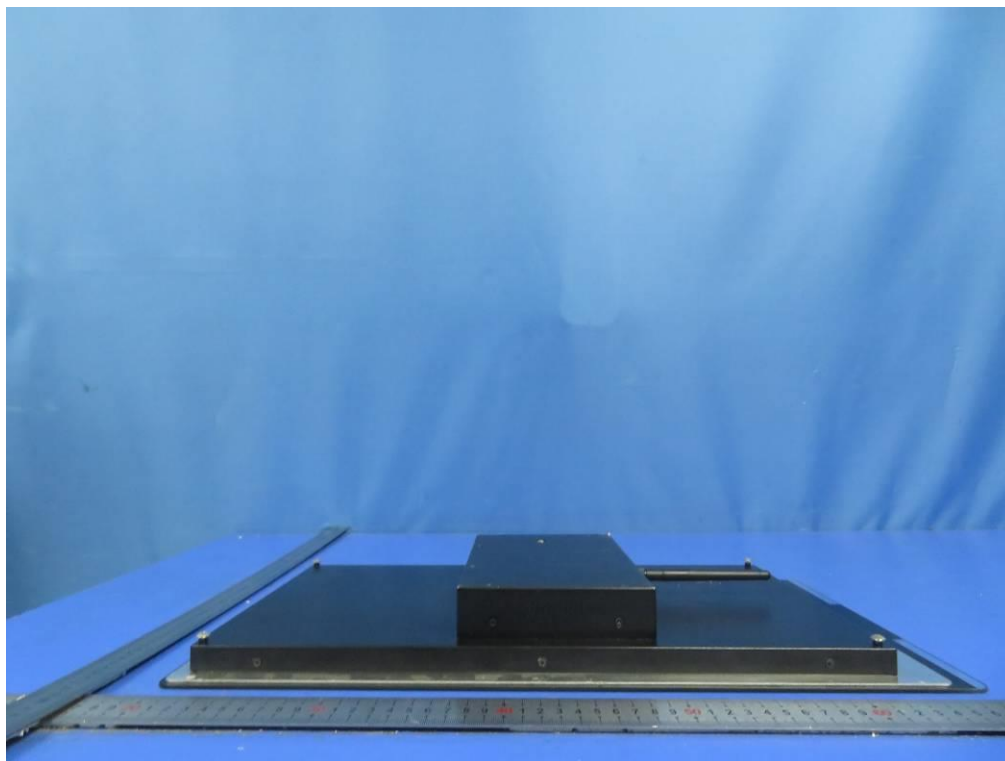


Fig.5

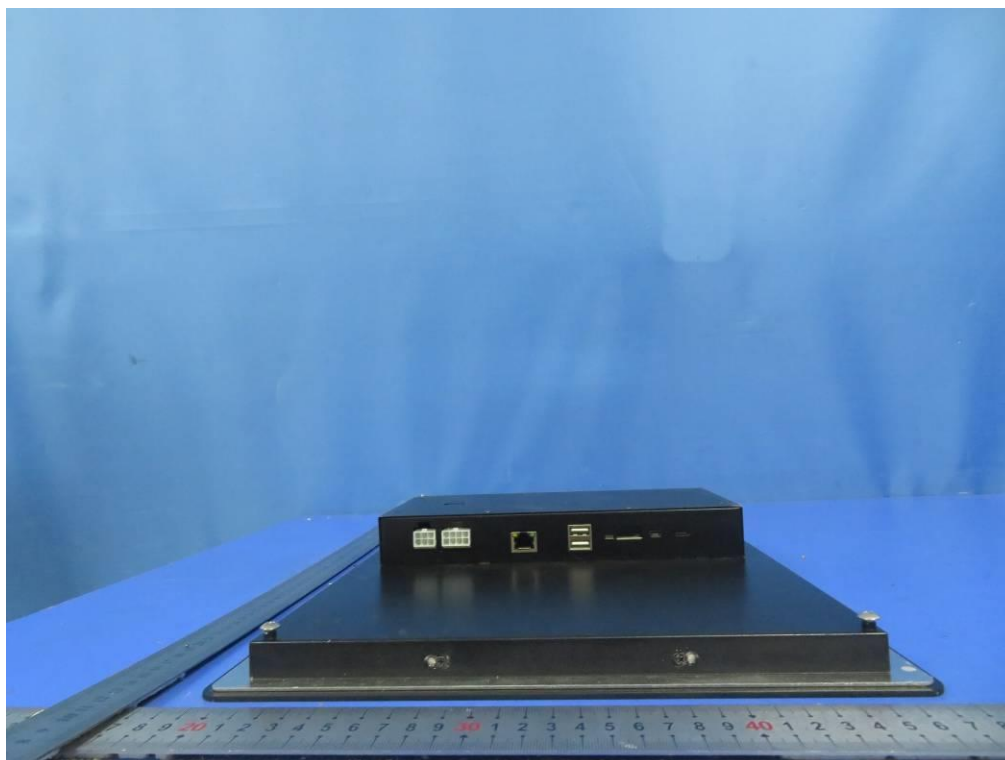


Fig.6

Interior Photos



Fig.7

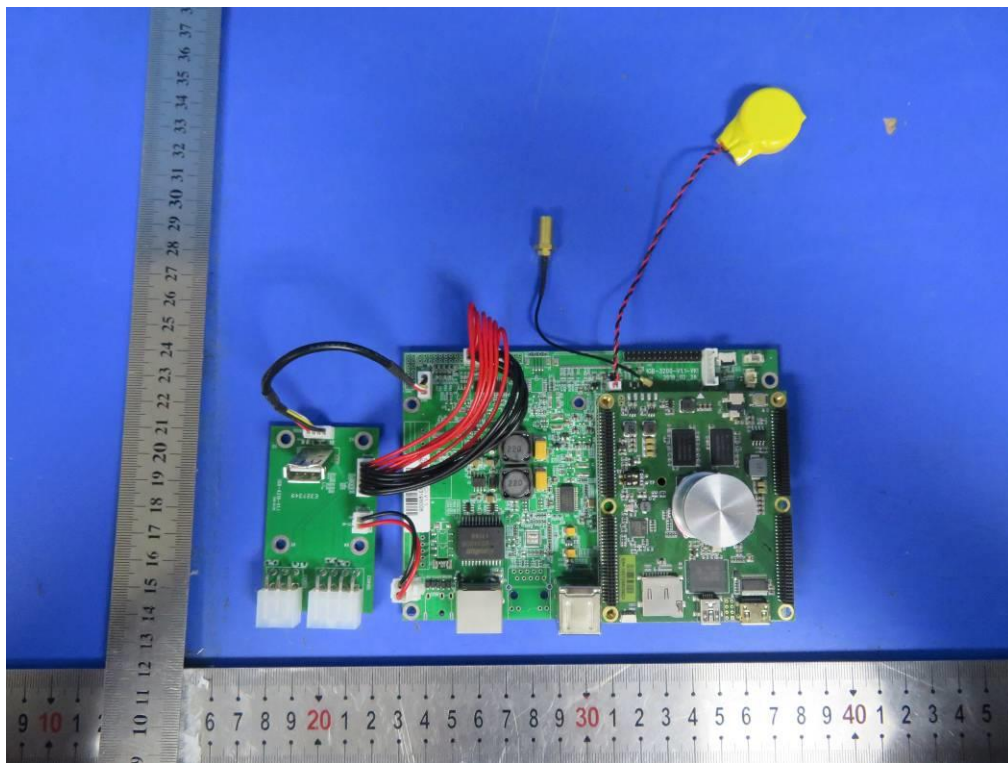


Fig.8

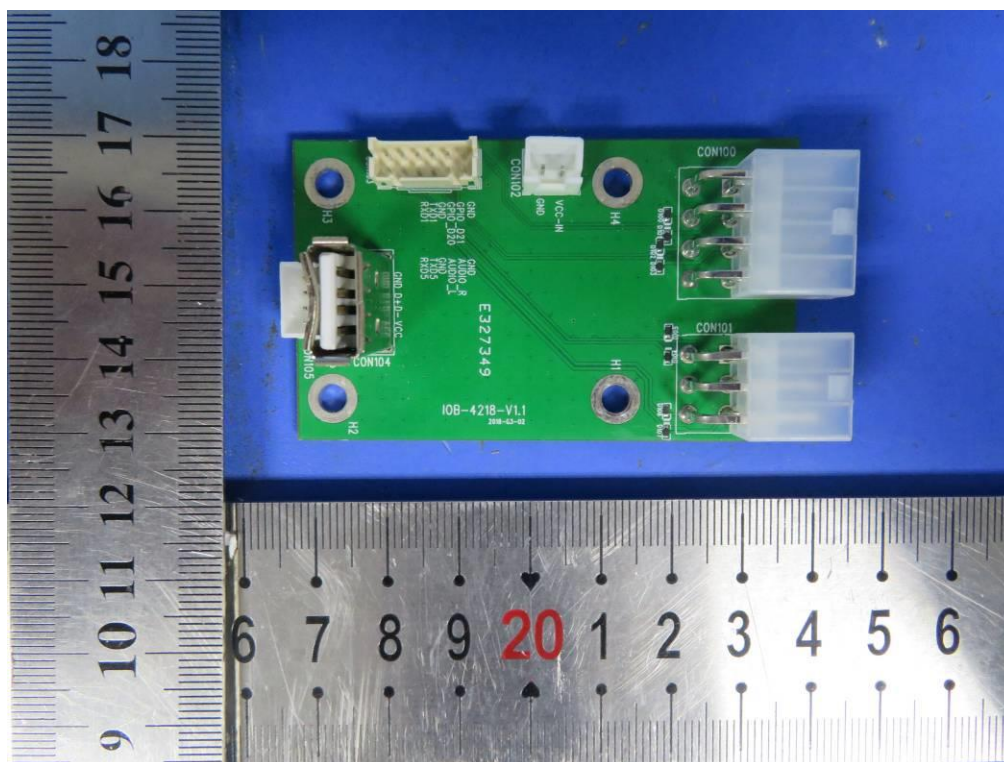


Fig.9

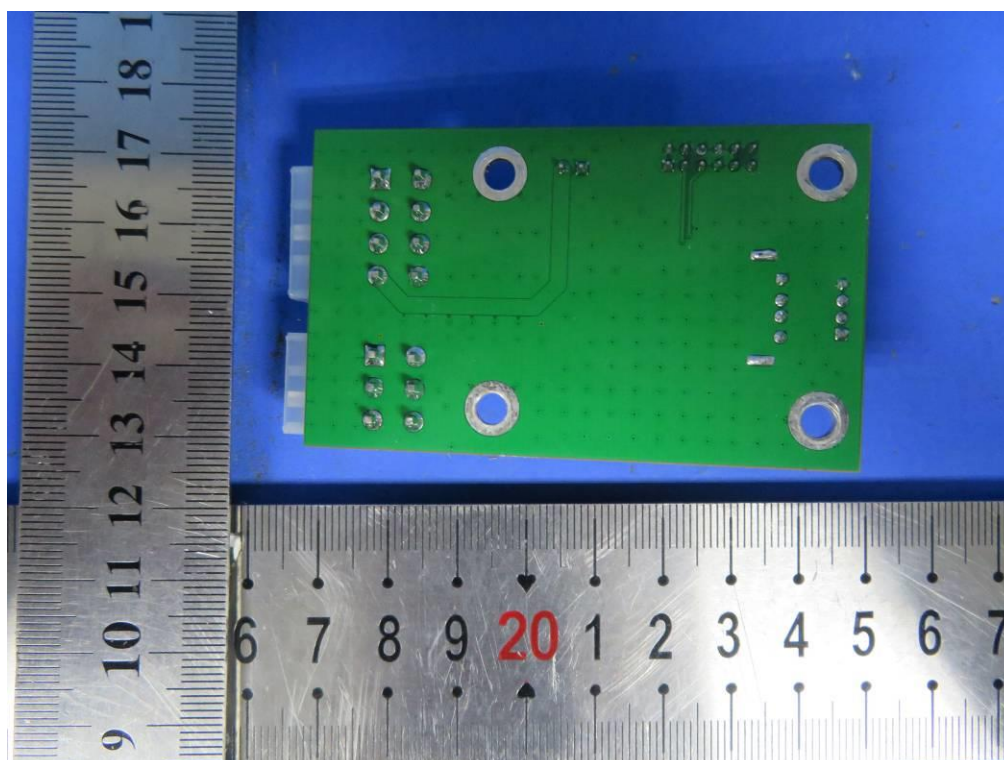


Fig.10

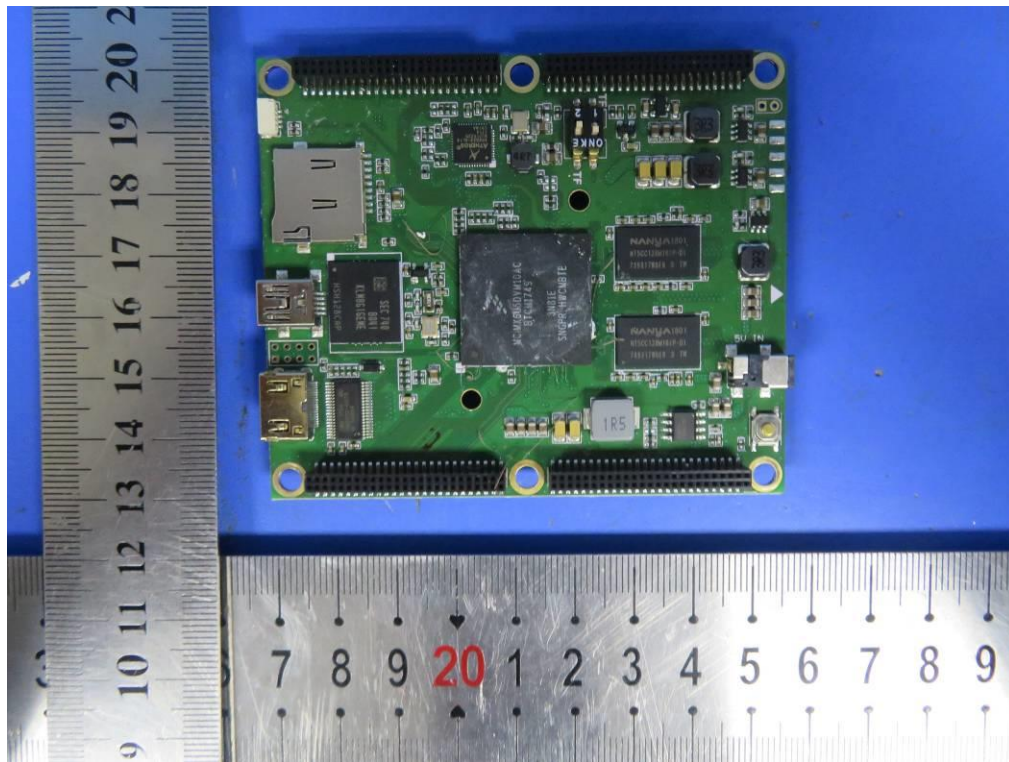


Fig.11

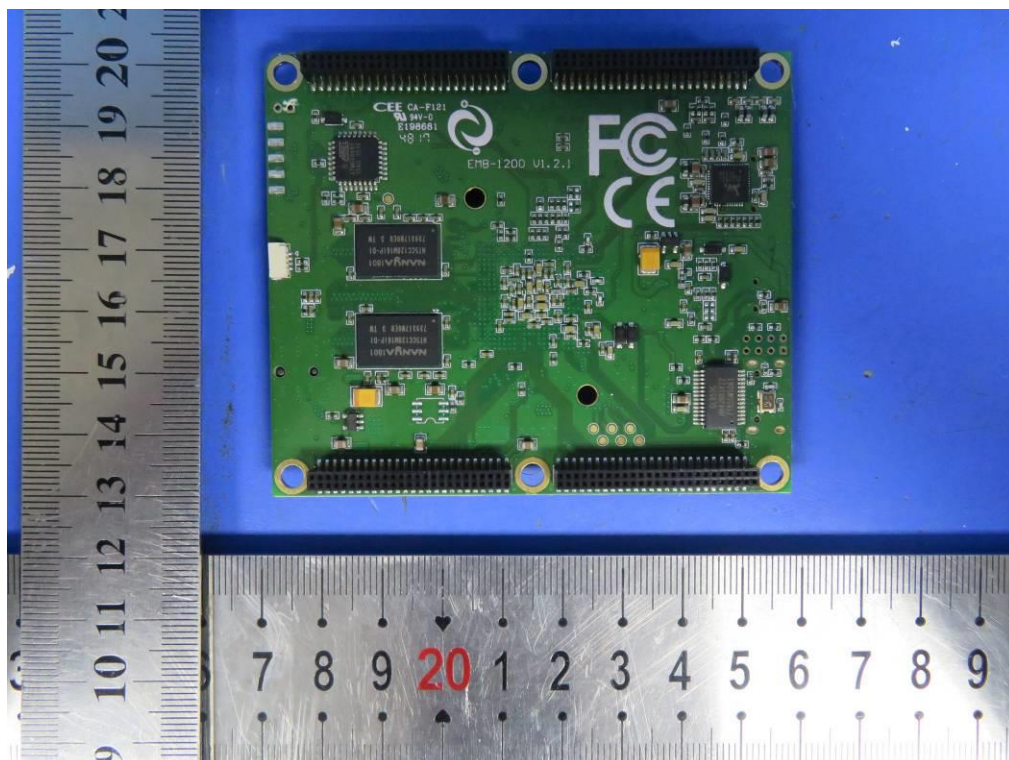


Fig.12

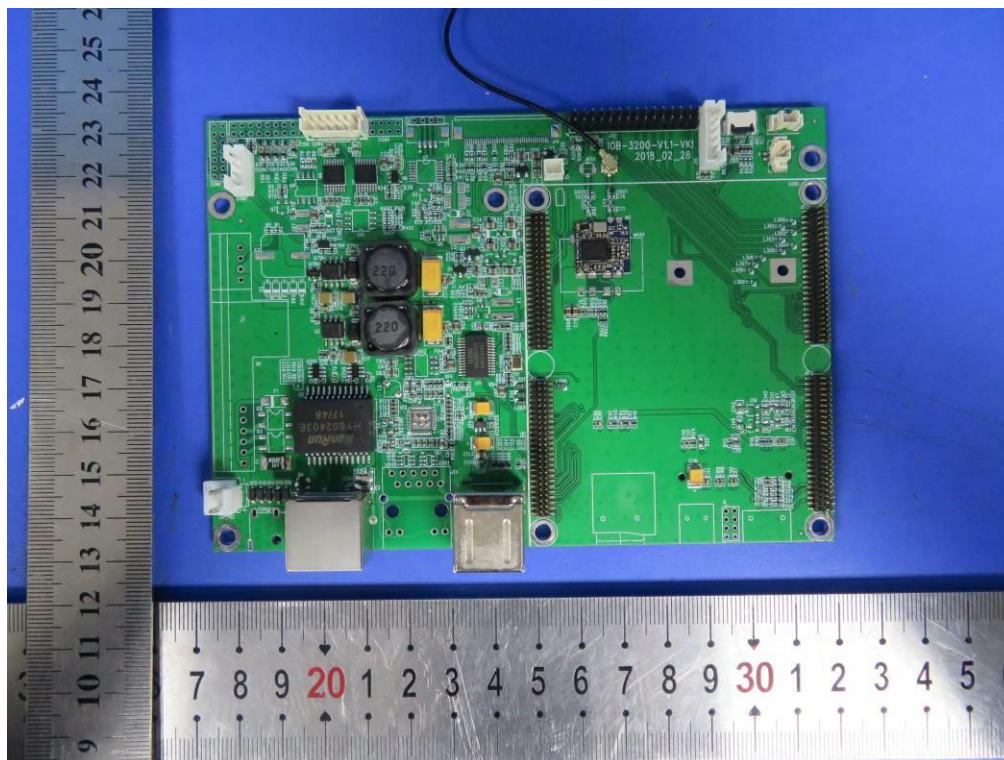


Fig.13

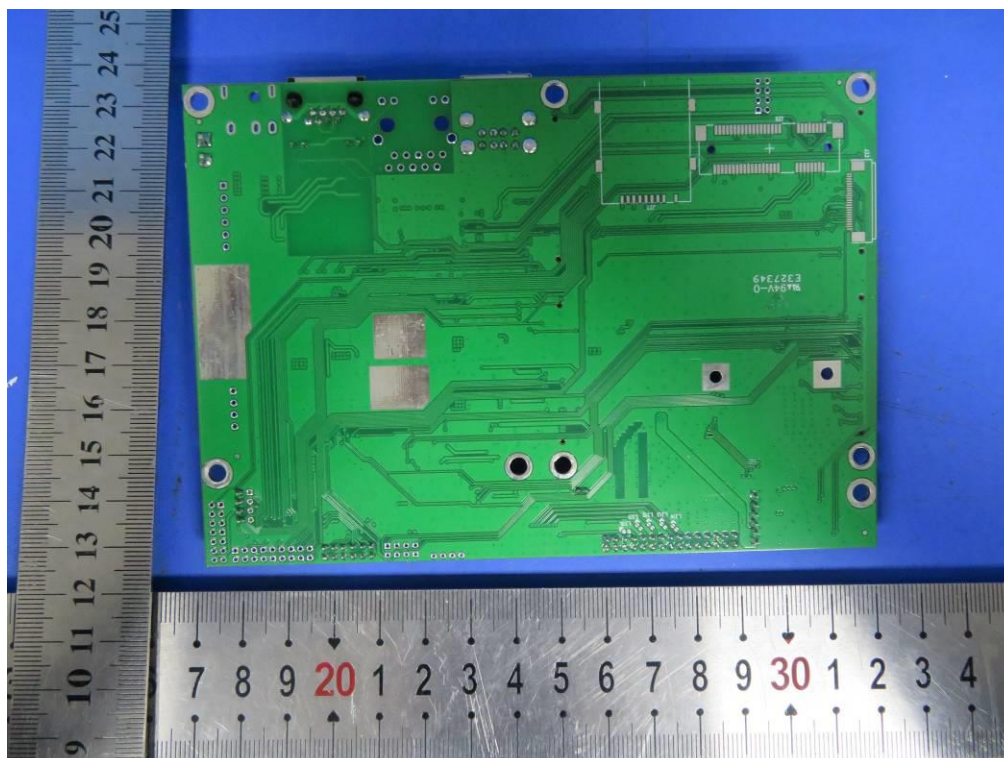


Fig.14

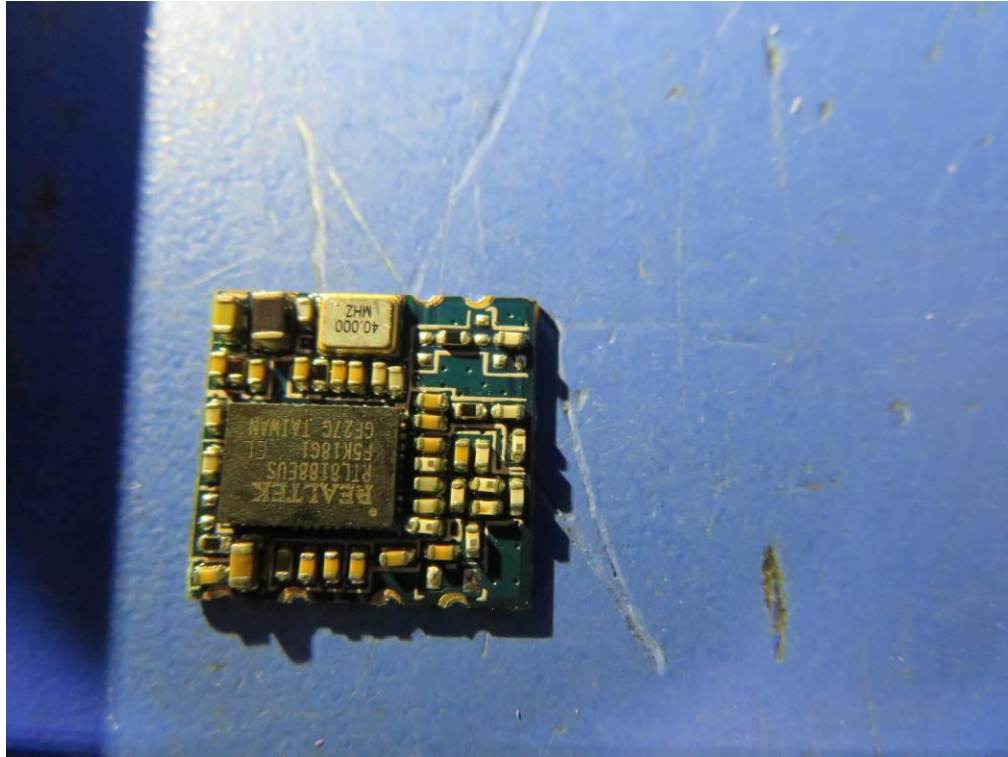


Fig.15

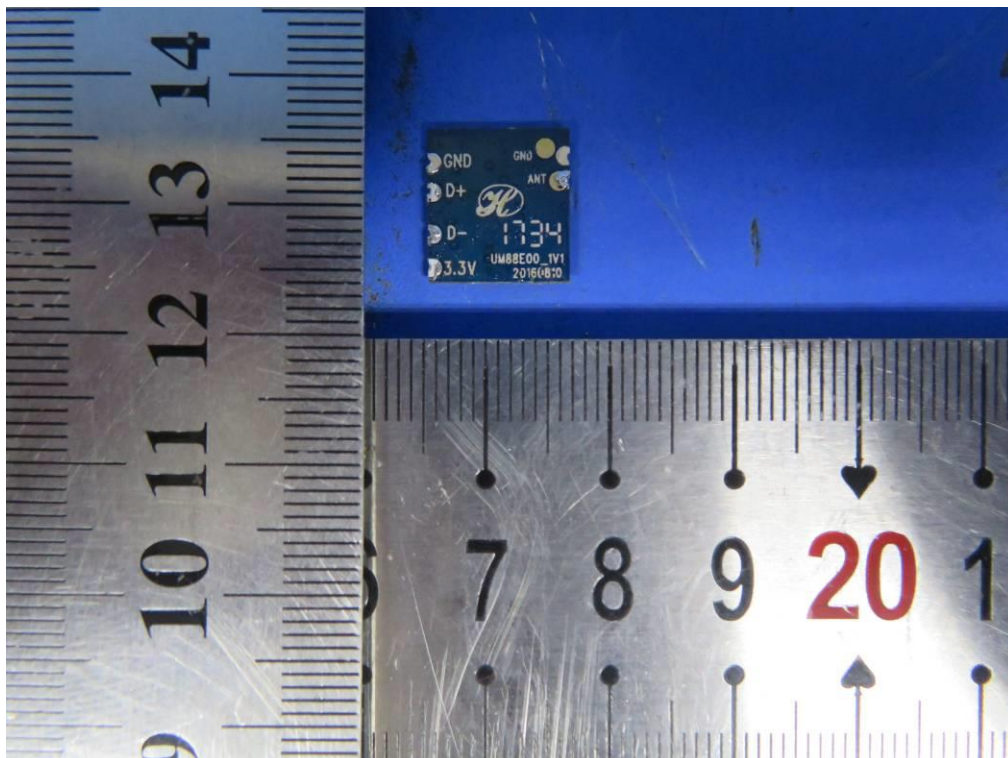


Fig.16

-----THE END OF REPORT-----