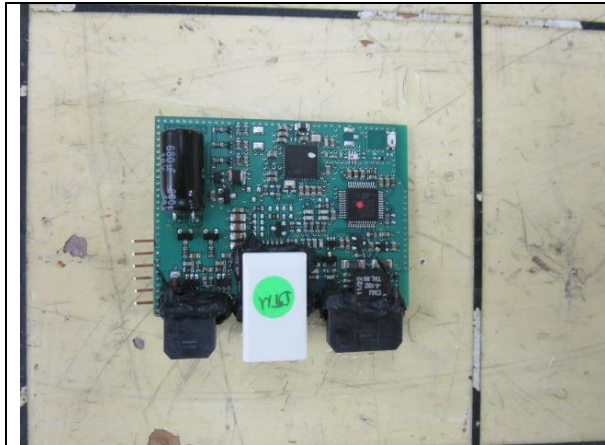


INTERNAL PHOTOS

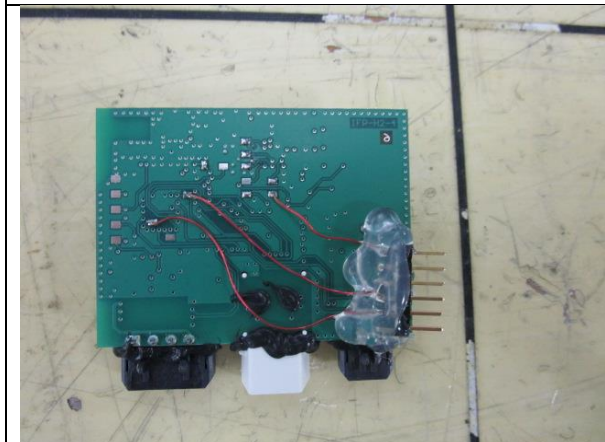
Company Name	The Chicago Faucet Company
Model #	AEQ-001JKNF
FCC ID #	2APTX-CFC05
IC #	31327-CFC05



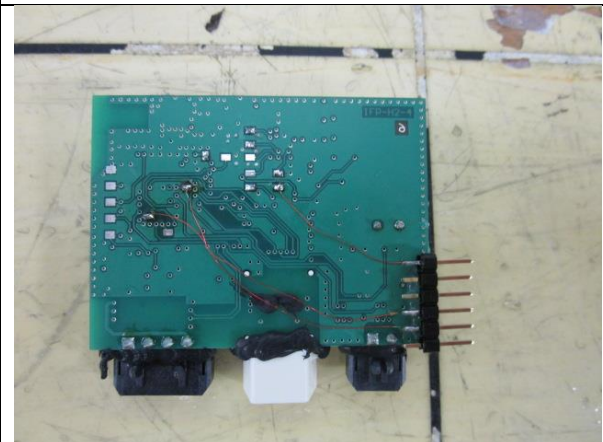
Radiated Unit Front



Conducted Unit Front



Radiated Unit Back



Conducted unit Back

L201 was replaced by R203 a 0-ohm resistor.

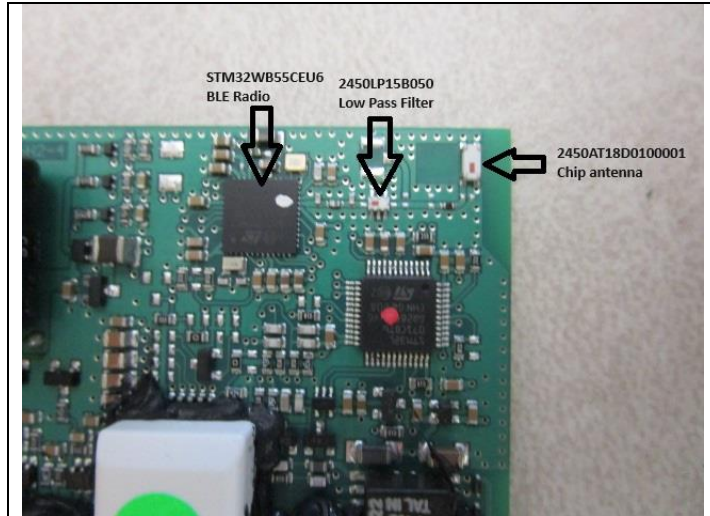
The Conducted unit was made by modifying a Radiated Unit.

Modifications for Conducted Unit: Moving R203 from chip antenna to unpopulated pad C211, Adding a u.fl connector the existing pad X201.

Modifications to both units: Programing headers were added to modules to connect to BLE test software via FTDI cable. Pad 2 (LPUART-TX) to Pin 5 (RXD), Pad 3 (LPUART-RX) to Pin 4 (TXD), Pad 206 (GND) to Pin 1 (GND).

INTERNAL PHOTOS

Company Name	The Chicago Faucet Company
Model #	AEQ-001JKNF
FCC ID #	2APTX-CFC05
IC #	31327-CFC05



RF annotated picture