

HyTronic® User Guide Installation Instructions

(continued)

**CHICAGO
FAUCETS**
Geberit Group

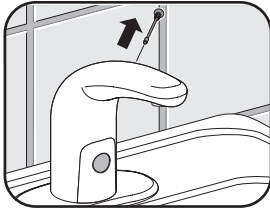
CARE AND MAINTENANCE INSTRUCTIONS

Replacing Battery

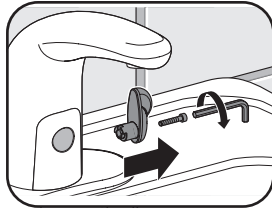
A traditional lavatory faucet is shown as an example. These instructions apply to all DC and EBPS models.

Prerequisites

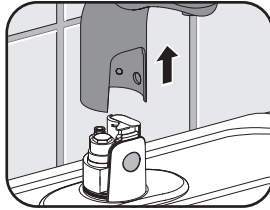
- Battery is low (LED is lit)
- New 6 V Lithium battery (CR-P2) is required
- NOTE: For EBPS units, low battery LED will only light when AC power is disconnected



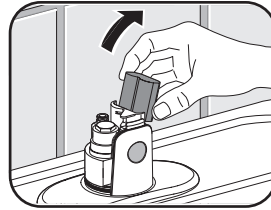
1. Remove shut-off screw



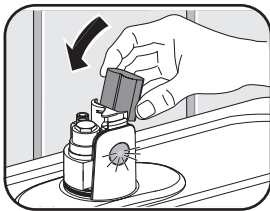
2. Remove mixer handle
(for faucets with external
mixer only)



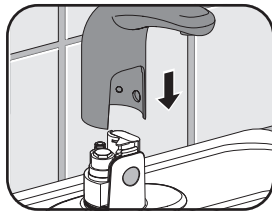
3. Remove housing
vertically



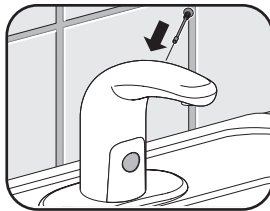
4. Remove used battery
from holder and recycle



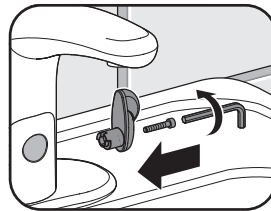
5. Insert new battery.
IMPORTANT: be sure
battery is fully seated.
LED will illuminate when
battery is properly
installed.



6. Mount housing vertically



7. Install shut-off screw

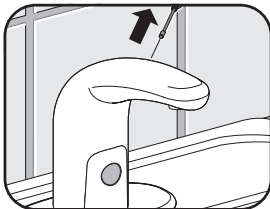


8. Install mixer handle
(for faucets with external
mixer only)

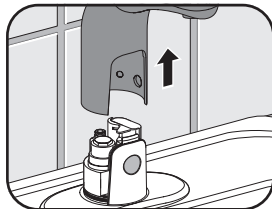
The battery is now
replaced.

Adjusting Water Temperature (Internal Mix)

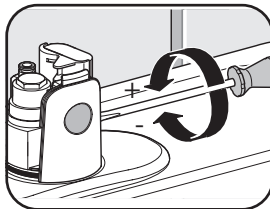
A traditional lavatory faucet is shown as an example. These instructions apply to all models with internal mixers.



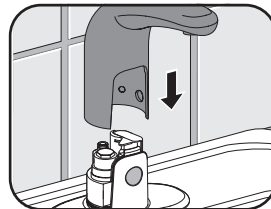
1. Remove shut-off screw



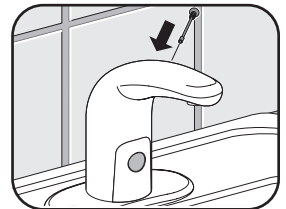
2. Remove housing
vertically



3. Adjust internal mixer with
screwdriver
Clockwise > warm
Counterclockwise < cold



4. Mount housing vertically



5. Install shut-off screw

The temperature is now
adjusted. Carefully test
the new temperature. If
necessary, adjust again.

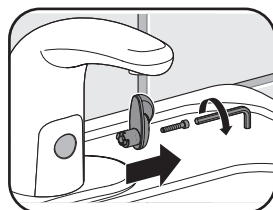
Adjusting Hot Water Limiter (External Mixer)

A traditional lavatory faucet is shown as an example. These instructions apply to all models with user adjustable temperature control. The proportion of hot water can be switched from approximately 85% to 95% (or reverse) depending upon inlet water pressures and temperatures. The default setting is 85%.

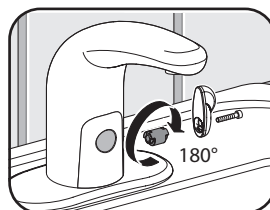
WARNING: Hot water
may burn your skin.

To avoid the risk
of scalding, use a
thermometer to check
water temperature.

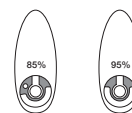
Avoid contact with the
water stream until the
water temperature has
been properly adjusted.



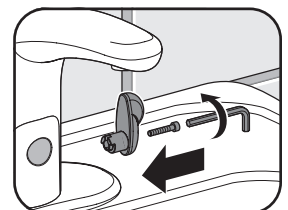
1. Remove mixer handle



2. Carefully pull out hot
water limiter from handle
(using pliers) and reverse
by 180°



Settings of hot water limiter
(View from placement in
mixer handle)



3. Mount mixer handle
The proportion of hot water
is now changed.

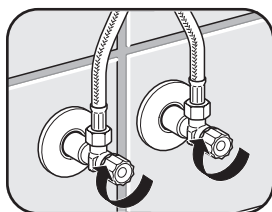
HyTronic® User Guide Installation Instructions

(continued)

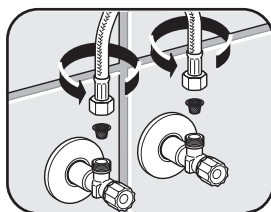
**CHICAGO
FAUCETS**

Geberit Group

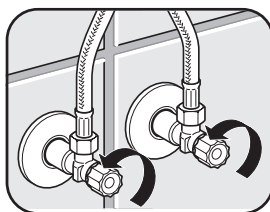
Cleaning or Replacing Inlet Filter



1. Close supply valves



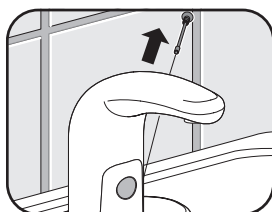
2. Disconnect braided hoses and carefully remove filter that is pressed into hose. Clean or replace filter.



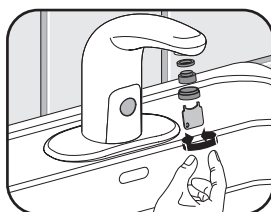
3. Connect braided hoses with filter to supply valves and open the valves.
Cold water > white label
Warm water > no label

The filter is now cleaned or replaced.

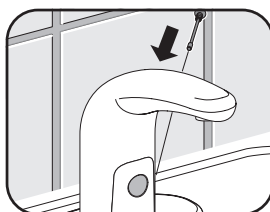
Cleaning or Replacing Aerator



1. Remove shut-off screw



2. Remove outlet with vandal resistant wrench supplied with the faucet. Clean or replace outlet, then reinstall.



3. Install shut-off screw

The outlet is now cleaned or replaced.

Commander Handheld Programming Unit

Use the Commander™ Handheld Programming Unit to change settings quickly and easily on your Chicago Faucets HyTronic® and E-Tronic® products. The Commander™ Handheld Programming Unit lets you program, maintain, and monitor our electronic faucets from the palm of your hand. Commander features a ruggedized housing, infrared communications, and touch-screen technology. Refer to the *Commander Quick Start Guide* to get started.



Faucet Adjustment Overview

Operating modes and sensor ranges can be adjusted with a manual operation through the infrared sensor. A traditional lavatory faucet is shown as an example. Faucet adjustment operations apply to all models. Alternatively, operating modes and sensor ranges can be adjusted with the Chicago Faucets Commander™ Handheld Programming Unit. For more information, visit chicagofaucets.com/commander.

Operating Modes	Description
Cleaning Mode	The faucet is inactive for 90 seconds.
Normal Mode	The faucet is activated if it senses a hand presence. This is the default operating mode of the faucet.
Metering Mode (10 s)	The faucet will shut off after 10 seconds regardless of hand presence detected.
Scrub Mode (60 s)	The faucet will shut off 60 seconds after the detection of the last hand presence.
Scrub Mode (180 s)	The faucet will shut off 180 seconds after the detection of the last hand presence.
Sensor Range Adjustment	Change the detection distance of the infrared sensor. The default sensor range is approximately 1" beyond the spout.
Reset	All settings will be reset to original factory settings.

In order to set the operating modes, the faucet needs to be placed into "Manual Setting" mode. At this time, operating modes can be changed within the next 30 minutes.

Care and Maintenance

All Chicago Faucets fittings are designed and engineered to meet or exceed industry performance standards. Care should be taken when cleaning this product. Do not use abrasive cleaners, chemicals or solvents as they can result in surface damage. Use mild soap with warm water for cleaning and protecting the surface of Chicago Faucets fittings.

For additional technical assistance, call 800/TEC-TRUE (800-832-8783) or visit our website at chicagofaucets.com.

TROUBLESHOOTING

No Water Flow	
Cause	Solution
Supply valves are closed	Open supply valves.
Aerator is blocked or dirty	Clean or replace outlet. See "Care and Maintenance".
Water line filter is dirty or blocked	Clean or replace filter. See "Care and Maintenance".
Braided hose is kinked	Eliminate braided hose kink.
No external water pressure	Check water pressure. Provide water pressure.
Battery is drained	Replace SSPS unit. Contact Chicago Faucets technical service or replace power adapter
Reverse green adapter insertion	Insert green adapter correctly.
Connector between SSPS and power adapter unplugged	Plug connector. (green plugs)
Corroded power adapter contacts	Clean contacts.
Connecting cable is kinked or broken	Replace defective parts. See "Replacement Parts" at chicagofaucets.com
Shut-off screw is missing or defective	Replace shut-off screw or defective See "Replacement Parts" at chicagofaucets.com
Solenoid valve inoperable	Replace solenoid valve. See "Replacement Parts" at chicagofaucets.com .
Faucet is in cleaning mode	Wait for cleaning mode to end (appr. 90 seconds)
Electronics module inoperable	Contact technical service or replace power adapter See "Replacement Parts" at chicagofaucets.com
Green Power adapter defective	Contact technical service or replace power adapter See "Replacement Parts" at chicagofaucets.com
Sensor distance is not adjusted properly	Remove and re-install shut-off screw. Do not disturb scanning procedure until water stops and LED is off.
Infrared window scratched or dirty	Clean window with smooth cloth
Interfering reflections from sink	Remove and re-install shut-off screw. Do not disturb scanning procedure until water stops and LED is off. Adjust upper and lower beam to compensate for reflections. (Commander™ Handheld Unit required. Go to www.chicagofaucets.com/commander for details)
Water Runs Continuously and Stops When Object Present	
Cause	Solution
Connector between electronics module and solenoid valve plug is reversed	Plug connector properly
Water Flows Although Shut-Off Screw Is Removed	
Cause	Solution
Electronics module inoperable	Contact technical service or replace power adapter See "Replacement Parts" at chicagofaucets.com
Water drops on infrared window	Clean window with smooth cloth

Water Runs Continuously	
Cause	Solution
Interfering object is in monitoring range	Remove object from monitoring area. Remove and re-install shut-off screw. Do not disturb scanning procedure until water stops and LED is off.
Defective electronics module	Replace electronics module. See "Replacement Parts" at chicagofaucets.com
Improper electronics module	Change mode or reset sensor. See "Care and Maintenance".
External water pressure is too high	Check external water pressure. Provide pressure between 20 - 125 psi.
Solenoid valve inoperable	Replace solenoid valve. See "Replacement Parts" at chicagofaucets.com .
Faucet Turns On By Itself	
Cause	Solution
Infrared window scratched or dirty	Clean window with smooth cloth
Faucet is influenced by room environment (mirror, stainless steel or glass sink, etc.)	Remove and re-install shut-off screw. Do not disturb scanning procedure until water stops and LED is off. Adjust upper and lower beam to compensate for reflections. (Commander™ Handheld Unit required. Go to www.chicagofaucets.com/commander for details)
Input line pressure fluctuates	Install appropriate line pressure regulators
Faucet Is Leaking Water	
Cause	Solution
Connections between housing and braided hose	Check O-rings. Replace damaged or missing O-rings.
Connection between braided hose and inlet supply are loose	Check rubber washers. Replace washers when damaged or missing.
Connection between valve body and solenoid valve is loose	Check O-rings. Replace damaged O-rings. Carefully re-install solenoid valve & do not over tighten.
Faucet drips, solenoid valve does not close	Clean or replace solenoid valve. See "Replacement Parts" at chicagofaucets.com .
Temperature Cannot Be Adjusted Properly	
Cause	Solution
Supply valves not fully opened.	Fully open supply valves.
Water line filter is dirty or blocked	Clean or replace filter. See "Care and Maintenance".
Braided hose is kinked	Eliminate braided hose kink.
Backflow preventer in faucet is blocked	Unblock backflow preventer
Temperature of hot or cold supply is too low	Check inlet temperature or inspect boiler.
Hot water temperature not sufficient	Reverse hot water limiter. See "Care and Maintenance"
Inlet hoses are reversed	Correct the connections.

CHICAGO FAUCETS LIMITED WARRANTY

TO WHOM DOES THIS WARRANTY APPLY? — The Company extends the following limited warranty to the original user only.
WHAT DOES THIS WARRANTY COVER AND HOW LONG DOES IT LAST?

This warranty covers the following Commercial Products:

LIFETIME FAUCET WARRANTY — The "Faucet," defined as any metal cast, forged, stamped or formed portion of the Product, not including electronic or moving parts or other products separately covered by this Limited Warranty or water restricting components or other components, is warranted against material manufacturing defects for the life of the Product.

FIVE YEAR FAUCET WARRANTY — Certain Products and portions of the Product are warranted against material manufacturing defects for a period of five (5) years from the date of Product purchase. Products warranted against material manufacturing defects for a period of five (5) years from the date of Product purchase are referred to by the product numbers 42X, 43X, 15XX and E-Tronic™ - 4X, 5X, 6X, 7X, 8X and 9X. All zinc die cast portions of Product are warranted against material manufacturing defects for a period of five (5) years from the date of Product purchase.

THREE YEAR ELECTRONICS WARRANTY — Electronic components, including the solenoid, are warranted for three (3) years from the date of installation.

FIVE YEAR CARTRIDGE WARRANTY — The "Cartridge", defined as the metal portion of any Product typically referred to by the product numbers containing 1-099, 1-100, 377X, 217X and 274X, excluding any rubber or plastic components, is warranted against material manufacturing defects for a period of five (5) years from the date of Product purchase. All Cartridges included in the Company's Single Control or Shower Products also are warranted against material manufacturing defects for a period of five (5) years from the date of Product purchase.

ONE YEAR FINISH WARRANTY – COMMERCIAL — For Products used in commercial applications, the finish of the Product is warranted against material manufacturing defects for a period of one (1) year from the date of Product purchase.

OTHER WARRANTIES — All other Products not covered above are warranted against material manufacturing defects for a period of one (1) year from the date of Product purchase.

Other restrictions and limitations apply. For complete warranty details, call Chicago Faucets Customer Service at 847-803-5000 or visit chicagofaucets.com.

The Chicago Faucet Company
 2100 South Clearwater Drive
 Des Plaines, IL 60018
 Phone: 847/803-5000
 Fax: 847/803-5454
 Technical: 800/832-8783
www.chicagofaucets.com