

Test Plot 1#: GSM 850_Head Left Cheek_Middle

DUT: smart phone; Type: ELUGA I8; Serial: 19071700113;

Communication System: Generic GSM; Frequency: 836.6 MHz; Duty Cycle: 1:8
 Medium parameters used: $f = 836.6 \text{ MHz}$; $\sigma = 0.882 \text{ S/m}$; $\epsilon_r = 41.787$; $\rho = 1000 \text{ kg/m}^3$;
 Phantom section: Left Section

DASY5 Configuration:

- Probe: EX3DV4 - SN7522; ConvF(9.46, 9.46, 9.46); Calibrated: 2018/11/2;
- Sensor-Surface: 4mm (Mechanical Surface Detection)
- Electronics: DAE4 SN1562; Calibrated: 2018/11/6
- Phantom: SAM-Twin V8.0 P1aP2a; Type: QD 000 P41 AA; Serial: 1962
- Measurement SW: DASY52, Version 52.10 (2);

Area Scan (71x91x1): Interpolated grid: $dx=1.500 \text{ mm}$, $dy=1.500 \text{ mm}$

Maximum value of SAR (interpolated) = 0.129 W/kg

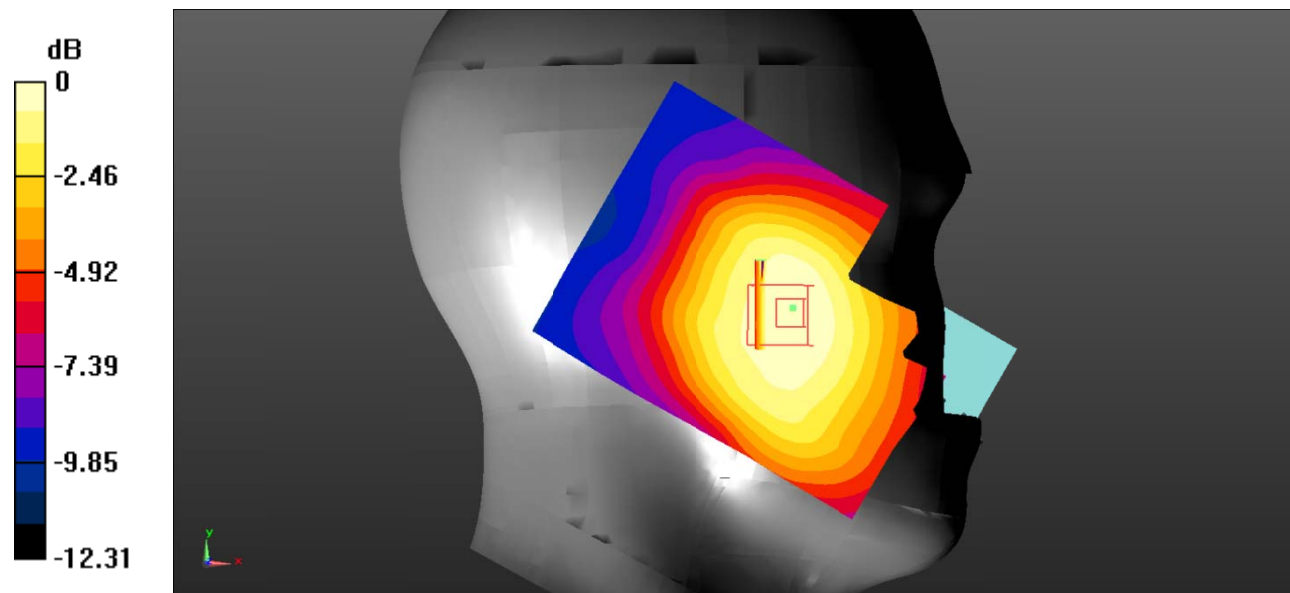
Zoom Scan (5x5x7)/Cube 0: Measurement grid: $dx=8\text{mm}$, $dy=8\text{mm}$, $dz=5\text{mm}$

Reference Value = 4.646 V/m; Power Drift = 0.65 dB

Peak SAR (extrapolated) = 0.147 W/kg

SAR(1 g) = 0.123 W/kg; SAR(10 g) = 0.097 W/kg

Maximum value of SAR (measured) = 0.130 W/kg



0 dB = 0.130 W/kg = -8.86 dBW/kg

Test Plot 2#: GSM 850_Head Left Tilt_Middle**DUT: smart phone; Type: ELUGA I8; Serial: 19071700113;**

Communication System: Generic GSM; Frequency: 836.6 MHz; Duty Cycle: 1:8

Medium parameters used: $f = 836.6$ MHz; $\sigma = 0.882$ S/m; $\epsilon_r = 41.787$; $\rho = 1000$ kg/m³ ;

Phantom section: Left Section

DASY5 Configuration:

- Probe: EX3DV4 - SN7522; ConvF(9.46, 9.46, 9.46); Calibrated: 2018/11/2;
- Sensor-Surface: 4mm (Mechanical Surface Detection)
- Electronics: DAE4 SN1562; Calibrated: 2018/11/6
- Phantom: SAM-Twin V8.0 P1aP2a; Type: QD 000 P41 AA; Serial: 1962
- Measurement SW: DASY52, Version 52.10 (2);

Area Scan (71x91x1): Interpolated grid: dx=1.500 mm, dy=1.500 mm

Maximum value of SAR (interpolated) = 0.0741 W/kg

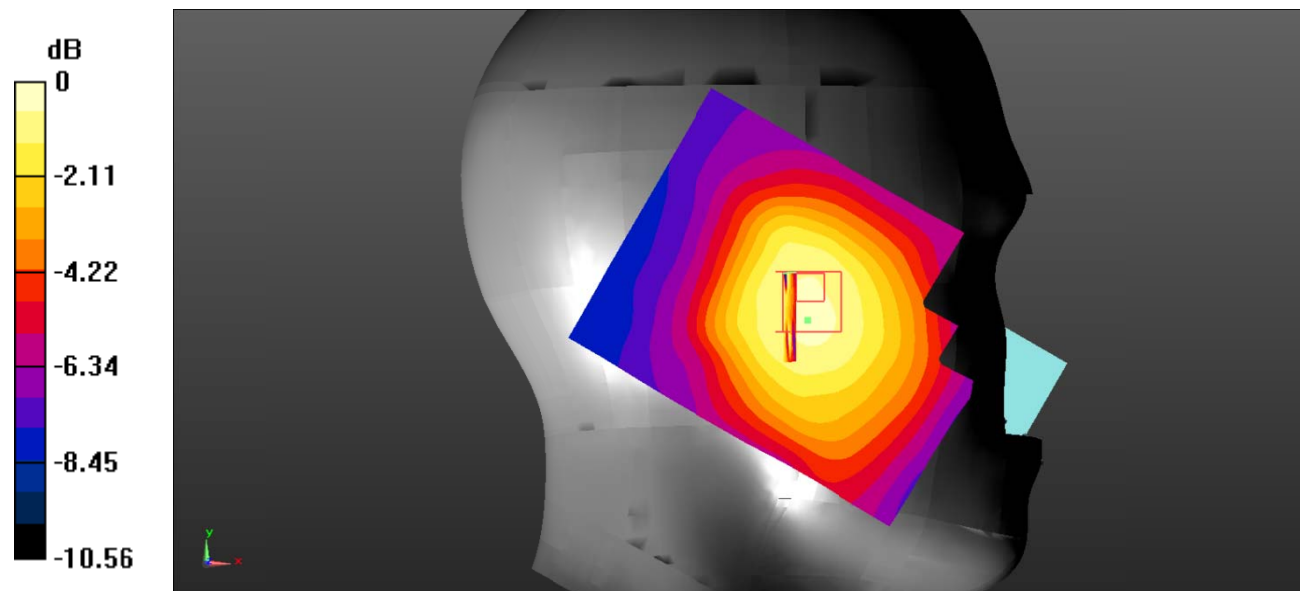
Zoom Scan (5x5x7)/Cube 0: Measurement grid: dx=8mm, dy=8mm, dz=5mm

Reference Value = 5.195 V/m; Power Drift = 0.54 dB

Peak SAR (extrapolated) = 0.140 W/kg

SAR(1 g) = 0.074 W/kg; SAR(10 g) = 0.052 W/kg

Maximum value of SAR (measured) = 0.0824 W/kg



0 dB = 0.0824 W/kg = -10.84 dBW/kg

Test Plot 3#: GSM 850_Head Right Cheek_Middle

DUT: smart phone; Type: ELUGA I8; Serial: 19071700113;

Communication System: Generic GSM; Frequency: 836.6 MHz; Duty Cycle: 1:8
 Medium parameters used: $f = 836.6 \text{ MHz}$; $\sigma = 0.882 \text{ S/m}$; $\epsilon_r = 41.787$; $\rho = 1000 \text{ kg/m}^3$;
 Phantom section: Right Section

DASY5 Configuration:

- Probe: EX3DV4 - SN7522; ConvF(9.46, 9.46, 9.46); Calibrated: 2018/11/2;
- Sensor-Surface: 4mm (Mechanical Surface Detection)
- Electronics: DAE4 SN1562; Calibrated: 2018/11/6
- Phantom: SAM-Twin V8.0 P1aP2a; Type: QD 000 P41 AA; Serial: 1962
- Measurement SW: DASY52, Version 52.10 (2);

Area Scan (71x91x1): Interpolated grid: $dx=1.500 \text{ mm}$, $dy=1.500 \text{ mm}$

Maximum value of SAR (interpolated) = 0.141 W/kg

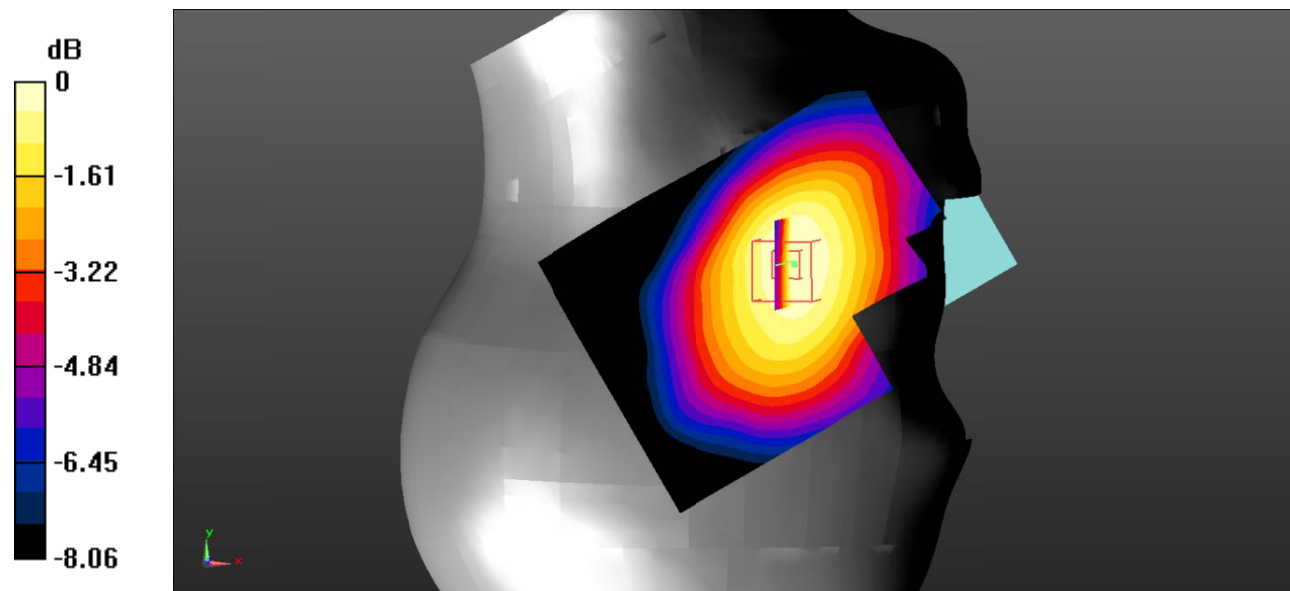
Zoom Scan (5x5x7)/Cube 0: Measurement grid: $dx=8\text{mm}$, $dy=8\text{mm}$, $dz=5\text{mm}$

Reference Value = 5.369 V/m; Power Drift = 0.21 dB

Peak SAR (extrapolated) = 0.166 W/kg

SAR(1 g) = 0.137 W/kg; SAR(10 g) = 0.106 W/kg

Maximum value of SAR (measured) = 0.142 W/kg



0 dB = 0.142 W/kg = -8.48 dBW/kg

Test Plot 4#: GSM 850_Head Right Tilt_Middle

DUT: smart phone; Type: ELUGA I8; Serial: 19071700113;

Communication System: Generic GSM; Frequency: 836.6 MHz; Duty Cycle: 1:8
 Medium parameters used: $f = 836.6 \text{ MHz}$; $\sigma = 0.882 \text{ S/m}$; $\epsilon_r = 41.787$; $\rho = 1000 \text{ kg/m}^3$;
 Phantom section: Right Section

DASY5 Configuration:

- Probe: EX3DV4 - SN7522; ConvF(9.46, 9.46, 9.46); Calibrated: 2018/11/2;
- Sensor-Surface: 4mm (Mechanical Surface Detection)
- Electronics: DAE4 SN1562; Calibrated: 2018/11/6
- Phantom: SAM-Twin V8.0 P1aP2a; Type: QD 000 P41 AA; Serial: 1962
- Measurement SW: DASY52, Version 52.10 (2);

Area Scan (71x91x1): Interpolated grid: $dx=1.500 \text{ mm}$, $dy=1.500 \text{ mm}$

Maximum value of SAR (interpolated) = 0.0696 W/kg

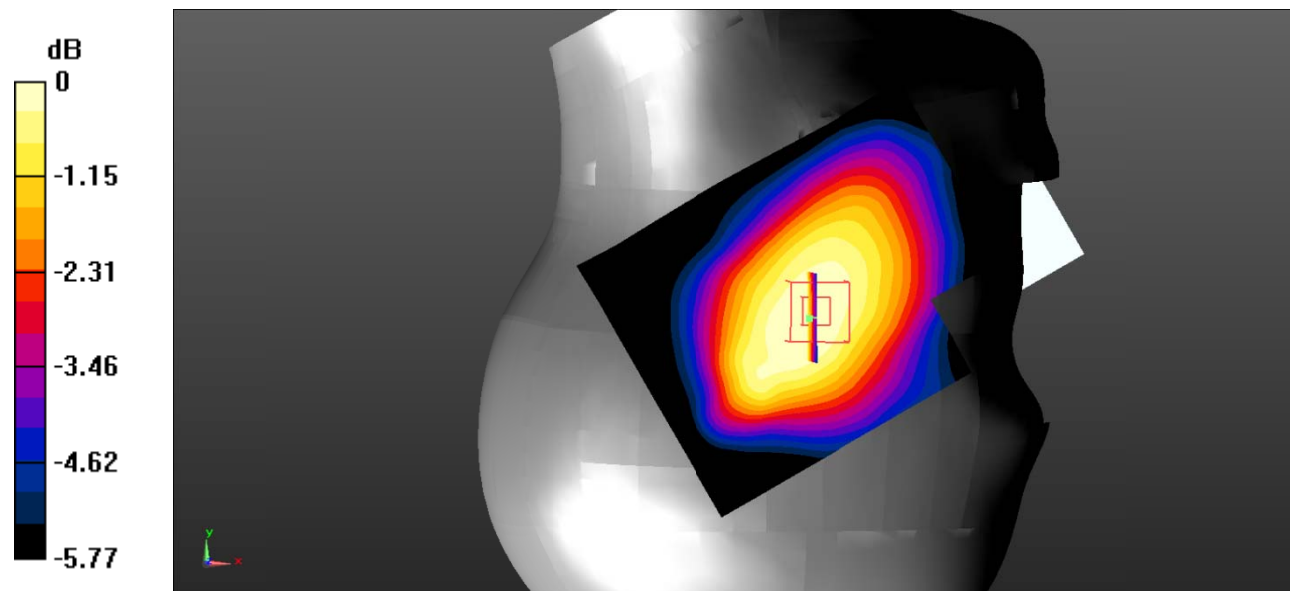
Zoom Scan (5x5x7)/Cube 0: Measurement grid: $dx=8\text{mm}$, $dy=8\text{mm}$, $dz=5\text{mm}$

Reference Value = 6.857 V/m; Power Drift = 0.46 dB

Peak SAR (extrapolated) = 0.0800 W/kg

SAR(1 g) = 0.066 W/kg; SAR(10 g) = 0.053 W/kg

Maximum value of SAR (measured) = 0.0683 W/kg



0 dB = 0.0683 W/kg = -11.66 dBW/kg

Test Plot 5#: GSM 850_Body Worn Back_Middle

DUT: smart phone; Type: ELUGA I8; Serial: 19071700113;

Communication System: Generic GSM; Frequency: 836.6 MHz; Duty Cycle: 1:8
 Medium parameters used: $f = 836.6 \text{ MHz}$; $\sigma = 0.882 \text{ S/m}$; $\epsilon_r = 41.787$; $\rho = 1000 \text{ kg/m}^3$;
 Phantom section: Flat Section

DASY5 Configuration:

- Probe: EX3DV4 - SN7522; ConvF(9.46, 9.46, 9.46); Calibrated: 2018/11/2;
- Sensor-Surface: 4mm (Mechanical Surface Detection)
- Electronics: DAE4 SN1562; Calibrated: 2018/11/6
- Phantom: SAM-Twin V8.0 P1aP2a; Type: QD 000 P41 AA; Serial: 1962
- Measurement SW: DASY52, Version 52.10 (2);

Area Scan (71x91x1): Interpolated grid: $dx=1.500 \text{ mm}$, $dy=1.500 \text{ mm}$

Maximum value of SAR (interpolated) = 0.185 W/kg

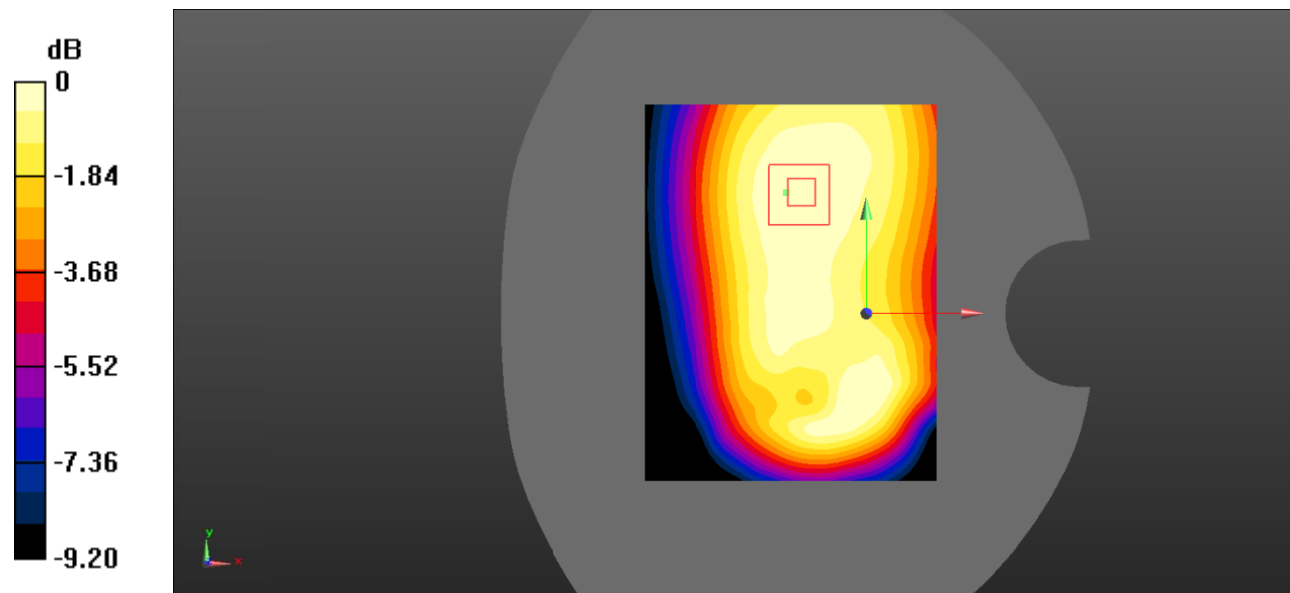
Zoom Scan (5x5x7)/Cube 0: Measurement grid: $dx=8\text{mm}$, $dy=8\text{mm}$, $dz=5\text{mm}$

Reference Value = 13.86 V/m; Power Drift = 0.05 dB

Peak SAR (extrapolated) = 0.225 W/kg

SAR(1 g) = 0.177 W/kg; SAR(10 g) = 0.132 W/kg

Maximum value of SAR (measured) = 0.184 W/kg



0 dB = 0.184 W/kg = -7.35 dBW/kg

Test Plot 6#: GSM 850_Body Back_Middle

DUT: smart phone; Type: ELUGA I8; Serial: 19071700113;

Communication System: Generic GPRS-3 slots; Frequency: 836.6 MHz; Duty Cycle: 1:2.66
 Medium parameters used: $f = 836.6 \text{ MHz}$; $\sigma = 0.882 \text{ S/m}$; $\epsilon_r = 41.787$; $\rho = 1000 \text{ kg/m}^3$;
 Phantom section: Flat Section

DASY5 Configuration:

- Probe: EX3DV4 - SN7522; ConvF(9.46, 9.46, 9.46); Calibrated: 2018/11/2;
- Sensor-Surface: 4mm (Mechanical Surface Detection)
- Electronics: DAE4 SN1562; Calibrated: 2018/11/6
- Phantom: SAM-Twin V8.0 P1aP2a; Type: QD 000 P41 AA; Serial: 1962
- Measurement SW: DASY52, Version 52.10 (2);

Area Scan (71x91x1): Interpolated grid: $dx=1.500 \text{ mm}$, $dy=1.500 \text{ mm}$

Maximum value of SAR (interpolated) = 0.255 W/kg

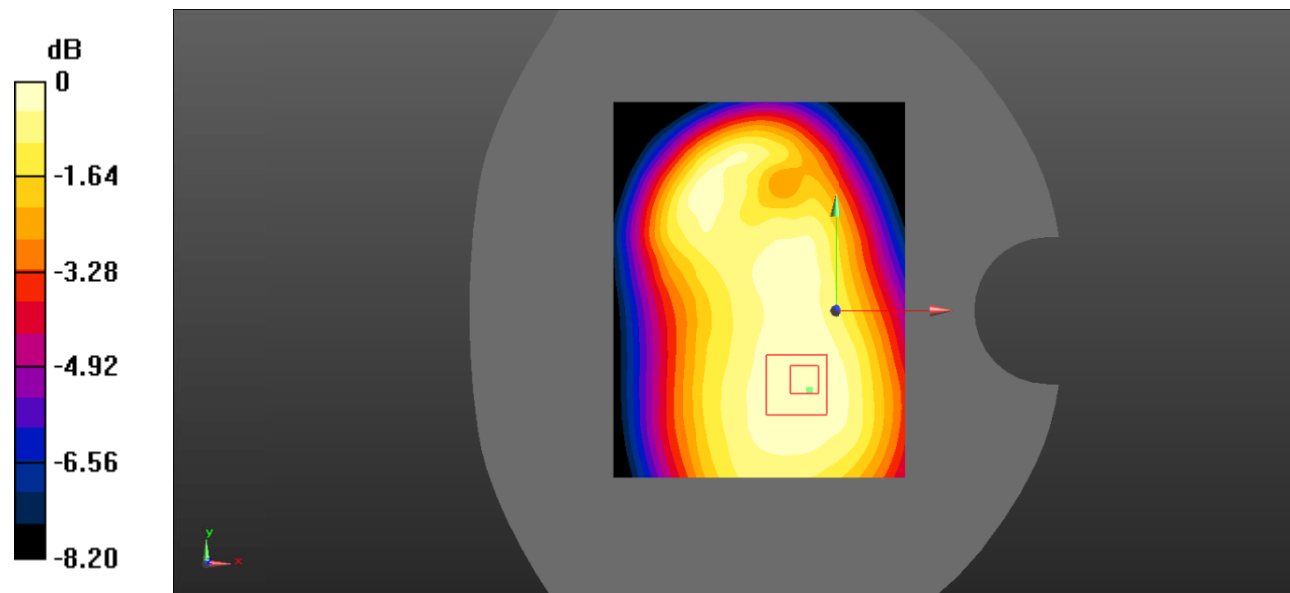
Zoom Scan (5x5x7)/Cube 0: Measurement grid: $dx=8\text{mm}$, $dy=8\text{mm}$, $dz=5\text{mm}$

Reference Value = 15.70 V/m; Power Drift = -0.01 dB

Peak SAR (extrapolated) = 0.309 W/kg

SAR(1 g) = 0.238 W/kg; SAR(10 g) = 0.179 W/kg

Maximum value of SAR (measured) = 0.250 W/kg



0 dB = 0.250 W/kg = -6.02 dBW/kg

Test Plot 7#: GSM 850_Body Left_Middle

DUT: smart phone; Type: ELUGA I8; Serial: 19071700113;

Communication System: Generic GPRS-3 slots; Frequency: 836.6 MHz; Duty Cycle: 1:2.66
 Medium parameters used: $f = 836.6 \text{ MHz}$; $\sigma = 0.882 \text{ S/m}$; $\epsilon_r = 41.787$; $\rho = 1000 \text{ kg/m}^3$;
 Phantom section: Flat Section

DASY5 Configuration:

- Probe: EX3DV4 - SN7522; ConvF(9.46, 9.46, 9.46); Calibrated: 2018/11/2;
- Sensor-Surface: 4mm (Mechanical Surface Detection)
- Electronics: DAE4 SN1562; Calibrated: 2018/11/6
- Phantom: SAM-Twin V8.0 P1aP2a; Type: QD 000 P41 AA; Serial: 1962
- Measurement SW: DASY52, Version 52.10 (2);

Area Scan (71x91x1): Interpolated grid: dx=1.500 mm, dy=1.500 mm

Maximum value of SAR (interpolated) = 0.0984 W/kg

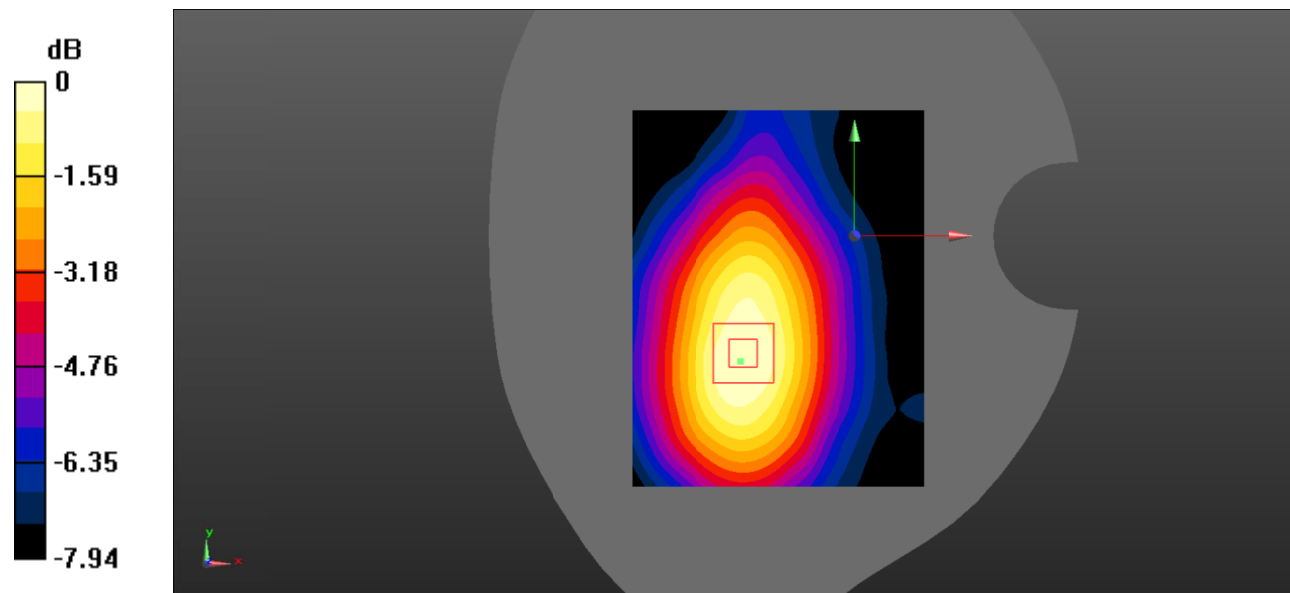
Zoom Scan (5x5x7)/Cube 0: Measurement grid: dx=8mm, dy=8mm, dz=5mm

Reference Value = 5.286 V/m; Power Drift = 2.64 dB

Peak SAR (extrapolated) = 0.126 W/kg

SAR(1 g) = 0.091 W/kg; SAR(10 g) = 0.064 W/kg

Maximum value of SAR (measured) = 0.0960 W/kg



0 dB = 0.0960 W/kg = -10.18 dBW/kg

Test Plot 8#: GSM 850_Body Right_Middle

DUT: smart phone; Type: ELUGA I8; Serial: 19071700113;

Communication System: Generic GPRS-3 slots; Frequency: 836.6 MHz; Duty Cycle: 1:2.66
 Medium parameters used: $f = 836.6 \text{ MHz}$; $\sigma = 0.882 \text{ S/m}$; $\epsilon_r = 41.787$; $\rho = 1000 \text{ kg/m}^3$;
 Phantom section: Flat Section

DASY5 Configuration:

- Probe: EX3DV4 - SN7522; ConvF(9.46, 9.46, 9.46); Calibrated: 2018/11/2;
- Sensor-Surface: 4mm (Mechanical Surface Detection)
- Electronics: DAE4 SN1562; Calibrated: 2018/11/6
- Phantom: SAM-Twin V8.0 P1aP2a; Type: QD 000 P41 AA; Serial: 1962
- Measurement SW: DASY52, Version 52.10 (2);

Area Scan (71x91x1): Interpolated grid: $dx=1.500 \text{ mm}$, $dy=1.500 \text{ mm}$

Maximum value of SAR (interpolated) = 0.175 W/kg

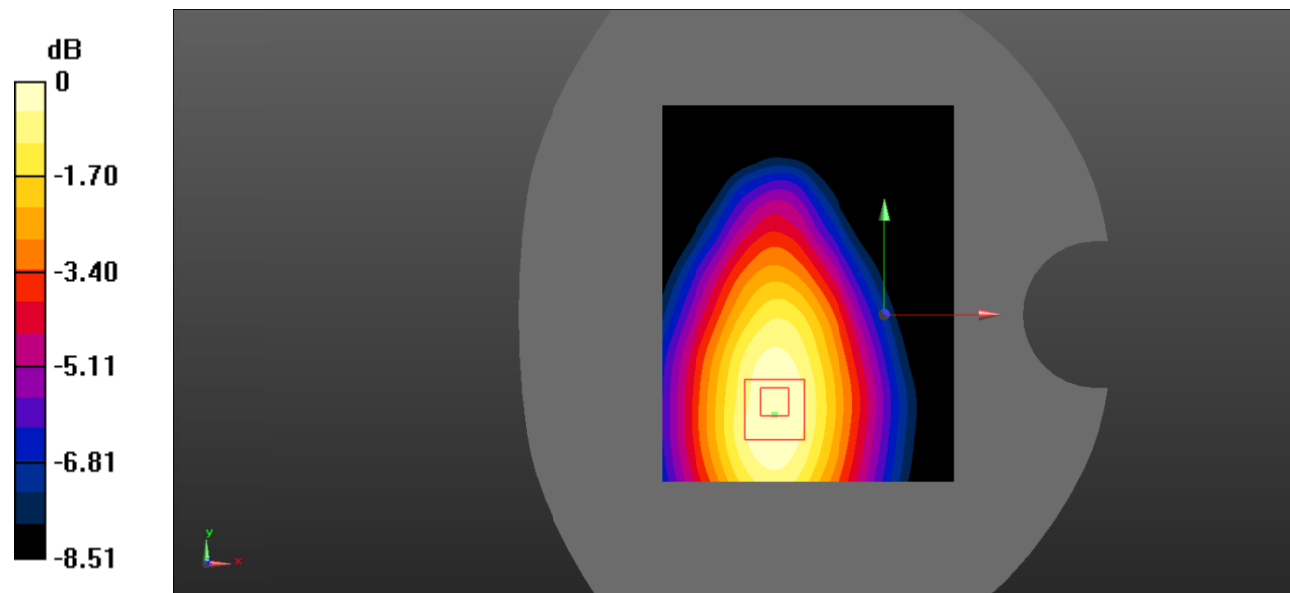
Zoom Scan (5x5x7)/Cube 0: Measurement grid: $dx=8\text{mm}$, $dy=8\text{mm}$, $dz=5\text{mm}$

Reference Value = 11.03 V/m ; Power Drift = -0.71 dB

Peak SAR (extrapolated) = 0.224 W/kg

SAR(1 g) = 0.161 W/kg ; SAR(10 g) = 0.112 W/kg

Maximum value of SAR (measured) = 0.173 W/kg



0 dB = $0.173 \text{ W/kg} = -7.62 \text{ dBW/kg}$

Test Plot 9#: GSM 850_Body Bottom_Middle

DUT: smart phone; Type: ELUGA I8; Serial: 19071700113;

Communication System: Generic GPRS-3 slots; Frequency: 836.6 MHz; Duty Cycle: 1:2.66
 Medium parameters used: $f = 836.6 \text{ MHz}$; $\sigma = 0.882 \text{ S/m}$; $\epsilon_r = 41.787$; $\rho = 1000 \text{ kg/m}^3$;
 Phantom section: Flat Section

DASY5 Configuration:

- Probe: EX3DV4 - SN7522; ConvF(9.46, 9.46, 9.46); Calibrated: 2018/11/2;
- Sensor-Surface: 4mm (Mechanical Surface Detection)
- Electronics: DAE4 SN1562; Calibrated: 2018/11/6
- Phantom: SAM-Twin V8.0 P1aP2a; Type: QD 000 P41 AA; Serial: 1962
- Measurement SW: DASY52, Version 52.10 (2);

Area Scan (71x91x1): Interpolated grid: dx=1.500 mm, dy=1.500 mm

Maximum value of SAR (interpolated) = 0.0952 W/kg

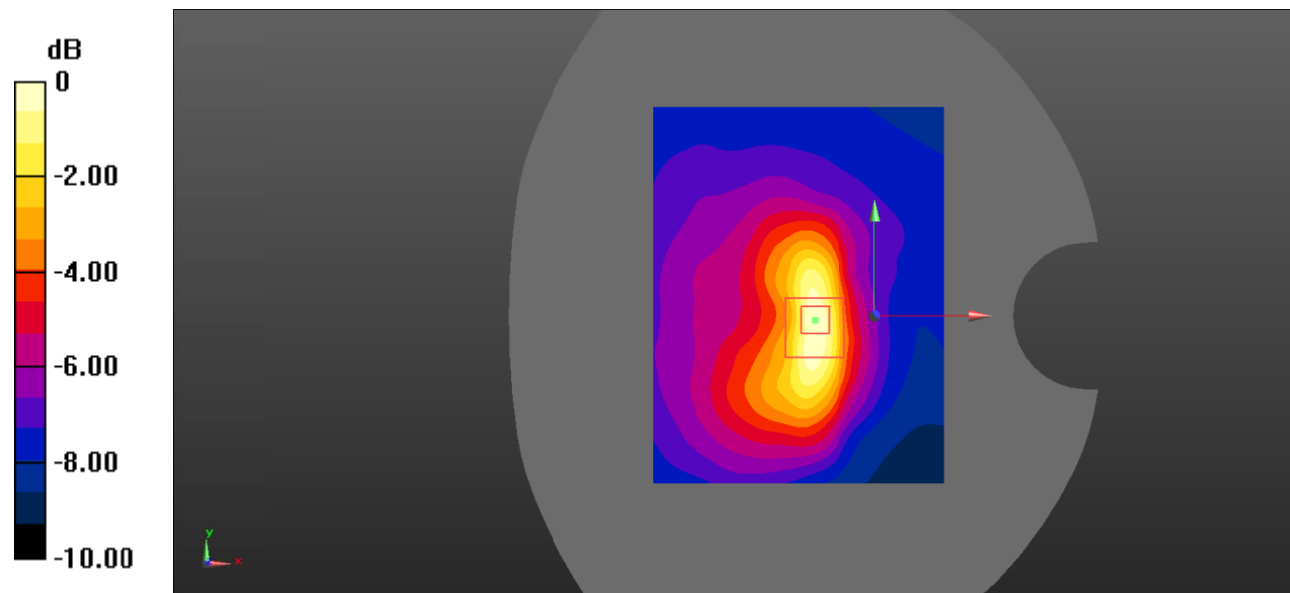
Zoom Scan (5x5x7)/Cube 0: Measurement grid: dx=8mm, dy=8mm, dz=5mm

Reference Value = 10.55 V/m; Power Drift = -0.66 dB

Peak SAR (extrapolated) = 0.137 W/kg

SAR(1 g) = 0.084 W/kg; SAR(10 g) = 0.048 W/kg

Maximum value of SAR (measured) = 0.0958 W/kg



0 dB = 0.0958 W/kg = -10.19 dBW/kg

Test Plot 10#: PCS 1900_Head Left Cheek_Middle

DUT: smart phone; Type: ELUGA I8; Serial: 19071700113;

Communication System: Generic GSM; Frequency: 1880 MHz; Duty Cycle: 1:8
 Medium parameters used: $f = 1880 \text{ MHz}$; $\sigma = 1.376 \text{ S/m}$; $\epsilon_r = 40.71$; $\rho = 1000 \text{ kg/m}^3$;
 Phantom section: Left Section

DASY5 Configuration:

- Probe: EX3DV4 - SN7522; ConvF(7.91, 7.91, 7.91); Calibrated: 2018/11/2;
- Sensor-Surface: 4mm (Mechanical Surface Detection)
- Electronics: DAE4 SN1562; Calibrated: 2018/11/6
- Phantom: SAM-Twin V8.0 P1aP2a; Type: QD 000 P41 AA; Serial: 1962
- Measurement SW: DASY52, Version 52.10 (2);

Area Scan (71x91x1): Interpolated grid: $dx=1.500 \text{ mm}$, $dy=1.500 \text{ mm}$

Maximum value of SAR (interpolated) = 0.314 W/kg

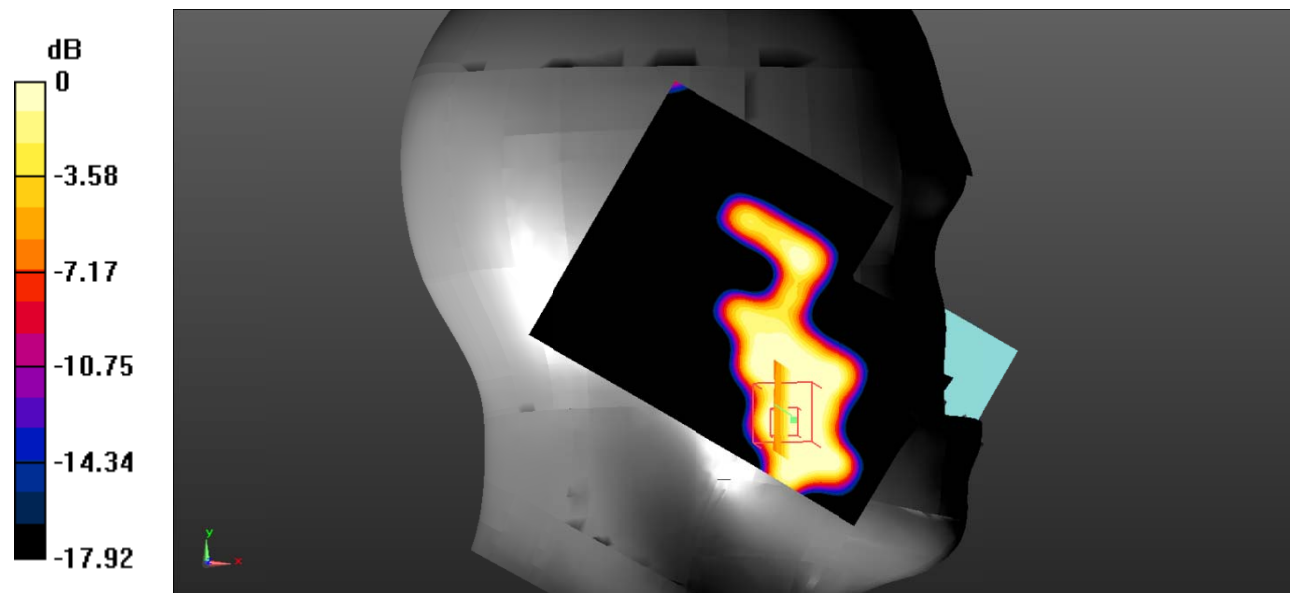
Zoom Scan (5x5x7)/Cube 0: Measurement grid: $dx=8\text{mm}$, $dy=8\text{mm}$, $dz=5\text{mm}$

Reference Value = 5.549 V/m; Power Drift = -0.22 dB

Peak SAR (extrapolated) = 0.280 W/kg

SAR(1 g) = 0.118 W/kg; SAR(10 g) = 0.057 W/kg

Maximum value of SAR (measured) = 0.124 W/kg



0 dB = 0.124 W/kg = -9.07 dBW/kg

Test Plot 11#: PCS 1900_Head Left Tilt_Middle

DUT: smart phone; Type: ELUGA I8; Serial: 19071700113;

Communication System: Generic GSM; Frequency: 1880 MHz;Duty Cycle: 1:8
 Medium parameters used: $f = 1880 \text{ MHz}$; $\sigma = 1.376 \text{ S/m}$; $\epsilon_r = 40.71$; $\rho = 1000 \text{ kg/m}^3$;
 Phantom section: Left Section

DASY5 Configuration:

- Probe: EX3DV4 - SN7522; ConvF(7.91, 7.91, 7.91); Calibrated: 2018/11/2;
- Sensor-Surface: 4mm (Mechanical Surface Detection)
- Electronics: DAE4 SN1562;Calibrated: 2018/11/6
- Phantom: SAM-Twin V8.0 P1aP2a; Type: QD 000 P41 AA; Serial: 1962
- Measurement SW: DASY52, Version 52.10 (2);

Area Scan (71x91x1): Interpolated grid: $dx=1.500 \text{ mm}$, $dy=1.500 \text{ mm}$

Maximum value of SAR (interpolated) = 0.0877 W/kg

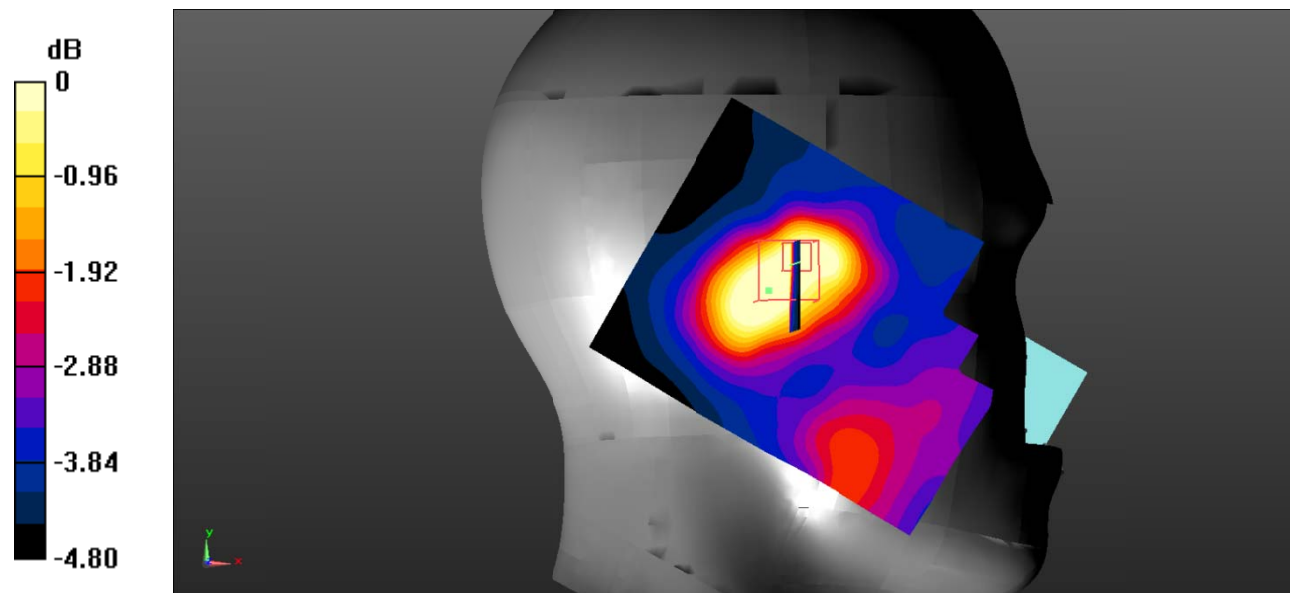
Zoom Scan (5x5x7)/Cube 0: Measurement grid: $dx=8\text{mm}$, $dy=8\text{mm}$, $dz=5\text{mm}$

Reference Value = 5.729 V/m; Power Drift = 0.13 dB

Peak SAR (extrapolated) = 0.119 W/kg

SAR(1 g) = 0.070 W/kg; SAR(10 g) = 0.048 W/kg

Maximum value of SAR (measured) = 0.0729 W/kg



0 dB = 0.0729 W/kg = -11.37 dBW/kg

Test Plot 12#: PCS 1900_Head Right Cheek_Middle

DUT: smart phone; Type: ELUGA I8; Serial: 19071700113;

Communication System: Generic GSM; Frequency: 1880 MHz; Duty Cycle: 1:8
 Medium parameters used: $f = 1880 \text{ MHz}$; $\sigma = 1.376 \text{ S/m}$; $\epsilon_r = 40.71$; $\rho = 1000 \text{ kg/m}^3$;
 Phantom section: Right Section

DASY5 Configuration:

- Probe: EX3DV4 - SN7522; ConvF(7.91, 7.91, 7.91); Calibrated: 2018/11/2;
- Sensor-Surface: 4mm (Mechanical Surface Detection)
- Electronics: DAE4 SN1562; Calibrated: 2018/11/6
- Phantom: SAM-Twin V8.0 P1aP2a; Type: QD 000 P41 AA; Serial: 1962
- Measurement SW: DASY52, Version 52.10 (2);

Area Scan (71x91x1): Interpolated grid: $dx=1.500 \text{ mm}$, $dy=1.500 \text{ mm}$

Maximum value of SAR (interpolated) = 0.0874 W/kg

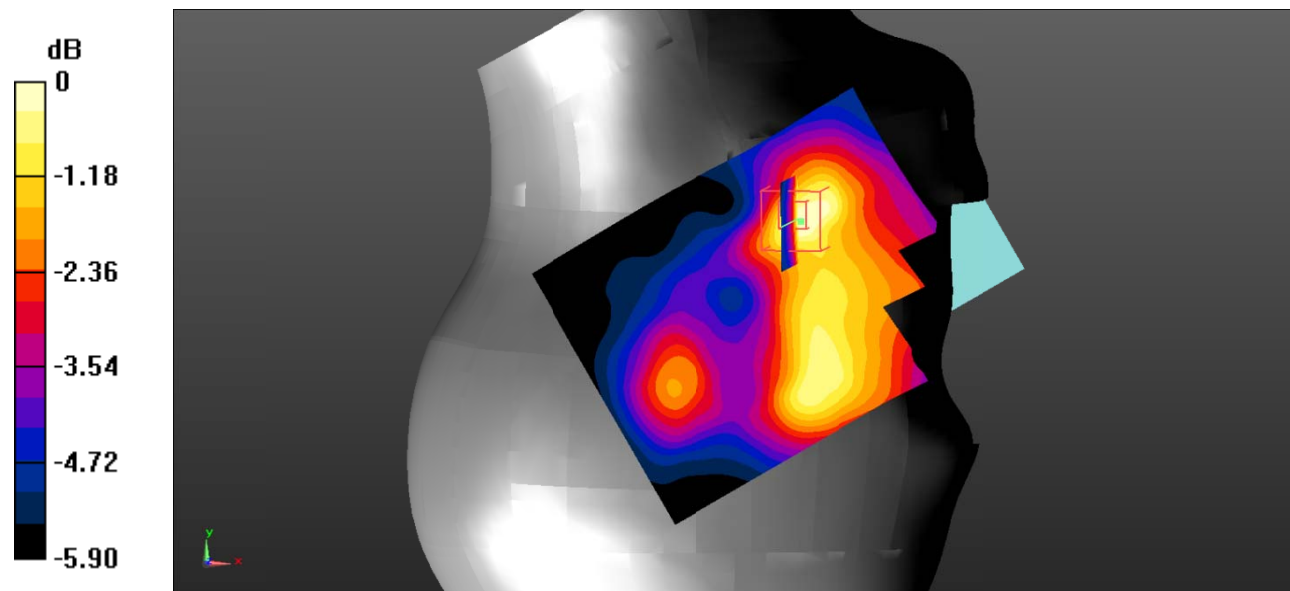
Zoom Scan (5x5x7)/Cube 0: Measurement grid: $dx=8\text{mm}$, $dy=8\text{mm}$, $dz=5\text{mm}$

Reference Value = 7.020 V/m ; Power Drift = -2.13 dB

Peak SAR (extrapolated) = 0.143 W/kg

SAR(1 g) = 0.082 W/kg ; SAR(10 g) = 0.056 W/kg

Maximum value of SAR (measured) = 0.0851 W/kg



0 dB = 0.0851 W/kg = -10.70 dBW/kg

Test Plot 13#: PCS 1900_Head Right Tilt_Middle

DUT: smart phone; Type: ELUGA I8; Serial: 19071700113;

Communication System: Generic GSM; Frequency: 1880 MHz; Duty Cycle: 1:8
 Medium parameters used: $f = 1880 \text{ MHz}$; $\sigma = 1.376 \text{ S/m}$; $\epsilon_r = 40.71$; $\rho = 1000 \text{ kg/m}^3$;
 Phantom section: Right Section

DASY5 Configuration:

- Probe: EX3DV4 - SN7522; ConvF(7.91, 7.91, 7.91); Calibrated: 2018/11/2;
- Sensor-Surface: 4mm (Mechanical Surface Detection)
- Electronics: DAE4 SN1562; Calibrated: 2018/11/6
- Phantom: SAM-Twin V8.0 P1aP2a; Type: QD 000 P41 AA; Serial: 1962
- Measurement SW: DASY52, Version 52.10 (2);

Area Scan (71x91x1): Interpolated grid: $dx=1.500 \text{ mm}$, $dy=1.500 \text{ mm}$

Maximum value of SAR (interpolated) = 0.0969 W/kg

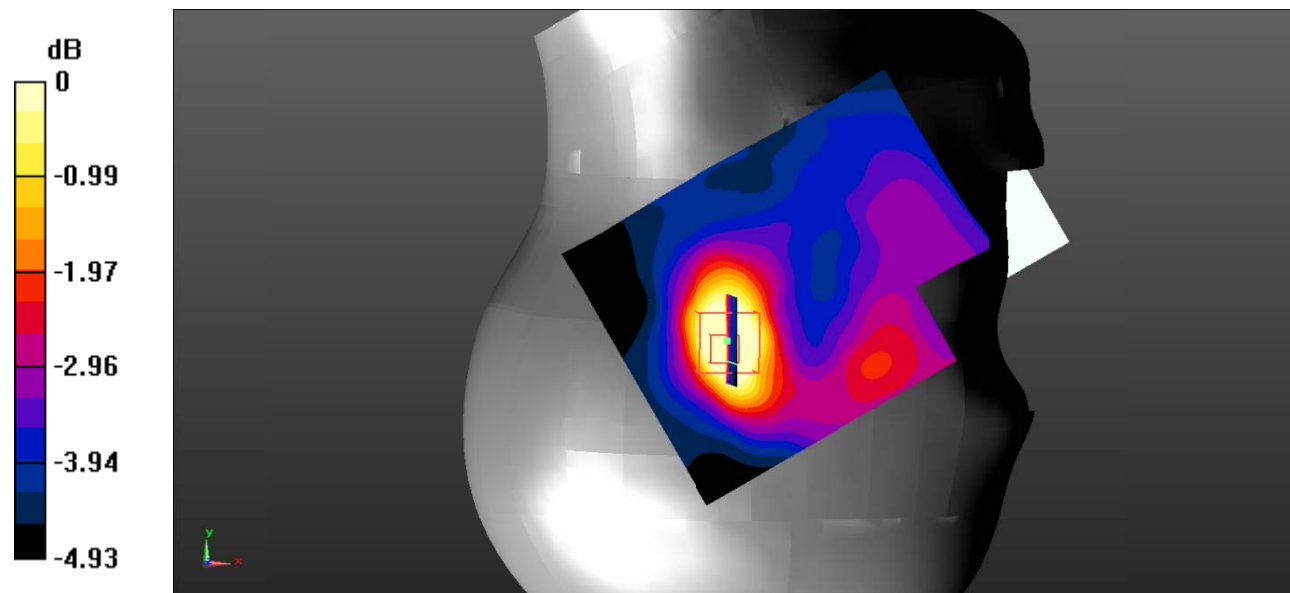
Zoom Scan (5x5x7)/Cube 0: Measurement grid: $dx=8\text{mm}$, $dy=8\text{mm}$, $dz=5\text{mm}$

Reference Value = 7.483 V/m ; Power Drift = -0.62 dB

Peak SAR (extrapolated) = 0.144 W/kg

SAR(1 g) = 0.070 W/kg ; SAR(10 g) = 0.045 W/kg

Maximum value of SAR (measured) = 0.0707 W/kg



0 dB = 0.0707 W/kg = -11.51 dBW/kg

Test Plot 14#: PCS 1900_Body Worn Back_Middle

DUT: smart phone; Type: ELUGA I8; Serial: 19071700113;

Communication System: Generic GSM; Frequency: 1880 MHz; Duty Cycle: 1:8
 Medium parameters used: $f = 1880 \text{ MHz}$; $\sigma = 1.376 \text{ S/m}$; $\epsilon_r = 40.71$; $\rho = 1000 \text{ kg/m}^3$;
 Phantom section: Flat Section

DASY5 Configuration:

- Probe: EX3DV4 - SN7522; ConvF(7.91, 7.91, 7.91); Calibrated: 2018/11/2;
- Sensor-Surface: 4mm (Mechanical Surface Detection)
- Electronics: DAE4 SN1562; Calibrated: 2018/11/6
- Phantom: SAM-Twin V8.0 P1aP2a; Type: QD 000 P41 AA; Serial: 1962
- Measurement SW: DASY52, Version 52.10 (2);

Area Scan (71x91x1): Interpolated grid: $dx=1.500 \text{ mm}$, $dy=1.500 \text{ mm}$

Maximum value of SAR (interpolated) = 0.431 W/kg

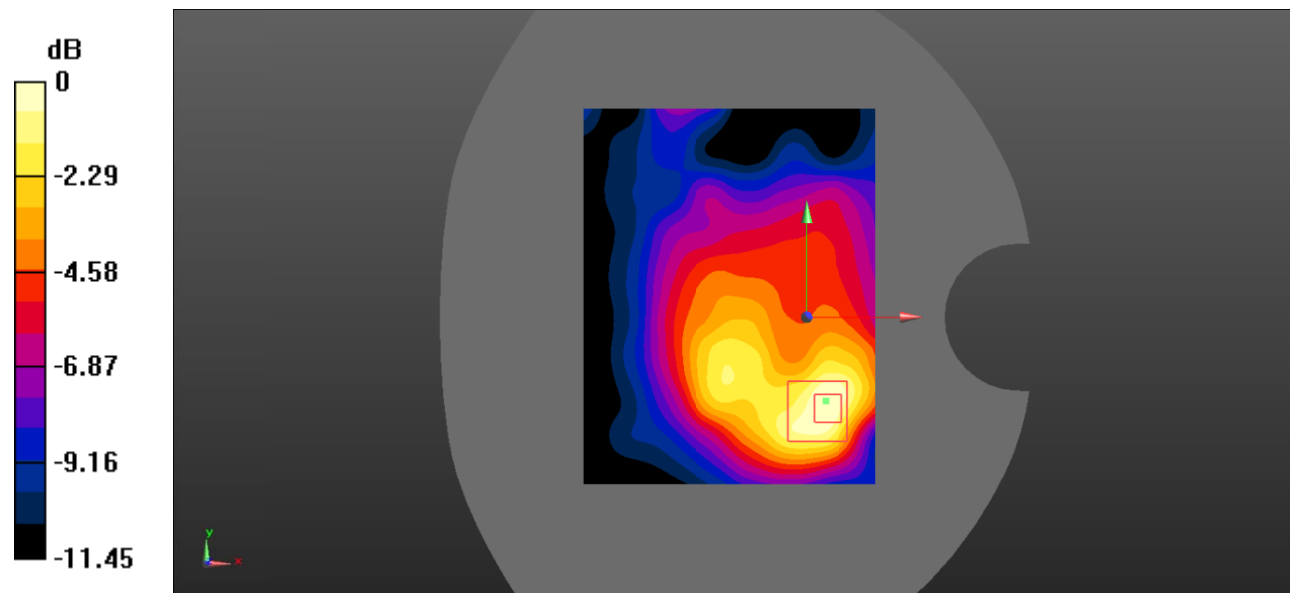
Zoom Scan (5x5x7)/Cube 0: Measurement grid: $dx=8\text{mm}$, $dy=8\text{mm}$, $dz=5\text{mm}$

Reference Value = 11.70 V/m; Power Drift = -0.10 dB

Peak SAR (extrapolated) = 0.708 W/kg

SAR(1 g) = 0.367 W/kg; SAR(10 g) = 0.197 W/kg

Maximum value of SAR (measured) = 0.391 W/kg



0 dB = 0.391 W/kg = -4.08 dBW/kg

Test Plot 15#: PCS 1900_Body Back_Middle

DUT: smart phone; Type: ELUGA I8; Serial: 19071700113;

Communication System: Generic GPRS-4 slots; Frequency: 1880 MHz;Duty Cycle: 1:2
 Medium parameters used: $f = 1880 \text{ MHz}$; $\sigma = 1.376 \text{ S/m}$; $\epsilon_r = 40.71$; $\rho = 1000 \text{ kg/m}^3$;
 Phantom section: Flat Section

DASY5 Configuration:

- Probe: EX3DV4 - SN7522; ConvF(7.91, 7.91, 7.91); Calibrated: 2018/11/2;
- Sensor-Surface: 4mm (Mechanical Surface Detection)
- Electronics: DAE4 SN1562;Calibrated: 2018/11/6
- Phantom: SAM-Twin V8.0 P1aP2a; Type: QD 000 P41 AA; Serial: 1962
- Measurement SW: DASY52, Version 52.10 (2);

Area Scan (71x91x1): Interpolated grid: $dx=1.500 \text{ mm}$, $dy=1.500 \text{ mm}$

Maximum value of SAR (interpolated) = 0.425 W/kg

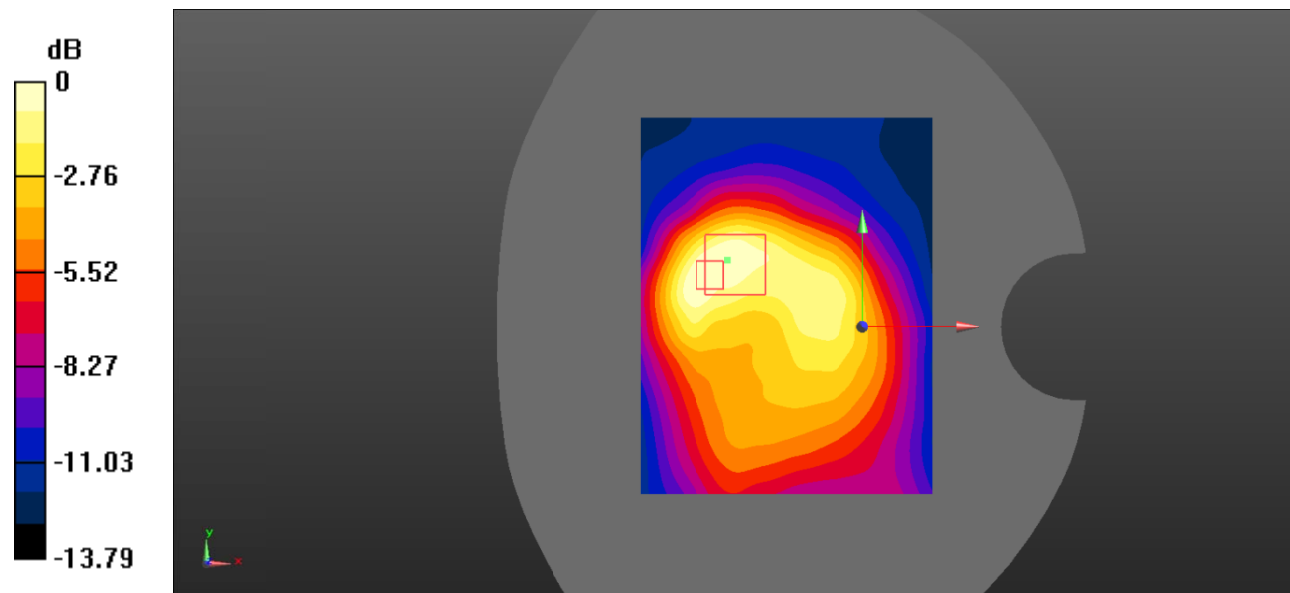
Zoom Scan (5x5x7)/Cube 0: Measurement grid: $dx=8\text{mm}$, $dy=8\text{mm}$, $dz=5\text{mm}$

Reference Value = 12.92 V/m ; Power Drift = 0.20 dB

Peak SAR (extrapolated) = 0.509 W/kg

SAR(1 g) = 0.337 W/kg ; SAR(10 g) = 0.195 W/kg

Maximum value of SAR (measured) = 0.403 W/kg



0 dB = $0.403 \text{ W/kg} = -3.95 \text{ dBW/kg}$

Test Plot 16#: PCS 1900_Body Left_Middle

DUT: smart phone; Type: ELUGA I8; Serial: 19071700113;

Communication System: Generic GPRS-4 slots; Frequency: 1880 MHz;Duty Cycle: 1:2
 Medium parameters used: $f = 1880 \text{ MHz}$; $\sigma = 1.376 \text{ S/m}$; $\epsilon_r = 40.71$; $\rho = 1000 \text{ kg/m}^3$;
 Phantom section: Flat Section

DASY5 Configuration:

- Probe: EX3DV4 - SN7522; ConvF(7.91, 7.91, 7.91); Calibrated: 2018/11/2;
- Sensor-Surface: 4mm (Mechanical Surface Detection)
- Electronics: DAE4 SN1562;Calibrated: 2018/11/6
- Phantom: SAM-Twin V8.0 P1aP2a; Type: QD 000 P41 AA; Serial: 1962
- Measurement SW: DASY52, Version 52.10 (2);

Area Scan (71x91x1): Interpolated grid: $dx=1.500 \text{ mm}$, $dy=1.500 \text{ mm}$

Maximum value of SAR (interpolated) = 0.137 W/kg

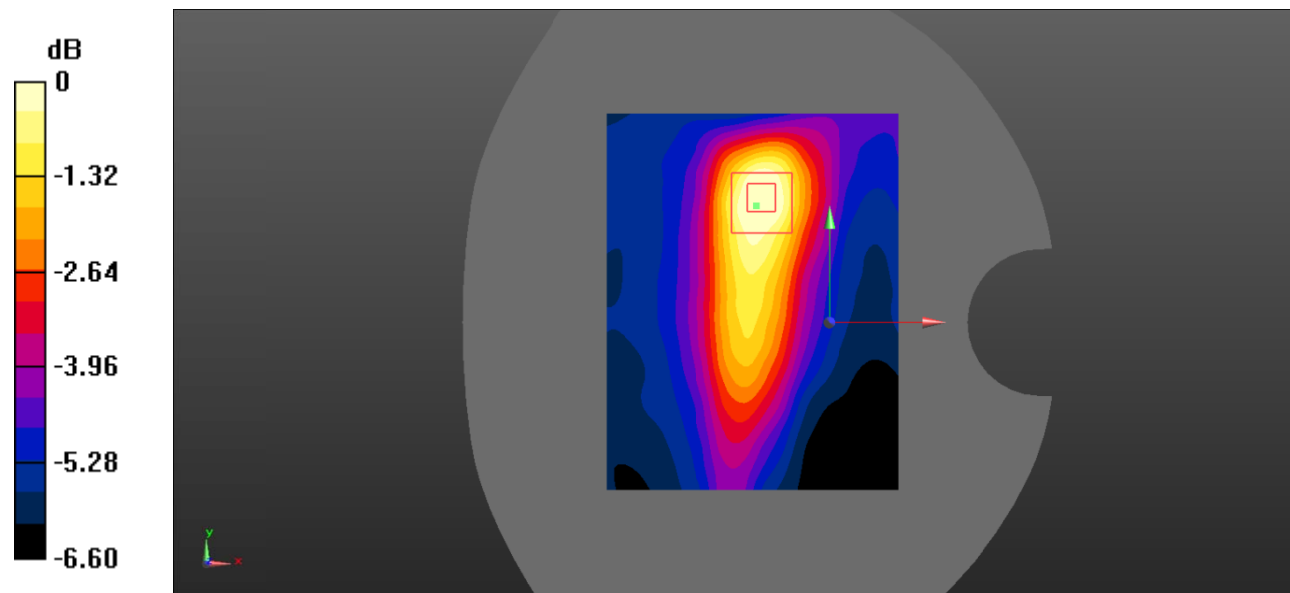
Zoom Scan (5x5x7)/Cube 0: Measurement grid: $dx=8\text{mm}$, $dy=8\text{mm}$, $dz=5\text{mm}$

Reference Value = 7.738 V/m ; Power Drift = 0.08 dB

Peak SAR (extrapolated) = 0.181 W/kg

SAR(1 g) = 0.117 W/kg ; SAR(10 g) = 0.074 W/kg

Maximum value of SAR (measured) = 0.125 W/kg



0 dB = $0.125 \text{ W/kg} = -9.03 \text{ dBW/kg}$

Test Plot 17#: PCS 1900_Body Right_Middle

DUT: smart phone; Type: ELUGA I8; Serial: 19071700113;

Communication System: Generic GPRS-4 slots; Frequency: 1880 MHz;Duty Cycle: 1:2
 Medium parameters used: $f = 1880 \text{ MHz}$; $\sigma = 1.376 \text{ S/m}$; $\epsilon_r = 40.71$; $\rho = 1000 \text{ kg/m}^3$;
 Phantom section: Flat Section

DASY5 Configuration:

- Probe: EX3DV4 - SN7522; ConvF(7.91, 7.91, 7.91); Calibrated: 2018/11/2;
- Sensor-Surface: 4mm (Mechanical Surface Detection)
- Electronics: DAE4 SN1562;Calibrated: 2018/11/6
- Phantom: SAM-Twin V8.0 P1aP2a; Type: QD 000 P41 AA; Serial: 1962
- Measurement SW: DASY52, Version 52.10 (2);

Area Scan (71x91x1): Interpolated grid: $dx=1.500 \text{ mm}$, $dy=1.500 \text{ mm}$

Maximum value of SAR (interpolated) = 0.0723 W/kg

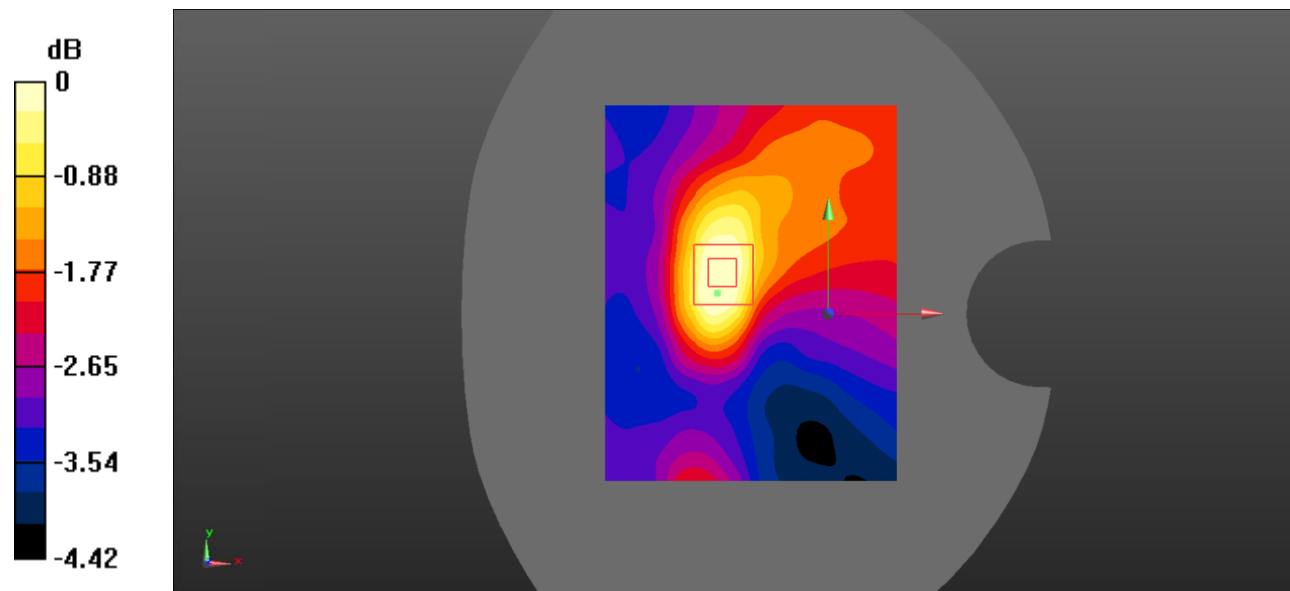
Zoom Scan (5x5x7)/Cube 0: Measurement grid: $dx=8\text{mm}$, $dy=8\text{mm}$, $dz=5\text{mm}$

Reference Value = 5.631 V/m ; Power Drift = 0.12 dB

Peak SAR (extrapolated) = 0.105 W/kg

SAR(1 g) = 0.066 W/kg ; SAR(10 g) = 0.046 W/kg

Maximum value of SAR (measured) = 0.0690 W/kg



0 dB = $0.0690 \text{ W/kg} = -11.61 \text{ dBW/kg}$

Test Plot 18#: PCS 1900_Body Bottom_Middle

DUT: smart phone; Type: ELUGA I8; Serial: 19071700113;

Communication System: Generic GPRS-4 slots; Frequency: 1880 MHz;Duty Cycle: 1:2
 Medium parameters used: $f = 1880 \text{ MHz}$; $\sigma = 1.376 \text{ S/m}$; $\epsilon_r = 40.71$; $\rho = 1000 \text{ kg/m}^3$;
 Phantom section: Flat Section

DASY5 Configuration:

- Probe: EX3DV4 - SN7522; ConvF(7.91, 7.91, 7.91); Calibrated: 2018/11/2;
- Sensor-Surface: 4mm (Mechanical Surface Detection)
- Electronics: DAE4 SN1562;Calibrated: 2018/11/6
- Phantom: SAM-Twin V8.0 P1aP2a; Type: QD 000 P41 AA; Serial: 1962
- Measurement SW: DASY52, Version 52.10 (2);

Area Scan (71x91x1): Interpolated grid: $dx=1.500 \text{ mm}$, $dy=1.500 \text{ mm}$

Maximum value of SAR (interpolated) = 0.363 W/kg

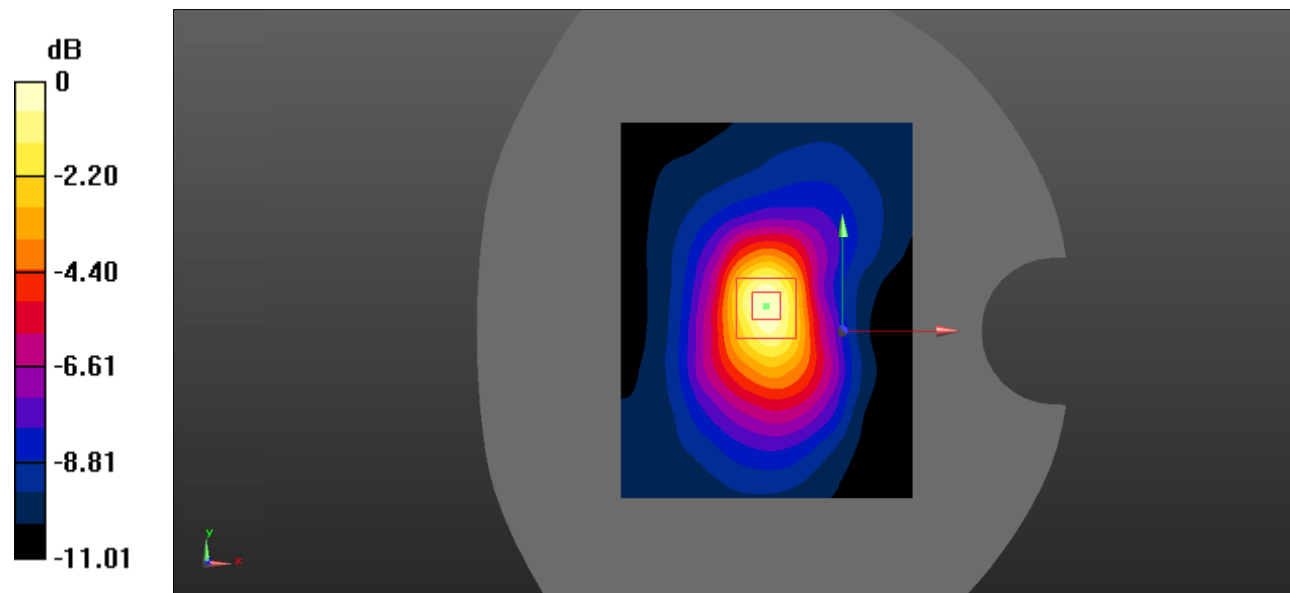
Zoom Scan (5x5x7)/Cube 0: Measurement grid: $dx=8\text{mm}$, $dy=8\text{mm}$, $dz=5\text{mm}$

Reference Value = 14.33 V/m ; Power Drift = -0.06 dB

Peak SAR (extrapolated) = 0.529 W/kg

SAR(1 g) = 0.305 W/kg; SAR(10 g) = 0.167 W/kg

Maximum value of SAR (measured) = 0.342 W/kg



0 dB = $0.342 \text{ W/kg} = -4.66 \text{ dBW/kg}$

Test Plot 19#: LTE Band 5_Head Left Cheek_1RB_Middle

DUT: smart phone; Type: ELUGA I8; Serial: 19071700113;

Communication System: Generic FDD-LTE; Frequency: 836.5 MHz; Duty Cycle: 1:1
 Medium parameters used: $f = 836.5 \text{ MHz}$; $\sigma = 0.882 \text{ S/m}$; $\epsilon_r = 41.752$; $\rho = 1000 \text{ kg/m}^3$;
 Phantom section: Left Section

DASY5 Configuration:

- Probe: EX3DV4 - SN7522; ConvF(9.46, 9.46, 9.46); Calibrated: 2018/11/2;
- Sensor-Surface: 4mm (Mechanical Surface Detection)
- Electronics: DAE4 SN1562; Calibrated: 2018/11/6
- Phantom: SAM-Twin V8.0 P1aP2a; Type: QD 000 P41 AA; Serial: 1962
- Measurement SW: DASY52, Version 52.10 (2);

Area Scan (71x91x1): Interpolated grid: $dx=1.500 \text{ mm}$, $dy=1.500 \text{ mm}$

Maximum value of SAR (interpolated) = 0.155 W/kg

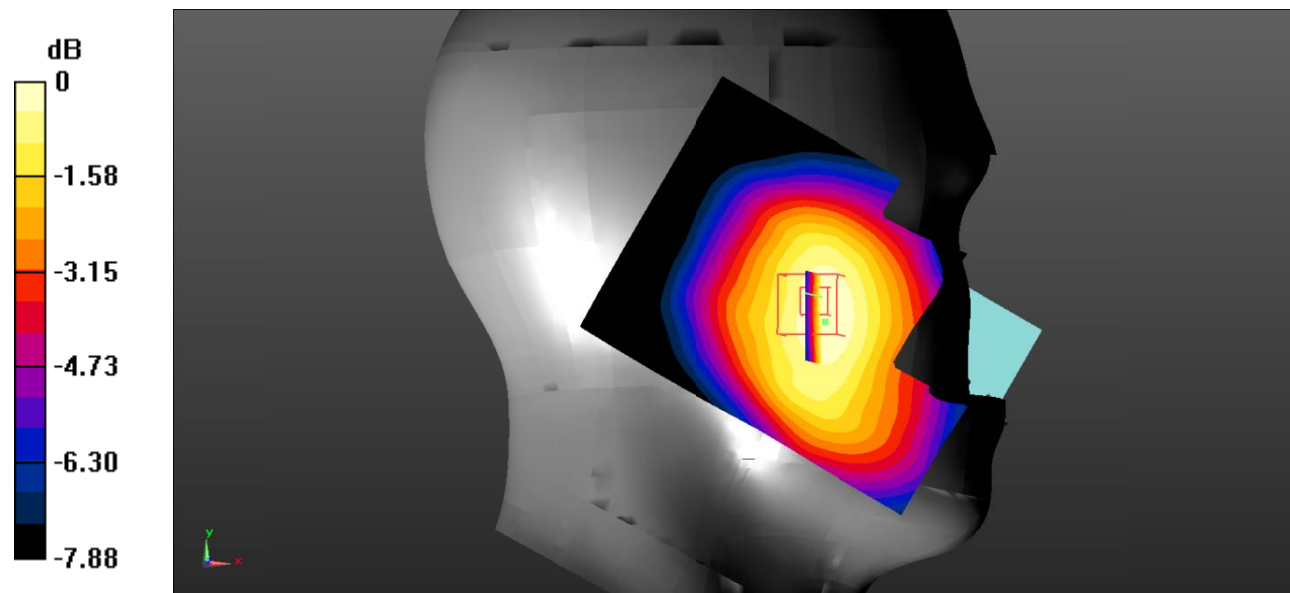
Zoom Scan (5x5x7)/Cube 0: Measurement grid: $dx=8\text{mm}$, $dy=8\text{mm}$, $dz=5\text{mm}$

Reference Value = 7.760 V/m; Power Drift = -3.38 dB

Peak SAR (extrapolated) = 0.183 W/kg

SAR(1 g) = 0.145 W/kg; SAR(10 g) = 0.110 W/kg

Maximum value of SAR (measured) = 0.151 W/kg



0 dB = 0.151 W/kg = -8.21 dBW/kg

Test Plot 20#: LTE Band 5_Head Left Cheek_50%RB_Middle

DUT: smart phone; Type: ELUGA I8; Serial: 19071700113;

Communication System: Generic FDD-LTE; Frequency: 836.5 MHz; Duty Cycle: 1:1
 Medium parameters used: $f = 836.5 \text{ MHz}$; $\sigma = 0.882 \text{ S/m}$; $\epsilon_r = 41.752$; $\rho = 1000 \text{ kg/m}^3$;
 Phantom section: Left Section

DASY5 Configuration:

- Probe: EX3DV4 - SN7522; ConvF(9.46, 9.46, 9.46); Calibrated: 2018/11/2;
- Sensor-Surface: 4mm (Mechanical Surface Detection)
- Electronics: DAE4 SN1562; Calibrated: 2018/11/6
- Phantom: SAM-Twin V8.0 P1aP2a; Type: QD 000 P41 AA; Serial: 1962
- Measurement SW: DASY52, Version 52.10 (2);

Area Scan (71x91x1): Interpolated grid: $dx=1.500 \text{ mm}$, $dy=1.500 \text{ mm}$

Maximum value of SAR (interpolated) = 0.131 W/kg

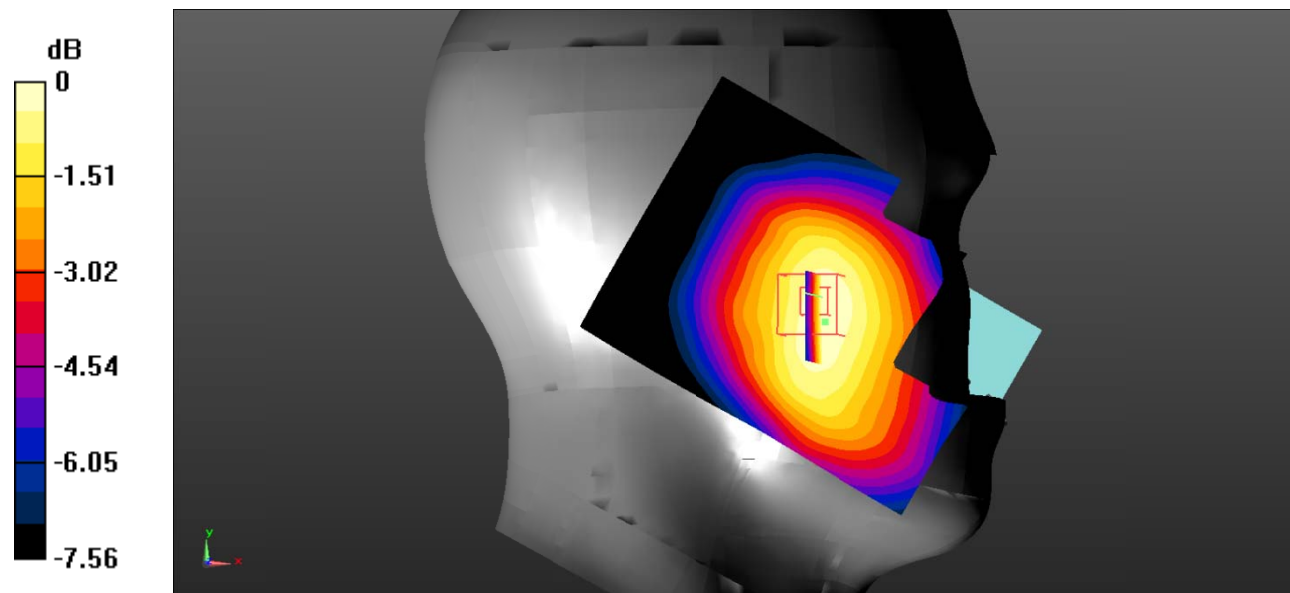
Zoom Scan (5x5x7)/Cube 0: Measurement grid: $dx=8\text{mm}$, $dy=8\text{mm}$, $dz=5\text{mm}$

Reference Value = 4.872 V/m; Power Drift = 0.29 dB

Peak SAR (extrapolated) = 0.157 W/kg

SAR(1 g) = 0.125 W/kg; SAR(10 g) = 0.094 W/kg

Maximum value of SAR (measured) = 0.129 W/kg



0 dB = 0.129 W/kg = -8.89 dBW/kg

Test Plot 21#: LTE Band 5_Head Left Tilt_1RB_Middle

DUT: smart phone; Type: ELUGA I8; Serial: 19071700113;

Communication System: Generic FDD-LTE; Frequency: 836.5 MHz; Duty Cycle: 1:1
 Medium parameters used: $f = 836.5 \text{ MHz}$; $\sigma = 0.882 \text{ S/m}$; $\epsilon_r = 41.752$; $\rho = 1000 \text{ kg/m}^3$;
 Phantom section: Left Section

DASY5 Configuration:

- Probe: EX3DV4 - SN7522; ConvF(9.46, 9.46, 9.46); Calibrated: 2018/11/2;
- Sensor-Surface: 4mm (Mechanical Surface Detection)
- Electronics: DAE4 SN1562; Calibrated: 2018/11/6
- Phantom: SAM-Twin V8.0 P1aP2a; Type: QD 000 P41 AA; Serial: 1962
- Measurement SW: DASY52, Version 52.10 (2);

Area Scan (71x91x1): Interpolated grid: $dx=1.500 \text{ mm}$, $dy=1.500 \text{ mm}$

Maximum value of SAR (interpolated) = 0.0819 W/kg

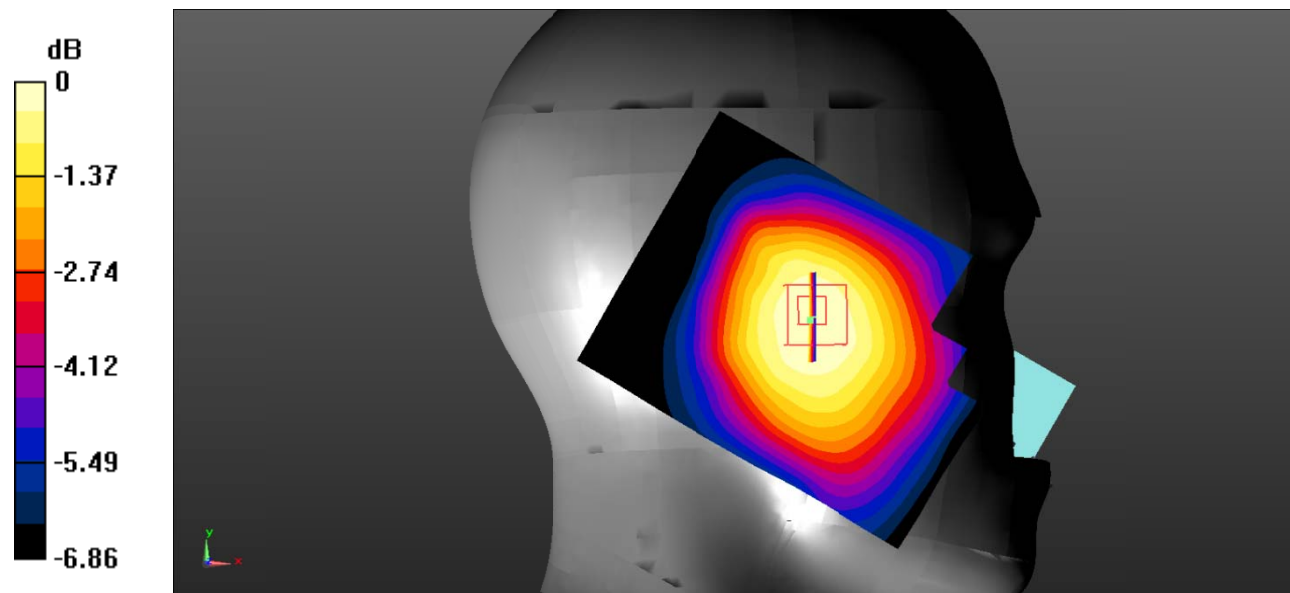
Zoom Scan (5x5x7)/Cube 0: Measurement grid: $dx=8\text{mm}$, $dy=8\text{mm}$, $dz=5\text{mm}$

Reference Value = 5.981 V/m; Power Drift = 0.15 dB

Peak SAR (extrapolated) = 0.0970 W/kg

SAR(1 g) = 0.078 W/kg; SAR(10 g) = 0.060 W/kg

Maximum value of SAR (measured) = 0.0808 W/kg



0 dB = 0.0808 W/kg = -10.93 dBW/kg

Test Plot 22#: LTE Band 5_Head Left Tilt_50%RB_Middle

DUT: smart phone; Type: ELUGA I8; Serial: 19071700113;

Communication System: Generic FDD-LTE; Frequency: 836.5 MHz; Duty Cycle: 1:1
 Medium parameters used: $f = 836.5 \text{ MHz}$; $\sigma = 0.882 \text{ S/m}$; $\epsilon_r = 41.752$; $\rho = 1000 \text{ kg/m}^3$;
 Phantom section: Left Section

DASY5 Configuration:

- Probe: EX3DV4 - SN7522; ConvF(9.46, 9.46, 9.46); Calibrated: 2018/11/2;
- Sensor-Surface: 4mm (Mechanical Surface Detection)
- Electronics: DAE4 SN1562; Calibrated: 2018/11/6
- Phantom: SAM-Twin V8.0 P1aP2a; Type: QD 000 P41 AA; Serial: 1962
- Measurement SW: DASY52, Version 52.10 (2);

Area Scan (71x91x1): Interpolated grid: $dx=1.500 \text{ mm}$, $dy=1.500 \text{ mm}$

Maximum value of SAR (interpolated) = 0.0704 W/kg

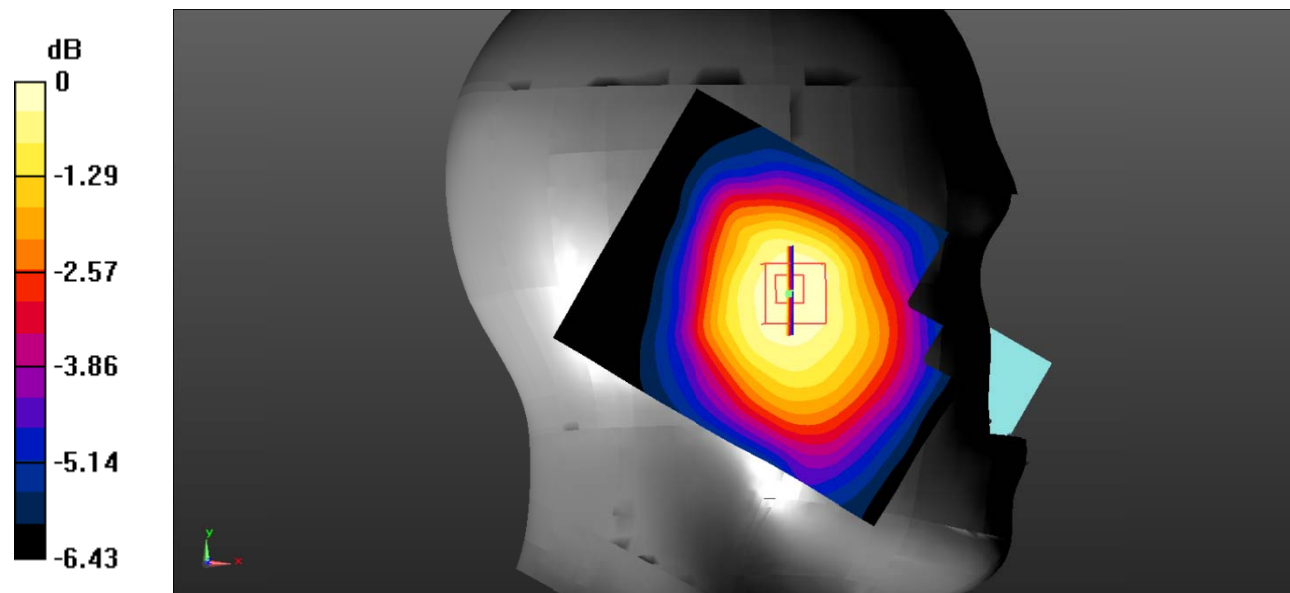
Zoom Scan (5x5x7)/Cube 0: Measurement grid: $dx=8\text{mm}$, $dy=8\text{mm}$, $dz=5\text{mm}$

Reference Value = 5.617 V/m ; Power Drift = 0.29 dB

Peak SAR (extrapolated) = 0.0830 W/kg

SAR(1 g) = 0.067 W/kg ; SAR(10 g) = 0.052 W/kg

Maximum value of SAR (measured) = 0.0699 W/kg



0 dB = $0.0699 \text{ W/kg} = -11.56 \text{ dBW/kg}$

Test Plot 23#: LTE Band 5_Head Right Cheek_1RB_Middle

DUT: smart phone; Type: ELUGA I8; Serial: 19071700113;

Communication System: Generic FDD-LTE; Frequency: 836.5 MHz; Duty Cycle: 1:1
 Medium parameters used: $f = 836.5 \text{ MHz}$; $\sigma = 0.882 \text{ S/m}$; $\epsilon_r = 41.752$; $\rho = 1000 \text{ kg/m}^3$;
 Phantom section: Right Section

DASY5 Configuration:

- Probe: EX3DV4 - SN7522; ConvF(9.46, 9.46, 9.46); Calibrated: 2018/11/2;
- Sensor-Surface: 4mm (Mechanical Surface Detection)
- Electronics: DAE4 SN1562; Calibrated: 2018/11/6
- Phantom: SAM-Twin V8.0 P1aP2a; Type: QD 000 P41 AA; Serial: 1962
- Measurement SW: DASY52, Version 52.10 (2);

Area Scan (71x91x1): Interpolated grid: $dx=1.500 \text{ mm}$, $dy=1.500 \text{ mm}$

Maximum value of SAR (interpolated) = 0.178 W/kg

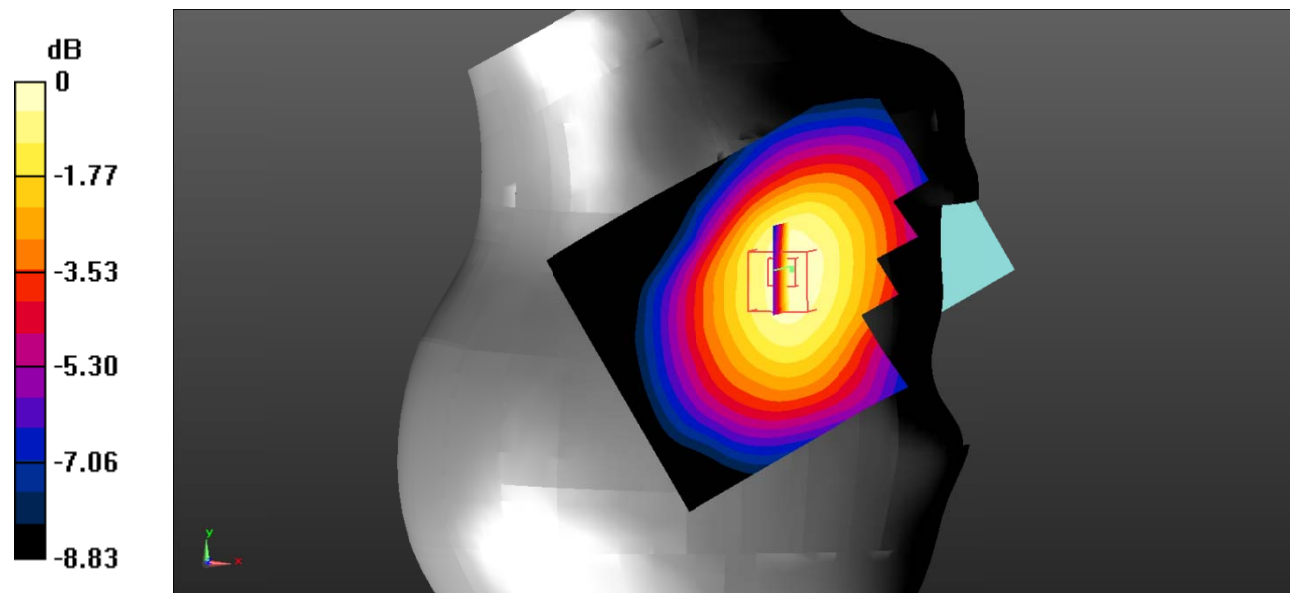
Zoom Scan (5x5x7)/Cube 0: Measurement grid: $dx=8\text{mm}$, $dy=8\text{mm}$, $dz=5\text{mm}$

Reference Value = 5.550 V/m; Power Drift = 0.11 dB

Peak SAR (extrapolated) = 0.222 W/kg

SAR(1 g) = 0.173 W/kg; SAR(10 g) = 0.130 W/kg

Maximum value of SAR (measured) = 0.180 W/kg



0 dB = 0.180 W/kg = -7.45 dBW/kg

Test Plot 24#: LTE Band 5_Head Right Cheek_50%RB_Middle

DUT: smart phone; Type: ELUGA I8; Serial: 19071700113;

Communication System: Generic FDD-LTE; Frequency: 836.5 MHz; Duty Cycle: 1:1
 Medium parameters used: $f = 836.5 \text{ MHz}$; $\sigma = 0.882 \text{ S/m}$; $\epsilon_r = 41.752$; $\rho = 1000 \text{ kg/m}^3$;
 Phantom section: Right Section

DASY5 Configuration:

- Probe: EX3DV4 - SN7522; ConvF(9.46, 9.46, 9.46); Calibrated: 2018/11/2;
- Sensor-Surface: 4mm (Mechanical Surface Detection)
- Electronics: DAE4 SN1562; Calibrated: 2018/11/6
- Phantom: SAM-Twin V8.0 P1aP2a; Type: QD 000 P41 AA; Serial: 1962
- Measurement SW: DASY52, Version 52.10 (2);

Area Scan (71x91x1): Interpolated grid: $dx=1.500 \text{ mm}$, $dy=1.500 \text{ mm}$

Maximum value of SAR (interpolated) = 0.152 W/kg

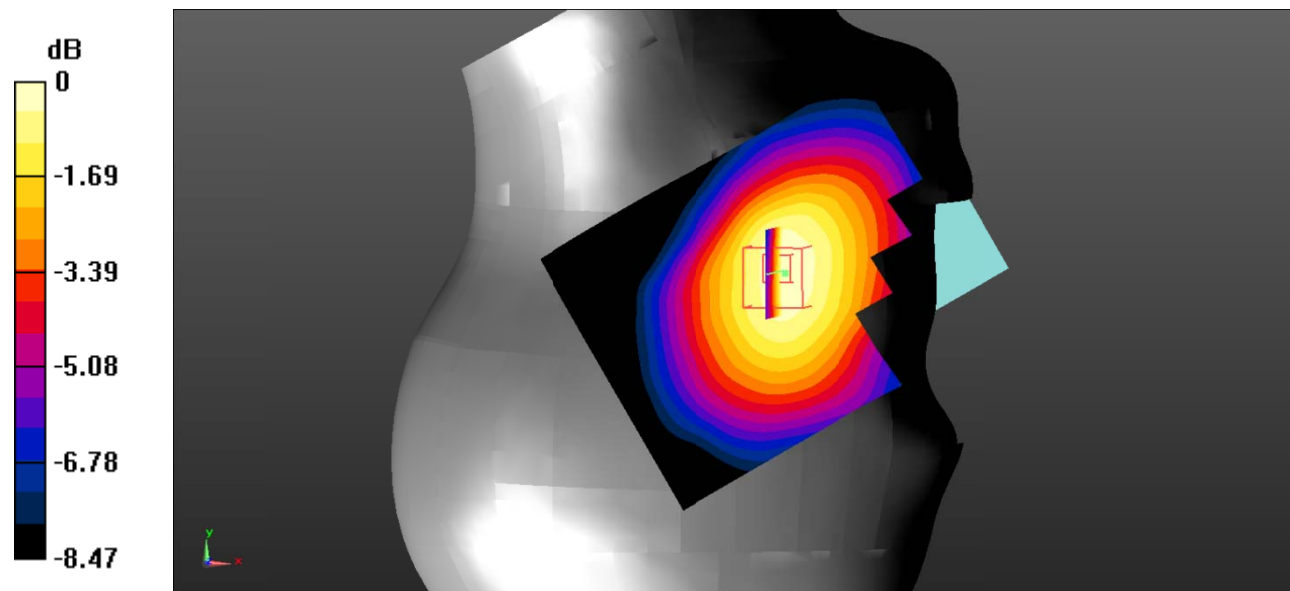
Zoom Scan (5x5x7)/Cube 0: Measurement grid: $dx=8\text{mm}$, $dy=8\text{mm}$, $dz=5\text{mm}$

Reference Value = 5.278 V/m; Power Drift = 0.23 dB

Peak SAR (extrapolated) = 0.189 W/kg

SAR(1 g) = 0.148 W/kg; SAR(10 g) = 0.112 W/kg

Maximum value of SAR (measured) = 0.155 W/kg



0 dB = 0.155 W/kg = -8.10 dBW/kg

Test Plot 25#: LTE Band 5_Head Right Tilt_1RB_Middle

DUT: smart phone; Type: ELUGA I8; Serial: 19071700113;

Communication System: Generic FDD-LTE; Frequency: 836.5 MHz; Duty Cycle: 1:1
 Medium parameters used: $f = 836.5 \text{ MHz}$; $\sigma = 0.882 \text{ S/m}$; $\epsilon_r = 41.752$; $\rho = 1000 \text{ kg/m}^3$;
 Phantom section: Right Section

DASY5 Configuration:

- Probe: EX3DV4 - SN7522; ConvF(9.46, 9.46, 9.46); Calibrated: 2018/11/2;
- Sensor-Surface: 4mm (Mechanical Surface Detection)
- Electronics: DAE4 SN1562; Calibrated: 2018/11/6
- Phantom: SAM-Twin V8.0 P1aP2a; Type: QD 000 P41 AA; Serial: 1962
- Measurement SW: DASY52, Version 52.10 (2);

Area Scan (71x91x1): Interpolated grid: $dx=1.500 \text{ mm}$, $dy=1.500 \text{ mm}$

Maximum value of SAR (interpolated) = 0.0830 W/kg

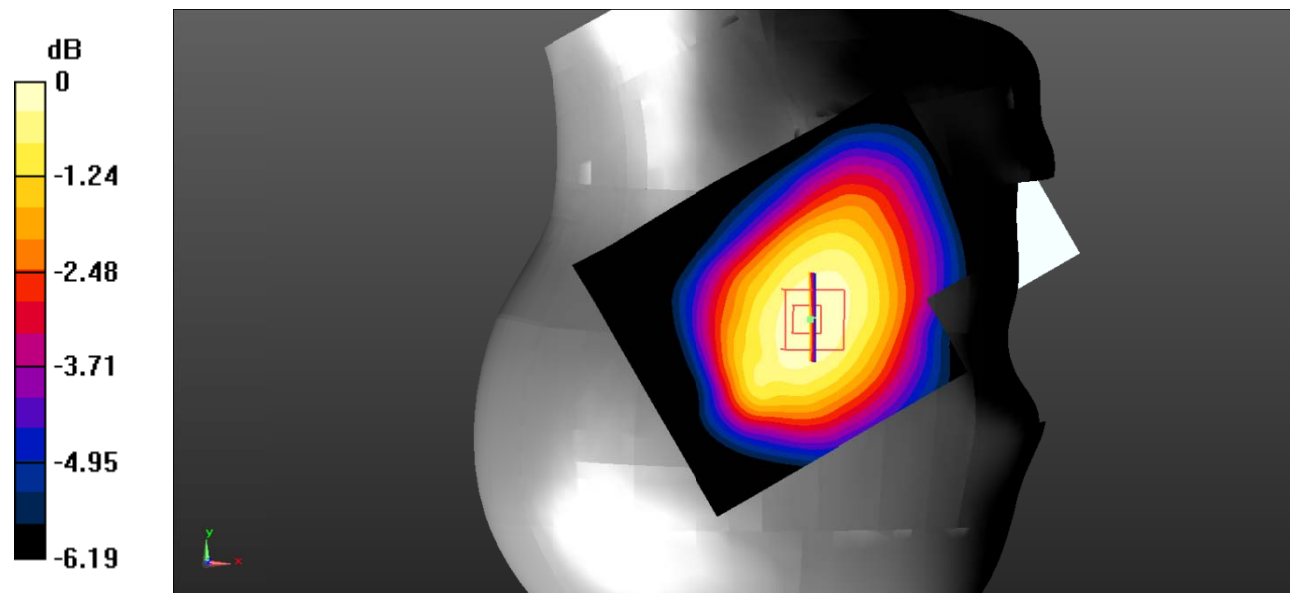
Zoom Scan (5x5x7)/Cube 0: Measurement grid: $dx=8\text{mm}$, $dy=8\text{mm}$, $dz=5\text{mm}$

Reference Value = 6.810 V/m; Power Drift = 0.71 dB

Peak SAR (extrapolated) = 0.101 W/kg

SAR(1 g) = 0.081 W/kg; SAR(10 g) = 0.064 W/kg

Maximum value of SAR (measured) = 0.0834 W/kg



0 dB = 0.0834 W/kg = -10.79 dBW/kg

Test Plot 26#: LTE Band 5_Head Right Tilt_50%RB_Middle

DUT: smart phone; Type: ELUGA I8; Serial: 19071700113;

Communication System: Generic FDD-LTE; Frequency: 836.5 MHz; Duty Cycle: 1:1
 Medium parameters used: $f = 836.5 \text{ MHz}$; $\sigma = 0.882 \text{ S/m}$; $\epsilon_r = 41.752$; $\rho = 1000 \text{ kg/m}^3$;
 Phantom section: Right Section

DASY5 Configuration:

- Probe: EX3DV4 - SN7522; ConvF(9.46, 9.46, 9.46); Calibrated: 2018/11/2;
- Sensor-Surface: 4mm (Mechanical Surface Detection)
- Electronics: DAE4 SN1562; Calibrated: 2018/11/6
- Phantom: SAM-Twin V8.0 P1aP2a; Type: QD 000 P41 AA; Serial: 1962
- Measurement SW: DASY52, Version 52.10 (2);

Area Scan (71x91x1): Interpolated grid: $dx=1.500 \text{ mm}$, $dy=1.500 \text{ mm}$

Maximum value of SAR (interpolated) = 0.0695 W/kg

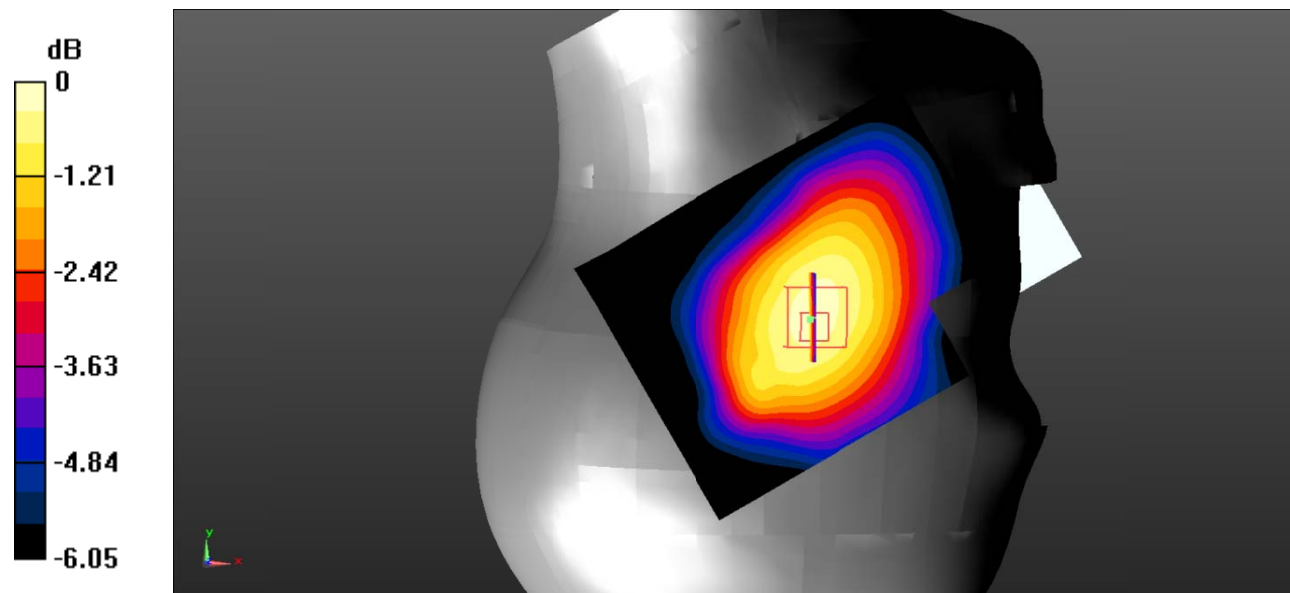
Zoom Scan (5x5x7)/Cube 0: Measurement grid: $dx=8\text{mm}$, $dy=8\text{mm}$, $dz=5\text{mm}$

Reference Value = 6.675 V/m; Power Drift = 0.14 dB

Peak SAR (extrapolated) = 0.0860 W/kg

SAR(1 g) = 0.071 W/kg; SAR(10 g) = 0.056 W/kg

Maximum value of SAR (measured) = 0.0730 W/kg



0 dB = 0.0730 W/kg = -11.37 dBW/kg

Test Plot 27#: LTE Band 5_Body Back_1RB_Middle

DUT: smart phone; Type: ELUGA I8; Serial: 19071700113;

Communication System: Generic FDD-LTE; Frequency: 836.5 MHz;Duty Cycle: 1:1
 Medium parameters used: $f = 836.5 \text{ MHz}$; $\sigma = 0.882 \text{ S/m}$; $\epsilon_r = 41.752$; $\rho = 1000 \text{ kg/m}^3$;
 Phantom section: Flat Section

DASY5 Configuration:

- Probe: EX3DV4 - SN7522; ConvF(9.46, 9.46, 9.46); Calibrated: 2018/11/2;
- Sensor-Surface: 4mm (Mechanical Surface Detection)
- Electronics: DAE4 SN1562;Calibrated: 2018/11/6
- Phantom: SAM-Twin V8.0 P1aP2a; Type: QD 000 P41 AA; Serial: 1962
- Measurement SW: DASY52, Version 52.10 (2);

Area Scan (71x91x1): Interpolated grid: $dx=1.500 \text{ mm}$, $dy=1.500 \text{ mm}$

Maximum value of SAR (interpolated) = 0.245 W/kg

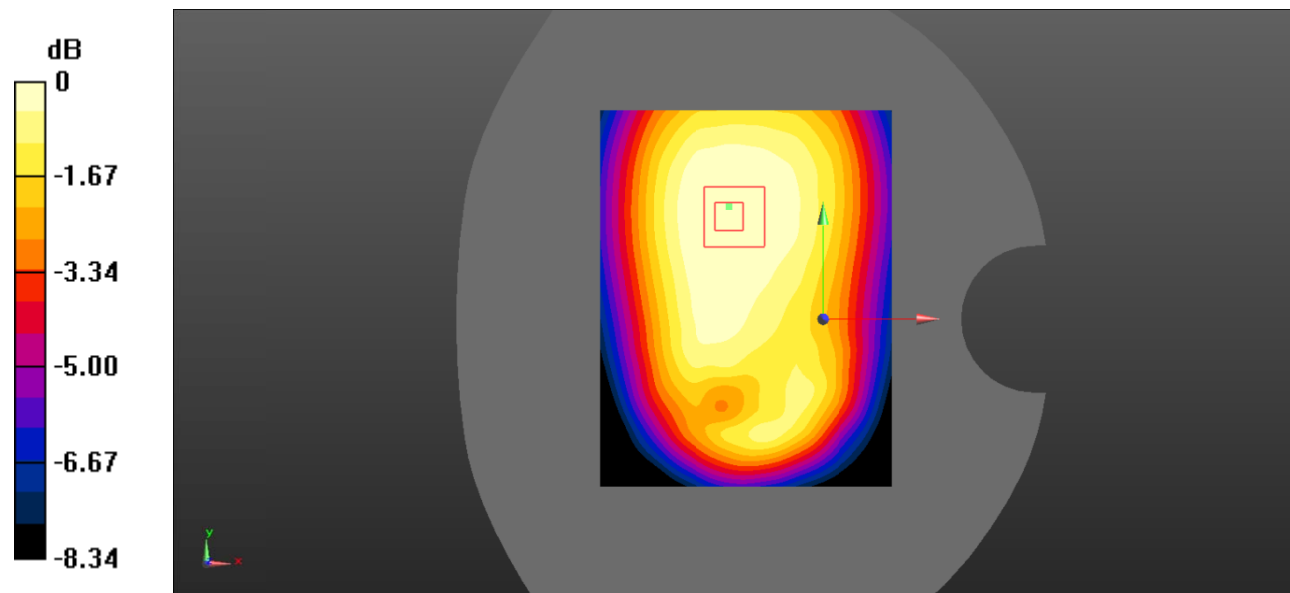
Zoom Scan (5x5x7)/Cube 0: Measurement grid: $dx=8\text{mm}$, $dy=8\text{mm}$, $dz=5\text{mm}$

Reference Value = 14.61 V/m; Power Drift = -0.02 dB

Peak SAR (extrapolated) = 0.289 W/kg

SAR(1 g) = 0.225 W/kg; SAR(10 g) = 0.168 W/kg

Maximum value of SAR (measured) = 0.234 W/kg



0 dB = 0.234 W/kg = -6.31 dBW/kg

Test Plot 28#: LTE Band 5_Body Back_50%RB_Middle

DUT: smart phone; Type: ELUGA I8; Serial: 19071700113;

Communication System: Generic FDD-LTE; Frequency: 836.5 MHz; Duty Cycle: 1:1
 Medium parameters used: $f = 836.5 \text{ MHz}$; $\sigma = 0.882 \text{ S/m}$; $\epsilon_r = 41.752$; $\rho = 1000 \text{ kg/m}^3$;
 Phantom section: Flat Section

DASY5 Configuration:

- Probe: EX3DV4 - SN7522; ConvF(9.46, 9.46, 9.46); Calibrated: 2018/11/2;
- Sensor-Surface: 4mm (Mechanical Surface Detection)
- Electronics: DAE4 SN1562; Calibrated: 2018/11/6
- Phantom: SAM-Twin V8.0 P1aP2a; Type: QD 000 P41 AA; Serial: 1962
- Measurement SW: DASY52, Version 52.10 (2);

Area Scan (71x91x1): Interpolated grid: $dx=1.500 \text{ mm}$, $dy=1.500 \text{ mm}$

Maximum value of SAR (interpolated) = 0.199 W/kg

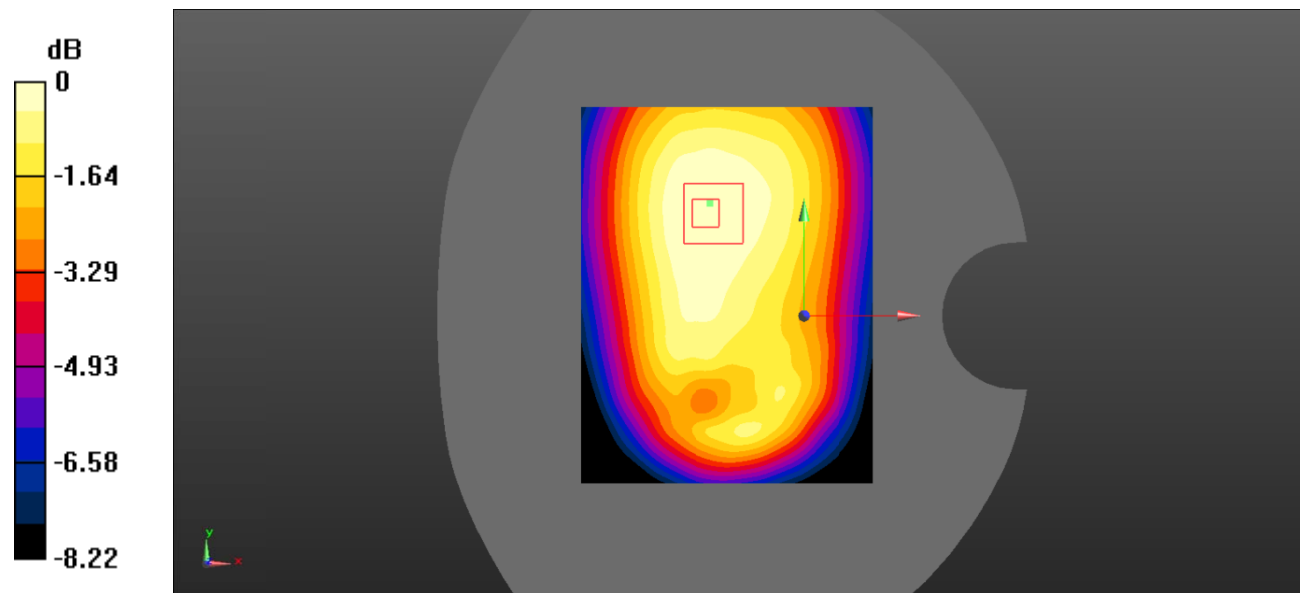
Zoom Scan (5x5x7)/Cube 0: Measurement grid: $dx=8\text{mm}$, $dy=8\text{mm}$, $dz=5\text{mm}$

Reference Value = 13.42 V/m; Power Drift = 0.00 dB

Peak SAR (extrapolated) = 0.247 W/kg

SAR(1 g) = 0.191 W/kg; SAR(10 g) = 0.142 W/kg

Maximum value of SAR (measured) = 0.198 W/kg



0 dB = 0.198 W/kg = -7.03 dBW/kg

Test Plot 29#: LTE Band 5_Body Left_1RB_Middle

DUT: smart phone; Type: ELUGA I8; Serial: 19071700113;

Communication System: Generic FDD-LTE; Frequency: 836.5 MHz; Duty Cycle: 1:1
 Medium parameters used: $f = 836.5 \text{ MHz}$; $\sigma = 0.882 \text{ S/m}$; $\epsilon_r = 41.752$; $\rho = 1000 \text{ kg/m}^3$;
 Phantom section: Flat Section

DASY5 Configuration:

- Probe: EX3DV4 - SN7522; ConvF(9.46, 9.46, 9.46); Calibrated: 2018/11/2;
- Sensor-Surface: 4mm (Mechanical Surface Detection)
- Electronics: DAE4 SN1562; Calibrated: 2018/11/6
- Phantom: SAM-Twin V8.0 P1aP2a; Type: QD 000 P41 AA; Serial: 1962
- Measurement SW: DASY52, Version 52.10 (2);

Area Scan (71x91x1): Interpolated grid: $dx=1.500 \text{ mm}$, $dy=1.500 \text{ mm}$

Maximum value of SAR (interpolated) = 0.105 W/kg

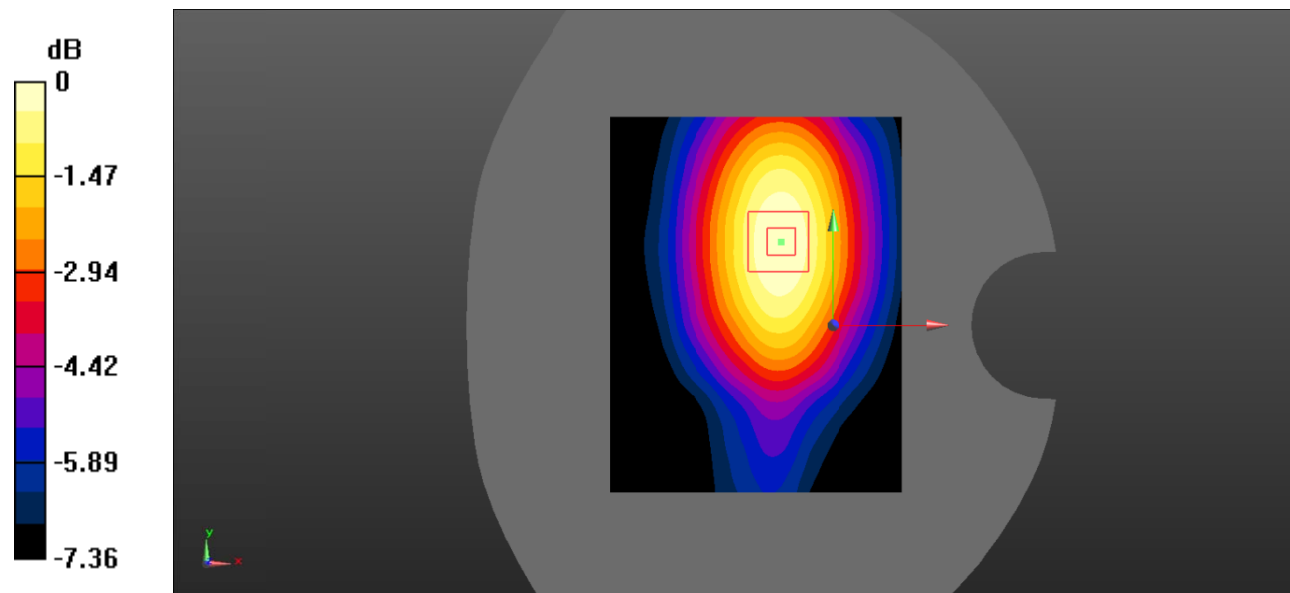
Zoom Scan (5x5x7)/Cube 0: Measurement grid: $dx=8\text{mm}$, $dy=8\text{mm}$, $dz=5\text{mm}$

Reference Value = 9.036 V/m; Power Drift = 0.05 dB

Peak SAR (extrapolated) = 0.136 W/kg

SAR(1 g) = 0.098 W/kg; SAR(10 g) = 0.069 W/kg

Maximum value of SAR (measured) = 0.104 W/kg



0 dB = 0.104 W/kg = -9.83 dBW/kg

Test Plot 30#: LTE Band 5_Body Left_50%RB_Middle

DUT: smart phone; Type: ELUGA I8; Serial: 19071700113;

Communication System: Generic FDD-LTE; Frequency: 836.5 MHz; Duty Cycle: 1:1
 Medium parameters used: $f = 836.5 \text{ MHz}$; $\sigma = 0.882 \text{ S/m}$; $\epsilon_r = 41.752$; $\rho = 1000 \text{ kg/m}^3$;
 Phantom section: Flat Section

DASY5 Configuration:

- Probe: EX3DV4 - SN7522; ConvF(9.46, 9.46, 9.46); Calibrated: 2018/11/2;
- Sensor-Surface: 4mm (Mechanical Surface Detection)
- Electronics: DAE4 SN1562; Calibrated: 2018/11/6
- Phantom: SAM-Twin V8.0 P1aP2a; Type: QD 000 P41 AA; Serial: 1962
- Measurement SW: DASY52, Version 52.10 (2);

Area Scan (71x91x1): Interpolated grid: $dx=1.500 \text{ mm}$, $dy=1.500 \text{ mm}$

Maximum value of SAR (interpolated) = 0.0899 W/kg

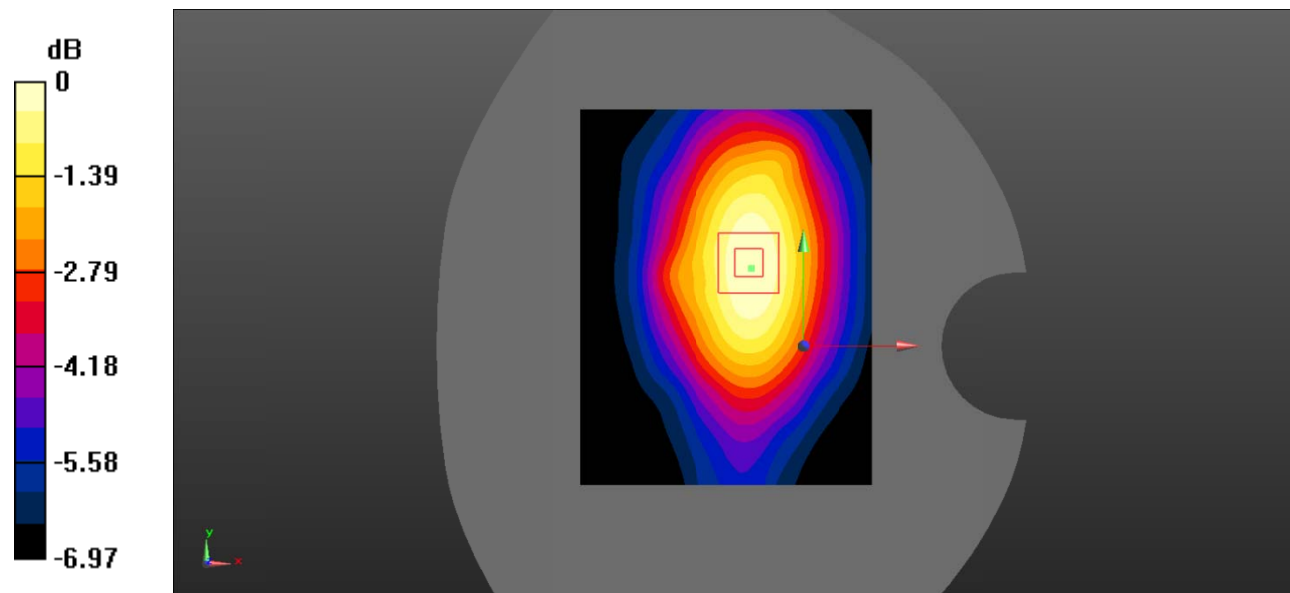
Zoom Scan (5x5x7)/Cube 0: Measurement grid: $dx=8\text{mm}$, $dy=8\text{mm}$, $dz=5\text{mm}$

Reference Value = 8.393 V/m; Power Drift = 0.00 dB

Peak SAR (extrapolated) = 0.120 W/kg

SAR(1 g) = 0.084 W/kg; SAR(10 g) = 0.059 W/kg

Maximum value of SAR (measured) = 0.0887 W/kg



0 dB = 0.0887 W/kg = -10.52 dBW/kg

Test Plot 31#: LTE Band 5_Body Right_1RB_Middle

DUT: smart phone; Type: ELUGA I8; Serial: 19071700113;

Communication System: Generic FDD-LTE; Frequency: 836.5 MHz; Duty Cycle: 1:1
 Medium parameters used: $f = 836.5 \text{ MHz}$; $\sigma = 0.882 \text{ S/m}$; $\epsilon_r = 41.752$; $\rho = 1000 \text{ kg/m}^3$;
 Phantom section: Flat Section

DASY5 Configuration:

- Probe: EX3DV4 - SN7522; ConvF(9.46, 9.46, 9.46); Calibrated: 2018/11/2;
- Sensor-Surface: 4mm (Mechanical Surface Detection)
- Electronics: DAE4 SN1562; Calibrated: 2018/11/6
- Phantom: SAM-Twin V8.0 P1aP2a; Type: QD 000 P41 AA; Serial: 1962
- Measurement SW: DASY52, Version 52.10 (2);

Area Scan (71x91x1): Interpolated grid: $dx=1.500 \text{ mm}$, $dy=1.500 \text{ mm}$

Maximum value of SAR (interpolated) = 0.173 W/kg

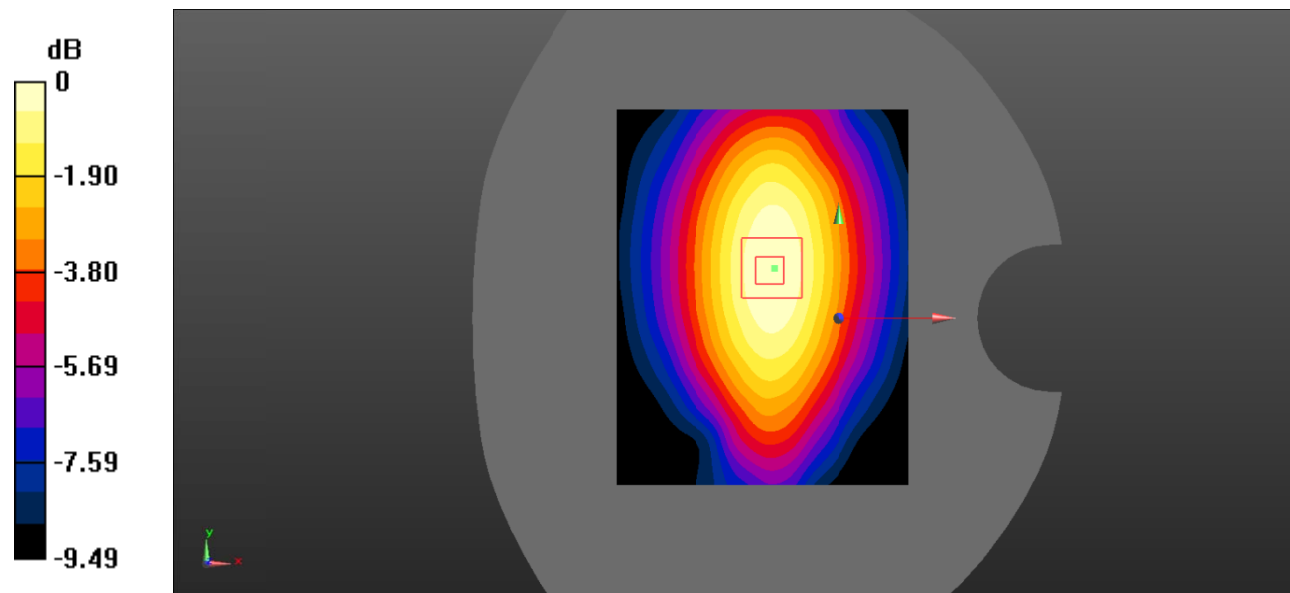
Zoom Scan (5x5x7)/Cube 0: Measurement grid: $dx=8\text{mm}$, $dy=8\text{mm}$, $dz=5\text{mm}$

Reference Value = 13.17 V/m; Power Drift = -0.00 dB

Peak SAR (extrapolated) = 0.225 W/kg

SAR(1 g) = 0.162 W/kg; SAR(10 g) = 0.113 W/kg

Maximum value of SAR (measured) = 0.172 W/kg



0 dB = 0.172 W/kg = -7.64 dBW/kg

Test Plot 32#: LTE Band 5_Body Right_50%RB_Middle

DUT: smart phone; Type: ELUGA I8; Serial: 19071700113;

Communication System: Generic FDD-LTE; Frequency: 836.5 MHz; Duty Cycle: 1:1
 Medium parameters used: $f = 836.5 \text{ MHz}$; $\sigma = 0.882 \text{ S/m}$; $\epsilon_r = 41.752$; $\rho = 1000 \text{ kg/m}^3$;
 Phantom section: Flat Section

DASY5 Configuration:

- Probe: EX3DV4 - SN7522; ConvF(9.46, 9.46, 9.46); Calibrated: 2018/11/2;
- Sensor-Surface: 4mm (Mechanical Surface Detection)
- Electronics: DAE4 SN1562; Calibrated: 2018/11/6
- Phantom: SAM-Twin V8.0 P1aP2a; Type: QD 000 P41 AA; Serial: 1962
- Measurement SW: DASY52, Version 52.10 (2);

Area Scan (71x91x1): Interpolated grid: $dx=1.500 \text{ mm}$, $dy=1.500 \text{ mm}$

Maximum value of SAR (interpolated) = 0.151 W/kg

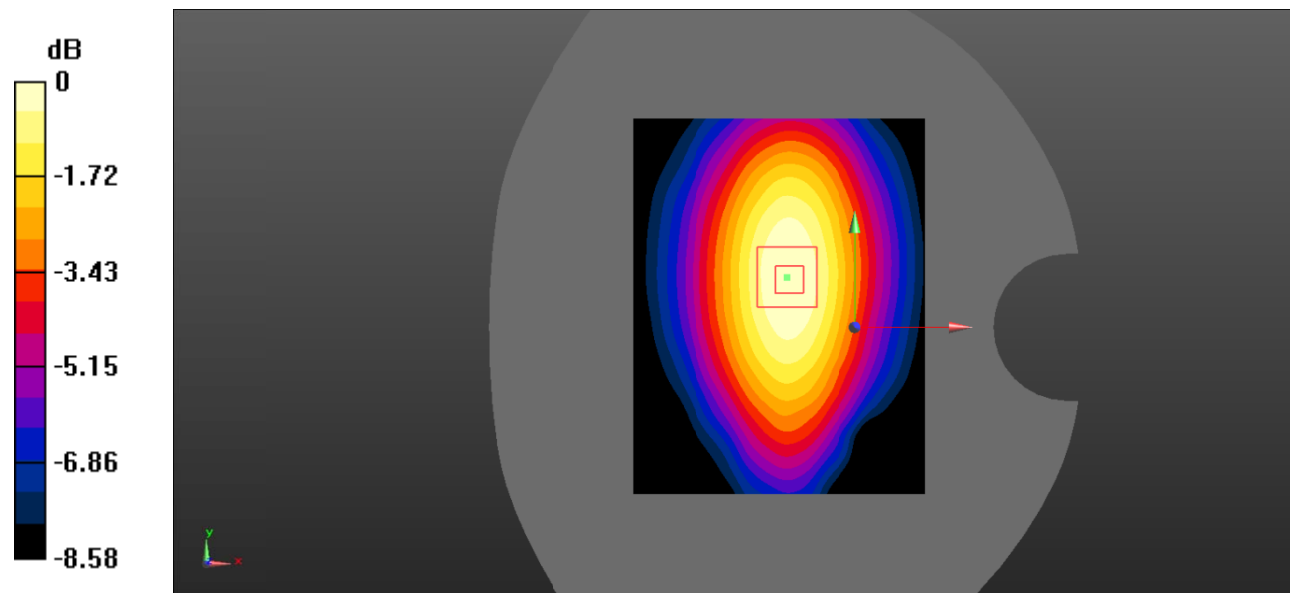
Zoom Scan (5x5x7)/Cube 0: Measurement grid: $dx=8\text{mm}$, $dy=8\text{mm}$, $dz=5\text{mm}$

Reference Value = 12.32 V/m; Power Drift = -0.04 dB

Peak SAR (extrapolated) = 0.200 W/kg

SAR(1 g) = 0.141 W/kg; SAR(10 g) = 0.098 W/kg

Maximum value of SAR (measured) = 0.149 W/kg



0 dB = 0.149 W/kg = -8.27 dBW/kg

Test Plot 33#: LTE Band 5_Body Bottom_1RB_Middle

DUT: smart phone; Type: ELUGA I8; Serial: 19071700113;

Communication System: Generic FDD-LTE; Frequency: 836.5 MHz; Duty Cycle: 1:1
 Medium parameters used: $f = 836.5 \text{ MHz}$; $\sigma = 0.882 \text{ S/m}$; $\epsilon_r = 41.752$; $\rho = 1000 \text{ kg/m}^3$;
 Phantom section: Flat Section

DASY5 Configuration:

- Probe: EX3DV4 - SN7522; ConvF(9.46, 9.46, 9.46); Calibrated: 2018/11/2;
- Sensor-Surface: 4mm (Mechanical Surface Detection)
- Electronics: DAE4 SN1562; Calibrated: 2018/11/6
- Phantom: SAM-Twin V8.0 P1aP2a; Type: QD 000 P41 AA; Serial: 1962
- Measurement SW: DASY52, Version 52.10 (2);

Area Scan (71x91x1): Interpolated grid: $dx=1.500 \text{ mm}$, $dy=1.500 \text{ mm}$

Maximum value of SAR (interpolated) = 0.0753 W/kg

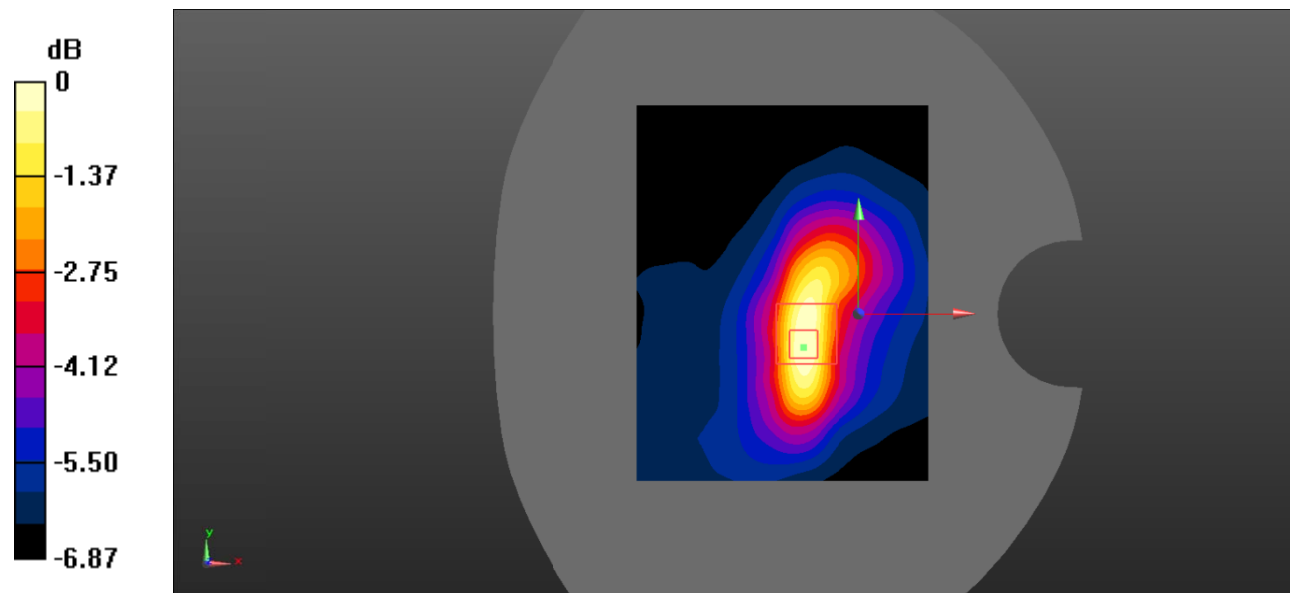
Zoom Scan (5x5x7)/Cube 0: Measurement grid: $dx=8\text{mm}$, $dy=8\text{mm}$, $dz=5\text{mm}$

Reference Value = 8.499 V/m ; Power Drift = -0.50 dB

Peak SAR (extrapolated) = 0.152 W/kg

SAR(1 g) = 0.069 W/kg ; SAR(10 g) = 0.041 W/kg

Maximum value of SAR (measured) = 0.0732 W/kg



0 dB = 0.0732 W/kg = -11.35 dBW/kg

Test Plot 34#: LTE Band 5_Body Bottom_50%RB_Middle

DUT: smart phone; Type: ELUGA I8; Serial: 19071700113;

Communication System: Generic FDD-LTE; Frequency: 836.5 MHz; Duty Cycle: 1:1
 Medium parameters used: $f = 836.5 \text{ MHz}$; $\sigma = 0.882 \text{ S/m}$; $\epsilon_r = 41.752$; $\rho = 1000 \text{ kg/m}^3$;
 Phantom section: Flat Section

DASY5 Configuration:

- Probe: EX3DV4 - SN7522; ConvF(9.46, 9.46, 9.46); Calibrated: 2018/11/2;
- Sensor-Surface: 4mm (Mechanical Surface Detection)
- Electronics: DAE4 SN1562; Calibrated: 2018/11/6
- Phantom: SAM-Twin V8.0 P1aP2a; Type: QD 000 P41 AA; Serial: 1962
- Measurement SW: DASY52, Version 52.10 (2);

Area Scan (71x91x1): Interpolated grid: $dx=1.500 \text{ mm}$, $dy=1.500 \text{ mm}$

Maximum value of SAR (interpolated) = 0.0650 W/kg

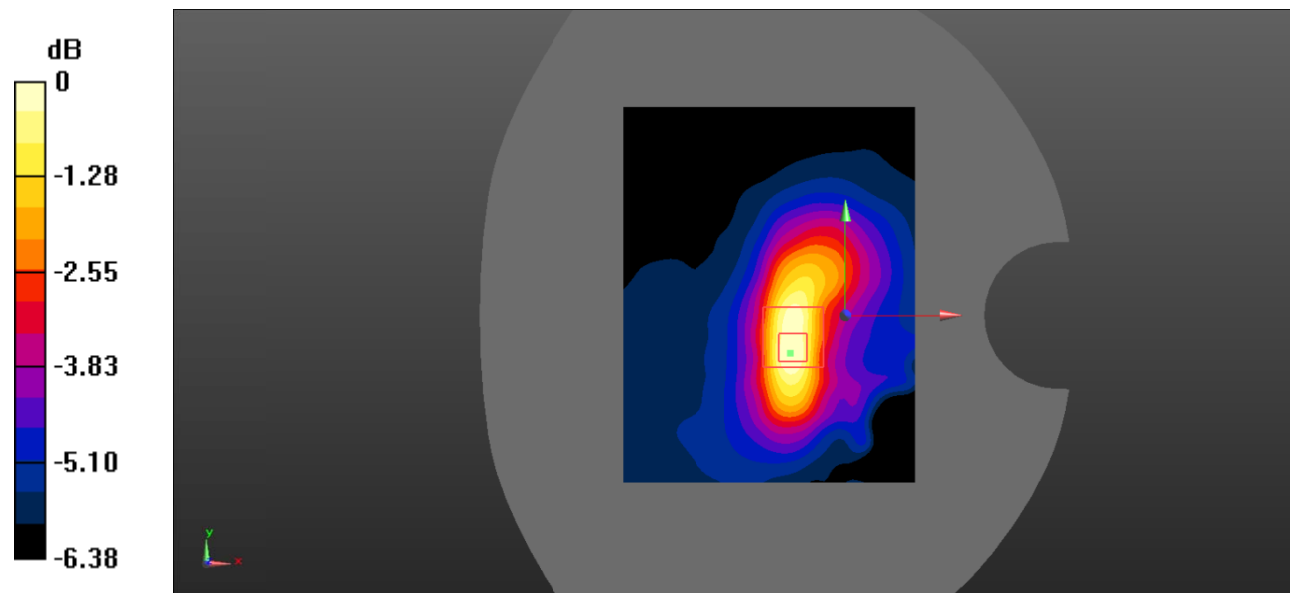
Zoom Scan (5x5x7)/Cube 0: Measurement grid: $dx=8\text{mm}$, $dy=8\text{mm}$, $dz=5\text{mm}$

Reference Value = 7.811 V/m; Power Drift = -0.41 dB

Peak SAR (extrapolated) = 0.138 W/kg

SAR(1 g) = 0.061 W/kg; SAR(10 g) = 0.036 W/kg

Maximum value of SAR (measured) = 0.0635 W/kg



0 dB = 0.0635 W/kg = -11.97 dBW/kg