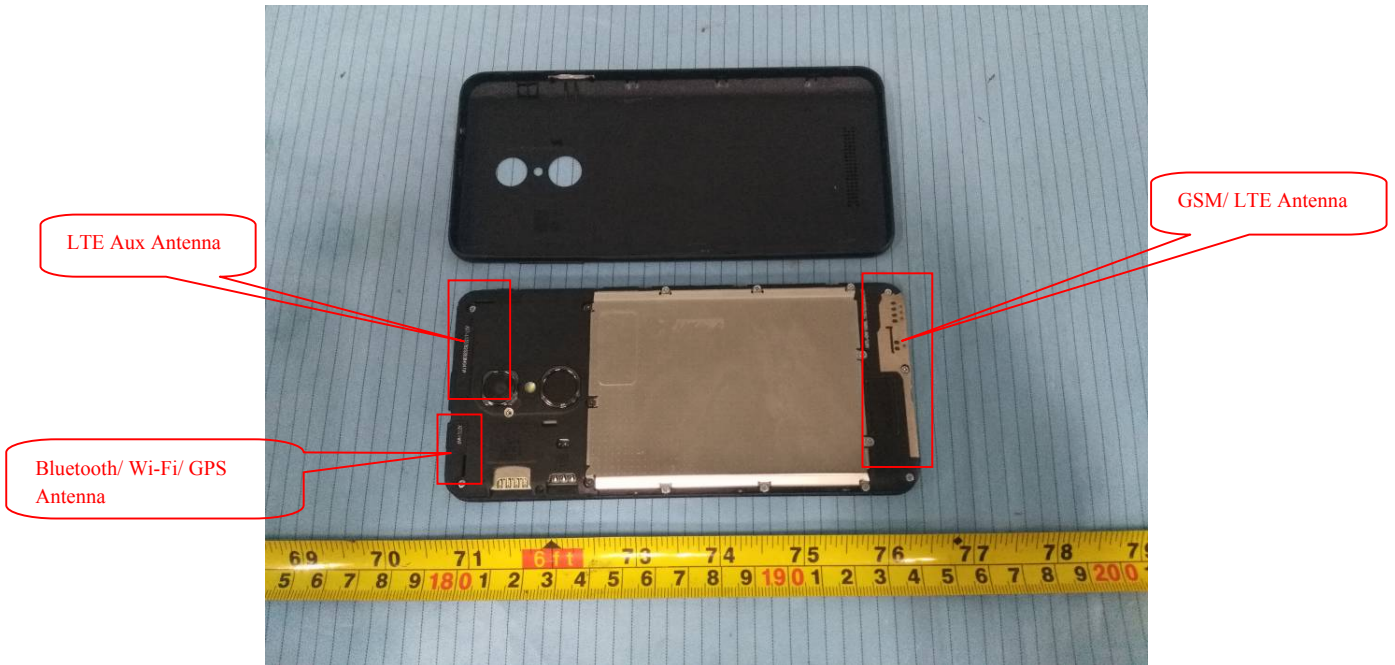


## EXHIBIT C - EUT INTERNAL PHOTOGRAPHS

---

### EUT – Cover off View 1



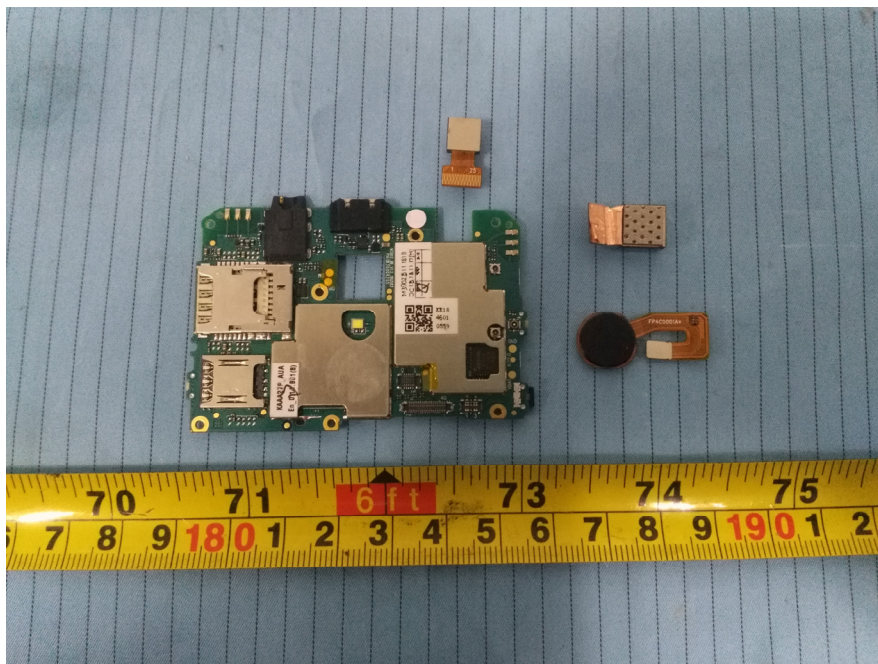
### EUT – Cover off View 2



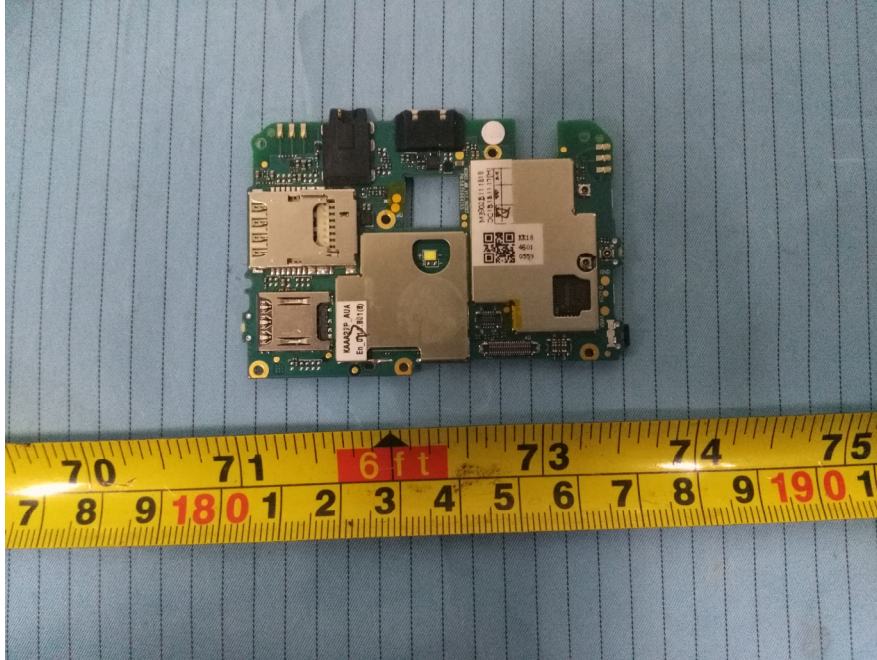
**EUT – Cover off View 3**



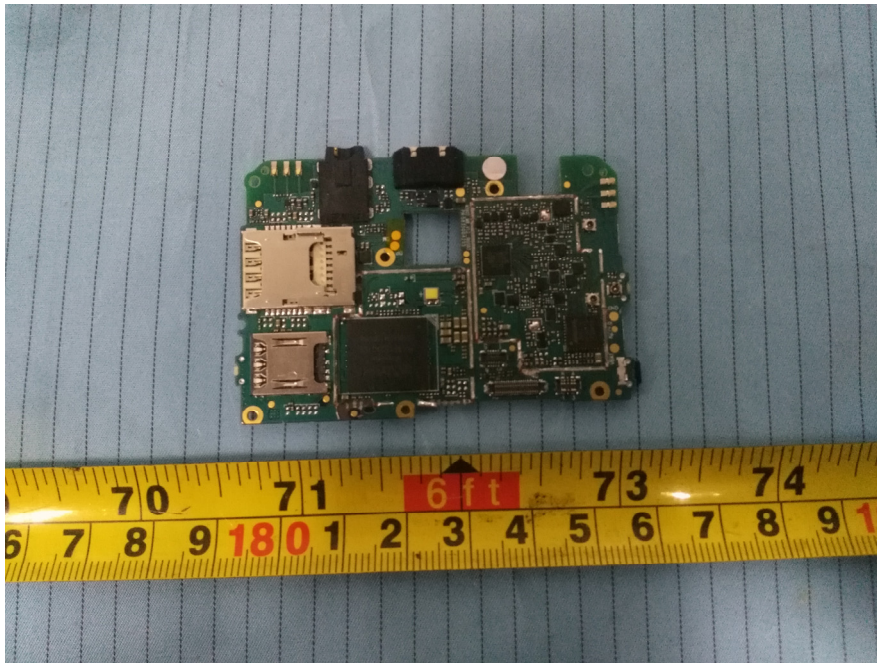
**EUT – Main Board 1 Top View 1**



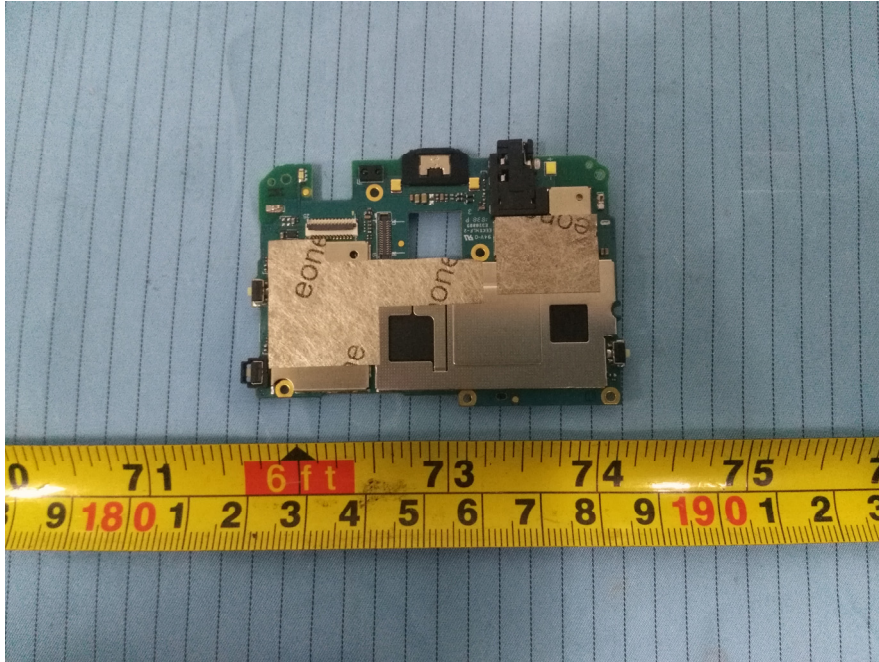
**EUT – Main Board 1 Top View 2**



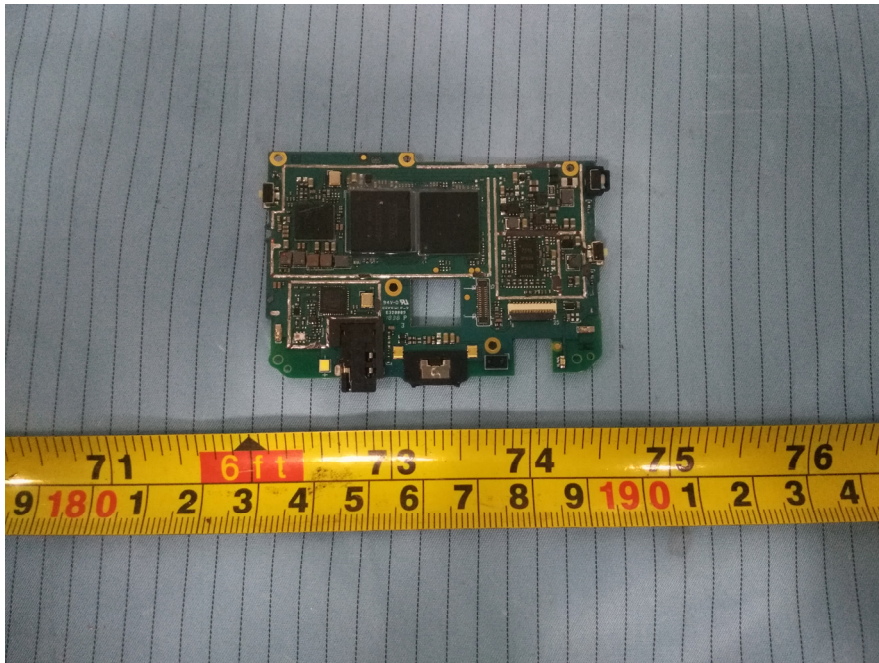
**EUT – Main Board 1 Top Shielding off View**



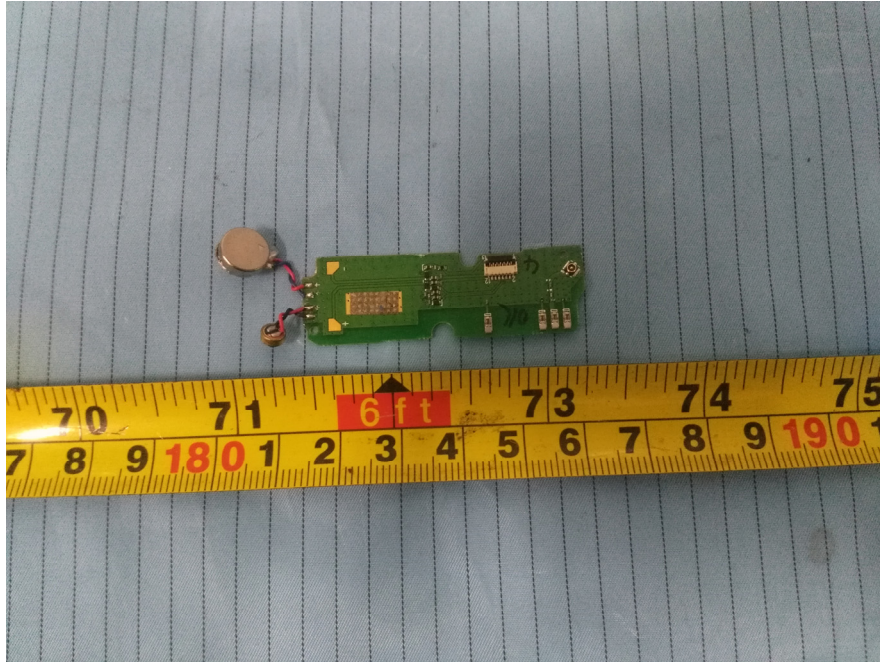
**EUT – Main Board 1 Bottom View**



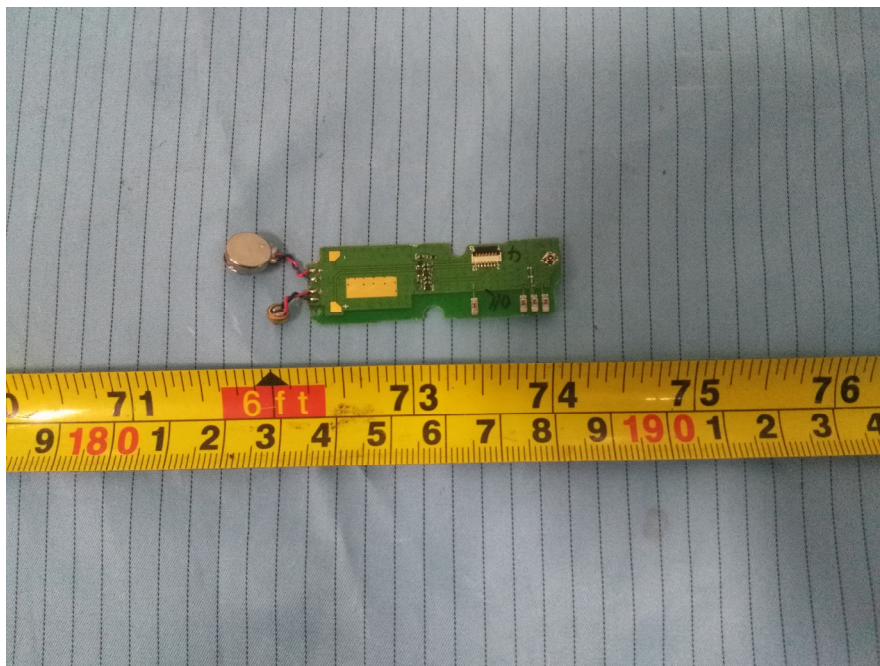
**EUT – Main Board 1 Bottom Shielding off View**



**EUT – Main Board 2 Top View**



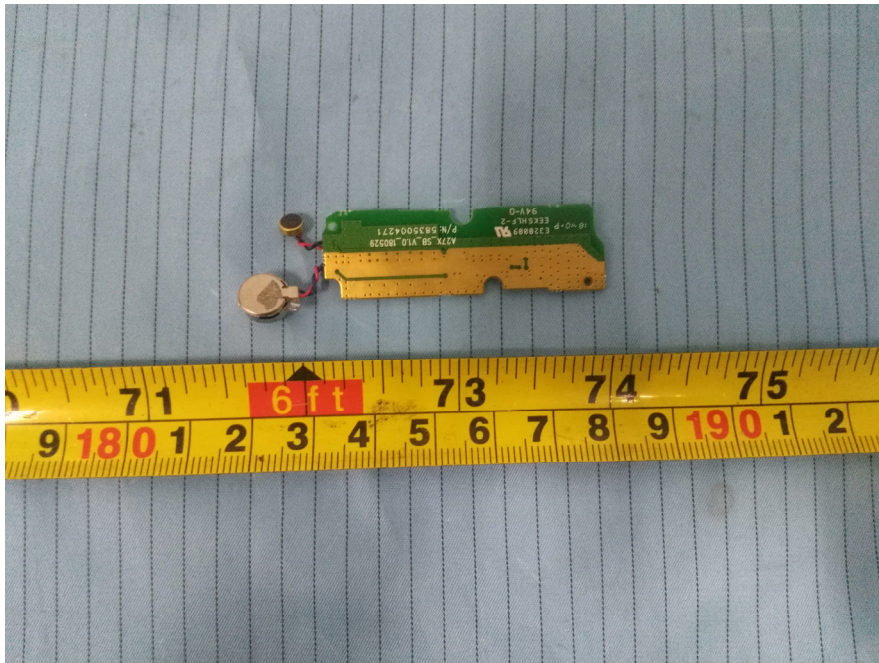
**EUT – Main Board 2 Top Shielding off View**



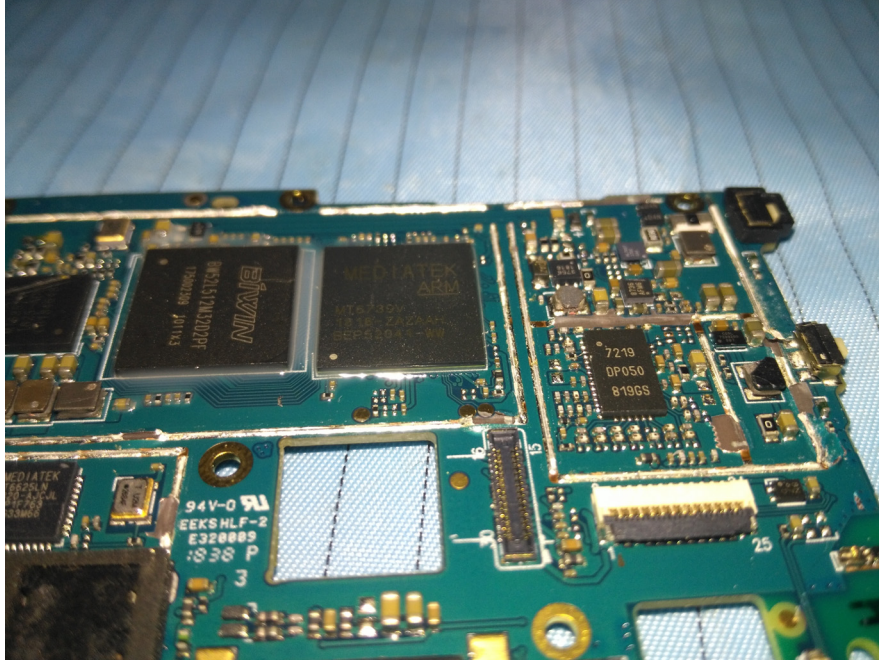
**EUT – Main Board 2 Bottom View**



**EUT – Main Board 2 Bottom Shielding off View**



**EUT – Main Chip View**



**EUT – Battery Top View**



### EUT – Battery Top Label View

**Panasonic**

Model : KLB400P396  
P/N : 5834005443  
Battery Type : Rechargeable Li-polymer Battery  
Rated : 3.85V 4000mAh 15.4Wh 1ICP5/59/81  
Made For Panasonic Made in China  
Use only Panasonic specified charger.

**NOTE:**  
Read instructions in operating guide before using the battery.

**WARNING:**  
Do not crush, puncture, short external contacts or dispose in fire or water. To reduce risk of fire or burns, do not attempt to open, disassemble, or service the battery pack. Do not expose to temperatures above 60°C (140°F).

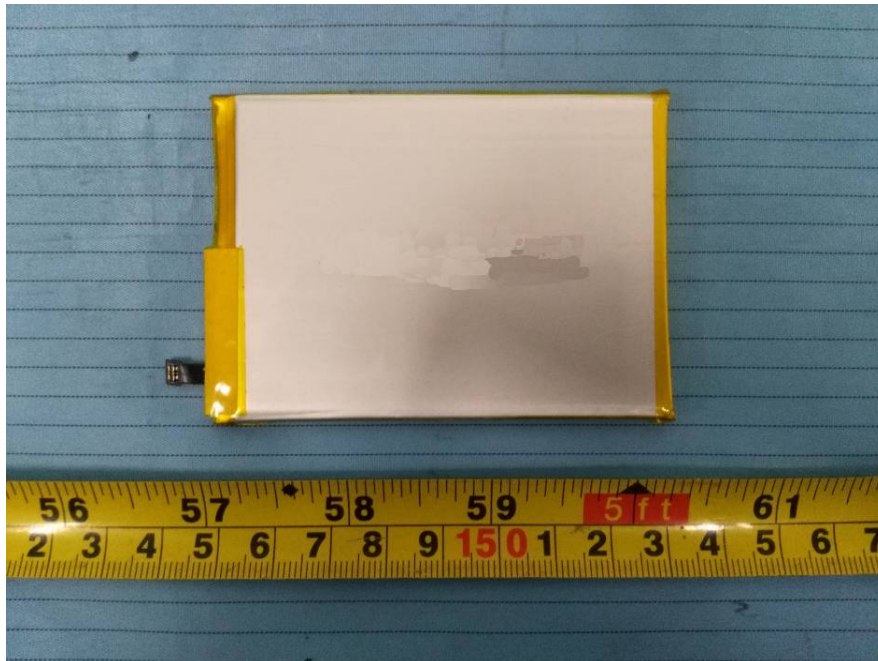
IS 16046/IEC 62133

R-41042153  
www.bis.gov.in

**CAUTION : Battery Not Removable**

### EUT – Battery Bottom View





**EUT – Battery Bottom Label View**

+ FHPV495981P 3.85V 4000mAh 15.4Wh  
1ICP5/59/81 Made in China  
– Rechargeable Li-polymer cell

Part no.KOSP4000E7E

FH18L2F00001