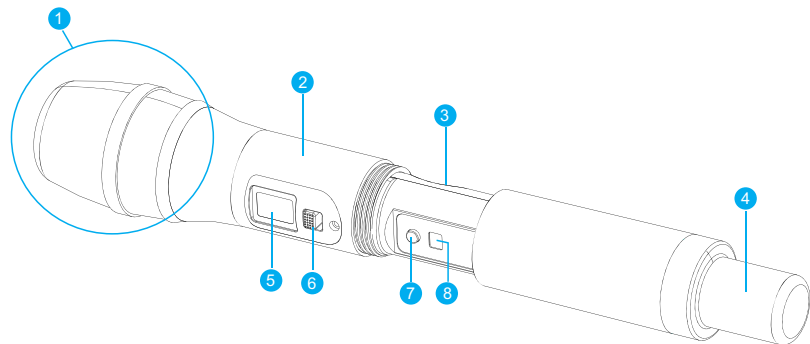
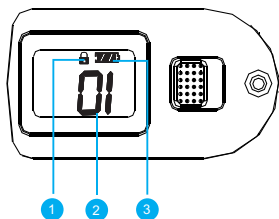


Hand Held Mic Transmitter FA-WT900-HH

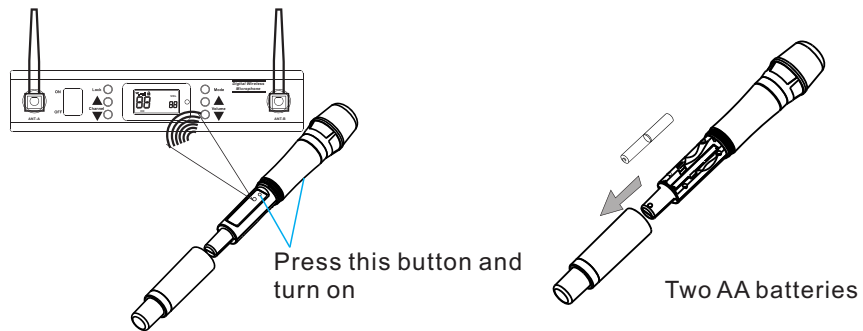


- 1 Microphone head .
- 2 Body of radio microhpne
- 3 BATTERY compartment (2AA)
- 4 Antenna position.
- 5 Disply ,backlit in green.
- 6 ON/OFF switch.
- 7 SET button.
- 8 IR sensor.

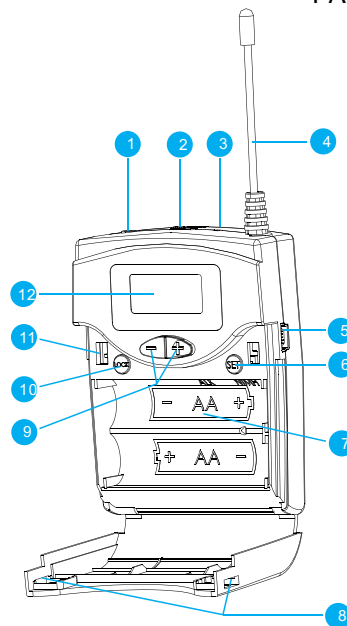


- 1 Lock indication.
- 2 Channel display.Infrared counterpart , Don't need to adjust.
- 3 Battery indicator.

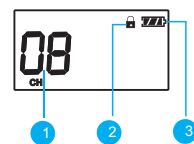
Screen instructions



Belt Pack Transmitter FA-WT900-BP

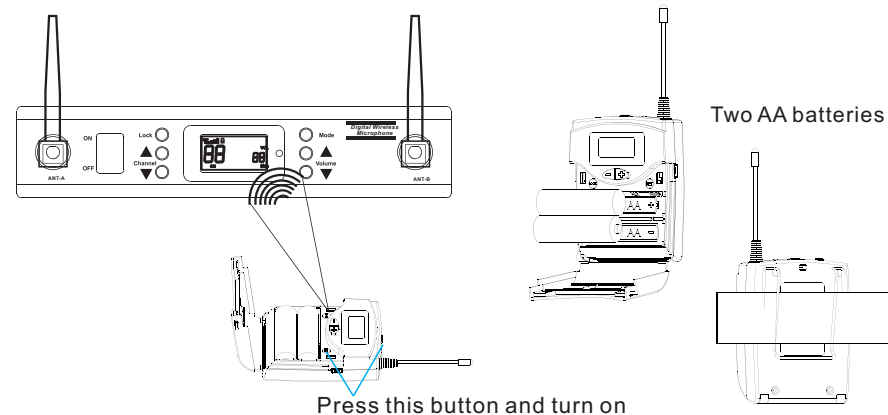


- 1 Mic in,3.5mm jack .
- 2 ON/OFF switch.
- 3 Charging LED.
- 4 Antenna .
- 5 Charging port,(via mini usb).
- 6 SET button.
- 7 Battery compartment.
- 8 Battery compartment latches.
- 9 "+/-" buttons .(This button is useless)
- 10 Lock button .(This button is useless)
- 11 IR sensor.
- 12 Disply ,backlit in green.

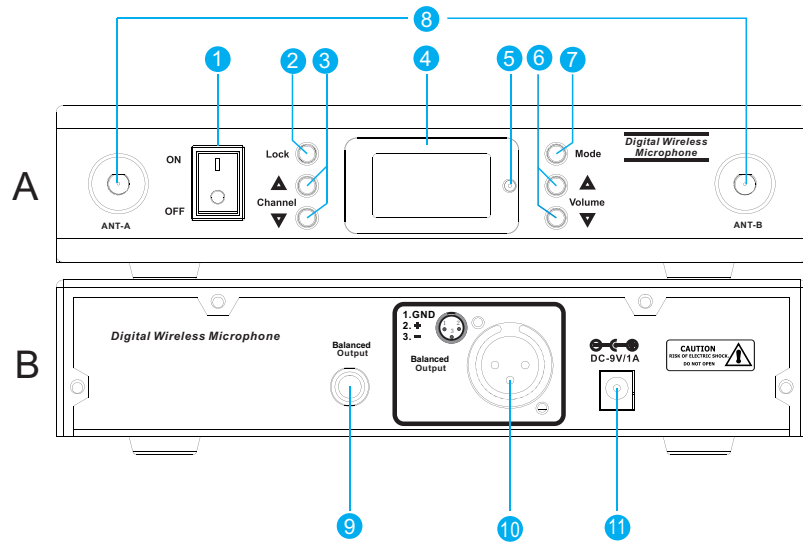


- 1 Channel display.Infrared counterpart , Don't need to adjust.
- 2 Lock indication.
- 3 Battery indicator.

Screen instructions



## Receiver instructions

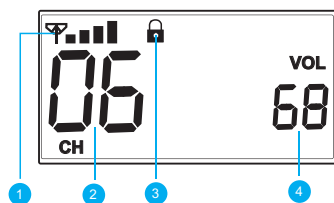


- ① ON/OFF switch.
- ② Lock button.
- ③ Channel +/- button.
- ④ Display, backlit in orange.
- ⑤ IR sensor.
- ⑥ Volume +/- button.
- ⑦ Mode button.
- ⑧ Antenna A&B.
- ⑨ Audio output (AF OUT BAL), 6.3mm jack, balanced.
- ⑩ Audio output (AF OUT BAL), XLR socket, balanced.
- ⑪ DC IN (3.5mm).

Changes or modifications not expressly approved by the party responsible for compliance could void the user's authority to operate the equipment.

Note: This equipment has been tested and found to comply with the limits for a Class B digital device, pursuant to part 15 of the FCC Rules. These limits are designed to provide reasonable protection against harmful interference in a residential installation. This equipment generates, uses and can radiate radio frequency energy and, if not installed and used in accordance with the instructions, may cause harmful interference to radio communications. However, there is no guarantee that interference will not occur in a particular installation. If this equipment does cause harmful interference to radio or television reception, which can be determined by turning the equipment off and on, the user is encouraged to try to correct the interference by one or more of the following measures:

- Reorient or relocate the receiving antenna.
- Increase the separation between the equipment and receiver.
- Connect the equipment into an outlet on a circuit different from that to which the receiver is connected.
- Consult the dealer or an experienced radio/TV technician for help.



Screen instructions

- ① Received signal strength indicator.
- ② Channel display, unlock press ▲▼ Channel. (A-③)
- ③ Lock indication, long press LOCK button. (A-②)
- ④ Volume display, press ▲▼ Volume button. (A-⑥)