



# **FCC TEST REPORT**

**FCC ID: 2APTA-FA-24AG-T100**

On Behalf of

**FLUENT AUDIO INC**

**Portable Audio Guide Transmitter**

**Model No.: FA-24AG-T100, OEM-24AG1PT, OEM-24AG2PT,  
OEM-24AG3PT, OEM-24AG4PT, OEM-24AG5PT,  
OEM-24AG6PT, OEM-24AG7PT, OEM-24AG8PT,  
OEM-24AG9PT, ARG-TXAG2400BP**

Prepared for : FLUENT AUDIO INC  
Address : 8362 TAMARACK VILLAGE SUITE# 119-252 WOODBURY,  
MINNESOTA 55125 USA

Prepared By : Shenzhen Alpha Product Testing Co., Ltd.  
Address : Building i, No.2, Lixin Road, Fuyong Street, Bao'an District,  
518103, Shenzhen, Guangdong, China

Report Number : A1912104-C01-R07  
Date of Receipt : December 26, 2019  
Date of Test : December 26, 2019-January 8, 2020  
Date of Report : January 8, 2020  
Version Number : V0

## TABLE OF CONTENTS

Description	Page
<b>1. Summary of Standards And Results .....</b>	<b>6</b>
1.1. Description of Standards and Results .....	6
<b>2. General Information .....</b>	<b>7</b>
2.1. Description of Device (EUT) .....	7
2.2. Accessories of Device (EUT) .....	8
2.3. Tested Supporting System Details .....	8
2.4. Block Diagram of connection between EUT and simulators.....	8
2.5. Test Mode Description.....	8
2.6. Test Conditions .....	9
2.7. Test Facility .....	9
2.8. Measurement Uncertainty .....	9
2.9. Test Equipment List.....	10
<b>3. Power Line Conducted Emission Test.....</b>	<b>11</b>
3.1. Block Diagram of Test Setup.....	11
3.2. Test Limits .....	11
3.3. Configuration of EUT on Test .....	12
3.4. Operating Condition of EUT .....	12
3.5. Test Procedure .....	12
3.6. Test Results .....	13
<b>4. Radiated Emission Test.....</b>	<b>16</b>
4.1. Block Diagram of Test Setup.....	16
4.2. Test Limit.....	17
4.3. Configuration of EUT on Test .....	18
4.4. Operating Condition of EUT .....	18
4.5. Test Procedure .....	18
4.6. Test Results .....	19
<b>5. Band Edge Test .....</b>	<b>25</b>
5.1. Block Diagram of Test Setup.....	25
5.2. Test Limit.....	25
5.3. Configuration of EUT on Test .....	26
5.4. Operating Condition of EUT .....	26
5.5. Test Procedure .....	26
5.6. Test Results .....	28
<b>6. Occupied bandwidth Test .....</b>	<b>30</b>
6.1. Block Diagram of Test Setup.....	30
6.2. Test Limit.....	30
6.3. Test Procedure .....	30
6.4. Test Results .....	30
<b>7. Antenna Requirement .....</b>	<b>32</b>
7.1. Standard Requirement.....	32
7.2. Antenna Connected Construction .....	32

---

7.3. Results.....	32
<b>8. Photograph.....</b>	<b>33</b>
8.1. Photos of Radiated Emission Test .....	33
8.2. Photos of Power Line Conducted Emission Test.....	34
<b>9. Photos of The EUT .....</b>	<b>35</b>

### TEST REPORT DECLARATION

Applicant : FLUENT AUDIO INC  
 Address : 8362 TAMARACK VILLAGE SUITE# 119-252 WOODBURY,  
 MINNESOTA 55125 USA  
 Manufacturer : FLUENT AUDIO INC  
 Address : 8362 TAMARACK VILLAGE SUITE# 119-252 WOODBURY,  
 MINNESOTA 55125 USA  
 EUT Description : Portable Audio Guide Transmitter  
 (A) Model No. : FA-24AG-T100, OEM-24AG1PT, OEM-24AG2PT,  
 OEM-24AG3PT, OEM-24AG4PT, OEM-24AG5PT,  
 OEM-24AG6PT, OEM-24AG7PT, OEM-24AG8PT,  
 OEM-24AG9PT, ARG-TXAG2400BP  
 (B) Trademark : N/A

Measurement Standard Used:

**FCC Rules and Regulations Part 15 Subpart C Section 15.249  
ANSI C63.10:2013**

The device described above is tested by Shenzhen Alpha Product Testing Co., Ltd. to determine the maximum emission levels emanating from the device and the severe levels of the device can endure and its performance criterion. The test results are contained in this test report and Shenzhen Alpha Product Testing Co., Ltd. is assumed full responsibility for the accuracy and completeness of test. Also, this report shows that the EUT is technically compliant with the FCC Part15 requirements.

This report applies to above tested sample only. This report shall not be reproduced in parts without written approval of Shenzhen Alpha Product Testing Co., Ltd.

Tested by (name + signature).....: Lucas Pang  
 Project Engineer



Approved by (name + signature).....: Simple Guan  
 Project Manager



Date of issue..... : January 8, 2020

**Revision History**

Revision	Issue Date	Revisions	Revised By
V0	January 8, 2020	Initial released Issue	Simple Guan

# 1. SUMMARY OF STANDARDS AND RESULTS

## 1.1. Description of Standards and Results

The EUT have been tested according to the applicable standards as referenced below:

<b>EMISSION</b>			
<b>Description of Test Item</b>	<b>Test Requirement</b>	<b>Standard Paragraph</b>	<b>Results</b>
Power Line Conducted Emission Test	FCC Part 15	Section 15.207	P
Spurious Emission Test	FCC Part 15	Section 15.249&15.209	P
Occupied bandwidth	FCC Part 15	Section 15. 249	P
Band edge Requirement	FCC Part 15	Section 15.249	P
Antenna Requirement	FCC Part 15	Section 15.203	P
Note: 1. P is an abbreviation for Pass. 2. F is an abbreviation for Fail. 3. N/A is an abbreviation for Not Applicable.			

## 2. GENERAL INFORMATION

### 2.1. Description of Device (EUT)

EUT Name	: Portable Audio Guide Transmitter
Trademark	: N/A
Model No.	: FA-24AG-T100, OEM-24AG1PT, OEM-24AG2PT, OEM-24AG3PT, OEM-24AG4PT, OEM-24AG5PT, OEM-24AG6PT, OEM-24AG7PT, OEM-24AG8PT, OEM-24AG9PT, ARG-TXAG2400BP
DIFF.	: There is no difference between the models except the appearance color. So all the test were performed on the model FA-24AG-T100.
Power supply	: DC 3.7V from battery, DC 5V from USB
Operation frequency	: 2405-2480MHz
Channel No.	: 16
Channel Separation	: 5MHz
Modulation type	: GFSK
Antenna Type	: Internal Antenna, Maximum Gain is 1dBi
Software version	: N/A
Hardware version	: N/A
Sample Type	: Prototype production
Note	: USB port only has charging function, no data transmission.

## 2.2. Accessories of Device (EUT)

Accessories1 : /  
 Manufacturer : /  
 Model : /  
 Power supply : /

## 2.3. Tested Supporting System Details

No.	Description	Manufacturer	Model	Serial Number	Note
1.	Notebook PC	ACER	N/A	N/A	N/A
2.	Earphone	N/A	N/A	N/A	N/A

## 2.4. Block Diagram of connection between EUT and simulators



## 2.5. Test Mode Description

Test mode:

Mode	Channel	Frequency (MHz)
GFSK	CH1	2405
GFSK	CH8	2440
GFSK	CH16	2480

Note:

1. The test was used to control EUT work in Continuous TX mode, and select test channel, wireless mode
2. The EUT has been tested as an independent unit. And Continual Transmitting in maximum power.
3. New battery is used during all tests.
4. For the relevant Conducted Measurement, the temporary antenna connector is used during the measurement. Antenna Connector Impedance: 50Ω , Cable Loss: 1.0 dB

Channel list:

Channel No.	Frequency (MHz)	Channel No.	Frequency (MHz)	Channel No.	Frequency (MHz)
<b>1</b>	<b>2405</b>	...	...	13	2465
2	2410	<b>8</b>	<b>2440</b>	14	2470
3	2415	...	...	15	2475
4	2420	...	...	<b>16</b>	<b>2480</b>



## 2.6. Test Conditions

Temperature range	21-25°C
Humidity range	40-75%
Pressure range	86-106kPa

## 2.7. Test Facility

Shenzhen Alpha Product Testing Co., Ltd.

Building i, No.2, Lixin Road, Fuyong Street, Bao'an District,  
518103, Shenzhen, Guangdong, China

June 21, 2018 File on Federal Communication Commission  
Registration Number: 293961

July 15, 2019 Certificated by IC  
Registration Number: CN0085

## 2.8. Measurement Uncertainty

(95% confidence levels, k=2)

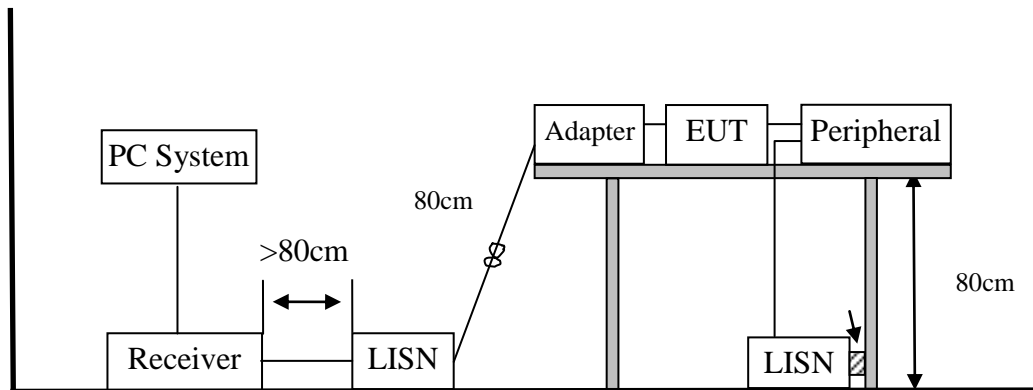
Item	Uncertainty
Uncertainty for Power point Conducted Emissions Test	2.74dB
Uncertainty for Radiation Emission test in 3m chamber (below 30MHz)	2.13 dB(Polarize: V)
	2.57dB(Polarize: H)
Uncertainty for Radiation Emission test in 3m chamber (30MHz to 1GHz)	3.77 dB (Distance: 3m Polarize: V)
	3.80 dB (Distance: 3m Polarize: H)
Uncertainty for Radiation Emission test in 3m chamber (1GHz to 25GHz)	4.13 dB (Distance: 3m Polarize: V)
	4.16 dB (Distance: 3m Polarize: H)
Uncertainty for radio frequency	$5.8 \times 10^{-8}$
Uncertainty for conducted RF Power	0.37dB
Uncertainty for temperature	0.2°C
Uncertainty for humidity	1%
Uncertainty for DC and low frequency voltages	0.06%

## 2.9. Test Equipment List

Equipment	Manufacture	Model No.	Serial No.	Last cal.	Cal Interval
9*6*6 anechoic chamber	CHENYU	9*6*6	N/A	2019.09.06	3Year
Spectrum analyzer	R&S	FSV40-N	102137	2019.09.05	1Year
Spectrum analyzer	Agilent	N9020A	MY499100060	2019.09.05	1Year
Receiver	R&S	ESR	1316.3003K03-102082-W a	2019.09.06	1Year
Receiver	R&S	ESCI	101165	2019.09.05	1Year
Bilog Antenna	Schwarzbeck	VULB 9168	VULB9168-438	2018.04.13	2Year
Horn Antenna	SCHWARZBECK	BBHA 9120 D	BBHA 9120 D(1201)	2018.04.13	2Year
Active Loop Antenna	SCHWARZBECK	FMZB 1519B	00059	2019.09.07	2Year
Cable	Resenberger	N/A	No.1	2019.09.05	1Year
Cable	Resenberger	N/A	No.2	2019.09.05	1Year
Cable	Resenberger	N/A	No.3	2019.09.05	1Year
Pre-amplifier	HP	HP8347A	2834A00455	2019.09.05	1Year
Pre-amplifier	Agilent	8449B	3008A02664	2019.09.05	1Year
L.I.S.N.#1	Schwarzbeck	NSLK8126	8126466	2019.09.05	1Year
L.I.S.N.#2	R&S	ENV216	101043	2019.09.05	1Year
20db Attenuator	ICPROBING	IATS1	82347	2019.08.26	1Year
Horn Antenna	SCHWARZBECK	BBHA9170	00946	2019.09.07	2Year
Preamplifier	SKET	LNPA_1840-50	SK2018101801	2019.09.06	1Year
Power Meter	Agilent	E9300A	MY41496625	2019.09.06	1Year
Temp. &Humid. Chamber	Weihuang	WHTH-1000-40-880	100631	2019.09.06	1Year
Switching Mode Power Supply	JUNKE	JK12010S	20140927-6	2019.09.05	1Year

### 3. POWER LINE CONDUCTED EMISSION TEST

#### 3.1. Block Diagram of Test Setup



#### 3.2. Test Limits

Frequency	Maximum RF Line Voltage	
	Quasi-Peak Level dB( $\mu$ V)	Average Level dB( $\mu$ V)
150kHz ~ 500kHz	66 ~ 56*	56 ~ 46*
500kHz ~ 5MHz	56	46
5MHz ~ 30MHz	60	50

- Notes:
1. Emission level=Read level + LISN factor-Preamplifier factor + Cable loss
  2. \* Decreasing linearly with logarithm of frequency.
  3. The lower limit shall apply at the transition frequencies.

### 3.3. Configuration of EUT on Test

The following equipment are installed on Power Line Conducted Emission Test to meet the commission requirement and operating regulations in a manner which tends to maximize its emission characteristics in a normal application.

### 3.4. Operating Condition of EUT

- (1) Setup the EUT as shown as Section 3.1.
- (2) Turn on the power of all equipment.
- (3) Let the EUT work in test mode taking the test.

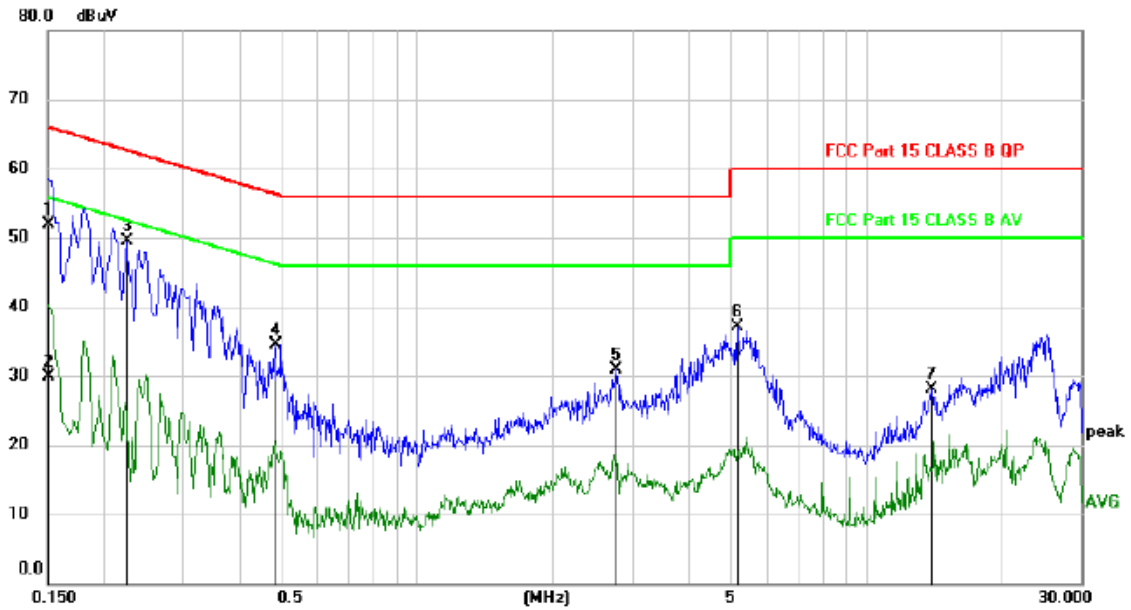
### 3.5. Test Procedure

- (1) The EUT was placed on a non-metallic table, 80cm above the ground plane. The EUT Power connected to the power mains through a line impedance stabilization network (L.I.S.N. 1#). This provided a 50-ohm coupling impedance for the EUT (Please refer to the block diagram of the test setup and photographs). The other peripheral devices power cord connected to the power mains through a line impedance stabilization network (L.I.S.N.#2). Both sides of power line were checked for maximum conducted interference. In order to find the maximum emission, the relative positions of equipments and all of the interface cables were changed according to ANSI C63.10:2013 on conducted Emission test.
- (2) The frequency range from 150kHz to 30MHz is checked, the bandwidth of test receiver is set at 9kHz.
- (3) The frequency range from 30MHz to 1000MHz was pre-scanned with a Peak detector and all final readings of measurement from Test Receiver are Quasi-Peak and Average values.
- (4) The test results are reported on Section 3.6.

### 3.6. Test Results

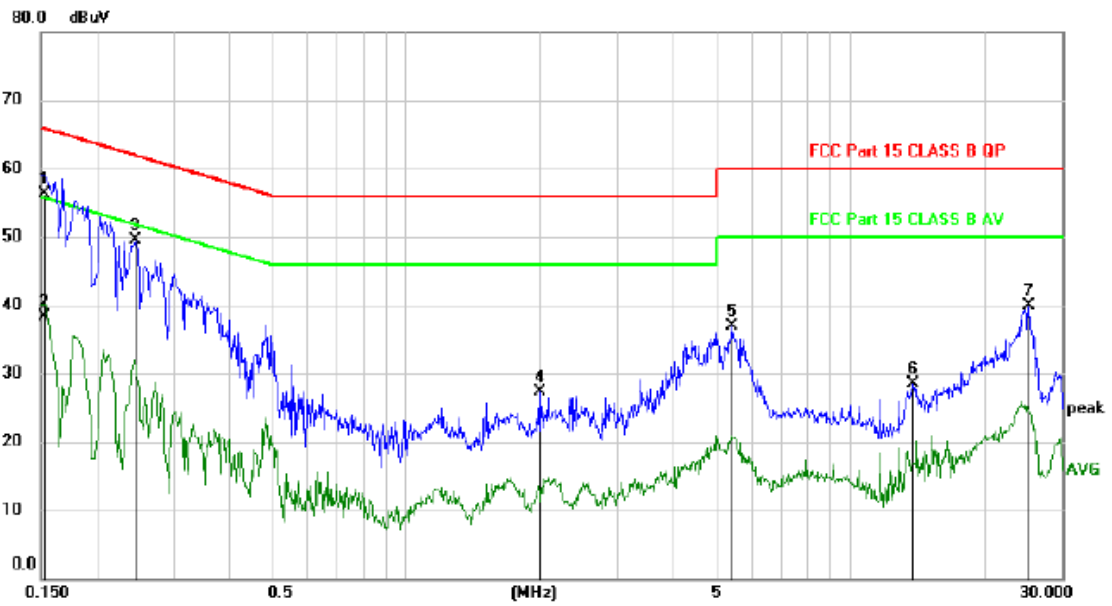
EUT	: Portable Audio Guide Transmitter	Test Date	: 2019.12.27
M/N	: FA-24AG-T100	Temperature	: 24°C
Test Engineer	: Lucas	Humidity	: 56%
Test Mode	: TX 2405MHz		
Test Voltage	: DC 5V from USB (Notebook PC with AC 120V/60Hz)		
Note:	1. The test results are listed in next pages.		
	2. This mode is worst case mode, and this report only reflected the worst mode.		
	3. If the limits for the measurement with the average detector are met when using a receiver with a peak detector, the test unit shall be deemed to meet both limits and the measurement with the average detector and quasi-peak detector need not be carried out.		
	4. If the limits for the measurement with the average detector are met when using a receiver with a quasi-peak detector, the test unit shall be deemed to meet both limits and the measurement with the average detector need not be carried out.		

**Phase: L**



No.	Mk.	Freq. MHz	Reading Level dBuV	Correct Factor dB	Measure- ment dBuV	Limit dBuV	Margin dB	Detector	Comment
1		0.1500	42.05	9.94	51.99	66.00	-14.01	QP	
2		0.1500	20.05	9.94	29.99	56.00	-26.01	AVG	
3	*	0.2250	39.61	9.94	49.55	62.63	-13.08	peak	
4		0.4830	24.56	9.96	34.52	56.29	-21.77	peak	
5		2.7659	20.90	9.94	30.84	56.00	-25.16	peak	
6		5.1510	27.12	10.05	37.17	60.00	-22.83	peak	
7		13.9710	17.70	10.31	28.01	60.00	-31.99	peak	

## Phase: N

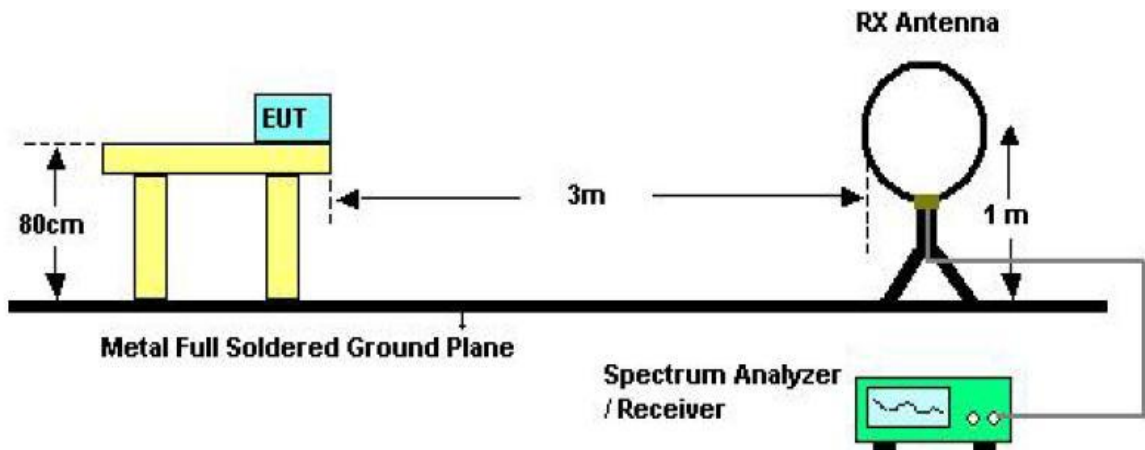


No.	Mk.	Freq. MHz	Reading Level dBuV	Correct Factor dB	Measure- ment dBuV	Limit dBuV	Margin dB	Detector	Comment
1	*	0.1530	46.40	9.94	56.34	65.84	-9.50	QP	
2		0.1530	28.31	9.94	38.25	55.84	-17.59	AVG	
3		0.2460	39.59	9.97	49.56	61.89	-12.33	peak	
4		1.9920	17.44	9.88	27.32	56.00	-28.68	peak	
5		5.4030	26.93	10.06	36.99	60.00	-23.01	peak	
6		13.8870	18.19	10.30	28.49	60.00	-31.51	peak	
7		25.2090	29.52	10.45	39.97	60.00	-20.03	peak	

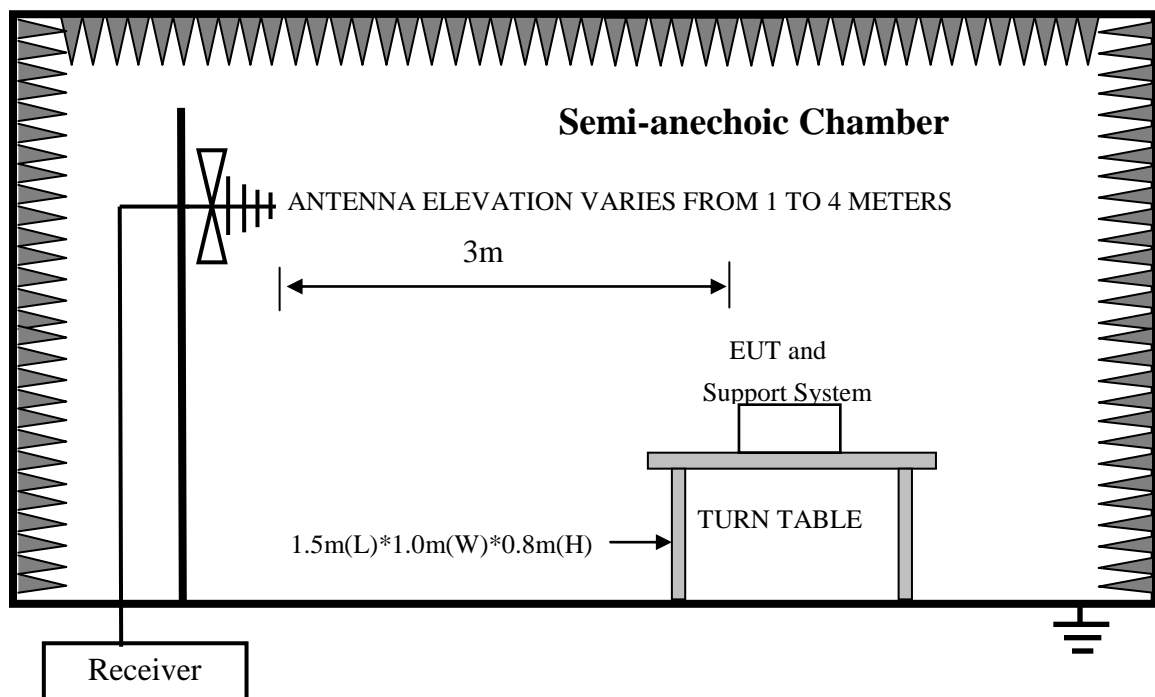
## 4. RADIATED EMISSION TEST

### 4.1. Block Diagram of Test Setup

In Semi Anechoic Chamber (3m) Test Setup Diagram for 9KHz~30MHz

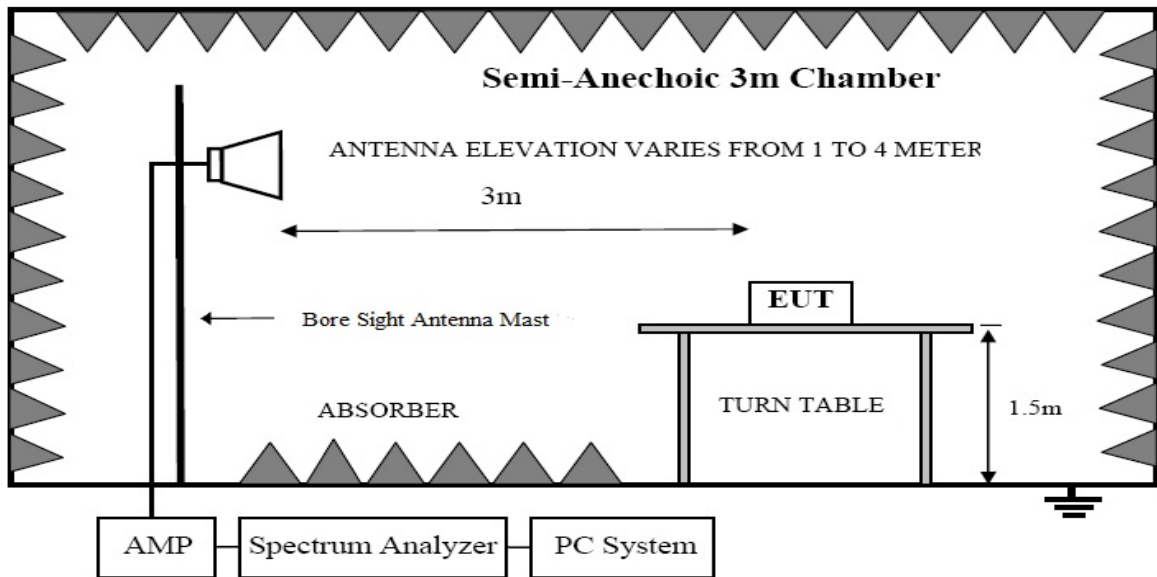


In Semi Anechoic Chamber (3m) Test Setup Diagram for 30MHz~1000MHz





In Semi Anechoic Chamber (3m) Test Setup Diagram for Above 1GHz



4.2. Test Limit

Frequency MHz	Distance (Meters)	Field Strengths Limits	
		uV/m	dB uV/m
0.009 ~ 0.490	300	2400/F(kHz)	---
0.490 ~ 1.705	30	24000/F(kHz)	----
1.705 ~ 30	30	30	29.5
30 ~ 88	3	100(3nW)	40
88 ~ 216	3	150(6.8nW)	43.5
216 ~ 960	3	200(12nW)	46
Above 960	3	500(75nW)	54
Carrier frequency	3	50000(avg)	113.97(peak) 93.97(avg)

Notes:

1. Emission level = Read level + Antenna Factor - Preamp Factor + Cable Loss
2. The smaller limit shall apply at the cross point between two frequency bands.
3. Distance is the distance in meters between the measuring instrument, antenna and the closest point of any part of the device or system.
4. For frequencies above 1000 MHz, the field strength limits are based on average limits. However, the peak field strength of any emission shall not exceed the maximum permitted average limits specified above by more than 20 dB under any condition of modulation.

### 4.3. Configuration of EUT on Test

The following equipment are installed on Radiated Emission Test to meet the commission requirements and operating regulations in a manner that tends to maximize its emission characteristics in normal application.

### 4.4. Operating Condition of EUT

- (1) Setup the EUT as shown as Section 4.1.
- (2) Turn on the power of all equipment.
- (3) Let the EUT work in test mode taking the test.

### 4.5. Test Procedure

- (1) The EUT was placed on a non-metallic table, 80 cm above the ground plane inside a semi-anechoic chamber for below 1GHz and 150 cm above the ground plane inside a semi-anechoic chamber for above 1GHz. An antenna was located 3m from the EUT on an adjustable mast. A pre-scan was first performed in order to find prominent radiated emissions. For final emissions measurements at each frequency of interest, the EUT were rotated and the antenna height was varied between 1m and 4m in order to maximize the emission. Measurements in both horizontal and vertical polarities were made and the data was recorded. In order to find the maximum emission, the relative positions of equipments and all of the interface cables were changed according to ANSI C63.10: 2013 on Radiated Emission test.
- (2) For the radiated emission test above 1GHz:  
Place the measurement antenna away from each area of the EUT determined to be a source of emissions at the specified measurement distance, while keeping the measurement antenna aimed at the source of emissions at each frequency of significant emissions, with polarization oriented for maximum response. The measurement antenna may have to be higher or lower than the EUT, depending on the radiation pattern of the emission and staying aimed at the emission source for receiving the maximum signal. The final measurement antenna elevation shall be that which maximizes the emissions. The measurement antenna elevation for maximum emissions shall be restricted to a range of heights of from 1 m to 4 m above the ground or reference ground plane.
- (3) Test antenna was located 4m from the EUT on an adjustable mast. Below pre-scan procedure was first performed in order to find prominent radiated emissions.
  - (a) Change work frequency or channel of device if practicable.
  - (b) Change modulation type of device if practicable.
  - (c) Rotated EUT though three orthogonal axes to determine the attitude of EUT arrangement produces highest emissions
- (4) For harmonic emissions test a appropriate high pass filter was inserted in the input port of AMP
- (5) The frequency range from 9KHz to 150KHz is checked, the bandwidth of test receiver is

set at 200Hz.

The frequency range from 150KHz to 30MHz is checked, the bandwidth of test receiver is set at 9KHz.

The frequency range from 30MHz to 1000MHz is checked, the bandwidth of test receiver is set at 120kHz.

The frequency range from above 1GHz is checked, the bandwidth of Signal Analyzer is set at 1MHz.

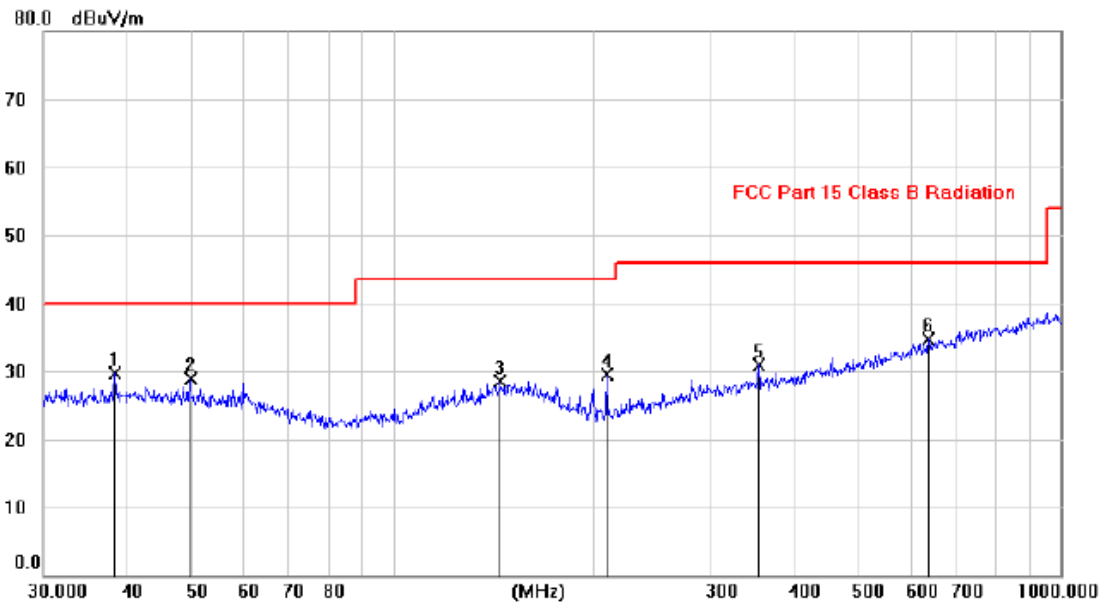
- (6) The frequency range from 30MHz to 1000MHz was pre-scanned with a peak detector and all final readings of measurement from Test Receiver are Quasi-Peak values, the frequency range from 1GHz to 6GHz was pre-scanned with a peak detector and all final readings of measurement from Spectrum Analyzer are peak and average values checked, all measurement distance is 3m in 3m semi anechoic chamber.
- (7) Test for all x, y, z axes is performed and only the worst case of X axes was recorded in the test report.
- (8) The test results are reported on Section 4.6.

#### 4.6. Test Results

Frequency Range : <b>9KHz~30MHz</b>	
EUT : Portable Audio Guide Transmitter	Test Date : 2019.12.26
M/N : FA-24AG-T100	Temperature : 24°C
Test Engineer : Lucas	Humidity : 56%
Test Mode : TX 2405MHz	
Test Results : <b>PASS</b>	
Note: 1. Note: The amplitude of spurious emissions which are attenuated by more than 20dB below the permissible value has no need to be reported.	

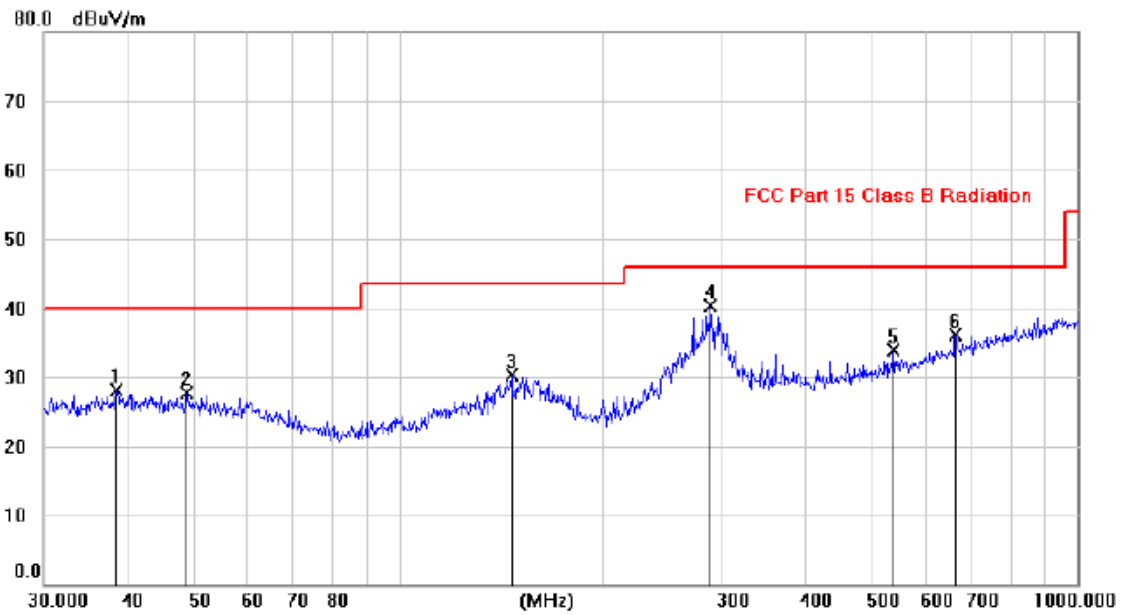
Frequency Range : <b>30MHz~1000MHz`</b>	
EUT : Portable Audio Guide Transmitter	Test Date : 2019.12.26
M/N : FA-24AG-T100	Temperature : 24°C
Test Engineer : Lucas	Humidity : 56%
Test Mode : TX 2405MHz	
Test Results : <b>PASS</b>	
Note: 1. The test results are listed in next pages. 2. This mode is worst case mode, and this report only reflected the worst mode. 3. If the limits for the measurement with the quasi-peak detector are met when using a receiver with a peak detector, the test unit shall be deemed to meet both limits and the measurement with the quasi-peak detector need not be carried out.	

Vertical:



No.	Mk.	Freq. MHz	Reading Level dBuV	Correct Factor dB	Measure- ment dBuV/m	Limit dBuV/m	Margin dB	Antenna Height cm	Table Degree	Comment
1	*	38.4304	15.50	14.28	29.78	40.00	-10.22	peak		
2		49.7286	14.97	13.99	28.96	40.00	-11.04	peak		
3		145.1595	13.84	14.66	28.50	43.50	-15.00	peak		
4		210.0482	18.40	11.08	29.48	43.50	-14.02	peak		
5		353.4078	15.58	15.26	30.84	46.00	-15.16	peak		
6		634.7414	13.88	20.88	34.76	46.00	-11.24	peak		

Horizontal:



No.	Mk.	Freq. MHz	Reading Level dBuV	Correct Factor dB	Measure- ment dBuV/m	Limit dBuV/m	Margin dB	Detector	Antenna Height cm	Table Degree	Comment
1		38.3631	13.78	14.25	28.03	40.00	-11.97	peak			
2		48.7146	13.76	14.00	27.76	40.00	-12.24	peak			
3		146.4377	15.49	14.74	30.23	43.50	-13.27	peak			
4	*	288.1167	26.58	13.76	40.34	46.00	-5.66	peak			
5		536.1772	15.04	18.93	33.97	46.00	-12.03	peak			
6		662.0203	14.88	21.26	36.14	46.00	-9.86	peak			

Frequency Range : <b>1GHz~25GHz</b>								
EUT : Portable Audio Guide Transmitter					Test Date : 2019.12.26			
M/N : FA-24AG-T100					Temperature : 24°C			
Test Engineer : Lucas					Humidity : 56%			
Test Mode : TX 2405MHz								
Test Results : <b>PASS</b>								
No.	Freq MHz	Polarity	Reading (dBuV/m)	Correct Factor	Result (dBuV/m)	Limit (dBuV/m)	Margin	Remark
1	2405	H	95.94	-3.38	92.56	113.97	-21.41	Peak
2	2405	H	87.15	-3.38	83.77	93.97	-10.20	Avg
3	4810	H	43.91	3.23	47.14	74	-26.86	Peak
4	4810	H	--	3.23	--	54	--	Avg
5	7215	H	41.49	10.57	52.06	74	-21.94	Peak
6	7215	H	--	10.57	--	54	--	Avg
1	2405	V	98.17	-3.38	94.79	113.97	-19.18	Peak
2	2405	V	85.40	-3.38	82.02	93.97	-11.95	Avg
3	4810	V	42.86	3.23	46.09	74	-27.91	Peak
4	4810	V	--	3.23	--	54	--	Avg
5	7215	V	42.33	10.57	52.90	74	-21.10	Peak
6	7215	V	--	10.57	--	54	--	Avg
Note:	<p>1. Means other frequency and mode comply with standard requirements and at least have 20dB margin.</p> <p>2. Correct Factor=Cable Loss+ Antenna Factor-Amplifier Gain. Result=Reading + Correct Factor. Margin= Result-Limit.</p> <p>3. Spectrum Set for PK measure: RBW=1MHz, VBW=1MHz, Sweep time=Auto, Detector: PK.</p> <p>4. Spectrum Set for AV measure: RBW=1MHz, VBW=3MHz, Sweep time=Auto, Detector: Avg.</p> <p>5. If the limits for the measurement with the average detector are met when using a receiver with a peak detector, the test unit shall be deemed to meet both limits and the measurement with the average detector need not be carried out.</p>							

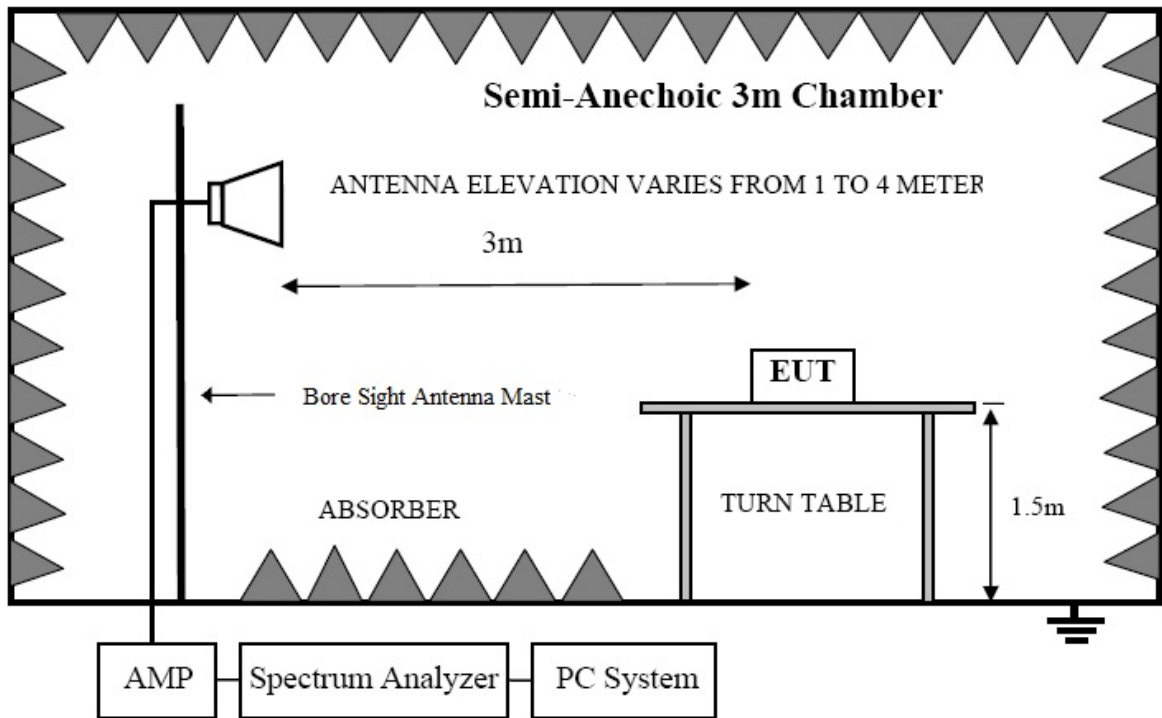
Frequency Range : <b>1GHz~25GHz</b>								
EUT : Portable Audio Guide Transmitter					Test Date : 2019.12.26			
M/N : FA-24AG-T100					Temperature : 24°C			
Test Engineer : Lucas					Humidity : 56%			
Test Mode : TX 2440MHz								
Test Results : <b>PASS</b>								
No.	Freq MHz	Polarity	Reading (dBuV/m)	Correct Factor	Result (dBuV/m)	Limit (dBuV/m)	Margin	Remark
1	2440	H	98.86	-3.38	95.48	113.97	-18.49	Peak
2	2440	H	87.09	-3.38	83.71	93.97	-10.26	Avg
3	4880	H	44.56	3.23	47.79	74	-26.21	Peak
4	4880	H	--	3.23	--	54	--	Avg
5	7320	H	38.98	10.57	49.55	74	-24.45	Peak
6	7320	H	--	10.57	--	54	--	Avg
1	2440	V	98.90	-3.38	95.52	113.97	-18.45	Peak
2	2440	V	87.14	-3.38	83.76	93.97	-10.21	Avg
3	4880	V	42.75	3.23	45.98	74	-28.02	Peak
4	4880	V	--	3.23	--	54	--	Avg
5	7320	V	41.45	10.57	52.02	74	-21.98	Peak
6	7320	V	--	10.57	--	54	--	Avg
Note:	<p>1. Means other frequency and mode comply with standard requirements and at least have 20dB margin.</p> <p>2. Correct Factor=Cable Loss+ Antenna Factor-Amplifier Gain. Result=Reading + Correct Factor. Margin= Result-Limit.</p> <p>3. Spectrum Set for PK measure: RBW=1MHz, VBW=1MHz, Sweep time=Auto, Detector: PK.</p> <p>4. Spectrum Set for AV measure: RBW=1MHz, VBW=3MHz, Sweep time=Auto, Detector: Avg.</p> <p>5. If the limits for the measurement with the average detector are met when using a receiver with a peak detector, the test unit shall be deemed to meet both limits and the measurement with the average detector need not be carried out.</p>							

Frequency Range : <b>1GHz~25GHz</b>								
EUT : Portable Audio Guide Transmitter					Test Date : 2019.12.26			
M/N : FA-24AG-T100					Temperature : 24°C			
Test Engineer : Lucas Pang					Humidity : 56%			
Test Mode : TX 2480MHz								
Test Results : <b>PASS</b>								
No.	Freq MHz	Polarity	Reading (dBuV/m)	Correct Factor	Result (dBuV/m)	Limit (dBuV/m)	Margin	Remark
1	2480	H	97.99	-3.38	94.61	113.97	-19.36	Peak
2	2480	H	87.69	-3.38	84.31	93.97	-9.66	Avg
3	4960	H	45.80	3.23	49.03	74	-24.97	Peak
4	4960	H	--	3.23	--	54	--	Avg
5	7440	H	40.75	10.57	51.32	74	-22.68	Peak
6	7440	H	--	10.57	--	54	--	Avg
1	2480	V	96.45	-3.38	93.07	113.97	-20.90	Peak
2	2480	V	87.34	-3.38	83.96	93.97	-10.01	Avg
3	4960	V	45.35	3.23	48.58	74	-25.42	Peak
4	4960	V	--	3.23	--	54	--	Avg
5	7440	V	42.17	10.57	52.74	74	-21.26	Peak
6	7440	V	--	10.57	--	54	--	Avg
Note:	<p>1. Means other frequency and mode comply with standard requirements and at least have 20dB margin.</p> <p>2. Correct Factor=Cable Loss+ Antenna Factor-Amplifier Gain. Result=Reading + Correct Factor. Margin= Result-Limit.</p> <p>3. Spectrum Set for PK measure: RBW=1MHz, VBW=1MHz, Sweep time=Auto, Detector: PK.</p> <p>4. Spectrum Set for AV measure: RBW=1MHz, VBW=3MHz, Sweep time=Auto, Detector: Avg.</p> <p>5. If the limits for the measurement with the average detector are met when using a receiver with a peak detector, the test unit shall be deemed to meet both limits and the measurement with the average detector need not be carried out.</p>							



## 5. BAND EDGE TEST

### 5.1. Block Diagram of Test Setup



### 5.2. Test Limit

Please refer section 15.249 and section 15.205.

249(d) Emissions radiated outside of the specified frequency bands, except for harmonics, shall be attenuated by at least 50 dB below the level of the fundamental or to the general radiated emission limits in section 15.209, whichever is the lesser attenuation.

249(e) As show in section 15.35(b), for frequencies above 1000MHz, the above field strength limits in paragraphs (a) and (b) of this section are based on average limits. However, the peak field strength of any emission shall not exceed the maximum permitted average limits specified above by more than 20 dB under any condition of modulation. For point-to-point operation under paragraph (b) of this section, the peak filed strength shall not exceed 2500 millivolts/meter at 3meters along the antenna azimuth.

### 5.3. Configuration of EUT on Test

The following equipment are installed on Radiated Emission Test to meet the commission requirements and operating regulations in a manner that tends to maximize its emission characteristics in normal application.

### 5.4. Operating Condition of EUT

- (1) Setup the EUT as shown as Section 5.1.
- (2) Turn on the power of all equipment.
- (3) Let the EUT work in test mode taking the test.

### 5.5. Test Procedure

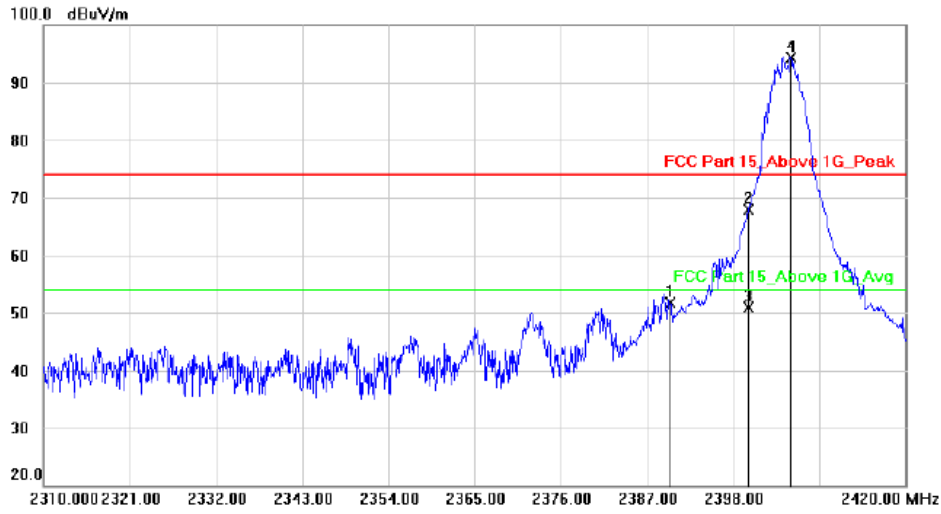
- (1) The EUT was placed on a non-metallic table, 150 cm above the ground plane inside a semi-anechoic chamber. An antenna was located 3m from the EUT on an adjustable mast. A pre-scan was first performed in order to find prominent radiated emissions. For final emissions measurements at each frequency of interest, the EUT were rotated and the antenna height was varied between 1m and 4m in order to maximize the emission. Measurements in both horizontal and vertical polarities were made and the data was recorded. In order to find the maximum emission, the relative positions of equipments and all of the interface cables were changed according to ANSI C63.10: 2013 on Radiated Emission test.
- (2) For the radiated emission test above 1GHz:  
Place the measurement antenna away from each area of the EUT determined to be a source of emissions at the specified measurement distance, while keeping the measurement antenna aimed at the source of emissions at each frequency of significant emissions, with polarization oriented for maximum response. The measurement antenna may have to be higher or lower than the EUT, depending on the radiation pattern of the emission and staying aimed at the emission source for receiving the maximum signal. The final measurement antenna elevation shall be that which maximizes the emissions. The measurement antenna elevation for maximum emissions shall be restricted to a range of heights of from 1 m to 4 m above the ground or reference ground plane.
- (3) Test antenna was located 4m from the EUT on an adjustable mast. Below pre-scan procedure was first performed in order to find prominent radiated emissions.
  - (a) Change work frequency or channel of device if practicable.
  - (b) Change modulation type of device if practicable.
  - (c) Rotated EUT though three orthogonal axes to determine the attitude of EUT arrangement produces highest emissions

- (5) The frequency range from above 1GHz is checked, the bandwidth of Signal Analyzer is set at 1MHz.
- (6) The frequency range from 1GHz to 6GHz was pre-scanned with a peak detector and all final readings of measurement from Spectrum Analyzer are peak and average values checked, all measurement distance is 3m in 3m semi anechoic chamber.
- (7) Test for all x, y, z axes is performed and only the worst case of X axes was recorded in the test report.
- (8) The test results are reported on Section 5.6.

### 5.6. Test Results

Polarization: Vertical

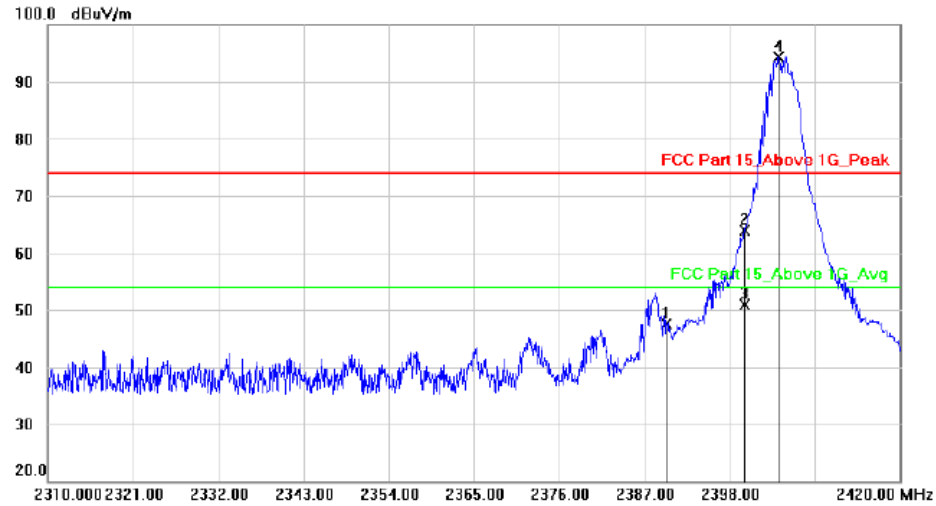
Test Mode: TX 2405MHz



No.	Mk.	Freq.	Reading Level	Correct Factor	Measurement	Limit	Margin	Antenna Height	Table Degree	
		MHz	dBuV	dB	dBuV/m	dBuV/m	dB	cm	degree	Comment
1		2390.000	67.45	-15.77	51.68	74.00	-22.32	peak		
2		2400.000	83.77	-15.78	67.99	74.00	-6.01	peak		
3		2400.000	66.66	-15.78	50.88	54.00	-3.12	AVG		
4	*	2405.436	110.00	-15.77	94.23	74.00	20.23	peak		

Polarization: Horizontal

Test Mode: TX 2405MHz

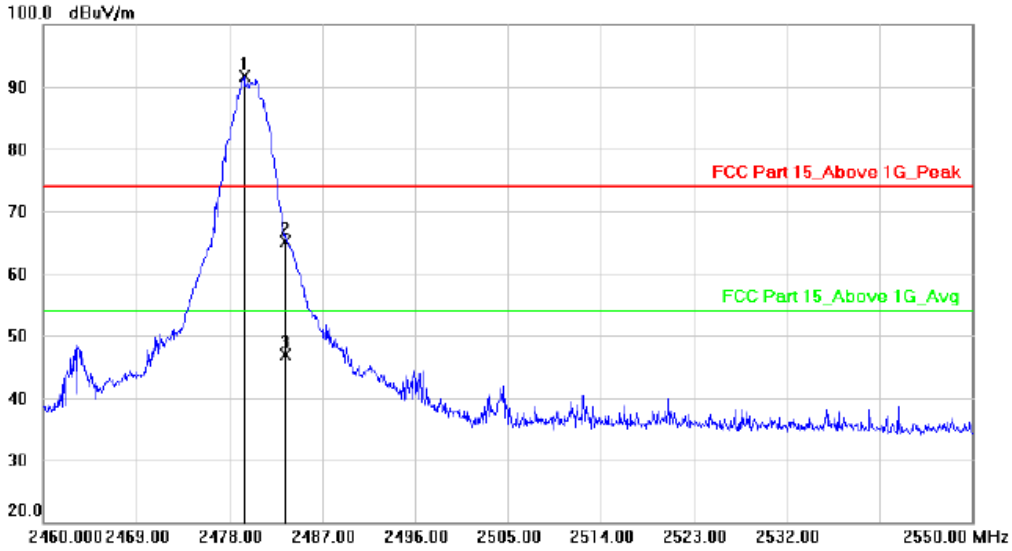


No.	Mk.	Freq.	Reading Level	Correct Factor	Measurement	Limit	Margin	Antenna Height	Table Degree	
		MHz	dBuV	dB	dBuV/m	dBuV/m	dB	cm	degree	Comment
1		2390.000	63.30	-15.77	47.53	74.00	-26.47	peak		
2		2400.000	79.66	-15.78	63.88	74.00	-10.12	peak		
3		2400.000	66.65	-15.78	50.87	54.00	-3.13	AVG		
4	*	2404.402	110.00	-15.77	94.23	74.00	20.23	peak		

Polarization: Vertical

Test Mode:

TX 2480MHz

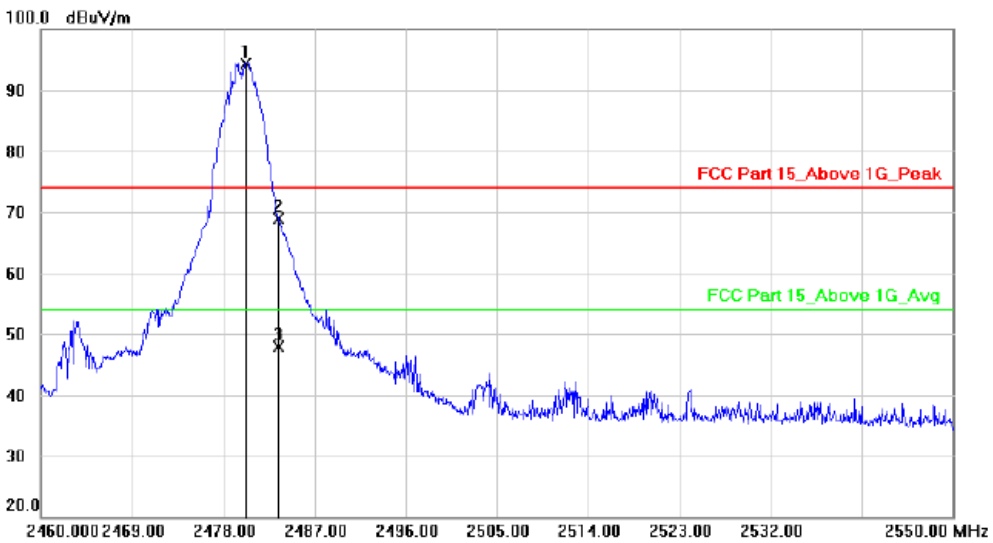


No.	Mk.	Freq.	Reading Level	Correct Factor	Measurement	Limit	Margin	Antenna Height	Table Degree	
		MHz	dBuV	dB	dBuV/m	dBuV/m	dB	cm	degree	Comment
1	*	2479.494	107.45	-15.69	91.76	74.00	17.76			peak
2		2483.500	80.83	-15.68	65.15	74.00	-8.85			peak
3		2483.500	62.50	-15.68	46.82	54.00	-7.18			AVG

Polarization: Horizontal

Test Mode:

TX 2480MHz



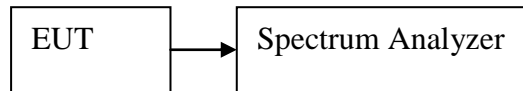
No.	Mk.	Freq.	Reading Level	Correct Factor	Measurement	Limit	Margin	Antenna Height	Table Degree	
		MHz	dBuV	dB	dBuV/m	dBuV/m	dB	cm	degree	Comment
1	*	2480.223	109.99	-15.69	94.30	74.00	20.30			peak
2		2483.500	84.60	-15.68	68.92	74.00	-5.08			peak
3		2483.500	63.54	-15.68	47.86	54.00	-6.14			AVG

Note: 1. \*:Maximum data; x:Over limit; !:over margin.

2.Measurement=Reading Level+Correct Factor; Correct Factor=Antenna Factor+Cable Loss.

## 6. OCCUPIED BANDWIDTH TEST

### 6.1. Block Diagram of Test Setup



### 6.2. Test Limit

Please refer section 15.249 and section 15.205.

### 6.3. Test Procedure

- (1) The bandwidth is measured at an amplitude level reduced 20dB from the reference level. The reference level is the level of the highest amplitude signal observed from the transmitter at the fundamental frequency. Once the reference level is established, the equipment is conditioned with typical modulating signal to produce the worst-case (i.e. the widest) bandwidth.
- (2) The test receiver RBW set 30KHz, VBW set 100KHz, Sweep time set auto.

### 6.4. Test Results

Mode		Frequency MHz	20dB Bandwidth (MHz)	99% Bandwidth (MHz)	Limit (kHz)
GFSK	ANT1	2405	3.553	3.5157	/
		2440	2.989	3.5905	/
		2480	3.562	3.6604	/

Note: 1. The test results are listed in next pages.

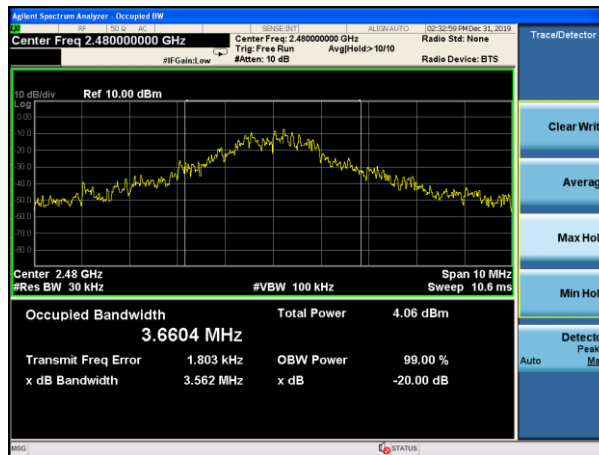
Frequency: 2405MHz



Frequency: 2440MHz



Frequency: 2480MHz



---

## **7. ANTENNA REQUIREMENT**

### **7.1. Standard Requirement**

An intentional radiator shall be designed to ensure that no antenna other than that furnished by the responsible party shall be used with the device. The use of a permanently attached antenna or of an antenna that uses a unique coupling to the intentional radiator shall be considered sufficient to comply with the provisions of this Section. The manufacturer may design the unit so that a broken antenna can be replaced by the user, but the use of a standard antenna jack or electrical connector is prohibited.

### **7.2. Antenna Connected Construction**

The directional gains of antenna used for transmitting is 1dBi, and the antenna is fixed antenna no consideration of replacement. Please see EUT photo for details.

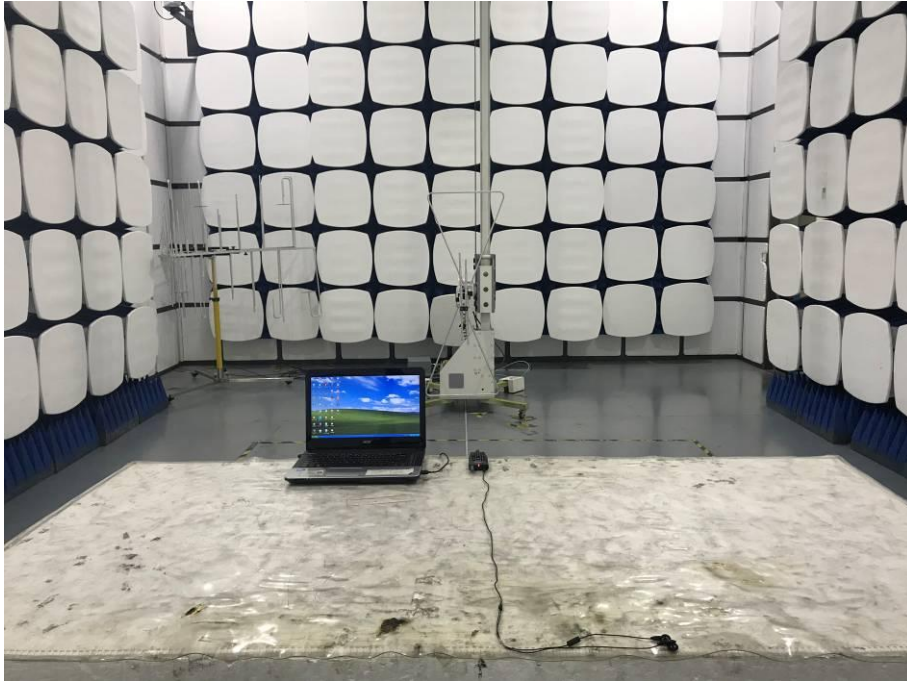
### **7.3. Results**

The EUT antenna is Internal Antenna. It complies with the standard requirement.



## 8. PHOTOGRAPH

### 8.1.Photos of Radiated Emission Test



## 8.2.Photos of Power Line Conducted Emission Test

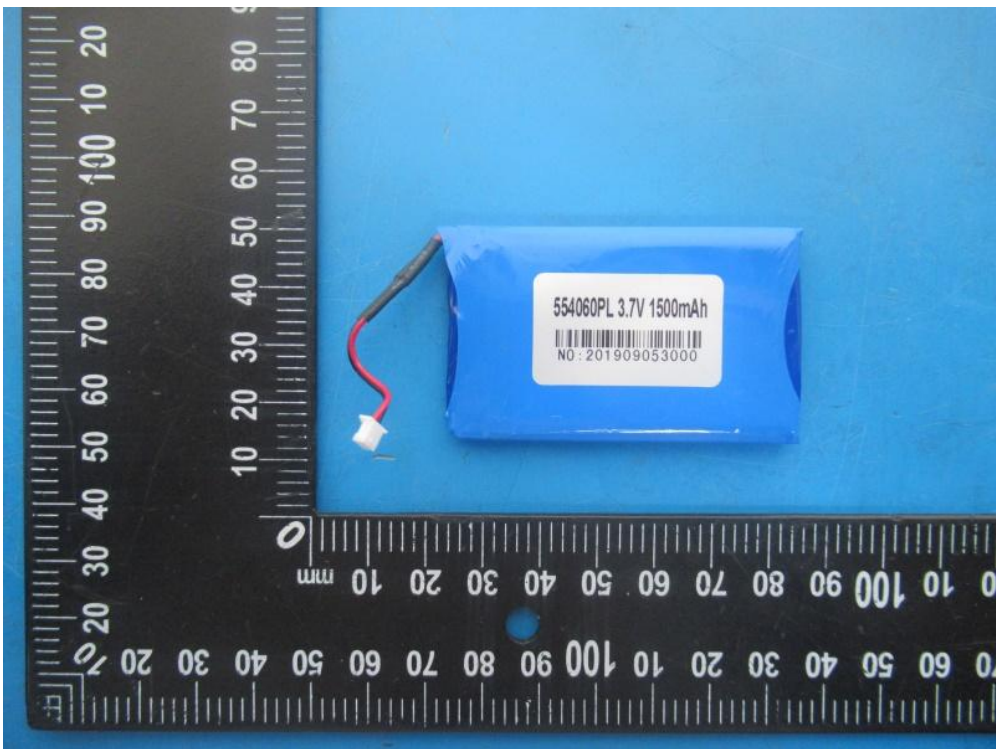
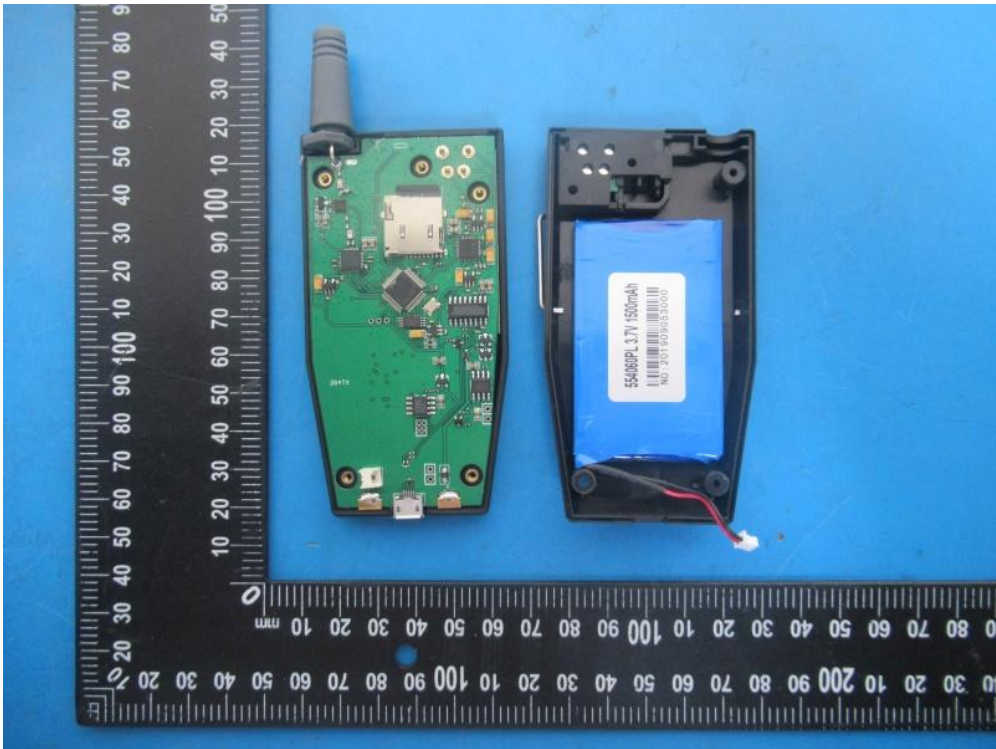


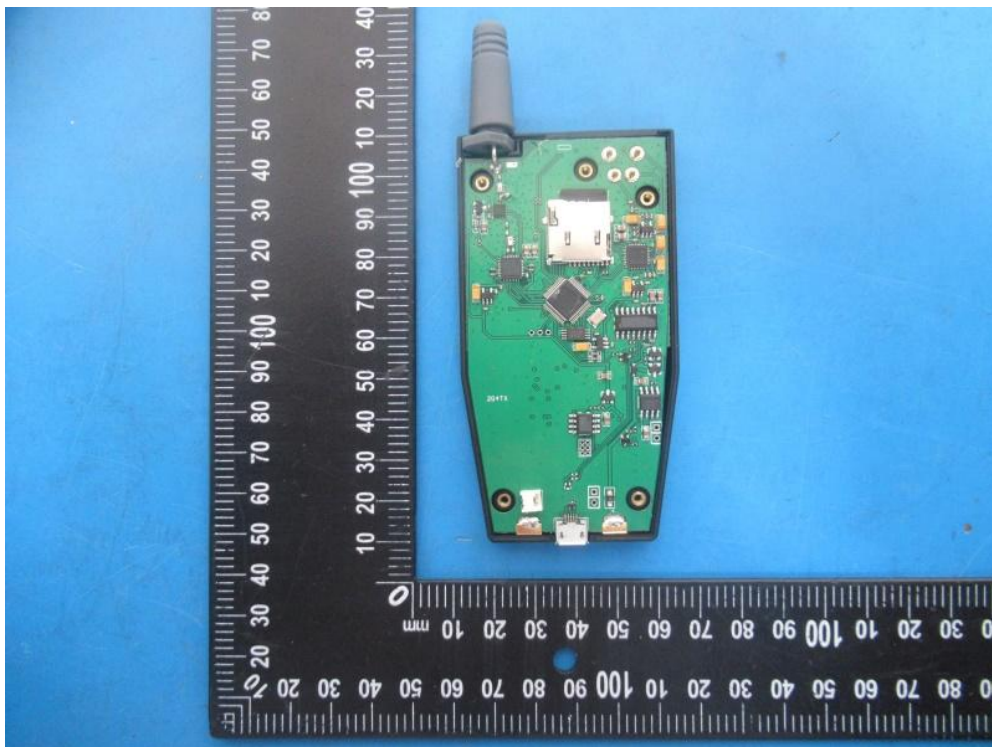
### 9. PHOTOS OF THE EUT

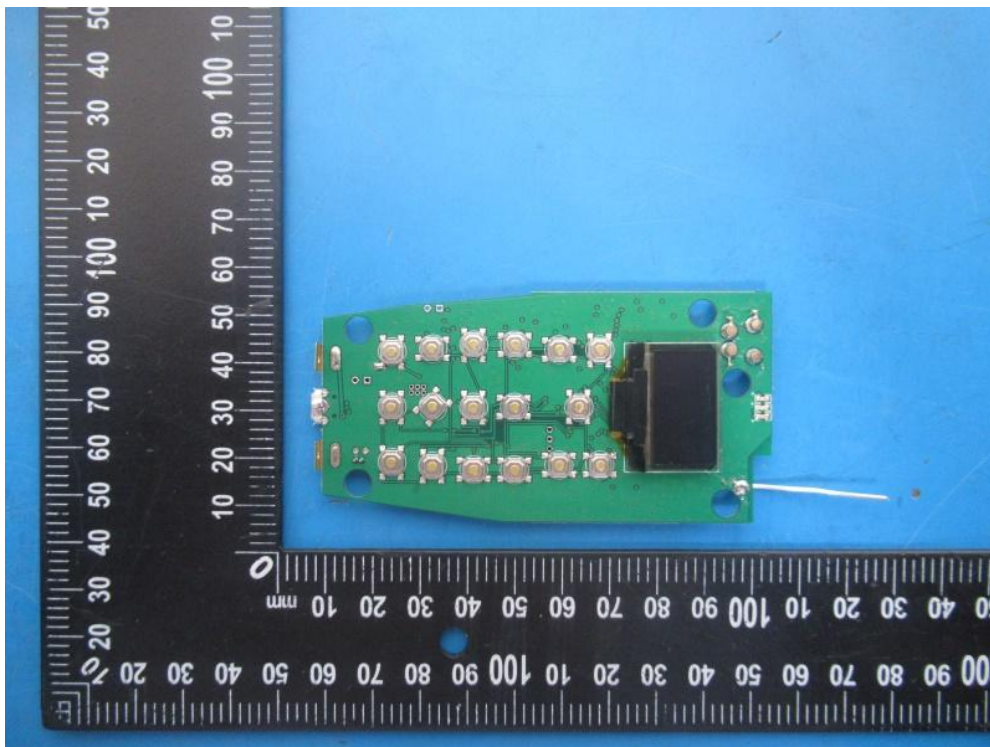
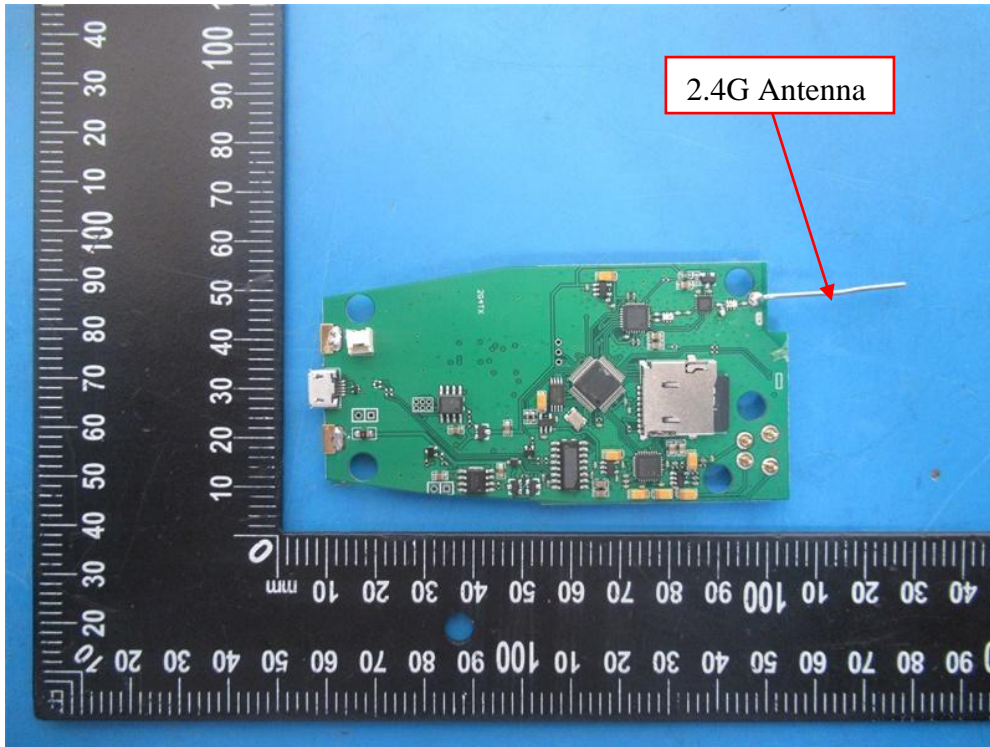












-----THE END OF REPORT-----