

EN IMPORTANT: Keep these instructions. DO NOT DISCARD.

- Caution:
Please read these carefully before using:
- Only adults should install and replace batteries.
 - Rechargeable batteries are only to be charged under adult supervision
 - Rechargeable batteries are to be removed from the toy before being charged.
 - Non-rechargeable batteries are not to be recharged.
 - If the device has not used for a long time, remove the batteries.
 - Do not mix old and new batteries.
 - Do not mix alkaline, standard (carbon zinc) or rechargeable (nickel cadmium) batteries.
 - Exhausted batteries are to be removed from the toy.
 - The supply terminals are not to be short-circuited.
 - Only batteries of the same or equivalent type as recommended are to be used.
 - Batteries are to be inserted with the correct polarity.
 - Do not dispose of batteries in fire, batteries may explode or leak.
 - Batteries may explode or leak if misused.
- Hereby, Kid Galaxy Ltd. declares that this R/C toy is in compliance with the essential requirements and other relevant provisions of Directive 1999/5/EC.

FR Important : Conserver ces instructions. NE PAS LES ELIMINER.

- Attention:
Lisez attentivement cette notice d'utilisation avant utilisation:
- Les piles devraient être remplacées par un adulte exclusivement.
 - Les batteries rechargeables ne doivent être rechargées que par les adultes.
 - Les batteries rechargeables doivent être retirées du jouet avant d'être rechargées.
 - Les Piles Non Rechargeables Ne Peuvent Etre Rechargees.
 - Ou Des Piles Neuves Avec Des Piles Usagees. Retirez Les Piles En Cas De Non-Utilisation Prolongee Du Jouet.
 - Ne pas mélanger piles usagées et piles neuves.
 - Ne pas mélanger piles alcalines, standard (zinc carbone) ou rechargeables (cadmium-nickel).
 - Enlever Les Piles Usees Du Jouet.
 - Ne Pas Court-Circuiter Les Poles De Courant.
 - N'utiliser que des piles du type recommandé ou équivalent. Installer les piles en respectant les polarités.
 - Installer les piles en respectant la polarité comme indiqué.
 - Ne jetez pas les piles au feu car elles peuvent exploser ou fuir.
 - Les piles peuvent exploser ou fuir si elles ne sont pas utilisées correctement.

Par la présente Kid Galaxy Ltd déclare que l'appareil jouet radiocommandé est conforme aux exigences essentielles et aux autres dispositions pertinentes de la directive 1999/5/CE.

IT IMPORTANTE: Conservare queste istruzioni. NON ELIMINARLE.

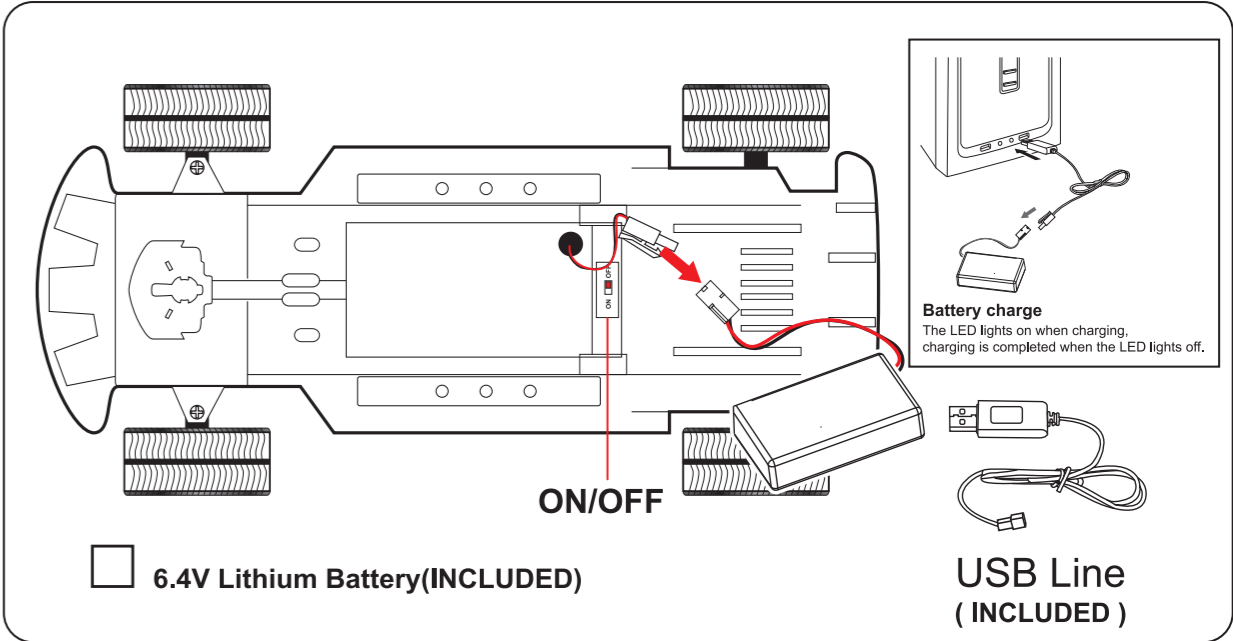
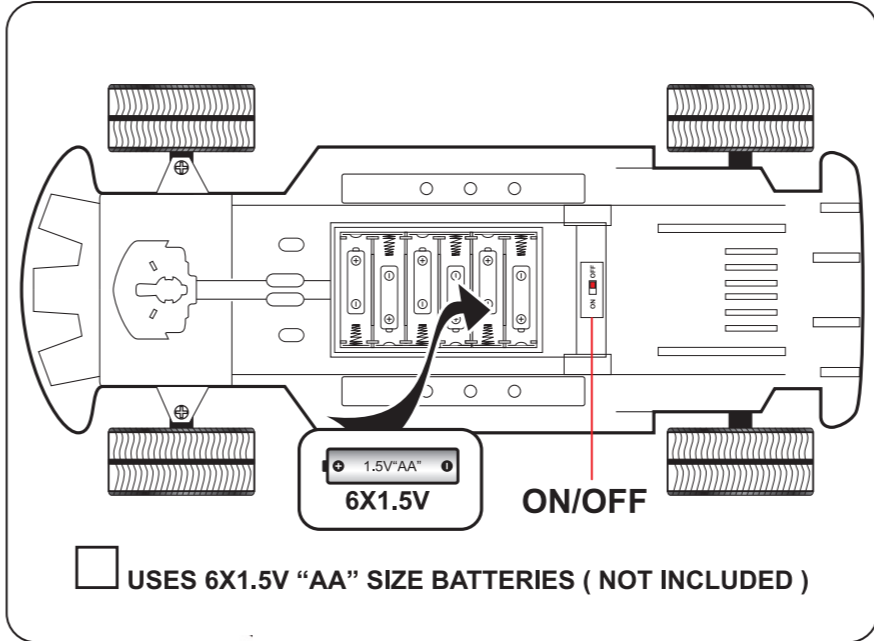
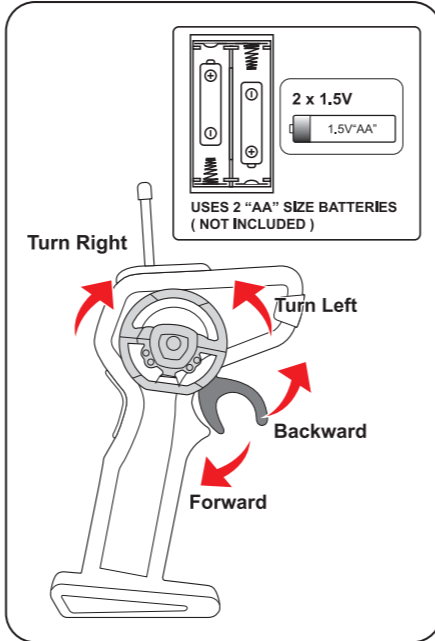
- Attenzione:
1. Affidare la sostituzione di batterie esclusivamente a personale adulto.
- Le batterie ricaricabili devono essere ricaricate esclusivamente sotto la supervisione di un adulto.
 - Rimuovere le batterie dal giocattolo prima del caricamento.
 - Le batterie non ricaricabili non possono essere ricaricate.
 - Se non si usa il dispositivo per diverso tempo, togliere le batterie.
 - Non mischiare batterie vecchie con batterie nuove.
 - Non mischiare batterie alcaline, standard (zinco-carbonio) con batterie ricaricabili (nichel-cadmio).

- Le batterie scariche devono essere tolte dall'unità.
 - Il terminale di alimentazione non deve essere cortocircuitato.
 - Si consiglia l'uso di pile uguali o di tipo equivalente.
 - Le pile vanno inserite osservando la polarità corretta.
 - Non gettare le batterie nel fuoco, poiché possono esplodere o rilasciare sostanze chimiche.
 - Se non sono utilizzate correttamente, le batterie possono esplodere o rilasciare sostanze chimiche.
- Con la presente Kid Galaxy Ltd dichiara che questo giocattolo radiocomandato è conforme ai requisiti essenziali ed alle altre disposizioni pertinenti stabilite dalla direttiva 1999/5/

ES IMPORTANTE: Guardar estas instrucciones. NO TIRAR.

- Precaución:
Por favor, lea estas instrucciones detenidamente antes de usar este producto:
- Las pilas deben ser reemplazadas por adultos solamente.
 - Las pilas recargables solo deben cargarse bajo supervisión adulta.
 - Las pilas recargables deben retirarse del juguete antes de cargarlas.
 - No recargar la s pilas no recargables.
 - Si no se va a utilizar el juguete durante mucho tiempo, sacar las pilas.
 - No mezcle pilas nuevas con viejas.
 - No mezcle pilas alcalinas, estándar (carbon zinc) o recargables (nickel cadmium).
 - Sacar las pilas gastadas del juguete.
 - No circuitar el terminal de alimentación.
 - Usar solo las pilas recomendadas o equivalentes.
 - Las pilas deben insertarse respetando la polaridad correcta.
 - No arrojar las pilas al fuego ya que hay peligro de explosión o de fuga de las pilas.
 - Las pilas pueden estallar o tener fugas si no se usan correctamente.
- Por medio de la presente Kid Galaxy Ltd declara que el juguete radiocomandado cumple con los requisitos esenciales y cualesquiera otras disposiciones aplicables o exigibles de la Directiva 1999/5/CE.

- AR** هيبنت. انه من صلحختت ال. تامي لعتل هذبه ظفحتا: ماه
نم اهيل عح يرضل ا قق فاولا نودب و دح اولا هذه يل عي دعت و ا تاريخي ت ي
هجالا
زاهجلا اذه لي غشيت يف مدخمست مالا قح ءاغلل يل ل يدؤي دق. يري اعيا م ل ل لاثت م الا بي ن عم ل
ن ع ديع ناكه يف ا هب ل ع ل ل ل ل ع ل ل. كيري ظان ك ما م ا م ا ل ع ا ج ا. هذبه ل ع ل ل ا هذبه ل ع ل ل ا دن
تا ناو ي و ل ا و ا ص ا خ ش ا ل ا ع م ا د ط ص ا ه ي ف ث د ح ي د ق ي ت ل ا ي ر خ ا ل ا ق ط ا ن م ل ا و ا ق ر ط ل ل
تا ر ا ي س ل ا و ا ف ي ل ا ل ا.
1. مادختسا ل ل ب ق ل ع ن ع ي ا ن ع ب تامي ل ع ل ل ا هذبه ءا ر ق. ا ج ر ب
2. ن ي غ ل ا ب ل ا ي و س ا ل د ا ب د س ا و ا ي ا ر ط ا ب ل ا ب ي ص ن ت ب م و ق ي ن ا ب ج ي ا ل.
3. ن ي غ ل ا ب ل ا ف ا ر ش ا ت ح ت ال ن ح ش ل ا د ا ع ل ل ل ا ب ا ق ل ا تا ي ر ط ا ب ل ا ن ح ش ب ج ي ا ل.
4. ي ع م ي ف ا د ب ل ا ب ل ب ق ل ع ل ل ل م ن ح ش ل ا د ا ع ل ل ا ل ب ا ق ل ا تا ي ر ط ا ب ل ا ج ا ر خ ل ب ج ي.
5. ن ح ش ل ا د ا ع ل ل ا ل ب ا ق ل ا ر ي غ تا ي ر ط ا ب ل ا ن ح ش ن ك م ي ا ل.
6. تا ي ر ط ا ب ل ا ل ل ا ز ب م ق. ء ل ي و ط ء ر ت ف ل ز ا ه ج ل ا م ا د خ ت س ا م ت ي م ل ا ذ ا.
7. ء د ي د ج ي ر خ ا ع م ء م ي د ق تا ي ر ط ا ب ب ي ك ر ت ب م ق ت ال.
8. (نوب ر ك ل ا و ل ن ز ل ا تا ي ر ا ط ب) ء ي س ا ي ق تا ي ر ا ط ب ع م ء ي و ل ق تا ي ر ا ط ب ب ي ك ر ت ب م ق ت ال.
9. م و ي م د ك ل ك ي ن ل ا تا ي ر ا ط ب (ن ح ش ل ا د ا ع ل ل ا ل ب ا ق ل ا تا ي ر ا ط ا ب و ا
10. ب ع ل ل ل م ن ء ي ع ض ل ا تا ي ر ا ط ا ب ل ا ل ا ز ل ا ل ب ج ت.
11. ل ي ص و ت ل ا ف ا ر ط ا ف ا ر ط ا ر ي ب ر ص ق ء ر ن ا د ل م ع ب ج ي ا ل.
12. ط ق ا ه ب ي ص و م ل ا و ا ن ا ل ا م و. و د ح ا و ع و ن م ي و س تا ي ر ا ط ب م ا د خ ت س ا ب ج ي ا ل.
13. ء ح ي ح ص ل ا ب ا ط ا ل ا ع م تا ي ر ا ط ا ب ل ا ل ي ص و ت ب ج ي.
14. ح ا ش ت ر ا ه ب ث د ح ي ا و ر ج ف ن ت د ق. ر ا ن ا ل ي ف تا ي ر ا ط ا ب ل ا م ن ص ل ح ت ت ال.
15. ا ط ا ل و ح ن ي ل ع ا م ا د خ ت س ا م ت ا ذ ا ح ا ش ت ر ا ه ب ث د ح ي ا و ا تا ي ر ا ط ا ب ل ا ر ج ف ن ت د ق.
16. د ع ب ن ع م ك ح ت ل ا ل ب ع ل ل ن ا. ء و د ح م ل ا ي س ر ك ل ا غ د ي ك ء ر ش ل ن ل ع ت. ء ق ي ت و ل ا هذبه ب ج و م ب
17. 5/1999/EC ه ي ج و ت ل ا ب ل ل و ل ا ت ا ذ ي ر خ ا ل ا م ا ك ج ا ل ا و ا ء ي س ا س ا ل ا ت ا ب ل ط ت م ل ا ع م ء ق ف ا و ت م



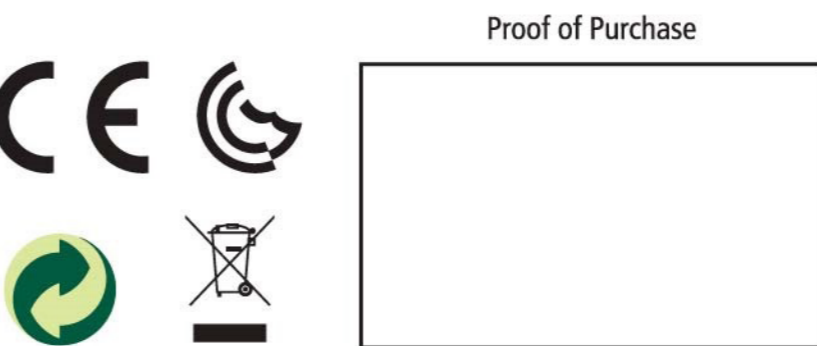
RU ВАЖНО Сохраните данные инструкции. НЕ ВЫБРАСЫВАТЬ. Внимание!

- Перед использованием внимательно прочтите данные инструкции:
1. Установки аккумулятора должна производиться только взрослыми.
2. Аккумуляторные батареи следует заряжать только под присмотром взрослых.
3. Перед зарядкой аккумуляторные батареи необходимо извлечь из игрушки.
4. Неперезаряжайте батареи.
5. Если устройство не используется выключите его немедленно.
6. Не используйте одновременно старые и новые батареи.
7. Не используйте одновременно щелочные, стандартные (углерод-цинковые) или аккумуляторные (никель-кадмиевые) батареи.
8. Разряженные батареи необходимо извлекать из игрушки.
9. Замыкание на короткое замыкание питания недопустимо.
10. Рекомендуется использовать только батареи одного или эквивалентного типа.
11. При установке батареи необходимо соблюдать полярность.
12. Не подвергайте батареи воздействию огня: они могут взорваться или протечь.
13. При неправильном использовании батареи они могут взорваться или протечь.
Настоящим Kid Galaxy Ltd заявляет, что данная радиоуправляемая игрушка соответствует своим требованиям и другим необходимым условиям директивы 1999/5/EC.

FCC
Caution: The user is cautioned that changes or modifications not expressly approved by the party responsible for compliance could void the user's authority to operate the equipment.

NOTE: This equipment has been tested and found to comply with the limits for a Class B digital device, pursuant to Part 15 of the FCC Rules. These limits are designed to provide reasonable protection against harmful interference in a residential installation. This equipment generates, uses and can radiate radio frequency energy and, if not installed and used in accordance with the instructions, may cause harmful interference to radio communications. However, there is no guarantee that interference will not occur in a particular installation.
If this equipment does cause harmful interference to radio or television reception, which can be determined by turning the equipment off and on, the user is encouraged to try to correct the interference by one or more of the following measures:
-- Reorient or relocate the receiving antenna.
-- Increase the separation between the equipment and receiver.
-- Connect the equipment into an outlet on a circuit different from that to which the receiver is connected.
-- Consult the dealer or an experienced radio/TV technician for help.
FCC Radiation Exposure Statement:
This equipment complies with FCC radiation exposure limits set forth for an uncontrolled environment. This transmitter must not be co-located or operating in conjunction with any other antenna or transmitter.
This device complies with Part 15 of the FCC Rules. Operation is subject to the following two conditions: (1) this device may not cause harmful interference, and (2) this device must accept any interference received, including interference that may cause undesired operation.

1-800-816-1135
Visit our website! www.kidgalaxy.com
Conforms to the safety requirements of ASTM F963 and FCC regulations.
Conforms to the safety requirements of EN71.



changes or modifications not expressly approved by the party responsible for compliance could void the user's authority to operate the equipment.

This equipment has been tested and found to comply with the limits for a Class B digital device, pursuant to Part 15 of the FCC Rules. These limits are designed to provide reasonable protection against harmful interference in a residential installation. This equipment generates, uses and can radiate radio frequency energy and, if not installed and used in accordance with the instructions, may cause harmful interference to radio communications. However, there is no guarantee that interference will not occur in a particular installation.

If this equipment does cause harmful interference to radio or television reception, which can be determined by turning the equipment off and on, the user is encouraged to try to correct the interference by one or more of the following measures:
-- Reorient or relocate the receiving antenna.
-- Increase the separation between the equipment and receiver.
-- Connect the equipment into an outlet on a circuit different from that to which the receiver is connected.
-- Consult the dealer or an experienced radio/TV technician for help.

This equipment complies with FCC radiation exposure limits set forth for an uncontrolled environment. This equipment should be installed and operated with minimum distance