

Siren + Keypad Manual

FCC ID:2APSE-SIREN

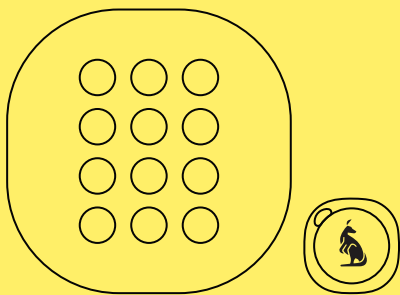
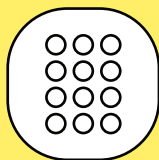


Table of Contents

3	Intro
4	Get to know your Siren + Keypad
5	Creating your PIN code
6	Security Modes
7	Arming
8	Disarming
9	Roo Tags
10	Panic Button
11	Reset your Siren + Keypad Multi-Siren + Keypad Home Bypassing
12	Triggers and Reactions
13	Security Plans
14	Specifications

SIREN + KEYPAD




The Kangaroo Siren + Keypad is the base station for your security system. With it, you can manually arm and disarm your Kangaroo security system. If one of your Kangaroo sensors is triggered, the siren will sound, scaring off intruders and alerting neighbors. The Siren + Keypad is designed to work in conjunction with a Kangaroo sensor.

GET STARTED

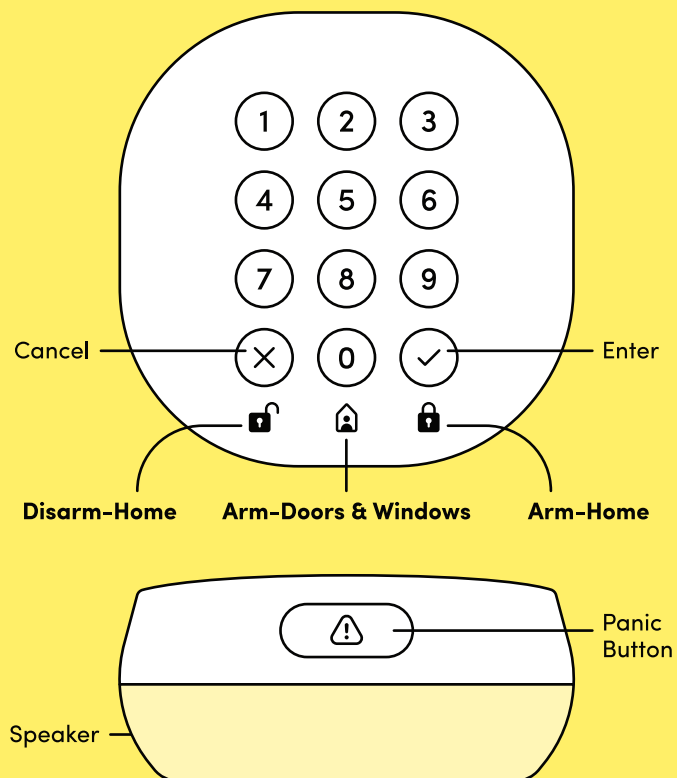


Download the iOS or Android “Kangaroo Security” app, and have your WiFi password handy. The Kangaroo app will walk you through the setup process, step by step.

During the setup process you will need to turn bluetooth ON. To do so, go to Settings on your phone, select  and turn it on.

Now go ahead and plug it in. Place it by your most frequently used entrance/exit. Inside use only!

GET TO KNOW YOUR SIREN + KEYPAD



Roo Tag

CREATING YOUR PIN CODE



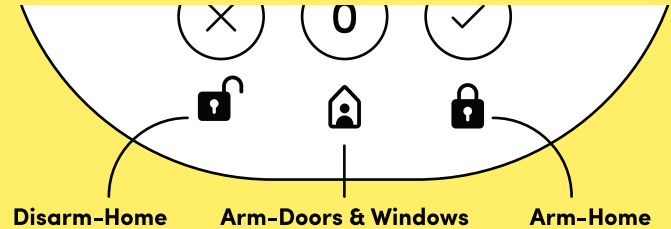
Your PIN can be used to arm and disarm your system and to access sensitive information in the app.

Each person in the home has their own PIN code. This lets you know who has armed or disarmed the system.

Follow the instructions in the app to create your PIN code. Make sure you remember yours! It's a good idea to write it down somewhere safe.

No one will ever ask for your PIN code over the phone. If you are asked do not share this information. Giving out your PIN puts your home at risk.

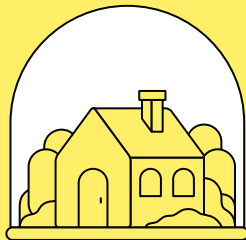
SECURITY MODES



There are three security modes to choose from:

-  **Disarm-Home**
Your sensors are off and not monitoring any activity. Disarm when you're expecting guests or any time you can keep an eye on your home and don't want to keep arming and disarming your sensors.
-  **Arm-Doors & Windows**
Your sensors are monitoring only your doors and windows. You can move around freely when you're hanging out in the house and go to bed protected.
-  **Arm-Home**
Your sensors are on and monitoring all activity. Arm is perfect when no one is home.

ARMING



You don't need to enter a PIN code to arm your system (unless you choose to turn off PIN-less Arming in the app settings.)

To Arm with PIN-less Arming

1. Select Arm-Home (🔒) or Arm-Doors & Windows (🔒)
2. Press Enter (✓)

To Arm without PIN-less Arming

1. Select Arm-Home (🔒) or Arm-Doors & Windows (🔒)
2. Enter your PIN code
3. Press Enter (✓)

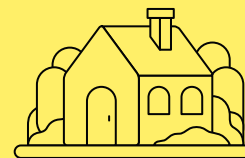
Exit Delay

While the system is arming you'll see a flashing red light and hear the countdown sound from the siren.

Timing is customizable, but by default you have 5 minutes to leave without setting off the alarm. Your app and siren will make sure you know how much time you have to leave.

Once your home is officially armed, the light will stop blinking and the countdown sound will silence.

DISARMING



To Disarm the system or move from Arm-Home to Arm-Doors & Windows

1. Select Disarm (🔓) or Arm-Doors & Windows (🔒)
2. Enter your PIN code
3. Press Enter (✓)

Entrance Delay

When you enter your home, you will hear an entry sound as a reminder to disarm your system. You have 60 seconds, or 5 attempts, to disarm your system before the alert siren goes off.

ROO TAGS



Tags allow you to move between Arm and Disarm with one touch. Just tap the tag to the siren and your system will move between Disarm and Arm mode.

You can set up as many tags as you would like and add more at anytime.

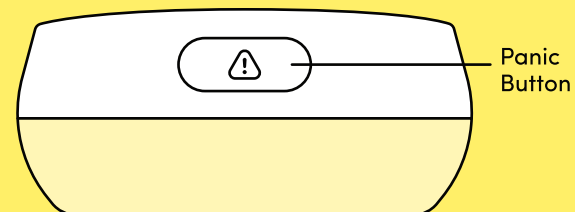
The owner of the tag does not need to have the Kangaroo app. This makes it a great option for providing limited access to kids, houseguests, nannies, etc.

The app will walk you through setup.

Reassigning Tags

You can reassign tags in the Kangaroo Security app through Device Management in Settings.

PANIC BUTTON



The Panic Button is located on the back of your Siren + Keypad

If you press the Panic Button:

- The alarm will immediately sound
- The app will immediately notify everyone in your home
- And monitoring agents will request dispatch immediately **(If Pro-Monitoring is enabled)**

THINGS TO KNOW

Reset Your Siren + Keypad

To reset your siren, hold down **Cancel** (X) and **Enter** (✓) at the same time for 10 seconds. The siren will then prompt you to input your PIN code and hit **Enter** (✓).

Multi-Siren + Keypad Home

If you regularly use more than one entry to your home, you may want a Siren + Keypad by each door. When another one is added to the system, it will automatically take on the PIN codes and tags of your existing siren. The speakers will both react and sound in unison.

Bypassing

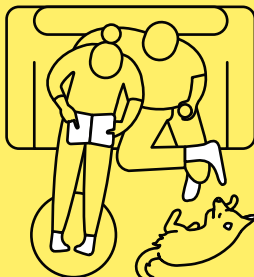
If you try to arm your security system while one of your sensors is tripped, your system won't arm. You must either correct the problem or bypass the tripped sensor by pressing **Enter** (✓) or Bypass in your app.

Your siren and your app will both identify which sensor has been tripped.

TRIGGERS AND REACTIONS

Action	Time Lapse	Basic User	Complete User
Motion detected (Arm-Home mode only) / Entry detected	Immediately	App notification sent. Siren sounds entry sound.	App notification sent. Siren sounds entry sound.
	30s	App notification sent. Siren sounds warning sound.	User receives a text or phone call (choose in app.) Siren sounds warning sound.
	60s	App notification sent. Siren sounds alarm sound.	App notification sent. Siren sounds alarm sound. Cops dispatched.
Siren is unplugged	Immediately	App notification sent.	App notification sent.
Panic Button pressed / Kangaroo Button pressed (Arm-Home mode only) / Incorrect Password 5x	Immediately	App notification sent. Siren sounds alarm sound.	App notification sent. Siren sounds alarm sound. Cops dispatched.

THE PLANS



Kangaroo Basic

A great option for simple, straight-forward peace of mind. Receive notifications when sensors are triggered, invite as many users as you'd like and monitor multiple homes.

Kangaroo Complete

A comprehensive security plan with all the Basic features, plus the support of a professional monitoring agency, SMS messages and voice notifications, and Alexa and Google Home integration.

SPECIFICATIONS

Specs

Size: 100mm x 129mm x 177mm

Weight without adapter: 185.5g

Adapter weight: 54.5g

Key fob weight with the loop: 3.5g

Metal key ring weight: 0.6g

Key Fobs: 2 pcs

Power Supply: 5VDC 2.4A

Power Cord: 2m

Requires an indoor outlet

Operating temperature: 0°C to 40°C

System Requirements

WiFi 802.11 b/g/n, 2.4GHz (WEP, WPA, or WPA2 encryption) compatible router.
Mobile device with iOS 10.0 and above | Android 5.0 and above. Active internet and cellular connections are required. Alarm monitoring service requires a Kangaroo Security subscription. For indoor use only.

1-year worry-free warranty

heykangaroo.com/warranty

FCC Statement:

This device complies with Part 15 of the FCC Rules. Operation is subject to the following two conditions:

- (1) This device may not cause harmful interference, and
- (2) This device must accept any interference received, including interference that may cause undesired operation.

Warning: Changes or modifications not expressly approved by the party responsible for compliance could void the user's authority to operate the equipment.

NOTE: This equipment has been tested and found to comply with the limits for a Class B digital device, pursuant to Part 15 of the FCC Rules. These limits are designed to provide reasonable protection against harmful interference in a residential installation.

This equipment generates uses and can radiate radio frequency energy and, if not installed and used in accordance with the instructions, may cause harmful interference to radio communications. However, there is no guarantee that interference will not occur in a particular installation. If this equipment does cause harmful interference to radio or television reception, which can be determined by turning the equipment off and on, the user is encouraged to try to correct the interference by one or more of the following measures:

- Reorient or relocate the receiving antenna.
- Increase the separation between the equipment and receiver.
- Connect the equipment into an outlet on a circuit different from that to which the receiver is connected.
- Consult the dealer or an experienced radio/TV technician for help.

FCC Radiation Exposure Statement:

This equipment complies with FCC radiation exposure limits set forth for an uncontrolled environment. This equipment should be installed and operated with minimum distance 20cm between the radiator & your body



Call

800-371-0097



Chat

heykangaroo.com/support



Email

support@heykangaroo.com



FAQ

heykangaroo.com/support