

HOW THIS WORKS

This is the Kangaroo Home Climate Sensor. It checks your space for water leaks and extreme changes in temperature and humidity, then alerts you immediately.

Just connect it to your WiFi, and relish the peace of mind.

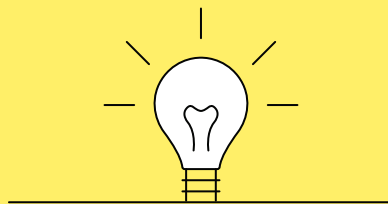


GET STARTED

Download the iOS or Android "Kangaroo Security" app, and have your WiFi password handy.


...that's it.

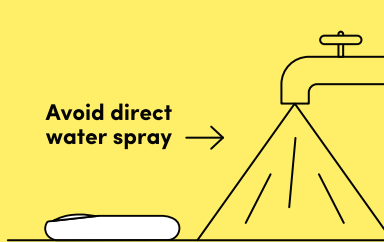
Once you've got the app, you'll be welcomed with a short setup walkthrough.



HELPFUL HINTS

First you will make your account. Then you will set up your sensors. If you need help at any time, please contact customer service.

- During the setup process you will need to turn bluetooth ON. To do so, go to Settings on your phone, select  and turn it on.
- Once all of your devices are paired you may shut your bluetooth off.

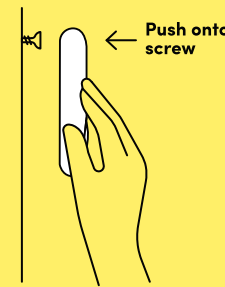


FLAT SURFACE

Best for water leak, temperature, and humidity detection.

Place the sensor on the ground directly beside the area at risk for leaks. Make sure the sensor has solid ground contact.

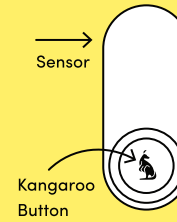
To avoid water damage, do not submerge the sensor in water.



WALL MOUNT

If a flat surface is not available, you can mount it on a wall as an alternative.

Place the screw (included) on the wall at your preferred height, then push the sensor onto the screw.

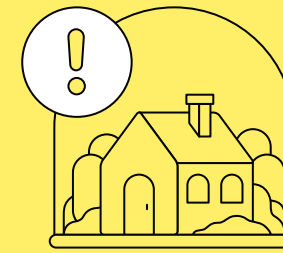


CUSTOMIZE YOUR SETTINGS

You are welcome to keep the default settings, or create your own!

You can select your preferred temperature unit (°C/°F) and set your high and low temperature and humidity alerts.

To prevent emergency situations, we suggest choosing settings that are slightly below and slightly above your danger zones.



CLIMATE ALERTS: WHAT TO KNOW

You will receive a notification if your sensor detects any of the following:

- As little as 1mm of water
- Temperature or humidity that is above or below your alert settings
- Temperature or humidity that is rapidly rising or falling



Call

800-371-0097



Chat

heykangaroo.com/support



Email

support@heykangaroo.com



FAQ

heykangaroo.com/support

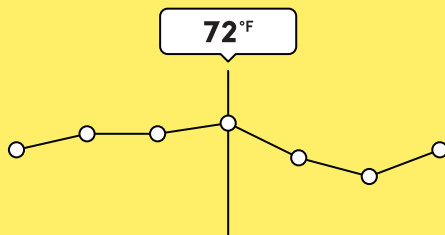


HOW TO USE YOUR SENSOR

By default, your Home Climate Sensor will always be armed and ready to go.

If everything is normal, your app will update your home's temperature and humidity readings hourly. All readings will be stored in your home climate history.

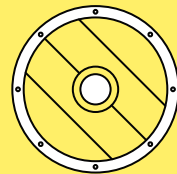
You will be notified immediately if there is any detection.



HOME CLIMATE HISTORY

With **Kangaroo Basic**, your home climate history is available for 24 hours.

To access the full home climate history, subscribe to **Kangaroo Complete**.



KANGAROO BASIC

A great option for simple, straight-forward peace of mind. Receive notifications when sensors are triggered, invite as many users as you'd like and monitor multiple homes.

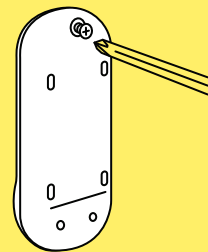


KANGAROO COMPLETE

A comprehensive security plan with all the Basic features, plus SMS messages and voice notifications, access to the full home climate history, Alexa and Google Home integrations, homeowners insurance discount, access to a professional monitoring agency, and more.

Visit heykangaroo.com/pricing for the most updated list of features.

Activate your kangaroo security plan by going to heykangaroo.com/activate.



CHANGING BATTERIES

You need to be able to access the screw on the back of the sensor to change batteries.

You can change the batteries by unscrewing the screw in the back and removing the front cover of the sensor.

Your sensor runs on 2 AA batteries. You'll receive an alert when batteries are running low. Don't wait for them to run out!

Reset

Hold down the Kangaroo Button for 15s.

Troubleshooting: connectivity, pairing and power

- Ensure the device's batteries are working.
- Make sure the yellow battery tab is removed and the batteries are aligned correctly.
- If you're having trouble pairing, try resetting the device by holding down the Kangaroo Button for 15s.

Troubleshooting: overexposed to below 14°F (-10°C)

Wipe leads with a towel soaked in warm water. Then wipe with a dry towel.

Exposure to below 32°F will reduce battery lifespan.

Specs

Size: 100mm x 42mm x 18mm
Weight: 73.4g (Alkaline battery), 57.1g (Lithium battery)
Battery: 2 x AA included
Operating temperature: 14°F (-10°C) to 140°F (60°C)

System Requirements

WiFi 802.11 b/g/n, 2.4GHz (WEP, WPA, or WPA2 encryption) compatible router. Mobile device with iOS 10.0 and above | Android 5.0 and above. Active internet and cellular connections are required. Alarm monitoring service requires a Kangaroo Security subscription. For indoor use only.

1-year worry-free warranty
heykangaroo.com/warranty

FCC Statement:

This device complies with Part 15 of the FCC Rules. Operation is subject to the following two conditions:

- (1) This device may not cause harmful interference, and
- (2) This device must accept any interference received, including interference that may cause undesired operation.

Warning: Changes or modifications not expressly approved by the party responsible for compliance could void the user's authority to operate the equipment.

NOTE: This equipment has been tested and found to comply with the limits for a Class B digital device, pursuant to Part 15 of the FCC Rules. These limits are designed to provide reasonable protection against harmful interference in a residential installation.

This equipment generates uses and can radiate radio frequency energy and, if not installed and used in accordance with the instructions, may cause harmful interference to radio communications. However, there is no guarantee that interference will not occur in a particular installation. If this equipment does cause harmful interference to radio or television reception, which can be determined by turning the equipment off and on, the user is encouraged to try to correct the interference by one or more of the following measures:

- Reorient or relocate the receiving antenna.
- Increase the separation between the equipment and receiver.
- Connect the equipment into an outlet on a circuit different from that to which the receiver is connected.
- Consult the dealer or an experienced radio/TV technician for help.

FCC Radiation Exposure Statement:

This equipment complies with FCC radiation exposure limits set forth for an uncontrolled environment. This equipment should be installed and operated with minimum distance 20cm between the radiator & your body

Home Climate Sensor Manual

