



PRIVACY CAMERA

Secure your home and your privacy. Our Privacy Camera features a patented shield to block the lens when it's off, as well as a live video feed, motion-triggered videos and optional two-way audio.



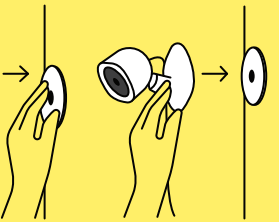
GET STARTED

1. Download the iOS or Android "Kangaroo Security" app and have your WiFi password handy.
2. Turn on your phone's bluetooth, you can turn it off after setup. (To turn it on, go to Settings on your phone, select  and turn it on.)
3. Follow the step-by-step instructions in the app.



CAMERA PLACEMENT TIPS

- Stand your camera on any flat surface or mount it to a wall. When finding a spot for the camera keep in mind:
1. You want to choose a spot with a strong WiFi connection.
 2. Your camera's viewing angle is 105°.
 3. To receive alerts if your home's smoke/co alarm sounds, place the camera within 15ft of your smoke/co detector.



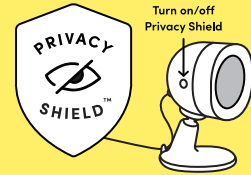
MOUNTING YOUR CAMERA

Wall Mounting (Peel and stick)

- Peel the sticker from the mounting plate.
- Press and hold for 30s to secure it on the wall.
- Place the camera on the mounting plate.

Screw-mount

- Take one of the screws included with your camera.
- Screw the mounting plate to the wall.
- Place the camera on the mounting plate.

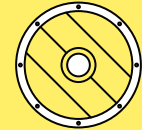


PRIVACY SHIELD

The Privacy Shield is an unhackable layer of personal security. When the patented glass turns gray, all camera functions turn off, guaranteeing your privacy.

Turn the Privacy Shield on and off by pressing the button on your camera.

Learn about more ways you can control the Privacy Shield by following the setup process in the app!



KANGAROO BASIC PLAN

A great option for simple, straight-forward peace of mind. Receive notifications when the camera is triggered, add unlimited number of devices and invite as many users to help monitor your home as you would like.




KANGAROO COMPLETE PLAN

A comprehensive security plan with all the Basic features, plus SMS messages and voice notifications, homeowners insurance discount, access to a professional monitoring agency, extra cloud storage and more.

Visit heykangaroo.com/pricing for the most updated list of features.

Activate your kangaroo security plan by going to heykangaroo.com/activate.

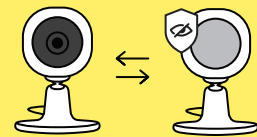


 **Call**
800-371-0097

 **Chat**
heykangaroo.com/support

 **Email**
support@heykangaroo.com

 **FAQ**
heykangaroo.com/support



CAMERA MODES

The Privacy Shield can be on or off. When it is off, you can control each feature individually.

Privacy Shield Off features:

- Livestream
- Motion detection
- Sound detection

Privacy Shield On features:

All features and functions are off.



LINK TO HOME ARMING MODES

Link to home arming modes: In your camera's settings you can customize if and how your camera's state should change when your home is armed or disarmed. This is also a great way to control many cameras at once.



LIVESTREAMING FEATURES

You can livestream in 1080p HD or reduce the quality to 360p if your phone is running on data or poor wifi.

- **Recording:** Record directly from the livestream.
- **Screenshot:** Snap a photo of what's happening in the livestream.
- **Two-way Audio:** You have the option to use your phone to directly communicate to a person or pet in the livestream view.
- **Digital Zoom:** Zoom at 10x.
- **Night Vision:** Illuminates up to 26.2ft (8m)



MOTION AND SOUND EVENTS

If motion or specific sounds are detected (ex. a smoke/CO alarm) you will get an instant alert with a link to a video.

From there, call for help, open the livestream view or dismiss the alert.

The camera cannot detect human voices. Detectable sounds will be shown in the app and can be enabled/disabled on each camera.

We take privacy seriously. You should too. Visit heykangaroo.com/privacy for more details.



CLOUD STORAGE

All cameras come with a basic level of cloud storage. This is what allows you to view the event videos.

To access and store event videos for longer you can increase your amount of cloud storage by signing up for the Kangaroo Complete Plan.

The Kangaroo Complete Plan also comes with tons of other premium features. Check them out at heykangaroo.com/pricing.

1-year worry-free warranty
heykangaroo.com/warranty

Specs

Size: 4.33" x 3.35" x 3.35" (110mm x 85mm x 85mm)

Weight: 4.16oz (118g)

Power Cable Length: 4.92ft (1.5m)

Mounting Method: Magnetic

Ports: 1 micro USB

Power Adapter Input: 100-240VAC 50-60Hz

Power Adapter Output: 5V/2000mA

Requires an indoor outlet

Operating temperature: 32°F to 104°F (0°C to 40°C)

Operating humidity: <90% at 104°F (40°C)

Microphone: 16.4ft (5m) detection range

Night Vision: 4 infrared LEDs (850nm) with IR cut filter, illuminates up to 26.2ft (8m)

Video: 1920 x 1080 (1080p), H.265 encoding, 25fps

Field of View: 105° lens

System Requirements

WiFi 802.11 b/g/n, 2.4GHz (WEP, WPA, or WPA2 encryption)

compatible router. Mobile device with iOS 10.0 and above | Android

5.0 and above. Active internet and cellular connections are required.

Alarm monitoring service requires a Kangaroo Security subscription.

For indoor use only.

Troubleshooting

Reset: Press and hold the Privacy Shield button for 15s

In the Box:

Privacy Camera, User Manual, USB cable, power adapter, wall mounting plate, mounting screw, window sticker.

FCC Statement:

This device complies with Part 15 of the FCC Rules. Operation is subject to the following two conditions:

- (1) This device may not cause harmful interference, and
- (2) This device must accept any interference received, including interference that may cause undesired operation.

Warning: Changes or modifications not expressly approved by the party responsible for compliance could void the user's authority to operate the equipment.

NOTE: This equipment has been tested and found to comply with the limits for a Class B digital device, pursuant to Part 15 of the FCC Rules. These limits are designed to provide reasonable protection against harmful interference in a residential installation.

This equipment generates uses and can radiate radio frequency energy and, if not installed and used in accordance with the instructions, may cause harmful interference to radio communications. However, there is no guarantee that interference will not occur in a particular installation. If this equipment does cause harmful interference to radio or television reception, which can be determined by turning the equipment off and on, the user is encouraged to try to correct the interference by one or more of the following measures:

- Reorient or relocate the receiving antenna.
- Increase the separation between the equipment and receiver.
- Connect the equipment into an outlet on a circuit different from that to which the receiver is connected.
- Consult the dealer or an experienced radio/TV technician for help.

FCC Radiation Exposure Statement:

This equipment complies with FCC radiation exposure limits set forth for an uncontrolled environment. This equipment should be installed and operated with minimum distance 20cm between the radiator and your body.

Privacy Camera Manual

Model: CAMERA

