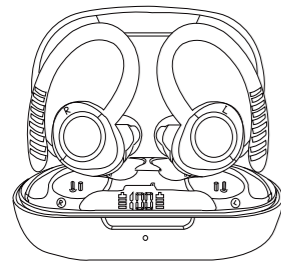


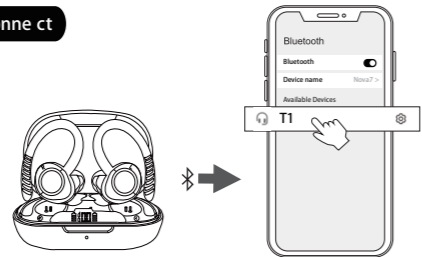
Instruction Manual



Please read the instructions before use

English

Connect



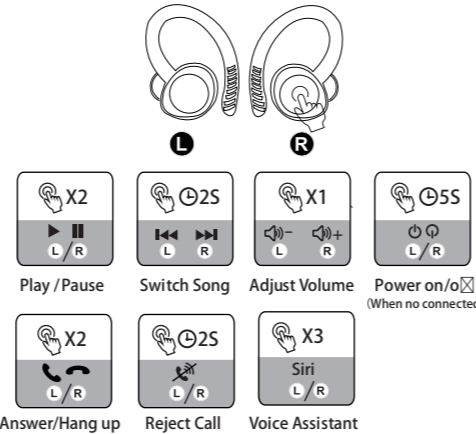
1. Take out the earbuds (Earbuds auto power on)
2. After open the phone Bluetooth, Click the <T1> to Pairing

Reset

If earbuds has any connection or function problems, please reset the earbuds

1. Delete the BT pairing information on the phone.
2. Put the earbuds into the charging case to charge.
3. Take out the earbuds and wait for 20 seconds. (If the above operation does not work, please try again)

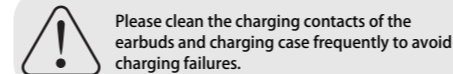
Operation



- X1: Click Once 2S: Press and hold for 2 seconds
- X2: Click 2 times

- ① Can be connected but there is no sound:
Click the right earbuds to increase the volume.
- ② One of earbuds cannot be charge:
Clean the charging contact of the earbuds and the charging case.
- ③ One of the earbuds cannot be connected:
Reset the earbuds.

If the earbuds cannot be charged, please activate the warranty and contact us to send a new product.



Please clean the charging contacts of the earbuds and charging case frequently to avoid charging failures.

Safety Instructions

1. environments, it will damage the battery and circuit.
2. Avoid liquid immersion into the product.
3. Do not disassemble the product.
4. Do not use concentrated chemical products or detergents to clean the product.
5. Use only 5V/1A power supply. Connecting the power supply voltage too high may cause serious damage.
6. Do not randomly discard or place the product near fire or high temperature to avoid the danger of explosion.

EC REP

eVatmaster Consulting GmbH
Bettinastr. 30, 60325 Frankfurt am
Main, Germany
Contact@evatmaster.com

UK REP

EVATOST CONSULTING LTD
Suite 11, First Floor, Moy Road, Business Centre,
Taffs Well, Cardiff, Wales, CF15 7QR
Contact@evatmaster.com

Made in China



This device complies with part 15 of the FCC Rules. Operation is subject to the following two conditions: (1) this device may not cause harmful interference, and (2) this device must accept any interference received, including interference that may cause undesired operation. Any changes or modifications not expressly approved by the party responsible for compliance could void the user's authority to operate the equipment. NOTE: This equipment has been tested and found to comply with the limits for a Class B digital device, pursuant to Part 15 of the FCC Rules. These limits are designed to provide reasonable protection against harmful interference in a residential installation. This equipment generates, uses and can radiate radio frequency energy and, if not installed and used in accordance with the instructions, may cause harmful interference to radio communications. However, there is no guarantee that interference will not occur in a particular installation. If this equipment does cause harmful interference to radio or television reception, which can be determined by turning the equipment off and on, the user is encouraged to try to correct the interference by one or more of the following measures:
-- Reorient or relocate the receiving antenna.
-- Increase the separation between the equipment and receiver.
-- Connect the equipment into an outlet on a circuit different from that to which the receiver is connected.
-- Consult the dealer or an experienced radio/TV technician for help. The device has been evaluated to meet general RF exposure requirement. The device can be used in portable exposure condition without restriction.

IC Caution:

-English:

This device complies with Industry Canada licence-exempt RSS standard(s). Operation is subject to the following two conditions: (1) This device may not cause interference, and (2) This device must accept any interference, including interference that may cause undesired operation of the device.

-French:

Le présent appareil est conforme aux CNR d'Industrie Canada applicables aux appareils radio exempts de licence. L'exploitation est autorisée aux deux conditions suivantes: (1) l'appareil ne doit pas produire de brouillage, et (2) l'utilisateur de l'appareil doit accepter tout brouillage radioélectrique subi, même si le brouillage est susceptible d' compromettre le fonctionnement.