

# USER GUIDE

English

Please activate 2-year warranty  
within 14 days

## Active 2-Year Warranty



Scan the code to enter our website ([xtikland.com](http://xtikland.com)) to activate the warranty within 14 days after receiving the product.

Support free replacement of damaged products.  
(No need to return damaged products)

**Email:** [katong96120@gmail.com](mailto:katong96120@gmail.com)

**WhatsApp:** +86 13242960237

**Facebook:** [facebook.com/Tiklands](https://www.facebook.com/Tiklands)

### key functions

**Power on/off:** Click the “” button

**Play/Pause:** Click “” button

**Adjust Volume:** Click the “+”/“-” button

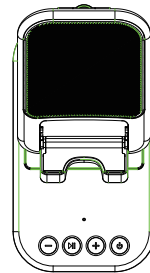
**Switch Song:** Press and hold the “+”/“-” button 2S

**Answer/Hang up:** Click “” button/Press and hold “” 1S

**Reject Call:** Click “” button

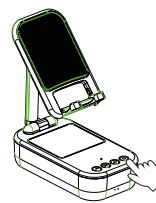
**Reset:** Press and hold “” button 3S

**Reboot:** Press and hold “” button 8S

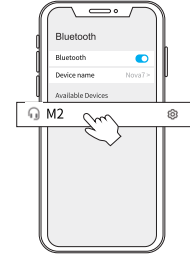


### Connect

ON



1. Turn on the speaker, you will hear the boot



2. After open the phone Bluetooth, Click the <M2> to Pairing

#### Notes:

- If it is not paired for 15 minutes after booting, it will shut down. When low battery, the red light flashes.
- If Apple users feel that the volume is low, you can turn off this setting on the phone (Settings-Sounds & Haptics-Headphone Safety-Reduce Loud Sounds)

### Safety Instructions

- Keep the product away from extremely hot and cold environments, it will damage the battery and circuit.
- Avoid liquid immersion into the product.
- Do not disassemble the product.
- Do not use concentrated chemical products or detergents to clean the product.
- Use only 5V/1A power supply. Connecting the power supply voltage too high may cause serious damage.
- Do not randomly discard or place the product near fire or high temperature to avoid the danger of explosion.



eVatmaster Consulting GmbH  
Bettinastr. 30, 60325 Frankfurt am  
Main, Germany  
Contact@evatmaster.com



EVATOST CONSULTING LTD  
Suite 11, First Floor, Moy Road, Business Centre,  
Taffs Well, Cardiff, Wales, CF15 7QR  
Contact@evatmaster.com

Made in China



This device complies with part 15 of the FCC Rules. Operation is subject to the following two conditions: (1) this device may not cause harmful interference, and (2) this device must accept any interference received, including interference that may cause undesired operation.

Any changes or modifications not expressly approved by the party responsible for compliance could void the user's authority to operate the equipment.

NOTE: This equipment has been tested and found to comply with the limits for a Class B digital device, pursuant to Part 15 of the FCC Rules. These limits are designed to provide reasonable protection against harmful interference in a residential installation. This equipment generates, uses and can radiate radio frequency energy and, if not installed and used in accordance with the instructions, may cause harmful interference to radio communications. However, there is no guarantee that interference will not occur in a particular installation. If this equipment does cause harmful interference to radio or television reception, which can be determined by turning the equipment off and on, the user is encouraged to try to correct the interference by one or more of the following measures:

- Reorient or relocate the receiving antenna.
- Increase the separation between the equipment and receiver.
- Connect the equipment into an outlet on a circuit different from that to which the receiver is connected.
- Consult the dealer or an experienced radio/TV technician for help.

The device has been evaluated to meet general RF exposure requirement. The device can be used in portable exposure condition without restriction.