

NEUROGIXS

NRT-A1

User's Manual



※NEUROGIXS NRT-A1 is a healthcare product and its effects may differ.
※Make sure to charge the NRT-A1 body and the TWS earphones.



Introduction

Thank you for choosing NEUROGIXS NRT-A1.

NEUROGIXS NRT-A1 is not a medical device, but a healthcare device which promotes better sleep through brainwave equalization with our patented RBS technology. NEUROGIXS RBS technology has been tested through a clinical research done by the director of the neuro-health department at Bundang Seoul National University Hospital. There were positive results on shortening the time it takes to fall asleep and maintaining one's sleep. It is recommended to use daily for at least 10 to 14 days in order to feel the difference.

Quick Guide

1. Download "Neurogixs Connect" application from your smartphone.
2. Bluetooth connect NRT-A1 to your smartphone.
3. Use "Neurogixs Connect" to connect NRT-A1 and the TWS earphones.
4. Press the RBS button to activate RBS mode.
5. Listen to RBS while lying in bed comfortably.

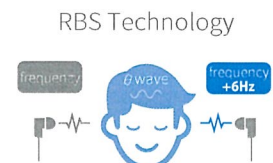
Table of Contents

What is RBS?	4
What's included	5
“Neurogixs Connect” application	6
Components and Functions	7
Charging	9
Power ON/OFF	10
Bluetooth pairing	12
Playing music (Tips)	18
RBS mode (Sleep-care mode) & Timer	19
LED functional indication	20
Initializing	21
Troubleshooting and common solutions	22
Specifications	24

What is RBS(Real-time Binaural Sound)?

DLOGIXS' world's first RBS technology was developed based on the Binaural Beats theory first found by a German physicist H.W.Dove. Binaural Beats is the third frequency sound that is generated to equalize the difference in frequencies injected into the left and right ears. It is known to have significant effects on improving one's sleep, meditation, mental and physical care, concentration, and etc. RBS technology real-time converts user's choice of any music into Binaural Beats music.

RBS function may be applied to all sound sources such as user's saved music data and streaming services. The conversion may be turned on and off while listening. One must wear earphones in order to hear the RBS mode.

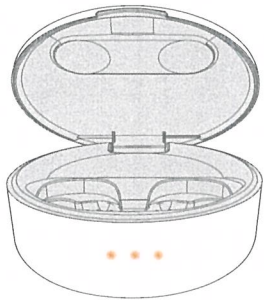


Real-time conversion of any sound into Binaural Beats with 6Hz difference on each ear.

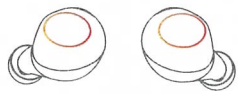
About “Neurogixs” Brand

“Neurogixs” is a new healthcare brand established to develop excellent ways to obtain ultimate health with our RBS technology. We invested 3 years of research and development, including the conduction of clinical research with the professions specializing in sleep and mental health at the Seoul National University Hospital in Korea. It is a brand made to scientifically analyze the association of sleep between health.

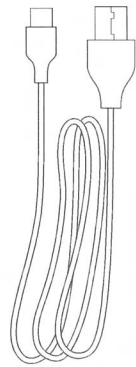
What's included



NRT-A1 body



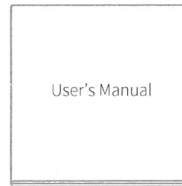
User's TWS
(True wireless earphones)



USB Type C
Charging Cable



Safety Cautions
Warranty



User's Manual



Ear covers
(S/M/L 3 sets)

"Neurogixs Connect" application

"Neurogixs Connect" is the application that allows users to pair the NRT-A1 body with the TWS earphones as well as operating RBS and Timer functions.



"Neurogixs Connect" application can be downloaded through the App Store or the Google Play Store.

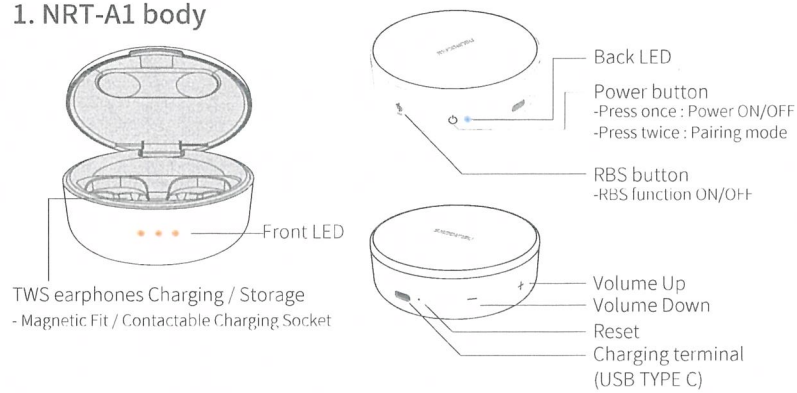


Neurogixs Connect

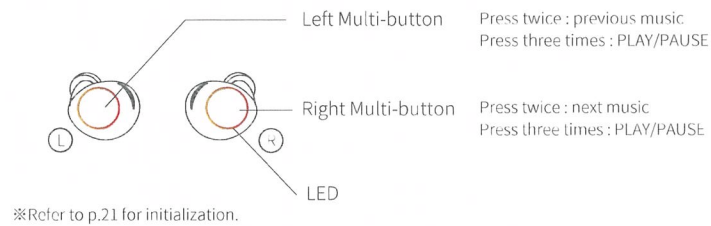
Search "Neurogixs Connect" to install the application.

Components and Functions

1. NRT-A1 body

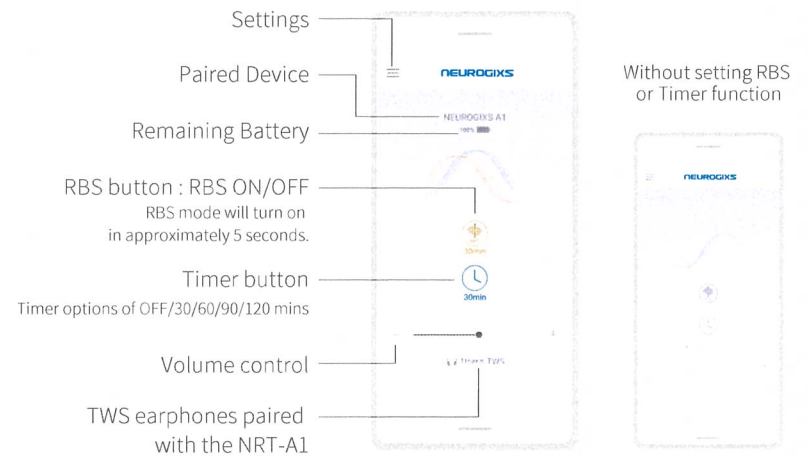


2. User's TWS



Components and Functions

3. “Neurogixs Connect” Application



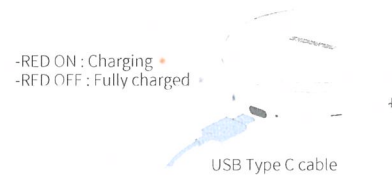
※If not Bluetooth paired or RBS function isn't turned on, the screen will be B&W.
 ※It does not provide other music player functions.

Charging

1. NRT-A1 body

Connect USB Type C cable to charge.

※Connect the included USB Type C cable to the AC adapter to charge.



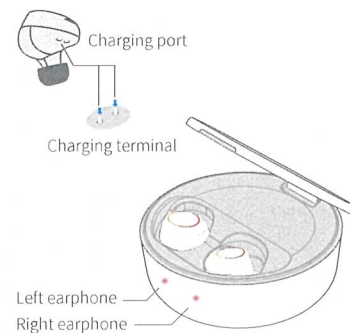
2. TWS earphones

The TWS earphones will power OFF and start charging while they are placed in the case.

The LED of the TWS earphones and the NRT-A1 body will light in RED while charging.

Place the earphones in the NRT-A1 case until it magnetically snaps into place.

※The battery of the left earphone will be consumed first.



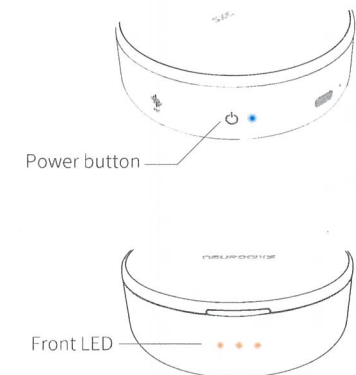
POWER ON/OFF

1. NRT-A1 body

Press the Power button once to Power ON/OFF.

The LED of the NRT-A1 will blink when Power ON.

The LED of the NRT-A1 will dim then turn off when Power OFF.



※Press the Power button twice to switch into pairing mode.

POWER ON/OFF

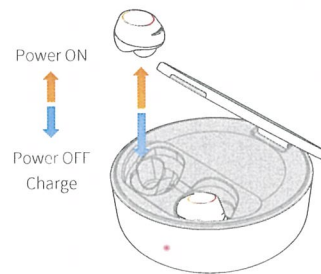
2. TWS earphones

Automatically Powers ON when the TWS earphones are removed from the NRT-A1 body.

When placed in the NRT-A1 body, the TWS earphones will Power OFF and turn into charging mode.

Place the TWS earphones in the NRT-A1 body to turn the Power back ON.

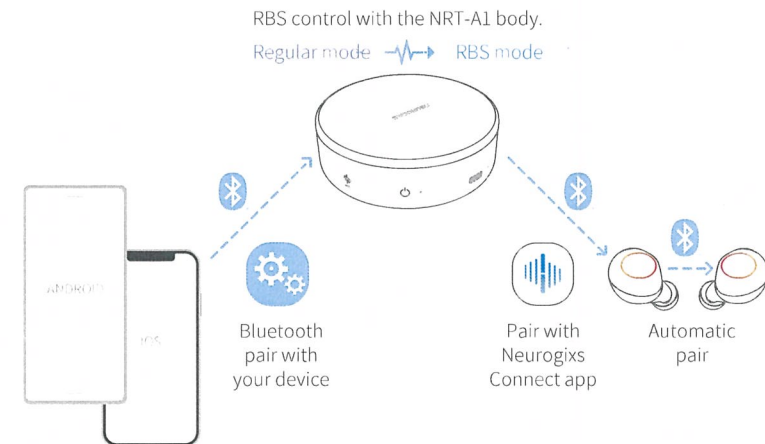
- ※ The earphones will automatically Power OFF within 5 minutes of the removal.
- ※ The earphones will Power OFF if the NRT-A1 runs out of battery while charging.
- ※ Make sure to carry NRT-A1 with you when using the TWS earphones. The earphones will again be ready to pair when the Bluetooth of your device is turned OFF. The earphones will turn off if they aren't paired for awhile.
- ※ Refer to p.14 for pairing the Left/Right earphones.



Bluetooth pairing

Bluetooth wireless technology lets you control the NRT-A1 using the Neurogixs Connect app on your mobile device.

Download the free Neurogixs Connect app, which you'll need to control your NRT-A1 and TWS earphones.

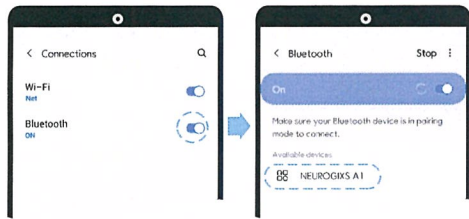


- ※ Refer to p.6 for downloading Neurogixs Connect app.
- ※ Avoid connecting to multiple NRT-A1 devices at once.

Bluetooth Pairing

1. Connecting your mobile device to NRT-A1

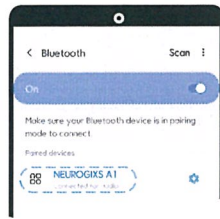
Pairing for the first time



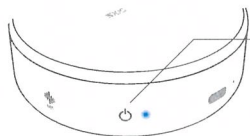
Connect with NRT-A1 in the Bluetooth Settings of your device.

When the NRT-A1 power on, the most recently-connected device automatically reconnects with the NRT-A1. Reset if the NRT-A1 does not connect with the recently-connected device.

Paired history



Press the power button 2 times to disconnect the currently paired device, then pair with the new device.



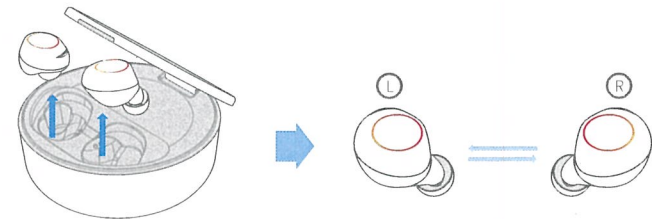
Pairing a new device.

Press the Power button 2 times to turn on pairing mode. Blue LED light will turn on. (The paired device will disconnect.)

- ※ If “NEUROGIXS A1” can’t be found in the Bluetooth device list,
- Press the A1 body power button twice.
 - Turn Bluetooth ON/OFF of your smartphone device.
 - Clear device list history (“NEUROGIXS A1”)
 - Re-set the A1 body.

Bluetooth Pairing

2. Connecting Left/Right TWS earphones with each other



The TWS earphones will automatically turn on when removed from the NRT-A1 at the same time.

The LED of the left earphones will blink in ORANGE and RED when successfully connected.

The NRT-A1 and the TWS earphones will automatically pair with each other when the earphones are connected with each other.

※ The battery of the left earphones will be consumed first

※ Refer to p.21 for initialization.

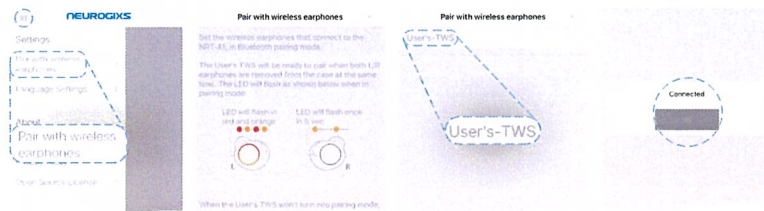
Bluetooth Pairing

3. Connecting Left/Right TWS earphones with each other

The NRT-A1 and the TWS earphones are already Bluetooth paired when first opened.

The NRT-A1 and the TWS earphones will automatically pair with each other when the earphones are connected with each other.

Select “Pair with TWS earphones” in the setup menu.



Select “Pair with TWS earphones” in the setup menu.

Select “Next” when the TWS earphones are ready to pair.

Select “User’s TWS” detected.

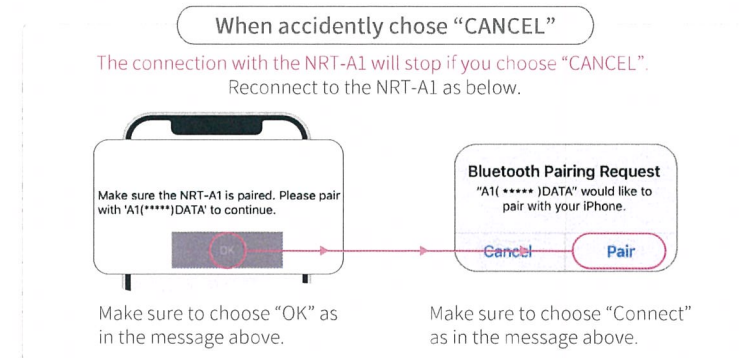
The results for the connection can be viewed with a pop-up message.

Bluetooth Pairing

4. Precautions with iOS devices



Make sure to proceed with pairing when the message on the left appears.



Make sure to choose “OK” as in the message above.

Make sure to choose “Connect” as in the message above.

Bluetooth Pairing

5. Precautions when connecting your device and TWS earphones.

You may directly pair your smartphone device and TWS earphones in case you would like to listen to regular music instead of RBS mode. However, observe the following precautions when changing the paired device.

Pairing your smartphone device and TWS earphones directly

Pair with the TWS earphones in your smartphone settings.

Using the TWS earphones back in RBS mode, once directly paired with your smartphone device.

Delete User's TWS on the connected device list on your smartphone Bluetooth settings.
Pair NRT-A1 and TWS earphones in the "Bluetooth pairing mode" Neurogixs Connect application.

※ The User's TWS earphones have Bluetooth multi connect function. In case the earphones are connected to both your smartphone device and the NRT-A1 body, the sound you are playing may actually be a regular sound source instead of RBS sound.

Playing Music (Tips)

Play your choice of any music through your smartphone device paired with the NRT-A1.

When RBS turns on any music of your choice will be converted into Binaural sound in real-time.



Any sound may convert into RBS sound.



※Refer to the next page for RBS conversion.

※Neurogixs Connect application does not include streaming services.

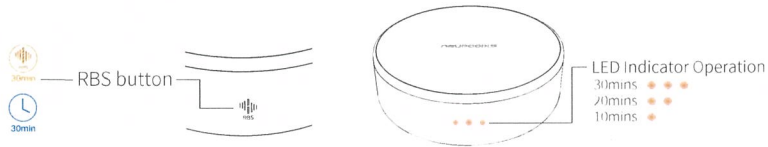
Tips

- Our recommendation is to convert music with slow rhythm, not loud and fast music.
- Use in peaceful environment.
- Keep the TWS earphones in the NRT-A1 to charge the battery.
- Be careful not to sleep with the earphones on as it may cause injury.

RBS mode (Sleep-care mode) & Timer

1. RBS function

RBS function can be turned ON/OFF with the RBS button of the NRT-A1. It can also be operated with the Neurogixs Connect app. RBS timer will automatically be set on 30 mins.

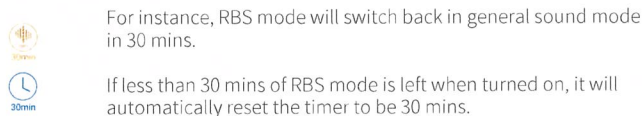


※The front LED will turn on when in RBS mode. Each of the 3 LEDs will turn off every 10 mins.

※It takes about 5 secs for RBS mode to turn on.

2. Timer function

The timer may only be operated with the Neurogixs Connect application. It operates separately from the RBS function.



LED functional indication

	Mode	ORANGE	RED	BLUE
	Charging NRT-A1		ON	
	Charging NRT-A1 (Bluetooth connected)		Blinks in RED and BLUE	
	Pairing mode			Flashes
	Bluetooth pairing			ON
	Volume control	- + Lights ON + volume		
	RBS Timer setting	10M 20M 30M Lights OFF by time		
	TWS charging (RBS OFF)		lights in RED (L/R)	
	TWS charging (RBS ON)	Flashes 3 times in Orange	lights in RED (L/R)	
	Power ON	Lights OFF after blinking 3 times		
	Power OFF	Dims then lights OFF		
	Troubleshooting	Flashes at 0.5 sec intervals		
	Charging		ON	
	Pairing mode			Left earphone LED flashes. Right earphone LED flashes at 5 sec intervals.
	Re-pairing mode	Left earphone LED dims then lights OFF. Right earphone LED flashes at 5 sec intervals.		
	Bluetooth pairing			

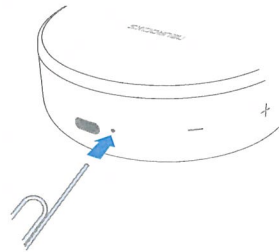
※ In case of an issue, turn the power OFF/ON or refer to p.21

Initializing

1. NRT-A1

Reset the NRT-A1 body if it stops operating or abnormality occurs.

To reset the NRT-A1 body, insert a thin paper clip into the hole next to the USB Type C connector. Press until you feel a click. The NRT-A1 will power off when initialized.

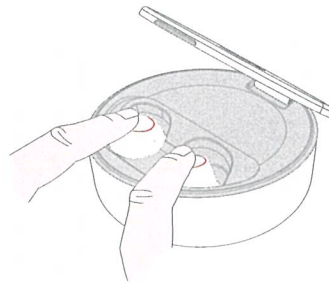


2. TWS earphones

Reset the TWS earphones if only one of the earphones operates.

Place both Left/Right earphones in the NRT-A1 body, then touch the multi buttons of the Left/Right earphones for about 10 seconds. The LED will blink 3 times when initialized.

If less than 30 minutes of RBS mode is remaining when turned on, it will automatically reset the timer to be 30 minutes. Once initialized, connect to the NRT-A1 with the Neurogixs Connect application.



Troubleshooting

- **The power doesn't turn on**
Check the battery state of the NRT-A1 with the Neurogixs Connect application. If insufficient, charge.
- **The NRT-A1 doesn't appear on the device list on your smartphone.**
Restart Bluetooth on your smartphone device. Or delete "NRT-A1" from the device list history. Keep your smartphone device and NRT-A1 as close as possible. (The maximum connection range is 10m.) Check the Bluetooth manual of your smartphone device. Refer to the LED indication chart to see if NRT-A1 is reachable.
- **The music stops when a phone call is received.**
Since this product does not support phone calls, it will Standby and the music may stop when a phone call is received. (The specific situation may differ due to the type of smartphone device and the music streaming service.)
- **Battery usage time has been reduced.**
Since the battery is consumable, the usage time will shorten in time. There is a possibility of a reduction in battery efficiency under excessive temperature conditions.
- **RBS button will not operate.**
RBS mode is available when the NRT-A1 and the User's TWS earphones are connected.
- **Playing RBS mode will result in poor sound quality.**
RBS mode adds RBS effect to music converted to MONO rather than STEREO. Sound quality may reduce, but the motion is normal.
- **There is a break in sound.**
Make sure there are no obstacles (e.g. microwave, wireless devices, etc.) that generate around 2.4GHz of electromagnetic waves. When moving, connect your smartphone device and earphones directly.
- **I have multiple NRT-A1 but I can't connect to them well.**
Avoid connecting to multiple NRT-A1 devices at once. Make sure to connect one at a time.
- **User's TWS earphones are not detected.**
Check if the User's TWS earphones are connected to another device. If so, disconnect then try again. Or check if it is in pairing mode. (Refer to p.15, p.17)

FCC ID: 2APRMNRTA1

WARNING & SAFETY INFORMATION

Warnings

When encountering this symbol in the manual, you must follow these recommendations to avoid irreparable damage to your car, system or connected devices or to avoid accidents with injuries or death.

FCC Compliance Statement

This device complies with part 15 of the FCC rules. Operation is subject to the following two conditions: (1) This device may not cause harmful interference, and (2) this device must accept any interference received, including interference that may cause undesired operation.

FCC Interference Statement

This equipment has been tested and found to comply with the limits for a Class B digital device, pursuant to part 15 of the FCC Rules. These limits are designed to provide reasonable protection against harmful interference in a residential installation. This equipment generates, uses and can radiate radio frequency energy and, if not installed and used in accordance with the instructions, may cause harmful interference to radio communications. However, there is no guarantee that interference will not occur in a particular installation. If this equipment does cause harmful interference to radio or television reception, which can be determined by turning the equipment off and on, the user is encouraged to correct the interference by one of the following measures:

- Reorient or relocate the receiving antenna.
- Increase the separation between the equipment and receiver.
- Connect the equipment into an outlet on a circuit different from which the receiver is connected.
- Consult the dealer or an experienced radio/TV technician for help.

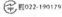


FCC Caution

Any changes or modifications not expressly approved by the party responsible for compliance could void the user's authority to operate this equipment. This transmitter must not be co-located or operating in conjunction with any other antenna or transmitter.

FCC Radiation Exposure Statement

This equipment complies with FCC radiation exposure limits set forth for an uncontrolled environment. This equipment should be installed and operated with the minimum distance 20 cm between the radiator and your body. This transmitter must not be co-located or operating in conjunction with any other antenna or transmitter.

Specifications

1	Bluetooth	Device ↔ NRT-A1 body NRT-A1 body ↔ User's TWS User's TWS L ↔ R BT Maximum distance range of 10m (This may vary depending on your environment)	BT4.1 BT3.0 BT5.0	 0022-190129  022-190128  0216-135297	2,4FH1
2	User's TWS Output	6mW + 6mW and above			
3	Charge time	NRT-A1 User's TWS	3hr 1.5hr		
4	Usage time	NRT-A1 User's TWS	9hr 3hr (at 30% volume)		
5	Charging terminal	USB Type-C (5V 500mA)			
6	Applicable temperature range	When stored When in use	-5°C ~ 40°C 0°C ~ 35°C		
7	Size	NRT-A1 body 86(W) * 86(L) * 32(H) mm			
8	Weight	NRT-A1 body User's TWS earphones	About 130g(without the TWS earphones) About 4.5g/1ea		

Licenses and Trademarks

- Bluetooth word mark and logo are registered trademarks owned by Bluetooth SIG, Inc.
- Apple and Apple logo are trademarks of Apple Inc. registered in the United States and other countries.
- Google Play and Google Play logo are trademarks of Google LLC.
- NEUROGIXS and NEUROGIXS logo are trademarks of Dlogixs Co., Ltd.

Applies to :

- NRT-A1-01W, NRT-A1-01B, NRT-A1-01G, NRT-A1-01D, NRT-A1-01I

NEUROGIXS

You can find detailed information about NRT-A1 and other products on our website.

www.neurogixs.com
www.dlogixs.com

