

Internal Photos

The following Photographs show the internal appearance of the WilliamsRDM Inc. STFS Plus with Sensor 679-S-3A and 679-SLC-3A products which both use the same circuit board 681-3-11. Figure 1 shows the inside of the STFS Plus with sensor product. The circuit board is battery powered and is wired to an electric match which is used to deploy the unit and extinguish a fire. Figure 1 shows the top of the circuit board and the internal housing of the STFS unit. Figures 2 and 3 show the top and bottom of the circuit board. Figure 4 shows a close up view of the circuit board with the radio components labeled.

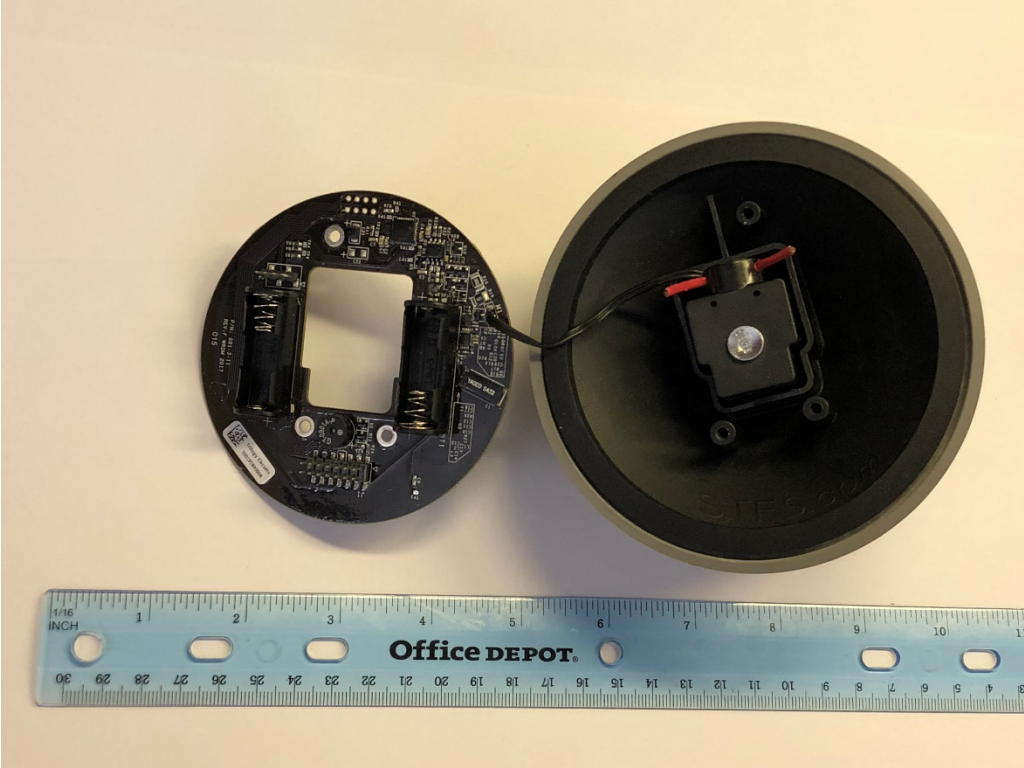


Figure 1 - Internal Photo

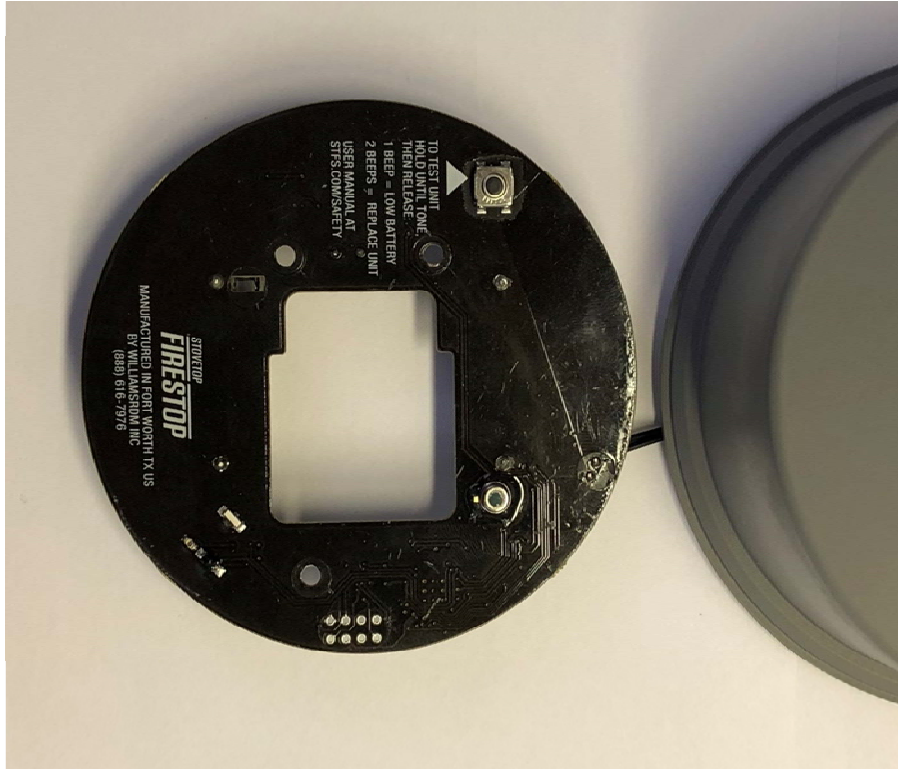


Figure 2 - Circuit Board Bottom

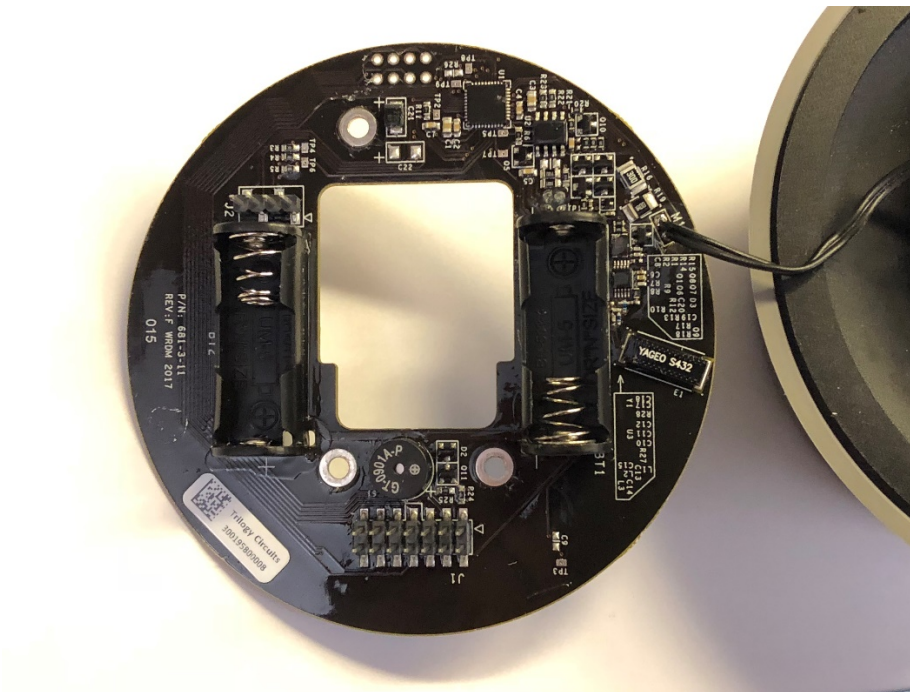


Figure 3 - Circuit Board Top

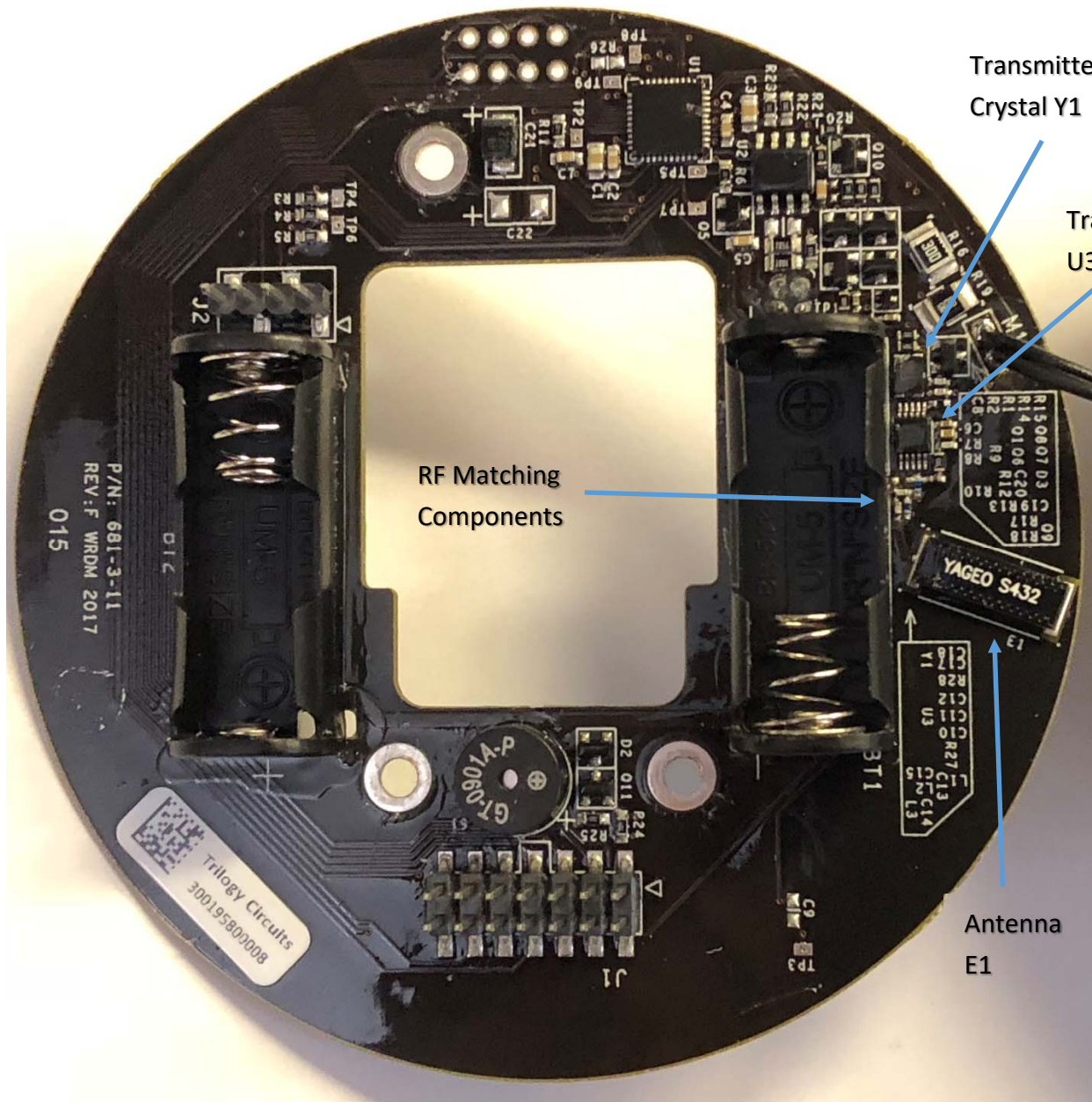


Figure 4 – Circuit Board Top Detail