

# JH-101

## OTA Test Report

<b>Client</b>	Shenzhen Jiuhu Technology Co.,Ltd
<b>Product</b>	JH-101 Bluetooth over ear headsetJH-101
<b>Engineer</b>	Yang Wensheng
<b>Tel:</b>	13422893817
<b>E-mail:</b>	RD54@boomtech.com
<b>Date</b>	2023-03-27
<b>Company</b>	Baitai Industry
<b>Address</b>	Floor 2,Building E,Baoan Zhigu ,No.4 Yintian Road,Xixiang Street,Baoan District,Shenzhen

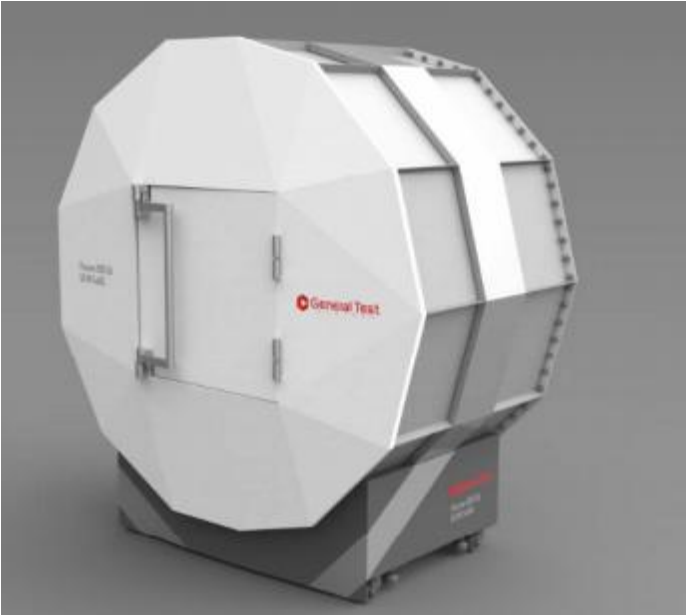
# Report catalog

- ⊗ Testing equipment
- ⊗ Sample visual looks
- ⊗ Matching parameter
- ⊗ S-parameters for network division antenna
- ⊗ Measurement of antenna efficiency field pattern in microwave darkroom
- ⊗ Microwave darkroom test OTA active data
- ⊗ Pull distance test
- ⊗ Summary of commissioning test

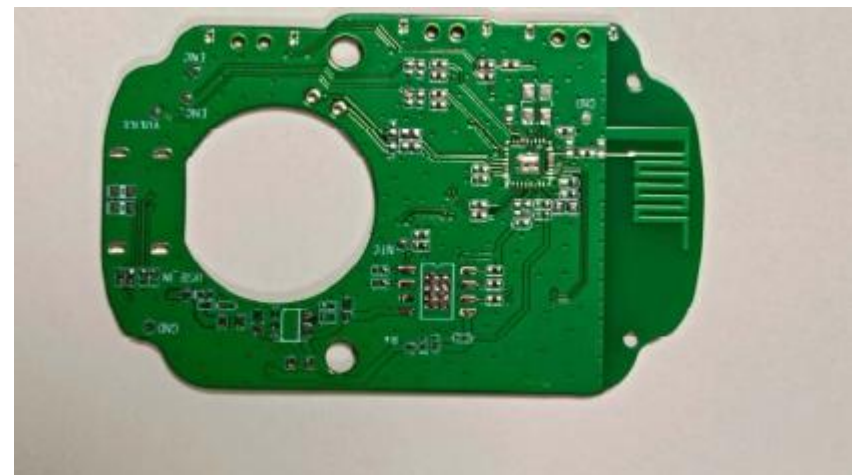
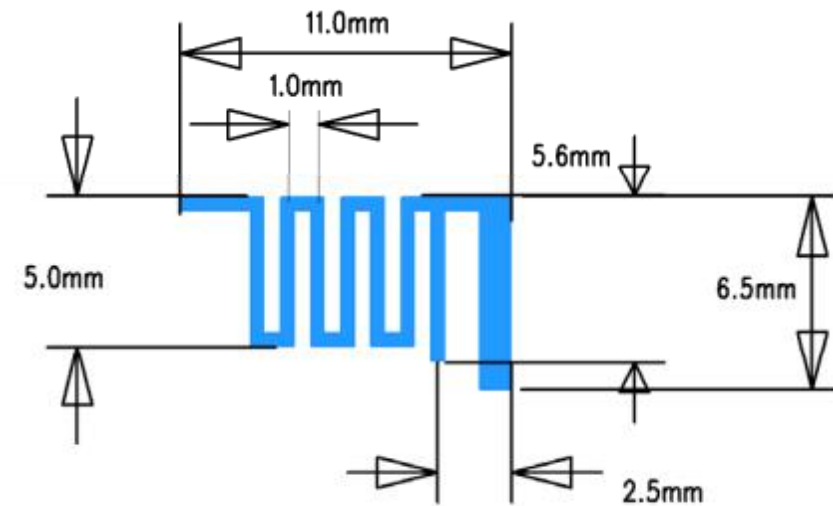
# Testing condition

- 1. S Parameter measurement
- 2. Equipment: network analyzer (Agilent E5062A), Microwave darkroom, MT8852B
- 3. Project: Impedance, Return loss, VSWR, efficiency, gain, Radiation field pattern, sensitivity, power watts, Frequency offset, Active data TRP TIS



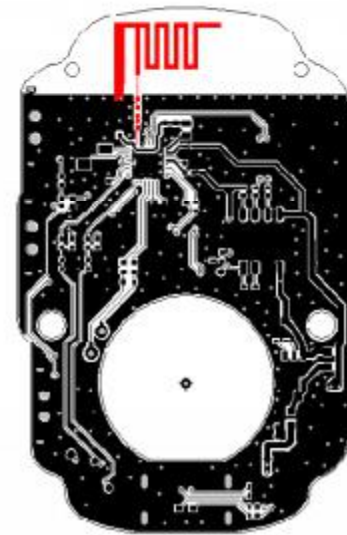
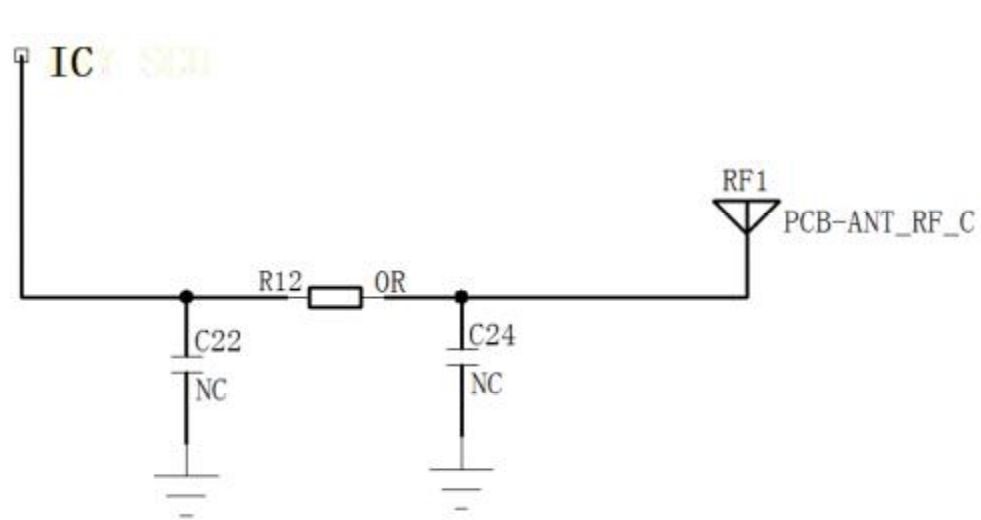


## Sample visual looks, antenna visual looks



Characteristics	Specifications
Working Frequency	2400~2500 MHz
Gain	0 dBi
Impedance	50 $\Omega$

## Matching parameter



number	Model	Specification	maufac turer	Maten al number	toleran ce	
R12	resistance	0 Ω				
G24	NC					
G22	NC					

# S-parameters for network division antenna

Debugging waveform



# Measurement of antenna efficiency field pattern in microwave darkroom



## 1. Measurement of antenna efficiency in microwave darkroom

Characteristic evaluation	Please tick according to actual test
6%	Low <input type="checkbox"/>
10%	Middle <input checked="" type="checkbox"/>



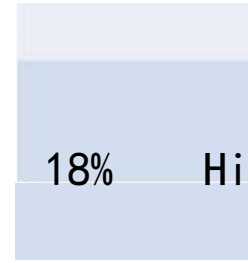
y



z



X



18% High

# Complete finished product free field OTA data

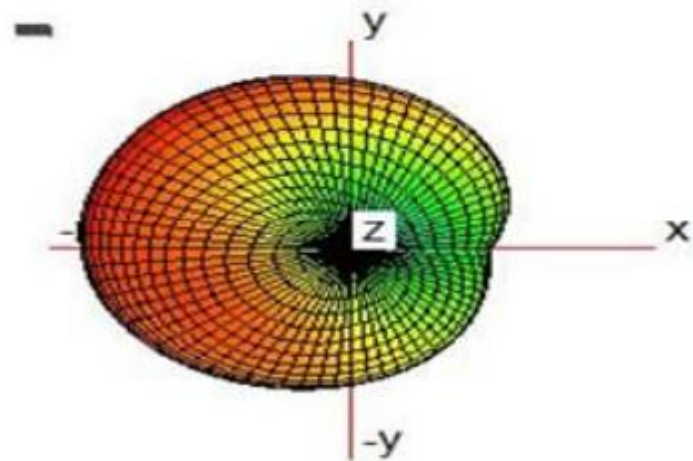
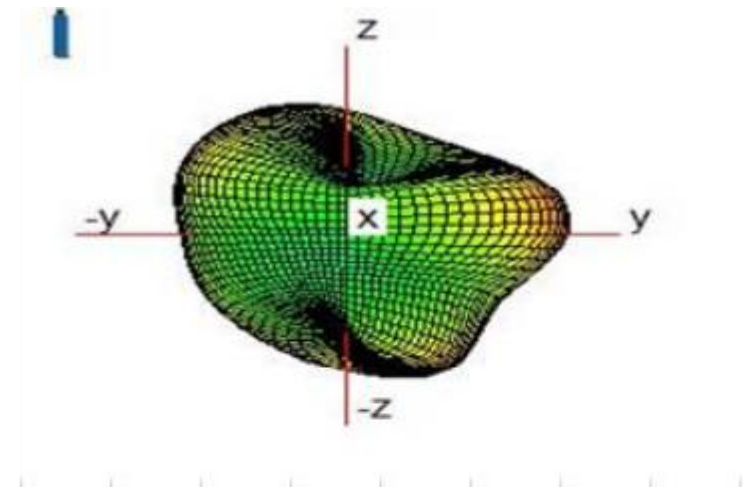
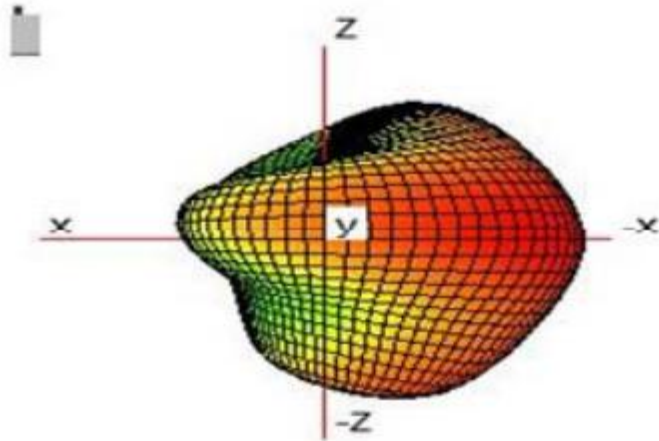
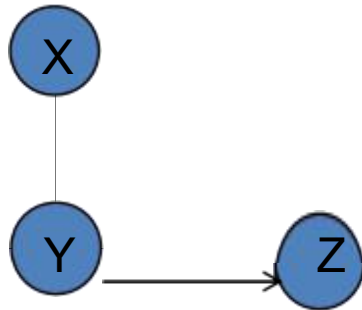
	Channel	TRP power watts (dBm)	TIS sensitivity (dBm)
JH-101	CH 0	5.86	-88.46
	CH 39	6.33	-88.43
	CH 78	5.62	-88.08

# Complete finished product of head OTA testing data

	Channel	TRP power watts (dBm)	TIS sensitivity (dBm)
JH-101	CH 0	2.88	-85.87
	CH 39	3.85	-86.27
	CH 78	3.59	-86.38

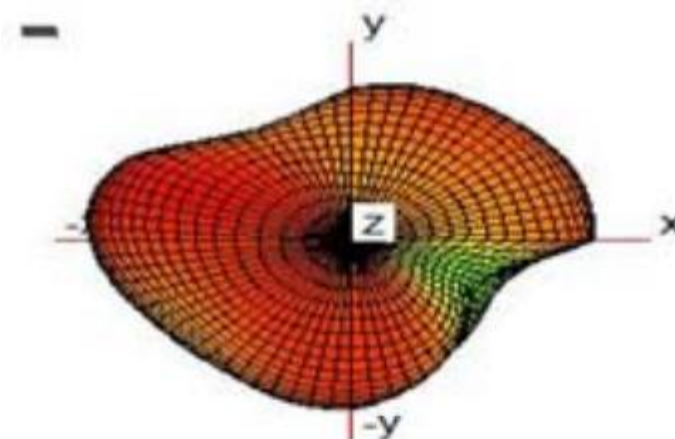
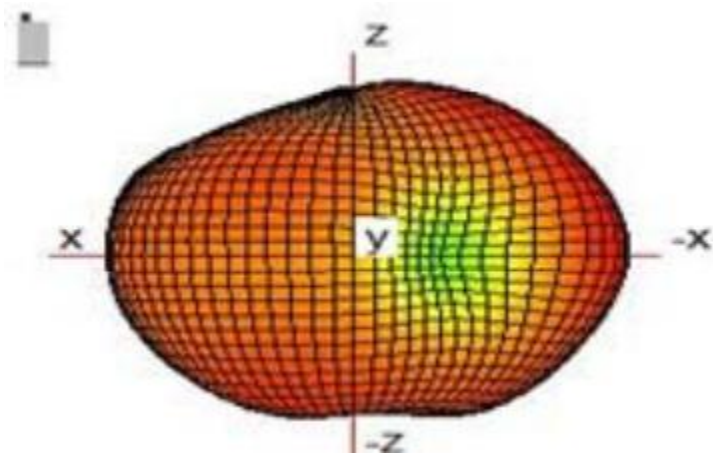
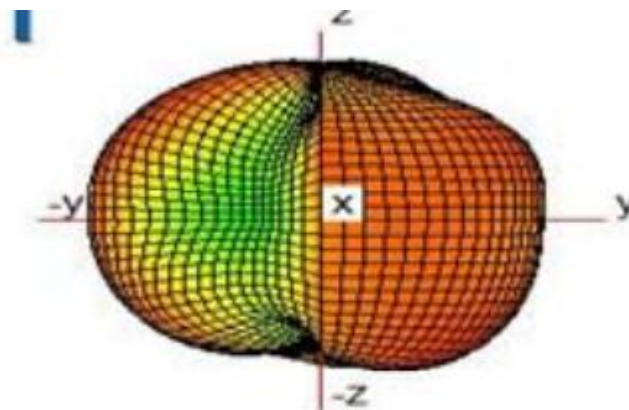
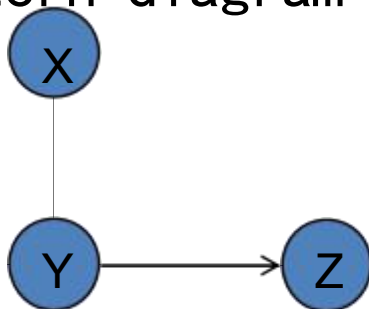
# Microwave darkroom simulation of head field type

Field pattern diagram



# Microwave-darkroom free field type

Field pattern diagram



# Pull distance test

## a. Environment / Mobile phone

Testing project	testing distance		Pocket test requirements (please describe below Project Test Distance)		Remarks
Apple 6S	6m	Low	Right fron	OK	
	8m	Middle <input type="checkbox"/>	Left front	OK	
	10m	High <input type="checkbox"/>	Right after	OK	
		<input checked="" type="checkbox"/>	Left after	OK	