

Quick Start Guide



Before operating this unit, please read these instructions carefully, and save them for future use.

ABOUT THIS GUIDE

Features of this product and iSeeHome App may vary by model and software version. All features, functionality and other product specifications are subject to change, without notice or obligation.

GETTING STARTED

Download iSeeHome

Scan to download the iSee Home App from the App Store. And follow the App prompts to create an iSee Home account or log in.



Download failed?
The iSeeHome app requires Android 5.1+ or iOS 12.0+ phones. Please check and update phone version.

1

Set Up Your Wi-Fi Camera

Step 1 Power On Your WiFi Camera

Connect the camera to a power outlet, the white light will come on and the device will start self-checking, Wait for 30 seconds until you hear the prompt " Please Configure the Network ".

On the phone, make sure that Wi-Fi and BT are on. Then connect your phone to a stable Wi-Fi network.



During the set up, maintain 2-3 meter (6-9 feet) between the camera and Wi-Fi router. Make sure there are no obstructions or objects that might block the signal from the router to your camera.

2

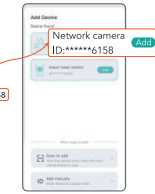
Step 2

On the home screen, tap Add smart device to add your camera.



Step 3

In the list of camera IDs, find the one to be set up, and tap Add. If no camera is found, tap Scan to add to scan the QR code of the camera and follow the on-screen instructions.



3

Step 4

Tap Select Wi-Fi, choose the Wi-Fi that your phone has connected to, enter the Wi-Fi password, and tap Next.



Step 5

When the prompt "The Wireless Connection is Successful" is heard, it indicates the setup is done.



4



All Set !

HOW TO RESET

The reset button is located on the top or bottom of the camera. You need to power on the device and wait for it to complete the self-check before starting the reset operation.

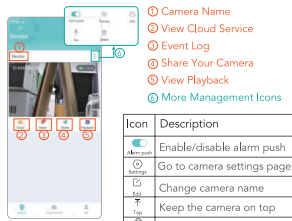
1. Press the reset button for 6-9 seconds until you hear 1 beep. This will reset the camera.
2. Wait at least 30 seconds for the camera to complete the self-test.
3. When you hear " Please configure the network", the camera is now ready to be set up again.

5

MAKE THE MOST OF ISEEHOME APP

Device Page

You can see all your connected devices listed in the device page. Tap on the camera video image to view live feeds.



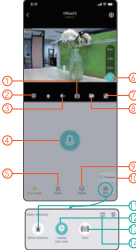
- 1 Camera Name
- 2 View Cloud Service
- 3 Event Log
- 4 Share Your Camera
- 5 View Playback
- 6 More Management Icons

Icon	Description
	Enable/disable alarm push
	Go to camera settings page
	Change camera name
	Keep the camera on top
	Delete the camera

6

Live Feed Page

Tap More on the bottom right corner to further manage the camera.

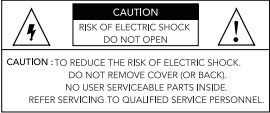


- 1 Take a Screenshot
- 2 Change Clarity
- 3 Mute&unmute
- 4 Hold to Talk
- 5 Events Log
- 6 Zoom
- 7 Full Screen
- 8 Record Video Clips
- 9 Photo Album
- 10 Playback History
- 11 Enable/disable Motion Detection
- 12 Enable/disable Auto Night Vision
- 13 Manually Trigger an Alarm
- 14 Share Your Camera

7

WARNING

TO PREVENT DAMAGE TO THE PRODUCT, FIRE, ELECTRICSHOCK, OR OTHER INJURY OR DAMAGE, PLEASE READ AND UNDERSTAND ALL WARNINGS AND INSTRUCTIONS.



FOR SAFE USE

1. This camera is not weatherproof and is designed for indoor use only. Please keep your camera dry, and do not expose the camera to liquids or extremely humid conditions. Do not attempt to disassemble the device yourself. It may pose a risk of electric shock. Contact Customer Support Team if the camera isn't working properly.

8

2. Please use your camera in environments within its operating temperature range: -4°to 140°F (-20 to 60°C). Avoid powering your device near any heat sources and in direct sunlight.
3. If your camera gets wet, do not attempt to dry it using an external heat source such as a hair dryer. Carefully unplug the cable without getting your hands wet and wait for the camera and adapter to dry completely.
4. Do not force the adapter into a power outlet. Only power the camera with a compatible power adaptor available. If the adapter or cable appears damaged, discontinue use immediately.
5. To clean the camera surface, please unplug the camera and power adaptor first, wipe gently with a soft cloth that is slightly damp with water and a touch of rubbing alcohol to remove smudges or dust. Not to use anything abrasive or harsh chemicals. After cleaning, wait for the camera to dry completely.

9

INFORMATION TO USER

FCC Statement

Note: This equipment has been tested and found to comply with the limits for a Class B digital device, pursuant to part 15 of the FCC rules. These limits are designed to provide reasonable protection against harmful interference in a residential installation. This equipment generates, uses and can radiate radio frequency energy and, if not installed and used in accordance with the instructions, may cause harmful interference to radio communications. However, there is no guarantee that interference will not occur in a particular installation. If this equipment does cause harmful interference to radio or television reception, which can be determined by turning the equipment off and on, the user is encouraged to try to correct the interference by one or more of the following measures:

- Reorient or relocate the receiving antenna.
- Increase the separation between the equipment and receiver.
- Connect the equipment into an outlet on a circuit different from that to which the receiver is connected.
- Consult the dealer or an experienced radio/TV technician for help.

10

Important: Change or modifications not expressly approved by the manufacturer responsible for compliance could void the user's authority to operate the equipment. (Example- use only shielded interface cables when connecting to computer or peripheral devices). This device complies with Part 15 of the FCC Rules. Operation is subject to the following two conditions:
(1) This device may not cause harmful interference, and
(2) This device must accept any interference received, including interference that may cause undesired operation.

FCC Radiation Exposure Statement:

The equipment complies with FCC Radiation exposure limits set forth for uncontrolled environment. This equipment should be installed and operated with minimum distance 20cm between the radiator and your body.



11

制作要求

- 1、折后净尺寸：80x80mm，展开尺寸：480x80mm
- 2、材质：128克铜版纸
- 3、工艺：双面彩色印刷，风琴折