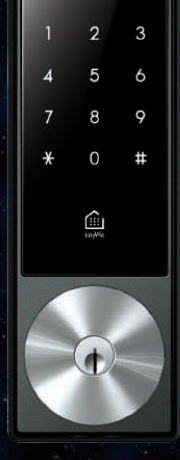


for a smarter life

Installation Guide

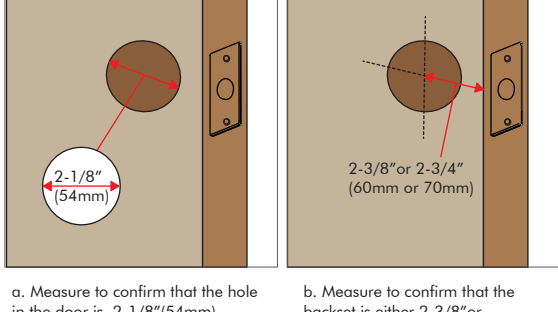


1. Tools & Parts

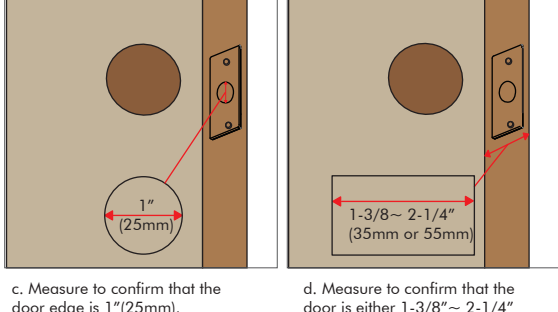
Required tools 	Additional tools (Depending on Application)
Parts in the box 	

2. Prepare the door and check dimensions

If drilling a new door, use the supplied template and complete the door drilling instructions.



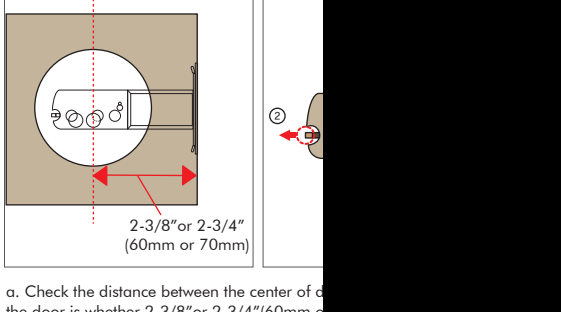
a. Measure to confirm that the hole in the door is 2-1/8" (54mm).
 b. Measure to confirm that the backset is either 2-3/8" or 2-3/4" (60mm or 70mm).



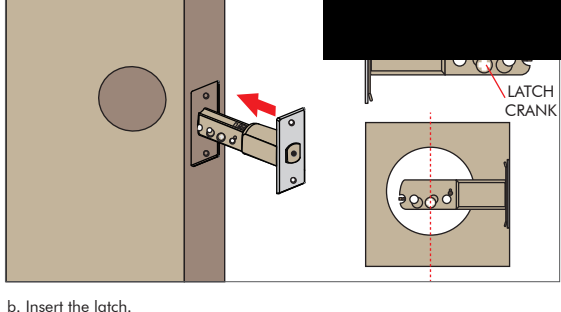
c. Measure to confirm that the door edge is 1" (25mm).
 d. Measure to confirm that the door is either 1-3/8" ~ 2-1/4" (35~55mm).

3. Install the latch and strike

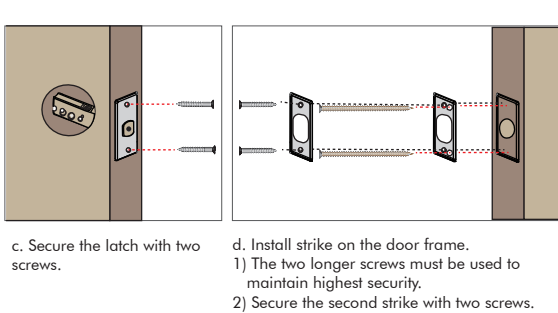
Check the door edge is chiseled or not. If not, please make the chiseled edge to fix the hole. (Use the supplied template and complete the door drilling instructions.)



a. Check the distance between the center of the door hole and the edge. If not, please make the chiseled edge to fix the hole. (Use the supplied template and complete the door drilling instructions.)
 1) If 2-3/8" (60mm), proceed to next step (3-b)
 2) If 2-3/4" (70mm), extend the latch as the picture shows.



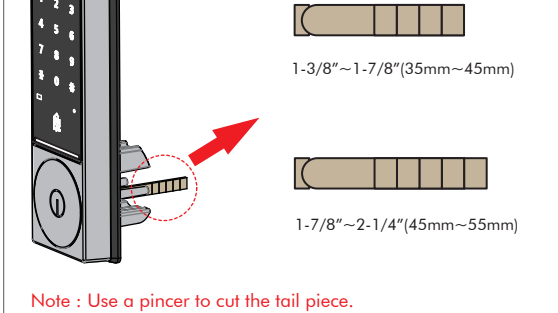
b. Insert the latch. Make sure the "UP" mark on the latch is on top. And check the latch crank is on the center of the door hole.



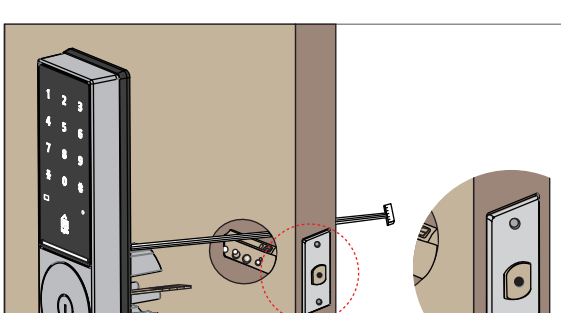
c. Secure the latch with two screws.
 d. Install strike on the door frame.
 1) The two longer screws must be used to maintain highest security.
 2) Secure the second strike with two screws.

4. Install the Exterior Assembly

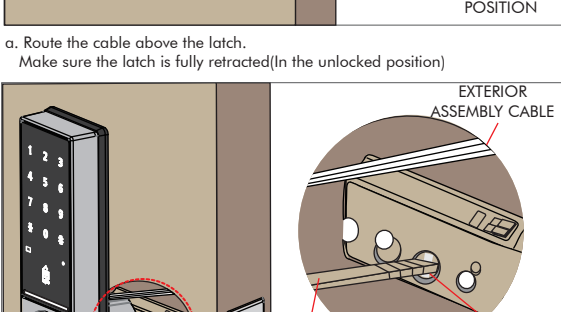
What is the thickness of your door?
 1) 1-3/8" ~ 1-7/8" : No required to replace the tail of key cylinder. (35~45mm) (Leave 4 spaces on the tail piece)
 2) 1-7/8" ~ 2-1/4" : Replace the Key cylinder tail in the parts box. (45mm~55mm) And cut the space. (Leave 5 spaces on the tale)



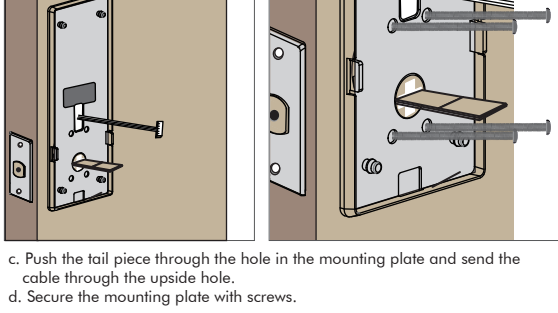
Note : Use a pincer to cut the tail piece. Do not use a saw to cut it. Please check how to cut the tail piece on KeyWe website.



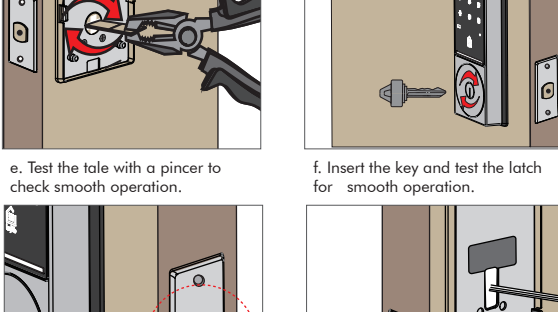
a. Route the cable above the latch. Make sure the latch is fully retracted (In the unlocked position).



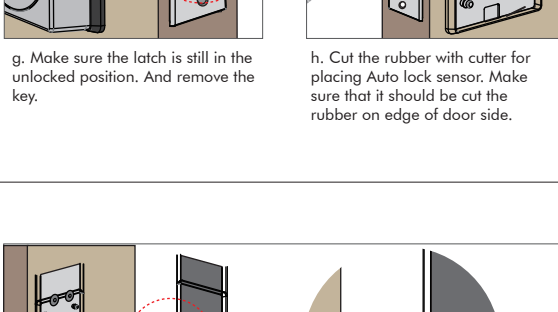
b. Insert the Exterior Assembly.
 1) Make sure that the tail piece should be inserted horizontally through latch crank.
 2) Press the exterior assembly flush against the door.



c. Push the tail piece through the hole in the mounting plate and send the cable through the upside hole.
 d. Secure the mounting plate with screws.

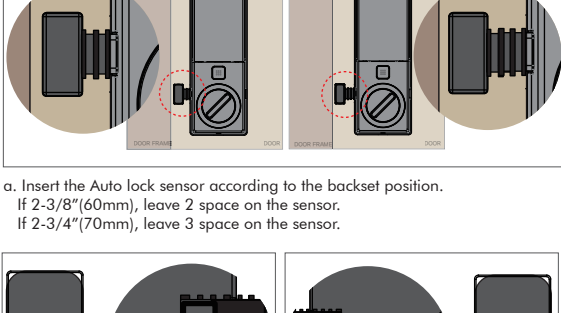


e. Test the latch with a pincer to check the smooth operation.
 f. Insert the key and test the latch for smooth operation.

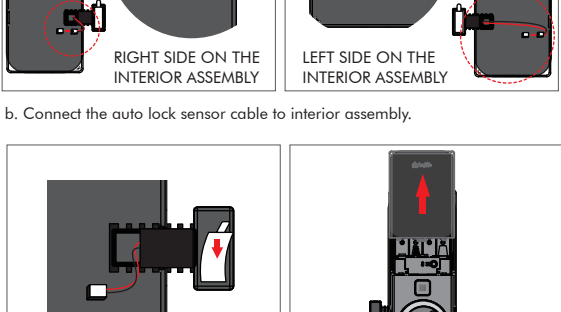


g. Make sure the latch is still in the unlocked position. And remove the key.
 h. Cut the rubber with cutter for placing auto lock sensor. Make sure that it should be cut the rubber on edge of door side.

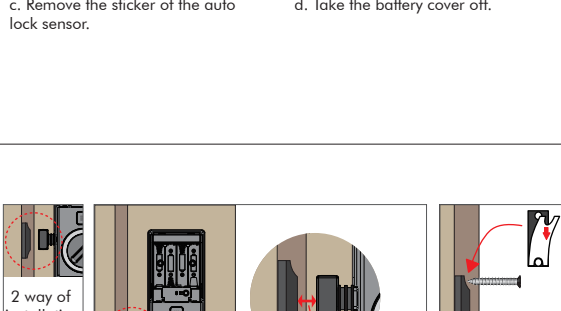
5. Install the Interior Assembly



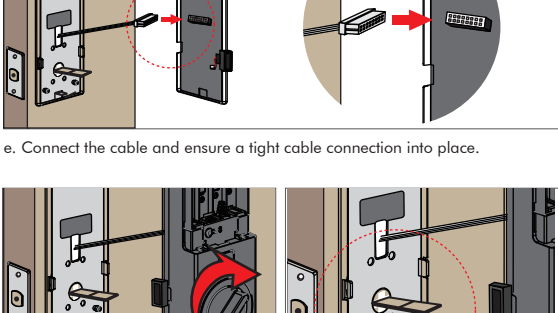
a. Insert the Auto lock sensor according to the backset position.
 If 2-3/8" (60mm), leave 2 space on the sensor.
 If 2-3/4" (70mm), leave 3 space on the sensor.



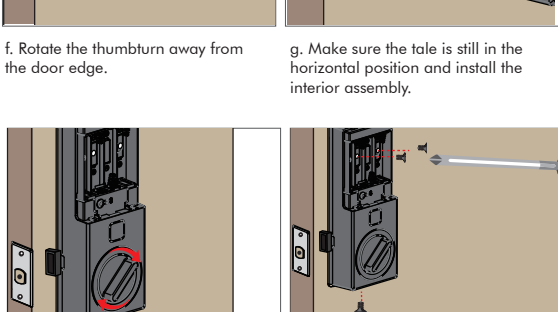
b. Connect the auto lock sensor cable to interior assembly.



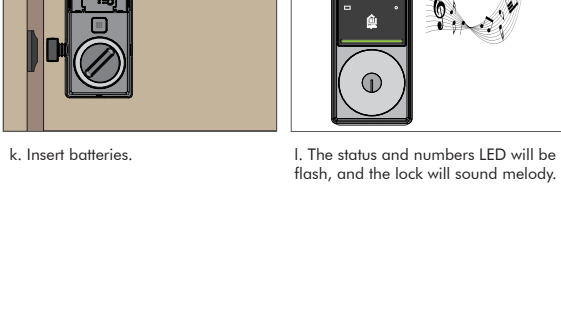
c. Remove the sticker of the auto lock sensor.
 d. Take the battery cover off.
 j. Attach the magnet for auto lock sensor. Remove the sticker and attach it to the door frame. Tighten the screws depending on the door status. The distance of between Auto Lock sensor and Magnet should not be over 3/5" (16mm).



f. Rotate the thumbturn away from the door edge.
 g. Make sure the tale is still in the horizontal position and install the interior assembly.



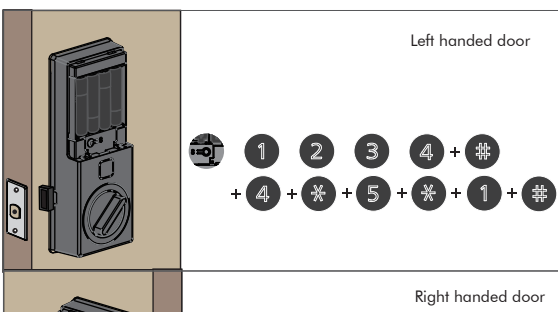
h. Test the thumbturn for smooth rotation. If thumbturn doesn't rotate, check again it is rotated away from the door edge (5-f).
 i. Secure the interior assembly with the screws.



k. Insert batteries.
 l. The status and numbers LED will be flash, and the lock will sound melody.

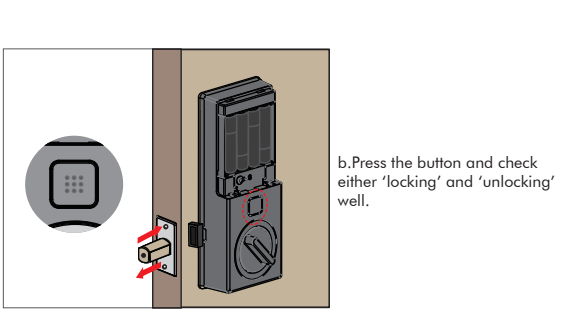
6. Set up and Test

Do not install battery cover yet!
 Make sure the latch is in the unoced position and the door is open.

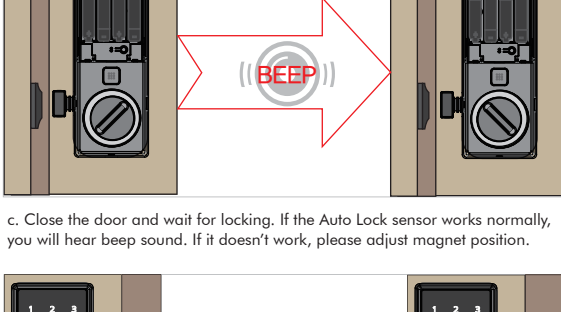


a. Set the door type.
 1) Right handed door : [Set up button] + [1234] + [#] + [4] + [*] + [5] + [*] + [2] + [#]
 2) Left handed door : [Set up button] + [1234] + [#] + [4] + [*] + [5] + [*] + [1] + [#]

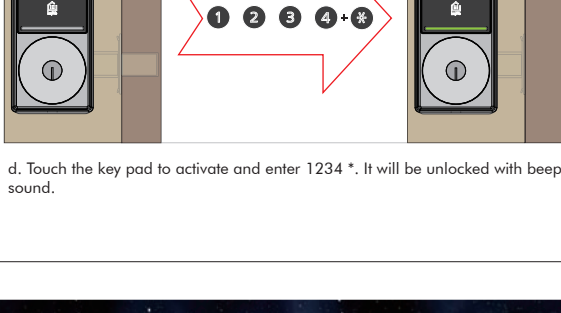
Note : The factory default is Left handed door.



b. Press the button and check either 'locking' and 'unlocking' well.



c. Close the door and wait for locking. If the Auto Lock sensor works normally, you will hear beep sound. If it doesn't work, please adjust magnet position.



d. Touch the key pad to activate and enter 1234 *. It will be unlocked with beep sound.

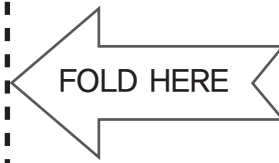
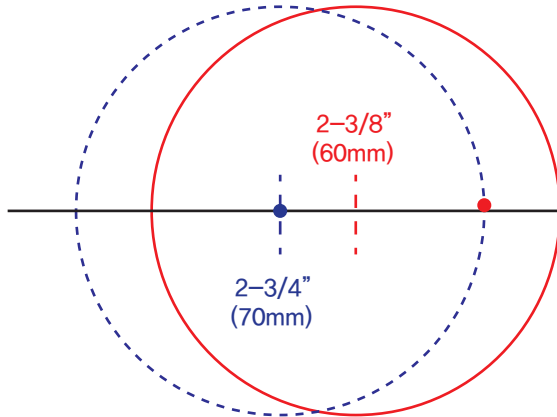


d. Install battery cover and close the door.

Congratulations. All installation completed. Check the App and Programming guide for usage.



DRILL 2-1/8" (54mm) HOLE



1-3/8" (35mm) THICK DOOR 2-5/8" (55mm) THICK DOOR

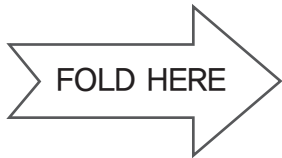


1-3/4" (45mm) THICK DOOR

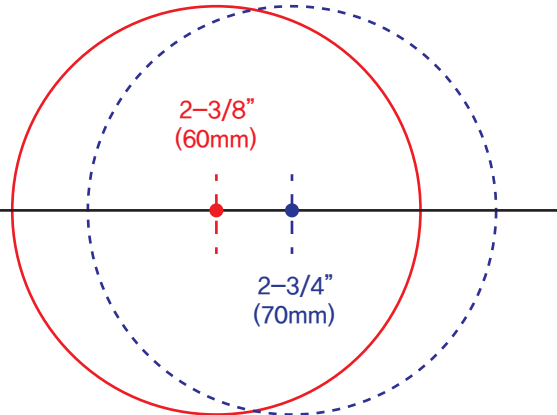
MARK PROPER DOOR THICKNESS

DRILL 1" HOLE IN EDGE OF DOOR(2" IN DEPTH)

NOTE : TEMPLATE MUST BE PLACED ON HIGH EDGE OF DOOR BEVEL



DRILL 2-1/8" (54mm) HOLE



2-5/8" (55mm) THICK DOOR 1-3/8" (35mm) THICK DOOR



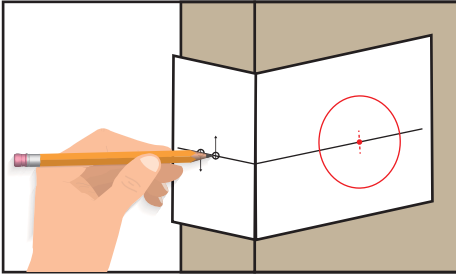
MARK PROPER DOOR THICKNESS

1-3/4" (45mm) THICK DOOR

DRILL 1" HOLE IN EDGE OF DOOR(2" IN DEPTH)

NOTE : TEMPLATE MUST BE PLACED ON HIGH EDGE OF DOOR BEVEL

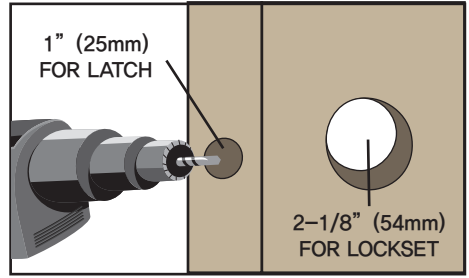
1. MARK DOOR



- Fold and apply template on high edge of door bevel and mark center of door edge as indicated on template at the desired height from the floor.
- Mark center hole on door face through guide on template for either 2-3/8" or 2-3/4" (60mm or 70mm) backset.

NOTE : BACKSET ON DOOR FACE MUST BE SAME AS BACKSET OF YOUR LOCK.

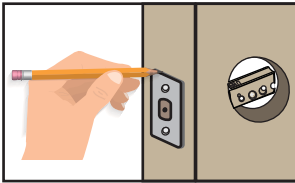
2. DRILL HOLES



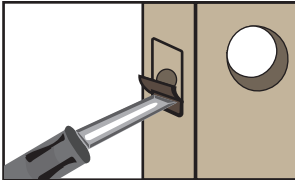
- Drill holes as marked.

NOTE : DRILL 2-1/8" (54mm) HOLE FROM BOTH SIDES OF DOOR TO AVOID SPLITTING WOOD.

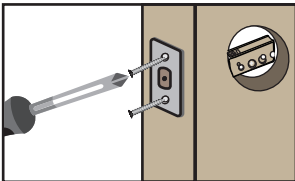
3. INSTALL LATCH



- Insert latch in hole. Mark outline of face plate and remove latch.

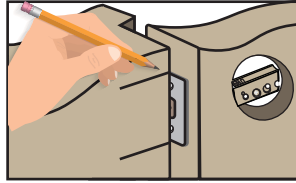


- Chisel 1/8" (3mm) deep or until face plate flush with door edge.

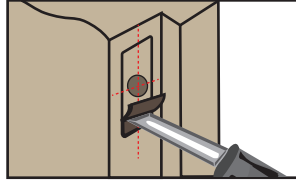


- Insert latch in hole. Mark outline of face plate and remove latch.

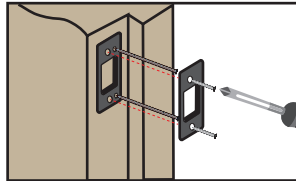
4. INSTALL STRIKE



- Close door to mark horizontal center line of strike.



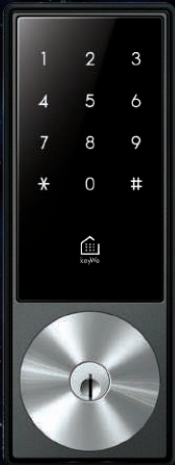
- Measure one half of door thickness from door stop and mark vertical center line of strike. Drill 1" (25mm) deep at intersection of horizontal and vertical center line of strike. Match screw holes on strike with center lines on jamb. Mark outline and chisel 5/64" (2mm) deep for strike.



- Install strike and tighten screws.

for a
smarter
life

Programming Guide










1. Creating Master Code

Creating a master code must be performed upon installation or after resetting the lock to factory default.

 + MASTER CODE +  + 1 +  + ENTER NEW MASTER CODE
+  + RE-ENTER NEW MASTER CODE + 

NOTE: FACTORY DEFAULT MASTER CODE : 1234

2. Creating User Passcode

 + MASTER CODE +  + 2 +  + 1 +  + BANK NUMBER
+  + ENTER NEW USER PASSCODE +  + RE-ENTER NEW USER
PASSCODE + 






3. Deleting User Passcode

 + MASTER CODE +  + 2 +  + 2 +  + BANK NUMBER
+ 

4. Adding Card

 + MASTER CODE +  + 3 +  + 1 +  + BANK NUMBER
+  + TOUCH NEW CARD + 

5. Deleting Card

 + MASTER CODE +  + 3 +  + 2 +  + BANK NUMBER
+ 

6. Two-Factor Authentication

ENABLE

 + MASTER CODE +  + 4 +  + 1 +  + 1 + 

DISABLE

 + MASTER CODE +  + 4 +  + 1 +  + 2 + 

7. VOLUME

MUTE

 + MASTER CODE +  + 4 +  + 2 +  + 1 + 

NORMAL

 + MASTER CODE +  + 4 +  + 2 +  + 2 + 

HIGH

 + MASTER CODE +  + 4 +  + 2 +  + 3 + 

8. AUTO/MANUAL LOCK

AUTO

 + MASTER CODE +  + 4 +  + 3 +  + 1 + 

MANUAL

 + MASTER CODE +  + 4 +  + 3 +  + 2 + 






9. AUTO LOCKING TIME

 + MASTER CODE +  + 4 +  + 4 +  + 1~30 + 


NOTE: ENTER 1~30(SEC) FOR AUTO LOCKING

10. RESET

DOOR LOCK RESET

 + MASTER CODE +  + 5 +  + 1 +  + MASTER CODE
+ 

FACTORY DEFAULT RESET

 + MASTER CODE +  + 5 +  + 2 +  + MASTER CODE
+ 



Important safeguard

- Read all instructions in their entirety.
 - Familiarize yourself with all warning and caution statements.
 - Remind all family members of safety precautions.
 - Always have access to your lock's standard key.
 - If using the Auto-Lock features, remember you passcode, bring your mobile or standard key with you to prevent locking yourself out.
 - Familiarize yourself with all light ring error notifications.
 - Replace low batteries immediately.
- 1) Restrict access to your KeyWe lock's back panel and routinely check your settings to ensure they have not been altered without your knowledge.
 - 2) Protect the password to your KeyWe app and web portal accounts.
 - 3) Protect and restrict access to your smartphone so that your app settings cannot be altered without your knowledge.
 6. Enable the KeyWe app's security passcode so that your app settings cannot be altered without your knowledge.
 7. When inviting someone from app, be aware of the difference between an admin user and other users in the system.
 8. If your smartphone is lost or stolen, use the KeyWe web portal (www.mykeywe.thekeywe.com) to disable it

⚠Caution: As with any radio-based technology, it should be noted that the accuracy and reliability of the KeyWe lock's inside-outside sensor cannot be guaranteed. Users should not rely solely on the KeyWe lock's sensor for security purposes and should always use caution. This manufacturer assumes no responsibility for incorrect results or damages resulting from the use of the KeyWe lock's sensor. Certain home configurations may impede the KeyWe lock's sensor more than others.

⚠Warning: This Manufacturer advises that no lock can provide complete security by itself. This lock may be defeated by forcible or technical means, or evaded by entry elsewhere on the property. No lock can substitute for caution, awareness of your environment, and common sense. Builder's hardware is available in multiple performance grades to suit the application. In order to enhance security and reduce risk, you should consult a qualified locksmith or other security professional.

Regulatory Compliance

This product complies with standards established by the following regulatory bodies:

- Federal Communications Commission (FCC)
- Industry Canada

FCC

This device complies with Part 15 of the FCC Rules. Operation is subject to the following two conditions:

- (1) this device may not cause harmful interference, and
- (2) this device must accept any interference received, including interference that may cause undesired operation.

This equipment has been tested and found to comply with the limits for a Class B digital device, pursuant to Part 15 of the FCC Rules. These limits are designed to provide reasonable protection against harmful interference in a residential installation. This equipment generates, uses, and can radiate radio frequency energy and, if not installed and used in accordance with the instructions, may cause harmful interference to radio communications.

However, there is no guarantee that interference will not occur in a particular installation. If this equipment does cause harmful interference to radio or television reception, which can be determined by turning the equipment off and on, the user is encouraged to try to correct the interference by one or more of the following

measures:

- Reorient or relocate the receiving antenna.
- Increase the separation between the equipment and receiver.
- Connect the equipment into an outlet on a circuit different from that to which the receiver is connected.
- Consult the dealer or an experienced radio/ TV technician for help.

IMPORTANT! Changes or modifications not expressly approved by the manufacturer could void the user's authority to operate the equipment.

Industry Canada

This device complies with Industry Canada licence exempt RSS standard(s). Operation is subject to the following two conditions:

- (1) this device may not cause interference, and
- (2) this device must accept any interference, including interference that may cause undesired operation of the device.

FCC Radiation Exposure Statement

The equipment complies with FCC Radiation exposure limits set forth for uncontrolled environment. This equipment should be installed and operated with minimum distance 50 mm between the radiator and your body.

Electronic Specifications

Door Prep	2-1/8" diameter face hole & 1" diameter latch hole
Backset	Adjustable to 2-3/8" or 2-3/4".
Door Thickness	1-3/8" to 2-1/4"
Bolt	1" throw.
Batteries	4 AA.
Pass Code	20
Card(NFC)	20
Key	3EA
Wireless	BLE, Z-Wave
RF Information	13.56MHz : Card(NFC) 2.4GHz : BLE 908.4MHz, 916MHz : Z-Wave