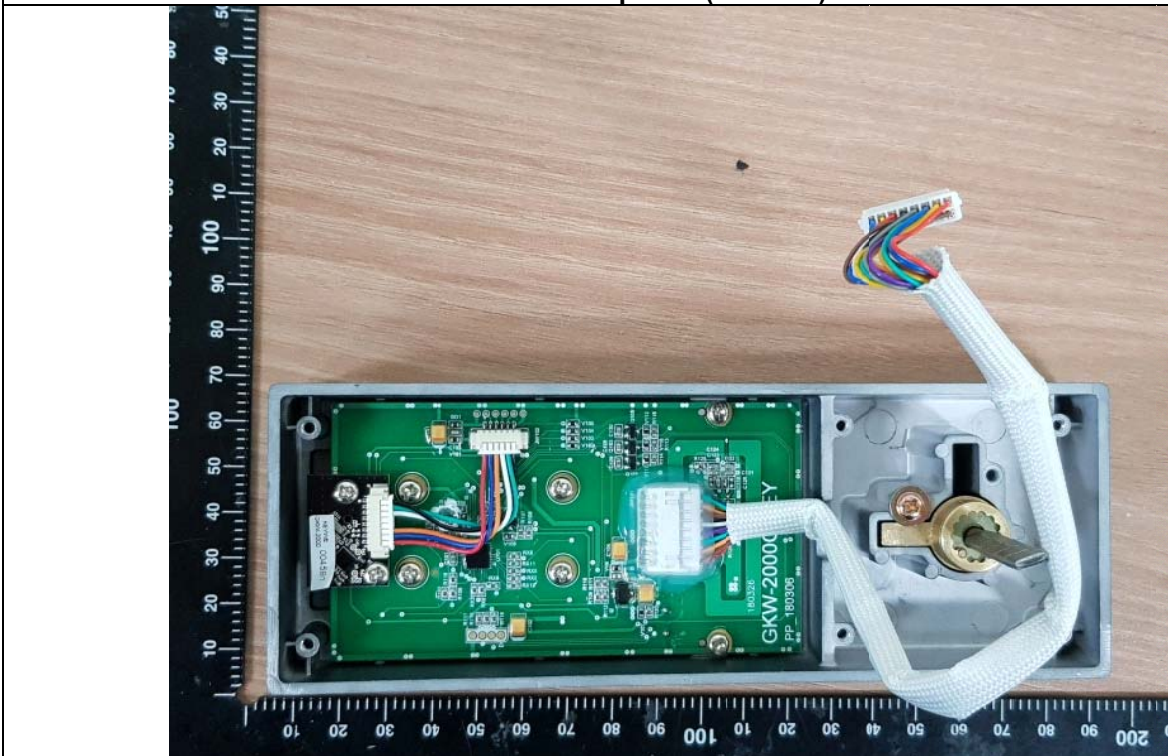


Internal Photo

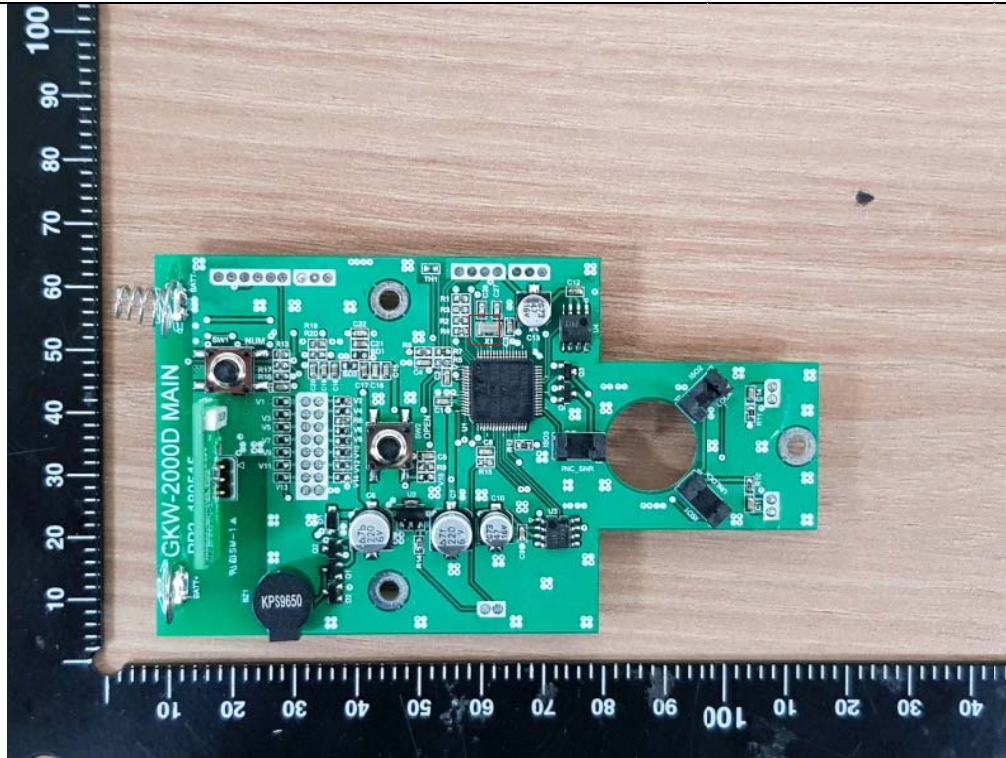
Cover opened (Indoor)



Cover opened (Outdoor)



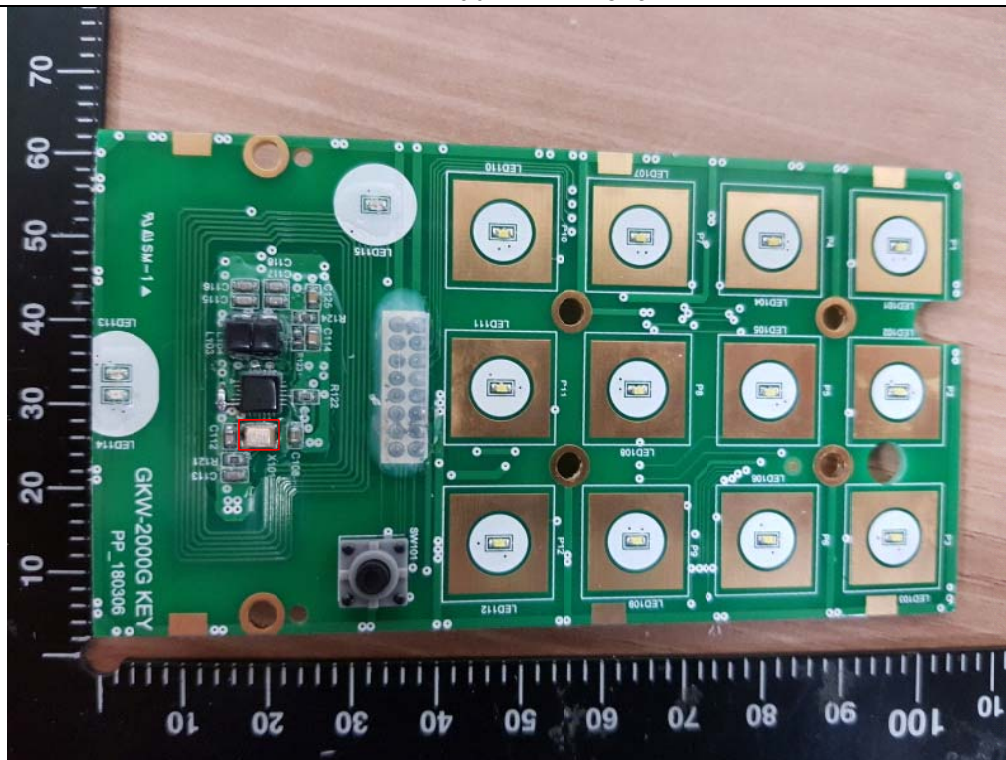
Main board - Front



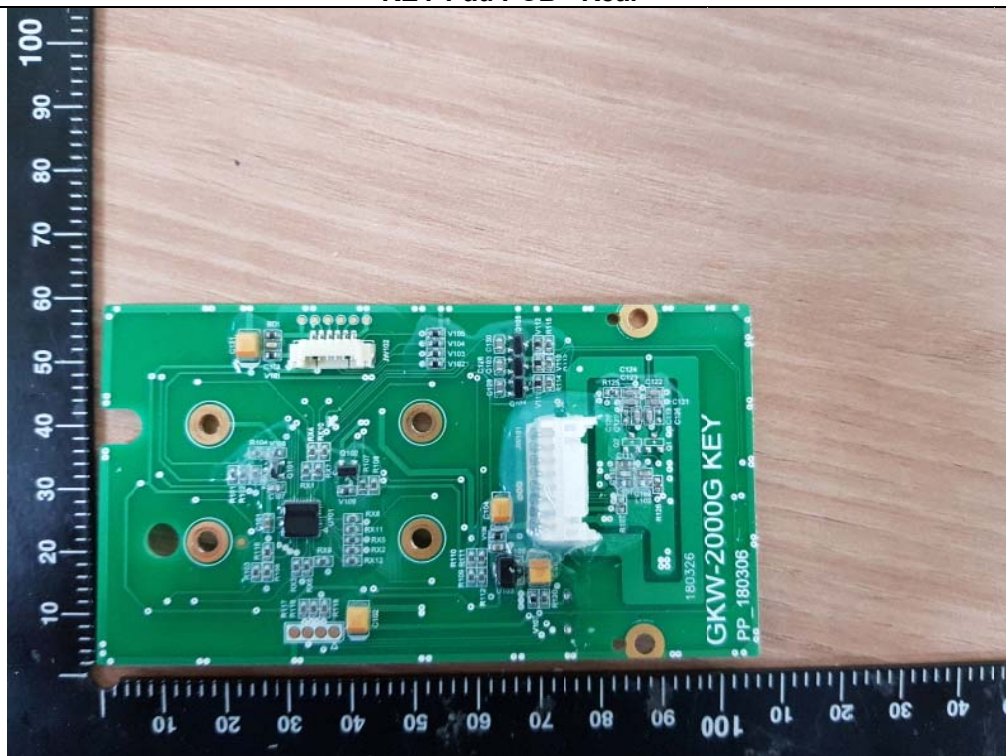
Main board - Rear



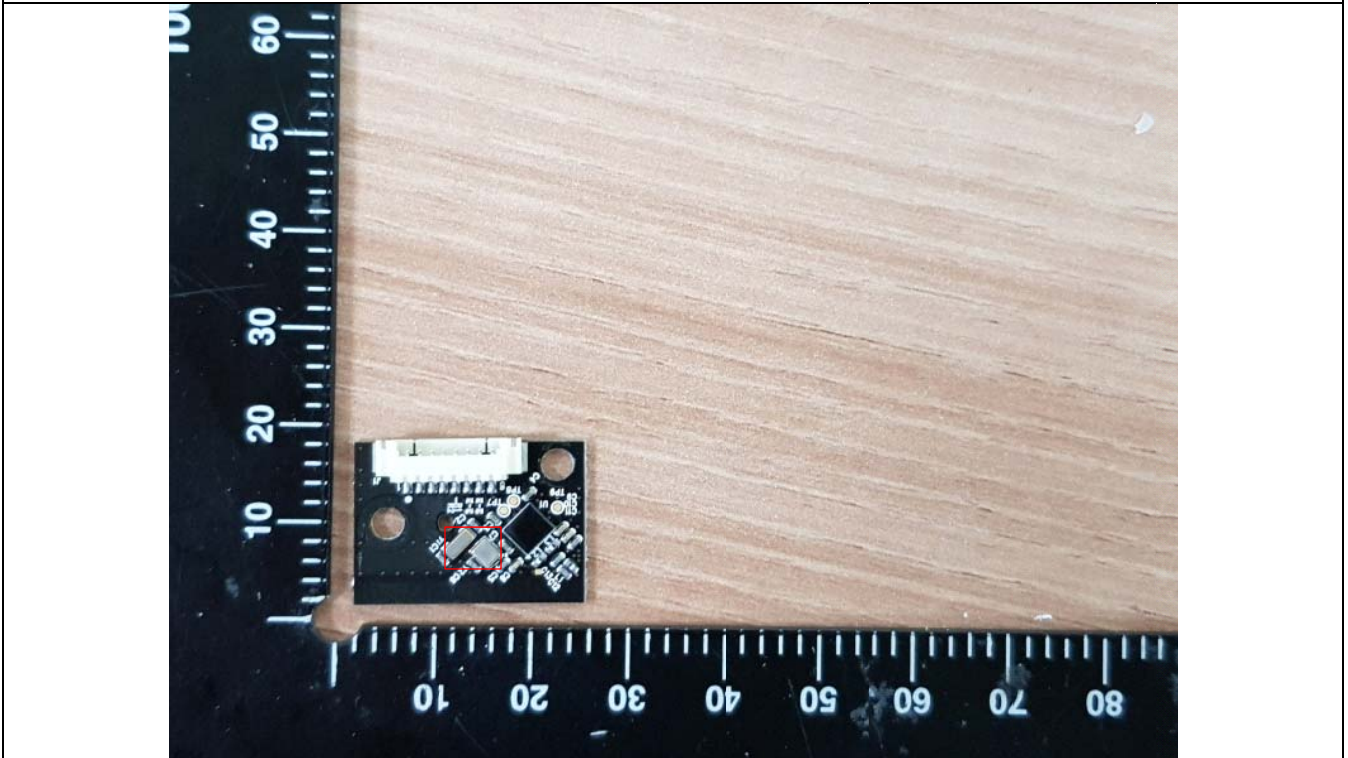
KEY Pad PCB - Front



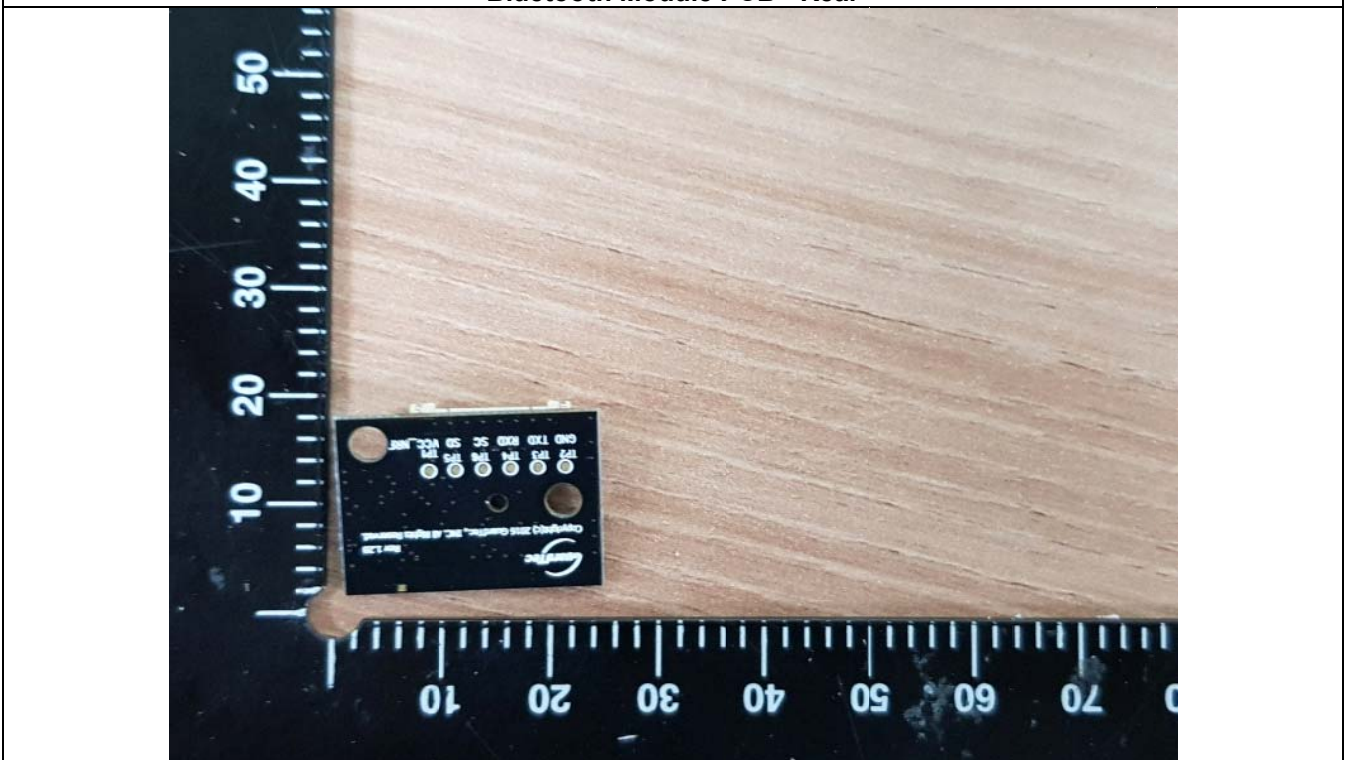
KEY Pad PCB - Rear



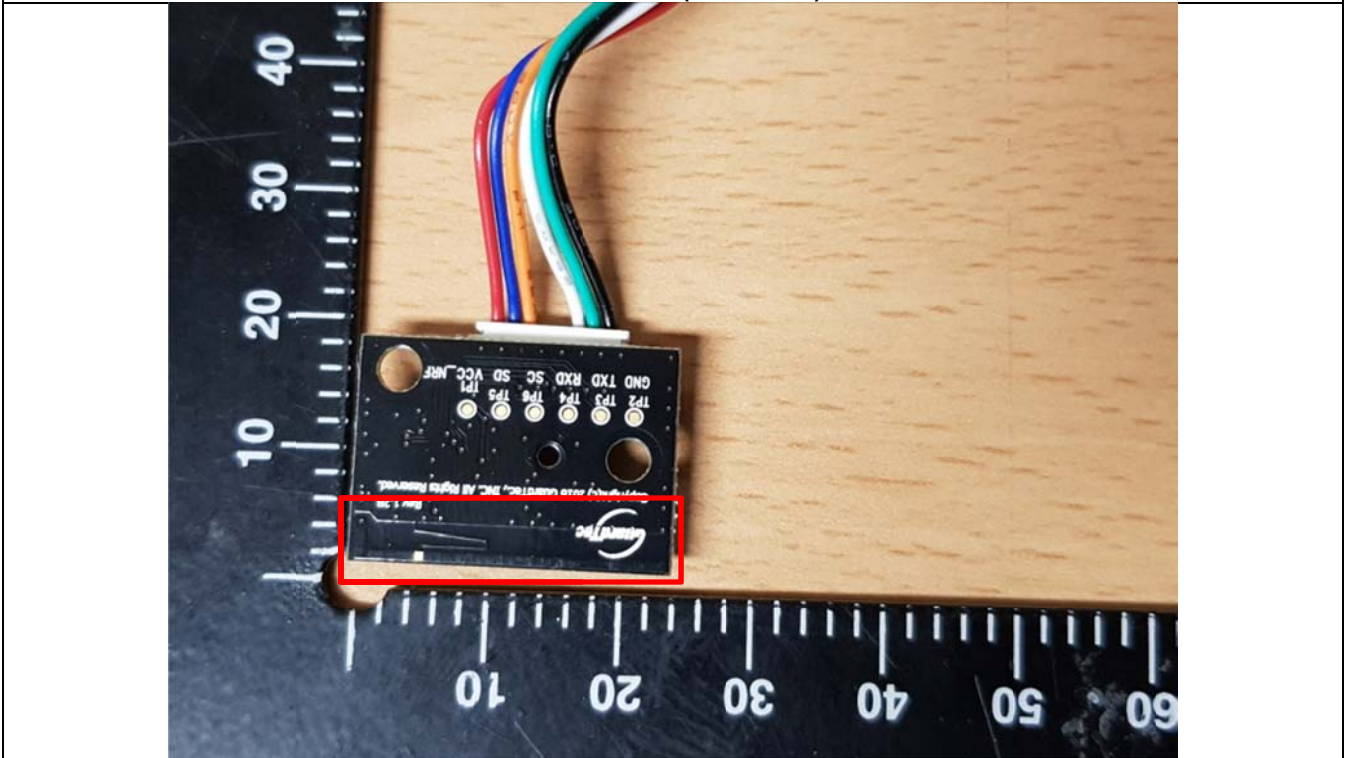
Bluetooth Module PCB - Front



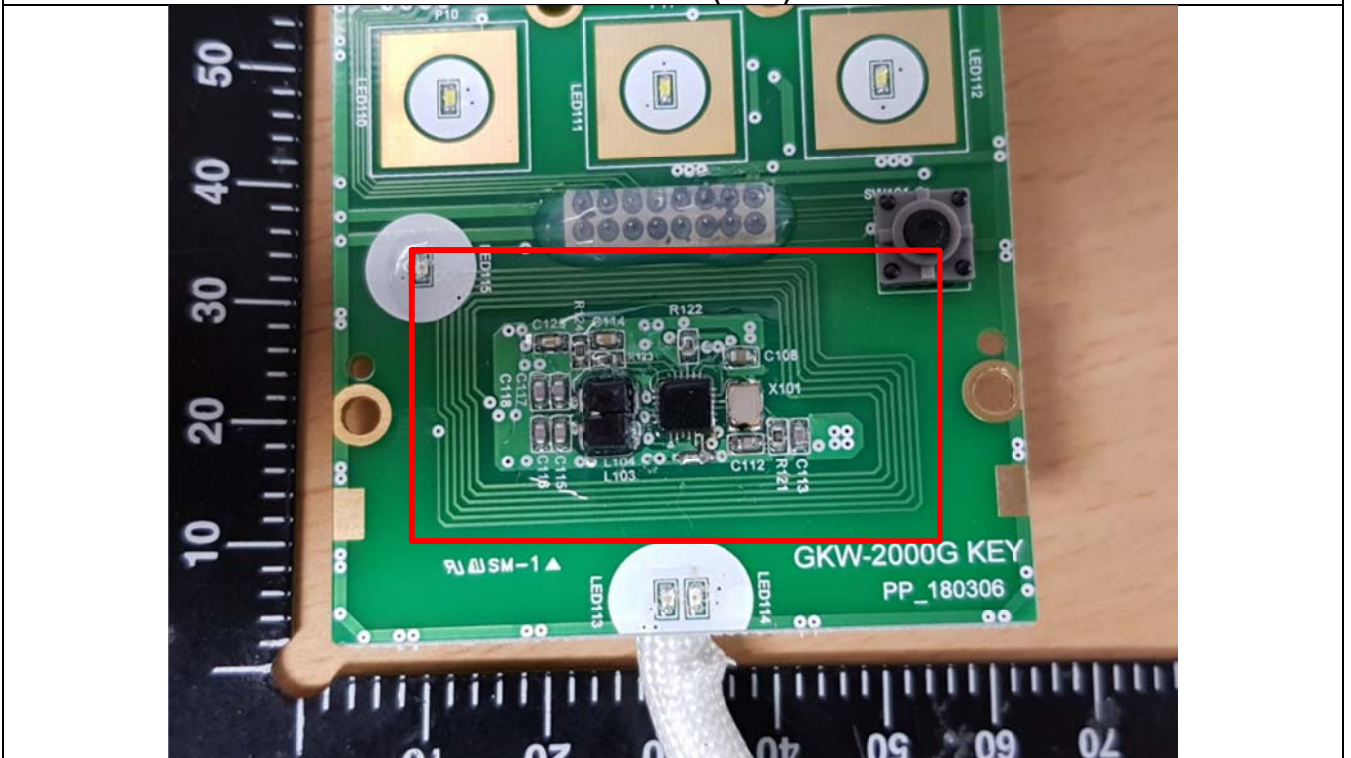
Bluetooth Module PCB - Rear



RF Antenna (Bluetooth)



RF Antenna (RFID)



RF Antenna (Z-wave)

