

FCC ID:2APR4-M2

This device complies with Part 15 of the FCC rules. Operation is subjected to the following two conditions: (1) this device may not cause harmful interference, and (2) this device must accept any interference received, including interference that may cause undesired operation.

Changes or modifications not expressly approved by the party responsible for compliance could void your authority to operate the equipment.

This device complies with Industry Canada’s licence-exempt RSSs. Operation is subject to the following two conditions:

(1) This device may not cause interference; and

(2) This device must accept any interference, including interference that may cause undesired operation of the device.

The distance between user and products should be no less than 20cm

Cet appareil est conforme aux CNR exemptes de licence d'Industrie Canada . Son fonctionnement est soumis aux deux conditions suivantes :

(1) Ce dispositif ne peut causer d'interférences ; et

(2) Ce dispositif doit accepter toute interférence , y compris les interférences qui peuvent causer un mauvais fonctionnement de l'appareil.

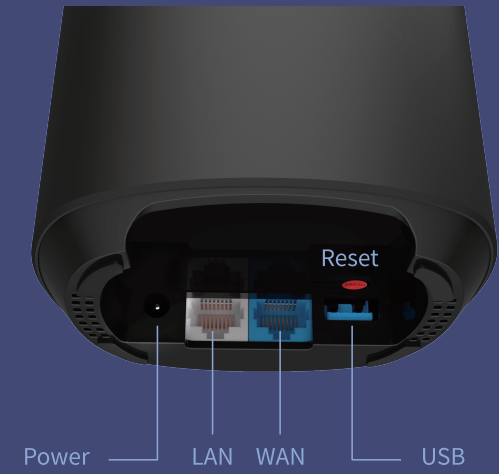
la distance entre l'utilisateur et les produits devraient être au moins 20 cm

This equipment has been tested and found to comply with the limits for a Class B digital device, pursuant to Part 15 of the FCC Rules. These limits are designed to provide reasonable protection against harmful interference in a residential installation. This equipment generates, uses and can radiate radio frequency energy and, if not installed and used in accordance with the instructions, may cause harmful interference to radio communications. However, there is no guarantee that interference will not occur in a particular installation. If this equipment does cause harmful interference to radio or television reception, which can be determined by turning the equipment off and on, the user is encouraged to try to correct the interference by one or more of the following measures:

- Reorient or relocate the receiving antenna.
- Increase the separation between the equipment and receiver.

Thank you for choosing the Mercku M2 router

◀ Set-up in 3 steps



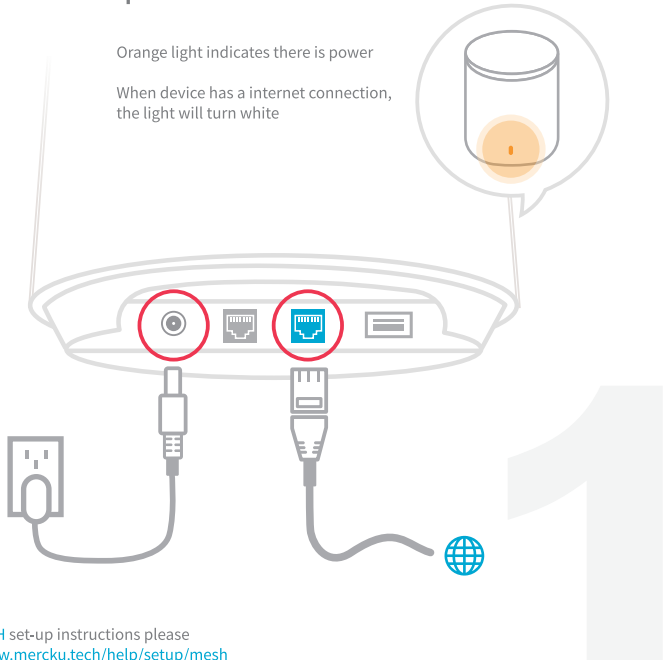
Port configuration



Set-up
Guide

Set-up Guide

1.Connect to the power and WAN cables



For MESH set-up instructions please visit www.mercku.tech/help/setup/mesh

2.Connect to Wi-Fi

Use mobile device or computer to search for and connect to [Mercku_XXXX](#) Wi-Fi network (no password required)

Mercku_xxxx		Connect
Wi-Fi_xxxx		
Wi-Fi_xxxx		

*[Mercku_XXXX](#) is a generated serial number – to find this, please locate at the bottom

2

3.Open browser or APP

Visit mywifi.mercku.tech through browser to complete setup

Or scan the [QR code](#) to download app to complete setup and manage the network

