

FCC ID: 2APR4-BEE

This device complies with Part 15 of the FCC rules. Operation is subjected to the following two conditions: (1) this device may not cause harmful interference, and (2) this device must accept any interference received, including interference that may cause undesired operation.

Changes or modifications not expressly approved by the party responsible for compliance could void your authority to operate the equipment.

The device for operation in the band 5150-5250 MHz is only for indoor use to reduce the potential for harmful interference to co-channel mobile satellite systems;

This device complies with Industry Canada's licence-exempt RSSs. Operation is subject to the following two conditions:

- (1) This device may not cause interference; and
- (2) This device must accept any interference, including interference that may cause undesired operation of the device.

The distance between user and products should be no less than 20cm

l'appareil pour l'opération dans la bande 5150-5250 est uniquement pour usage à l'intérieur réduire le risque de brouillage préjudiciable au canal commun de systèmes mobiles par satellite ;

Cet appareil est conforme aux CNR exemptes de licence d'Industrie Canada . Son fonctionnement est soumis aux deux conditions suivantes :

- (1) Ce dispositif ne peut causer d'interférences ; et
- (2) Ce dispositif doit accepter toute interférence , y compris les interférences qui peuvent causer un mauvais fonctionnement de l'appareil.

la distance entre l'utilisateur et les produits devraient être au moins 20cm

This equipment has been tested and found to comply with the limits for a Class B digital device, pursuant to Part 15 of the FCC Rules. These limits are designed to provide reasonable protection against harmful interference in a residential installation. This equipment generates, uses and can radiate radio frequency energy and, if not installed and used in accordance with the instructions, may cause harmful interference to radio communications. However, there is no guarantee that interference will not occur in a particular installation. If this equipment does cause harmful interference to radio or television reception, which can be determined by turning the equipment off and on, the user is encouraged to try to correct the interference by one or more of the following measures:

- Reorient or relocate the receiving antenna.
- Increase the separation between the equipment and receiver.
- Connect the equipment into an outlet on a circuit different from that to which the receiver is connected.
- Consult the dealer or an experienced radio/TV technician for help.

Thank you for choosing the Mercku M2 Bee mesh node

← Set-up in 3 steps



! You need a working M2 router to use the M2 Bee mesh node.

Need help setting up your M2 router?
Please scan this QR code:



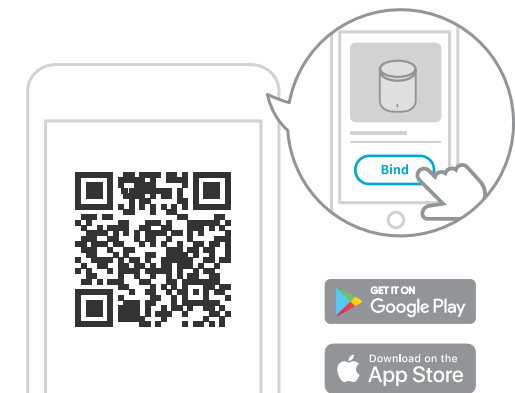
Or visit: www.mercku.tech/help

M2 Bee 
MESH Node | **Set-up
Guide**

Set-up Guide

1. Download the app

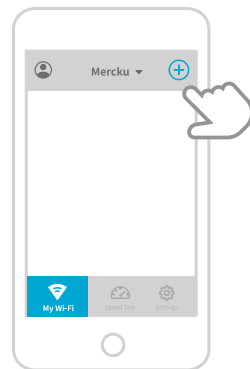
Please [download](#) the Mercku app, log into the app and bind it with the host router.



1

2. Add a Bee node

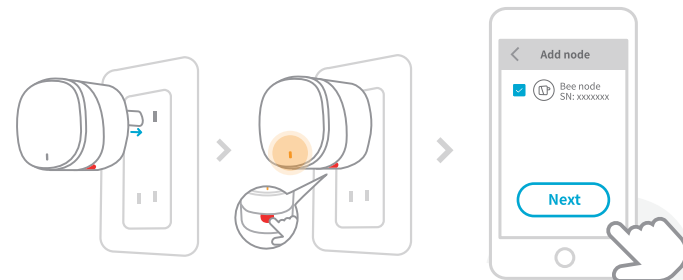
Open the Mercku app and access the “My Wi-Fi” section and click “+”.



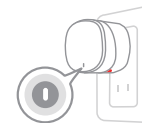
2

3. Plug in the Bee node

Plug the Bee node into the socket and click the reset button (red button). When the indicator light turns orange and blinks, click “Add node” on the app to finish the setup process.



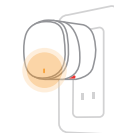
3



- After the mesh system is created successfully, the Bee node's indicator light will turn white and stop blinking.



- If the Bee node's indicator light blinks, it means that the signal is weak. Please move the Bee node closer to the other nodes (Bees or M2s) in the mesh network.



- If the Bee node fails to connect to the mesh system or there is no internet, the Bee's indicator light will be orange and steady. Please check the setup information on your app's interface or the network status of M2 host router.