



SGS-CSTC Standards Technical Services Co., Ltd. Wireless Lab

Report No.: SUCR240200003410

Rev: 01

Appendix A

Detailed System Check Results

1. System Check Results
System Performance Check 835 MHz
System Performance Check 1880 MHz

RF System Check Test Report

Measurement performed on May 05, 2024 at 11:26

Device Under Test

Manufacturer	Model	Dimensions [mm]	Speaker Position [mm]
		146.2 x 71.8 x 7.5	144.3

Hardware Setup

Probe Name	Probe Calibration Date	DAE Name	DAE Calibration Date
EF3DV3 - SN4051	June 02, 2023	DAE4 Sn1740	November 03, 2023

Communication Systems

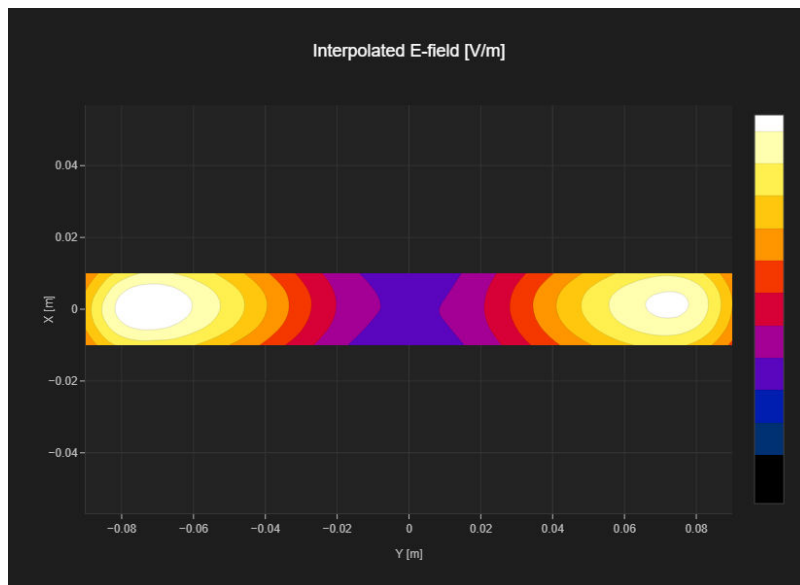
Band Name	Communication Systems Name	Channel	Frequency [MHz]
CD835	CW	50	835.0

Grid Settings

Extent X [mm]	Extent Y [mm]	Step X [mm]	Step Y [mm]	Distance [mm]
20.0	180.0	5.0	5.0	15.0

Results

Dipole Type	Dipole Serial Number	E _{max} [V/m]	Drift [dB]
CD835	1052	109	0.11



RF System Check Test Report

Measurement performed on May 05, 2024 at 11:02

Device Under Test

Manufacturer	Model	Dimensions [mm]	Speaker Position [mm]
		146.2 x 71.8 x 7.5	144.3

Hardware Setup

Probe Name	Probe Calibration Date	DAE Name	DAE Calibration Date
EF3DV3 - SN4051	June 02, 2023	DAE4 Sn1740	November 03, 2023

Communication Systems

Band Name	Communication Systems Name	Channel	Frequency [MHz]
CD1880	CW	50	1880.0

Grid Settings

Extent X [mm]	Extent Y [mm]	Step X [mm]	Step Y [mm]	Distance [mm]
20.0	90.0	5.0	5.0	15.0

Results

Dipole Type	Dipole Serial Number	E _{max} [V/m]	Drift [dB]
CD1880	1044	92.1	0.07

