

ShenZhen QiXinTongDa Technology Co.,Ltd.

Antenna Test Report

Project Name: S6808

Frequency Band:

BT+2.4GWIFI+5GWIFI

Device calibration time: 2024-06-01

Tester:HE GONG

Test time: 2024-07-11

ADDRESS: Room503-505,Building211,

Tairan IndustrialandTradePark,Chegongmiao,FutianDistrict,Shenzhen

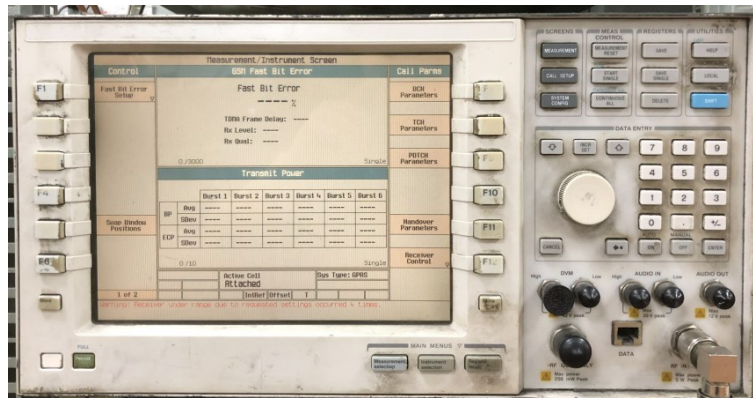
1.Test Project

	Test Project	Equipment
1. S Parameter	1. Return Loss(RL) 2. VSWR	Network Analyzer: Agilent 5071B
2. RF Test (2G+3G+4G)	1. power 2. level 3.TRP/TIS	Comprehensive Test: CMW500/8960 Test Environment: Anechoic Chamber
3. RF Test (5G)	1. power 2. level 3.TRP/TIS	Comprehensive Test: SP9500 Test Environment: Anechoic Chambe

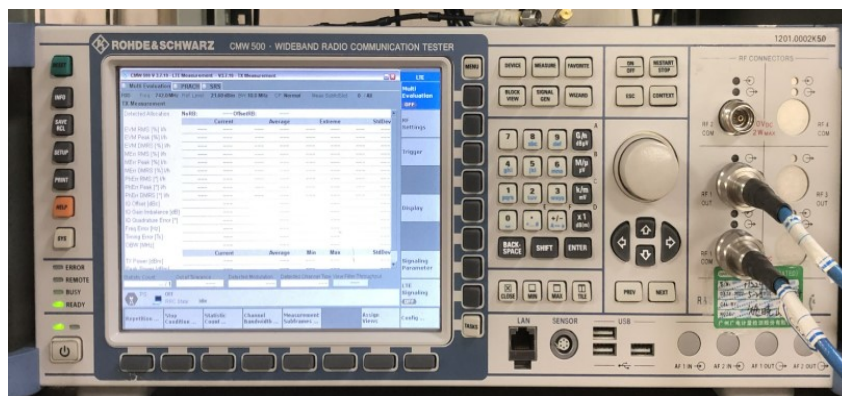
2. Test Equipment



Agilent 5071B (S Parameter (RL/VSWR) Test Equipment)



Agilent 8960 (2G/3G Test Equipment)

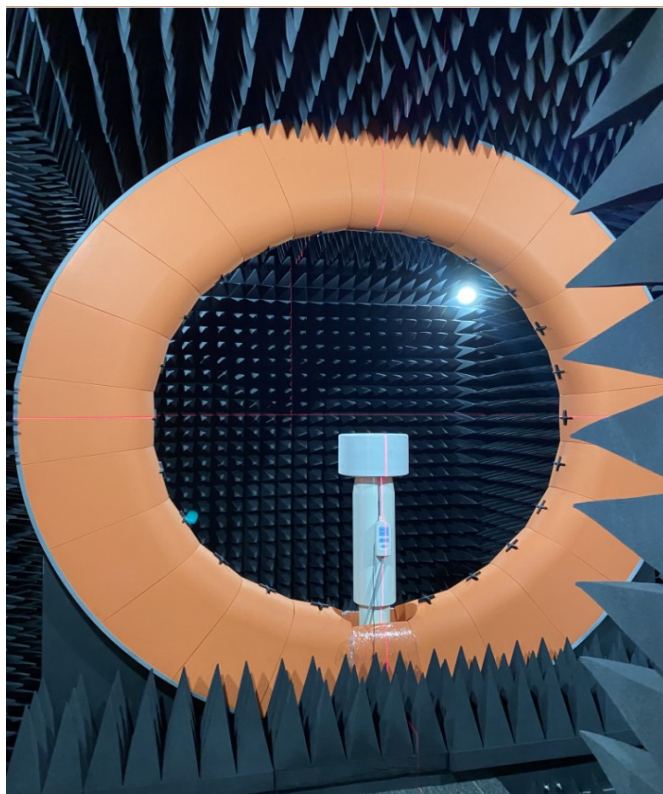


CMW 500 (2G/3G/4G Test Equipment)



SP9500-CTS 5G综合测试仪

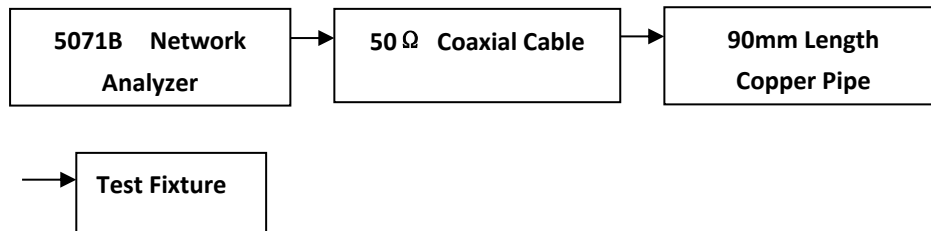
3. TestEnvironment



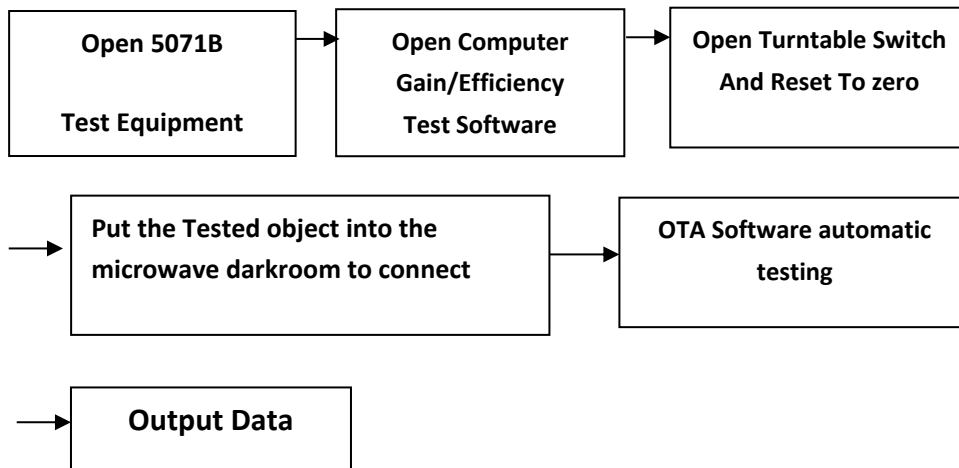
Microwave Anechoic Chamber

4. Test Steps

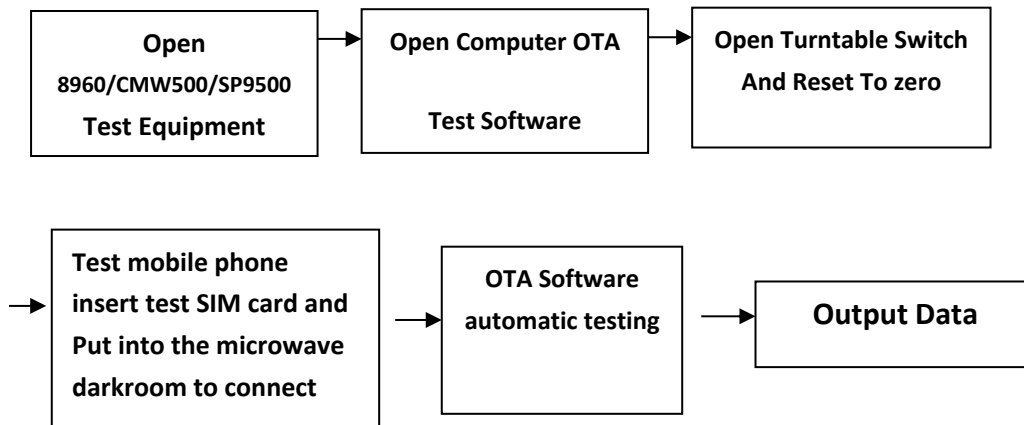
Passive VSWR/RL Test Steps:



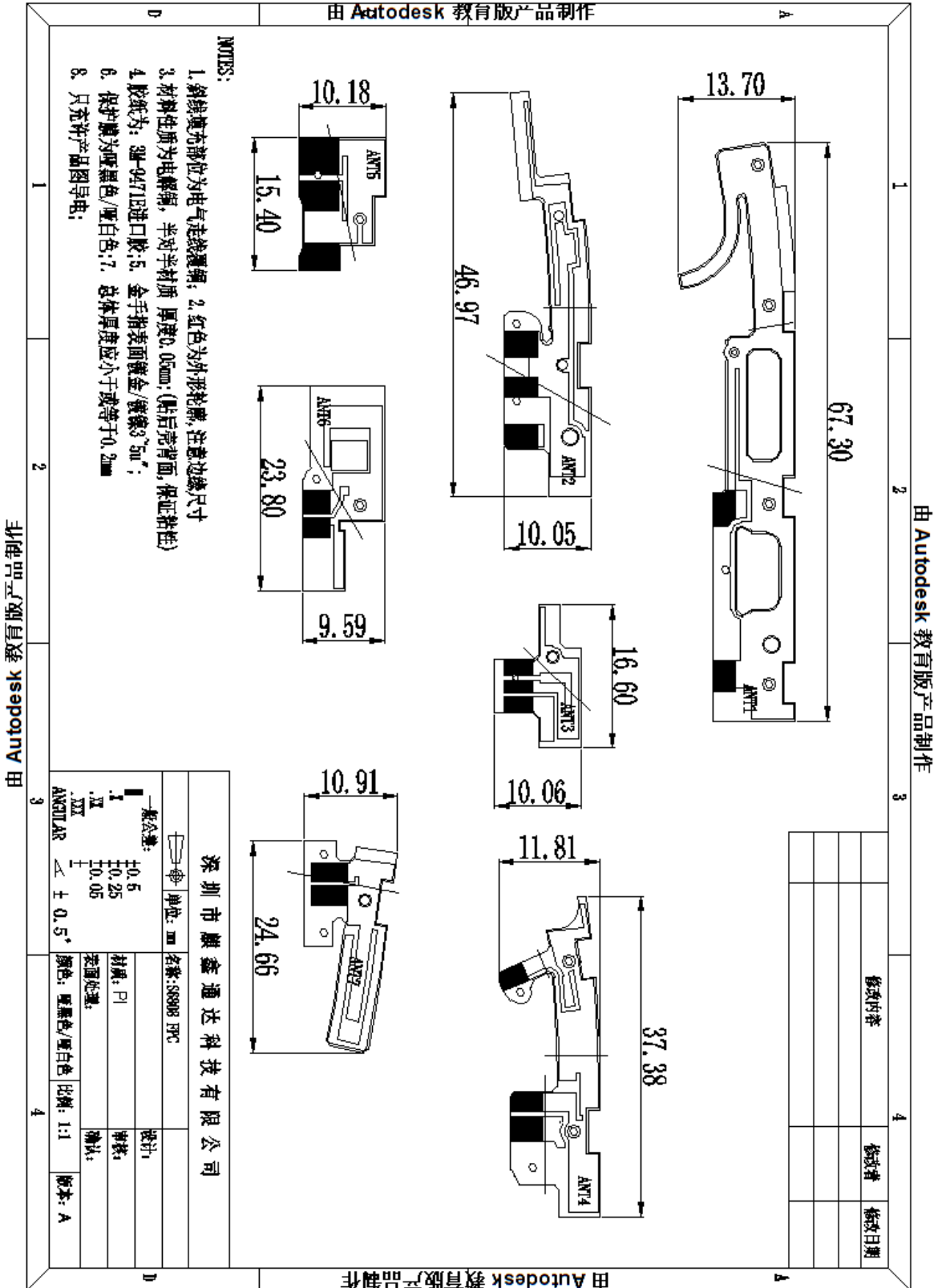
Gain/Efficiency Test Steps:



Active TRP/TIS Test Steps:



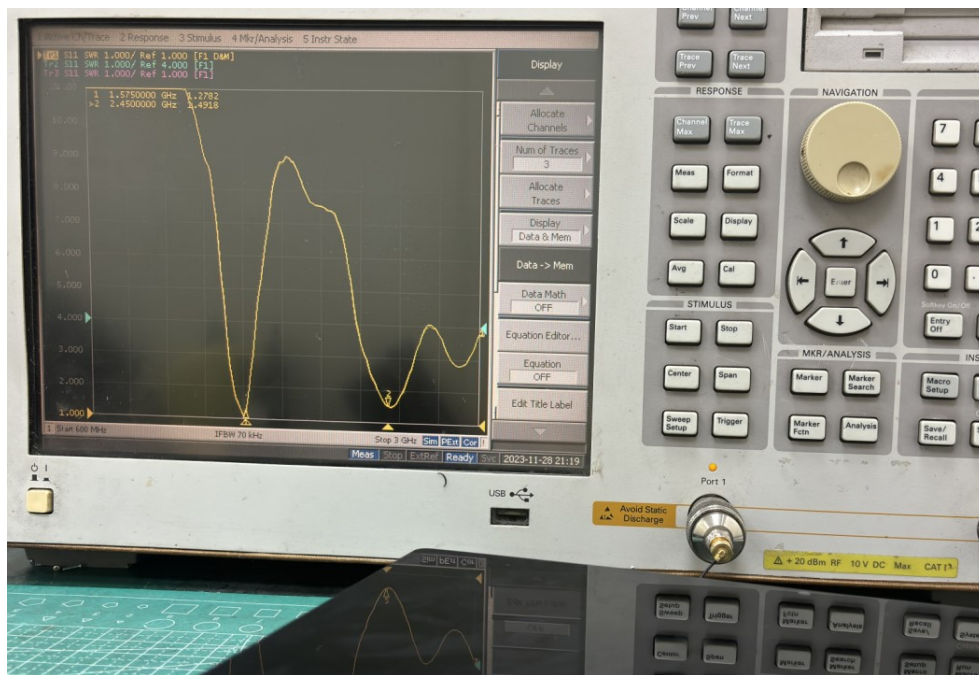
5. Antenna Dimensions



6.Introduction to Antenna Information

S6808	
Antenna type and frequency band	1、WIFI/BT ANTENNA (PIFA) : L1/2. 4GWIFI+5GWIFI/BT
Antenna materia	FPC

7.S11 SWR

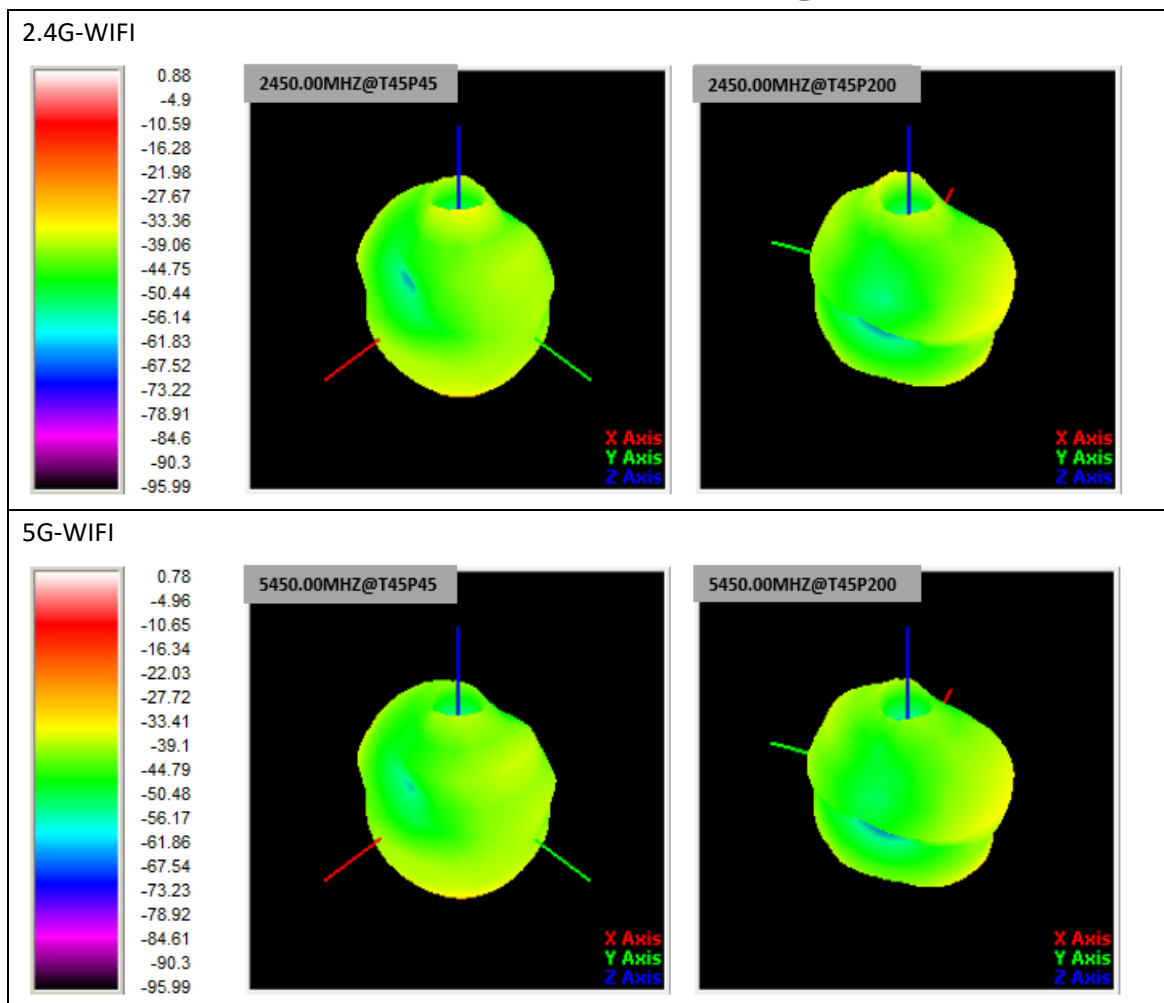


(2.4GWIFI/BT)

8. Antenna Gain

S6808-GAIN	
Frequency Band	Gain (dBi)
BT	0.88
2.4WIFI	0.88
5GWIFI	0.73

9.3D antenna orientation diagram



1.575G-GPS

