



MEIG

美格智能技术股份有限公司
MeiG Smart Technology Co., Ltd



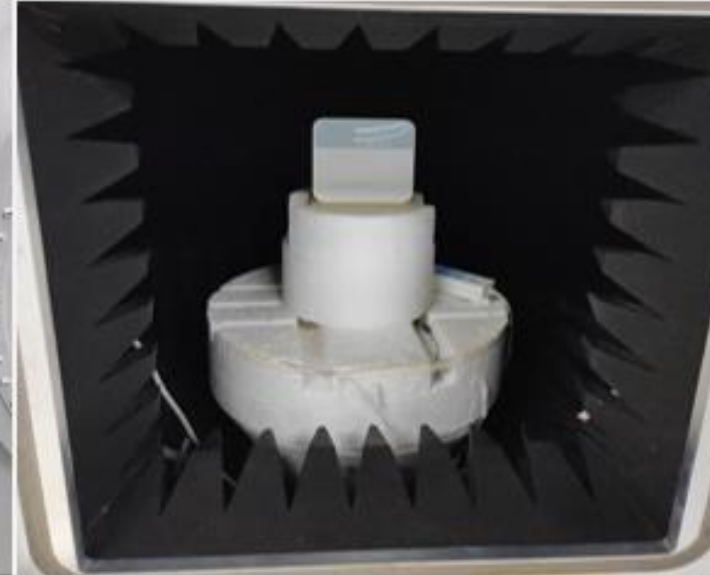
1. Specifications
2. Antenna Characteristics
3. Radiation Patterns
4. Contact



1-1.Specifications- Summary parameters

Impedance	50 Ω
Polarization	Linear
Radiation Pattern	Omni
Max. input power	5W
Planner Dimension	45*17mm
Casing	ABS
ANT Type	PCB ANT
ANT model	<u>WiFi 1</u> , <u>WiFi 2</u>
Temperature Range	-40°C to 85°C
ANT manufacturer	<u>MeiG Smart Technology Co., Ltd</u> <u>2nd Floor,Office Building,No.5 Lingxia</u> <u>Road,Fenghuang,Fuyong</u> <u>Street,Bao'an District,Shenzhen</u>
test lab	<u>MeiG Smart Technology Co., Ltd</u> <u>2nd Floor,Office Building,No.5 Lingxia</u> <u>Road,Fenghuang,Fuyong</u> <u>Street,Bao'an District,Shenzhen</u>

1-2. Test instrument and test photo



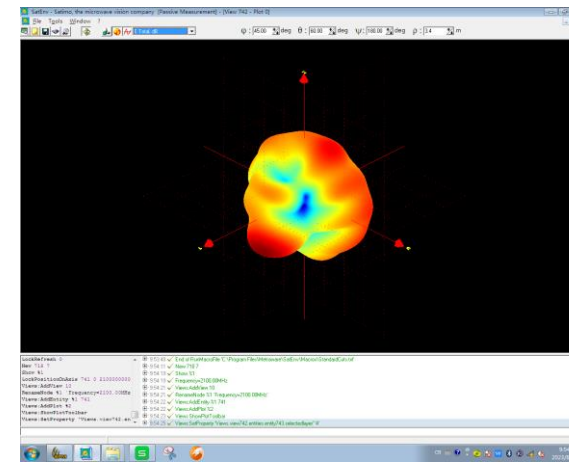
test photo

Test instrument

Test instrument calibration time:
2022.11.2

WiFi 0

Frequency/MHz	Efficiency (%)	Max gain (dBi)	Frequency/MHz	Efficiency (%)	Max gain (dBi)
2400	41%	0.9	5150	43%	1.32
2410	42%	1.00	5200	43%	1.47
2420	38%	0.91	5250	43%	1.34
2430	41%	0.87	5300	42%	1.36
2440	42%	0.86	5350	45%	1.49
2450	41%	0.64	5400	42%	1.38
2460	39%	0.77	5450	47%	1.47
2470	40%	0.78	5500	44%	1.48
2480	41%	0.8	5550	49%	1.38
2490	42%	0.72	5600	48%	1.50
2500	42%	0.84	5650	42%	1.43
			5700	39%	1.45
			5750	39%	1.45
			5800	41%	1.47
			5850	42%	1.44



WiFi 1

Frequency/MHz	Efficiency (%)	Max gain (dBi)	Frequency/MHz	Efficiency (%)	Max gain (dBi)
2400	41%	0.92	5150	43%	1.41
2410	42%	1.00	5200	43%	1.47
2420	38%	0.87	5250	43%	1.44
2430	41%	0.86	5300	42%	1.46
2440	42%	0.39	5350	45%	1.49
2450	41%	0.48	5400	42%	1.48
2460	39%	0.77	5450	47%	1.37
2470	40%	0.78	5500	44%	1.28
2480	41%	0.8	5550	49%	1.41
2490	42%	0.92	5600	48%	1.00
2500	42%	0.83	5650	42%	1.43
			5700	39%	1.45
			5750	39%	1.45
			5800	41%	1.47
			5850	42%	1.34

