



Appendix B

Detailed Test Results

1.WIFI
WIFI2.4GHz for Body

Test Laboratory: SGS-SAR Lab

OTConnect Tablet WiFi 802.11b 6CH Top side 0mm

DUT: OTConnect Tablet; Type: OTConnect Tablet; Serial: 0123456789ABCDEF

Communication System: UID 0, WI-FI(2.4GHz) (0); Frequency: 2437 MHz;Duty Cycle: 1:1

Medium: MSL2450;Medium parameters used: $f = 2437$ MHz; $\sigma = 1.919$ S/m; $\epsilon_r = 50.843$; $\rho = 1000$ kg/m³

Phantom section: Flat Section

DASY 5 Configuration:

- Probe: EX3DV4 - SN3962; ConvF(7.78, 7.78, 7.78); Calibrated: 2018/1/11;
- Sensor-Surface: 2mm (Mechanical Surface Detection), $z = -2.0, 31.0$
- Electronics: DAE4 Sn1374; Calibrated: 2017/8/31
- Phantom: ELI V5.0; Type: ELI; Serial: 1123
- DASY52 52.8.7(1137); SEMCAD X 14.6.10(7164)

Configuration/Body/Area Scan (6x11x1): Measurement grid: $dx=12$ mm, $dy=12$ mm

Maximum value of SAR (measured) = 0.0141 W/kg

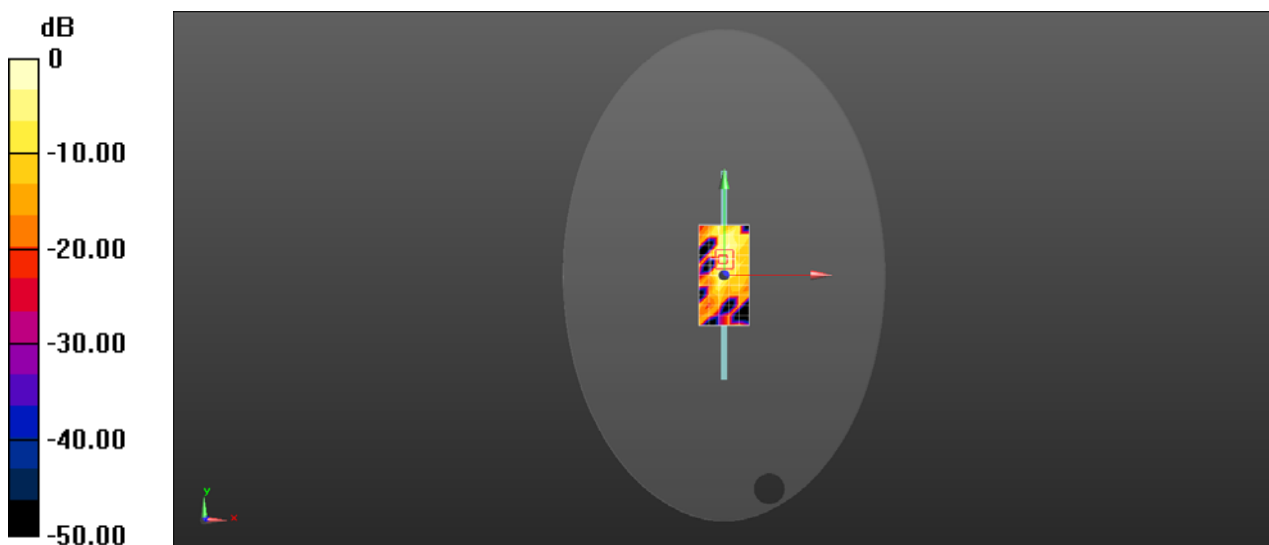
Configuration/Body/Zoom Scan (7x7x7)/Cube 0: Measurement grid: $dx=5$ mm, $dy=5$ mm, $dz=5$ mm

Reference Value = 1.603 V/m; Power Drift = 0.11 dB

Peak SAR (extrapolated) = 0.0330 W/kg

SAR(1 g) = 0.014 W/kg; SAR(10 g) = 0.00425 W/kg

Maximum value of SAR (measured) = 0.0279 W/kg



0 dB = 0.0279 W/kg = -15.54 dBW/kg