

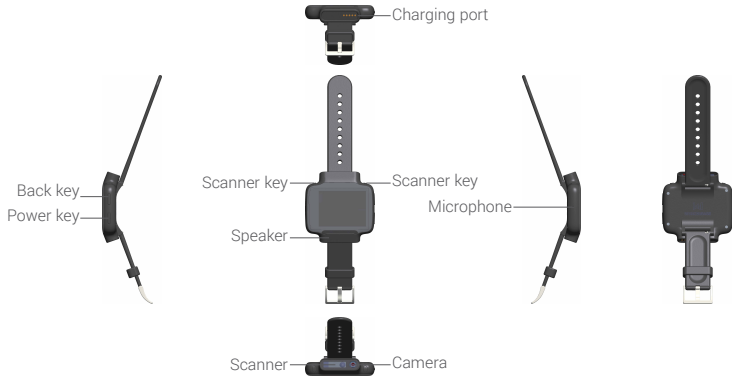
WORKERBASE Industrial Smartwatch WB-3301



Contents

| | |
|--|----------|
| Device overview | 2 |
| Buttons | 3 |
| What is in the box?..... | 4 |
| Charging your device..... | 5 |
| Turning the device on and off..... | 5 |
| Alert function..... | 6 |
| Wearing detection | 6 |
| How to login and operate the device | 7 |

Device overview



Buttons

| Buttons | Functions |
|--------------------|--|
| Power key | <ul style="list-style-type: none">• Press 0.5s to show power off menu.• Press 12s to restart.• Press to wake up the sleep mode of the watch. |
| Back key | <ul style="list-style-type: none">• Press to go back to previous screen. |
| Scanner key | <ul style="list-style-type: none">• Press to start scan. |

What is in the box?



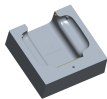
WB-3301 device



Quick Guide



OTG cable

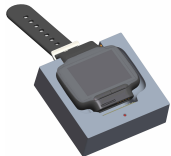


Charger



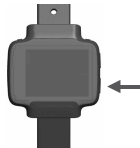
USB cable

Charging your device



1. Ensure that the pins in the charging dock are aligned with the pins of your device.
2. Connect the USB port with a computer or charger, to begin charging.
3. After your device is fully charged, unplug the USB port from the electric socket or computer.

Turning the device on and off



Long press the **Power** key to power on your device.

Long press the **Power** key and touch **Power off** to power off your device. Touch **Restart** to restart your device.

Alert function

The device vibrates to alert users in case of

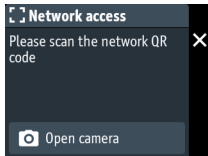
- Task alerts
- New text messages
- New voice messages
- Low battery
- Power on
- Power off

Wearing detection

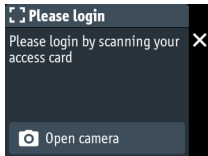
The device is equipped with a proximity sensor at the bottom that will detect if it is worn on the wrist or not.

The **WORKERBASE** software will lock the device when it is removed from the wrist and request to re-enter the PIN code.

How to login and operate the device

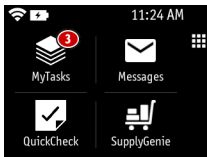


Step 1: To connect the device to your local network, please scan the network QR code generated in the "Settings" menu of your **WORKERBASE** installation (you need to enter the SSID and password of your network or type "CERT" as your SSID if you have already configured your WiFi settings). Just use the barcode scanner keys at the top of the device to scan the code with the internal barcode scanner. The device is now registered on the network.

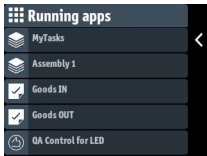


Step 2: To login to the **WORKERBASE** system, you need to scan your access QR-code generated in the User section of your installation. Now, you will be required to enter the 4-digit PIN code assigned to you.

If you press the X icon on the top right side of the screen or the top right button on the device, you can erase the current network settings and start connecting the device to a different network. The same is true if you have already signed in as a user and now want to sign in as different user.



Step 3: You have now logged in to the **WORKERBASE** system and the main menu will show all the apps assigned to you (please note that the screen shown below is just an example). You can start an app by touching its icon or by navigating the icon grid using the UP/DOWN buttons on your device. The “MyTasks” application on the top left corner will always indicate all the jobs assigned to you.



You can also toggle between the main menu and a list of all running apps by pressing to top right button of your device as indicated by the on-screen icon.