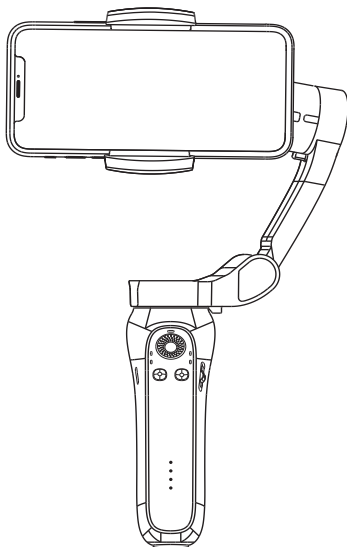


L7Bpro Foldable gimbal

User Manual



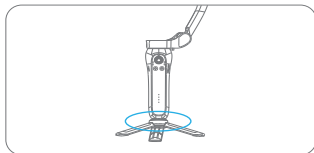
(Smartphone not included)

CONTENTS

Quick start, install the smart phone	2
Power on	3
Connect to the bluetooth when using native camera	3
Instructions for 4 modes	4
Get to know the gimbal	6
Others	8
Charging	9
Power off	10
About APP	10
Specification	12
Caution	13
Storage and maintenance	13

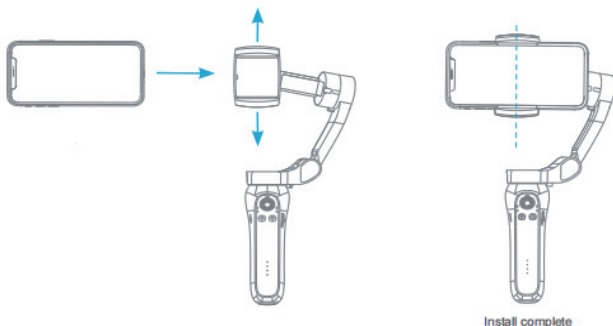
Quick start, install the smart phone

1. Install the tripod to gimbal



2. Remove the phone case before installation, keep the phone screen horizontal and the phone camera facing left.

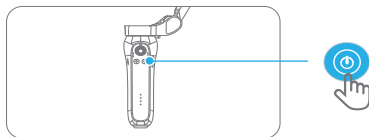
Pull the smart phone holder and put the phone into it, make sure the smart phone holder is in the middle of the smart-phone.



※ This product supports power on without smartphone, and allows to remove the phone while using, such as when taking a phone call

Power On

Press the power button for one second to power on

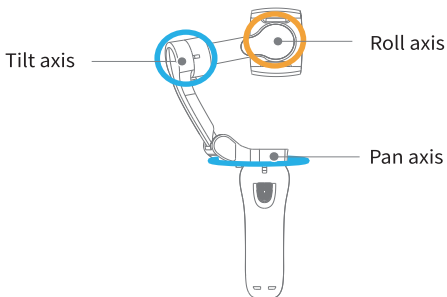


Connect to the bluetooth when using native camera

Power on the gimbal, open the bluetooth on the phone, go into smartphone bluetooth setting page, choose the device name “GP7-xx” to connect.

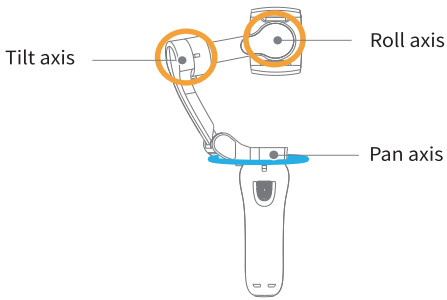
Instructions for 4 modes

All Follow(AF): The Roll axis is locked, the pan (left/right) and tilt(up/down) will follow the movement of handle.

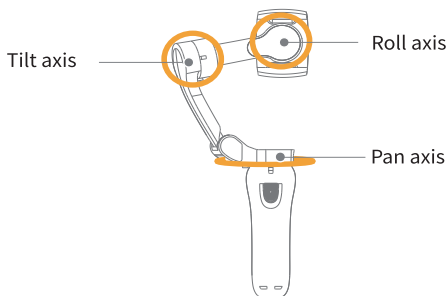


Half Follow(HF): Tilt & Roll are locked. Pan axis rotates (left/right) smoothly with the handle.

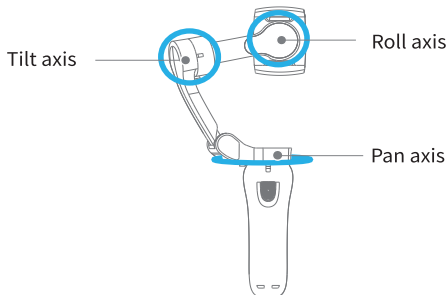
※ Default mode upon powering on



Lock Full(LF): Pan,Tilt, Roll axis are all locked. The camera remains still and stable, which means the camera cannot follow the movement of the handle.



First person view(FPV): Pan, Tilt, Roll axis follow the movement of the handle



Get to know the gimbal

FPV—First person view

Gimbal Pan, Tilt, Roll axis follow the movement of the handle

LF—Lock Full

Smartphone is fixed in one direction

Charging Port

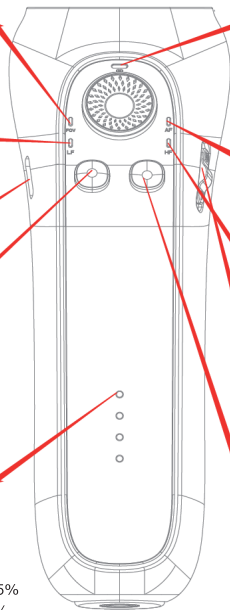
Charge for gimbal

Mode Button

Single press—
Switch four modes
Double press—
Smartphone back to center

Power Level Indicator

Four lights are on—100%
Three lights are on and the fourth light flashes—76%–99%
Three lights are on—50%–75%
Two lights are on—26%–49%
One light is on—0%–25%



Bluetooth Indicator

Slow Flashing—Bluetooth is not connected
Fast Flashing—Bluetooth is connecting
Light is On—Bluetooth is connected

AF—All Follow

Smartphone left/right and up/down follows the movement of the handle

HF—Half Follow

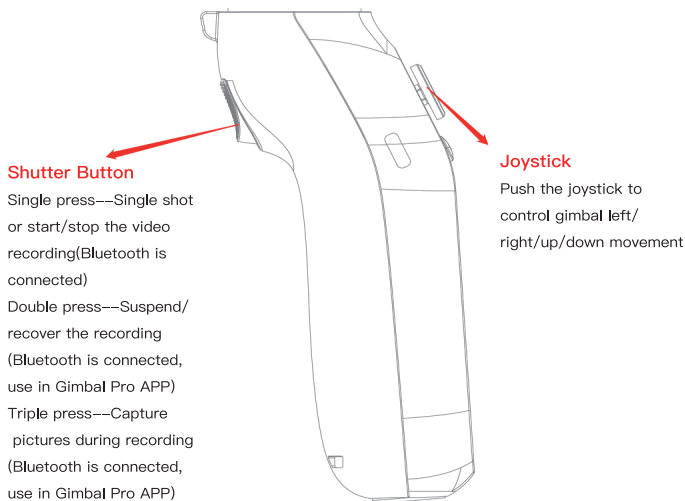
Smartphone left/right follows the movement of the handle

Zoom

Push the slider up/down to zoom in and out (Bluetooth is connected, use in Gimbal Pro APP)

Power Button

Single press—Switch horizontal & vertical mode/Restart gimbal when gimbal is stuck
Press one second—Power on/off
Double press—Switch photo/video mode (Bluetooth is connected, use in Gimbal Pro APP)
Triple press—Switch camera between front/rear (Bluetooth is connected, use in Gimbal Pro APP)



Others

Combine button

Press the shutter button and power button at the same time, reset the bluetooth name, to disconnect from previous phone, new phone can do quick connect

Work mode

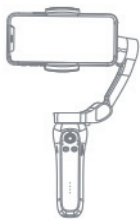
Works with both landscape and portrait modes

Underslung mode

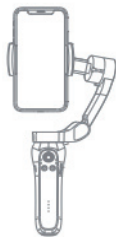
Hold the gimbal upside down to enter underslung mode, in order to capture images from low position

Side Grip mode

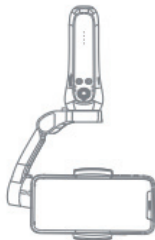
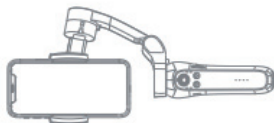
Rotate gimbal to the right or left by 90° to go from upright to side grip mode, works with both landscape and portrait modes



Work mode-landscape



Work mode-portrait

**Underlung mode****Side grip mode**

Charging

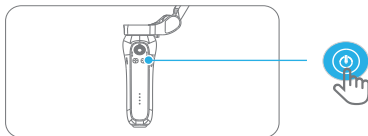
This product supports fast charging, suggest to use 5V/2A adapter to charge the gimbal

**charging****charging completed**

※ Support operation during charging

Power Off

Press the power button for one(1) second until the indicator lights are off;



※ Gimbal will return to folding position which will be convenient to quick fold it

About APP

This product supports native camera, can do basic stable shooting without APP

If you want to use more functions(such as zoom, panoramic, tracking and time lapse), need download and use the app

Download the Gimbal Pro APP

Search the QR code or search “Gimbal pro” on the Google play or App store



Support iOS and Android

※ Gimbal Pro require iOS 12.0 system and later or Android 8.0 system and later

Connect to Gimbal Pro APP

1. Go to setting page on smartphone
2. Go to Bluetooth setting, find and click the device name “GP7_xx”

Specification

Tile angle	160°
Roll angle	325°
Pan angle	340°
Net weight	362g
Payload	280g
Working temperature	0C°-40C°
Controllable Tile Angle	+30°/-30°
Controllable Roll Angle	+90°/-90°
Controllable Pan Angle	+240°/-100°
Working voltage	3.4~4.2V (Standard 3.7V)
Compatible smartphone range	Diagonal: ≤180mm Width: 55-90mm Thickness: ≤9.5mm
Working Current	150~3000mA (Standard 1500mA)
Gimbal Dimension	Unfolded: 260mm*130mm*88mm Folded: 152mm*110mm*46.6mm
Charging time	80mins (use 5V2A adapter)
Working time	4.5-5H
Face tracking	YES
APP	YES
Input voltage	5V
Input current	2A

Caution

1. Ensure the motor rotation is not blocked by external force during and after the stabilizer is powered on;
2. Please do not contact with sea water or corrosive liquid;
3. Please do not disassemble the stabilizer (except for the detachable accessories in the manual);
4. If the motor works continuously for a long time, the surface temperature of the motor may be too high.
5. It is strictly forbidden to drop or collide with the stabilizer, which may damage it and cause abnormal operation;

Storage and maintenance

1. Please keep this product away from children and pets;
2. It is forbidden to put the product near the heat source (furnace or heater, etc.) and in the car at hot weather;
3. Please store the product in a dry environment;
4. Do not overcharge or discharge the battery, otherwise the battery cell will be damaged;
5. Do not use the product in the environment with too high or too low temperature;

ISED Canada Statement:

This device contains licence-exempt transmitter(s)/receiver(s) that comply with Innovation, Science and Economic Development Canada's licence-exempt RSS(s).

Operation is subject to the following two conditions:

- (1) This device may not cause interference.
- (2) This device must accept any interference, including interference that may cause undesired operation of the device.

Radiation Exposure: This equipment complies with Canada radiation exposure limits set forth for an uncontrolled environment.

IC Radiation Exposure Statement

The device has been evaluated to meet general RF exposure requirement. The device can be used in portable exposure condition without restriction.

Déclaration d'ISED Canada:

Cet appareil contient des émetteurs/récepteurs exemptés de licence qui sont conformes aux RSS exemptés de licence d'innovation, sciences et développement économique Canada. Le fonctionnement est soumis aux deux conditions suivantes:

- (1) ce dispositif ne peut pas causer d'interférence.
- (2) ce dispositif doit accepter toute interférence, y compris l'interférence qui peut causer un fonctionnement indésirable du dispositif.

Exposition aux radiations: Cet équipement est conforme à la réglementation canadienne sur les radiations. limites d'exposition établies pour un environnement non contrôlé.

Déclaration d'exposition aux radiations IC

L'appareil a été évalué pour répondre aux exigences générales d'exposition aux RF. L'appareil peut être utilisé sans restriction dans des conditions d'exposition portables.

FCC Caution:

This device complies with part 15 of the FCC Rules. Operation is subject to the following two conditions: (1) This device may not cause harmful interference, and (2) this device must accept any interference received, including interference that may cause undesired operation.

Any Changes or modifications not expressly approved by the party responsible for compliance could void the user's authority to operate the equipment.

Note: This equipment has been tested and found to comply with the limits for a Class B digital device, pursuant to part 15 of the FCC Rules. These limits are designed to provide reasonable protection against harmful interference in a residential installation. This equipment generates uses and can radiate radio frequency energy and, if not installed and used in accordance with the instructions, may cause harmful interference to radio communications. However, there is no guarantee that interference will not occur in a particular installation. If this equipment does cause harmful interference to radio or television reception, which can be determined by turning the equipment off and on, the user is encouraged to try to correct the interference by one or more of the following measures:

- Reorient or relocate the receiving antenna.
- Increase the separation between the equipment and receiver.
- Connect the equipment into an outlet on a circuit different from that to which the receiver is connected.
- Consult the dealer or an experienced radio/TV technician for help.

The device has been evaluated to meet general RF exposure requirement. The device can be used in portable exposure condition without restriction.