





TEST REPORT

Report No. : CHTEW21040108 Report verification: 
Project No. : SHT2101077005EW
FCC ID : 2APPUD21000
Applicant's name : A Beep, LLC
Address : 710 W JEFFERSON ST, Joliet, IL, 60435, United States
Test item description : Digital Mobile Radio
Trade Mark : 
Model/Type reference : D2-1000U
Listed Model(s) : -
Standard : FCC CFR Title 47 Part 90
Date of receipt of test sample : Feb.20, 2021
Date of testing : Feb.20, 2021- Apr.20, 2021
Date of issue : Apr.21, 2021
Result : PASS

Compiled by
(Position - Printed name - Signature): File administrators Echo Wei



Supervised by
(Position - Printed name - Signature): Project Engineer Aaron Fang



Approved by
(Position - Printed name - Signature): RF Manager Hans Hu



Testing Laboratory Name : Shenzhen Huatongwei International Inspection Co., Ltd.
Address : 1/F, Bldg 3, Hongfa Hi-tech Industrial Park, Genyu Road,
Tianliao, Gongming, Shenzhen, China

Shenzhen Huatongwei International Inspection Co., Ltd. All rights reserved.

This publication may be reproduced in whole or in part for non-commercial purposes as long as the Shenzhen Huatongwei International Inspection Co., Ltd. is acknowledged as copyright owner and source of the material. Shenzhen Huatongwei International Inspection Co., Ltd. takes no responsibility for and will not assume liability for damages resulting from the reader's interpretation of the reproduced material due to its placement and context.

The test report merely correspond to the test sample.

Contents

| | | |
|----------|--|-----------|
| 1 | TEST STANDARDS AND REPORT VERSION | 3 |
| 1.1. | Test Standards | 3 |
| 1.2. | Report revised information | 3 |
| 2 | TEST DESCRIPTION | 4 |
| 3 | SUMMARY | 5 |
| 3.1 | Client Information | 5 |
| 3.2 | Product Description | 5 |
| 3.3 | Radio Specification Description | 5 |
| 3.4 | Testing Laboratory Information | 6 |
| 4 | TEST CONFIGURATION | 7 |
| 4.1 | Test frequency list | 7 |
| 4.2 | Operation mode | 7 |
| 4.3 | Support unit used in test configuration and system | 8 |
| 4.4 | Environmental conditions | 9 |
| 4.5 | Measurement uncertainty | 9 |
| 4.6 | Equipments Used during the Test | 10 |
| 5 | TEST CONDITIONS AND RESULTS | 11 |
| 5.1 | Conducted Carrier Output Power | 11 |
| 5.2 | 99% Occupied Bandwidth & 26dB Bandwidth | 12 |
| 5.3 | Emission Mask | 14 |
| 5.4 | Modulation Limit | 16 |
| 5.5 | Audio Frequency Response | 17 |
| 5.6 | Frequency stability VS Temperature | 19 |
| 5.7 | Frequency stability VS Voltage | 20 |
| 5.8 | Transmitter Frequency Behavior | 21 |
| 5.9 | Transmit Conducted Spurious Emission | 23 |
| 5.10 | Transmitter Radiated Spurious Emission | 24 |
| 6 | TEST SETUP PHOTOS | 37 |
| 7 | EXTERNAL AND INTERNAL PHOTOS | 39 |
| 7.1 | External Photos of the EUT | 39 |
| 7.2 | Internal Photos of the EUT | 42 |
| 8 | APPENDIX REPORT | 44 |

1 TEST STANDARDS AND REPORT VERSION

1.1. Test Standards

The tests were performed according to following standards:

[FCC Rules Part 2](#): Frequency allocations and radio treaty matters; General rules and regulations

[FCC Rules Part 90](#): Private land mobile radio services.

[ANSI C63.26-2015](#): American National Standard for Compliance Testing of Transmitters Used in Licensed Radio Services

[ANSI/TIA-603-E\(2016\)](#): Land Mobile FM or PM Communications Equipment and Performance Standards

[ANSI C63.4-2014](#): American National Standard for Methods of Measurement of Radio-Noise Emissions from Low-Voltage Electrical and Electronic Equipment in the Range of 9 kHz to 40 GHz

1.2. Report revised information

| Revised No. | Date of issued | Description |
|-------------|----------------|-------------|
| N/A | 2021-04-21 | Original |
| | | |
| | | |
| | | |
| | | |

2 TEST DESCRIPTION


| Test Item | Section in CFR 47 | Result | Test Engineer |
|---|----------------------------------|--------|---------------|
| Conducted Carrier Output Power | Part 90.205 Part 2.1046(a) | Pass | Zijian Li |
| 99% Occupied Bandwidth & 26dB bandwidth | Part 90.209 & 210 Part 2.1049 | Pass | Zijian Li |
| Emission Mask | Part 90.209 & 210 Part 2.1049 | Pass | Zijian Li |
| Modulation Limit | Part 2.1047(b) | Pass | Zijian Li |
| Audio Frequency Response | Part 2.1047(a) | Pass | Zijian Li |
| Frequency Stability VS Temperature | Part 90.213 Part 2.1055 | Pass | Zijian Li |
| Frequency Stability VS Voltage | Part 90.213 Part 2.1055 | Pass | Zijian Li |
| Transient Frequency Behavior | Part 90.214 | Pass | Zijian Li |
| Transmit Conducted Spurious Emission | Part 90.210 Part 2.1051 | Pass | Zijian Li |
| Transmit Radiated Spurious Emission | Part 90.210 Part 2.1053 | Pass | Zijian Li |

3 SUMMARY

3.1 Client Information

| | |
|---------------|--|
| Applicant: | A Beep, LLC |
| Address: | 710 W JEFFERSON ST, Joliet, IL, 60435, United States |
| Manufacturer: | A Beep, LLC |
| Address: | 710 W JEFFERSON ST, Joliet, IL, 60435, United States |
| Factory: | Shenzhen HQT Science & Technology Co., Ltd. |
| Address: | Room 1705 & 1706, 17th Floor, Weisheng Technology Building, No.9966, Shennan Road, Maling Community, Yuehai Sub-district, Nanshan District, Shenzhen City, China |

3.2 Product Description

| | |
|-----------------------|---|
| Name of EUT: | Digital Mobile Radio |
| Trade mark: |  |
| Model/Type reference: | D2-1000U |
| Listed model(s): | - |
| Power supply: | DC 13.6V |
| Hardware version: | D2-1000CPS |
| Software version: | D2-1000U |

3.3 Radio Specification Description

| | |
|--------------------------------|---|
| Support Frequency Range: | 400MHz~480MHz |
| Permitted frequency range: *1 | 400MHz~406MHz, 406.1MHz~480MHz |
| Rated Output Power: | <input checked="" type="checkbox"/> High Power: 45W <input checked="" type="checkbox"/> Low Power: 5W |
| Modulation Type: | Analog: FM |
| | Digital : 4FSK |
| Supported Digital Protocol: *2 | DMR |
| Channel Separation: | Analog: <input checked="" type="checkbox"/> 12.5kHz |
| | Digital : <input type="checkbox"/> 6.25kHz <input checked="" type="checkbox"/> 12.5kHz |
| Emission Designator: *3 | Analog: 11K0F3E |
| | Digital: 7K60FXW, 7K60FXD |
| Support data rate: | 9.6kbps |
| Antenna Type: | External |

Note:

- (1) ^{*1} Listed frequency range 400MHz~406MHz for Federal use Only.
- (2) ^{*2} The DMR standard specifies two-slot Time Division Multiplexing Technology to split the 12.5 kHz channel into two virtual 6.25kHz communication paths. This equates to an efficiency of one voice channel per 6.25 kHz of bandwidth even though it operates in channels of 12.5 kHz
- (3) ^{*3} According to FCC Part 2.202 requirements, the Necessary Bandwidth is calculated as follows:

- For FM Voice Modulation

Channel Spacing = 12.5 KHz, D = 2.5 KHz max, K = 1, M = 3 KHz

$B_n = 2M + 2DK = 2 \times 3 + 2 \times 2.5 \times 1 = 11 \text{ KHz}$

Emission designation: 11K0F3E

- For FM Data Modulation

Channel Spacing = 12.5 KHz, R = 9600 bps, D = 1944Hz, S = 4, K = 0.72

$B_n = (R/\log_2 S) + 2DK \approx 7.6 \text{ KHz}$

Emission designation: 7K60FXW, 7K60FXD

3.4 Testing Laboratory Information

| | | |
|----------------------|---|----------------------|
| Laboratory Name | Shenzhen Huatongwei International Inspection Co., Ltd. | |
| Laboratory Location | 1/F, Bldg 3, Hongfa Hi-tech Industrial Park, Genyu Road, Tianliao, Gongming, Shenzhen, China | |
| Connect information: | Tel: 86-755-26715499 E-mail: cs@szhtw.com.cn http://www.szhtw.com.cn | |
| Qualifications | Type | Accreditation Number |
| | FCC | 762235 |

4 TEST CONFIGURATION

4.1 Test frequency list

According to ANSI C63.26 section 5.1.2.1:

Measurements of transmitters shall be performed and, if required, reported for each frequency band in which the EUT can be operated with the device transmitting at the number of frequencies in each band specified in below table

| Frequency range over which EUT operates | Number of frequencies | Location in frequency range of operation |
|---|-----------------------|--|
| 1 MHz or less | 1 | Middle |
| 1 MHz to 10 MHz | 2 | 1 near top and 1 near bottom |
| More than 10 MHz | 3 | 1 near top, 1 near middle, and 1 near bottom |

| Frequency Bands (MHz) | Test Frequency (MHz) |
|-----------------------|---------------------------|
| 400MHz ~ 406MHz | CH _L 400.0125 |
| | CH _{M1} 405.9875 |
| 406.1MHz ~480MHz | CH _{M2} 406.1125 |
| | CH _{M3} 443.0125 |
| | CH _H 479.9875 |

4.2 Operation mode

| Test Mode | Transmitting | Receiving | Digital | Analog | Power Level | |
|-----------|--------------|-----------|---------|---------|-------------|-----|
| | | | 12.5kHz | 12.5kHz | High | Low |
| TX-DNH | ■ | | ■ | | ■ | |
| TX-DNL | ■ | | ■ | | | ■ |
| TX-ANH | ■ | | | ■ | ■ | |
| TX-ANL | ■ | | | ■ | | ■ |

Note:

■: is operation mode.

| Modulation Type | Description |
|-----------------|---|
| UM | Un-modulation |
| AM2 | Apply a 1000 Hz tone and adjust the audio frequency generator to produce 20% of the rated system deviation. |
| AM6 | Apply a 1000 Hz modulating signal to the transmitter from the audio frequency generator, and adjust the level to obtain 60% of full rated system deviation, then increase the level from the audio generator by 20 dB |
| AM5 | Modulate the transmitter with a 2500 Hz sine wave at an input level 16 dB greater than that necessary to produce 50% of rated system deviation. |
| DM | A 511 bit binary pseudo-random bit sequence based on ITU-T Rec. O.153 |

Pre-scan above all test mode, found below test mode which it was worse case mode, so only show the test data for worse case mode on the test report.

| Test item | Modulation Type | Test mode (Worse case mode) |
|---|-----------------|--------------------------------|
| Conducted Output Power | UM | TX-DNH, TX-DNL, TX-ANH, TX-ANL |
| 99% Occupied Bandwidth & 26dB bandwidth | AM6, DM | TX-DNH, TX-DNL, TX-ANH, TX-ANL |
| Emission Mask | AM5, DM | TX-DNH, TX-DNL, TX-ANH, TX-ANL |
| Modulation Limit | AM6 | TX-ANH |
| Audio Frequency Response | AM2 | TX-ANH |
| Frequency Stability VS Temperature | UM | TX-DNH, TX-DNL, TX-ANH, TX-ANL |
| Frequency Stability VS Voltage | UM | TX-DNH, TX-DNL, TX-ANH, TX-ANL |
| Transient Frequency Behavior | UM | TX-DNH, TX-ANH |
| Transmit Conducted Spurious Emission | AM5, DM | TX-DNH, TX-ANH |
| Transmit Radiated Spurious Emission | AM5, DM | TX-DNH, TX-ANH |

4.3 Support unit used in test configuration and system

The EUT has been associated with peripherals and configuration operated in a manner tended to maximize its emission characteristics in a typical application.

The following peripheral devices and interface cables were connected during the measurement:

| Whether support unit is used? | | | | | |
|-------------------------------|------------|------------|-----------|--------|------------|
| ✓ No | | | | | |
| Item | Equipement | Trade Name | Model No. | FCC ID | Power cord |
| 1 | | | | | |
| 2 | | | | | |

4.4 Environmental conditions

| Type | Requirement | Actual |
|--------------------|---------------------------------|-----------|
| Temperature: | 15~35°C | 25°C |
| Relative Humidity: | 25~75% | 50% |
| Air Pressure: | 860~1060mbar | 1000mbar |
| Voltage: | Normal voltage (V_N): | DC 13.60V |
| | Extreme high voltage (V_H): | DC 15.64V |
| | Extreme high voltage (V_L): | DC 11.56V |

4.5 Measurement uncertainty

| Test Items | Measurement Uncertainty |
|--|--------------------------------------|
| Frequency stability & Occupied Bandwidth | 15Hz for <1GHz 70Hz for >1GHz |
| Conducted Output Power | 0.51dB |
| ERP / EIRP / RSE | 2.66dB for <1GHz 3.44dB for >1GHz |
| Conducted Emission 9KHz-30MHz | 3.02dB |
| Radiated Emission 30~1000MHz | 4.90dB |
| Radiated Emission 1~18GHz | 4.96dB |
| FM deviation | 25 Hz |
| Audio level | 0.62 dB |
| Low Pass Filter Response | 0.76 dB |
| Modulation Limiting | 0.42 % |
| Transient Frequency Behavior | 6.8 % |

This uncertainty represents an expanded uncertainty expressed at approximately the 95% confidence level using a coverage factor of $k=1.96$.

4.6 Equipments Used during the Test

| ● TS8613 Test system | | | | | | | |
|------------------------------|---------------------------------------|--------------------|---------------|-------------------|-------------|---------------------------|---------------------------|
| Used | Test Equipment | Manufacturer | Equipment No. | Model No. | Serial No. | Last Cal. Date (YY-MM-DD) | Next Cal. Date (YY-MM-DD) |
| ○ | Spectrum Analyzer | Agilent | HTWE0286 | N9020A | MY50510187 | 2020/10/19 | 2021/10/18 |
| ● | Signal & Spectrum Analyzer | R&S | HTWE0262 | FSW26 | 103440 | 2020/10/19 | 2021/10/18 |
| ● | RF Communication Test Set | HP | HTWE0038 | 8920A | 3813A10206 | 2020/10/20 | 2021/10/19 |
| ● | Digital intercom communication tester | Aeroflex | HTWE0255 | 3920B | 1001682041 | 2020/10/20 | 2021/10/19 |
| ● | Signal Generator | R&S | HTWE0191 | SML02 | 100507 | 2020/10/20 | 2021/10/19 |
| ● | Signal Generator | R&S | HTWE0337 | SMC100A | 107268 | 2020/10/20 | 2021/10/19 |
| ● | RF Control Unit | Tonscend | HTWE0294 | JS0806-2 | N/A | N/A | N/A |
| ○ | Filter-VHF | Microwave | HTWE0309 | N26460M1 | 498702 | N/A | N/A |
| ● | Filter-UHF | Microwave | HTWE0311 | N25155M2 | 498704 | N/A | N/A |
| ○ | Power Divider | Microwave | HTWE0043 | OPD1040-N-4 | N/A | 2020/05/24 | 2021/05/23 |
| ○ | Attenuator | JFW | HTWE0292 | 50FH-030-100 | N/A | 2020/05/18 | 2021/05/17 |
| ○ | Attenuator | JFW | HTWE0293 | 50-A-MFN-20 | 0322 | 2020/05/18 | 2021/05/17 |
| ● | Test software | HTW | N/A | Radio ATE | N/A | N/A | N/A |
| ● Auxiliary Equipment | | | | | | | |
| Used | Test Equipment | Manufacturer | Equipment No. | Model No. | Serial No. | Last Cal. Date (YY-MM-DD) | Next Cal. Date (YY-MM-DD) |
| ● | Climate chamber | ESPEC | HTWE0254 | GPL-2 | N/A | 2020/10/15 | 2021/10/14 |
| ● | DC Power Supply | Gwinstek | HTWE0274 | SPS-2415 | GER835793 | N/A | N/A |
| ● Radiated Spurious Emission | | | | | | | |
| Used | Test Equipment | Manufacturer | Equipment No. | Model No. | Serial No. | Last Cal. Date (YY-MM-DD) | Next Cal. Date (YY-MM-DD) |
| ● | Semi-Anechoic Chamber | Albatross projects | HTWE0122 | SAC-3m-01 | N/A | 2018/09/27 | 2021/09/26 |
| ● | Spectrum Analyzer | R&S | HTWE0098 | FSP40 | 100597 | 2020/10/20 | 2021/10/19 |
| ● | Loop Antenna | R&S | HTWE0170 | HFH2-Z2 | 100020 | 2021/04/06 | 2022/04/05 |
| ● | Broadband Horn Antenna | SCHWARZBECK | HTWE0103 | BBHA9170 | BBHA9170472 | 2018/10/11 | 2021/10/11 |
| ● | Ultra-Broadband Antenna | SCHWARZBECK | HTWE0123 | VULB9163 | 538 | 2021/04/06 | 2022/04/05 |
| ● | Horn Antenna | SCHWARZBECK | HTWE0126 | 9120D | 1011 | 2020/04/01 | 2023/03/31 |
| ● | Pre-amplifier | CD | HTWE0071 | PAP-0102 | 12004 | 2020/11/13 | 2021/11/12 |
| ● | Broadband Preamplifier | SCHWARZBECK | HTWE0201 | BBV 9718 | 9718-248 | 2020/05/23 | 2021/05/22 |
| ● | RF Connection Cable | HUBER+SUHNER | HTWE0120-01 | 6m 18GHz S Serisa | N/A | 2020/05/10 | 2021/05/09 |
| ● | RF Connection Cable | HUBER+SUHNER | HTWE0120-02 | 6m 3GHz RG Serisa | N/A | 2020/05/10 | 2021/05/09 |
| ● | RF Connection Cable | HUBER+SUHNER | HTWE0120-03 | 6m 3GHz RG Serisa | N/A | 2020/05/10 | 2021/05/09 |
| ● | RF Connection Cable | HUBER+SUHNER | HTWE0120-04 | 6m 3GHz RG Serisa | N/A | 2020/05/10 | 2021/05/09 |
| ● | RF Connection Cable | HUBER+SUHNER | HTWE0121-01 | 6m 18GHz S Serisa | N/A | 2020/05/10 | 2021/05/09 |
| ● | EMI Test Software | Audix | N/A | E3 | N/A | N/A | N/A |

5 TEST CONDITIONS AND RESULTS

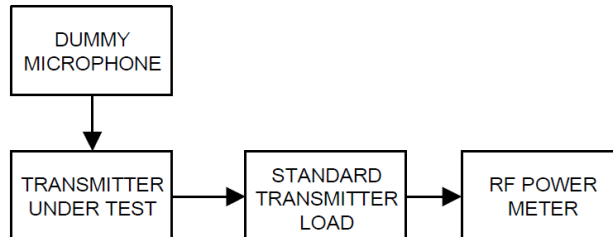
5.1 Conducted Carrier Output Power

LIMIT

FCC Part 90.205, FCC Part 2.1046

Applicants for licenses must request and use no more power than the actual power necessary for satisfactory operation.

TEST CONFIGURATION



TEST PROCEDURE

- (1) Connect the equipment as illustrated
- (2) Correct for all losses in the RF path
- (3) Measure the transmitter output power
- (4) If the power output is adjustable, measurements shall be made for the highest and lowest power levels.

TEST MODE

Please reference to the section 4.2

TEST RESULTS

☒ **Passed** ☐ **Not Applicable**

TEST DATA:

Please refer to appendix A on the section 8 appendix report

5.2 99% Occupied Bandwidth & 26dB Bandwidth

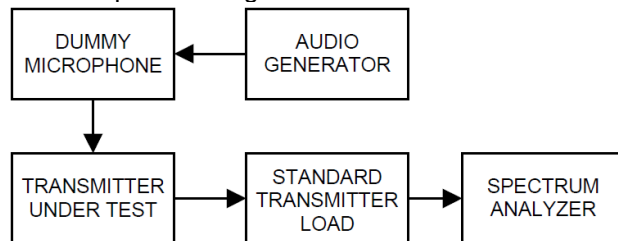
LIMIT

FCC Part 90.209, FCC Part 2.1049

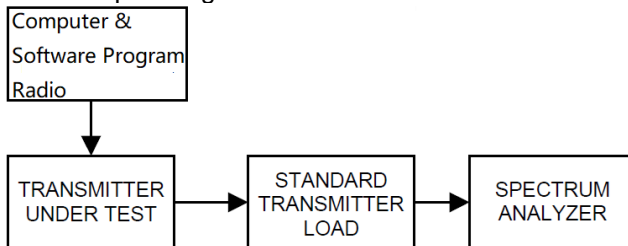
| Frequency band (MHz) | Channel spacing (kHz) | Authorized bandwidth (kHz) |
|---------------------------------------|-----------------------|----------------------------|
| Below 25 ² | | |
| 25-50 | 20 | 20 |
| 72-76 | 20 | 20 |
| 150-174 | 17.5 | ¹ 320/11.25/6 |
| 216-220 ⁵ | 6.25 | 20/11.25/6 |
| 220-222 | 5 | 4 |
| 406-512 ² | ¹ 6.25 | ¹³⁶ 20/11.25/6 |
| 806-809/851-854 | 12.5 | 20 |
| 809-824/854-869 | 25 | ⁶ 20 |
| 896-901/935-940 | 12.5 | 13.6 |
| 902-928 ⁴ | | |
| 929-930 | 25 | 20 |
| 1427-1432 ⁵ | 12.5 | 12.5 |
| ³ 2450-2483.5 ² | | |
| Above 2500 ² | | |

TEST CONFIGURATION

Test setup for Analog:



Test setup for Digital:



TEST PROCEDURE

- (1) Connect the equipment as illustrated
- (2) Spectrum set as follow:
 Centre frequency = the nominal EUT channel center frequency,
 The frequency span for the spectrum analyzer shall be set wide enough to capture all modulation products including the emission skirts (typically a span of $1.5 \times \text{OBW}$ is sufficient)
 RBW = 1% to 5% of the anticipated OBW, VBW $\geq 3 \times \text{RBW}$, Sweep = auto,
 Detector function = peak, Trace = max hold
- (3) Set 99% Occupied Bandwidth and 26dB Bandwidth
- (4) Measure and record the results in the test report.

TEST MODE

Please reference to the section 4.2

TEST RESULTS

☒ **Passed** ☐ **Not Applicable**

TEST DATA:

Please refer to appendix B on the section 8 appendix report

5.3 Emission Mask

LIMIT

FCC Part 90.210, FCC Part 2.1049

| Frequency band (MHz) | Mask for equipment with audio low pass filter | Mask for equipment without audio low pass filter |
|--------------------------------|---|--|
| Below 25 ¹ | A or B | A or C |
| 25-50 | B | C |
| 72-76 | B | C |
| 150-174 ² | B, D, or E | C, D or E |
| 150 paging only | B | C |
| 220-222 | F | F |
| 421-512 ^{2 5} | B, D, or E | C, D, or E |
| 450 paging only | B | G |
| 806-809/851-854 ⁶ | B | H |
| 809-824/854-869 ^{3 5} | B | G |
| 896-901/935-940 | I | J |
| 902-928 | K | K |
| 929-930 | B | G |
| 4940-4990 MHz | L or M | L or M |
| 5850-5925 ⁴ | | |
| All other bands | B | C |

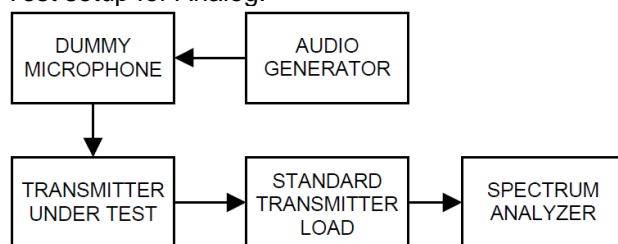
Emission Mask D — 12.5 kHz channel bandwidth equipment

For transmitters designed to operate with a 12.5 kHz channel bandwidth, any emission must be attenuated below the power (P) of the highest emission contained within the authorized bandwidth as follows:

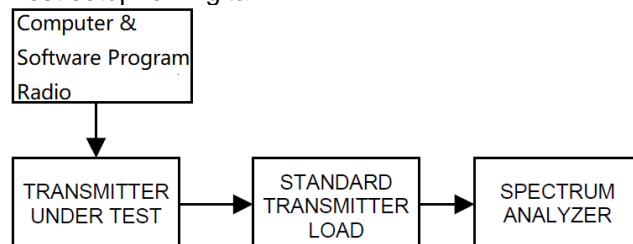
- (1) On any frequency from the centre of the authorized bandwidth f_0 to 5.625 kHz removed from f_0 : 0dB
- (2) On any frequency removed from the centre of the authorized bandwidth by a displacement frequency (f_d in kHz) of more than 5.625 kHz but no more than 12.5 kHz: At least $7.27(f_d - 2.88 \text{ kHz})$ dB.
- (3) On any frequency removed from the centre of the authorized bandwidth by a displacement frequency (f_d in kHz) of more than 12.5 kHz: At least $50 + 10 \log (P)$ dB or 70 dB, whichever is the lesser attenuation.

TEST CONFIGURATION

Test setup for Analog:



Test setup for Digital:



TEST PROCEDURE

- 1) Connect the equipment as illustrated.
- 2) Spectrum set as follow:
Centre frequency = fundamental frequency, span=120kHz for 12.5kHz channel spacing,
RBW=100Hz, VBW=1000Hz, Sweep = auto,
Detector function = peak, Trace = max hold
- 3) Key the transmitter, and set the level of the unmodulated carrier to a full scale reference line. This is the 0dB reference for the measurement.
- 4) Apply Input Modulation Signal to EUT according to Section 4.2
- 5) Measure and record the results in the test report.

TEST MODE

Please reference to the section 4.2

TEST RESULTS

☒ Passed ☐ Not Applicable

TEST DATA:

Please refer to appendix C on the section 8 appendix report

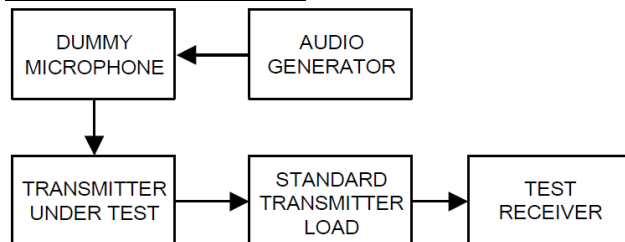
5.4 Modulation Limit

LIMIT

FCC Part 2.1047(b)

2.5kHz for 12.5 KHz Channel Spacing System

TEST CONFIGURATION



TEST PROCEDURE

- 1) Connect the equipment as illustrated.
- 2) Adjust the transmitter per the manufacturer's procedure for full rated system deviation.
- 3) Set the test receiver to measure peak positive deviation. Set the audio bandwidth for ≤ 0.25 Hz to $\geq 15,000$ Hz. Turn the de-emphasis function off.
- 4) Apply a 1000 Hz modulating signal to the transmitter from the audio frequency generator, and adjust the level to obtain 60% of full rated system deviation.
- 5) Increase the level from the audio frequency generator by 20 dB in one step (rise time between the 10% and 90% points shall be 0.1 second maximum).
- 6) Measure both the instantaneous and steady-state deviation at and after the time of increasing the audio input level
- 7) With the level from the audio frequency generator held constant at the level obtained in step 4), slowly vary the audio frequency from 300 Hz to 3000 Hz and observe the steady-state deviation. Record the maximum deviation.

TEST MODE

Please reference to the section 4.2

TEST RESULTS

☒ Passed ☐ Not Applicable

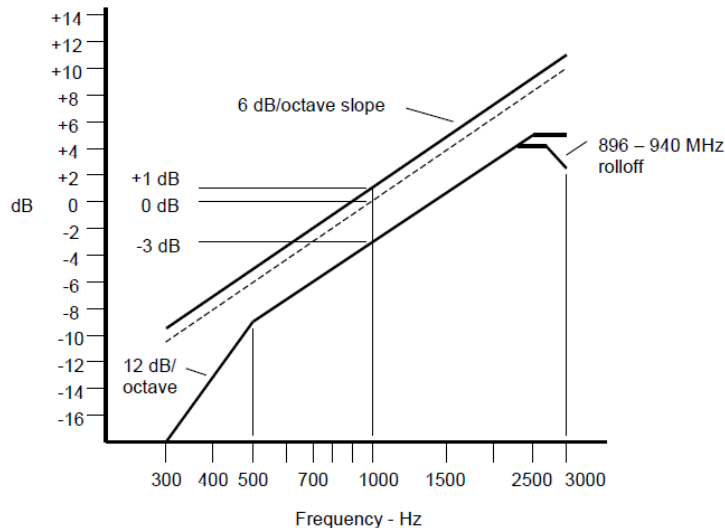
TEST DATA:

Please refer to appendix D on the section 8 appendix report

5.5 Audio Frequency Response

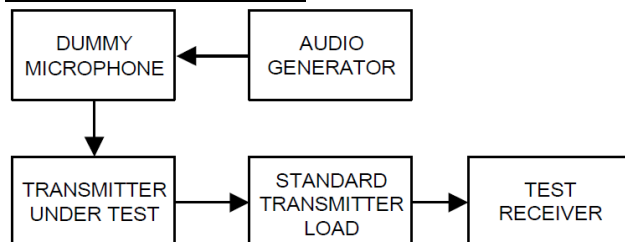
LIMIT

2.1047(a): Voice modulated communication equipment. A curve or equivalent data showing the frequency response of the audio modulating circuit over a range of 100 to 5000 Hz shall be submitted. For equipment required to have an audio low-pass filter, a curve showing the frequency response of the filter or of all circuitry installed between the modulation limiter and the modulated stage shall be submitted.



An additional 6 dB per octave attenuation is allowed from 2500 Hz to 3000 Hz in equipment operating in the 25 MHz to 869 MHz range.

TEST CONFIGURATION



TEST PROCEDURE

- 1) Connect the equipment as illustrated.
- 2) Set the test receiver to measure peak positive deviation. Set the audio bandwidth for 50 Hz to 15,000 Hz. Turn the de-emphasis function off.
- 3) Set the DMM to measure rms voltage.
- 4) Adjust the transmitter per the manufacturer's procedure for full rated system deviation.
- 5) Apply a 1000 Hz tone and adjust the audio frequency generator to produce 20% of the rated system deviation.
- 6) Set the test receiver to measure rms deviation and record the deviation reading.
- 7) Record the DMM reading as V_{REF} .
- 8) Set the audio frequency generator to the desired test frequency between 300 Hz and 3000 Hz.
- 9) Vary the audio frequency generator output level until the deviation reading that was recorded in step 6) is obtained.
- 10) Record the DMM reading as V_{FREQ} .
- 11) Calculate the audio frequency response at the present frequency as:
audio frequency response = $20 \log_{10} (V_{FREQ}/V_{REF})$.
- 12) Repeat steps 8) through 11) for all the desired test frequencies.

TEST MODE

Please reference to the section 4.2

TEST RESULTS

☒ **Passed** ☐ **Not Applicable**

TEST DATA:

Please refer to appendix E on the section 8 appendix report

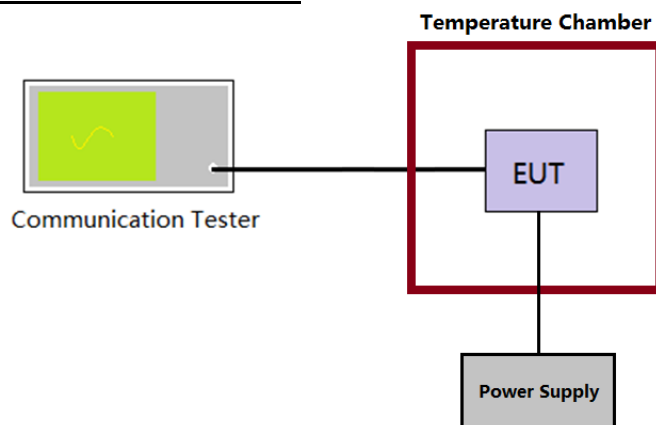
5.6 Frequency stability VS Temperature

LIMIT

FCC Part 90.213, FCC Part 2.1055

| Frequency range (MHz) | Fixed and base stations | Mobile stations | |
|--------------------------|-------------------------|---------------------------|------------------------------|
| | | Over 2 watts output power | 2 watts or less output power |
| Below 25 | 1 2 3 100 | 100 | 200 |
| 25-50 | 20 | 20 | 50 |
| 72-76 | 5 | | 50 |
| 150-174 | 5 11 5 | 6 5 | 4 6 50 |
| 216-220 | 1.0 | | 1.0 |
| 220-222 ¹² | 0.1 | 1.5 | 1.5 |
| 421-512 | 7 11 14 2.5 | 8 5 | 8 5 |
| 806-809 | 14 1.0 | 1.5 | 1.5 |
| 809-824 | 14 1.5 | 2.5 | 2.5 |
| 851-854 | 1.0 | 1.5 | 1.5 |
| 854-869 | 1.5 | 2.5 | 2.5 |
| 896-901 | 14 0.1 | 1.5 | 1.5 |
| 902-928 | 2.5 | 2.5 | 2.5 |
| 902-928 ¹³ | 2.5 | 2.5 | 2.5 |
| 929-930 | 1.5 | | |
| 935-940 | 0.1 | 1.5 | 1.5 |
| 1427-1435 | 9 300 | 300 | 300 |
| Above 2450 ¹⁰ | | | |

TEST CONFIGURATION



TEST PROCEDURE

- 1) The EUT output port was connected to communication tester.
- 2) The EUT was placed inside the temperature chamber.
- 3) Turn EUT off and set the chamber temperature to -30°C . After the temperature stabilized for approximately 30 minutes recorded the frequency as MCF_{MHz} .
- 4) Calculate the ppm frequency error by the following:

$$\text{ppm error} = (MCF_{\text{MHz}} / ACF_{\text{MHz}} - 1) * 10^6$$
 where
 MCF_{MHz} is the Measured Carrier Frequency in MHz
 ACF_{MHz} is the Assigned Carrier Frequency in MHz
- 5) Repeat step 3 measure with 10°C increased per stage until the highest temperature of $+50^{\circ}\text{C}$ reached.

TEST MODE

Please reference to the section 4.2

TEST RESULTS

☒ Passed ☐ Not Applicable

TEST DATA:

Please refer to appendix F on the section 8 appendix report

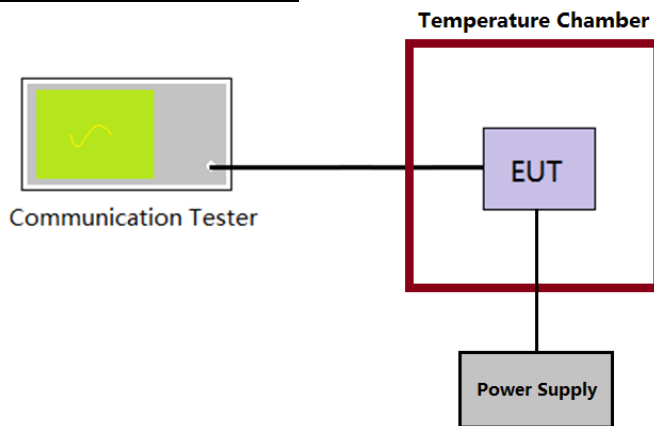
5.7 Frequency stability VS Voltage

LIMIT

FCC Part 90.213, FCC Part 2.1055

| Frequency range (MHz) | Fixed and base stations | Mobile stations | |
|--------------------------|-------------------------|---------------------------|------------------------------|
| | | Over 2 watts output power | 2 watts or less output power |
| Below 25 | 1 2 3 100 | 100 | 200 |
| 25-50 | 20 | 20 | 50 |
| 72-76 | 5 | | 50 |
| 150-174 | 5 11 5 | 6 5 | 4 6 50 |
| 216-220 | 1.0 | | 1.0 |
| 220-222 ¹² | 0.1 | 1.5 | 1.5 |
| 421-512 | 7 11 14 2.5 | 8 5 | 8 5 |
| 806-809 | 14 1.0 | 1.5 | 1.5 |
| 809-824 | 14 1.5 | 2.5 | 2.5 |
| 851-854 | 1.0 | 1.5 | 1.5 |
| 854-869 | 1.5 | 2.5 | 2.5 |
| 896-901 | 14 0.1 | 1.5 | 1.5 |
| 902-928 | 2.5 | 2.5 | 2.5 |
| 902-928 ¹³ | 2.5 | 2.5 | 2.5 |
| 929-930 | 1.5 | | |
| 935-940 | 0.1 | 1.5 | 1.5 |
| 1427-1435 | 9 300 | 300 | 300 |
| Above 2450 ¹⁰ | | | |

TEST CONFIGURATION



TEST PROCEDURE

- 1) The EUT output port was connected to communication tester.
- 2) The EUT was placed inside the temperature chamber at 25°C
- 3) Record the carrier frequency of the transmitter as MCF_{MHz}
- 4) Calculate the ppm frequency error by the following:

$$ppm\ error = (MCF_{MHz} / ACF_{MHz} - 1) * 10^6$$

where
 MCF_{MHz} is the Measured Carrier Frequency in MHz
 ACF_{MHz} is the Assigned Carrier Frequency in MHz
- 5) Repeat step 3 measure with varied $\pm 15\%$ of the nominal value measured at the input to the EUT

TEST MODE

Please reference to the section 4.2

TEST RESULTS

☒ Passed ☐ Not Applicable

Please refer to appendix G on the section 8 appendix report

5.8 Transmitter Frequency Behavior

LIMIT

FCC part 90.214

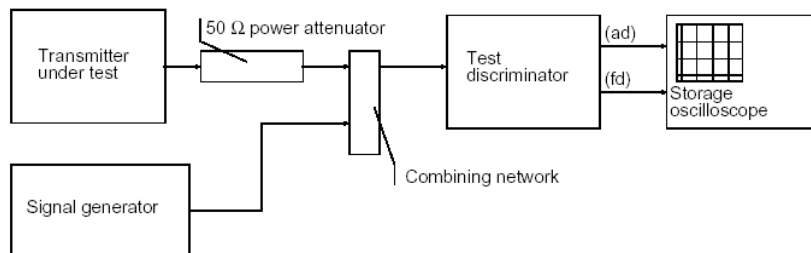
Transmitters designed to operate in the 150-174 MHz and 421-512 MHz frequency bands must maintain transient frequencies within the maximum frequency difference limits during the time intervals indicated:

| Time intervals ^{1 2} | Maximum frequency difference ³ | All equipment | |
|---|---|----------------|----------------|
| | | 150 to 174 MHz | 421 to 512 MHz |
| Transient Frequency Behavior for Equipment Designed to Operate on 25 kHz Channels | | | |
| t ₁ ⁴ | ±25.0 kHz | 5.0 ms | 10.0 ms |
| t ₂ | ±12.5 kHz | 20.0 ms | 25.0 ms |
| t ₃ ⁴ | ±25.0 kHz | 5.0 ms | 10.0 ms |
| Transient Frequency Behavior for Equipment Designed to Operate on 12.5 kHz Channels | | | |
| t ₁ ⁴ | ±12.5 kHz | 5.0 ms | 10.0 ms |
| t ₂ | ±6.25 kHz | 20.0 ms | 25.0 ms |
| t ₃ ⁴ | ±12.5 kHz | 5.0 ms | 10.0 ms |
| Transient Frequency Behavior for Equipment Designed to Operate on 6.25 kHz Channels | | | |
| t ₁ ⁴ | ±6.25 kHz | 5.0 ms | 10.0 ms |
| t ₂ | ±3.125 kHz | 20.0 ms | 25.0 ms |
| t ₃ ⁴ | ±6.25 kHz | 5.0 ms | 10.0 ms |

Note:

- On is the instant when a 1 kHz test signal is completely suppressed, including any capture time due to phasing.
 - t_1 is the time period immediately following t_{on} .
 - t_2 is the time period immediately following t_1 .
 - t_3 is the time period from the instant when the transmitter is turned off until t_{off} .
 - t_{off} is the instant when the 1 kHz test signal starts to rise.
- During the time from the end of t_2 to the beginning of t_3 , the frequency difference must not exceed the limits specified in §90.213.
- Difference between the actual transmitter frequency and the assigned transmitter frequency.
- If the transmitter carrier output power rating is 6 watts or less, the frequency difference during this time period may exceed the maximum frequency difference for this time period.

TEST CONFIGURATION



TEST PROCEDURE

- Connect DUT into Test discriminator and Storage Oscilloscope and keep DUT stats ON;
- Input 1kHz signal into DUT;
- Set the modulation domain analyzer to trigger on the rising edge of the waveform in order to capture a single-shot turn-on of the transmitter signals;
- Keep DUT in OFF state and Key the PTT;
- Observe the stored oscilloscope of modulation domain analyzer. The signal trace shall be maintained within the allowable limits during the periods t_1 and t_2 , and shall also remain within limits following t_2 ;
- Adjust the modulation domain analyzer to trigger on the falling edge of the transmitter waveform in order to capture a single-shot turn-off transmitter of the transmitter signal.
- Keep the digital portable radio in ON state and unkey the PTT;
- Observe the stored oscilloscope of modulation domain analyzer, the signal trace shall be maintained within the allowable limits during the period t_3 .
- Set the signal generator to the assigned transmitter frequency and modulate it with a 1 kHz tone at ± 12.5 kHz deviation and set its output level to -100dBm.
- Turn on the transmitter.

- 11) Supply sufficient attenuation via the RF attenuator to provide an input level to the stored oscilloscope
- 12) that is 40 dB below the maximum allowed input power when the transmitter is operating at its rated power level. Note this power level on the stored oscilloscope as P_0 .
- 13) Turn off the transmitter.
- 14) Adjust the RF level of the signal generator to provide RF power equal to P_0 . This signal generator RF level shall be maintained throughout the rest of the measurement.
- 15) Remove the attenuation, so the input power to the stored oscilloscope is increased by 30 dB when the transmitter is turned on.
- 16) Adjust the vertical amplitude control of the stored oscilloscope to display the 1000 Hz at ± 4 divisions vertically centered on the display. Set trigger mode of the Spectrum Analyzer to "Video", and tune the "trigger level" on suitable level. Then set the "trigger offset" to -10ms for turn on and -15ms for turn off.
- 17) Turn on the transmitter and the transient wave will be captured on the screen of Spectrum Analyzer. Observe the stored display. The instant when the 1 kHz test signal is completely suppressed is considered to be t_1 . The trace should be maintained within the allowed divisions during the period t_1 and t_2 .
- 18) Then turn off the transmitter, and another transient wave will be captured on the screen of Spectrum
- 19) Analyzer. The trace should be maintained within the allowed divisions during the period t_3 .

TEST MODE

Please reference to the section 4.2

TEST RESULTS

☒ **Passed** ☐ **Not Applicable**

TEST DATA:

Please refer to appendix H on the section 8 appendix report

5.9 Transmit Conducted Spurious Emission

LIMIT

FCC Part 90.210, FCC Part 2.1051

Emission Mask D—12.5 kHz channel bandwidth equipment. For transmitters designed to operate with a 12.5 kHz channel bandwidth, any emission must be attenuated below the power (P) of the highest emission contained within the authorized bandwidth as follows:

(3) On any frequency removed from the center of the authorized bandwidth by a displacement frequency (f_d in kHz) of more than 12.5 kHz: At least $50 + 10 \log(P)$ dB or 70 dB, whichever is the lesser attenuation.

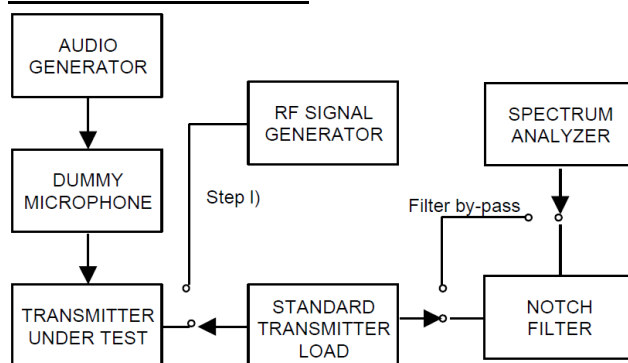
In general, the worse case attenuation requirement shown above was applied.

Calculation: Limit (dBm) = EL - 50 - 10 log (P)

EL is the emission level of the Output Power expressed in dBm,

Limit (dBm) = P(dBm) - 50 - 10 log (Pwatts) = -20dBm

TEST CONFIGURATION



TEST PROCEDURE

1. Connect the equipment as illustrated, with the notch filter by-passed.
2. Apply Input Modulation Signal to EUT according to Section 4.2
3. Adjust the spectrum analyzer for the following settings:
Below 1GHz: RBW=100kHz, VBW=300kHz
Above 1GHz: RBW=1MHz, VBW=3MHz
Detector=Peak, Sweep time=Auto, Trace=Max hold
4. Scan frequency range up to 10th harmonic.
5. Record the frequencies and levels of spurious emissions

TEST MODE

Please reference to the section 4.2

TEST RESULTS

☒ Passed ☐ Not Applicable

TEST DATA:

Please refer to appendix I on the section 8 appendix report

5.10 Transmitter Radiated Spurious Emission

LIMIT

FCC Part 90.210, FCC Part 2.1051

Emission Mask D—12.5 kHz channel bandwidth equipment. For transmitters designed to operate with a 12.5 kHz channel bandwidth, any emission must be attenuated below the power (P) of the highest emission contained within the authorized bandwidth as follows:

(3) On any frequency removed from the center of the authorized bandwidth by a displacement frequency (f_d in kHz) of more than 12.5 kHz: At least $50 + 10 \log(P)$ dB or 70 dB, whichever is the lesser attenuation.

Emission Mask E—6.25 kHz or less channel bandwidth equipment. For transmitters designed to operate with a 6.25 kHz or less bandwidth, any emission must be attenuated below the power (P) of the highest emission contained within the authorized bandwidth as follows:

(3) On any frequency removed from the center of the authorized bandwidth by more than 4.6 kHz: At least $55 + 10 \log(P)$ or 65 dB, whichever is the lesser attenuation.

In general, the worse case attenuation requirement shown above was applied.

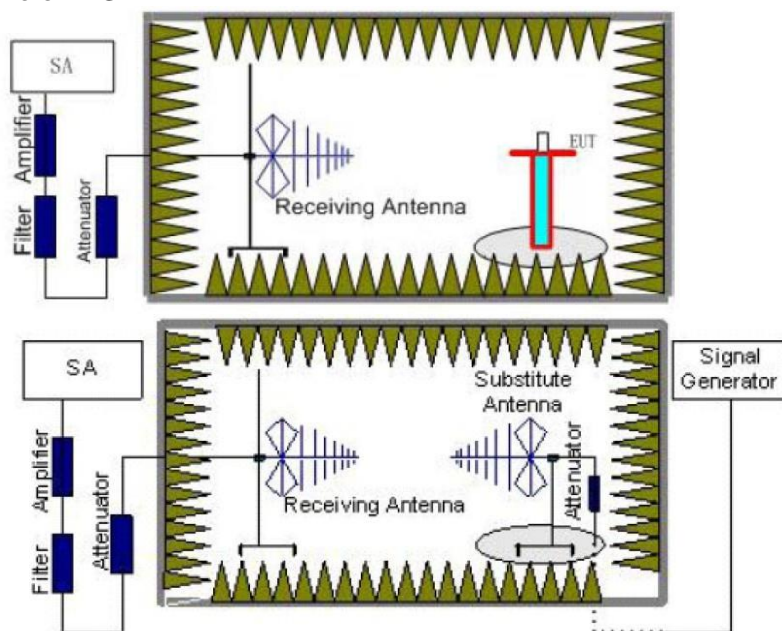
Calculation: Limit (dBm) = EL - 50 - 10 log (P)

EL is the emission level of the Output Power expressed in dBm,

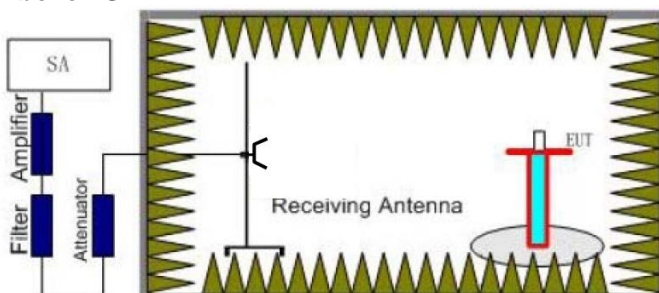
Limit (dBm) = P(dBm) - 50 - 10 log (Pwatts) = -20dBm

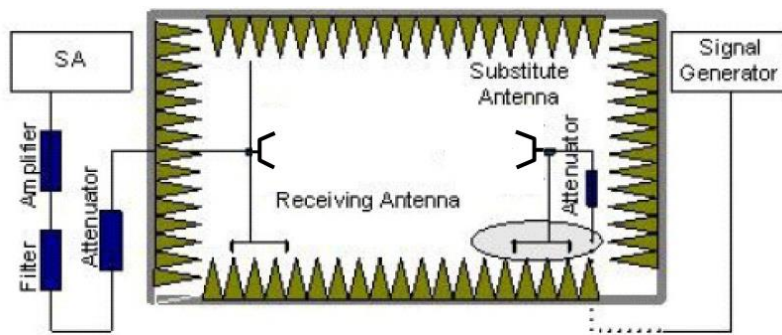
TEST CONFIGURATION

Below 1GHz:



Above 1GHz:





TEST PROCEDURE

1. Place the EUT in the center of the turntable.
 - a) For radiated emissions measurements performed at frequencies less than or equal to 1 GHz, the EUT shall be placed on a RF-transparent table at a nominal height of 80 cm above the reference ground plane
 - b) For radiated measurements performed at frequencies above 1 GHz, the EUT shall be placed on an RF transparent table at a nominal height of 1.5 m above the ground plane.
2. Unless the EUT uses an integral antenna, the EUT shall be terminated with a non-radiating transmitter load. In cases where the EUT uses an adjustable antenna, the antenna shall be adjusted through typical positions and lengths to maximize emissions levels.
3. The EUT shall be tested while operating on the frequency per manufacturer specification. Set the transmitter to operate in continuous transmit mode.
4. Receiver or Spectrum set as follow:
Below 1GHz, RBW=100kHz, VBW=300kHz, Detector=Peak, Sweep time=Auto
Above 1GHz, RBW=1MHz, VBW=3MHz, Detector=Peck, Sweep time=Auto
5. Each emission under consideration shall be evaluated:
 - a) Raise and lower the measurement antenna from 1 m to 4 m, as necessary to enable detection of the maximum emission amplitude relative to measurement antenna height.
 - b) Rotate the EUT through 360° to determine the maximum emission level relative to the axial position.
 - c) Return the turntable to the azimuth where the highest emission amplitude level was observed.
 - d) Vary the measurement antenna height again through 1 m to 4 m again to find the height associated with the maximum emission amplitude.
 - e) Record the measured emission amplitude level and frequency
6. Repeat step 5 for each emission frequency with the measurement antenna oriented in both the horizontal and vertical polarizations to determine the orientation that gives the maximum emissions amplitude.
7. Set-up the substitution measurement with the reference point of the substitution antenna located as near as possible to where the center of the EUT radiating element was located during the initial EUT measurement.
8. Maintain the previous measurement instrument settings and test set-up, with the exception that the EUT is removed and replaced by the substitution antenna.
9. Connect a signal generator to the substitution antenna; locate the signal generator so as to minimize any potential influences on the measurement results. Set the signal generator to the frequency where emissions are detected, and set an output power level such that the radiated signal can be detected by the measurement instrument, with sufficient dynamic range relative to the noise floor.
10. For each emission that was detected and measured in the initial test
 - a) Vary the measurement antenna height between 1 m to 4 m to maximize the received (measured) signal amplitude.
 - b) Adjust the signal generator output power level until the amplitude detected by the measurement instrument equals the amplitude level of the emission previously measured directly in step 5 and step 6.
 - c) Record the output power level of the signal generator when equivalence is achieved in step b).
11. Repeat step 8 through step 10 with the measurement antenna oriented in the opposite polarization.
12. Calculate the emission power in dBm referenced to a half-wave dipole using the following equation:

$$P_e = P_s(\text{dBm}) - \text{cable loss (dB)} + \text{antenna gain (dBd)}$$
 where
 P_e = equivalent emission power in dBm
 P_s = source (signal generator) power in dBm
 NOTE—dBd refers to the measured antenna gain in decibels relative to a half-wave dipole.
13. Correct the antenna gain of the substitution antenna if necessary to reference the emission power to a half-wave dipole. When using measurement antennas with the gain specified in dBi, the equivalent dipole-referenced gain can be determined from:

$$\text{gain (dBd)} = \text{gain (dBi)} - 2.15 \text{ dB}.$$

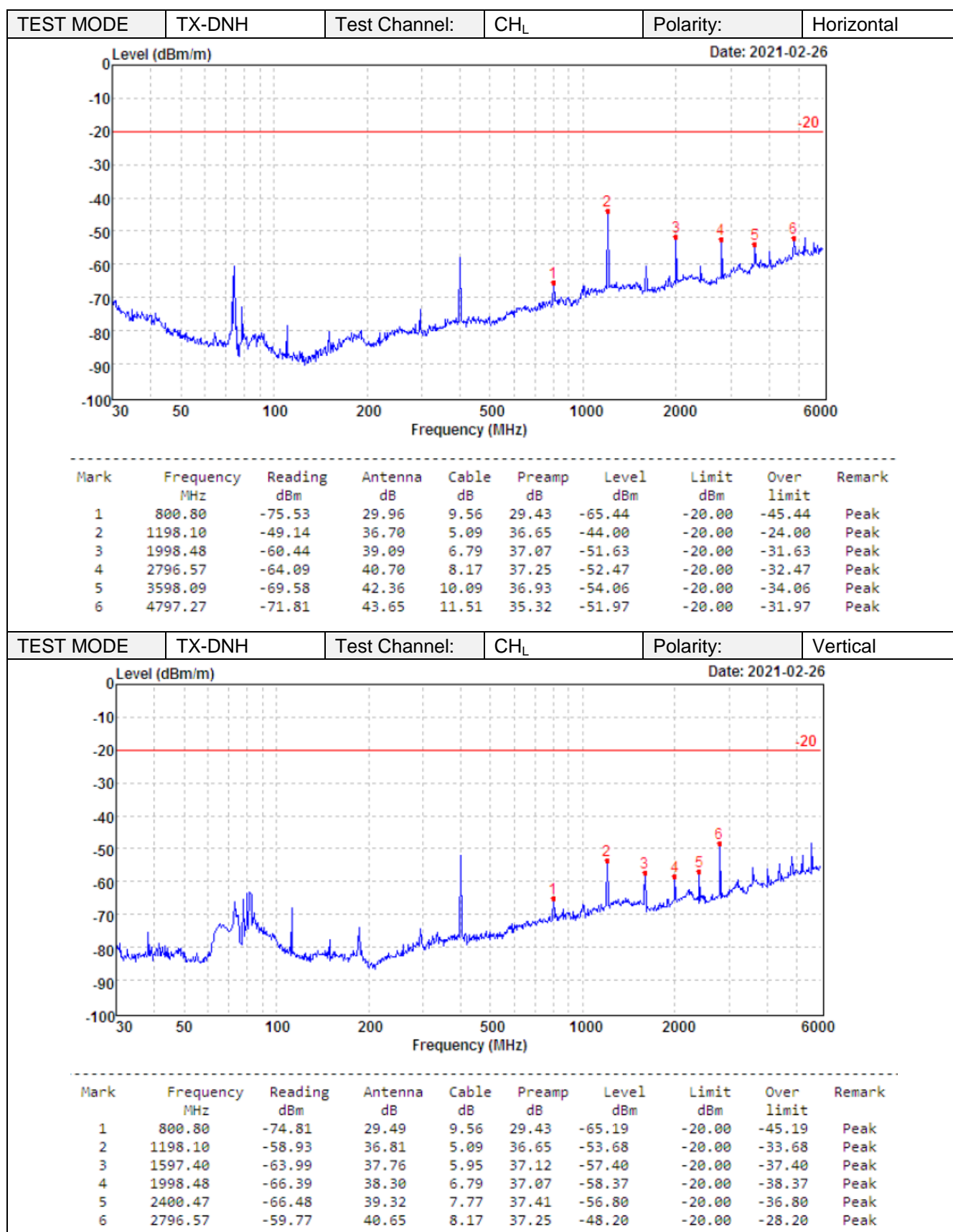
- If necessary, the antenna gain can be calculated from calibrated antenna factor information
14. Provide the complete measurement results as a part of the test report.

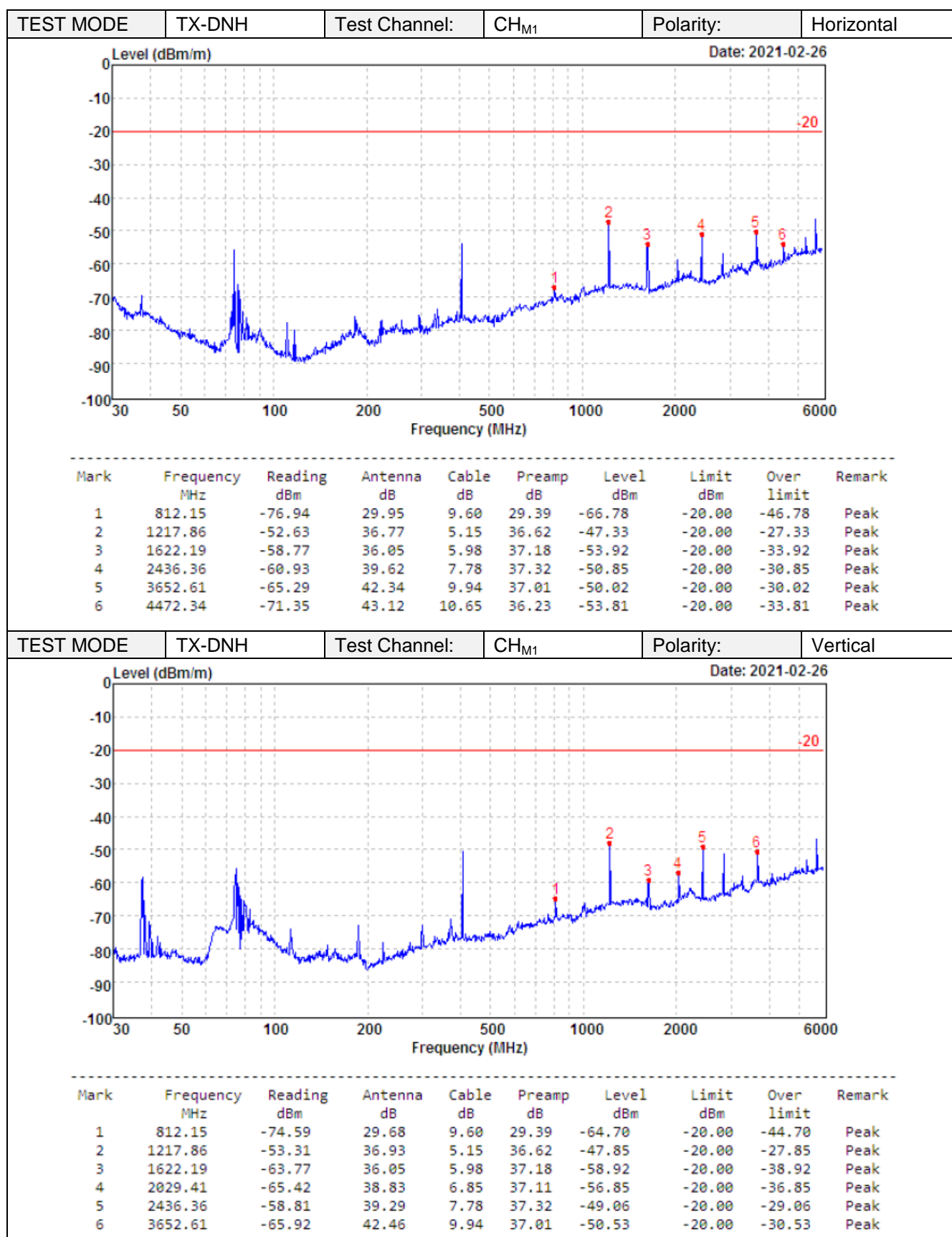
TEST MODE

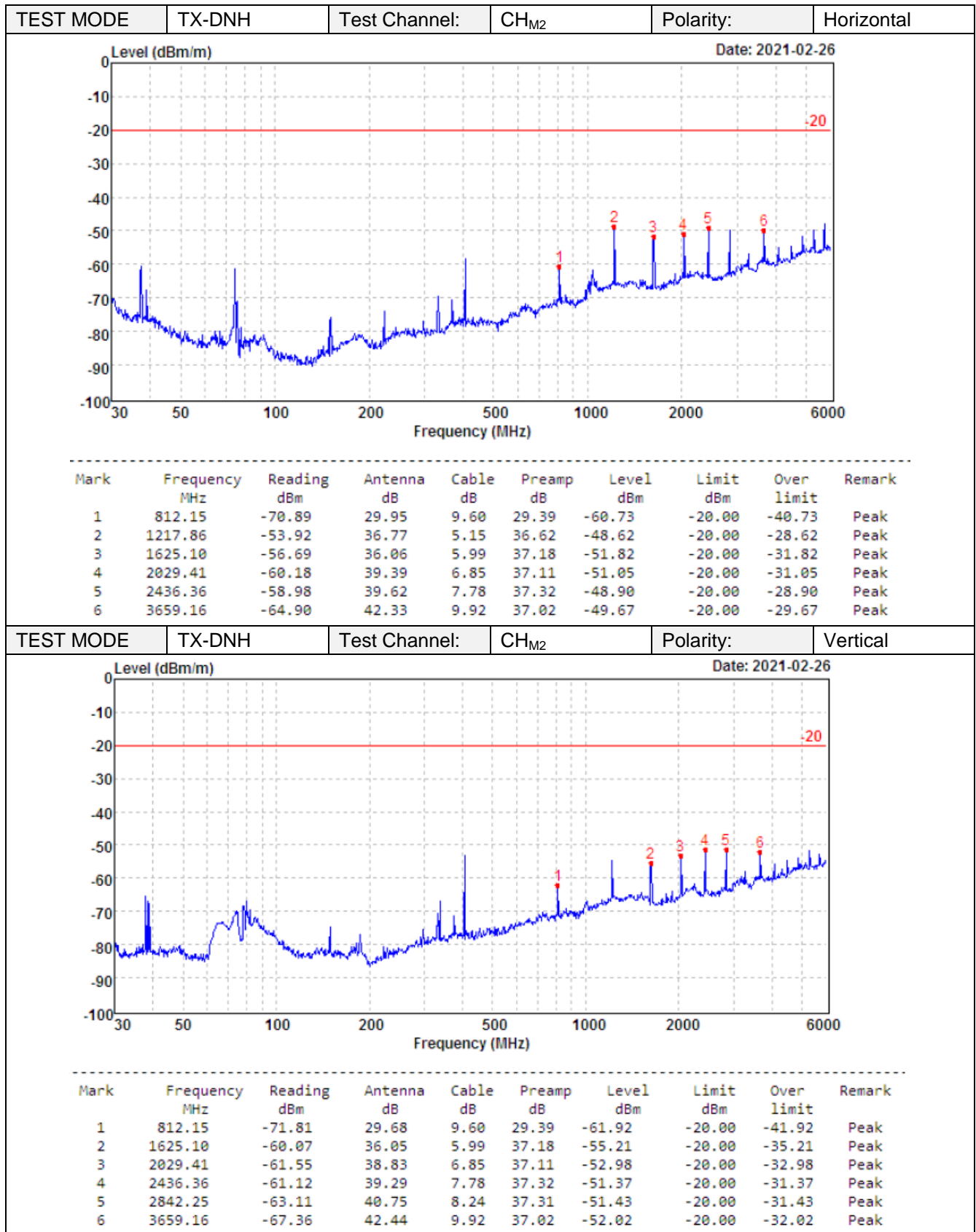
Please reference to the section 4.2

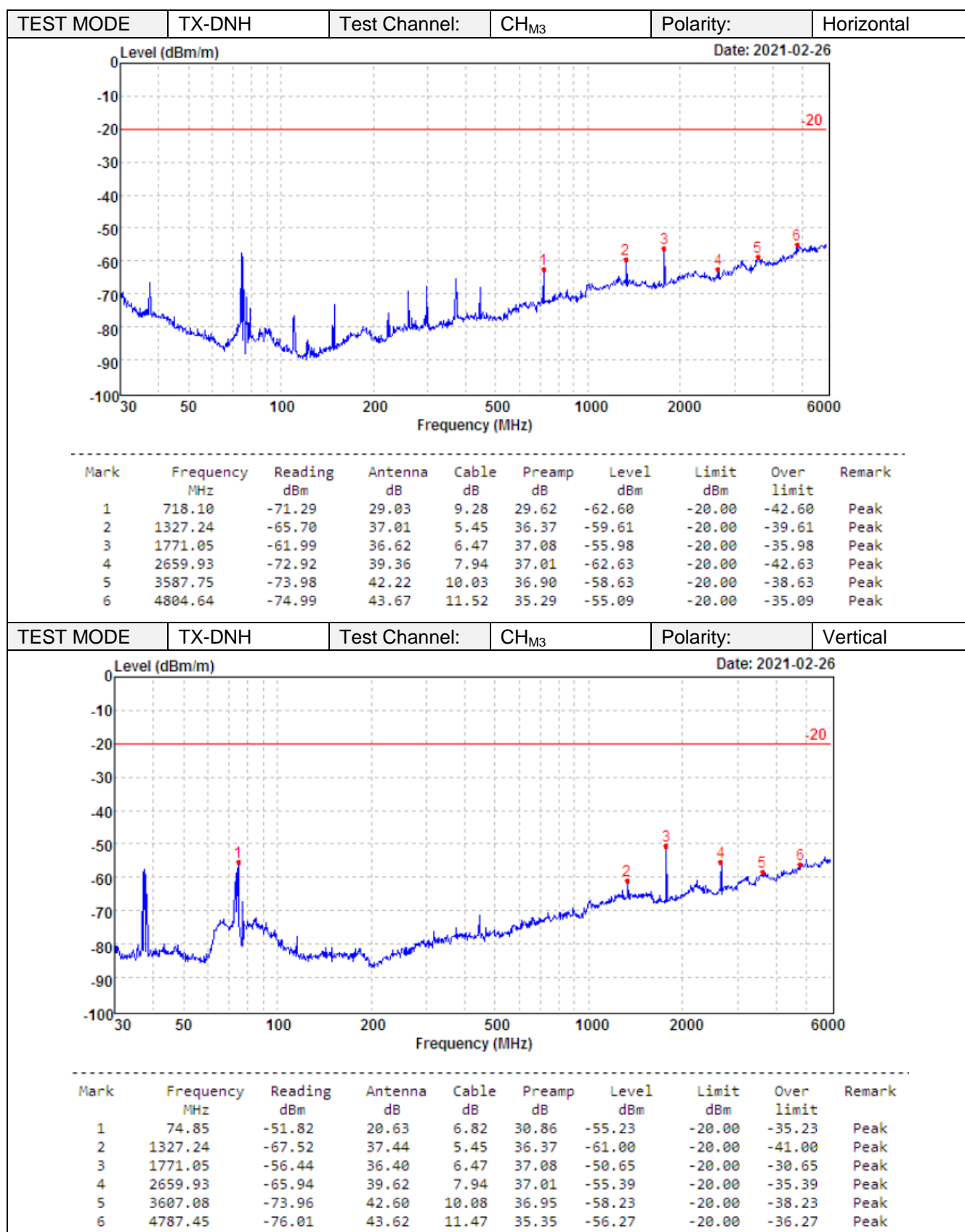
TEST RESULTS

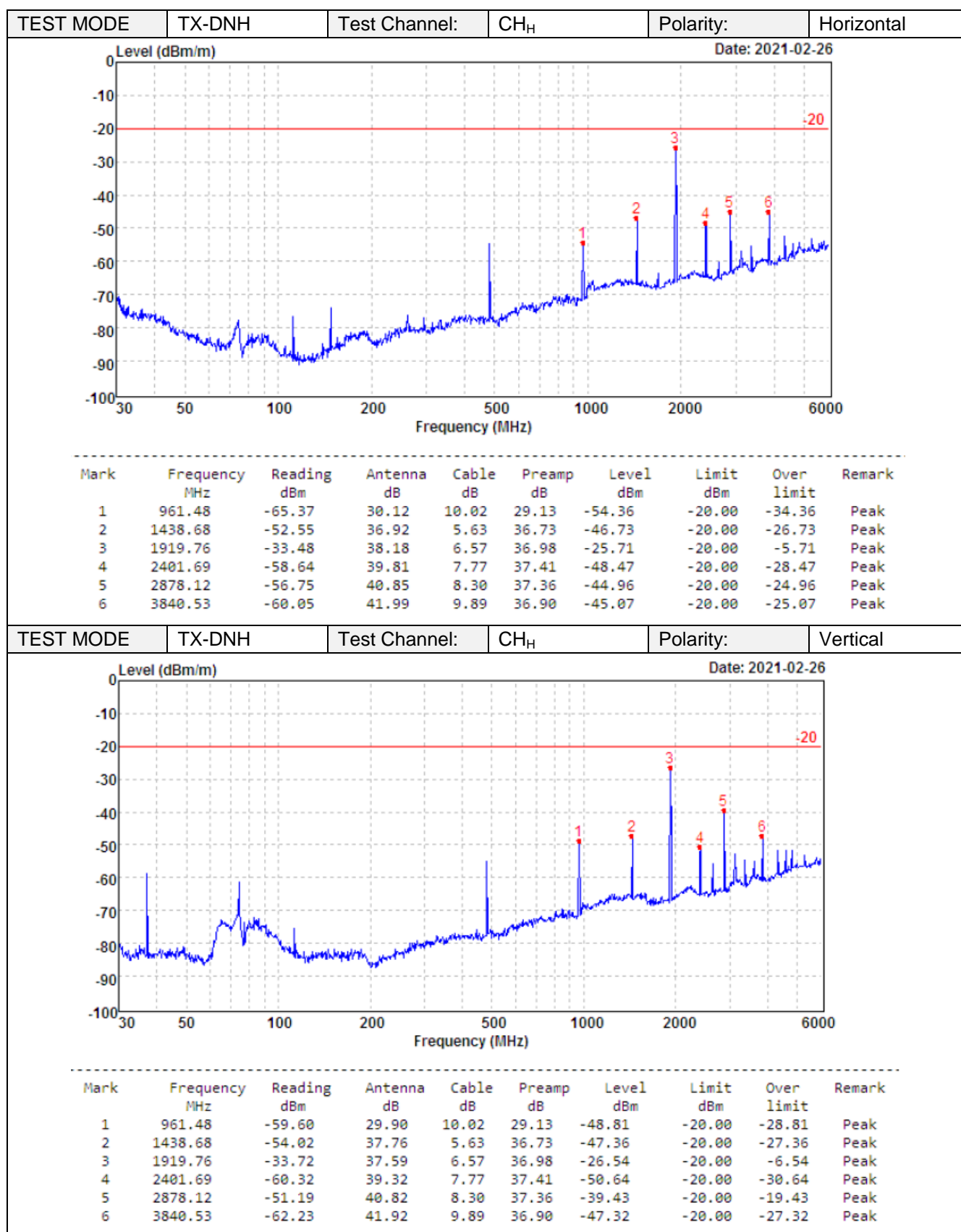
☒ **Passed** ☐ **Not Applicable**

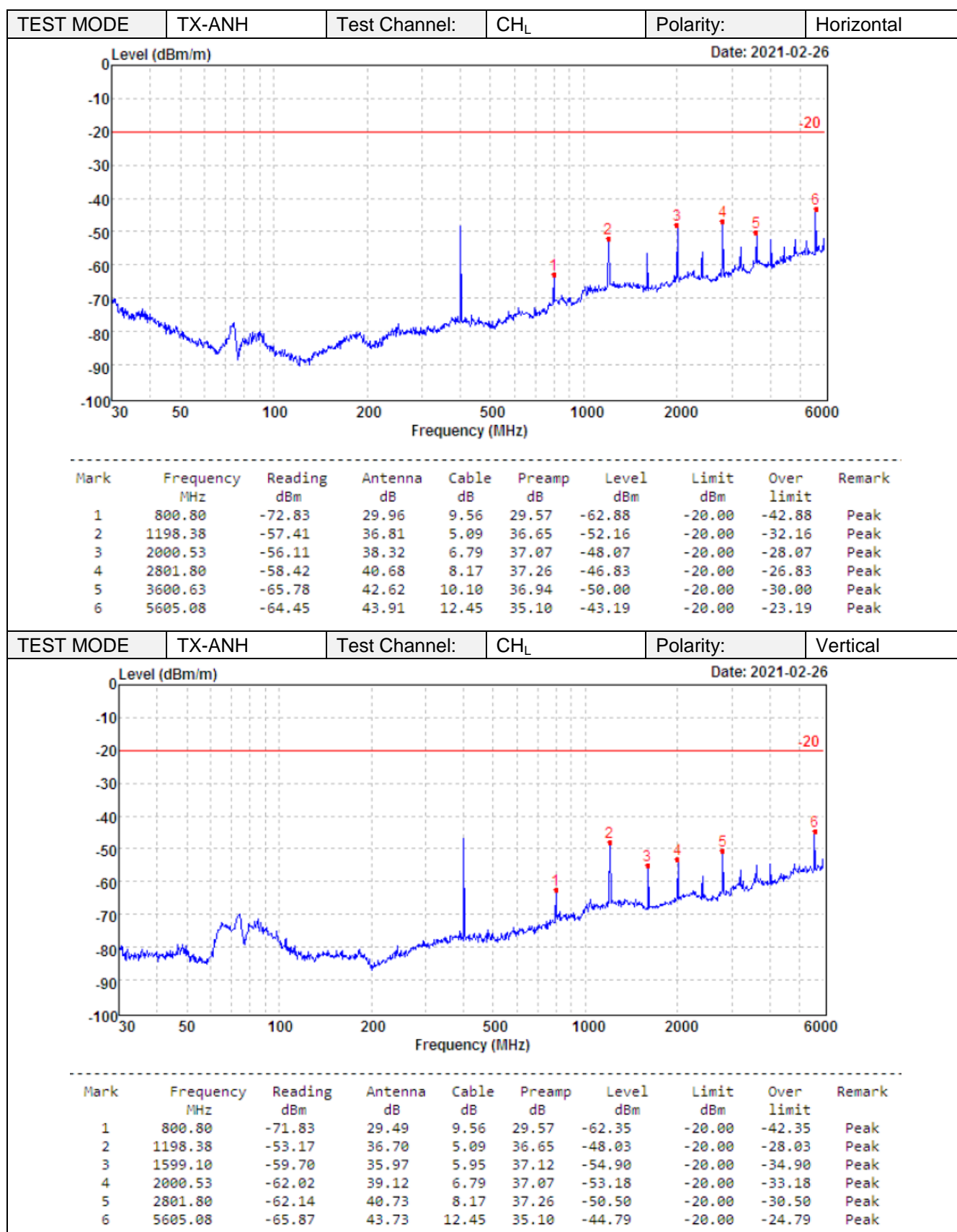


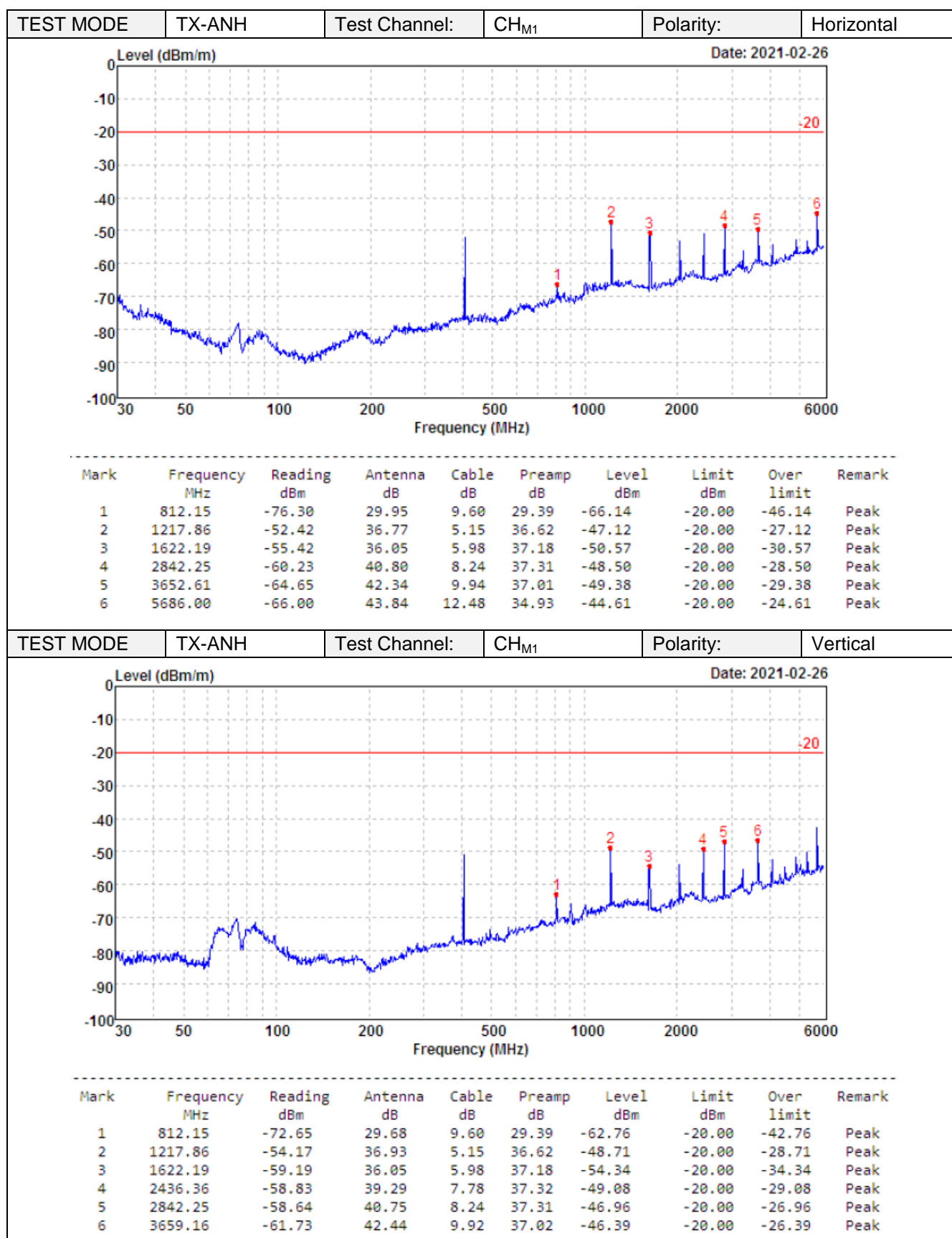


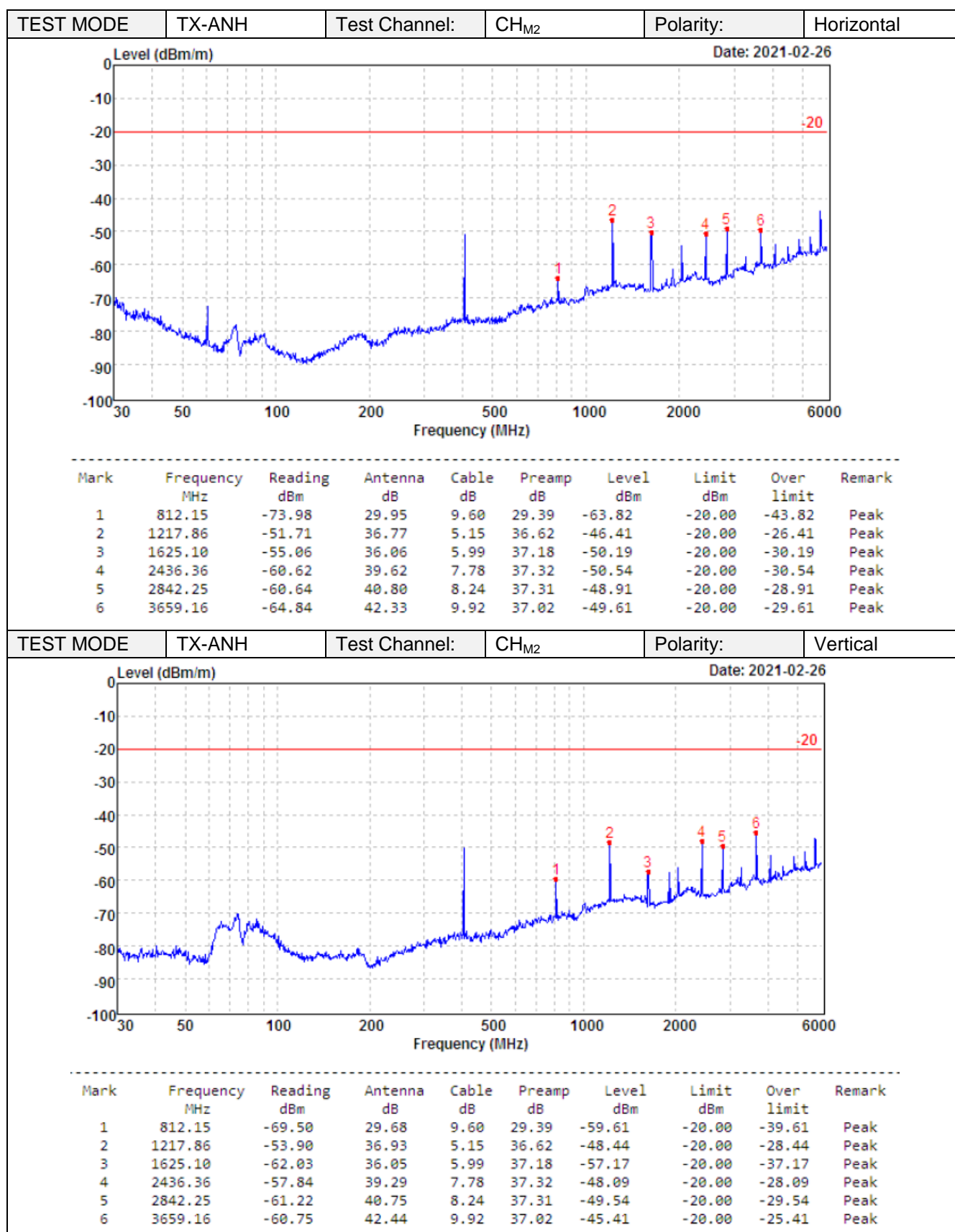


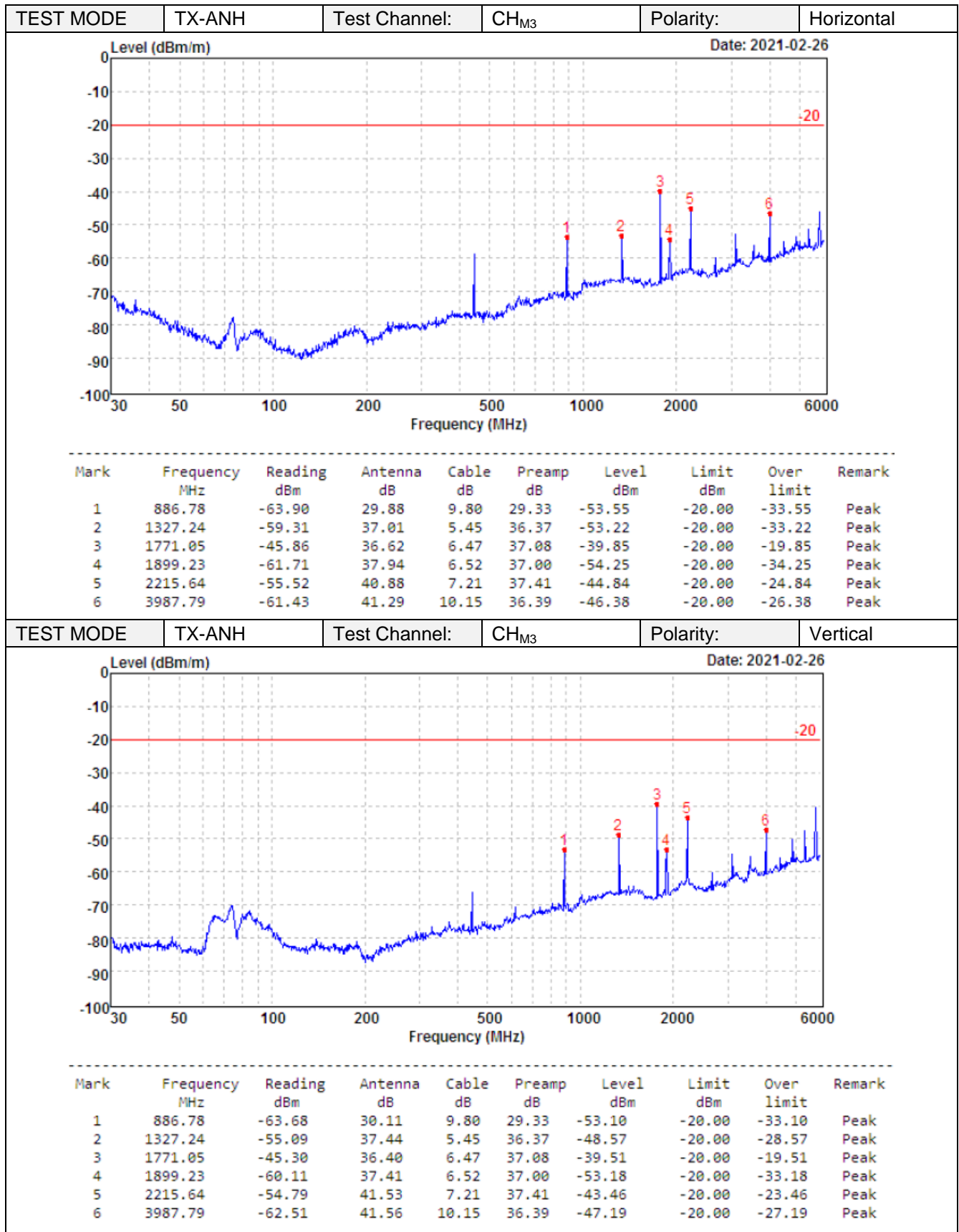


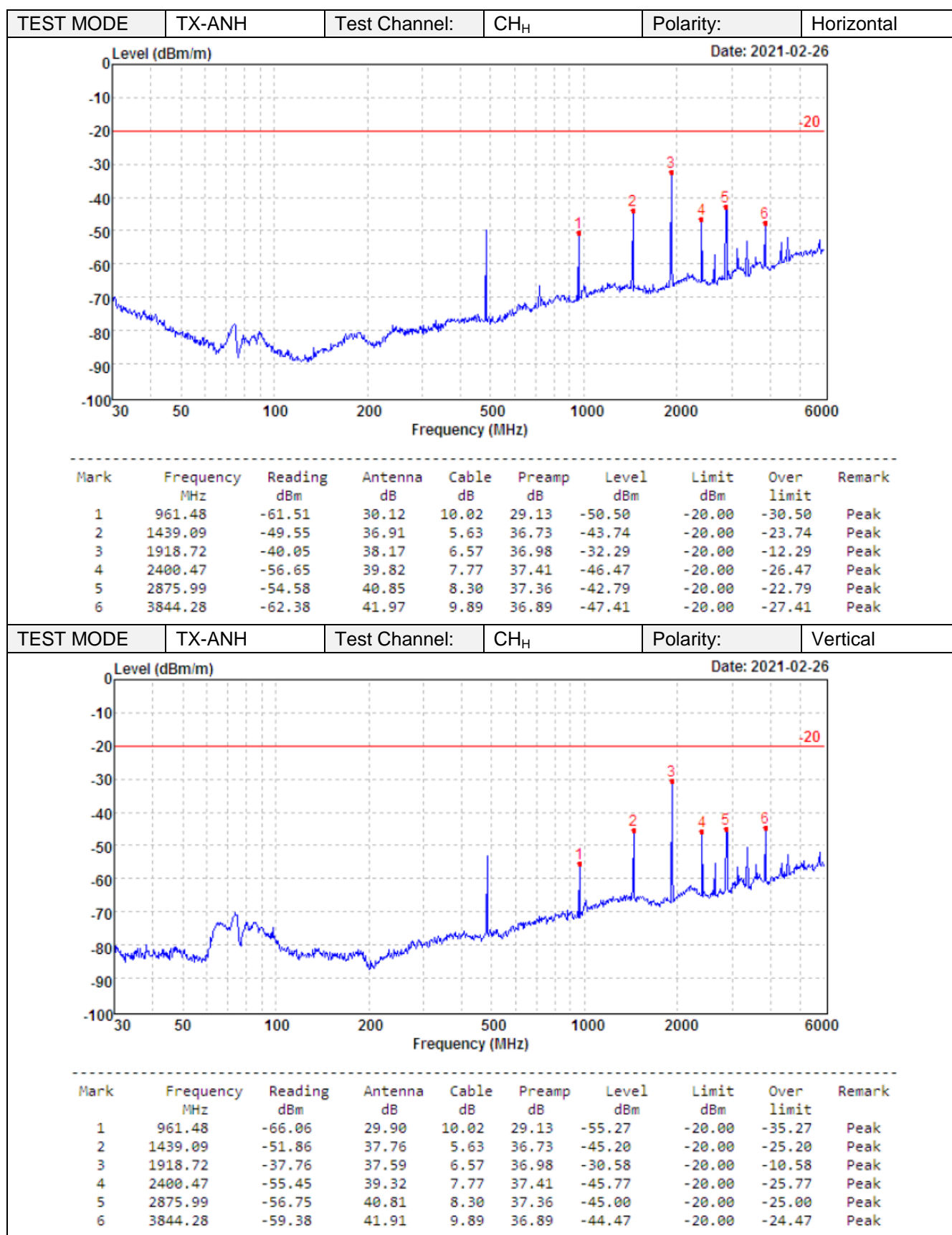




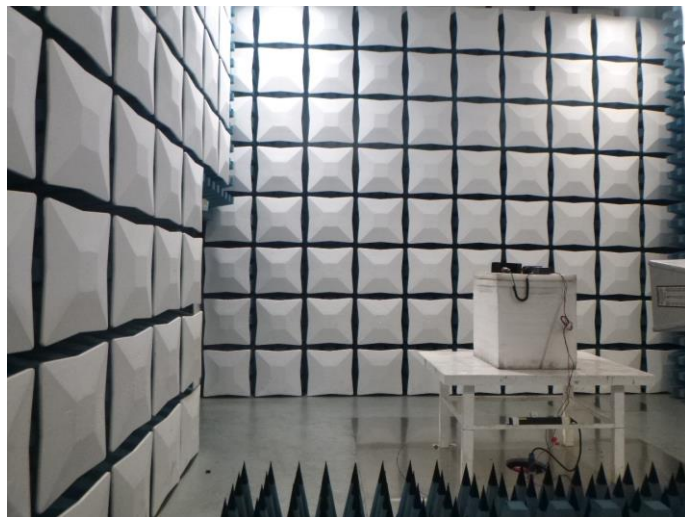
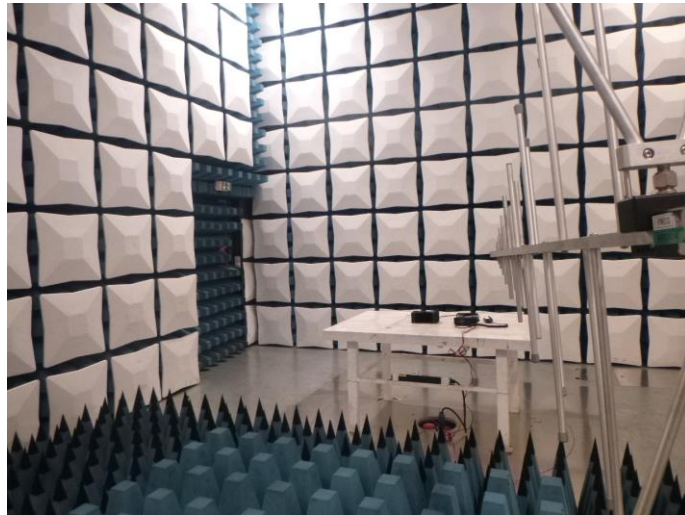


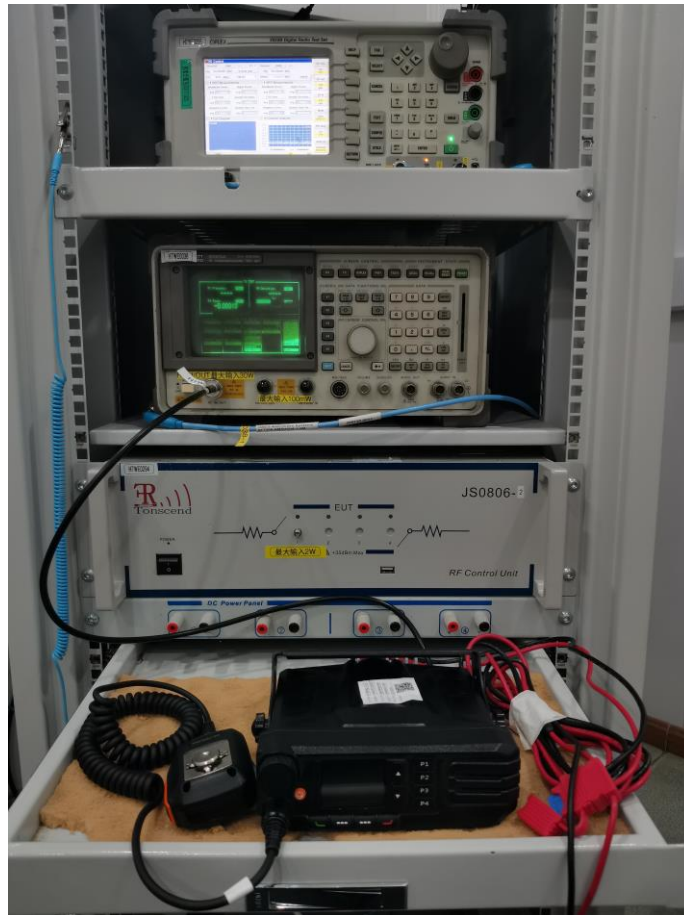






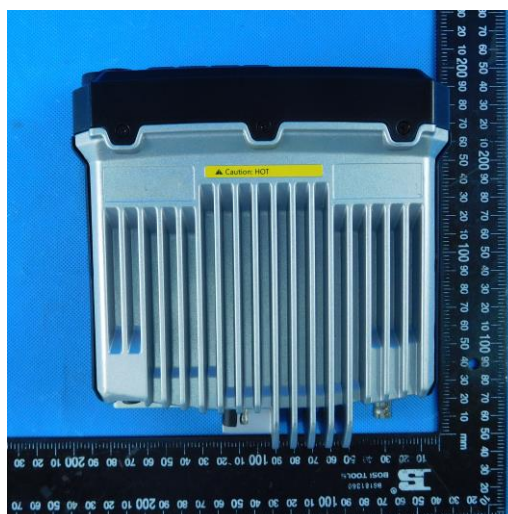
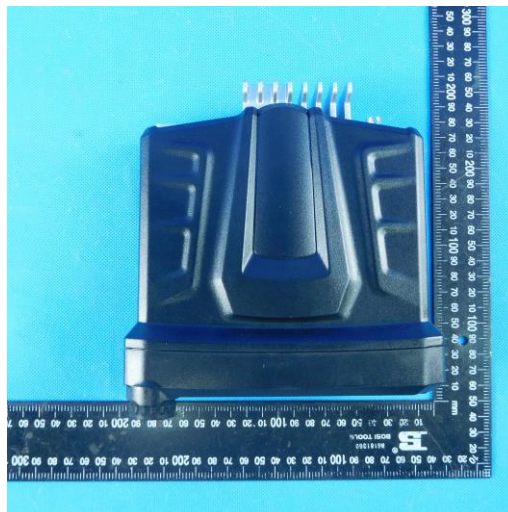
6 TEST SETUP PHOTOS





7 EXTERNAL AND INTERNAL PHOTOS

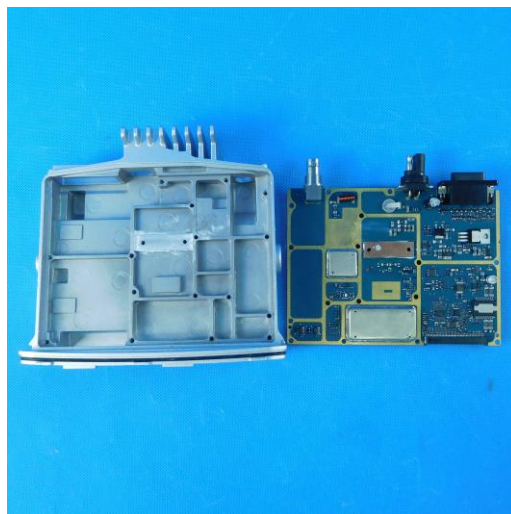
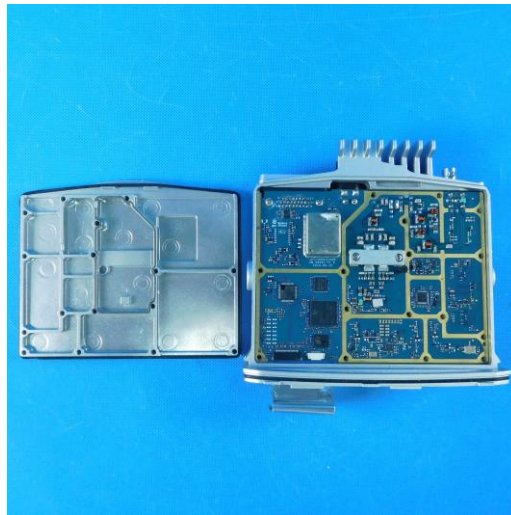
7.1 External Photos of the EUT

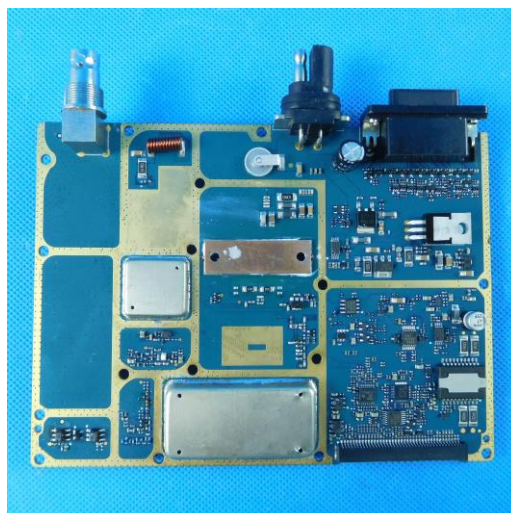
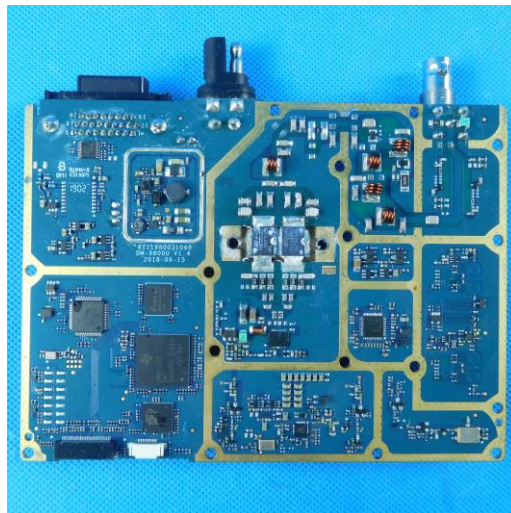
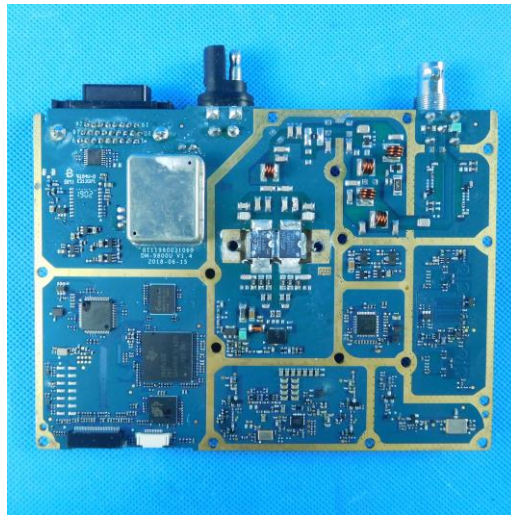


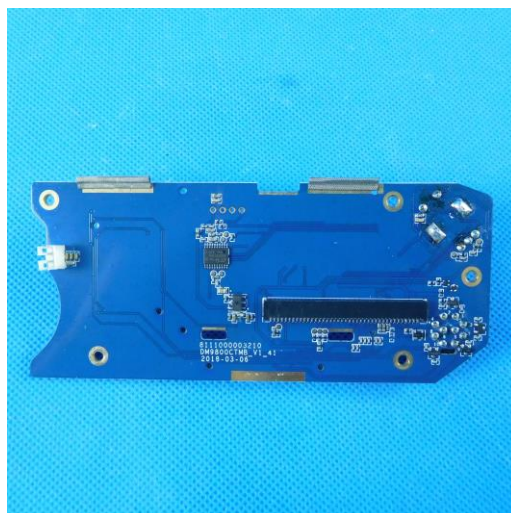
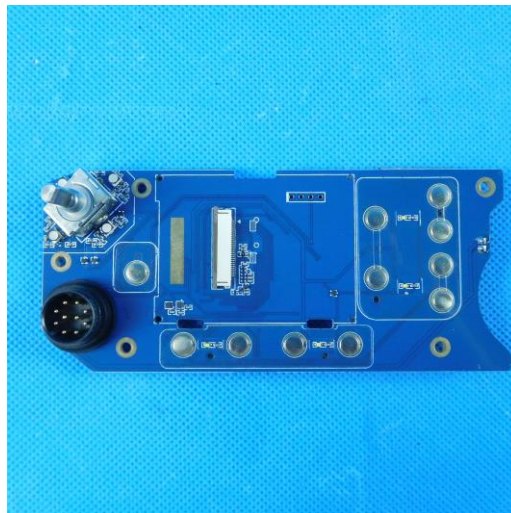
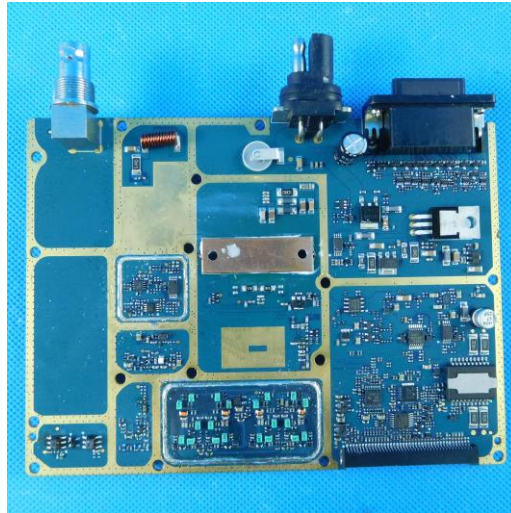




7.2 Internal Photos of the EUT







8 APPENDIX REPORT