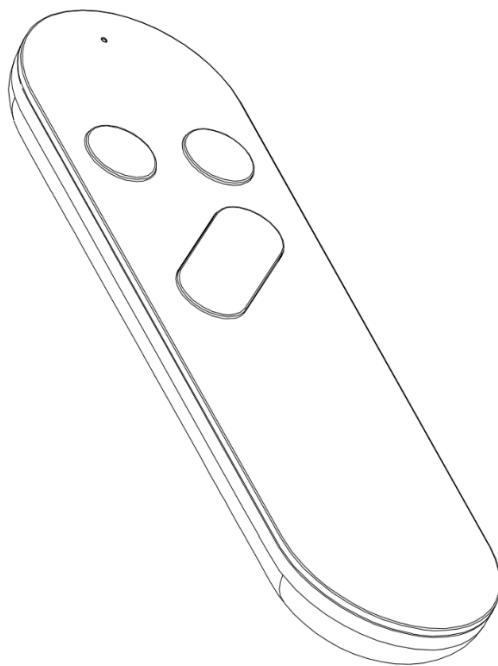


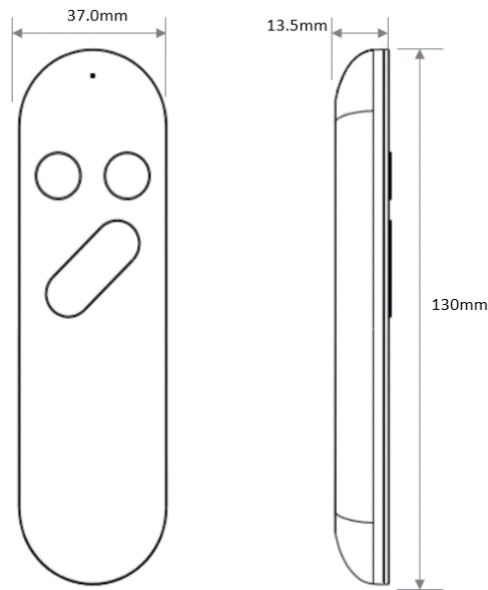
SMART Remote

INSTRUCTION



Smart remote instruction

1、 Product characteristic:



Applicant: Longhorn Intelligent Tech Co., Ltd

Address: Longhorn Hi-Tech Estate,Gongyeyuan rd., Dalang street 518109, Longhua New District, Shenzhen Guangdong,P.R.China

Manufacturer: Longhorn Intelligent Tech Co., Ltd

Address: Longhorn Hi-Tech Estate,Gongyeyuan rd., Dalang street 518109, Longhua New District, Shenzhen Guangdong,P.R.China

Factory: Longhorn Intelligent Tech Co., Ltd

Address: 3rd to 5th floors, 5th Plant, Zhonghai Science and Technology (Huizhou) Park, Western Zone, Dayawan, Huizhou City, Guangdong, P.R. China

Importer: XXXXXX

Importer Address: XXXXXX

2、 Product Key parameters:

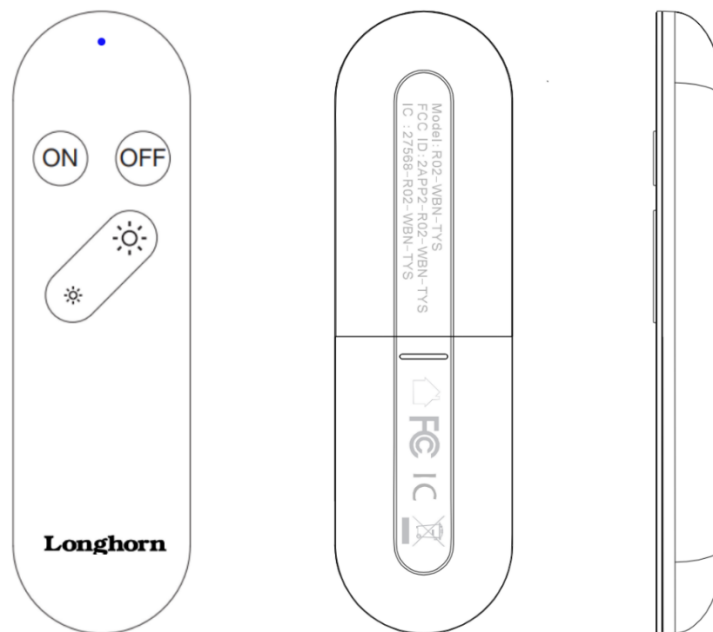
- 1、 **【Product name】** : Smart remote
- 2、 **【Model】** : R02-WBN-TYS;
- 3、 **【Rated Voltage】** : DC 2.3-3.1V, 2*1.5V AAA battery;
- 4、 **【Wireless Standard】** : 2.4Ghz, BT&Wifi IEEE 802.11 b/g/n;
- 5、 **【Communicate range】** : $\leq 20M$ (in open air environment)
- 6、 **【Device connectivity】** : <15(up to the router capacity)
- 7、 **【Static current loss】** : <4uA
【Working current】 : 140mA@3.0V
- 8、 **【Operation temperature】** : -10~+45°C;
- 9、 **【Storage temperature】** : -20~+70°C;
- 10、 **【Outline】** : 130*37*14mm;

You imagine we create

Longhorn

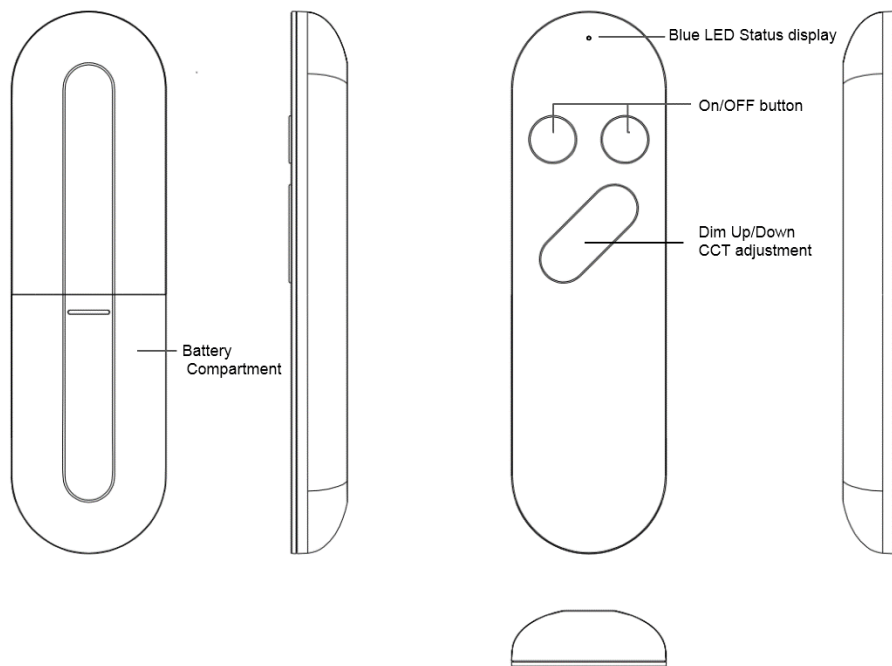
Smart remote instruction

11、【Laser】: As below for reference, different customers will have different content, all related dimensions are in line with the standard requirements



3、Function

- 1、Linkage with special products (lighting, Plug Etc.)
- 2、Switch ON/Switch OFF control for ;
- 3、Dim up / Dim down for lighting,
- 4、CCT quickly switch



Smart remote instruction

4、 Warning:

1. Only to be used indoor.
2. Only to be used in dry condition.
3. When the apparatus needs a cleaning, you can blow off dust from the apparatus with a blower or clean with rag etc.
4. Don't use solvents such as benzol, alcohol, or other fluids with very strong volatility and flammability for cleaning the apparatus body. Clean only with dry cloth.
5. This device complies with Part 15 of the FCC Rules. Operation is subject to the following two conditions: (1) this device may not cause harmful interference, and (2) this device must accept any interference received, including interference that may cause undesired operation.
6. This device contains licence-exempt transmitter(s)/receiver(s) that comply with Innovation, Science and Economic Development Canada's licence-exempt RSS(s). Operation is subject to the following two conditions: (1) This device may not cause interference. (2) This device must accept any interference, including interference that may cause undesired operation of the device.

L'émetteur/récepteur exempt de licence contenu dans le présent appareil est conforme aux CNR d'Innovation, Sciences et Développement économique Canada applicables aux appareils radio exempts de licence. L'exploitation est autorisée aux deux conditions suivantes : 1) L'appareil ne doit pas produire de brouillage; 2) L'appareil doit accepter tout brouillage radioélectrique subi, même si le brouillage est susceptible d'en compromettre le fonctionnement.

7. Changes or modifications to this unit not expressly approved by the party responsible for compliance could void the user's authority to operate the equipment.

8. NOTE: This equipment has been tested and found to comply with the limits for a Class B digital device, pursuant to Part 15 of the FCC Rules. These limits are designed to provide reasonable protection against harmful interference in a residential installation. This equipment generates uses and can radiate radio frequency energy and, if not installed and used in accordance with the instructions, may cause harmful interference to radio communications.

However, there is no guarantee that interference will not occur in a particular installation. If this equipment does cause harmful interference to radio or television reception, which can be determined by turning the equipment off and on, the user is encouraged to try to correct the interference by one or more of the following measures:

Reorient or relocate the receiving antenna.

Increase the separation between the equipment and receiver.

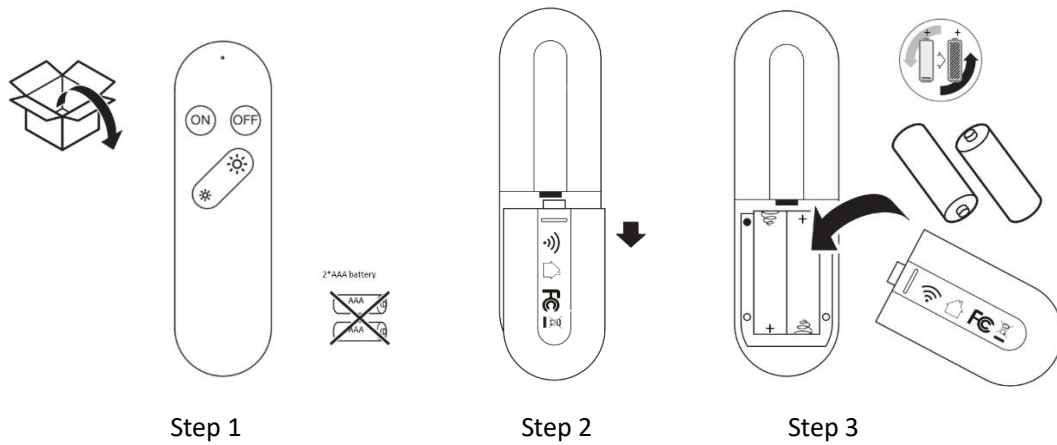
Connect the equipment into an outlet on a circuit different from that to which the receiver is connected.

Consult the dealer or an experienced radio/TV technician for help.

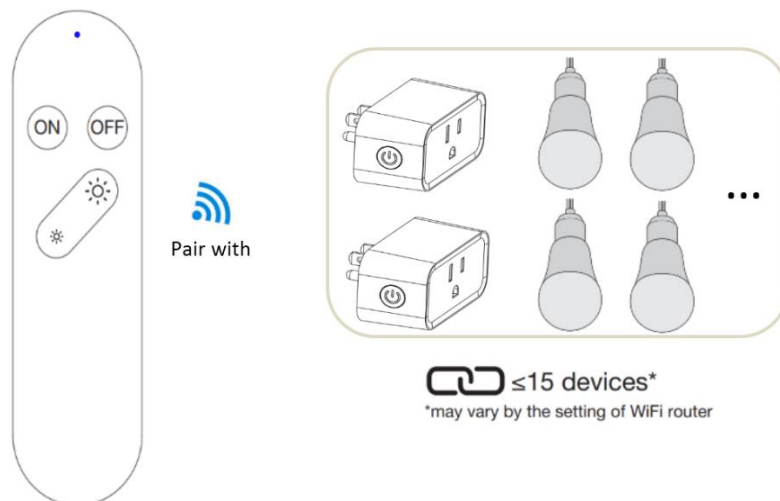
Smart remote instruction

5、Installation:

- 1.Before you use the remote,please prepare 2pcs AAA battery(1.5V)
- 2.Refer to below operating steps for install



- 3.Prepare certain pcs of special devices that require for pair with remote such as pugs, bulbs ,etc.
one remote can be matched with maximum of 15 decives.



6、APP Installation

Use your phone to scan the QR code below or search “Smart Life” in application market to download and install the App



IOS /Android QR Code

You imagine we create

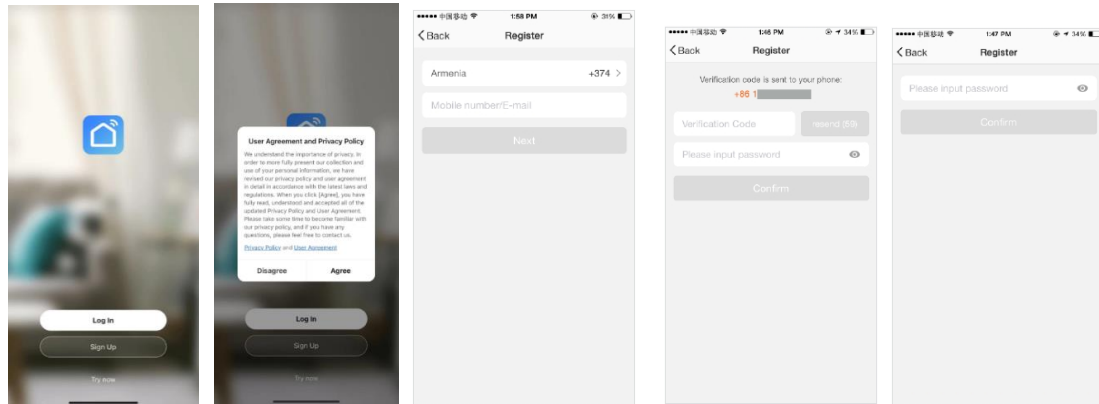
Longhorn

Smart remote instruction

7、Register/Login/Forgot password

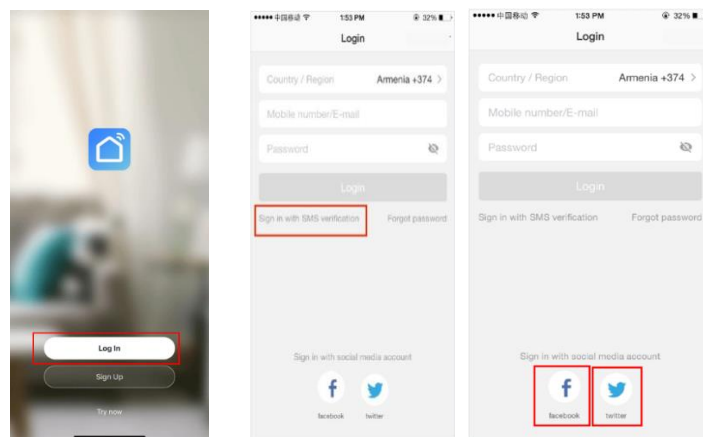
a.Register:

Open APP enter main interface, tap the 'sign up', agree the Notice, follow the interface notice and fill in the necessary information, tap "Confirm" to finish your registration.



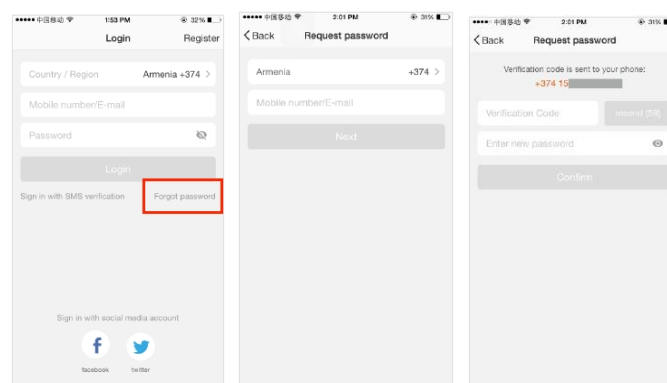
b.Login:

Click 'Log In' interface, Enter the mobile number , E-mail account and password you have registered, also support facebook and Twitter link channel to quick login.



C.Forgot password:

To get back your password , please follow the procedures: Tap"Forgot password"-> Enter the exist mobile number/E-mail ->Enter the verification code in the message/E-mail , and enter the new password , tap" Confirm" to finish



You imagine we create

Longhorn

Smart remote instruction

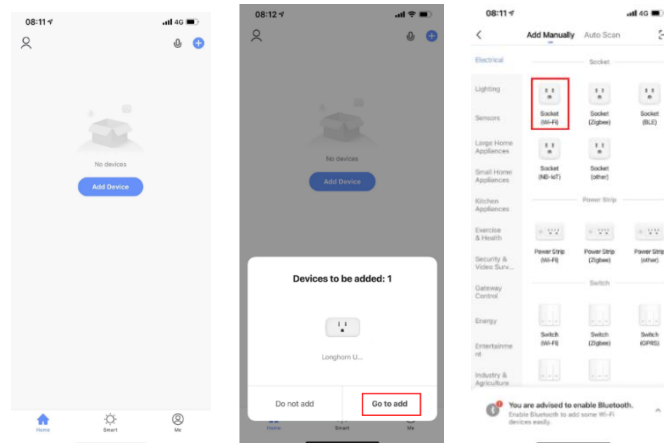
8、 Add device to network

Ensure the mobile device is in the normal Wifi connection state and the signal is good, **Just support 2.4GHz wifi model.**

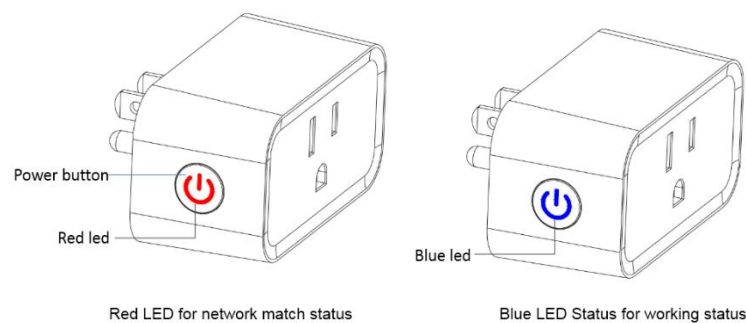
- a. click the icon "add device" to enter the 'Add Manually' interface,

Take smart plug for example to connect with remote

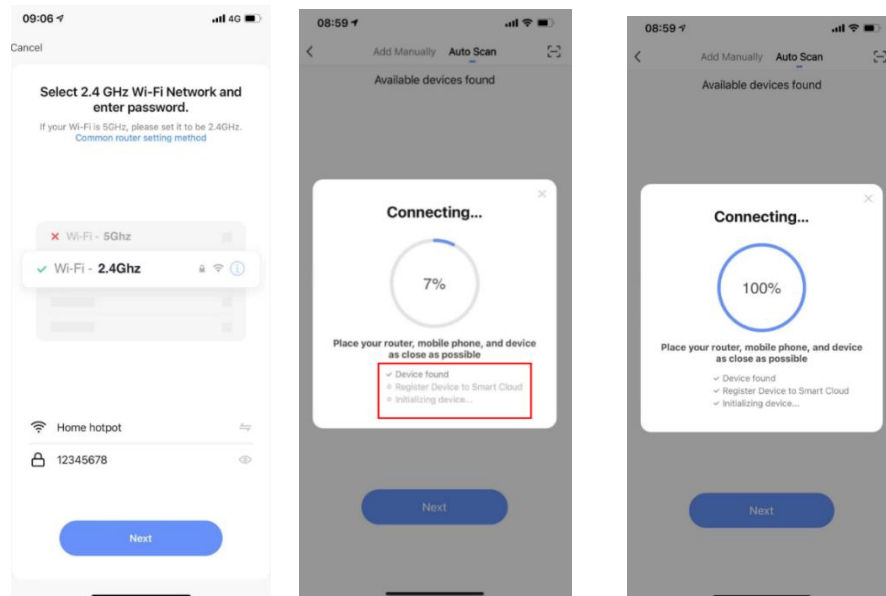
Select the corresponding Wifi socket type, also you can open your phone bluetooth to quickly add device.



- b. Ensure the device is switched on, observe whether plug status Red LED is flashing, if not, you must push the power button more than 5 seconds until the led change into flashing that represents into network matching ready status.,click the 'next' icon, automatically complete finding device-> register on cloud->device reset mode,During this period, no need any operation, just need 30~60s waiting(**Up to your router and network signal strength**) **till appear connecting 100% complete** ,red led will stop flashing enter put out state, At this time,click the power button the led will change to blue color, the blue red represents device working status



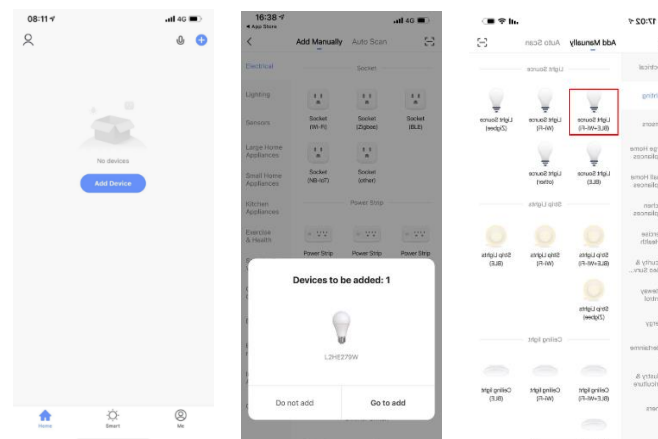
Smart remote instruction



Afer successfully adding the device, you can edit device name and binding the application environment, click “save”, change into main interface for customer to use or pair with remote.

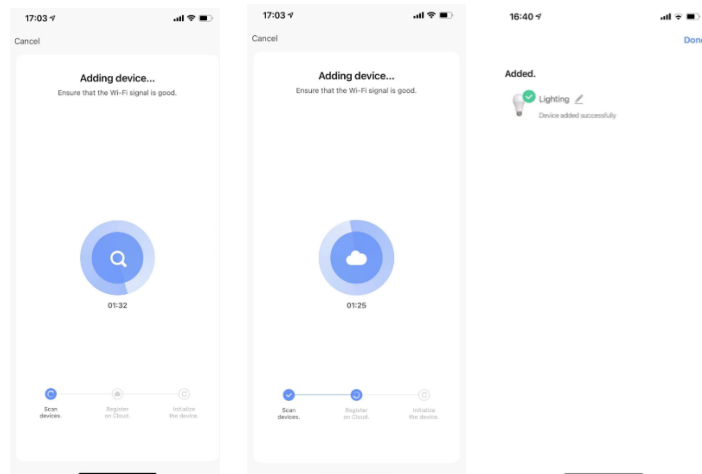
b. Take smart lighting device for example to connect with remote:


Click the icon "add device" to enter the 'Add Manually' interface, select the corresponding lithting type, also you can open your phone bluetooth to quickly add device.

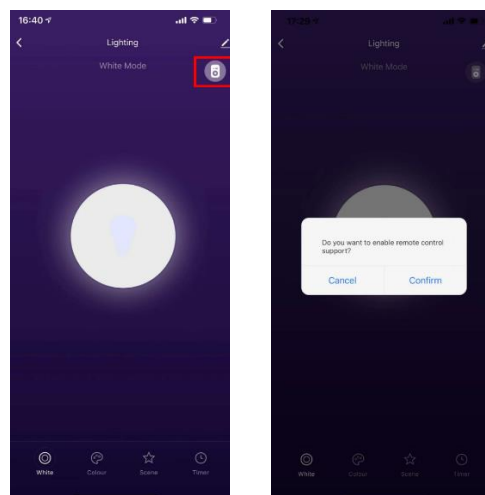


- c. Ensure the device is switched on, observe whether lighting status is flashing rapidly, if not, you must repeat three cycles to switch device on and off(**best time between each action is less than one second**) till it change into flashing that represents into network matching ready status.,click the'next' icon, automatically complete finding device-> register on cloud->device reset mode,During this period, no need any operation, just need 30~60s waiting(**Up to your router and network signal strength**) till **appear connecting 100% complete** ,device stop flashing enter always on state represents succeed,

Smart remote instruction



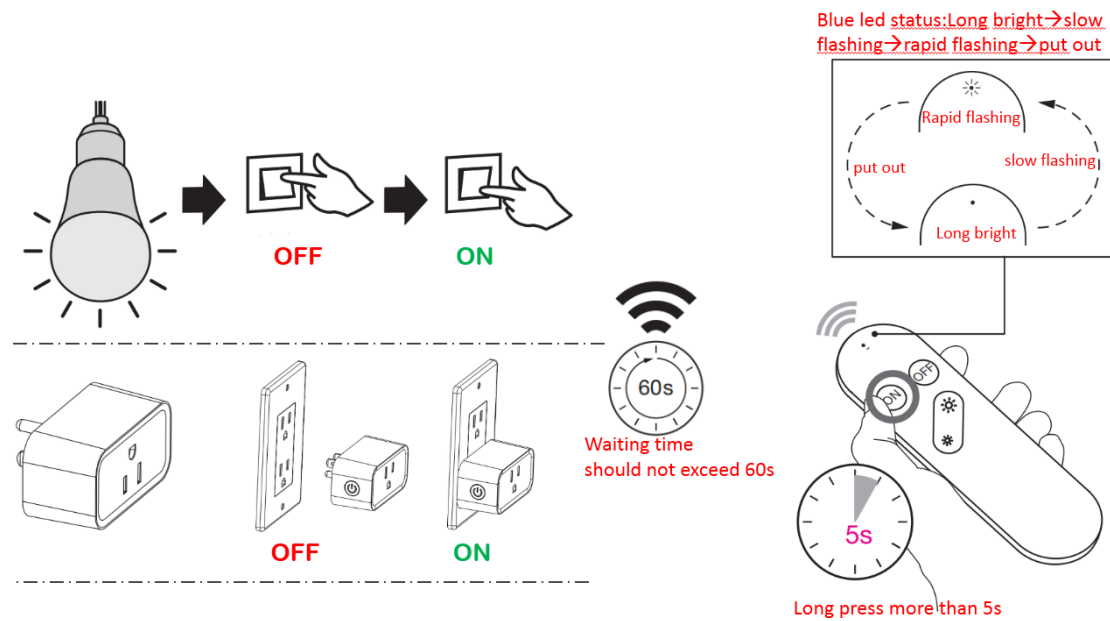
Afer successfully adding the device, you can edit device name and binding the application environment, click “save”, change into main interface , click the  to check if or not enable remote control support function,click confirm, ready to pair with remote.



9、Pair with remote

- Ensure the device has been completed networking pair with APP;
- Device must go through a cycle from power off to power on;
- Should complete the pairing action with the remote within 60 seconds, remote power on key must long press more than 5s;
- During the process remote blue led status change: Long bright→slow flashing→rapid flashing→put out

Smart remote instruction



9、Cancel pair with remote

- Long press remote power off key more than 5s;
- During the process remote blue led status change: Long bright → rapid flashing → put out
- Complete the action, all devices which matched will be all removed pair.

