

# Instruction Manual

## Turntable Player with Bluetooth



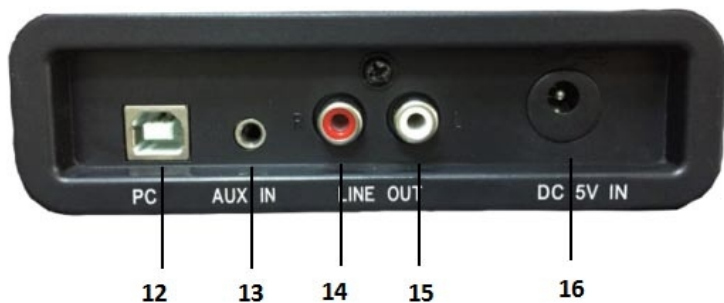
**READ INSTRUCTIONS CAREFULLY BEFORE USE AND STORE  
IN A SAFE PLACE FOR FUTURE REFERENCE**

Website: [www.jopostar.com](http://www.jopostar.com)  
Email: [info@jopostar.com](mailto:info@jopostar.com)

## DESCRIPTION



1. Dust cover
2. Adapter - Use this when playing 45rpm records with cut out centres
3. Tone arm lift
4. Auto stop control
5. Speed selection - Three speed for choice: 33.3, 45, 78 rpm.
6. Tone arm
7. Power switch / Volume control
8. Speaker
9. Bluetooth/Phono switch
10. Cartridge
11. LED indicator



- 12. PC link connector
- 13. Aux in
- 14. Line out R channel
- 15. Line out L channel
- 16. DC power jack

## INITIAL SET-UP

### MAINS CONNECTION

Ensure that the mains voltage of your home corresponds to the operating voltage of the unit. Your unit is ready to be connected to a mains voltage of 5V DC adaptor.

### AMPLIFIER CONNECTION (if required)

Whilst you can listen to your new turntable using the built in speakers you may wish to connect it to your existing Hi Fi system. Connect the audio plugs to the Line input on your mixer or amplifier using an RCA cable (not supplied)

- **Red plug into R/H channel input.**
- **White plug into L/H channel input.**

### Playing a record

- Place the record of your choice on the turntable. If required, do not forget to place the adaptor on the record spindle.
- Choose the desired playing speed using the speed selection switch between 33.3, 45 and 78rpm.
- Turn on the Rotary Power Switch, note that this also controls volume.
- Release the tone arm lock.
- Raise the arm with your hand lightly.
- Place the stylus vertically over the first track of the record, the turntable will start turning automatically.

- Put down the stylus slowly on to the record to play.
- When a record comes to the end, the turntable will stop automatically if the auto-stop switch is in the ON position. If the switch is in the off position then it will keep revolving until the tone arm is returned to the tone arm rest.
- Lift up the tone arm and put it on the rest when finished.
- Replace the protective cap on the stylus and close the tone arm lock.
- Turn off power at mains.

## Bluetooth Function:

- Press the Bluetooth switch, there is a voice “ding ding”, and blue LED will be lighting and flashing, and it will keep blue color once connected successfully.
- Search the Bluetooth name JOPOSTAR, and there is a voice “deng deng deng” meaning it connected successfully.

## INSTALLING THE SOFTWARE

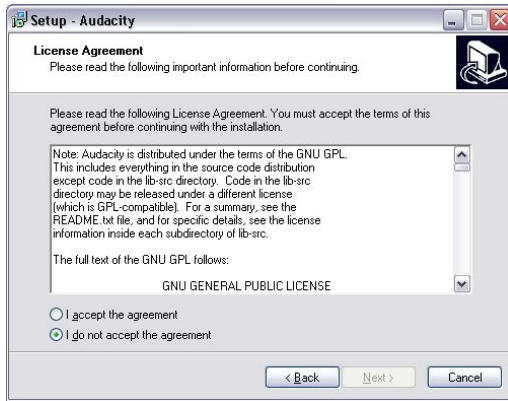
- Place the supplied CD into the drive of your computer, follow the instructions and the software will automatically install as follows: (if can not install, please download the software from <https://sourceforge.net/projects/audacity/> as its an open source)

**Note:** MAC version will require users to download from the above link.

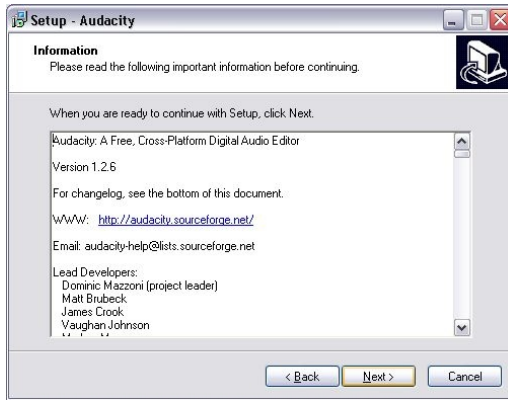
- Click ‘Next’



- Select ‘I accept’ option then click ‘Next’:



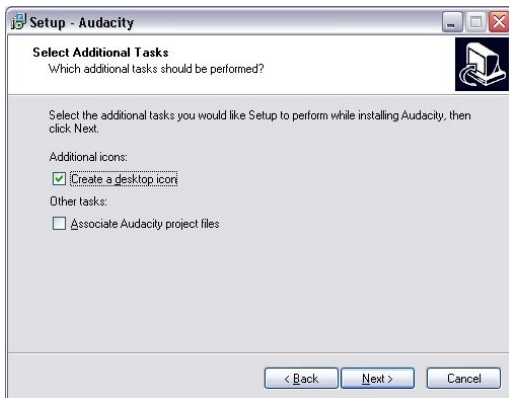
- Click 'Next':



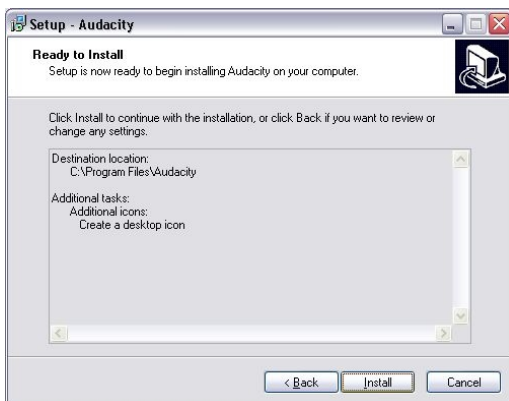
- Here either select another location or click 'Next' to continue (recommended):



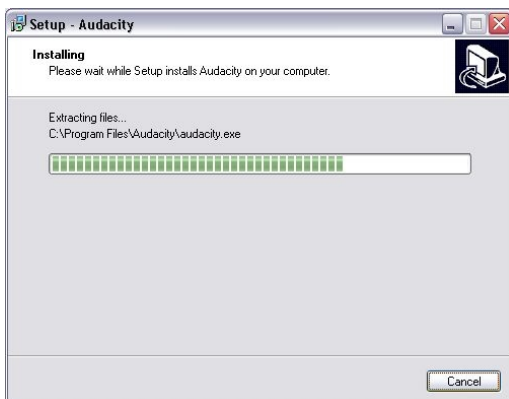
- Click 'Next' to continue:



- Click 'Install' to continue:



- The software will start to install:



- Click on 'Finish' to complete the installation:

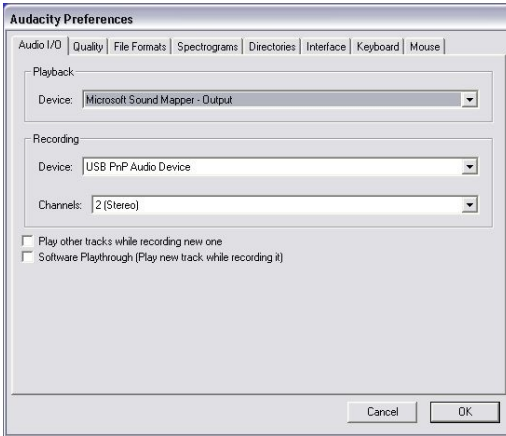


- Audacity should automatically start up, if not follow the next sequence:
- The Audacity icon will now be seen on the desktop, double click on it to start Audacity running, if an icon does not appear, go to the 'C' drive under 'My Computer', click on 'Program files' and then 'Audacity'. Right click on the 'orange ball wearing Headphones' icon and select 'Send to' then 'Desktop (create shortcut)'.

### Using Audacity


- Plug the USB cable into the back of the unit and the other end into a spare USB port on your computer.
- Run the Audacity software by double clicking the Audacity icon.
- Before recording, click on Edit at the top of the main page; select Preferences at the bottom of the menu which will open up Preferences.
- At the recording part of the window open the Device menu by using the down arrow on the right hand side. Select the USB PnP Audio Device option from the menu. Also tick the box next to 'Software Play through (Play new track while recoding it)'.
- The lower box enables the number of recording channels to be set, 1 is Mono and 2 is Stereo, select the Stereo option.

- Click 'OK' once the options have been selected:

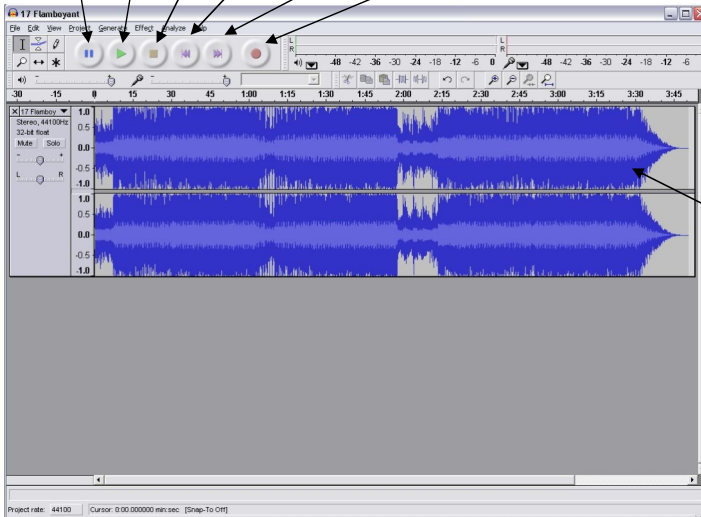


Preferences window

### Recording to computer using Audacity

- Start the record playing as described above, and press Record  at the top of the Audacity window to start recording to the computer.
- Once recorded use the Transport controls at the top of the screen to, Go to start, Play, Record, Pause, Stop and Go to end of Wave form as below:

Pause    Play    Stop    Go to Start    Go to End    Record





- Use the file, Edit, View, Project, Generate, Effect and Analyse menus to Save, Export and Manipulate your music.
- If the recording level requires adjustment, click on 'START', 'SETTINGS' and select control panel. Under Control Panel select 'SOUNDS and AUDIO DEVICES', click on the 'VOLUME' tab and select 'ADVANCED'.
- On the Master volume window select options at the top left hand corner, click on properties in the drop down menu.
- In the Properties window select "USB PnP Audio Device" from the drop down menu at the top. Click on "OK" to confirm the selection and a window will now appear with a control for the recording level. Move this control up if the recording is too quiet and down if the recording is too loud
- NOTE: the blue wave form should sit in the Audacity window such that the peaks of it stop short of the top and bottom
- Before editing your music, the recorded waveform will need to be highlighted.
- To highlight your wave form, click with the left mouse button on the left hand side of the waveform (under the L+R controls) and the waveform will go darker.
- At this point the whole waveform can be edited. However if only a section of the waveform needs to be edited (or saved) the section required can be highlighted by placing the mouse over the beginning of the section holding the left button down and dragging it right over the area required and releasing it when the end of the desired section is reached. This darkened section will now be the only audio that will be edited.
- Alternatively click on the EDIT menu at the top left and then click on SELECT then choose from: All (whole wave form), Start to Cursor or Cursor to end.
- NOTE: after recording to the Computer, the USB cable may have to be removed from the USB port in order to enable playback later from the Computer.

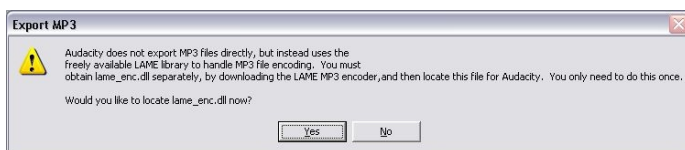
### **Exporting your music files (.WAV)**

- Once you have recorded and edited your music, you will need to save your files to the computer. To do this, click on file and move down to Export as WAV tab.

- Click on this and you will promptly be asked for the file name of the music recorded which will be saved in the location shown. At this point either make a note of the folder where your music is saved or save it in a folder of your choice.
- This can either be an existing one or a new folder.

### **Exporting your music files (.Mp3)**

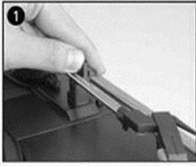
- Once you have recorded and edited your music, you will need to save your files to the computer. To do this click on file and move down to Export as Mp3 tab.
- Click on this and you will promptly be asked for the file name of the music recorded which will be saved in the location shown. At this point either make at note of the folder where your music is saved or save it in a folder of your choice.
- This can be either an existing one or a new folder.
- NOTE: In order to activate the Export to Mp3 feature, it will be necessary to copy a file named lame\_enc.dll from the installation CD and paste it in the AUDACITY folder that contains the software on the hard drive that was copied earlier from the CD. The software will automatically detect this file and exporting as an mp3 will now be possible.



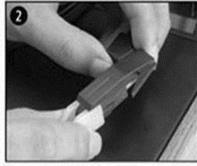
## **MAINTENANCE**

### **REPLACING THE STYLUS**

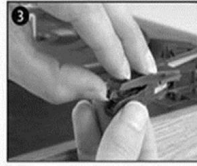
- Refer to the figures 1-8



push the arm lock to release the tone-arm.



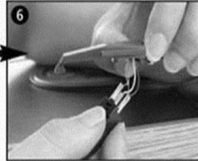
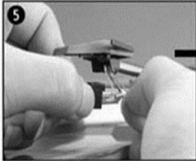
take off cap of the cartridge to expose the needle out.



separate the cartridge from the socket lightly.



take off the audio-line from the cartridges completely.

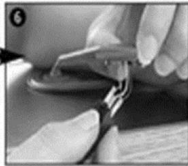
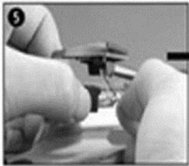


to fit a new one just in opposite deals, insert the audio-line accordingly, and install the cartridge to the socket lightly.

NOTE: Please exercise extreme care whilst performing this operation so as to avoid the tone arm and audio line wires from any damage.

### INSTALLING A NEW STYLUS CARTRIDGE

- Refer to the figures 5 & 6



### NOTES

We advise you to clean your records with an anti-static cloth to gain maximum enjoyment from them and to make them last.

We would also point out that for the same reason your stylus should be replaced periodically (approximately every 250 hours)

Dust the stylus from time to time using a very soft brush dipped in alcohol (brushing from back to front of the cartridge)

WHEN TRANSPORTING YOUR RECORD PLAYER DO NOT FORGET TO:

- Replace the protective cap on the stylus.
- Put the rest clip into the pick-up arm.

### After sales service:

JOPOSTAR is always doing our best to offer the best quality items to our customers, if any of the issues in future use, please contact with us by [info@jopostar.com](mailto:info@jopostar.com) for help before your comment online.

## FCC Statement:

This device complies with Part 15 of the FCC rules. Operation is subject to the following two conditions: 1) this device may not cause harmful interference, and 2) this device must accept any interference received, including interference that may cause undesired operation.

Note: This equipment has been tested and found to comply with the limits for a Class B digital device, pursuant to part 15 of the FCC Rules. These limits are designed to provide reasonable protection against harmful interference in a residential installation. This equipment generates uses and can radiate radio frequency energy and, if not installed and used in accordance with the instructions, may cause harmful interference to radio communications. However, there is no guarantee that interference will not occur in particular installation. If this equipment does cause harmful interference to radio or television reception, which can be determined by turning the equipment off and on, the user is encouraged to try to correct the interference by one or more of the following measures:

- Reorient or relocate the receiving antenna.
- Increase the separation between the equipment and receiver.
- Connect the equipment into an outlet on a circuit different from that to which the receiver is connected.
- Consult the dealer or an experienced radio/TV technician for help.

Changes or modifications not expressly approved by the party responsible for compliance could void the user's authority to operate the equipment.

## FCC Radiation Exposure Statement

This device complies with FCC RF radiation exposure limits set forth for an uncontrolled environment.

This transmitter must not be co-located or operating in conjunction with any other antenna or transmitter.