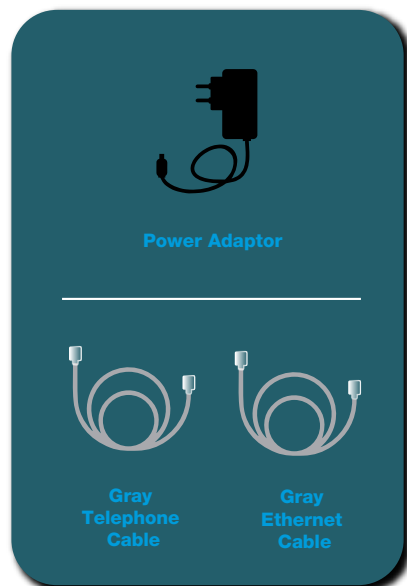


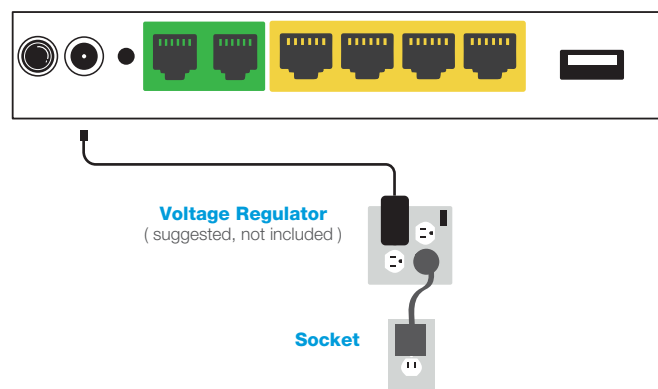
1. Content

1 ATW GPON ONT

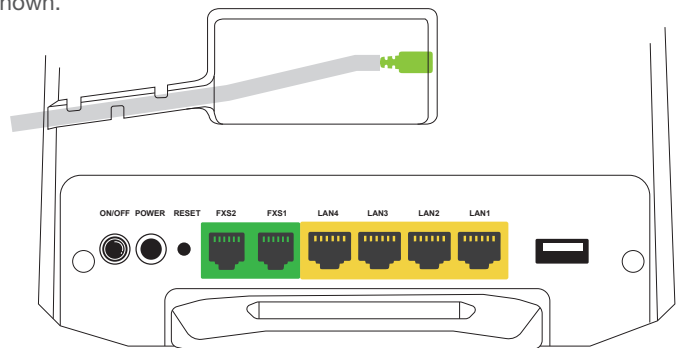


2. Connection

1. Connect the power adaptor to the socket. It is suggested to connect it to a voltage regulator (Not included). Press the BLACK button to turn on the equipment.



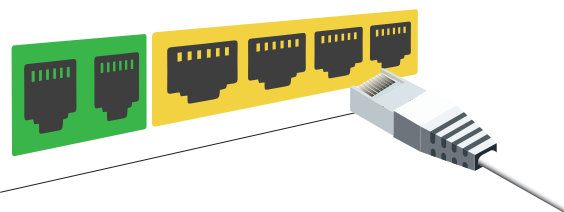
2. Verify that the fiber jumper cable (not included) is connected correctly as shown.



3. You can connect your devices by wired connection or by wireless network.

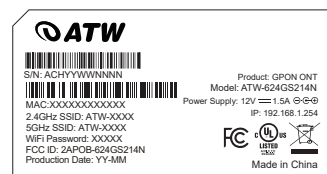
a) Wired Connection

Connect one end of the Ethernet Cable to one of the 4 yellow ports to the GPON ONT and the other to your computer.

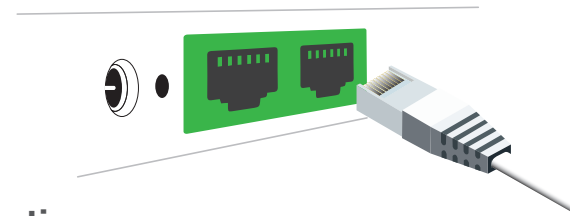


b) Wireless Connection

1. To connect wirelessly, find the name of the wireless network (SSID) and its password on the label at the back of GPON ONT.
2. Click the network icon of your computer or go to WiFi setting of your smart device, and select the SSID to join the network.



4. If you have VoIP service, connect your phone through the green telephone port of the GPON ONT as shown in the following image.



3. Function

To know the function of the LEDs and what they mean.



LED Description

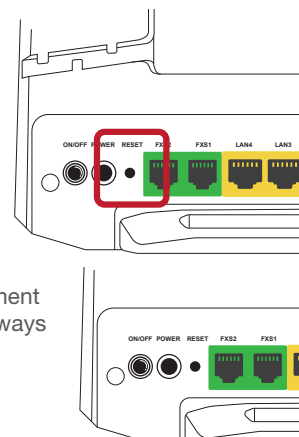
- POWER LED**
 - ON: The system has successfully started.
 - OFF: The equipment is off.
- PON LED (Connection to GPON)**
 - ON: The optical signal is synchronized.
 - Flashing: GPON ONT not registered.
 - OFF: The optical signal is not synchronized.
- LOS LED**
 - Flashing: Optical signal is not detected.
 - OFF: Optical signal is detected.
- Internet LED**
 - ON: Internet service is available.
 - OFF: No internet service.
- LAN A-D LEDs (with Ethernet cable)**
 - ON: The Ethernet port is connected to a device.
 - Flashing: The Ethernet port is connected to a device and the data is transmitting.
 - OFF: There is no device connected to the GPON ONT through one of the Ethernet LAN ports.

LED Description

- 2.4G LED**
 - 2.4GHz wireless network status LED
 - ON: 2.4GHz wireless network service is ON.
 - Flashing: 2.4GHz wireless band is connected to a device (PC, smartphone, etc.) and transmitting/receiving data.
 - OFF: 2.4GHz wireless network service is OFF.
- 5G LED**
 - 5GHz wireless network status LED
 - ON: 5GHz wireless network service is ON.
 - Flashing: 5GHz wireless band is connected to a device (PC, smartphone, etc.) and transmitting/receiving data.
 - OFF: 5GHz wireless network service is OFF.
- WPS LED**
 - WPS status LED
 - Flashing: Establishing WPS connection, will flash for 2 minutes then turn off when it's established.
 - OFF: WPS connection is established and finished. Or WPS function is not activated.
- FXS1 FXS2 LED**
 - VoIP service status LED
 - ON: SIP account registered in FXS1/ FXS2 port.
 - Flashing: FXS1/ FXS2 port is working. (phone off hook, on call, ringing, etc.)
 - OFF: SIP account is not registered in FXS1/ FXS2 port.

Reset to Default Setting

To reset your GPON ONT, it is necessary to press the RESET button for at least 10 seconds. Then the LEDs will turn off and turn on again.




ON/OFF Button

The equipment has a black button to turn the equipment ON or OFF in case necessary. Make sure that it is always ON for your correct operation.

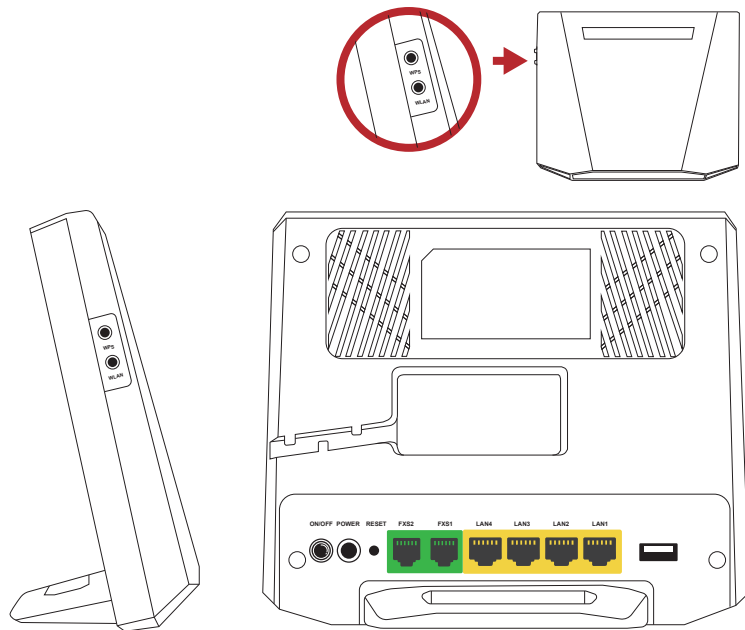
Turn ON or OFF the Wireless Network

To turn the wireless network service OFF or ON, you just have to press and immediately release the WLAN button. When the service is turned off, you will notice that the LEDs and are turned off.

WPS Function

To make a connection through WPS, all you have to do is press and hold the button for at least 1 second, the LED  will start flashing.

After making the connection with certain device, WPS LED will be OFF, then the WPS function will be activated.



4. FAQ

If you think your internet service has a problem, check the LEDs of your device. And according to what they indicate, consult the table to know what it is and how to fix it.

POWER LED is not ON	Make sure the power adapter is well connected to the device and properly connected to the power socket. Check that the cable has no cuts or is defective. If the equipment still does not turn on, please call Technical Assistance.
PON LED is not ON	Without touching it, make sure the fiber jumper cable is connected to the device. Restart the device with the ON/OFF button. If the LED stays OFF, please call the Technical Assistance.
PON LED is intermittent	Contact the Technical Assistance center and have the serial number of your equipment at hand.
LAN LED is not ON	Regarding the LAN LED, it is normal if you don't have any computer connected by Ethernet cable to the Ethernet ports. If you have connected the equipment and the LED stays turned off, please call the Technical Assistance.
Internet LED is not ON or intermittent	Restart the device with ON/OFF button. If the LED remains OFF or continues to flash, please call Technical Assistance.

If you have further questions, please contact your Internet service provider.

FCC Caution:

Any Changes or modifications not expressly approved by the party responsible for compliance could void the user's authority to operate the equipment.

This device complies with part 15 of the FCC Rules. Operation is subject to the following two conditions: (1) This device may not cause harmful interference, and (2) this device must accept any interference received, including interference that may cause undesired operation.

IMPORTANT NOTE:

Note: This equipment has been tested and found to comply with the limits for a Class B digital device, pursuant to part 15 of the FCC Rules. These limits are designed to provide reasonable protection against harmful interference in a residential installation. This equipment generates, uses and can radiate radio frequency energy and, if not installed and used in accordance with the instructions, may cause harmful interference to radio communications. However, there is no guarantee that interference will not occur in a particular installation. If this equipment does cause harmful interference to radio or television reception, which can be determined by turning the equipment off and on, the user is encouraged to try to correct the interference by one or more of the following measures:

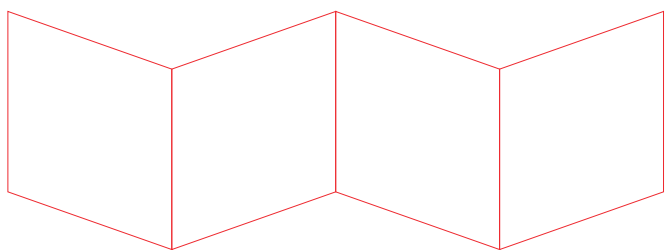
- Reorient or relocate the receiving antenna.
- Increase the separation between the equipment and receiver.
- Connect the equipment into an outlet on a circuit different from that to which the receiver is connected.
- Consult the dealer or an experienced radio/TV technician for help.

FCC Radiation Exposure Statement:

This equipment complies with FCC radiation exposure limits set forth for an uncontrolled environment. This equipment should be installed and operated with minimum distance 20cm between the radiator your body.



ATW TECHNOLOGY INC.
www.atwtechnology.com



Size:120*170mm

Color printing

100g Two sided Art Paper, Double light oil