

Size:60.8*95mm,PVC材质,覆亚膜,可移动贴纸,撕下不能留有胶印,彩色印刷,刀模线不印刷

WARNING!

Risk of Fire - No User Serviceable Parts.



To reduce the risk of injury, user must read instruction manual.

- Always wear proper protective equivalent, such as helmets. Helmets should fit properly with the chin strap in place, so that it provides protection for your entire head.
- Do not ride vehicle after consuming drugs or alcohol.
- Do not ride without proper training and guidance.
- Accelerate gradually. Never lunge or tilt forward suddenly during operation.
- Avoid obstacles and slippery surfaces that could result in a loss of balance or traction and cause a fall.
- Do not attempt to accelerate when you hear the beep warning for speeding.
- Do not start on rocky, slippery, sandy, gravelly, sloped or wet surfaces.
- Do not carry passengers. Do not perform stunts, tricks, or turn sharply.
- Riders should be at least 15 years old and 5 feet tall.
- Maximum weight load is 220 lbs (100kg).
- Maximum speed of the hoverboard is up to 11.3km/h (7mph).
- You must comply with all applicable local, state, and federal laws when operating this device.
- Do not leave unattended while charging. Do not charge for more than 6 hours. Allow to cool before charging.
- Use only the supplied battery pack with this hoverboard. (36V, 4.0Ah).
- Use only with specified charger as shown in instruction manual.

FAILURE TO FOLLOW THE ABOVE INSTRUCTIONS AND OTHER MISUSE CAN RESULT IN DEATH OR SERIOUS INJURY OR DAMAGE TO THE PRODUCT. USE AT YOUR OWN RISK.

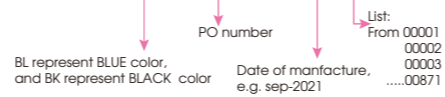
黑色款

材质：不干胶贴纸。黑白印刷，过哑胶

Size: 64x10mm, 一式两份

准备多2%的备品, 即 $854+854*2\%=871$

HB802BK9685092100001



材质：不干胶贴纸，彩色印刷，过哑胶

Size: 64 mm X 58 mm

HB802-1
VELOCITY

Electronic Self Balancing Hoverboard
Charger Input: AC 100-240V 50/60Hz 1.5A Max
Charger Output: DC 42V 1A
Built-in rechargeable battery: 36V 4.0Ah
Max speed: 7 mph (11.3 km/h)
Maximum load: 220 lbs. (100 kg)
Minimum load: 44 lbs. (20 kg)

BC FCC ID: 2APO6OTTO802B
Batch no: AA009685 0921

Made in China

Warning: Store indoors when not in use.

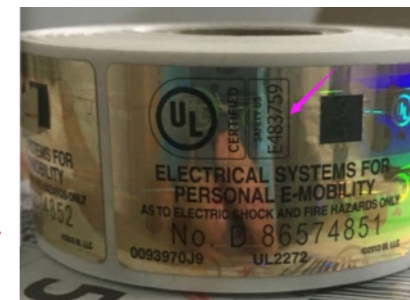
The device complies with Part 15 of the FCC Rules. Operation is subject to the following two conditions: (1) this device may not cause harmful interference, and (2) this device must accept any interference received, including interference that may cause undesired operation.

BOTTOM SIDE



Size:45*27mm

OTTO UL标: E483759



Laser stickers