



Thank you for purchasing the SWFT Sonic Electric Hoverboard.

Please read all instructions carefully before using and retain this manual for future reference.

SAFETY INSTRUCTION

THIS MANUAL APPLIES TO THE SWFT SONIC ELECTRIC HOVERBOARD.

- In order to avoid dangers that are caused by collisions, falls, and loss of control, please learn how to ride the SWFT Sonic safely.
- You can learn operating skills by reading this product manual or by searching for instructional videos online.
- This manual includes all instructions for operating the SWFT Sonic as well as precautions to take while riding. Users must read it carefully and follow the instructions before operating.
- Users are solely responsible for any damage or injury caused by failure to follow or understand the instructions in this manual. SWFT can not be held liable for any damage or injury resulting from user violation of the instructions in this manual.

ATTENTION

- Use only the supplied charger with this hoverboard.
Manufacturer: SHENZHEN HYTELON TECHNOLOGY CO. LTD.
Model: HLT-118C-420100
- Read the user manual and warning labels before riding.

- The operating temperature range of SWFT Sonic is 32-104°F (0-40°C).
- Store the SWFT Sonic in a dry, well ventilated environment.

- Do not ride on icy or slick surfaces.
- When transporting the SWFT Sonic, be careful to avoid crashes or forceful impacts as this may damage the SWFT Sonic.

WARNING

PLEASE READ THE USER MANUAL THOROUGHLY.

Failure to follow these basic instructions and safety precautions listed in this user manual can lead to damage to your device and other property, serious bodily injury, and even death.

LOW TEMPERATURE WARNING

Low temperature can affect the lubrication of moving components inside the SWFT Sonic Electric Hoverboard and increasing internal resistance. This can cause unnecessary wear to the parts inside the device and should be avoided. In low temperatures will also significantly decrease the discharge capacity and the capacity of the battery in general.

Avoid storing or using the SWFT Sonic in temperatures below 40°F (5°C).

Doing so may increase the risk of mechanical failure of the hoverboard, which may lead to damage to your hoverboard, other property, serious bodily injury, and even death.

SAFETY INSTRUCTIONS

- Keep the SWFT Sonic away from heat sources, direct sunlight, humidity, water, and any other liquids.
- To prevent electric shock, explosion, injury to yourself or others, and damage to your SWFT Sonic do not operate the device if it has been exposed to water, moisture, or any other liquids.
- Do not use the SWFT Sonic if it has been dropped or damaged in any way.
- Repairs to electrical components of the SWFT Sonic should only be performed by the manufacturer. Improper repair voids the warranty and may place the user at serious risk.

- Do not pierce, puncture or harm the exterior surface of the product in any way.
- Keep the SWFT Sonic free from dust, lint, dirt, debris and other particles that could enter the casing and damage or wear the mechanical components.

- Do not use the SWFT Sonic for anything other than its intended use. Doing so may damage the device or lead to injury to yourself or others.

INTRODUCTION

or others, property damage, bodily harm and/or death.

- This product is not a toy. Keep out of reach of children.

- Do not expose batteries, battery packs, or batteries installed in this device to excessive heat, direct sunlight, or open flame.

- Do not allow clothing, hair, feet, hands, or anything of this nature to contact moving parts, wheels, or the drivetrain while the motor is running.

- Do not operate or permit others to operate the SWFT Sonic until they understand all warnings, safety features and instructions described in this manual.

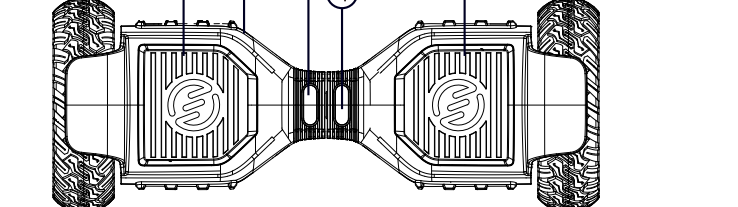
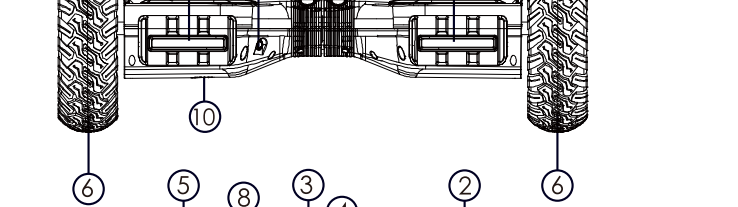
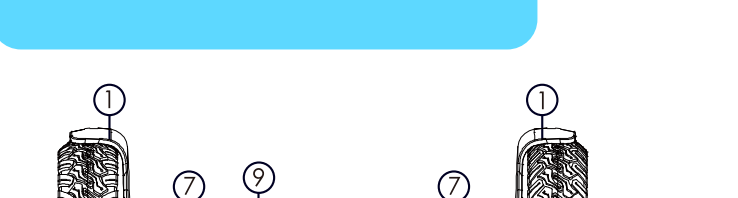
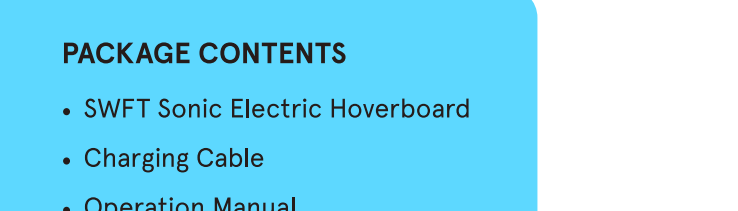
- Check with your doctor before operating the SWFT Sonic to determine if you have a medical condition that would affect your ability to use the SWFT Sonic. Do not operate the SWFT Sonic if you have a medical condition that could impair your ability to safely operate the device.

- If you suffer from neck, head, or back conditions or have had prior surgeries to those areas. It is not recommended that you use the SWFT Sonic.
- Do not operate the SWFT Sonic if you have a heart condition, are pregnant, or both.

- If you have any mental or physical conditions that may make you prone to injury or impair your physical or mental ability to recognize, understand and perform all the safety instructions in this manual, as well as to be able to assume the hazards inherent in use of this device, you should not use the SWFT Sonic Electric Hoverboard.

PACKAGE CONTENTS

- SWFT Sonic Electric Hoverboard
- Charging Cable
- Operation Manual



FEATURES/ PARTS
1. Fender
2. Left Foot Mat
3. Running Indicator
4. Battery Indicator
5. Right Foot Mat
6. Tire
7. LED Light
8. Charge Port (Located in Rear)
9. Power Button (Located in Rear)
10. Wireless Speaker

PRINCIPALS OF OPERATION

The SWFT Sonic uses digital electronic gyroscopes and acceleration sensors to control balance and motion, depending on the user's center of gravity. The device also uses a digital control system to drive motors that are located within the device.

This device has a built-in inertia dynamic stabilization system that can help assist with balance while moving forward and backward, but not while turning.

TIP: To increase your stability, shift your weight to overcome the centrifugal force during turns, especially when entering a turn at high speeds.

SPECIFICATIONS

Model	SWFT Sonic (SWFT-SNC)
Net Weight	23.83 lbs. (10.81 kg)
Load	44-265 lbs. (20-120 kg)
Max Speed	9 mph (14 km/h)
Max Distance Range	Up to 8 miles (13 km)
Max Incline Angle	12°
Minimum Turning Radius	0°
Battery Type	Lithium-Ion
Battery Voltage	36 V
Battery Capacity	4.0 Ah
Motor Power	250Wx2
Wheel Size	10 inches (25.4 cm)
Product size: W x D x H	27.0x40.0x5.11 in / 68.49 x 27.0 x 28.28 cm
Bluetooth Range	Up to 24ft
Bluetooth Speaker	V4.0 with stereo sound quality

CONTROLS AND DISPLAY

TURNING YOUR DEVICE ON/OFF

To Power On:

- Take your SWFT Sonic out of the box and place it flat on the floor.
- Press the power button located on the rear of your device once.
- Check the LED indicator light in the center of your device.
- The battery indicator light should be lit, indicating the SWFT Sonic is powered on.

To Power Off:

- Press the power button once.

This model also has a self-balance function. Generally, the SWFT Sonic will activate the self-balance function when the a not activate the self-balance function, please press the power button twice while the hoverboard is on.

MAT SENSOR

There are four sensors under the foot mats on your SWFT Sonic. When riding the hoverboard, you must ensure you are stepping on the foot mats. Do not step or stand on any other area of your hoverboard.

The SWFT Sonic may vibrate or spin in one direction if weight and pressure are applied to only one foot mat.

BATTERY INDICATOR

The battery indicator LED is on the display board in the middle of the SWFT Sonic.

- Green LED light indicates the hoverboard is fully charged.
- Red flashing LED light and beeping indicates low battery.
- Yellow LED indicates the board is charging.

When the LED light turns red, please recharge the device.

When the operator triggers the foot mats, the running indicator LED will light up, which means that the system has entered the running mode.

If there is an error in the system during operation, the running LED light will turn red for details on system errors see SAFETY ALERTS.

BLUETOOTH SPEAKER

The SWFT Sonic has a powerful built-in wireless speaker. Using the built-in speaker, you can play your music while riding.

PAIRING THE SPEAKER

- Turn on your SWFT Sonic and the speaker will ping to announce that it is waiting for a Bluetooth® connection. This will indicate your SWFT Sonic speaker is now in pairing mode.
- Place the hoverboard and the Bluetooth® device you would like to pair within operating distance (See SPECIFICATIONS for Bluetooth® range limits). We recommend keeping the two devices no further than 3 feet apart during pairing.

LISTENING TO MUSIC

After the SWFT Sonic Bluetooth® speaker has been paired to your device. You can play music through it wirelessly. Only one speaker will play music. The other speaker is strictly for safety alerts from your hoverboard. Select the track you wish to listen to on your music device and you should hear it play from your hoverboard's Bluetooth® speaker. All volume and track controls are made using your music device. Should you encounter any problems while playing music, please refer to your device's user manual.

Please note, pairing mode on the hoverboard will last for two minutes. If no device is paired after two minutes, the hoverboard speaker will automatically return to standby mode.

If pairing is unsuccessful, turn off the hoverboard first and re-pair following steps 1 through 7.

If your smart phone is out of range, or the battery is low on your SWFT Sonic, your speaker may disconnect from your smart device, and the hoverboard will say "Disconnected". Ensure that your hoverboard is recharged and that your smartphone is in range then follow steps 1 - 7 to reconnect.

Practice using these elements of your hoverboard at slower speeds in a flat, open area before taking the device out in public areas.

BEFORE RIDING

It is important that you fully understand all elements of your electric hoverboard before riding. If these elements are not used correctly, you will not have full control of your hoverboard. Before you ride, learn the functions of the various mechanisms on your hoverboard.

Practice using these elements of your hoverboard at slower speeds in a flat, open area before taking the device out in public areas.

Once you have paired the hoverboard speaker with a device, the speaker will remember this device and pair automatically when the device's Bluetooth® is activated and in range. You do not need to re-pair any previously connected devices.

Your hoverboard can pair up to two multi-point devices without going through the pairing or PIN process on up to two devices.

- Ensure the battery is fully charged before riding the hoverboard.
- Please wear all appropriate safety and protective gear as previously mentioned in the user manual before operating your hoverboard.
- Make sure to wear comfortable clothes and flat closed-toe shoes when operating your device.
- Please carefully read the user manual, which will assist in explaining the basic working principles and provide tips on how to best enjoy your experience.

BEFORE RIDING

Ensure that your SWFT Sonic is in proper working order every time you ride. If a part of the hoverboard does not function correctly, please contact our customer support center.

Practice using these elements of your hoverboard at slower speeds in a flat, open area before taking the device out in public areas.

Once you have paired the hoverboard speaker with a device, the speaker will remember this device and pair automatically when the device's Bluetooth® is activated and in range. You do not need to re-pair any previously connected devices.

Your hoverboard can pair up to two multi-point devices without going through the pairing or PIN process on up to two devices.

PAIRING THE SPEAKER

Once you have paired the hoverboard speaker with a device, the speaker will remember this device and pair automatically when the device's Bluetooth® is activated and in range. You do not need to re-pair any previously connected devices.

Your hoverboard can pair up to two multi-point devices without going through the pairing or PIN process on up to two devices.

Once you have paired the hoverboard speaker with a device, the speaker will remember this device and pair automatically when the device's Bluetooth® is activated and in range. You do not need to re-pair any previously connected devices.

Your hoverboard can pair up to two multi-point devices without going through the pairing or PIN process on up to two devices.

Once you have paired the hoverboard speaker with a device, the speaker will remember this device and pair automatically when the device's Bluetooth® is activated and in range. You do not need to re-pair any previously connected devices.

Your hoverboard can pair up to two multi-point devices without going through the pairing or PIN process on up to two devices.

Once you have paired the hoverboard speaker with a device, the speaker will remember this device and pair automatically when the device's Bluetooth® is activated and in range. You do not need to re-pair any previously connected devices.

Your hoverboard can pair up to two multi-point devices without going through the pairing or PIN process on up to two devices.

Once you have paired the hoverboard speaker with a device, the speaker will remember this device and pair automatically when the device's Bluetooth® is activated and in range. You do not need to re-pair any previously connected devices.

Your hoverboard can pair up to two multi-point devices without going through the pairing or PIN process on up to two devices.

Once you have paired the hoverboard speaker with a device, the speaker will remember this device and pair automatically when the device's Bluetooth® is activated and in range. You do not need to re-pair any previously connected devices.

Your hoverboard can pair up to two multi-point devices without going through the pairing or PIN process on up to two devices.

Once you have paired the hoverboard speaker with a device, the speaker will remember this device and pair automatically when the device's Bluetooth® is activated and in range. You do not need to re-pair any previously connected devices.

Your hoverboard can pair up to two multi-point devices without going through the pairing or PIN process on up to two devices.

Once you have paired the hoverboard speaker with a device, the speaker will remember this device and pair automatically when the device's Bluetooth® is activated and in range. You do not need to re-pair any previously connected devices.

Your hoverboard can pair up to two multi-point devices without going through the pairing or PIN process on up to two devices.

Once you have paired the hoverboard speaker with a device, the speaker will remember this device and pair automatically when the device's Bluetooth® is activated and in range. You do not need to re-pair any previously connected devices.

Your hoverboard can pair up to two multi-point devices without going through the pairing or PIN process on up to two devices.

Once you have paired the hoverboard speaker with a device, the speaker will remember this device and pair automatically when the device's Bluetooth® is activated and in range. You do not need to re-pair any previously connected devices.

Your hoverboard can pair up to two multi-point devices without going through the pairing or PIN process on up to two devices.

Once you have paired the hoverboard speaker with a device, the speaker will remember this device and pair automatically when the device's Bluetooth® is activated and in range. You do not need to re-pair any previously connected devices.

Your hoverboard can pair up to two multi-point devices without going through the pairing or PIN process on up to two devices.

Once you have paired the hoverboard speaker with a device, the speaker will remember this device and pair automatically when the device's Bluetooth® is activated and in range. You do not need to re-pair any previously connected devices.

Your hoverboard can pair up to two multi-point devices without going through the pairing or PIN process on up to two devices.

Once you have paired the hoverboard speaker with a device, the speaker will remember this device and pair automatically when the device's Bluetooth® is activated and in range. You do not need to re-pair any previously connected devices.

Your hoverboard can pair up to two multi-point devices without going through the pairing or PIN process on up to two devices.

Once you have paired the hoverboard speaker with a device, the speaker will remember this device and pair automatically when the device's Bluetooth® is activated and in range. You do not need to re-pair any previously connected devices.

Your hoverboard can pair up to two multi-point devices without going through the pairing or PIN process on up to two devices.

Once you have paired the hoverboard speaker with a device, the speaker will remember this device and pair automatically when the device's Bluetooth® is activated and in range. You do not need to re-pair any previously connected devices.

Your hoverboard can pair up to two multi-point devices without going through the pairing or PIN process on up to two devices.

Once you have paired the hoverboard speaker with a device, the speaker will remember this device and pair automatically when the device's Bluetooth® is activated and in range. You do not need to re-pair any previously connected devices.

Your hoverboard can pair up to two multi-point devices without going through the pairing or PIN process on up to two devices.

Once you have paired the hoverboard speaker with a device, the speaker will remember this device and pair automatically when the device's Bluetooth® is activated and in range. You do not need to re-pair any previously connected devices.

Your hoverboard can pair up to two multi-point devices without going through the pairing or PIN process on up to two devices.

Once you have paired the hoverboard speaker with a device, the speaker will remember this device and pair automatically when the device's Bluetooth® is activated and in range. You do not need to re-pair any previously connected devices.

Your hoverboard can pair up to two multi-point devices without going through the pairing or PIN process on up to two devices.

Once you have paired the hoverboard speaker with a device, the speaker will remember this device and pair automatically when the device's Bluetooth® is activated and in range. You do not need to re-pair any previously connected devices.

Your hoverboard can pair up to two multi-point devices without going through the pairing or PIN process on up to two devices.

Once you have paired the hoverboard speaker with a device, the speaker will remember this device and pair automatically when the device's Bluetooth® is activated and in range. You do not need to re-pair any previously connected devices.

Your hoverboard can pair up to two multi-point devices without going through the pairing or PIN process on up to two devices.

Once you have paired the hoverboard speaker with a device, the speaker will remember this device and pair automatically when the device's Bluetooth® is activated and in range. You do not need to re-pair any previously connected devices.

Your hoverboard can pair up to two multi-point devices without going through the pairing or PIN process on up to two devices.

Once you have paired the hoverboard speaker with a device, the speaker will remember this device and pair automatically when the device's Bluetooth® is activated and in range. You do not need to re-pair any previously connected devices.

Your hoverboard can pair up to two multi-point devices without going through the pairing or PIN process on up to two devices.

Once you have paired the hoverboard speaker with a device, the speaker will remember this device and pair automatically when the device's Bluetooth® is activated and in range. You do not need to re-pair any previously connected devices.

Your hoverboard can pair up to two multi-point devices without going through the pairing or PIN process on up to two devices.

Once you have paired the hoverboard speaker with a device, the speaker will remember this device and pair automatically when the device's Bluetooth® is activated and in range. You do not need to re-pair any previously connected devices.

Your hoverboard can pair up to two multi-point devices without going through the pairing or PIN process on up to two devices.

Once you have paired the hoverboard speaker with a device, the speaker will remember this device and pair automatically when the device's Bluetooth® is activated and in range. You do not need to re-pair any previously connected devices.

Your hoverboard can pair up to two multi-point devices without going through the pairing or PIN process on up to two devices.

Once you have paired the hoverboard speaker with a device, the speaker will remember this device and pair automatically when the device's Bluetooth® is activated and in range. You do not need to re-pair any previously connected devices.

Your hoverboard can pair up to two multi-point devices without going through the pairing or PIN process on up to two devices.

Once you have paired the hoverboard speaker with a device, the speaker will remember this device and pair automatically when the device's Bluetooth® is activated and in range. You do not need to re-pair any previously connected devices.

Your hoverboard can pair up to two multi-point devices without going through the pairing or PIN process on up to two devices.

Once you have paired the hoverboard speaker with a device, the speaker will remember this device and pair automatically when the device's Bluetooth® is activated and in range. You do not need to re-pair any previously connected devices.

Your hoverboard can pair up to two multi-point devices without going through the pairing or PIN process on up to two devices.

Once you have paired the hoverboard speaker with a device, the speaker will remember this device and pair automatically when the device's Bluetooth® is activated and in range. You do not need to re-pair any previously connected devices.

Your hoverboard can pair up to two multi-point devices without going through the pairing or PIN process on up to two devices.

Once you have paired the hoverboard speaker with a device, the speaker will remember this device and pair automatically when the device's Bluetooth® is activated and in range. You do not need to re-pair any previously connected devices.

Your hoverboard can pair up to two multi-point devices without going through the pairing or PIN process on up to two devices.

Once you have paired the hoverboard speaker with a device, the speaker will remember this device and pair automatically when the device's Bluetooth® is activated and in range. You do not need to re-pair any previously connected devices.

Your hoverboard can pair up to two multi-point devices without going through the pairing or PIN process on up to two devices.

Once you have paired the hoverboard speaker with a device, the speaker will remember this device and pair automatically when the device's Bluetooth® is activated and in range. You do not need to re-pair any previously connected devices.

Your hoverboard can pair up to two multi-point devices without going through the pairing or PIN process on up to two devices.

Once you have paired the hoverboard speaker with a device, the speaker will remember this device and pair automatically when the device's Bluetooth® is activated and in range. You do not need to re-pair any previously connected devices.

Your hoverboard can pair up to two multi-point devices without going through the pairing or PIN process on up to two devices.

Once you have paired the hoverboard speaker with a device, the speaker will remember this device and pair automatically when the device's Bluetooth® is activated and in range. You do not need to re-pair any previously connected devices.

Your hoverboard can pair up to two multi-point devices without going through the pairing or PIN process on up to two devices.

Once you have paired the hoverboard speaker with a device, the speaker will remember this device and pair automatically when the device's Bluetooth® is activated and in range. You do not need to re-pair any previously connected devices.

Your hoverboard can pair up to two multi-point devices without going through the pairing or PIN process on up to two devices.

Once you have paired the hoverboard speaker with a device, the speaker will remember this device and pair automatically when the device's Bluetooth® is activated and in range. You do not need to re-pair any previously connected devices.

Your hoverboard can pair up to two multi-point devices without going through the pairing or PIN process on up to two devices.

Once you have paired the hoverboard speaker with a device, the speaker will remember this device and pair automatically when the device's Bluetooth® is activated and in range. You do not need to re-pair any previously connected devices.

Your hoverboard can pair up to two multi-point devices without going through the pairing or PIN process on up to two devices.

Once you have paired the hoverboard speaker with a device, the speaker will remember this device and pair automatically when the device's Bluetooth® is activated and in range. You do not need to re-pair any previously connected devices.

Your hoverboard can pair up to two multi-point devices without going through the pairing or PIN process on up to two devices.

Once you have paired the hoverboard speaker with a device, the speaker will remember this device and pair automatically when the device's Bluetooth® is activated and in range. You do not need to re-pair any previously connected devices.

Your hoverboard can pair up to two multi-point devices without going through the pairing or PIN process on up to two devices.

Once you have paired the hoverboard speaker with a device, the speaker will remember this device and pair automatically when the device's Bluetooth® is activated and in range. You do not need to re-pair any previously connected devices.

Your hoverboard can pair up to two multi-point devices without going through the pairing or PIN process on up to two devices.

Once you have paired the hoverboard speaker with a device, the speaker will remember this device and pair automatically when the device's Bluetooth® is activated and in range. You do not need to re-pair any previously connected devices.

Your hoverboard can pair up to two multi-point devices without going through the pairing or PIN process on up to two devices.

Once you have paired the hoverboard speaker with a device, the speaker will remember this device and pair automatically when the device's Bluetooth® is activated and in range. You do not need to re-pair any previously connected devices.

Your hoverboard can pair up to two multi-point devices without going through the pairing or PIN process on up to two devices.

Once you have paired the hoverboard speaker with a device, the speaker will remember this device and pair automatically when the device's Bluetooth® is activated and in range. You do not need to re-pair any previously connected devices.

Your hoverboard can pair up to two multi-point devices without going through the pairing or PIN process on up to two devices.

Once you have paired the hoverboard speaker with a device, the speaker will remember this device and pair automatically when the device's Bluetooth® is activated and in range. You do not need to re-pair any previously connected devices.

Your hoverboard can pair up to two multi-point devices without going through the pairing or PIN process on up to two devices.

Once you have paired the hoverboard speaker with a device, the speaker will remember this device and pair automatically when the device's Bluetooth® is activated and in range. You do not need to re-pair any previously connected devices.

Your hoverboard can pair up to two multi-point devices without going through the pairing or PIN process on up to two devices.

Once you have paired the hoverboard speaker with a device, the speaker will remember this device and pair automatically when the device's Bluetooth® is activated and in range. You do not need to re-pair any previously connected devices.

Your hoverboard can pair up to two multi-point devices without going through the pairing or PIN process on up to two devices.

Once you have paired the hoverboard speaker with a device, the speaker will remember this device and pair automatically when the device's Bluetooth® is activated and in range. You do not need to re-pair any previously connected devices.

Your hoverboard can pair up to two multi-point devices without going through the pairing or PIN process on up to two devices.

Once you have paired the hoverboard speaker with a device, the speaker will remember this device and pair automatically when the device's Bluetooth® is activated and in range. You do not need to re-pair any previously connected devices.

Your hoverboard can pair up to two multi-point devices without going through the pairing or PIN process on up to two devices.

Once you have paired the hoverboard speaker with a device, the speaker will remember this device and pair automatically when the device's Bluetooth® is activated and in range. You do not need to re-pair any previously connected devices.

Your hoverboard can pair up to two multi-point devices without going through the pairing or PIN process on up to two devices.

Once you have paired the hoverboard speaker with a device, the speaker will remember this device and pair automatically when the device's Bluetooth® is activated and in range. You do not need to re-pair any previously connected devices.

Your hoverboard can pair up