

# SmartESL User Manual



findbox GmbH

13.7.2016

All information subject to change without notice.  
© 2016 copyright findbox GmbH. All rights reserved.

This manual may not, in whole or in part, be copied, photocopied, reproduced, translated, or converted to any written, electronic or machine readable form without prior written consent of findbox GmbH.

## Contents

1. Basic SmartESL Features .....	2
2. Technical Details .....	3
3. Safety Instructions .....	4
4. Basic Comissioning .....	5
5. FCC Statement .....	10
6. Support .....	11

## 1. Basic SmartESL Features

An elegant design and the 3-color display in conjunction with the LED flashing possibility characterize the newest Generation of SmartESL. The E-Ink Dot Matrix Display has an optimal resolution to grant the best legibility even in difficult light conditions. The SmartESL can optionally be equipped with an active NFC chip. Controlled by 868Mhz in Europe and 915Mhz in North America, the SmartESLs react in within just 1 second to price changes or flashing commands.



With SmartESL 2.2, 2.7, 4.2 and 7.5 from a huge variety of sizes the best size can be chosen.

The SmartESL Accesspoint is the perfect out of the box solution to setup an ESL system in only a few minutes. Preinstalled with fbOS the box helps you with the comissioning of your ESL system. It's that easy!



## 2. Technical Details

### SmartESL:

Display Technology:	e-ink epaper
Display Colors:	black/white or black/white/red
Viewing Angle:	~180°
Radio Frequency:	915 MHZ
Battery Runtime:	up to 5 years (extended variant up to 7.5 years)
Battery:	replaceable coin cells
Page Memory:	2 (optional up to 20)
NFC:	optional available
Operating Temperature:	0 - 40 °C (b/w)
Encryption:	128bit Secure AES
OTA Firmware Update:	yes
Standards:	CE, FCC

### SmartESL Accesspoint:

Dimensions:	90 x 90 x 46 mm
CPU:	ARM 64 Bit SOC
RAM:	1GB
HDD:	16GB SD Card
Networking:	1 * 100Mbit LAN
USB:	4x USB 2.0
Monitor:	HDMI
Operating Temperature:	0-40 °C
Standards:	CE, FCC

## 3. Safety Instructions

### Shock

- Do not throw or drop the devices.

### Temperature Conditions

- Do not use the devices at temperatures outside the specified range.
- Do not pour boiling water on the devices.
- Do not throw the devices into the fire.
- Do not forcibly bend the cable at low temperatures.

### Foreign Materials

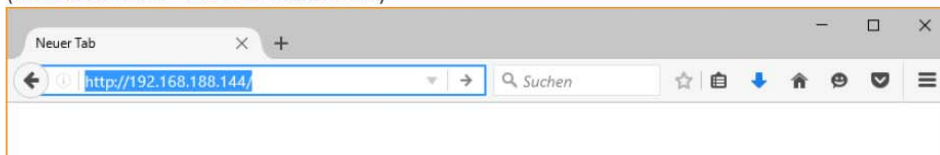
- Do not immerse the devices in liquids.
- Do not subject the devices to chemicals.

### Other

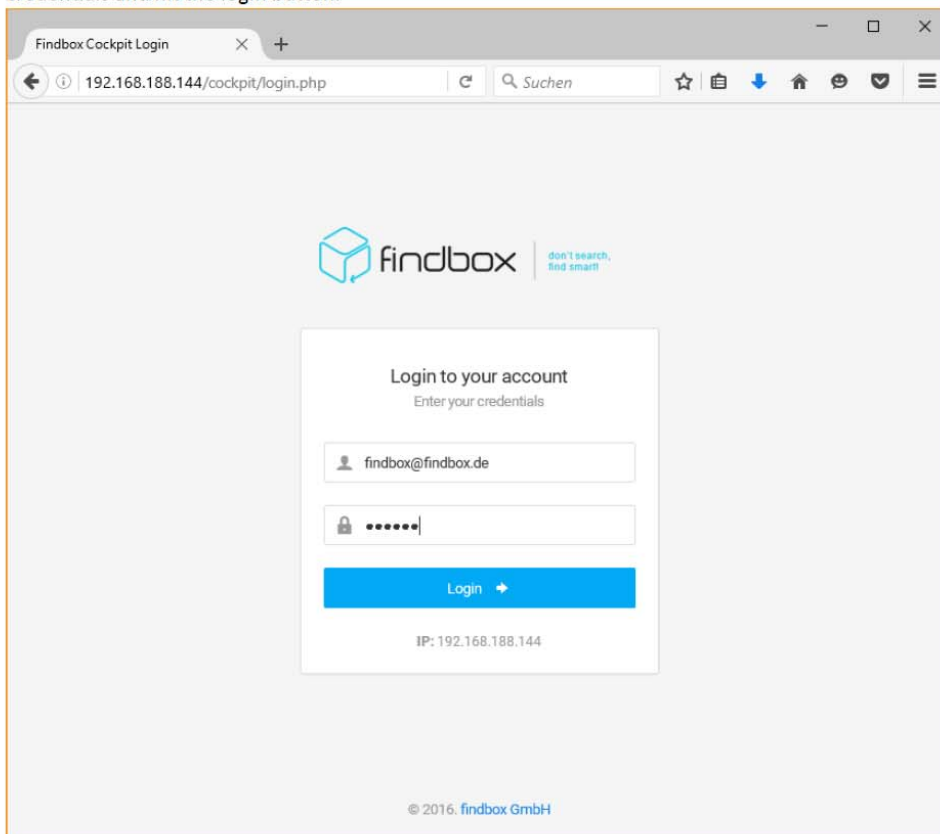
- Do not disassemble this product.
- The device may be damaged by power surges.

## 4. Basic Commissioning

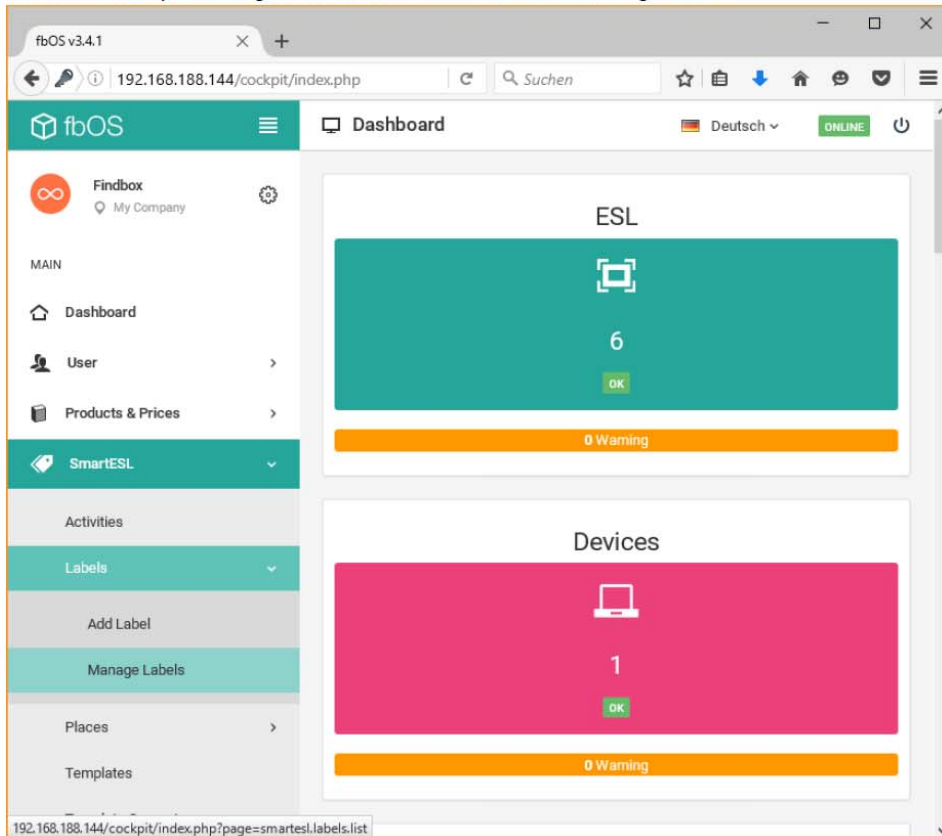
1. To setup the ESL environment power up the SmartESL Accesspoint with the the supplied power supply and connect the box via Ethernet to your network. The SmartESL Accesspoint is by default configured to obtain an IP address via DHCP. For the next step you have to look up this address in your DHCP gateway.
2. Go to your browser and type in the IP address of the SmartESL Accesspoint like this:  
(Mozilla Firefox >= v45 is recommended)



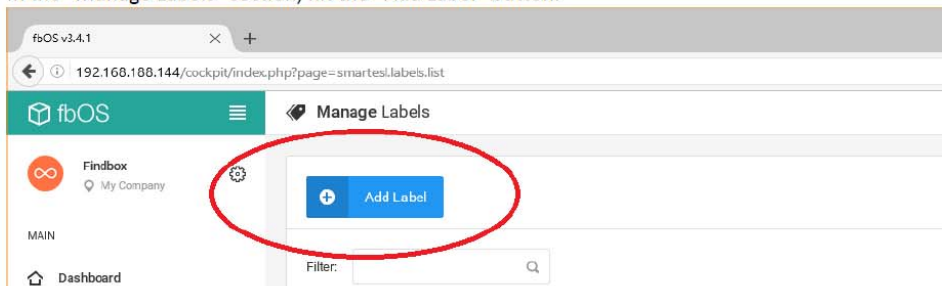
3. If the IP address is correct, the login page of the Findbox Cockpit is shown. Enter your default credentials and hit the login button.



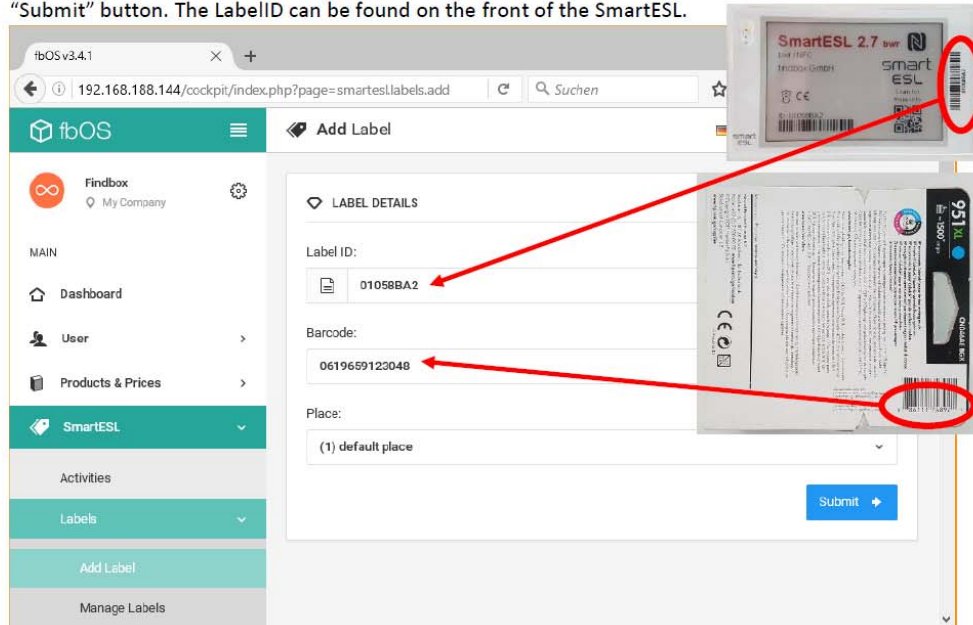
4. If correct login credentials are used, the Dashboard is shown. To bind a SmartESL to the SmartESL Accesspoint navigate to “SmartESL” → “Labels” → “Manage Labels”:



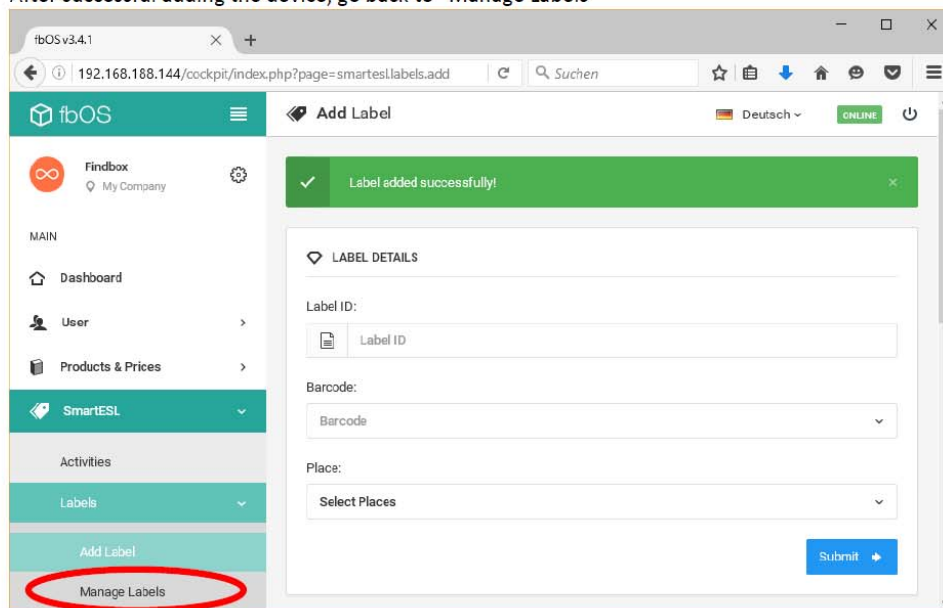
5. In the “Manage Labels” section, hit the “Add Label” button.



- Enter the LabelID and the barcode of the matching product into the form fields and hit the "Submit" button. The LabelID can be found on the front of the SmartESL.

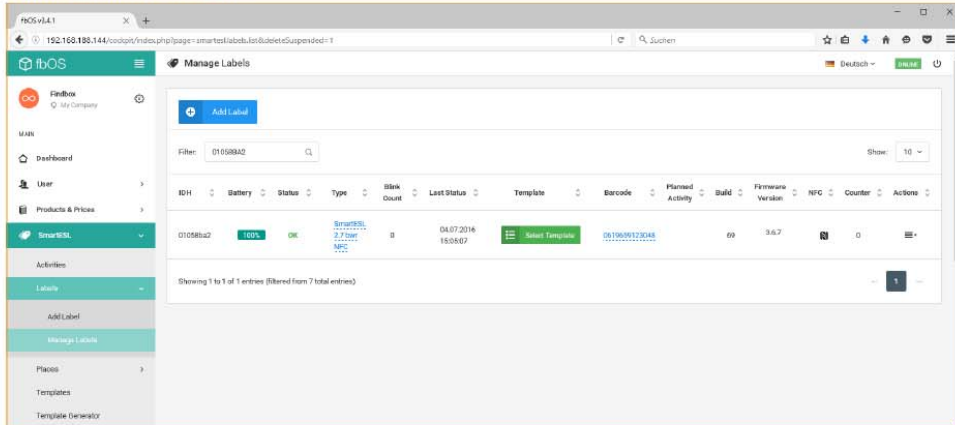


- After successful adding the device, go back to "Manage Labels"

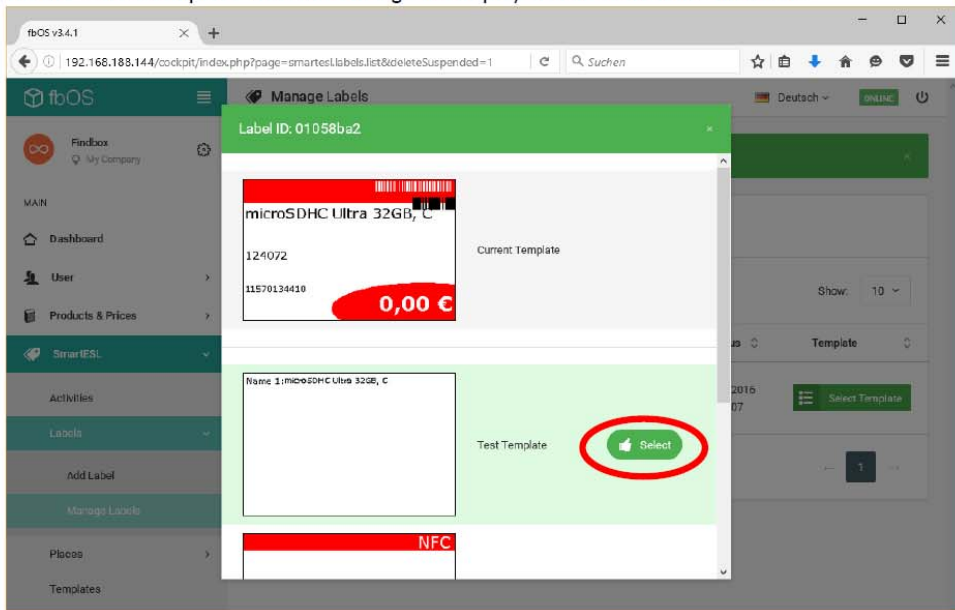




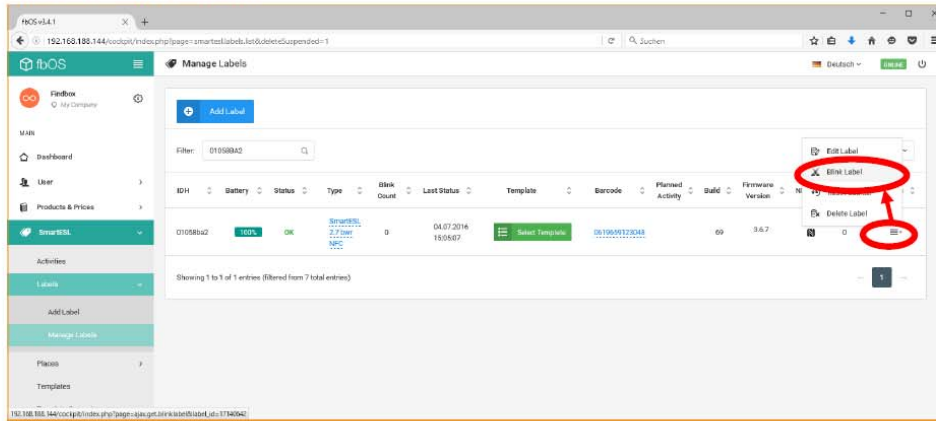
- Back in the “Manage Labels” section, the correct SmartESL can be identified by using the LabelID filter mechanism.



- Hit the “Select Template” button to change the display visualization of the SmartESL:



10. To let the SmartESL flash the LED, use the “Blink Label” button. It can be found when hit the three bar “Actions” button:



## 5. FCC Statement

1. The SmartESL and SmartESL Accesspoint devices comply with Part 15 of the FCC Rules. Operation is subject to the following two conditions:
  - (1) These devices may not cause harmful interference, and
  - (2) These devices must accept any interference received, including interference that may cause undesired operation
2. Changes or modifications not expressly approved by the party responsible for compliance could void the user's authority to operate the equipment.

### NOTE:

This equipment has been tested and found to comply with the limits for a Class B digital, pursuant to Part 15 of the FCC Rules. These limits are designed to provide reasonable protection against harmful interference in a residential installation. This equipment generates, uses and can radiate radio frequency energy and, if not installed and used in accordance with the instructions, may cause harmful interference to radio communications. However, there is no guarantee that interference will not occur in a particular installation.

If the equipment does cause harmful interference to radio or television reception, which can be determined by turning the equipment off and on, the user is encouraged to try to correct the interference by one or more of the following measures:

- Reorient or relocate the receiving antenna.
- Increase the separation between the equipment and receiver.
- Connect the equipment into an outlet on a circuit different from that to which the receiver is connected.
- Consult the dealer or an experienced radio/ TV technician for help.

### FCC Radiation Exposure Statement:

This equipment complies with FCC radiation exposure limits set forth for an uncontrolled environment. In order to avoid the possibility of exceeding the FCC radio frequency exposure limits, Human proximity to the antenna shall not be less than 20cm (8 inches) during normal operation.

## 6. Support

For further information regarding the SmartESL and SmartESL Accesspoint please contact us:

Bundesstraße 16  
77955 Ettenheim  
DE - Germany

Email: [info@findbox.de](mailto:info@findbox.de)  
Phone: +49 (0) 7822 861996 0  
Fax: +49 (0) 7822 861996 19