

WiFi Smart Devices

User Manual



Setting Febite Smart APP

Download or scan the QR code and install the Febite smart APP for iOS or Android.

Once download or scan the QR code, the app will ask you to register your device. Enter your phone number or email which ever one makes you feel comfortable and select the country you live in. If phone number selected you will receive a text with a registration code, If you choose email you will then create a password.



Scan QR Code
Download Free App



Input the Registration Code you received via text if phone method used or create password if email method chosen.



1

Adding a New Device in Quick Connection

- * Make sure the Wi-Fi smart device is standby (the blue light button flash is 2 times per second if the smart device is plug or switch) after plug in the socket . otherwise, you should press the power button keep to 6 seconds to reset the device. (for plug or switch). Bulb should be turned on/off the power in 3 times continuously.
- The smart Wi-Fi devices only supports 2.4GHz Wi-Fi router.
- * Open app and click to add device.
- * Select Wi-Fi network, input Wi-Fi password, Connect and click.
- * Once connected the app will prompt the connection, and click ok



2



Adding a New Device in AP mode

- * Make sure the Wi-Fi device is standby (the blue light button of Wi-Fi device flashes in 1 times in 2 seconds) after plug in the socket.
- * Press in the main menu of app.
- * Click AP mode and press next step in Add device.
- * Select Wi-Fi and input Wi-Fi password, press Next in Set up Wi-Fi for device.
- * Press Connect now.
- * Go to WLAN setting in your smart phone and select the smartLife xxx for your WiFi, no need to input password once you select the smartLife xxx (you can directly to connect it if your OS is Android).
- * Go back to app and press connect device name is smartLifexxx and confirm device.



3



FAQ

1. Please check whether device is powered on;
2. Whether phone is connected via Wi-Fi;
3. Whether device is ready for configuration. To get the device ready before configuration, normally you can manually press on the device to get it ready. Please refer to product instruction Device Reset Instruction for details.
Notice Each time to add device, reset Wi-Fi to get Device ready for configuration and make sure router is working properly.
4. Check routers or related: If router is dual-band router, select 2.4GHz network and add device. you also need to enable router broadcasting function.
Set up wireless router: Set encryption method as WPA2-PSK and authorization type as AES, or set both as auto. Wireless mode cannot be 11n only. Don't use Chinese to name router Wi-Fi. To stay Strong Wi-Fi signal, please keep device and router within certain distance.
Whether connected devices have reached the Maximum number of router connection. If so, please try by turning off the Wi-Fi connection of some device.
Router wireless MAC filtering function is enabled. Remove the device from the filter list and make sure that router is not prohibiting device from connection.
5. Make sure the password entered is APP is correct when adding new device.

4

Setting Alexa App

1. Open Alexa app and click the button **Home**, then click **Skills**. (As below highlighted).



5

2. Input Febite to search all column, click search **Q**. (See below highlighted)



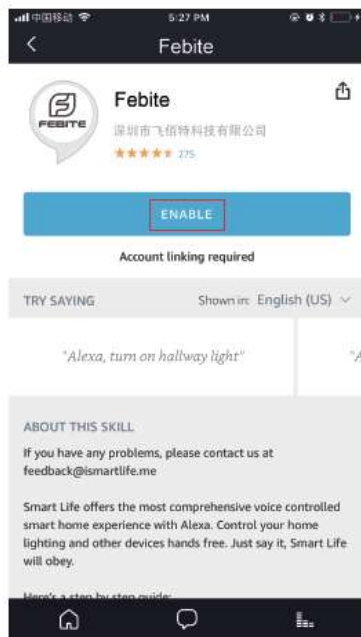
6

3. Click 'Febite' **Febite** and Enter.



7

4, Click **ENABLE**.




8

5, Select your country , input your FebiteApp account and password which you have registered.(Attention: this is not the account and password of Alexa App). Click **Link Now**.



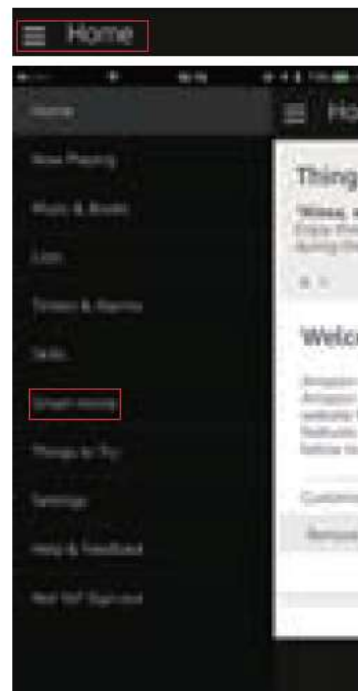
9

6, Setting finished, click close .



10

7, Back to Menu, click , and then click **Smart Home**.



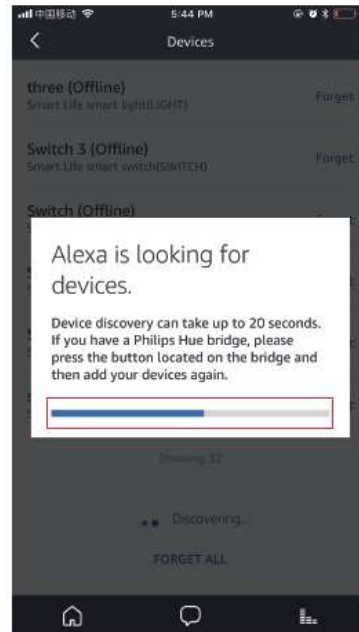
11

8, Click "Devices".



12

9, Scroll Down to BOTTOM, click **DISCOVER** to search. Search to device



13

10, Find device . Also, you can create a group to control these devices together.



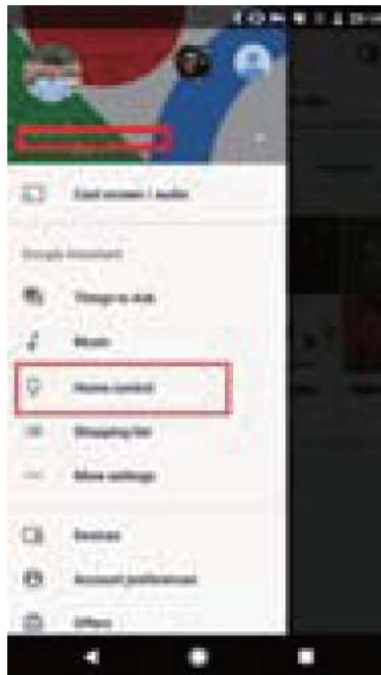
14

Using Google Home to control smart devices



15

1. Tap "Home Control" in the hamburger menu on the Google Home app's home page.



16

2. Then tap "+".



17

3. Find Febite in the list.



18

4. In the new window, select your Febite account's region, type your Febite account and password, then tap "Link Now".



19

5. After you assign rooms for devices .



20

6. Your devices will be listed in the Home Control page.



21

Alexa Skills:

Now, you can use Echo to control two different smart plugs. Like Alexa, turn on the living room/Alexa, turn on the dining room. Alexa will turn on different devices separately. When you say Alexa, turn off the living room/Alexa, turn off the dining room. Alexa will turn off the different devices separately.

Google Assistant:

Now you can control your smart devices through Google Home. Take bedroom light as the example, the supported voice commands are as below:

Ok Google, turn on/off bedroom light.
Ok Google, brighten bedroom light.
Ok Google, dim bedroom light.
Ok Google, set bedroom light to red.

22

FCC Radiation Exposure Statement:

This equipment complies with FCC radiation exposure limits set forth for an uncontrolled environment. This equipment should be installed and operated with minimum distance 20cm between the radiator & your body.

FCC Warning

This device complies with Part 15 of the FCC Rules. Operation is subject to the following two conditions:

(1) This device may not cause harmful interference, and (2) this device must accept any interference received, including interference that may cause undesired operation.

23

<p>NOTE 1: This equipment has been tested and found to comply with the limits for a Class B digital device, pursuant to part 15 of the FCC Rules. These limits are designed to provide reasonable protection against harmful interference in a residential installation. This equipment generates, uses and can radiate radio frequency energy and, if not installed and used in accordance with the instructions, may cause harmful interference to radio communications. However, there is no guarantee that interference will not occur in a particular installation. If this equipment does cause harmful interference to radio or television reception, which can be determined by turning the equipment off and on, the user is encouraged to try to correct the interference by one or more of the following measures:</p> <ul style="list-style-type: none"> - Reorient or relocate the receiving antenna. <p style="text-align: center;">24</p>	<ul style="list-style-type: none"> - Increase the separation between the equipment and receiver. -Connect the equipment into an outlet on a circuit different from that to which the receiver is connected. -Consult the dealer or an experienced radio/TV technician for help. <p>NOTE 2: Any changes or modifications to this unit not expressly approved by the party responsible for compliance could void the user's authority to operate the equipment.</p> <p style="text-align: center;">25</p>
--	---