

User's Manual

Wireless headset

Safety Instructions

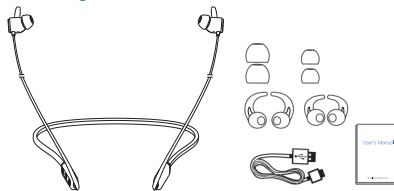
- 1 Avoid dropping.
- 2 Do not disassemble.
- 3 Keep out of reach of children. It contains small parts, which may be a choking hazard.
- 4 Do not submerge in water.
- 5 Avoid extreme temperatures.
- 6 Do not use the device outdoors during a thunderstorm.
- 7 Use original or certified cables.
- 8 Do not use any corrosive cleaner/oil to clean.

Hearing Safety

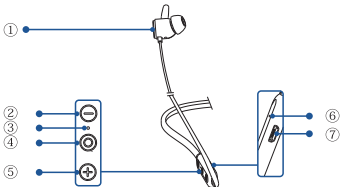


- 1 To avoid hearing damage, do not listen for extended periods at high volume.
- 2 Do not turn the volume so high that you're unable to hear your surroundings.
- 3 Do not use earphones while driving.
- 4 You should use caution or temporarily discontinue use in potentially hazardous situations.

Packing list



Function



1 Magnetic heads	5 Volume up button
2 Volume down button	6 Microphone
3 LED indicator	7 Micro USB charging port
4 Multi-function button	

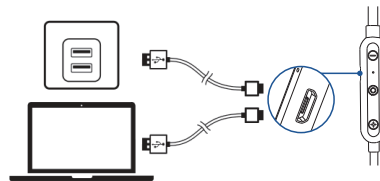
Using Your Earphones

1. Turn on / off

3s ON	Flashing blue once
3s OFF	Flashing red once

Earphones will automatically turn off after 2 minutes if no device is connected.

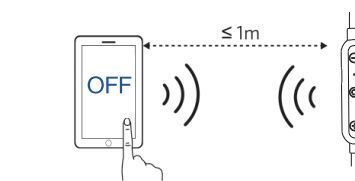
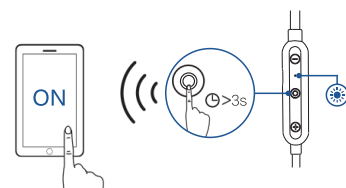
2. Charge



Flashing red	Low battery
Steady red	Charging
Steady blue	Fully charged

Use the included USB cable to charge your Earphones. Make sure they are fully charged before first use.
To preserve battery lifespan, fully charge at least once every 45 days.

3. Pair with your device

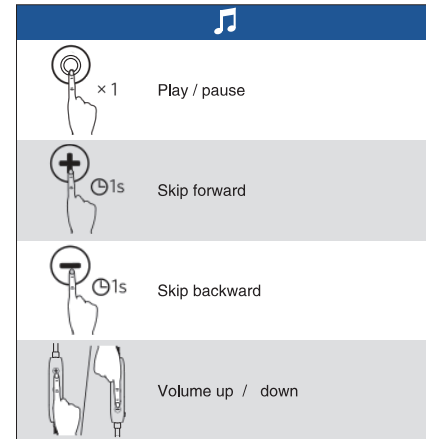


3s	Enter pairing mode
>3s	Un-pair connected device and re-enter pairing mode

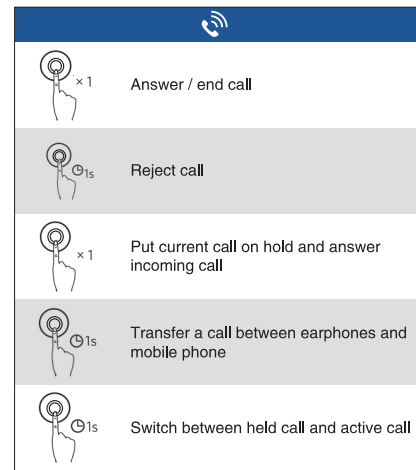
Rapidly flashing blue	Pairing mode
Steady blue	Connected to a device

When turned on, Earphones will automatically connect to the last connected device if available. If not, Earphones will enter pairing mode.

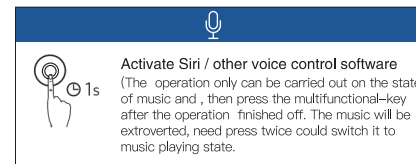
4. Controls



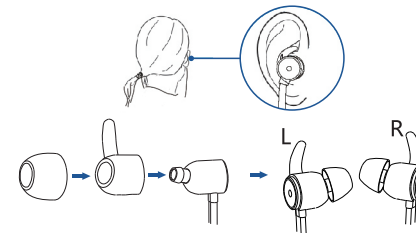
When there is an incoming call while playing music, music automatically pauses to allow you to answer/reject the call. Once the call is ignored or ended, the music resumes.



	Steady blue	On a call
	Flashing blue	Incoming call



5. Wear your Earphones



Specifications

Specifications are subject to change without notice.

Input	5 V 0.1 A
Charging time	1.5 hours
Play time (varies by volume level and content)	10 hours
Battery capacity	110 mAh
Waterproof rating	IPX5
Weight	16 g / 0.56 oz
Impedance	16Ω
Driver (full range)	8 mm × 2
Frequency response	20 Hz - 20 KHz

Wireless version	V4.1
Range	10 m / 33 ft

Notice

This product is designed and manufactured with high quality materials and components, which can be recycled and reused.

This product complies with the radio interference requirements of the European Community.

This symbol means the product must not be discarded as household waste, and should be delivered to an appropriate collection facility for recycling.

Proper disposal and recycling helps protect natural resources, human health and the environment. For more information on disposal and recycling of this product, contact your local municipality, disposal service, or the shop where you bought this product.

FCC Statement

This device complies with Part 15 of the FCC Rules. Operation is subject to the following two conditions: (1) This device may not cause harmful interference, and (2) this device must accept any interference received, including interference that may cause undesired operation.

Warning: Changes or modifications not expressly approved by the party responsible for compliance could void the user's authority to operate the equipment.

Note: This equipment has been tested and found to comply with the limits for a Class B digital device, pursuant to Part 15 of the FCC Rules. These limits are designed to provide reasonable protection against harmful interference in a residential installation.

This equipment generates uses and can radiate radio frequency energy and, if not installed and used in accordance with the instructions, may cause harmful interference to radio communications. However, there is no guarantee that interference will not occur in a particular installation. If this equipment does cause harmful interference to radio or television reception, which can be determined by turning the equipment off and on, the user is encouraged to try to correct the interference by one or more of the following measures:

- (1) Reorient or relocate the receiving antenna.
- (2) Increase the separation between the equipment and receiver.
- (3) Connect the equipment into an outlet on a circuit different from that to which the receiver is connected.
- (4) Consult the dealer or an experienced radio / TV technician for help.