

Model Differences Declaration

Date: Nov. 6, 2024

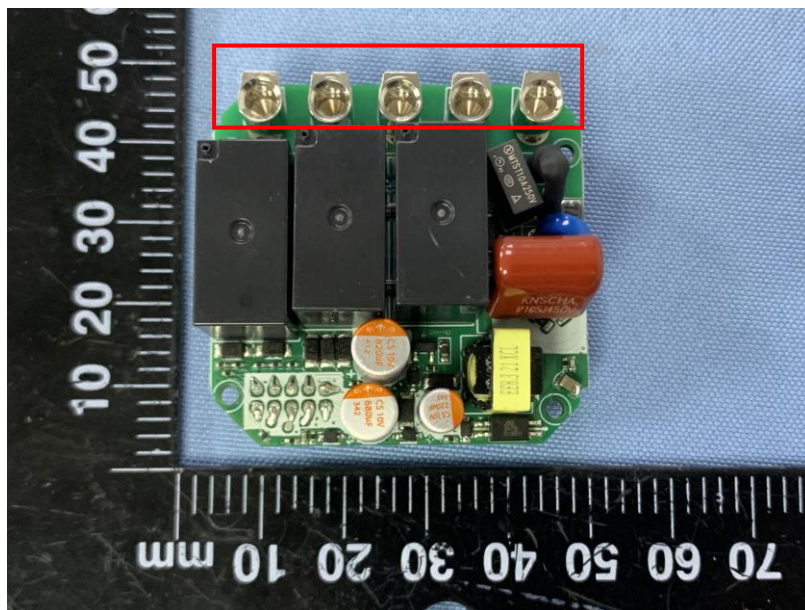
Product Name: Zigbee Smart Wall Switch

Model Number: ZBM5-3C-120W, ZBM5-2C-120W, ZBM5-1C-120W,
ZBM5-3C-120, ZBM5-2C-120, ZBM5-1C-120

We Shenzhen Sonoff Technologies Co.,Ltd. hereby state that all the models are electrical identical including the same software parameter and hardware design (i.e., circuit design, PCB Layout, RF module/circuit, antenna type, components on PCB, etc.), same mechanical structure and design (including product enclosure, materials, etc.). The difference is the number of output terminals, the number of relays, and the color of the shell.

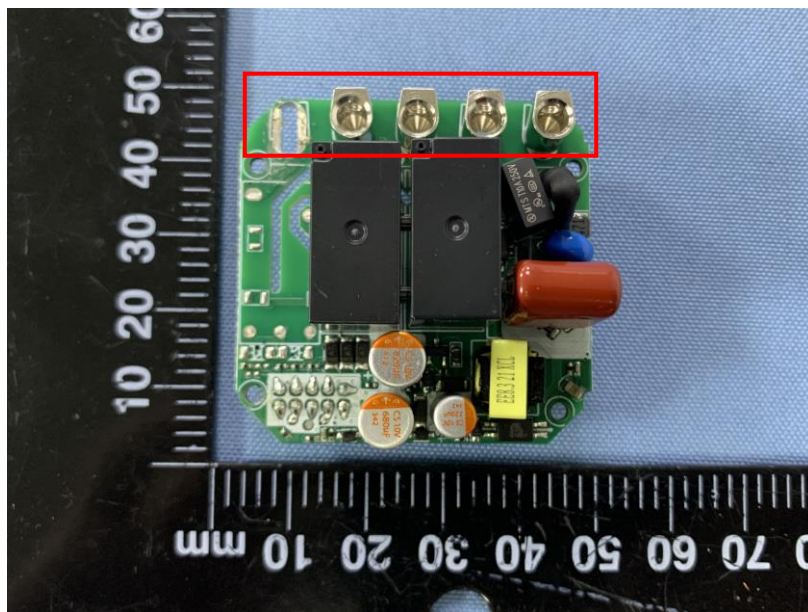
Model Number	Item Difference 1	Item Difference 2	Item Difference 3
ZBM5-3C-120W	Output terminal: 3	Relays number: 3	Shell color: white
ZBM5-2C-120W	Output terminal: 2	Relays number: 2	Shell color: white
ZBM5-1C-120W	Output terminal: 1	Relays number: 1	Shell color: white
ZBM5-3C-120	Output terminal: 3	Relays number: 3	Shell color: dark gray
ZBM5-2C-120	Output terminal: 2	Relays number: 2	Shell color: dark gray
ZBM5-1C-120	Output terminal: 1	Relays number: 1	Shell color: dark gray

Item Difference 1: ZBM5-3C-120W, ZBM5-3C-120

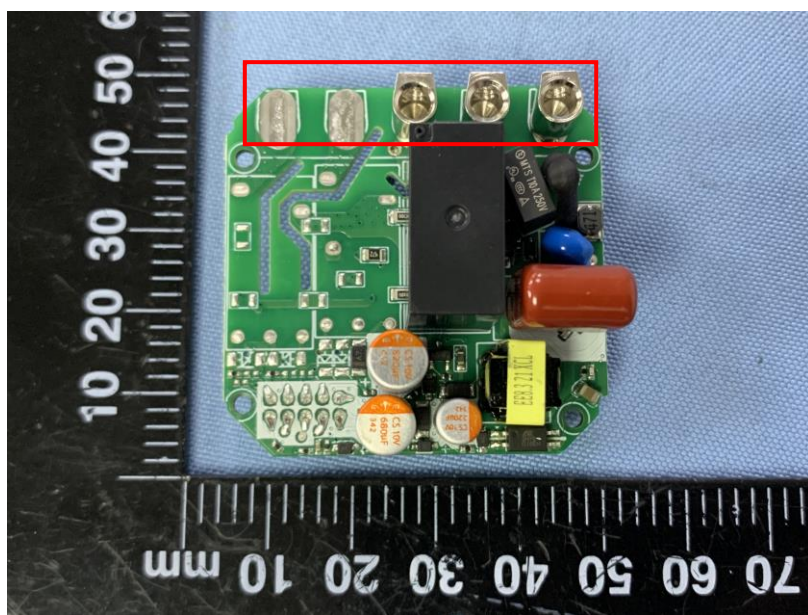


Shenzhen Sonoff Technologies Co.,Ltd.

Item Difference 1: ZBM5-2C-120W, ZBM5-2C-120

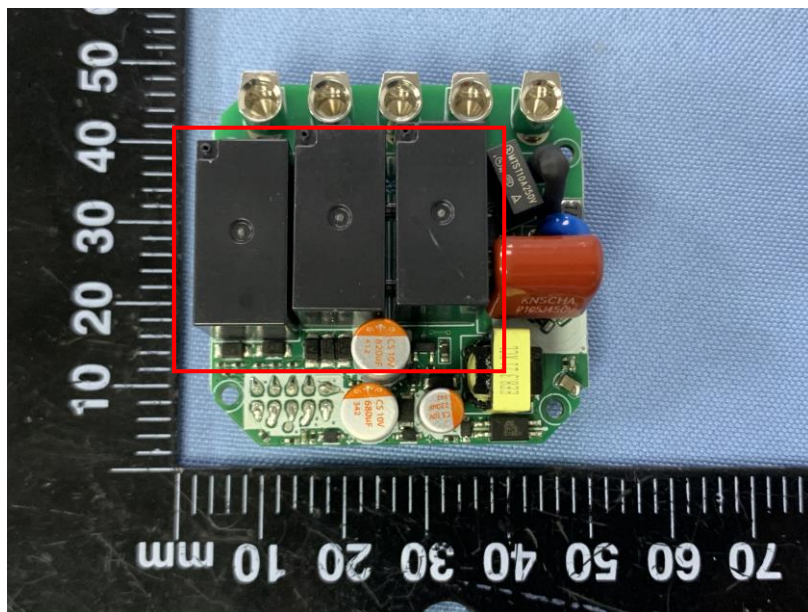


Item Difference 1: ZBM5-1C-120W, ZBM5-1C-120

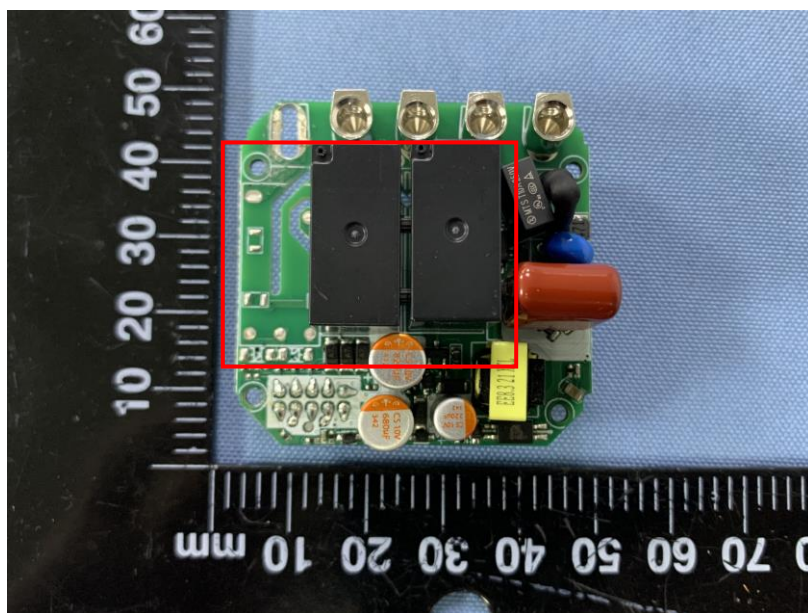


Shenzhen Sonoff Technologies Co.,Ltd.

Item Difference 2: ZBM5-3C-120W, ZBM5-3C-120

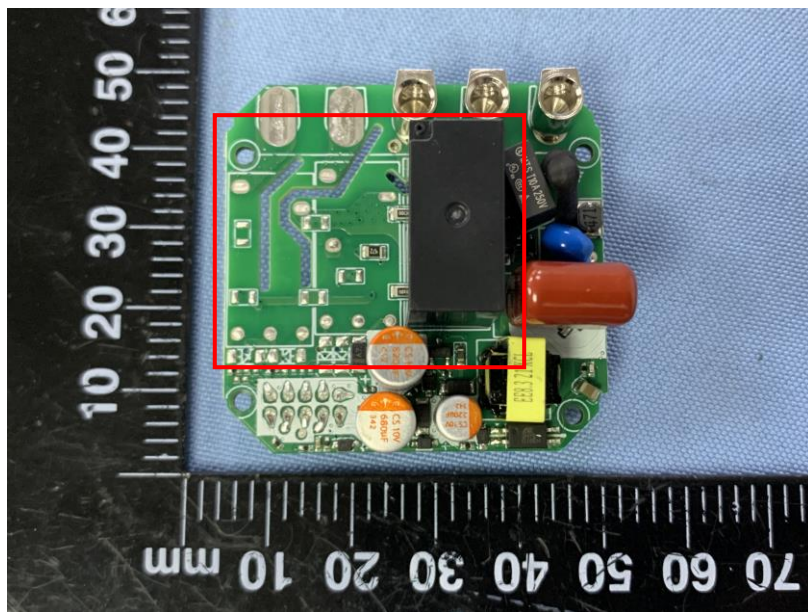


Item Difference 2: ZBM5-2C-120W, ZBM5-2C-120



Shenzhen Sonoff Technologies Co.,Ltd.

Item Difference 2: ZBM5-1C-120W, ZBM5-1C-120



Sincerely,

Signature: *Stan Li*

Name: Stan Li

Title: Manager