

## antenna SPECIFICATION

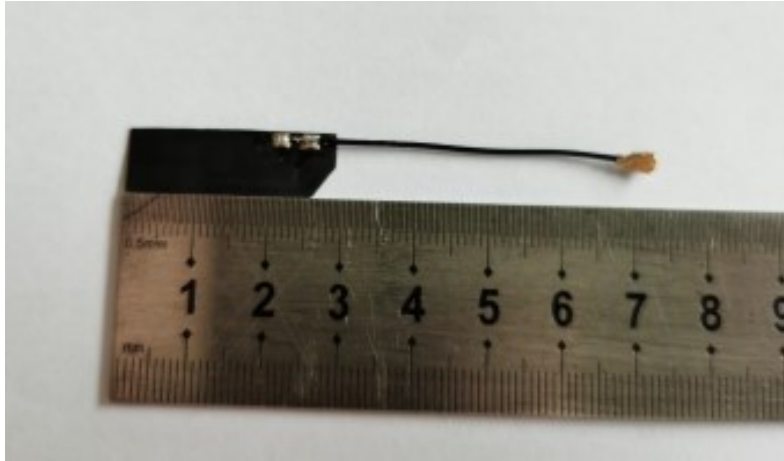
Product description: 2.4G FPC Antenna  
Uni Link's part number: ANTENNA-2400  
Issue Date: 2022-03-06  
Note: 2400-2500MHZ

### 1、 (PRODUCT TECHNICAL SPECIFICATION)

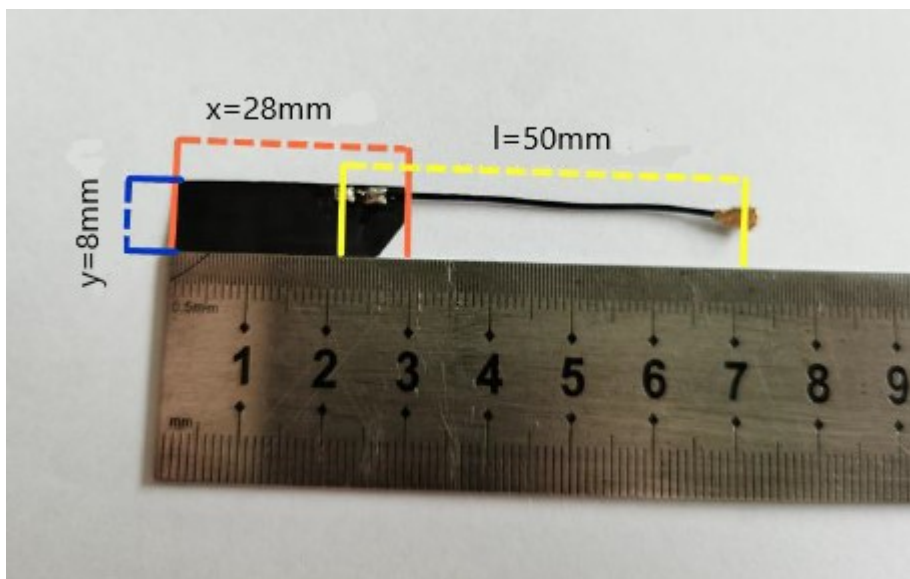
Electrical Specifications	
Frequency Range (MHz)	2400-2500
Input Impedence ( $\Omega$ )	50
V.S.W.R	$\leq 2$
Gain (dBi)	2.37
Polarization Type	Vertical
Power Capacity (w)	50
Mechanical Specifications	
Antenna Length (mm)	70mm
Radiator	Cuprum
Connect Type	IPEX-1
Working Temp( $^{\circ}\text{C}$ )	-10~40
Storage Temperature( $^{\circ}\text{C}$ )	-40~85
antenna size	28mmx8mm

Weight (g)	3
------------	---

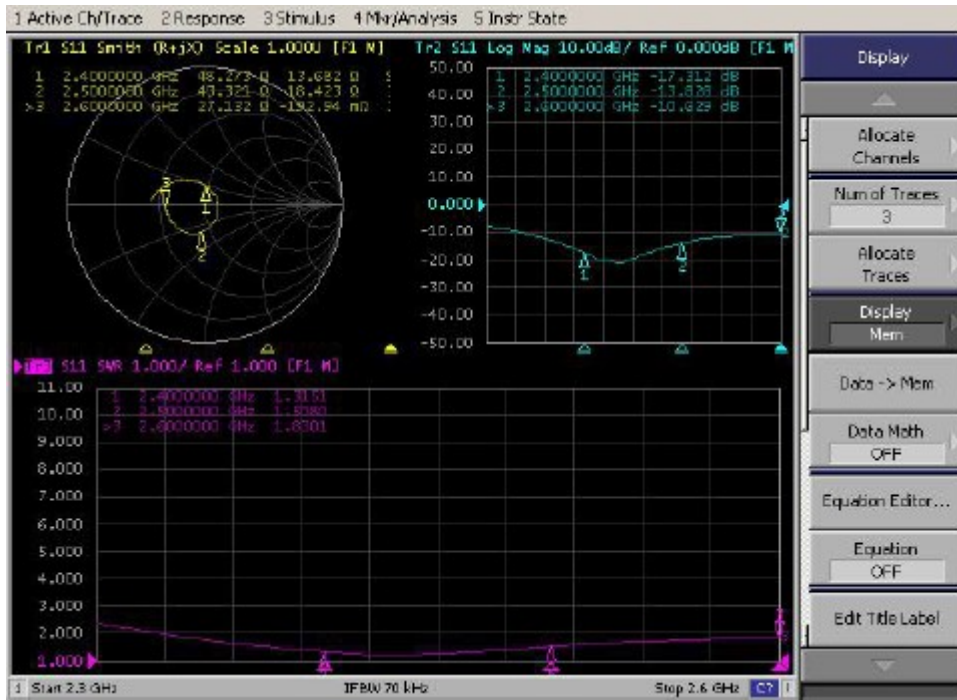
## 2、PRODUCT PICTURE



## 3、PRODUCT SPECIFICATION CHART



## 4、Image of antenna field shape test



## 5、 Antenna Gain

FETUKEJI											
Frequency ID	1	2	3	4	5	6	7	8	9	10	11
Frequency (MHz)	2400.0	2410.0	2420.0	2430.0	2440.0	2450.0	2460.0	2470.0	2480.0	2490.0	2500.0
Point Values											
Ant. Port Input Pwr. (dBm)	0.00	0.00	0.00	0.00	0.00	0.00	0.00	0.00	0.00	0.00	0.00
Tot. Rad. Pwr. (dBm)	-8.06	-7.96	-7.60	-7.26	-7.46	-7.25	-6.98	-6.88	-6.92	-7.32	-7.14
Peak EIRP (dBm)	-3.60	-3.32	-2.79	-2.43	-2.88	-2.79	-2.59	-2.64	-2.97	-3.43	-3.40
Directivity (dBi)	4.46	4.64	4.82	4.83	4.58	4.45	4.39	4.23	3.94	3.89	3.74
Efficiency (dB)	-8.06	-7.96	-7.60	-7.26	-7.46	-7.25	-6.98	-6.88	-6.92	-7.32	-7.14
Efficiency (%)	15.60	16.00	17.40	18.80	17.90	18.80	20.10	20.50	20.30	18.60	19.30
Gain (dBi)	1.20	1.48	2.01	2.37	1.92	2.01	2.21	2.16	1.83	1.37	1.40
NHPRP ±Pi/4 (dBm)	-8.73	-8.41	-7.80	-7.32	-7.60	-7.41	-7.17	-7.28	-7.69	-8.13	-8.00
NHPRP ±Pi/6 (dBm)	-10.11	-9.79	-9.19	-8.72	-9.01	-8.83	-8.59	-8.69	-9.09	-9.49	-9.33
NHPRP ±Pi/8 (dBm)	-11.19	-10.88	-10.29	-9.83	-10.12	-9.95	-9.71	-9.80	-10.19	-10.55	-10.38
Upper Hem. PRP (dBm)	-10.48	-10.37	-10.00	-9.65	-9.82	-9.63	-9.37	-9.31	-9.37	-9.75	-9.54
Lower Hem. PRP (dBm)	-11.75	-11.66	-11.33	-11.00	-11.23	-11.00	-10.70	-10.55	-10.56	-10.99	-10.86
Upper Hem. PRP (%)	8.94	9.18	9.99	10.83	10.41	10.90	11.55	11.73	11.55	10.59	11.12
Lower Hem. PRP (%)	6.69	6.82	7.37	7.95	7.53	7.95	8.52	8.80	8.78	7.97	8.20

