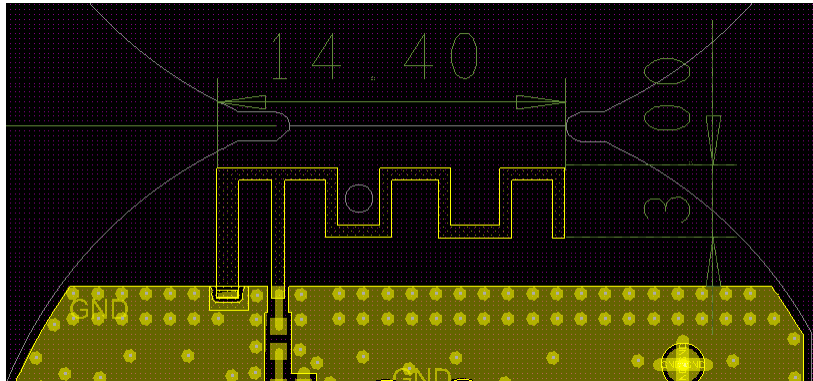


Antenna Specification

1. Antenna Describe

Antenna Manufacturer	Shenzhen Sonoff Technologies Co.,Ltd.
Antenna Address	3F & 6F, Bldg A, No. 663, Bulong Rd, Shenzhen, Guangdong, China
Antenna Model	ANTENNA-2400-2500A
Antenna Type	PCB Antenna
Antenna Gain	2.07dBi Max
Frequency Rang	2400-2500MHz
VSWR	≤ 1.5
Input Impedance	50 Ω

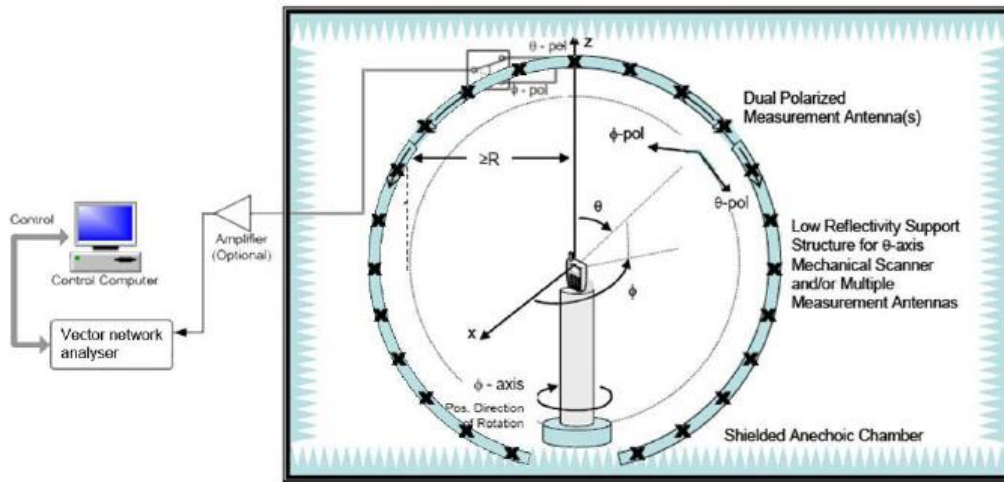
2. External View Drawing



Unit: mm

3. Measurement Result

3.1 Test Setup



3.2 S11 Diagram

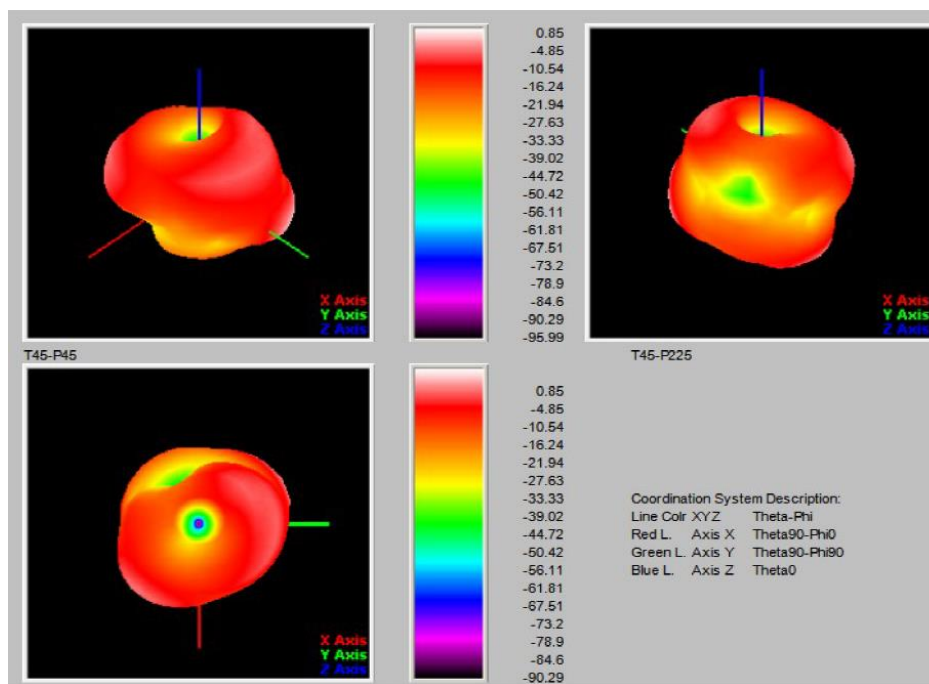


3.3 Antenna test data

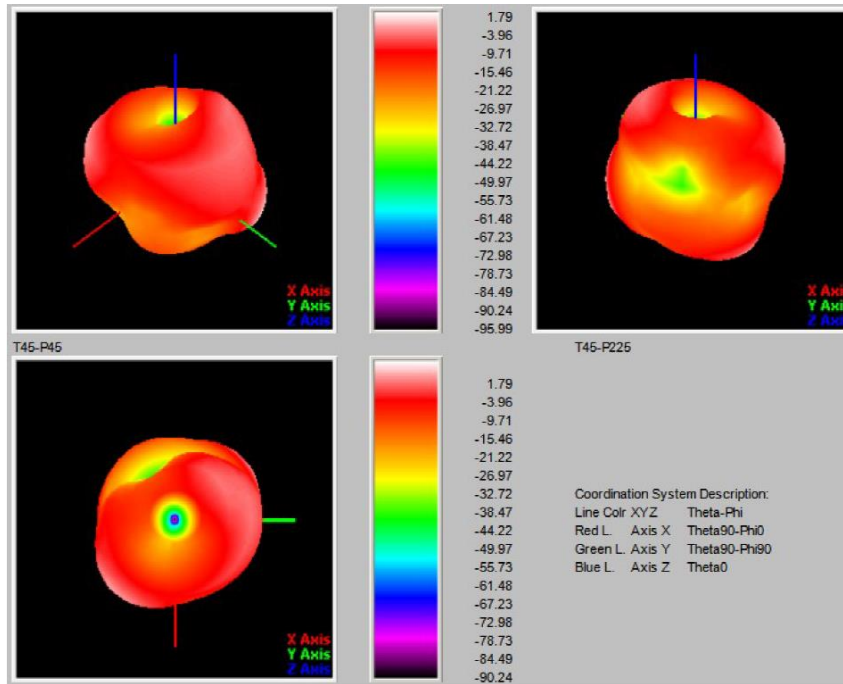
Frequency (MHz)	Peak Gain (dBi)	Efficiency (%)
2400	0.85	31.6
2410	1.04	32.1
2420	1.53	34.3
2430	2.07	38.1
2440	1.79	36.7
2450	1.79	37.9
2460	1.85	40.1
2470	1.75	41.5
2480	1.37	41.6
2490	1.21	40.2
2500	1.36	41.9

3.4 Antenna test diagram

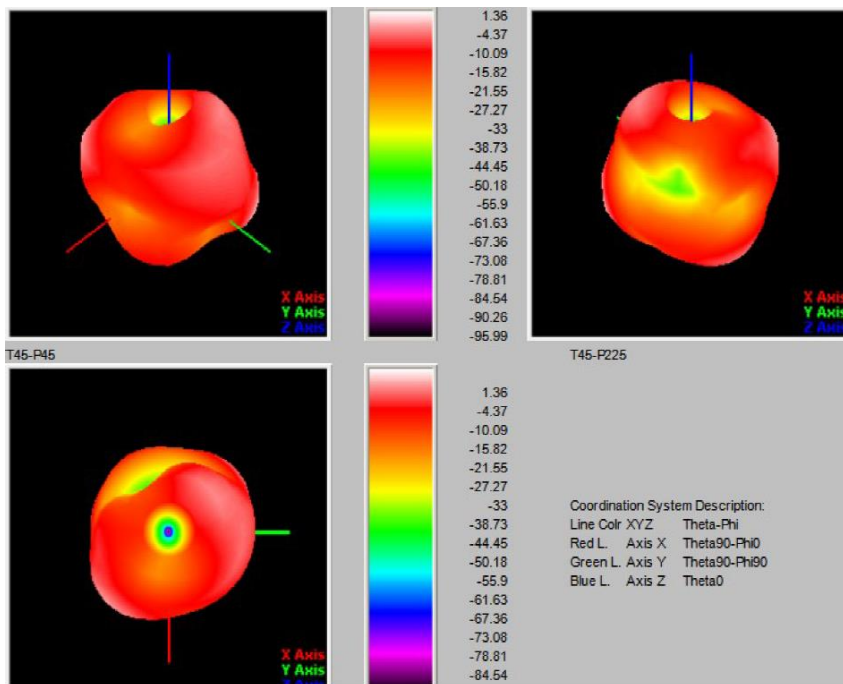
3D Diagram



2400MHz



2450MHz



2500MHz