

 **SONOFF**



**SNZB-03**

User manual V 1.0



**Motion Sensor**

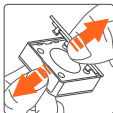
中文-----1-6

English-----7-12

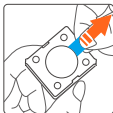
本设备需要连接SONOFF ZigBee网关进行智能操作，可与其他产品互联互通。

Ⓢ 设备支持其它同类型的网关，具体以实际产品为准。

## 取出电池绝缘片

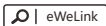


>



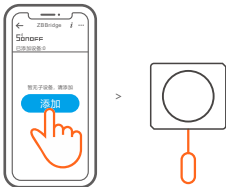
## 使用说明

### 1. 下载APP



## 2. 添加子设备

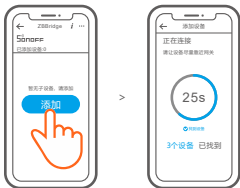
添加子设备前，请先连接网关。



打开eWeLink APP，选择要连接的网关，点击“添加”子设备，然后长按设备重置按钮5秒直至LED指示灯闪烁3下，设备进入配对状态，等待设备连接。

注意：如添加失败，请将设备移近网关后再重新添加。

# SONOFF网关支持同时连接多个子设备



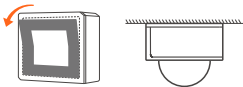
先打开eWeLink APP网关页面，点击添加，然后设置让所需配对的子设备进入配对状态，等待设备连接。

## 安装方法

方法1：直接放置桌面使用。



方法2：撕下3M胶保护膜，粘贴在所需区域即可



注意：请勿安装在金属表面，否则会影响无线通讯距离。

## 产品参数

产品型号: SNZB-03

电池型号: CR2450

工作电压: 3V

无线协议: ZigBee (IEEE 802.15.4)

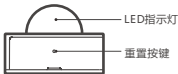
工作温度: -10-40°C

工作湿度: 10-90%RH(无冷凝)

外壳材料: PC

产品规格: 40x35x28mm

## 产品介绍



## 产品特点

SNZB-03是一款低功耗的运动传感器，可实时感应当环境是否有移动物体，通过添加场景联动设置控制其他设备。



低功耗



移动感应



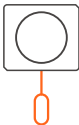
电量低消息推送



场景联动

## 删除子设备

长按子设备重置按钮5秒直到LED指示灯闪烁3下，此时子设备已在网关中删除。

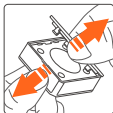


提醒：用户还可在APP子设备界面中删除子设备。

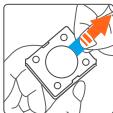
The device can be operated intelligently via working with the SONOFF ZigBee Bridge to communicate with other devices.

ⓘ The device can work with other gateways supporting ZigBee 3.0 wireless protocol. Detailed information is in accordance with the final product.

## Pull out the battery insulation sheet

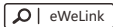


>



## Operation instruction

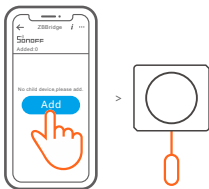
1. Download APP





## 2. Add sub-devices

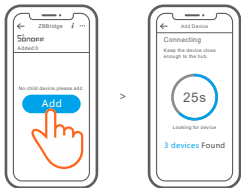
Connect the Bridge before adding the sub-device



Access eWeLink APP, select the Bridge that you want to connect, and tap "Add" to add a sub-device. Then long press reset button on the device for 5s until the LED indicator flashes three times, which means the device has entered the pairing mode, and be patient until pairing completes.

ⓘ If the addition failed, move the sub-device closer to the Bridge and try again.

SONOFF ZigBee Bridge supports connecting multiple sub-devices at the same time.



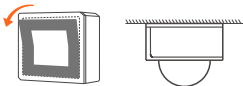
Power the Bridge on, access the Bridge page in the eWeLink APP, and tap "Add". Then set the sub-device to be pair to the pairing mode, and be patient until the pairing completes.

## Installation methods

1. Placed on the desktop for use.



2. Tear off the protective film of the 3M adhesive and stick the device on the desired area.



⚠ Do not install on the metal surface, otherwise it will affect the wireless communication distance.

## Specifications

Model: SNZB-03

Battery model: CR2450

Working voltage: 3V

Wireless connection: ZigBee (IEEE 802.15.4)

Working temperature : -10-40°C

Working humidity: 10-90%RH (non-condensing)

Material: PC

Dimension: 40x35x28mm

## Product Introduction



## Features

SNZB-03 is a ZigBee low-energy motion sensor that can detect the movement of objects in real time. Connect it with the Bridge and you can create a smart scene to trigger other devices.



Low-energy



Movement  
detection



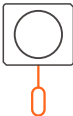
Low battery  
notification



Smart scenes

## Delete sub-devices

Long press the reset button on the sub-device for 5s until the LED indicator flashes three times. In this case, the sub-device is deleted from the Bridge successfully.



ⓘ Users can delete sub-devices directly from the sub-device page on APP.

## FCC Statement

This equipment has been tested and found to comply with the limits for a Class B digital device, pursuant to part 15 of the FCC Rules. These limits are designed to provide reasonable protection against harmful interference in a residential installation. This equipment generates, uses and can radiate radio frequency energy and, if not installed and used in accordance with the instructions, may cause harmful interference to radio communications. However, there is no guarantee that interference will not occur in a particular installation. If this equipment does cause harmful interference to radio or television reception, which can be determined by turning the equipment off and on, the user is encouraged to try to correct the interference by one or more of the following measures:

- Reorient or relocate the receiving antenna.
- Increase the separation between the equipment and receiver.
- Connect the equipment into an outlet on a circuit different from that to which the receiver is connected.
- Consult the dealer or an experienced radio/TV technician for help.

This device complies with part 15 of the FCC Rules. Operation is subject to the following two conditions: (1) This device may not cause harmful interference, and (2) this device must accept any interference received, including interference that may cause undesired operation.

## Radiation Exposure Statement

This equipment complies with FCC radiation exposure limits set forth for an uncontrolled environment.

This transmitter must not be collocated or operating in conjunction with any other antenna or transmitter.

This equipment should be installed and operated with minimum distance 30cm between the radiator& your body.

## Caution

Any changes or modifications not expressly approved by the party responsible for compliance could void the user's authority to operate the equipment.

# SONOFF

**Shenzhen Sonoff Technologies Co., Ltd.**

1001, BLDG8, Lianhua Industrial Park, shenzhen, GD,  
China

ZIP code: 518000

Website: [sonoff.tech](http://sonoff.tech)

MADE IN CHINA

