

**SONOFF**

**SNZB-02D**

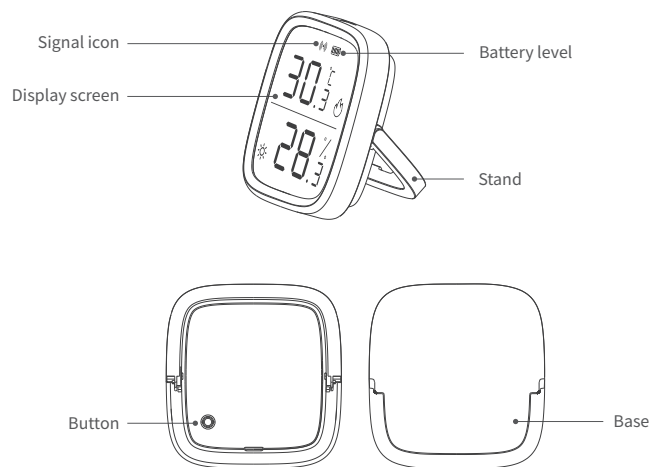
User manual V1.0



**Zigbee LCD Smart  
Temperature Humidity Sensor**

· English -----2 - 6 · Warning -----7 - 9

## Introduction



## Features

A smart temperature and humidity sensor with LCD screen, real-time temperature and humidity viewing on the screen and APP monitoring. Obtain the most accurate temperature and humidity data with ultra-high precision, support switching between °C and °F, historical data storage and export, as well as remote alarms and notifications, voice query, and scene linkage to realize your home automation.



High Precision



APP Monitoring



°C / °F Unit Switching



Data Storage & Export



Alarm & Notification



Voice Query

## Pair to SONOFF Zigbee Gateway

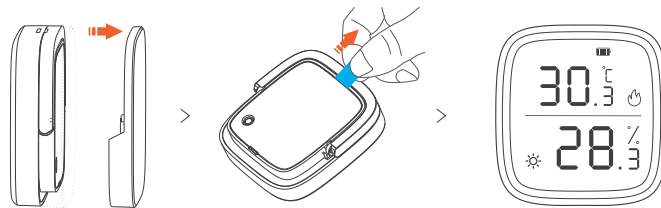
### 1. Download the eWeLink App

Please download the "eWeLink" App from Google Play Store or Apple App Store.



### 2. Power on the device

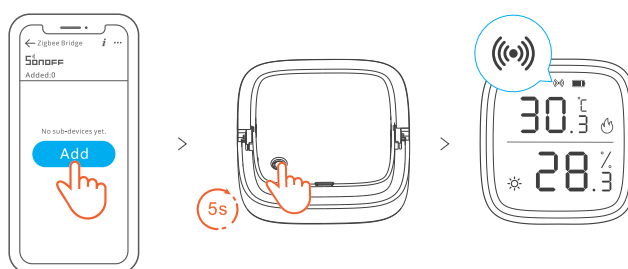
Take out the battery insulation sheet to power on the device.





ⓘ If the device is the No battery version, please install the battery (CR2450) to power on the device.

### 3. Pair SONOFF Zigbee Bridge to your eWeLink account


#### 4. Add the device to Zigbee Bridge



Tap "Add" on the main page of Zigbee Bridge on your eWeLink App, and long press the button on the device for 5s until the Zigbee signal icon  flashes, now the device is entered the pairing mode and waiting to be added.

- ⓘ The pairing time is 30s, when the device is added successfully, the Zigbee signal icon  will keep on. If the device is failed to be added, please move the device closer to the Bridge and add it again.

#### Effective Communication Distance Verification

At the selected device installation location, short press the pairing button of the device, and the signal icon  on the device screen is always on, indicating that the device and the device (routing device or gateway) under the Zigbee network are within an effective communication distance.

## Specification

Model	SNZB-02D
Power supply	3V button cell x 1
Battery model	CR2450
Wireless connection	Zigbee 3.0
Working temperature	-9.9°C~60°C
Working humidity	5%-95% RH, non-condensing
LCD screen size	2.8"
Casing material	PC+LCD
Dimension	59.5x62.5x18.5mm

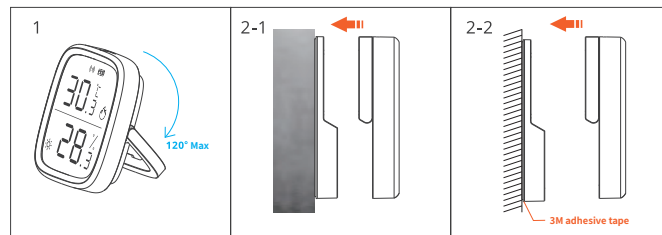
## Button action description

Action	Description
Double press	°C/°F switching (factory default is °C)
Long press for 5 seconds	Restore factory settings and re-enter Zigbee network pairing status

## Default comfort level

Dry	Humidity $\leq$ 40%RH
Wet	Humidity $\geq$ 60%RH
Cold	Temperature $\leq$ 19°C/66.2°F
Hot	Temperature $\geq$ 27°C/80.6°F

## Installation

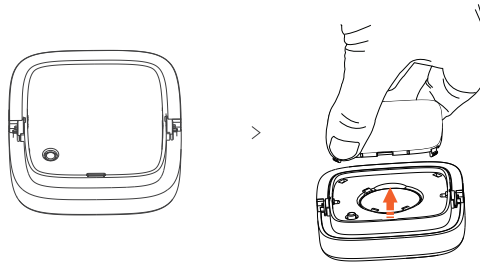


1. Place on the desktop

2. Install with base

- 2-1. Attach to the metal surface with the magnetic base
- 2-2. Stick on the wall with 3M adhesive on the base

## Battery replacement





“Do not ingest battery, Chemical Burn Hazard.”

This product contains a coin / button cell battery. If the coin / button cell battery is swallowed, it can cause severe internal burns in just 2 hours and can lead to death.

Keep new and used batteries away from children. If the battery compartment does not close securely, stop using the product and keep it away from children.

If you think batteries might have been swallowed or placed inside any part of the body, seek immediate medical attention.

**FCC Warning** Changes or modifications not expressly approved by the party responsible for compliance could void the user's authority to operate the equipment. This device complies with part 15 of the FCC Rules. Operation is subject to the following two conditions: (1) This device may not cause harmful interference, and (2) this device must accept any interference received, including interference that may cause undesired operation.

**FCC Radiation Exposure Statement:**

This equipment complies with FCC radiation exposure limits set forth for an uncontrolled environment. This transmitter must not be co-located or operating in conjunction with any other antenna or transmitter.

**Note:**

This equipment has been tested and found to comply with the limits for a Class B digital device, pursuant to part 15 of the FCC Rules. These limits are designed to provide reasonable protection against harmful interference in a residential installation. This equipment generates, uses and can radiate radio frequency energy and, if not installed and used in accordance with the instructions, may cause harmful interference to radio communications. However, there is no guarantee that interference will not occur in a particular installation. If this equipment does cause harmful interference to radio or television reception, which can be determined by turning the equipment off and on, the user is encouraged to try to correct the interference by one or more of the following measures:

- Reorient or relocate the receiving antenna.
- Increase the separation between the equipment and receiver.
- Connect the equipment into an outlet on a circuit different from that to which the receiver is connected.
- Consult the dealer or an experienced radio/TV technician for help.

To maintain compliance with FCC's RF Exposure guidelines, This equipment should be installed and operated with minimum distance between 20cm the radiator your body: Use only the supplied antenna.

## IC Warning

English: This device contains licence-exempt transmitter(s)/receiver(s) that comply with Innovation, Science and Economic Development Canada's licence-exempt RSS(s). Operation is subject to the following two conditions:

- (1) This device may not cause interference.
- (2) This device must accept any interference, including interference that may cause undesired operation of the device.

The digital apparatus complies with Canadian CAN ICES-3 (B)/NMB-3(B).

French: Cet appareil contient des émetteurs/récepteurs exempts de licence qui sont conformes aux RSS exempts de licence d'Innovation, Sciences et Développement économique Canada.

L'exploitation est soumise aux deux conditions suivantes :

- (1) Cet appareil ne doit pas provoquer d'interférences.
- (2) Cet appareil doit accepter toute interférence, y compris les interférences susceptibles de provoquer un fonctionnement indésirable de l'appareil.

L'appareil numérique du CIEM conforme canadien peut - 3 (b) / nmb - 3 (b).

This device meets the exemption from the routine evaluation limits in section 2.5 of RSS 102 and compliance with RSS 102 RF exposure, users can obtain Canadian information on RF exposure and compliance.

cet appareil est conforme à l'exemption des limites d'évaluation courante dans la section 2.5 du cnr - 102 et conformité avec rrs 102 de l'exposition aux rf, les utilisateurs peuvent obtenir des données canadiennes sur l'exposition aux champs rf et la conformité.

This equipment complies with Canada radiation exposure limits set forth for an uncontrolled environment.

Cet équipement est conforme aux limites d'exposition aux rayonnements du Canada établies pour un environnement non contrôlé.

This equipment should be installed and operated with minimum distance 20cm between the radiator & your body.

Cet équipement doit être installé et utilisé à une distance minimale de 20 cm entre le radiateur et votre corps.

### ISED Radiation Exposure Statement:

This equipment complies with IC RF radiation exposure limits set forth for an uncontrolled environment.

This transmitter must not be co-located or operating in conjunction with any other antenna or transmitter.

### Cet appareil est

conforme aux limites d'exposition de rayonnement RF IC tablies pour un environnement non contrôlé.

Cet émetteur ne doit pas être co-implanté ou fonctionner en conjonction avec toute autre antenne ou transmetteur.



Hereby, Shenzhen Sonoff Technologies Co., Ltd. declares that the radio equipment type SNZB-02D is in compliance with Directive 2014/53/EU. The full text of the EU declaration of conformity is available at the following internet address:

<https://sonoff.tech/usermanuals>

Operation frequency Range: 2405-2480MHz(Zigbee)



**Shenzhen Sonoff Technologies Co., Ltd.**

3F & 6F, Bldg A, No. 663, Bulong Rd, Shenzhen, Guangdong, China

ZIP code: 518000

Website: [sonoff.tech](https://sonoff.tech)

MADE IN CHINA

