

antenna SPECIFICATION

Product description: 2.4G PCB Antenna
Uni Link's part number: ANTENNA-2400
Issue Date: 2022-09-19
Note: 2400-2500MHZ

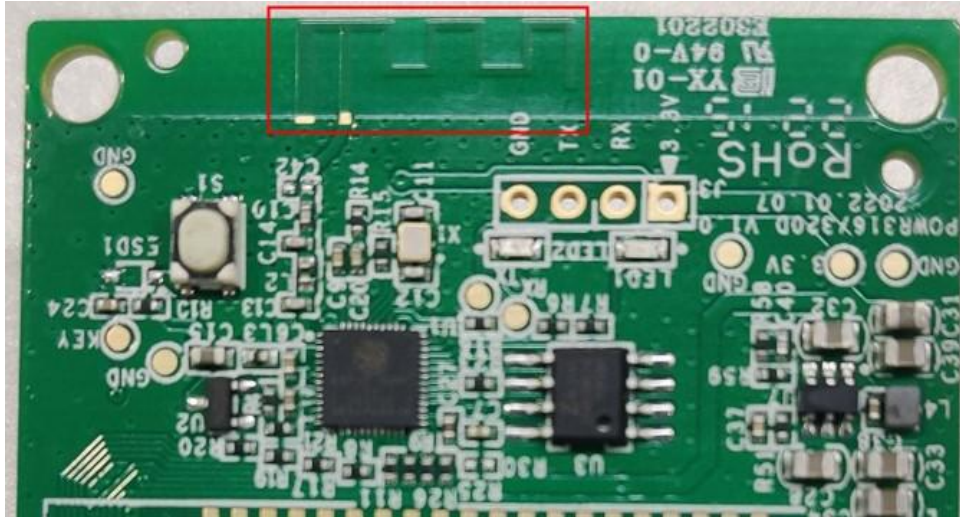
1、 (PRODUCT TECHNICAL SPECIFICATION)

Electrical Specifications	
Frequency Range (MHz)	2400-2500
Input Impedence (Ω)	53
V.S.W.R	≤ 1.5
Gain (dBi)	-1.04
Polarization Type	Horizontal
Power Capacity (w)	2
Mechanical Specifications	
Antenna Length (mm)	mm
Radiator	Cuprum
Connect Type	NC
Working Temp($^{\circ}\text{C}$)	-10~40
Storage Temperature($^{\circ}\text{C}$)	-20~55
antenna size	14.4mm x 5.06mm x 0.1mm

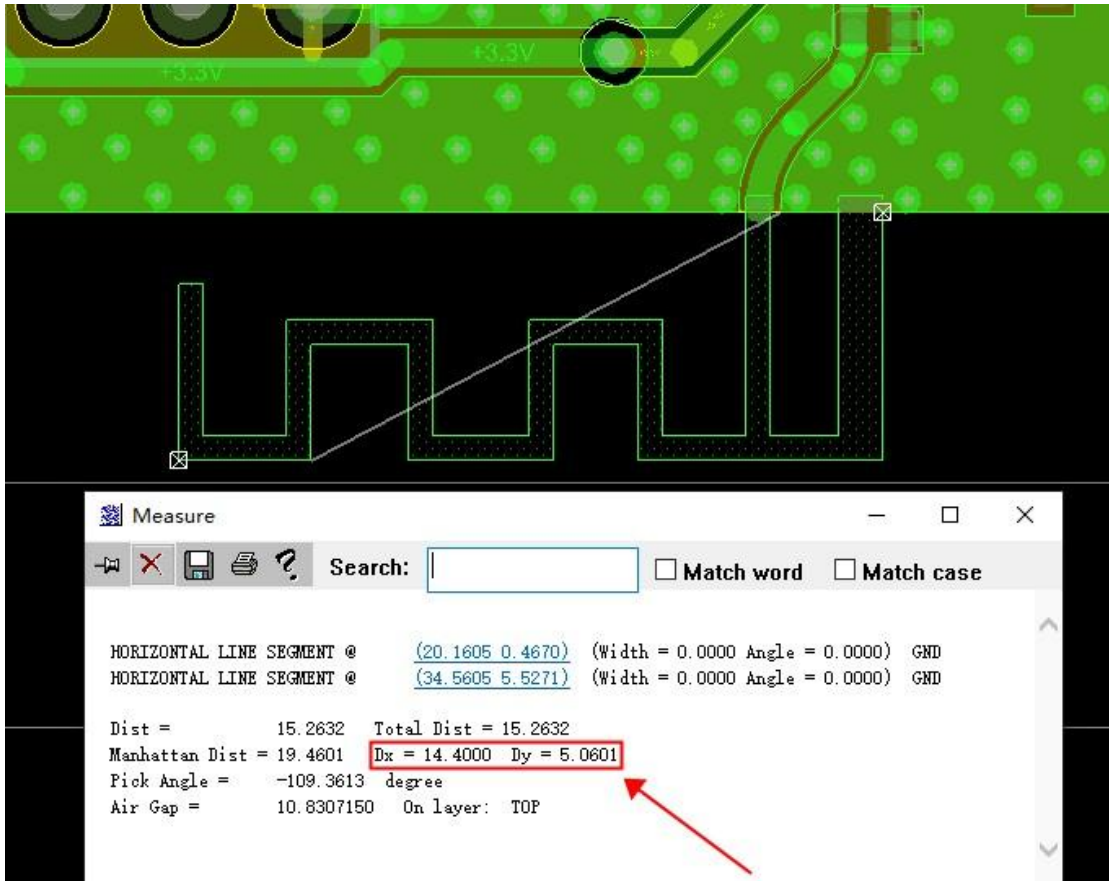
Weight (g)

9

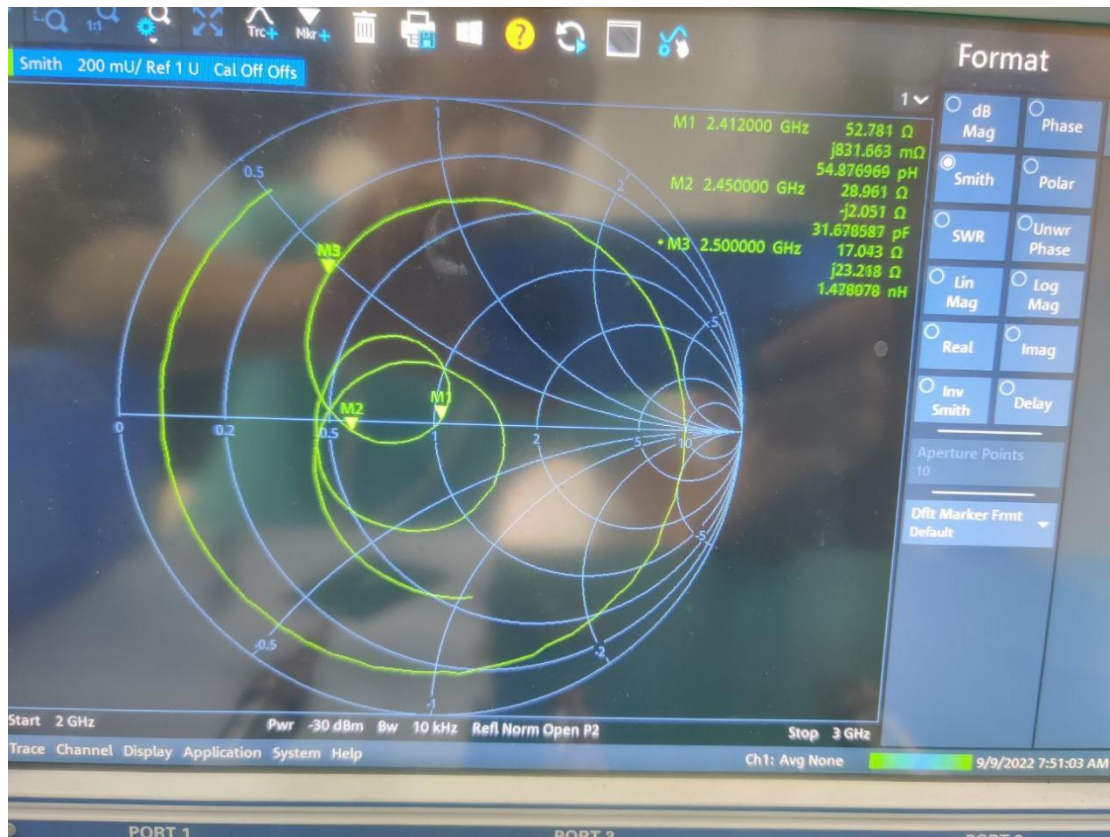
2、PRODUCT PICTURE



3、PRODUCT SPECIFICATION CHART



4、 Image of antenna field shape test



5、 Antenna gain

FETUKEJI											
Frequency ID	1	2	3	4	5	6	7	8	9	10	11
Frequency (MHz)	2400.0	2410.0	2420.0	2430.0	2440.0	2450.0	2460.0	2470.0	2480.0	2490.0	2500.0
Point Values											
Ant. Port Input Pwr. (dBm)	0.00	0.00	0.00	0.00	0.00	0.00	0.00	0.00	0.00	0.00	0.00
Tot. Rad. Pwr. (dBm)	-6.67	-6.88	-6.78	-6.49	-7.18	-7.20	-7.18	-7.21	-7.13	-7.90	-7.87
Peak EIRP (dBm)	-1.59	-1.70	-1.44	-1.04	-1.84	-1.85	-1.89	-2.20	-2.49	-3.42	-3.46
Directivity (dBi)	5.08	5.18	5.34	5.45	5.34	5.35	5.28	5.01	4.64	4.48	4.41
Efficiency (dB)	-6.67	-6.88	-6.78	-6.49	-7.18	-7.20	-7.18	-7.21	-7.13	-7.90	-7.87
Efficiency (%)	21.50	20.50	21.00	22.40	19.10	19.00	19.20	19.00	19.40	16.20	16.30
Gain (dBi)	-1.59	-1.70	-1.44	-1.04	-1.84	-1.85	-1.89	-2.20	-2.49	-3.42	-3.46
NHPRP ±Pi/4 (dBm)	-7.53	-7.53	-7.18	-6.76	-7.53	-7.58	-7.58	-7.84	-8.15	-9.00	-9.04
NHPRP ±Pi/6 (dBm)	-9.03	-9.04	-8.70	-8.29	-9.06	-9.11	-9.12	-9.38	-9.68	-10.54	-10.60
NHPRP ±Pi/8 (dBm)	-10.18	-10.19	-9.85	-9.43	-10.21	-10.25	-10.26	-10.53	-10.83	-11.71	-11.78
Upper Hem. PRP (dBm)	-9.99	-10.15	-9.98	-9.65	-10.30	-10.31	-10.26	-10.27	-10.17	-10.90	-10.84
Lower Hem. PRP (dBm)	-9.39	-9.65	-9.60	-9.36	-10.08	-10.13	-10.11	-10.17	-10.12	-10.92	-10.93
Upper Hem. PRP (%)	10.01	9.67	10.04	10.84	9.33	9.32	9.42	9.39	9.63	8.14	8.24
Lower Hem. PRP (%)	11.51	10.83	10.97	11.59	9.82	9.72	9.74	9.63	9.73	8.10	8.07

