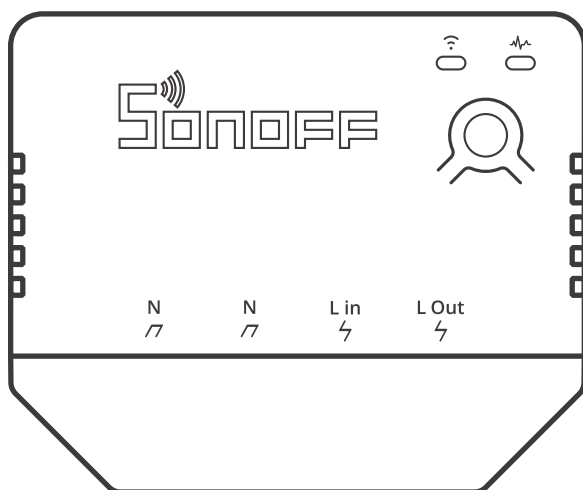




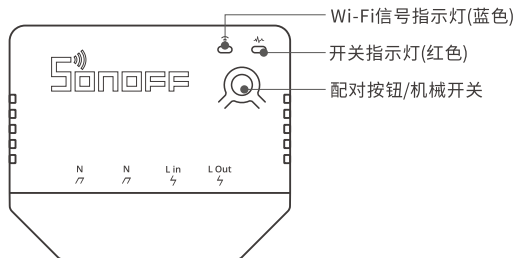
DIY MINI

User manual V1.0



SONOFF MINI R3 Smart Switch

产品介绍



ⓘ 设备重量<1Kg, 建议安装高度<2米。

功能特点

本设备是一款带“易微联轻智能”功能的智能迷你开关,可搭配开关伴侣(S-MATE)使用。S-MATE连接的开关(单火)通过发射“易微联轻智能”信号控制MINIR3,可使用开关断开时,MINIR3仍保持供电,不会离线。用您的智能手机在任何地方打开或关闭家里的设备,设置定时开/关、分享给您的家人控制等等。



远程控制



智能定时/延时



语音控制



分享功能



智能场景



“易微联轻智能”
控制



点动模式



DIY 模式



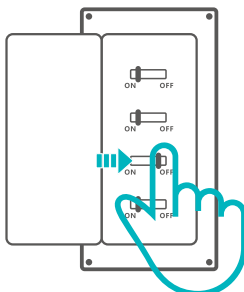
群组功能



局域网功能

使用说明

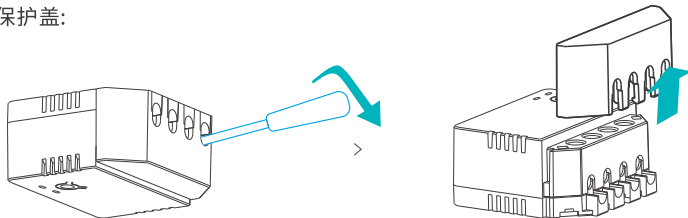
1. 断电



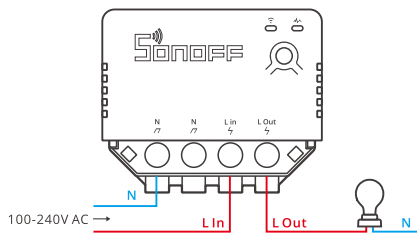
⚠ 设备安装、故障维修请由专业资质电工操作。切勿在设备通电时进行接线操作或触碰到接线端子,以免发生触电危险!

2. 接线

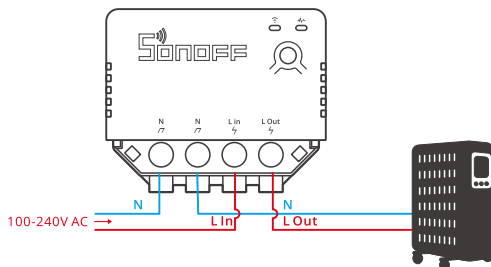
接线前先拆下保护盖:



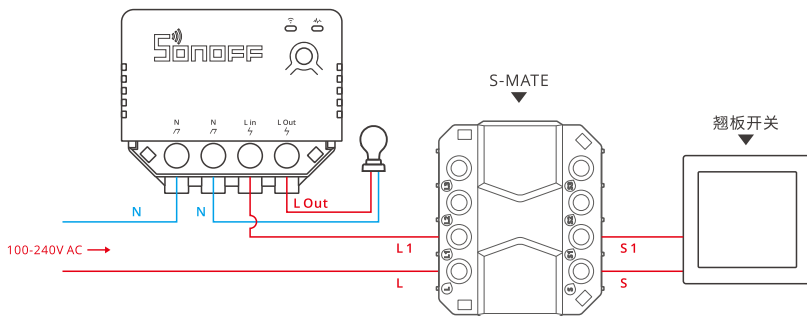
灯具接线示意:



电器接线示意:



MINIR3 搭配开关伴侣 (S-MATE) 接单火开关示意:



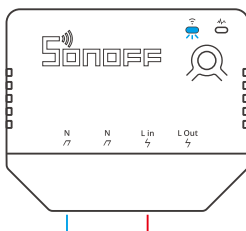
一个 S-MATE 最多可连接一个三通道开关, 连接的开关通道与 MINIR3 的控制可一对多、多对一及多对多。S-MATE 四个端子 (L/L1/L2/L3) 为连通的接线端子, 接入 MINIR3 的火线 L 不一定需要从 S-MATE 引出。

⚠️ 确保线路接入无误后, 再合上保护盖。

3. 下载“易微联”APP



4. 上电



通电后,设备首次使用,默认进入蓝牙配网模式。Wi-Fi 指示灯呈“两短一长闪烁”。

⚠ 三分钟内没有进行配网,设备将退出蓝牙配网模式。如需再次进入,长按配对按钮5秒直到Wi-Fi 指示灯呈两短一长闪烁即可。

5. 添加设备



点击“+”,选择“蓝牙配网”,再根据APP提示进行操作。

产品参数

型号	MINIR3
输入	100-240V ~ 50/60Hz 16A Max
输出	100-240V ~ 50/60Hz 16A Max
最大负载	3500W
“易微联轻智能”接收距离	最大 50 米
支持平台	Android & iOS
Wi-Fi	IEEE 802.11 b/g/n 2.4GHz
外壳材料	PC V0
产品规格	54x45x24mm

Wi-Fi信号指示灯状态说明

指示灯状态	状态描述
两短一长闪烁	蓝牙配网模式
快速闪烁	DIY 配对模式
常亮	设备在线
快闪一下	未连接路由
快闪二下	已连接上路由器,但未连接到云端
快闪三下	固件升级中

MINIR3 与“易微联轻智能”遥控器“学习绑定”

与 S-MATE 连接的开关相当于“易微联轻智能”遥控器。

进入 eWeLink APP MINIR3 主界面,再根据(下图)指引操作。



⚠ 该设备最多可添加 32 个遥控器按键。

MINIR3 与“易微联轻智能”遥控器“解除绑定”

在 eWeLink APP 已学习的遥控器列表, 选择需要删除的遥控器, 删除即可。

DIY 模式

DIY 模式是为希望通过现有的家庭自动化开源平台或本地 HTTP 客户端来控制 SONOFF 设备, 而不是通过 eWeLink 应用程序的人员设计的。更多详细使用说明请进入 <https://sonoff.tech> 的 developer 板块查看。

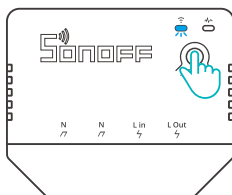
如何进入 DIY 配对模式

长按设备配对按钮 5 秒直到 Wi-Fi 指示灯呈“两短一长闪烁”状态, 松开。再次设备长按配对按钮 5 秒直到 Wi-Fi 指示灯呈“快闪”状态, 此时设备进入 DIY 配对模式。

⚠ 三分钟内没进行配网, 设备将退出 DIY 配对模式。

更换设备网络

设备更换新的网络环境使用时, 需长按设备配对按钮 5 秒直到 Wi-Fi 指示灯呈两短一长闪烁, 松开, 此时设备进入蓝牙配网模式, 即可再次添加。



恢复出厂设置

在 eWeLink APP 端“删除设备”, 设备即恢复出厂设置。

常见问题

Wi-Fi设备与 eWeLink APP 配对失败。

1. 确保设备处于配对模式。三分钟内没进行配网,设备将自动退出配对模式。
2. 请开启定位服务并允许定位权限。在选择 Wi-Fi 网络之前,请开启定位服务并允许定位权限。位置信息权限用于获取 Wi-Fi 列表信息。如果单击禁用,您将无法添加设备。
3. 确保您的 Wi-Fi 网络为 2.4GHz 频段。
4. 确保您输入了正确的 Wi-Fi SSID 和密码,没有包含特殊字符。密码错误是配对失败的一个非常常见的原因。
5. 配对时设备应靠近路由器,以保证良好的传输信号条件。

Wi-Fi 设备“离线”问题, 请通过 Wi-Fi LED 指示灯状态检查以下问题:

LED 指示灯每 2 秒闪烁一次, 表示您无法连接到路由器。

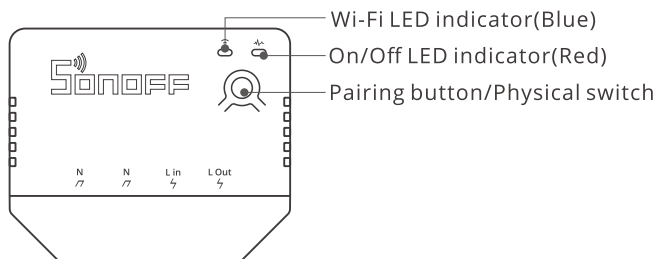
1. 可能您输入了错误的 Wi-Fi SSID 和密码。
2. 确保您的 Wi-Fi SSID 和密码不包含特殊字符, 例如希伯来语、阿拉伯语字符, 我们的系统无法识别这些字符, 因此无法连接到 Wi-Fi。
3. 可能你的路由器承载能力较低。
4. 可能是 Wi-Fi 强度较弱。您的路由器距离您的设备太远, 或者路由器和设备之间可能存在阻碍信号传输的障碍物。
5. 确保设备的 MAC 不在您的 MAC 管理黑名单中。

LED 指示灯重复闪烁两次表示您无法连接到服务器。

1. 确保互联网连接正常。您可以使用您的手机或PC连接互联网, 如果无法访问, 请检查互联网连接的可用性。
2. 可能你的路由器承载能力低。连接到路由器的设备数量超过其最大值。请确认您的路由器可以携带的最大设备数量。如果超过, 请删除一些设备或换个更大的路由器再试。
3. 请联系您的 ISP 并确认我们的服务器地址没有被屏蔽:
cn-disp.coolkit.cc (中国大陆)
as-disp.coolkit.cc (亚洲除中国外)
eu-disp.coolkit.cc (在欧盟)
us-disp.coolkit.cc (美国)

如果以上方法均无法解决此问题, 请通过 eWeLink APP 上的帮助&反馈提交您的请求。

Product Introduction



⚠ The device weight is less than 1 kg. The installation height of less than 2 m is recommended.

Features

MINIR3 is a DIY mini smart switch with "eWeLink Remote" that can match with the switch mate (S-MATE) to use. The switch (single L wire) connected with S-MATE can control MINIR3 through "eWeLink Remote". In this case, MINIR3 can keep powering and online when the switch (single L wire) is off. Therefore, you can turn on/ off, schedule on/off the connected appliance and share them with your family to control.



Remote Control



Single/Countdown
Timing



Voice Control



Share Control



Smart Scene



"eWeLink Remote"
control



Inching Mode



DIY Mode



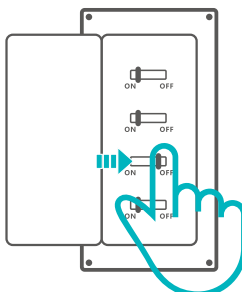
Group Control



LAN Control

Operating Instruction

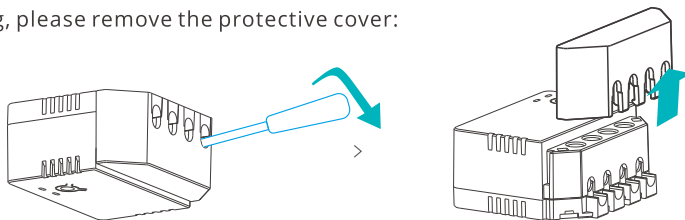
1. Power off



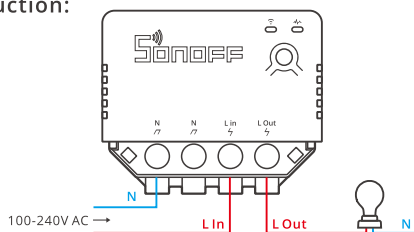
⚠ Please install and maintain the device by a professional electrician. To avoid electric shock hazard, do not operate any connection or contact the terminal connector after plugging in!

2. Wiring instruction

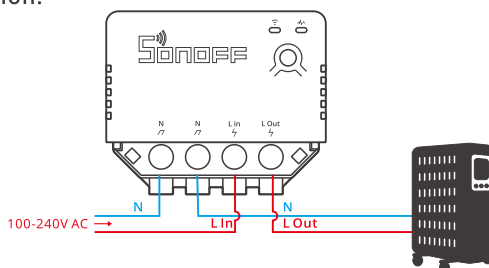
Before wiring, please remove the protective cover:



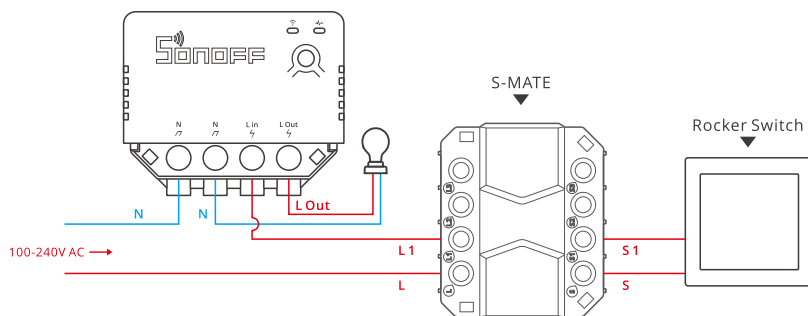
One live wire wiring instruction:



Appliance wiring instruction:



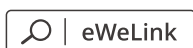
The wiring instruction of single L wire (connect to the S-MATE switch):



One S-MATE can be connected to one 3-gang switch at most. The control way to connecting each gang and MINIR3 can be one-to-more, more-to-one and more-to-more. There are L/L1/L2/L3 on the S-MATE which can be used as terminal connectors, but you have options to directly connect the L wire of MINIR3 to the L wire in the switching box without going through the S-MATE.

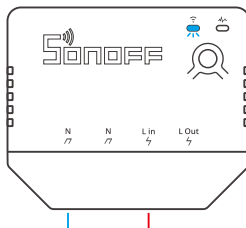
⚠ Close the protective cover after confirming the wiring is correct.

3. Download the eWeLink APP



Android™ & iOS

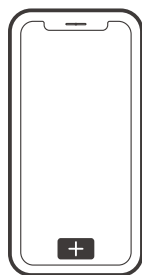
4. Power on



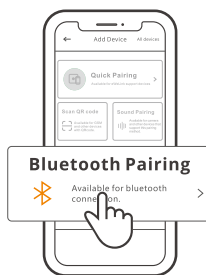
After powering on, the device will enter the bluetooth pairing mode during the first use. The Wi-Fi LED indicator changes in a cycle of two short and one long flash and release.

⚠ The device will exit the bluetooth pairing mode if not paired within 3mins. If you want to enter this mode, please long press the manual button for about 5s until the Wi-Fi LED indicator changes in a cycle of two short and one long flash and release.

5. Add the device



>



Tap "+" and select "bluetooth pairing", then operate following the prompt on the APP.

Specifications

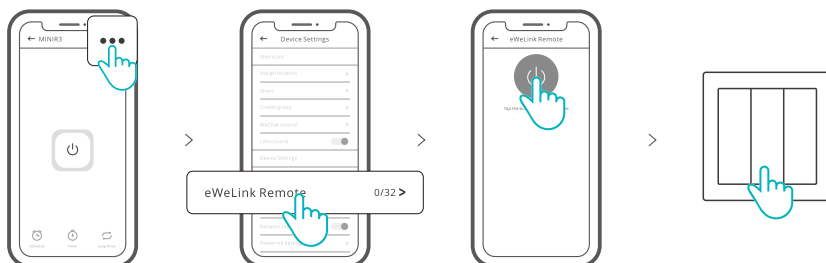
Model	MINIR3
Input	100-240V ~ 50/60Hz 16A Max
Output	100-240V ~ 50/60Hz 16A Max
Max.load	3500W
"eWeLink Remote" receiving distance	Up to 50M
Operating systems	Android & iOS
Wi-Fi	IEEE 802.11 b/g/n 2.4GHz
Shell material	PC V0
Dimension	54x45x24mm

Wi-Fi LED indicator status instruction

LED indicator status	Status instruction
Flashes (one long and two short)	Bluetooth Pairing Mode
Flashes quickly	DIY Pairing Mode
Keeps on	Device is Oline
Flashes quickly once	Fail to Connect to Router
Flashes quickly twice	Connected to Router but Fail to Connect to Serve
Flashes quickly three times	Firmware Updating

The "Learn Binding" of MINIR3 and "eWeLink Remote" controller

The switch connected to S-MATE can be used as a "eWeLink Remote" controller. Access the MINIR3 main interface of eWeLink App and operate it according to the operation guide (as shown below).



⚠ The device can add 32 remote controller buttons at most.

“Dete binding” for MINIR3 and “eWeLink Remote” controllers

Select the remote control that you want to clear in the learned remote control list in the eWeLink APP, then go to delete.

DIY Mode

DIY mode is designed for home automation open-source platform or local HTTP client instead of eWeLink app to control SONOFF devices. More detailed instructions can be check in the Developer through (<https://sonoff.tech>).

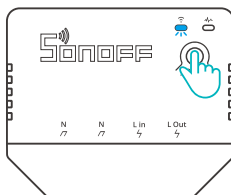
How to enter the DIY Pairing Mode

Long press Pairing button for 5s until the Wi-Fi LED indicator changes in a cycle of two short flashes and one long flash and release. Long press Pairing button for 5s again until the Wi-Fi LED indicator flashes quickly. Then, the device enters DIY Pairing Mode.

⚠ The device will exit the DIY Pairing Mode if not paired within 3mins.

Switch Network

If you need to change the network, long press the pairing button for 5s until the Wi-Fi LED indicator changes in a cycle of two short and one long flash and release, then the device enters Bluetooth pairing mode and you can pair again.



Factory Reset

Deleting the device on the eWeLink app indicates you restore it to factory setting.

Common Problems

Fail to pair Wi-Fi devices to eWeLink APP

1. Make sure the device is in pairing mode. After three minutes of unsuccessful pairing, the device will automatically exit pairing mode.
2. Please turn on location services and allow location permission. Before choosing the Wi-Fi network, location services should be turned on and location permission should be allowed. Location information permission is used to obtain Wi-Fi list information. If you click Disable, you will not be able to add devices.
3. Make sure your Wi-Fi network runs on the 2.4GHz band.
4. Make sure you entered a correct Wi-Fi SSID and password, no special characters contained. Wrong password is a very common reason for pairing failure.
5. The device shall get close to the router for a good transmission signal condition while pairing.

Wi-Fi devices "Offline" issue, Please check the following problems by the Wi-Fi LED indicator status:

The LED indicator blinks once every 2s means you fail to connect to the router.

1. Maybe you entered the wrong Wi-Fi SSID and password.
2. Make sure that your Wi-Fi SSID and password don't contain special characters, for example, the Hebrew, Arabic characters, our system can't recognize these characters and then fail to connect to the Wi-Fi.
3. Maybe your router has a lower carrying capacity.
4. Maybe the Wi-Fi strength is weak. Your router is too far away from your device, or there may be some obstacle between the router and device which blocks the signal transmission.
5. Be sure that the MAC of the device is not on the blacklist of your MAC management.

The LED indicator flashes twice on repeated means you fail to connect to the server.

1. Make sure the Internet connection is working. You can use your phone or PC to connect to the Internet, and if it fails to access, please check the availability of the Internet connection.
2. Maybe your router has a low carrying capacity. The number of devices connected to the router exceeds its maximum value. Please confirm the maximum number of devices that your router can carry. If it exceeds, please delete some devices or get a larger router and try again.
3. Please contact your ISP and confirm our server address is not shielded:
cn-disp.coolkit.cc (China Mainland)
as-disp.coolkit.cc (in Asia except China)
eu-disp.coolkit.cc (in EU)
us-disp.coolkit.cc (in US)

If none of the above methods solved this problem, please submit your request via help&feedback on the eWeLink APP.

FCC Warning

Changes or modifications not expressly approved by the party responsible for compliance could avoid the user's authority to operate the equipment.

This device complies with part 15 of the FCC Rules. Operation is subject to the following two conditions: (1) This device may not cause harmful interference, and (2) this device must accept any interference received, including interference that may cause undesired operation.

FCC Radiation Exposure Statement:

This equipment complies with FCC radiation exposure limits set forth for an uncontrolled environment. This equipment should be installed and operated with minimum distance 20cm between the radiator & your body. This transmitter must not be co-located or operating in conjunction with any other antenna or transmitter.

Note:

This equipment has been tested and found to comply with the limits for a Class B digital device, pursuant to part 15 of the FCC Rules. These limits are designed to provide reasonable protection against harmful interference in a residential installation. This equipment generates, uses and can radiate radio frequency energy and, if not installed and used in accordance with the instructions, may cause harmful interference to radio communications. However, there is no guarantee that interference will not occur in a particular installation. If this equipment does cause harmful interference to radio or television reception, which can be determined by turning the equipment off and on, the user is encouraged to try to correct the interference by one or more of the following measures:

- Reorient or relocate the receiving antenna.
- Increase the separation between the equipment and receiver.
- Connect the equipment into an outlet on a circuit different from that to which the receiver is connected.
- Consult the dealer or an experienced radio/TV technician for help.

Hereby, Shenzhen Sonoff Technologies Co., Ltd. declares that the radio equipment type MINIR3 is in compliance with Directive 2014/53/EU. The full text of the EU declaration of conformity is available at the following internet address:

<https://sonoff.tech/usermanuals>



Shenzhen Sonoff Technologies Co., Ltd.

1001, BLDG8, Lianhua Industrial Park, shenzhen, GD, China
ZIP code: 518000 Website: sonoff.tech

MADE IN CHINA

