



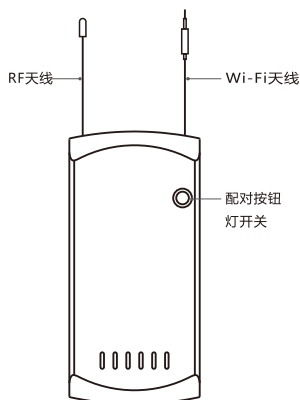
DIY iFan04

User manual V1.0



Wi-Fi Smart Ceiling Fan with Light Controller

产品介绍



⚠ 设备重量<1Kg, 建议安装高度<2米。

产品特点

用您的智能手机在任何地方打开或关闭家里的设备，设置定时开/关、分享给您的家人一起控制等等。



远程控制



智能定时/延时



语音控制



分享功能



智能场景



同步状态



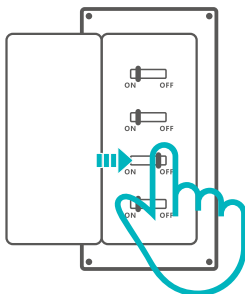
433MHz控制



局域网功能

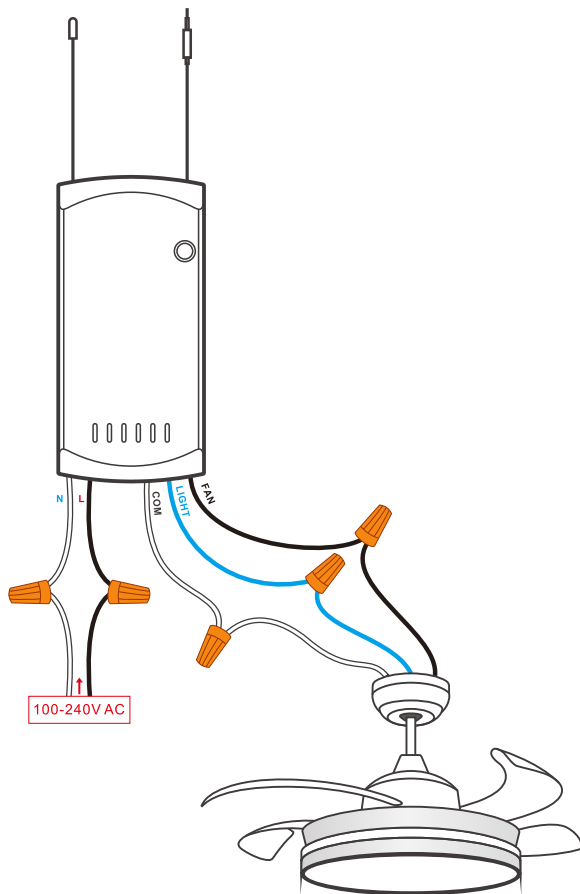
使用说明

1. 断电



⚠ 设备安装、故障维修请由专业资质电工操作。切勿在设备通电时进行接线操作，以免发生触电危险！

2. 接线



- ⚠ L 端输入前需接保护装置 (如: 保险丝或空气开关)
- ⚠ 确保零火线接入无误。

3. 下载“易微联”APP



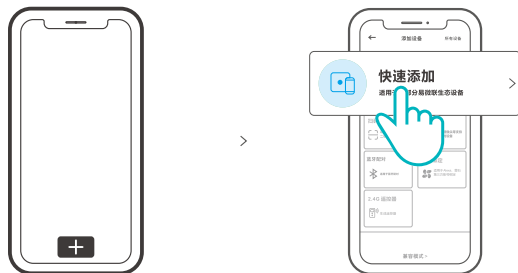
Android™ & iOS

4. 上电

通电后,设备首次使用,默认进入快速配网模式(Touch)。设备灯蜂鸣器呈两短一长响声。

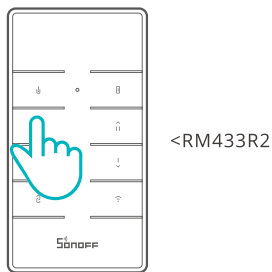
- ⚠ 三分钟内没有进行配网,设备将退出快速模式。如需再次进入,长按设备或RM433R2遥控器“配对按钮”5秒直到风扇灯蜂鸣器呈两短一长响声即可。

5. 添加设备



点击“+”,选择“快速添加”,再根据APP提示进行操作。

设备与SONOFF RM433R2遥控器的配对方法:



在设备上电后的5秒内长按遥控器任意按键至风扇灯蜂鸣器“滴”一声,即可配对成功,如5秒内未进行下一步操作,请重新上电。

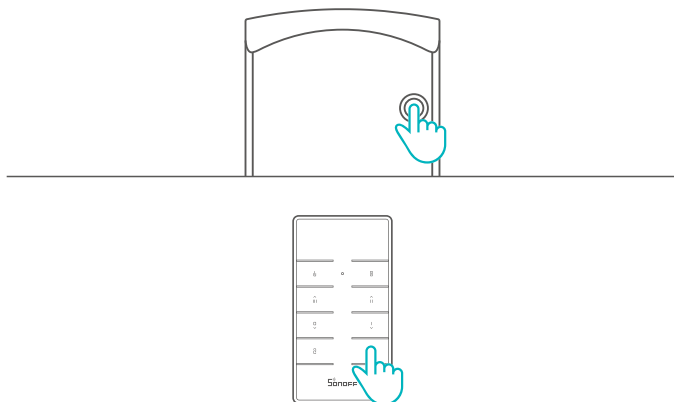
- ⚠ 设备最多配对10遥控器,超过10个则会自动覆盖第一条遥控数据。

产品参数

型号	iFan04-L, iFan04-H
输入	100-240V AC 50/60Hz 5A
输出	<p>iFan04-L: 灯具: 100-240V AC 50/60Hz 最大3A 钨丝灯: 最大 360W/120V LED: 最大 150W/120V 风扇: 100-240V AC 50/60Hz 最大2A</p> <p>iFan04-H: 灯具: 100-240V AC 50/60Hz 最大3A 钨丝灯: 最大 690W/230V LED: 最大 300W/230V 风扇: 100-240V AC 50/60Hz 最大2A</p>
RF	433MHz
Wi-Fi	IEEE 802.11 b/g/n 2.4GHz
支持平台	Android & iOS
工作温度	-10°C~40°C
外壳材料	PC V0
产品规格	116x55x26mm

更换设备网络

设备更换新的网络环境使用时, 长按设备或RM433R2遥控器“配对按钮”“5秒直到风扇灯蜂鸣器呈两短一长响声, 松开, 此时设备进入快速配网模式, 即可再次添加。

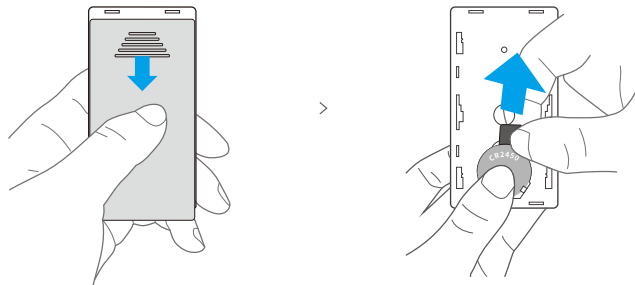


恢复出厂设置

在 eWeLink APP 端 “删除设备”，设备即恢复出厂设置。

RM433R2遥控器

使用产品前,按住遥控器后盖向下滑动来取下后盖,然后用手按住电池同时抽出电池绝缘贴片,即可使用。

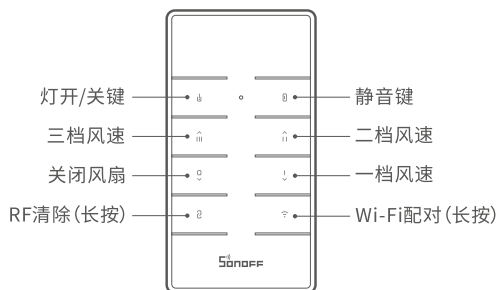


⚠ 设备分带电池和不带电池版本。

产品参数

型号	RM433R2
RF	433MHz
遥控器尺寸	87x45x12mm
遥控器底座尺寸	86x86x15mm(可选)
供电	3V纽扣电池 x 1 (电池型号:CR2450)
外壳材料	PC V0

iFan04支持使用RM433R2遥控器控制开关,学习成功后,即可根据下图按键说明控制设备,此功能属于本地近程无线遥控与Wi-Fi网络无关。



RF清除方法: 长按5秒至风扇灯蜂鸣器“滴滴”两声,即可清码。

Wi-Fi配对方法: 长按5秒直到风扇灯蜂鸣器呈两短一长响声,设备进入快速配网模式 (Touch),可在APP端进行添加设备。

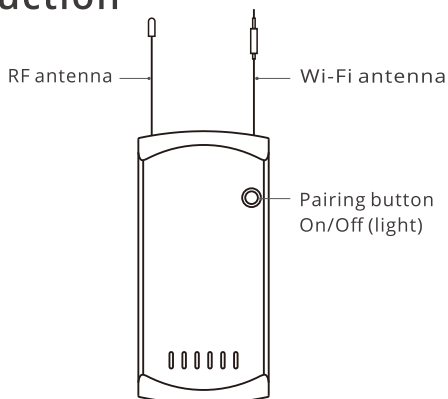
⚠ 配网模式下,短按任意按键可退出当前模式

常见问题

Wi-Fi设备与 eWeLink APP 配对失败。

1. 确保设备处于配对模式。三分钟内没进行配网,设备将自动退出配对模式。
2. 请开启定位服务并允许定位权限。在选择 Wi-Fi 网络之前,请开启定位服务并允许定位权限。位置信息权限用于获取 Wi-Fi 列表信息。如果单击禁用,您将无法添加设备。
3. 确保您的 Wi-Fi 网络为 2.4GHz 频段。
4. 确保您输入了正确的 Wi-Fi SSID 和密码,没有包含特殊字符。密码错误是配对失败的一个非常常见的原因。
5. 配对时设备应靠近路由器,以保证良好的传输信号条件。

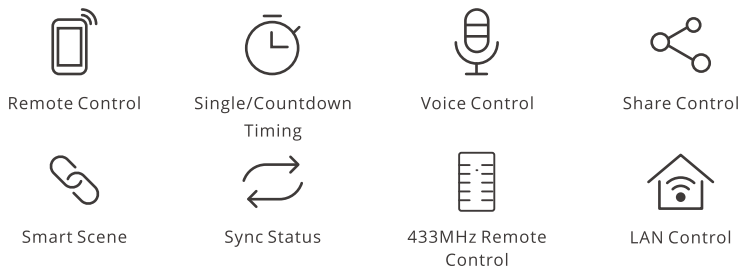
Product Introduction



⚠ The device weight is less than 1 kg. The installation height of less than 2 m is recommended.

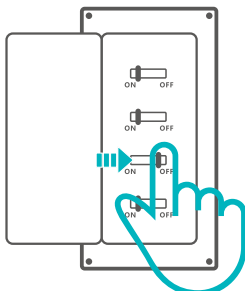
Features

Remotely turn on/off the device, schedule it on/off or share it with your family to control together.



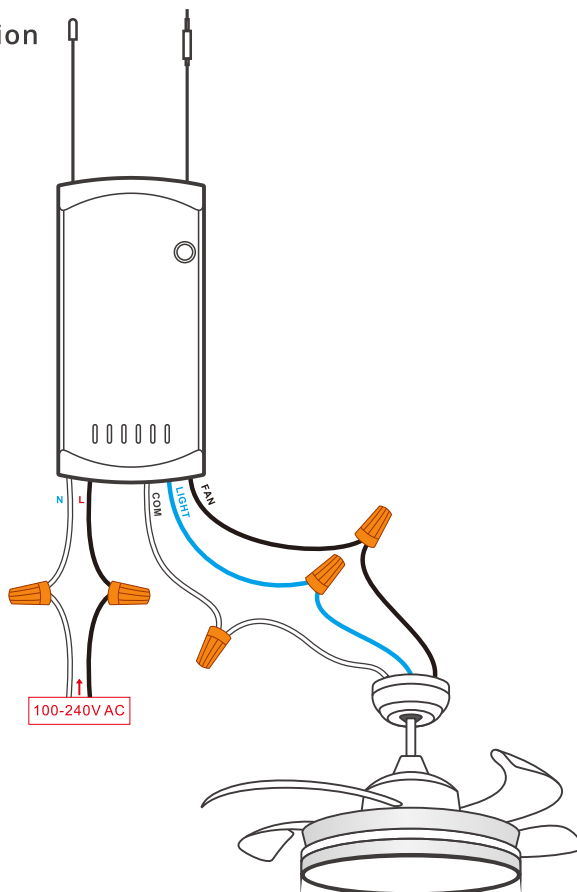
Operating Instruction

1. Power off



⚠ To avoid electric shocks, please consult the dealer or a qualified professional for help when installing and repairing!

2. Wiring instruction



- ⚠ Please install protection devices before connecting the live wire. (e.g. fuses or air switches).
- ⚠ Make sure the neutral wire and live wire connection is correct.

3. Download the eWeLink APP



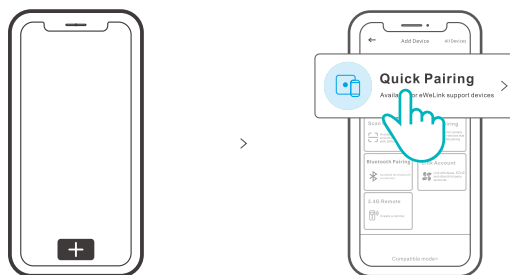
Android™ & iOS

4. Power on

After powering on, the device will enter the quick pairing mode (Touch) during the first use, then the fan makes two short beeps and one long beep.

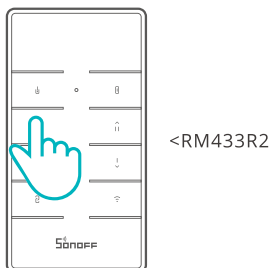
- ⚠ If not paired within 3mins, the device will exit the quick pairing mode (Touch). If you need enter again, long press the “pairing button” on the controller or “Wi-Fi pairing button” on the RM433R2 remote controller and hold 5s until the fan makes two short and one long “bi” sound and release.

5. Add the device



Tap “+” and select “Quick Pairing”, then operate following the prompt on the APP.

Pairing method for the device and SONOFF RM433R2 remote controller:



Please press any button within 5s after powering on again until the ceiling fan makes a sound “di”, and pairing is successful.

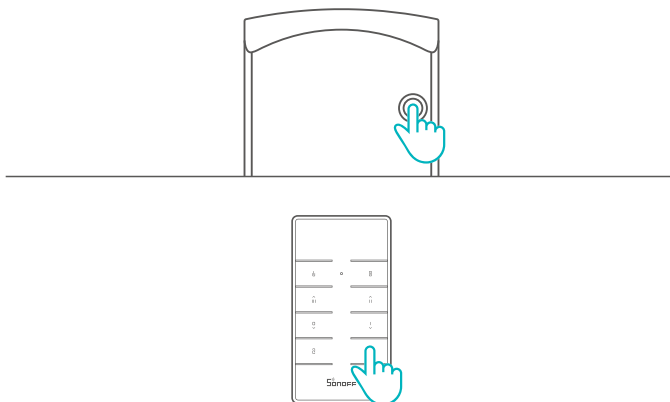
- ⚠ The device can pair with up to 10 remote controllers and the 11th remote controller data will cover the 1th.

Specifications

Model	iFan04-L, iFan04-H
Input	100-240V AC 50/60Hz 5A
Output	<p>iFan04-L: Light: 100-240V AC 50/60Hz 3A Max Tungsten lamp: 360W/120V Max LED: 150W/120V Max Fan: 100-240V AC 50/60Hz 2A Max</p> <p>iFan04-H: Light: 100-240V AC 50/60Hz 3A Max Tungsten lamp: 690W/230V Max LED: 300W/230V Max Fan: 100-240V AC 50/60Hz 2A Max</p>
RF	433MHz
Wi-Fi	IEEE 802.11 b/g/n 2.4GHz
支持平台	Android & iOS
工作温度	-10°C~40°C
外壳材料	PC V0
产品规格	116x55x26mm

Switch Network

If you need to change the network, Long press the “pairing button” on the controller or “Wi-Fi pairing button” on the RM433R2 remote controller and hold 5s until the fan makes two short and one long “bi” sound and release., then the device enters quick pairing mode and you can pair again.

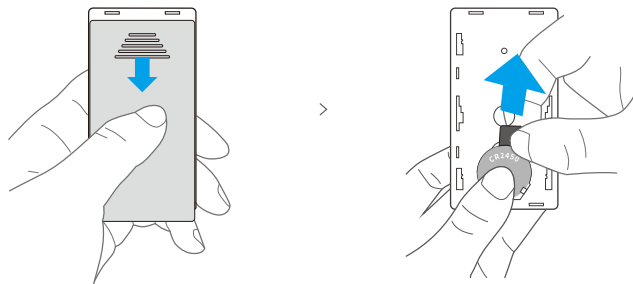


Factory Reset

Deleting the device on the eWeLink APP indicates you restore it to factory setting.

RM433R2 remote controller

Before operating the product, please press and push down the back cover until it removes, then press the battery and pull out the insulation sheet.

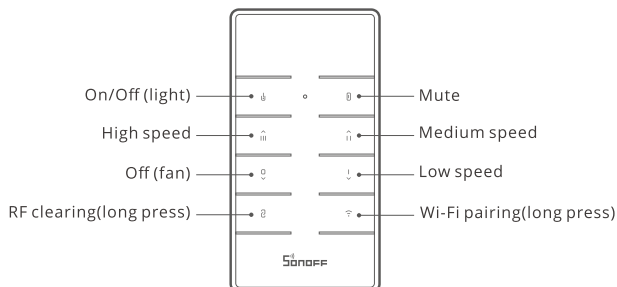


ⓘ The device has the version with battery and without battery.

Specifications

Model	RM433R2
RF	433MHz
Remote controller size	87x45x12mm
Remote controller base size	86x86x15mm (not included)
Power supply	3V button cell x 1 (Battery model: CR2450)
Material	PC V0

The iFan04 supports the remote controller with RM433R2 to turn on/off, after pairing with one button, all buttons can control the connected device, which is local short-range wireless control not Wi-Fi control.



RF clearing method: Long press for 5s until the ceiling fan makes two sounds “di di” to clear the code successfully.

Wi-Fi pairing method: Long press for 5s until the fan makes two short and one long "bi" sound to enter the quick pairing mode (Touch). then you can add the light on eWeLink APP.

ⓘ In quick pairing mode, you can short press any button on the remote controller to exit this mode.

Common Problems

Fail to pair Wi-Fi devices to eWeLink APP

1. Make sure the device is in pairing mode. After three minutes of unsuccessful pairing, the device will automatically exit pairing mode.
2. Please turn on location services and allow location permission. Before choosing the Wi-Fi network, location services should be turned on and location permission should be allowed. Location information permission is used to obtain Wi-Fi list information. If you click Disable, you will not be able to add devices.
3. Make sure your Wi-Fi network runs on the 2.4GHz band.
4. Make sure you entered a correct Wi-Fi SSID and password, no special characters contained. Wrong password is a very common reason for pairing failure.
5. The device shall get close to the router for a good transmission signal condition while pairing.

FCC Warning

Changes or modifications not expressly approved by the party responsible for compliance could avoid the user's authority to operate the equipment.

This device complies with part 15 of the FCC Rules. Operation is subject to the following two conditions: (1) This device may not cause harmful interference, and (2) this device must accept any interference received, including interference that may cause undesired operation.

FCC Radiation Exposure Statement:

This equipment complies with FCC radiation exposure limits set forth for an uncontrolled environment. This equipment should be installed and operated with minimum distance 20cm between the radiator & your body. This transmitter must not be co-located or operating in conjunction with any other antenna or transmitter.

Note:

This equipment has been tested and found to comply with the limits for a Class B digital device, pursuant to part 15 of the FCC Rules. These limits are designed to provide reasonable protection against harmful interference in a residential installation. This equipment generates, uses and can radiate radio frequency energy and, if not installed and used in accordance with the instructions, may cause harmful interference to radio communications. However, there is no guarantee that interference will not occur in a particular installation. If this equipment does cause harmful interference to radio or television reception, which can be determined by turning the equipment off and on, the user is encouraged to try to correct the interference by one or more of the following measures:

- Reorient or relocate the receiving antenna.
- Increase the separation between the equipment and receiver.
- Connect the equipment into an outlet on a circuit different from that to which the receiver is connected.
- Consult the dealer or an experienced radio/TV technician for help.

Hereby, Shenzhen Sonoff Technologies Co., Ltd. declares that the radio equipment type iFan04-L, iFan04-H is in compliance with Directive 2014/53/EU. The full text of the EU declaration of conformity is available at the following internet address:

<https://sonoff.tech/usermanuals>



Shenzhen Sonoff Technologies Co., Ltd.

1001, BLDG8, Lianhua Industrial Park, shenzhen, GD, China
ZIP code: 518000 Website: sonoff.tech

MADE IN CHINA

