

# Antenna Specification

Product description: 2.4G PCB Antenna

Uni Link's part number: ANTENNA-2400

Issue Date: 2024-09-10

Note: 2400-2500MHz

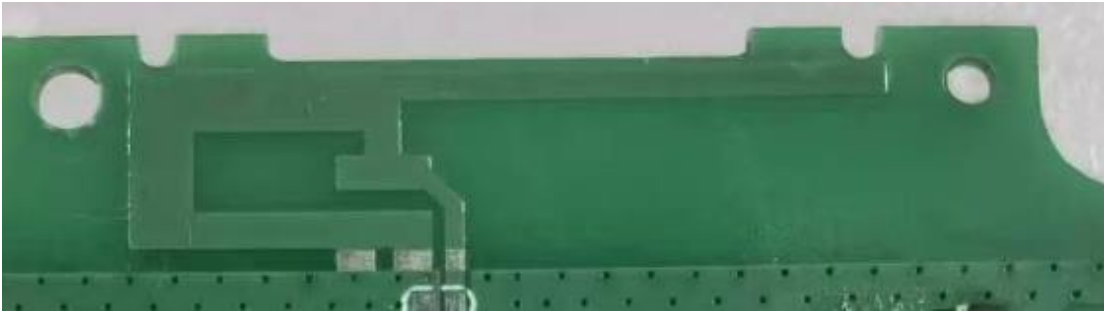
Manufacturer: Shenzhen Sonoff Technologies Co.,Ltd.

Address: 3F & 6F, Bldg A, No. 663, Bulong Rd, Shenzhen, Guangdong, China

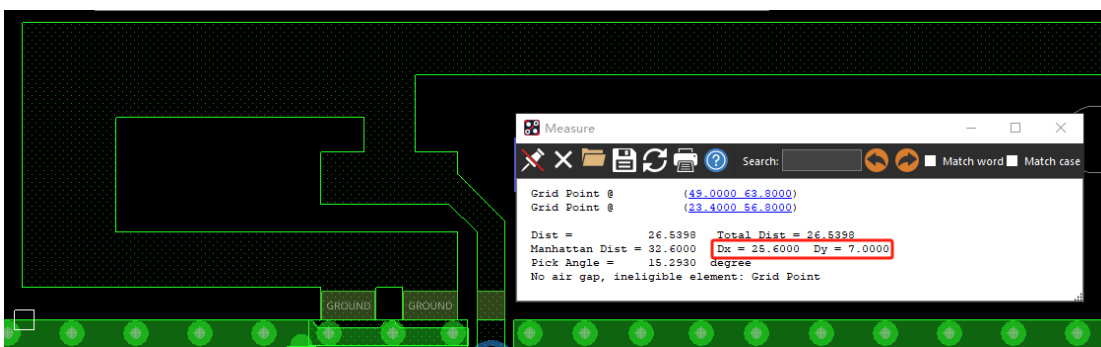
## 1、 (PRODUCT TECHNICAL SPECIFICATION)

Electrical Specifications	
Frequency Range (MHz)	2400-2500
Input Impedence ( $\Omega$ )	50
V.S.W.R	$\leq 1.5$
Gain (dBi)	1.66
Polarization Type	Horizontal
Power Capacity (w)	2
Mechanical Specifications	
Radiator	Cuprum
Connect Type	PCB
Working Temp( $^{\circ}\text{C}$ )	-10~40
Storage Temperature( $^{\circ}\text{C}$ )	-20~55
antenna size	25.6mm x 7mm x 0.1mm

## 2、PRODUCT PICTURE



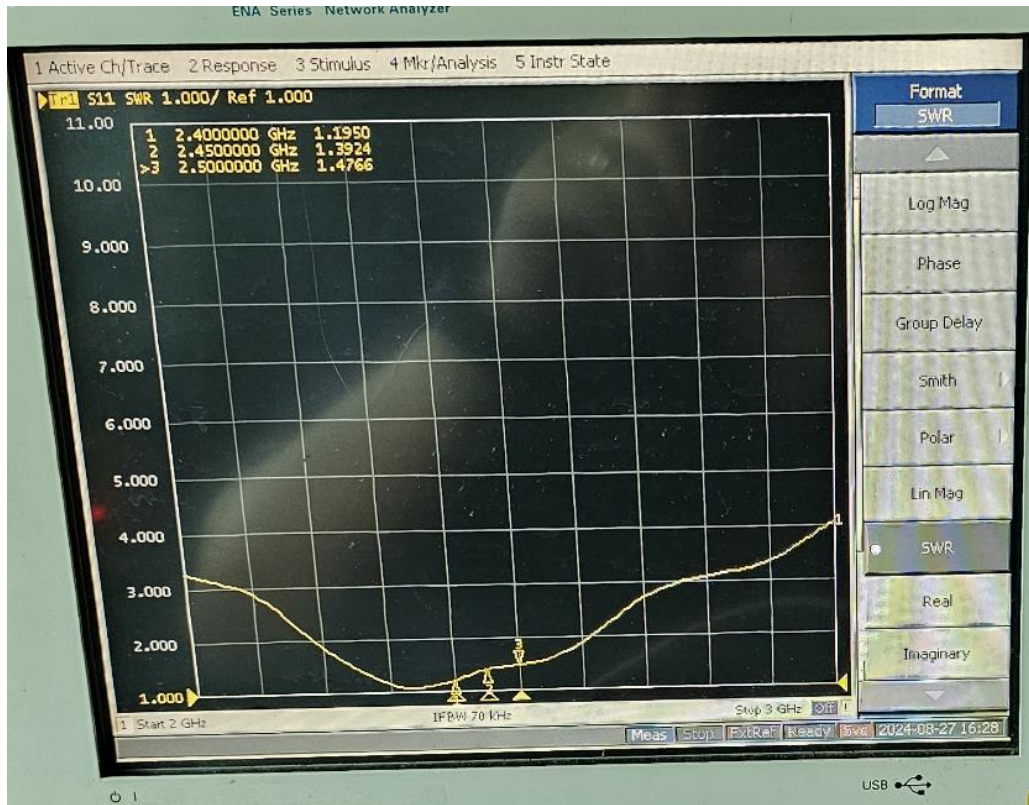
## 3、PRODUCT SPECIFICATION CHART



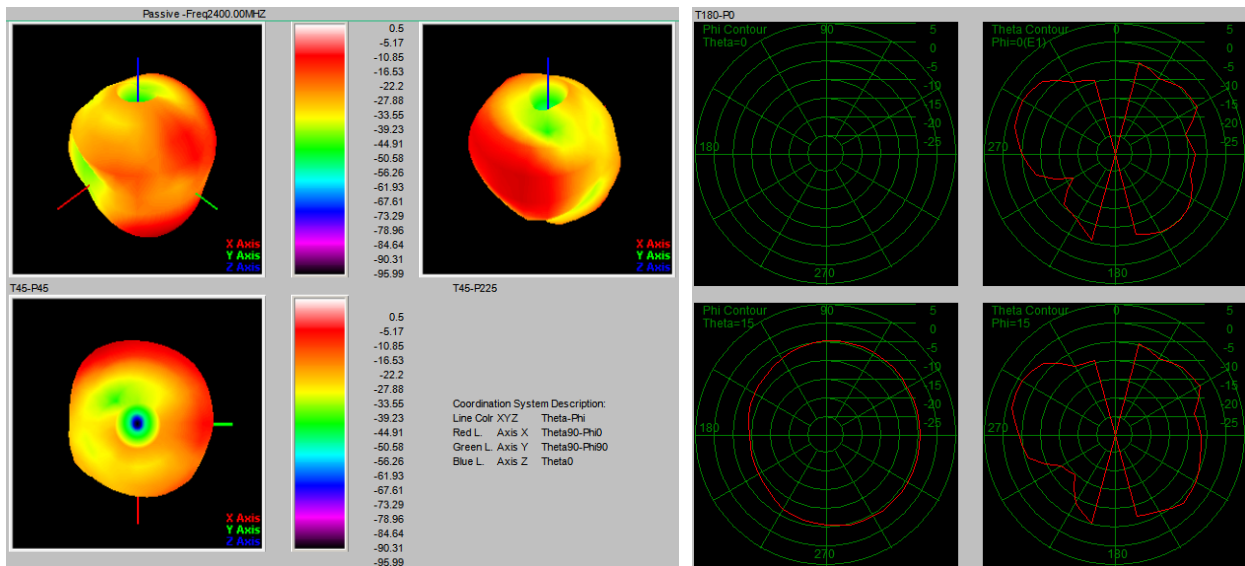
## 4、Antenna Gain

Test Point ID	Freq. (MHz)	TRP (dBm)	Gain (dBi)	Directivity (dBi)	Efficiency (%)	Efficiency (dB)	Max (dBm)	Theta of Max	Phi of Max	Min (dBm)	Theta of Min	Phi of Min	AVG (dBm)	Max/Min (dB)	Max/AVG (dB)	Min/AVG (dB)
1	2400.0	2400.00	0.50	5.20	33.9%	-4.70	0.50	13500	9000	-95.99	0	0	-4.91	96.49	5.41	-91.08
2	2410.0	2410.00	0.62	5.46	32.8%	-4.84	0.62	12000	6000	-95.99	0	0	-4.83	96.61	5.45	-91.16
3	2420.0	2420.00	0.98	5.86	32.5%	-4.88	0.98	12000	6000	-95.99	0	0	-4.62	96.97	5.60	-91.37
4	2430.0	2430.00	1.66	6.19	35.2%	-4.53	1.66	12000	6000	-95.99	0	0	-4.12	97.65	5.78	-91.87
5	2440.0	2440.00	1.56	6.25	33.9%	-4.69	1.56	12000	6000	-95.99	0	0	-4.34	97.55	5.90	-91.65
6	2450.0	2450.00	1.39	6.19	33.1%	-4.80	1.39	12000	6000	-95.99	0	0	-4.44	97.38	5.83	-91.55
7	2460.0	2460.00	1.45	6.10	34.2%	-4.65	1.45	12000	6000	-95.99	0	0	-4.31	97.44	5.76	-91.68
8	2470.0	2470.00	1.34	5.81	35.8%	-4.46	1.34	12000	6000	-95.99	0	0	-4.33	97.33	5.67	-91.66
9	2480.0	2480.00	1.20	5.39	38.1%	-4.20	1.20	12000	6000	-95.99	0	0	-4.44	97.19	5.64	-91.55
10	2490.0	2490.00	1.21	5.38	38.3%	-4.17	1.21	12000	6000	-95.99	0	0	-4.51	97.20	5.71	-91.48
11	2500.0	2500.00	1.24	5.30	39.3%	-4.06	1.24	12000	6000	-95.99	0	0	-4.46	97.23	5.70	-91.53

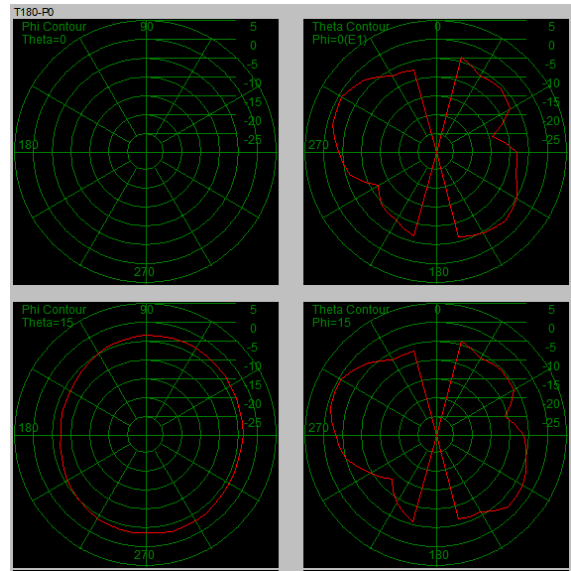
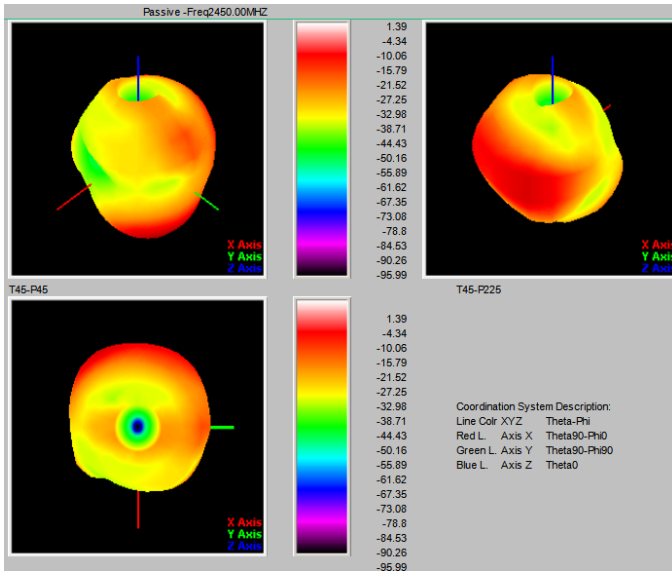
## 5、Image of antenna field shape test



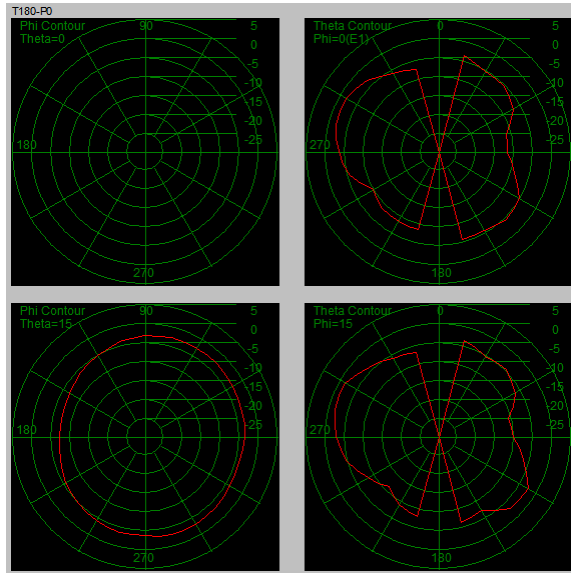
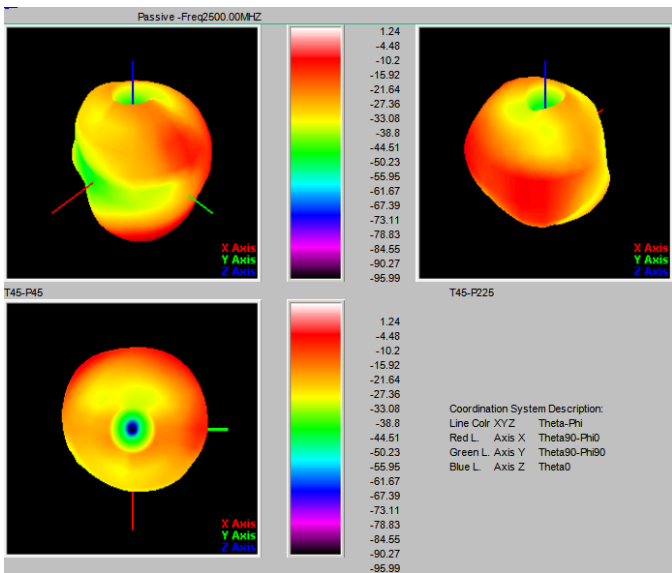
## 6、2D and 3D



2400MHz



2450MHz



2500MHz